

**Valves Product**  
**CTS Valves and Stops & Ball Valve Accessories**



**CTS Valves and Stops**

Part Number	Size	Std Pk	Mstr Ctn	Prod Code	MSRP
-------------	------	--------	----------	-----------	------

**Quarter Turn Straight Supply Stop**

**Socket x Comp Thread**

100 psi @ 180°F (82°C)  
 Male Thread for Connection to Flexible Supply Line having Female 3/8" or 1/2" Compression Thread Inlet - NSF® Certified Lead Free

7422CM-073	1/2X3/8	72	0	217	11.86
7422CM-005	1/2	72	0	217	11.86



**Quarter Turn Straight Supply Stop**

**Socket x NPT**

100 psi @ 180°F (82°C)  
 Male Thread for Connection to Flexible Supply Line having Female 1/2" NPT Thread Inlet - NSF® Certified Lead Free

7422-005	1/2	72	0	217	11.86
----------	-----	----	---	-----	-------



**Quarter Turn Straight Valve**

**Socket x Mipt**

NSF® Certified Lead Free

CSV-0500-12T	1/2X1/2	72	0	17R	9.23
--------------	---------	----	---	-----	------



**Stop Valve - Red Handle**

**Socket x Socket**

NSF® Certified Lead Free

8422-005	1/2	36	0	217	14.16
8422-007	3/4	36	0	217	14.16



**Stop Valve - Clear Handle**

**Socket x Socket**

NSF® Certified Lead Free

8422CH-005	1/2	36	0	217	14.16
8422CH-007	3/4	36	0	217	14.16



**Stop & Waste Valve**

**Socket x Socket**

NSF® Certified Lead Free

8422W-005	1/2	36	0	217	14.85
8422W-007	3/4	36	0	217	14.85



Part Number	Size	Std Pk	Mstr Ctn	Prod Code	MSRP
-------------	------	--------	----------	-----------	------

**Boiler Drain Valve**

**Socket x MHT**

NSF® Certified Lead Free

82MH-005	1/2	36	0	217	14.85
82MH-007	3/4	36	0	217	14.85



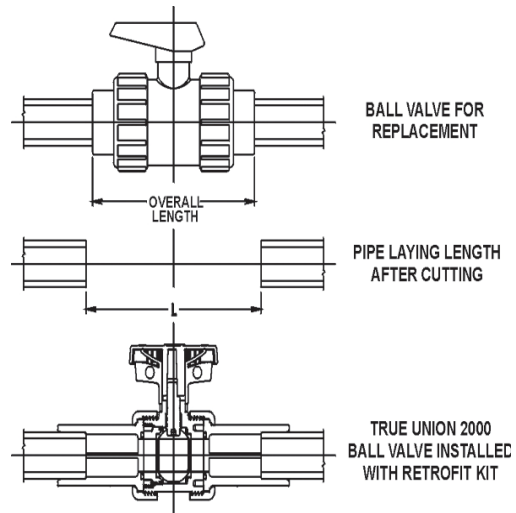
**Ball Valve Accessories**

**Retrofit End Connector Sets (Socket Style Only)**

Special extended Socket end connectors allow in-line replacement of other brand valves with Spears® True Union 2000 Ball Valves, 3-Way Ball Valves, and True Union 2000 Ball Check Valves.

Kit includes 2 Extended End Connectors with O-rings

**Retrofit Kit For Other Brand Valves**



Size	1/2	3/4	1	1-1/4	1-1/2	2	2-1/2	3	4
L	4-29/32	5-7/16	6-3/32	7-1/4	7-1/2	8-17/32	10-3/4	11-7/16	14-15/16

**True Union Retrofit Kits - Other Brand Valves (Socket Style Only) PVC**

Size	EPDM	FKM	Std Pk	Mstr Pk	Prod Code
1/2	RFK2-005 11.84	RFK3-005 15.43	1	25	299



Valves Product  
**Ball Valve Accessories**

**Ball Valve Accessories**

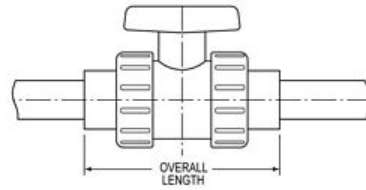
**True Union Retrofit Kits - Other Brand Valves (Socket Style Only) PVC (continued)**

Size	EPDM	FKM	Std Pk	Mstr Pk	Prod Code
3/4	RFK2-007 <b>15.42</b>	RFK3-007 <b>17.63</b>	1	25	299
1	RFK2-010 <b>17.46</b>	RFK3-010 <b>20.39</b>	1	25	299
1-1/4	RFK2-012 <b>20.52</b>	RFK3-012 <b>29.13</b>	1	10	299
1-1/2	RFK2-015 <b>25.73</b>	RFK3-015 <b>33.60</b>	1	10	299
2	RFK2-020 <b>37.06</b>	RFK3-020 <b>46.33</b>	1	10	299
2-1/2	RFK2-025 <b>68.20</b>	RFK3-025 <b>92.82</b>	1	5	299
3	RFK2-030 <b>90.72</b>	RFK3-030 <b>113.38</b>	1	5	299
4	RFK2-040 <b>133.88</b>	RFK3-040 <b>191.60</b>	1	4	299

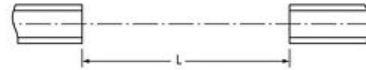
**True Union Retrofit Kits - Other Brand Valves (Socket Style Only) CPVC**

Size	EPDM	FKM	Std Pk	Mstr Pk	Prod Code
1/2	RFK2-005C <b>17.21</b>	RFK3-005C <b>18.64</b>	1	25	299
3/4	RFK2-007C <b>19.36</b>	RFK3-007C <b>23.51</b>	1	25	299
1	RFK2-010C <b>22.13</b>	RFK3-010C <b>26.98</b>	1	25	299
1-1/4	RFK2-012C <b>28.82</b>	RFK3-012C <b>37.43</b>	1	10	299
1-1/2	RFK2-015C <b>35.18</b>	RFK3-015C <b>44.99</b>	1	10	299
2	RFK2-020C <b>47.77</b>	RFK3-020C <b>57.02</b>	1	10	299
2-1/2	RFK2-025C <b>100.87</b>	RFK3-025C <b>120.47</b>	1	5	299
3	RFK2-030C <b>135.20</b>	RFK3-030C <b>163.85</b>	1	5	299
4	RFK2-040C <b>193.32</b>	RFK3-040C <b>255.39</b>	1	4	299

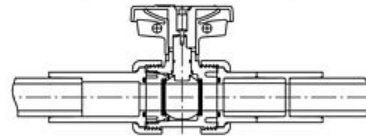
**Retrofit Kit For Older "Regular Style" Spears® Valves**



BALL VALVE FOR REPLACEMENT



PIPE LAYING LENGTH AFTER CUTTING



TRUE UNION BALL VALVE INSTALLED WITH RETROFIT KIT

Size	1/2	3/4	1	1-1/4	1-1/2	2	2-1/2	3	4
L	5-5/16	6-1/4	6-11/16	7-1/8	8-3/16	8-15/16	12	12-1/16	13-3/16

**True Union Retrofit Kits - Older "Regular Style" Spears® Valves (Socket Style Only) PVC**

Size	EPDM	FKM	Std Pk	Mstr Pk	Prod Code
1/2	RFKS2-005 <b>11.84</b>	RFKS3-005 <b>15.43</b>	1	10	299
3/4	RFKS2-007 <b>15.42</b>	RFKS3-007 <b>17.63</b>	1	10	299
1	RFKS2-010 <b>17.46</b>	RFKS3-010 <b>20.39</b>	1	10	299
1-1/4	RFKS2-012 <b>20.52</b>	RFKS3-012 <b>29.13</b>	1	10	299
1-1/2	RFKS2-015 <b>25.73</b>	RFKS3-015 <b>33.60</b>	1	10	299
2	RFKS2-020 <b>37.06</b>	RFKS3-020 <b>46.33</b>	1	5	299
2-1/2	RFKS2-025 <b>68.20</b>	RFKS3-025 <b>92.82</b>	1	5	299
3	RFKS2-030 <b>90.72</b>	RFKS3-030 <b>113.38</b>	1	5	299
4	RFKS2-040 <b>133.88</b>	RFKS3-040 <b>191.60</b>	1	2	299

**True Union Retrofit Kits - Older "Regular Style" Spears® Valves (Socket Style Only) CPVC**

Size	EPDM	FKM	Std Pk	Mstr Pk	Prod Code
1/2	RFKS2-005C <b>17.21</b>	RFKS3-005C <b>18.64</b>	1	10	299
3/4	RFKS2-007C <b>19.36</b>	RFKS3-007C <b>23.51</b>	1	10	299
1	RFKS2-010C <b>22.13</b>	RFKS3-010C <b>26.98</b>	1	10	299
1-1/4	RFKS2-012C <b>28.82</b>	RFKS3-012C <b>37.43</b>	1	10	299
1-1/2	RFKS2-015C <b>35.18</b>	RFKS3-015C <b>44.99</b>	1	10	299

Valves Product  
**Ball Valve Accessories**



**Ball Valve Accessories**

**True Union Retrofit Kits - Older "Regular Style" Spears® Valves  
(Socket Style Only) CPVC (continued)**

Size	EPDM	FKM	Std Pk	Mstr Pk	Prod Code
2	RFKS2-020C <b>47.77</b>	RFKS3-020C <b>57.02</b>	1	5	299
2-1/2	RFKS2-025C <b>100.87</b>	RFKS3-025C <b>120.47</b>	1	5	299
3	RFKS2-030C <b>135.20</b>	RFKS3-030C <b>163.85</b>	1	5	299
4	RFKS2-040C <b>193.32</b>	RFKS3-040C <b>255.39</b>	1	2	299

**Supplemental End Connector Sets**



Set of 2 End Connectors with O-rings for all True Union 2000 Ball Valves, Sch 80 Union 2000 fittings and True Union Style Diaphragm Valves.

**PVC - Supplemental End Connector Sets**

Size	EPDM	FKM	Std Pk	Mstr Pk	Prod Code
<b>SR Threaded Ends</b>					
1/2	ECSRT2-005 <b>9.57</b>	ECSRT3-005 <b>12.06</b>	1	25	299
3/4	ECSRT2-007 <b>13.84</b>	ECSRT3-007 <b>15.39</b>	1	25	299
1	ECSRT2-010 <b>15.42</b>	ECSRT3-010 <b>17.27</b>	1	25	299
1-1/4	ECSRT2-012 <b>20.43</b>	ECSRT3-012 <b>26.41</b>	1	10	299
1-1/2	ECSRT2-015 <b>27.80</b>	ECSRT3-015 <b>33.31</b>	1	10	299
2	ECSRT2-020 <b>36.56</b>	ECSRT3-020 <b>43.02</b>	1	10	299
2-1/2	ECSRT2-025 <b>74.86</b>	ECSRT3-025 <b>92.08</b>	1	5	299
3	ECSRT2-030 <b>90.58</b>	ECSRT3-030 <b>106.45</b>	1	5	299
4	ECSRT2-040 <b>125.36</b>	ECSRT3-040 <b>165.78</b>	1	4	299
6	ECSRT2-060 <b>270.80</b>	ECSRT3-060 <b>358.07</b>	1	4	299

**Socket Ends**

1/2	ECS2-005 <b>8.33</b>	ECS3-005 <b>10.82</b>	1	25	299
3/4	ECS2-007 <b>10.80</b>	ECS3-007 <b>12.36</b>	1	25	299

**PVC - Supplemental End Connector Sets (continued)**

Size	EPDM	FKM	Std Pk	Mstr Pk	Prod Code
<b>Socket Ends</b>					
1	ECS2-010 <b>12.21</b>	ECS3-010 <b>14.27</b>	1	25	299
1-1/4	ECS2-012 <b>14.37</b>	ECS3-012 <b>20.42</b>	1	10	299
1-1/2	ECS2-015 <b>18.02</b>	ECS3-015 <b>23.52</b>	1	10	299
2	ECS2-020 <b>25.95</b>	ECS3-020 <b>32.42</b>	1	10	299
2-1/2	ECS2-025 <b>47.75</b>	ECS3-025 <b>64.96</b>	1	5	299
3	ECS2-030 <b>63.51</b>	ECS3-030 <b>79.36</b>	1	5	299
4	ECS2-040 <b>93.74</b>	ECS3-040 <b>134.11</b>	1	4	299
6	ECS2-060 <b>202.46</b>	ECS3-060 <b>289.72</b>	1	0	299

**Spigot Ends**

1/2	ECSP2-005 <b>8.33</b>	ECSP3-005 <b>10.82</b>	1	25	299
3/4	ECSP2-007 <b>10.80</b>	ECSP3-007 <b>12.36</b>	1	25	299
1	ECSP2-010 <b>12.21</b>	ECSP3-010 <b>14.27</b>	1	25	299
1-1/4	ECSP2-012 <b>14.37</b>	ECSP3-012 <b>20.42</b>	1	10	299
1-1/2	ECSP2-015 <b>18.02</b>	ECSP3-015 <b>23.52</b>	1	10	299
2	ECSP2-020 <b>25.95</b>	ECSP3-020 <b>32.42</b>	1	10	299
2-1/2	ECSP2-025 <b>47.75</b>	ECSP3-025 <b>64.96</b>	1	5	299
3	ECSP2-030 <b>63.51</b>	ECSP3-030 <b>79.36</b>	1	5	299
4	ECSP2-040 <b>93.74</b>	ECSP3-040 <b>134.11</b>	1	4	299

**CPVC - Supplemental End Connector Sets**

Size	EPDM	FKM	Std Pk	Mstr Pk	Prod Code
<b>SR Threaded Ends</b>					
1/2	ECSRT2-005C <b>13.31</b>	ECSRT3-005C <b>14.31</b>	1	25	299
3/4	ECSRT2-007C <b>16.58</b>	ECSRT3-007C <b>19.45</b>	1	25	299
1	ECSRT2-010C <b>18.49</b>	ECSRT3-010C <b>21.92</b>	1	25	299
1-1/4	ECSRT2-012C <b>27.12</b>	ECSRT3-012C <b>36.00</b>	1	10	299
1-1/2	ECSRT2-015C <b>34.39</b>	ECSRT3-015C <b>41.27</b>	1	10	299
2	ECSRT2-020C <b>44.04</b>	ECSRT3-020C <b>50.54</b>	1	10	299
2-1/2	ECSRT2-025C <b>97.67</b>	ECSRT3-025C <b>111.45</b>	1	5	299
3	ECSRT2-030C <b>121.73</b>	ECSRT3-030C <b>141.83</b>	1	5	299
4	ECSRT2-040C <b>166.97</b>	ECSRT3-040C <b>210.45</b>	1	4	299



**Valves Product**  
**Ball Valve Accessories**

**Ball Valve Accessories**

**CPVC - Supplemental End Connector Sets (continued)**

Size	EPDM	FKM	Std Pk	Mstr Pk	Prod Code
------	------	-----	--------	---------	-----------

**SR Threaded Ends**

<b>6</b>	ECSRT2-060C <b>360.67</b>	ECSRT3-060C <b>454.52</b>	1	4	299
----------	------------------------------	------------------------------	---	---	-----

**Socket Ends**

<b>1/2</b>	ECS2-005C <b>12.04</b>	ECS3-005C <b>13.05</b>	1	25	299
<b>3/4</b>	ECS2-007C <b>13.55</b>	ECS3-007C <b>16.43</b>	1	25	299
<b>1</b>	ECS2-010C <b>15.46</b>	ECS3-010C <b>18.87</b>	1	25	299
<b>1-1/4</b>	ECS2-012C <b>21.06</b>	ECS3-012C <b>26.20</b>	1	10	299
<b>1-1/2</b>	ECS2-015C <b>24.60</b>	ECS3-015C <b>31.49</b>	1	10	299
<b>2</b>	ECS2-020C <b>33.44</b>	ECS3-020C <b>39.92</b>	1	10	299
<b>2-1/2</b>	ECS2-025C <b>70.62</b>	ECS3-025C <b>84.35</b>	1	5	299
<b>3</b>	ECS2-030C <b>94.62</b>	ECS3-030C <b>114.74</b>	1	5	299
<b>4</b>	ECS2-040C <b>135.34</b>	ECS3-040C <b>178.78</b>	1	4	299
<b>6</b>	ECS2-060C <b>292.34</b>	ECS3-060C <b>386.17</b>	1	0	299

**Spigot Ends**

<b>1/2</b>	ECSP2-005C <b>12.04</b>	ECSP3-005C <b>13.05</b>	1	25	299
<b>3/4</b>	ECSP2-007C <b>13.55</b>	ECSP3-007C <b>16.43</b>	1	25	299
<b>1</b>	ECSP2-010C <b>15.46</b>	ECSP3-010C <b>18.87</b>	1	25	299
<b>1-1/4</b>	ECSP2-012C <b>21.06</b>	ECSP3-012C <b>26.20</b>	1	10	299
<b>1-1/2</b>	ECSP2-015C <b>24.60</b>	ECSP3-015C <b>31.49</b>	1	10	299
<b>2</b>	ECSP2-020C <b>33.44</b>	ECSP3-020C <b>39.92</b>	1	10	299
<b>2-1/2</b>	ECSP2-025C <b>70.62</b>	ECSP3-025C <b>84.35</b>	1	5	299
<b>3</b>	ECSP2-030C <b>94.62</b>	ECSP3-030C <b>114.74</b>	1	5	299
<b>4</b>	ECSP2-040C <b>135.34</b>	ECSP3-040C <b>178.78</b>	1	4	299

**Split Nut Repair Kits**



Designed to replace broken union nuts on all True Union 2000 Ball Valves and Sch 80 Union 2000 fittings

Split Nut Repair Kit

Kit includes:  
2-Split Nut Halves  
1-SS316 Gear Clamp  
Full valve pressure rating maintained

**Split Nut Repair Kits**

Size	PVC	CPVC	Std Pk	Mstr Pk	Prod Code
<b>1/2</b>	SNK-005 <b>9.82</b>	SNK-005C <b>15.12</b>	25	200	299
<b>3/4</b>	SNK-007 <b>12.15</b>	SNK-007C <b>19.07</b>	1	25	299
<b>1</b>	SNK-010 <b>15.20</b>	SNK-010C <b>23.34</b>	1	25	299
<b>1-1/4</b>	SNK-012 <b>19.02</b>	SNK-012C <b>31.13</b>	1	25	299
<b>1-1/2</b>	SNK-015 <b>25.42</b>	SNK-015C <b>44.64</b>	1	25	299
<b>2</b>	SNK-020 <b>38.72</b>	SNK-020C <b>66.98</b>	1	25	299
<b>3</b>	SNK-030 <b>105.04</b>	SNK-030C <b>241.85</b>	1	6	299
<b>4</b>	SNK-040 <b>175.09</b>	SNK-040C <b>338.69</b>	1	6	299

**True Union 2000 Valve Seal Carrier Tools**



**True Union 2000 Valve Seal Carrier Tools**

Part Number	Size	Std Pk	Mstr Ctn	Prod Code	MSRP
-------------	------	--------	----------	-----------	------

**True Union 2000 Check Valve Seal Carrier Tool**

TSK-00503	<b>1/2</b>	1000	0	299	.97
TSK-00703	<b>3/4</b>	1800	0	299	.97
TSK-01003	<b>1</b>	1800	0	299	.97
TSK-01203	<b>1-1/4</b>	1500	0	299	1.95
TSK-01503	<b>1-1/2</b>	800	0	299	1.95
TSK-02003	<b>2</b>	550	0	299	1.95
TSK-03003	<b>3</b>	200	0	299	5.84
TSK-04003	<b>4</b>	150	0	299	5.84
TSK-06003	<b>6</b>	40	0	299	12.09

**True Union 2000 Ball Valve Seal Carrier Tool**

TSK1-00503	<b>1/2</b>	2200	0	299	.97
TSK1-00703	<b>3/4</b>	1700	0	299	.97
TSK1-01003	<b>1</b>	1600	0	299	.97

Valves Product  
**Ball Valve Accessories**



**Ball Valve Accessories**

**True Union 2000 Valve Seal Carrier Tools (continued)**

Part Number	Size	Std Pk	Mstr Ctn	Prod Code	MSRP
<b>True Union 2000 Ball Valve Seal Carrier Tool</b>					
TSK1-01203	1-1/4	1200	0	299	1.95
TSK1-01503	1-1/2	700	0	299	1.95
TSK1-02003	2	550	0	299	1.95
TSK-03003	3	200	0	299	5.84
TSK-04003	4	150	0	299	5.84
TSK-06003	6	40	0	299	12.09

**Seal Carrier Adjustment Tool for Regular True Union Valves (not shown)**

Part Number	Size	Std Pk	Mstr Ctn	Prod Code	MSRP
VT-025-040	2-1/2 - 4	20	0	299	51.41

Designed for use on Spears® 2-1/2", 3", & 4" Regular True Union Ball Valves for quick, easy adjustment of valve seal carriers using a standard 1", 6-point socket.

**Stem Extension Kits**



Desired Handle Height for Factory Assembled One-Piece Units

Desired Handle Height	Code	Desired Handle Height	Code	Desired Handle Height	Code	Desired Handle Height	Code
5"	050	16"	160	27"	270	38"	380
6"	060	17"	170	28"	280	39"	390
7"	070	18"	180	29"	290	40"	400
8"	080	19"	190	30"	300	41"	410
9"	090	20"	200	31"	310	42"	420
10"	100	21"	210	32"	320	43"	430
11"	110	22"	220	33"	330	44"	440
12"	120	23"	230	34"	340	45"	450
13"	130	24"	240	35"	350	46"	460
14"	140	25"	250	36"	360	47"	470
15"	150	26"	260	37"	370	48"	480

If desired handle height is in increments of less than a full inch, substitute the last "0" of the three-digit code with a "2" for 1/4", a "5" for 1/2", or a "7" for 3/4". EXAMPLE: If ordering a Stem Extension Kit for a 1/2" valve with a desired handle height of 14-3/4", the part number would read: BVSE-005-147.

\*Desired length of PVC Schedule 80 Pipe purchased separately and assembled by others.  
\*\*Factory assembled with solvent cemented PVC Schedule 80 pipe. To order, fill in the last three digits of the part number with the three-digit code representing the desired handle height from the chart above. FACTORY SOLVENT CEMENTED STEM EXTENSION KITS, ONCE PRODUCED ARE NON-CANCELLABLE AND NON-RETURNABLE.

<b>IMPORTANT NOTE</b>										
The following minimum handle heights apply to use of all Stem Extension Kits.										
Valve Size (in.)	1/2	3/4	1	1-1/4	1-1/2	2	2-1/2	3	4	6
True Union 2000 Industrial Ball Valves										
Minimum Height (in.)	4-9/16	5-3/16	5-1/2	6-3/4	7-3/8	8	9-13/16	9-13/16	11-5/8	12-3/4
True Union 2000 Standard, Compact 2000 & Single Entry Ball Valves										
Minimum Height (in.)	3-5/8	4-1/4	4-3/4	6	6-3/8	7-7/16	9-1/2	9-1/2	11	N/A
Regular True Union & Compact Ball Valves										
Minimum Height (in.)	4-1/2	5-1/4	5-1/2	7	7-1/2	8	9	9	10-1/2	N/A

**Stem Extension Kits (Two Piece w/Non-Locking Handle)**

Part Number	Size	Std PK	Mstr Ctn	Prod Code	MSRP
<b>Fits Spears® Regular True Union and Compact Ball Valves, 1/2"-2" = 3-Slot Stem, 2-1/2"- 4" = Double Flats Stem</b>					
BVSE-005-000*	1/2	1	25	299	12.60
BVSE-007-000*	3/4	1	25	299	13.97
BVSE-010-000*	1	1	25	299	13.97
BVSE-012-000*	1-1/4	1	25	299	22.64
BVSE-015-000*	1-1/2	1	25	299	25.72
BVSE-020-000*	2	1	25	299	27.96





Valves Product  
**Ball Valve Accessories**

**Ball Valve Accessories**

**Stem Extension Kits (Two Piece w/Non-Locking Handle)**

(continued)

Part Number	Size	Std Pk	Mstr Ctn	Prod Code	MSRP
BVSE-030-000*	<b>2-1/2, 3</b>	1	25	299	28.52
BVSE-040-000*	<b>4</b>	1	25	299	39.17

**Fits Spears® Regular True Union and Compact Ball Valves, 1/2"-2" = 3-Slot Stem, 2-1/2"- 4" = Double Flats Stem**

**Optional Factory Assembled (One-Piece)**

Part Number	Prod Code	5"-12" Handle Height	13"-18" Handle Height	19"-24" Handle Height	25"-36" Handle Height	37"-48" Handle Height
BVSE-005-__**	299					
BVSE-007-__**	299					
BVSE-010-__**	299					
BVSE-012-__**	299					
BVSE-015-__**	299					
BVSE-020-__**	299					
BVSE-030-__**	299					
BVSE-040-__**	299					

**Stem Extension Kits (Two Piece w/Non-Locking Handle)**

Part Number	Size	Std Pk	Mstr Ctn	Prod Code	MSRP
BVSE2-005-000*	<b>1/2</b>	1	25	299	12.60
BVSE2-007-000*	<b>3/4</b>	1	25	299	13.97
BVSE2-010-000*	<b>1</b>	1	25	299	13.97
BVSE2-012-000*	<b>1-1/4</b>	1	25	299	22.64
BVSE2-015-000*	<b>1-1/2</b>	1	25	299	25.72
BVSE2-020-000*	<b>2</b>	1	25	299	27.96
BVSE2-030-000*	<b>2-1/2, 3</b>	1	25	299	28.52
BVSE2-040-000*	<b>4</b>	1	25	299	39.17
BVSE2-060-000*	<b>6</b>	1	25	299	72.45

**Optional Factory Assembled (One-Piece)**

Part Number	Prod Code	5"-12" Handle Height	13"-18" Handle Height	19"-24" Handle Height	25"-36" Handle Height	37"-48" Handle Height
BVSE2-005-__**	299					
BVSE2-007-__**	299					
BVSE2-010-__**	299					
BVSE2-012-__**	299					
BVSE2-015-__**	299					
BVSE2-020-__**	299					
BVSE2-030-__**	299					
BVSE2-040-__**	299					
BVSE2-060-__**	299					

**Round Safety Handle Kits**



Regular fits Spears® Regular True Union and Compact Ball Valves in sizes 1/2" - 2" with 3-Slot Stem and in sizes 2-1/2" - 4" with 1-Slot Stem.

Industrial fits All True Union 2000, Compact 2000, and Single Entry Ball Valves in sizes 1/2" - 2" with 3-Slot Stem and in sizes 2-1/2" - 4" with 1-Slot Stem. The 6" size has a Double-Flat Stem pattern.

**Round Safety Handle Kits**

Size	Regular	Industrial	Std Pk	Mstr Pk	Prod Code
<b>1/2</b>	RSH-005 <b>16.23</b>	RSH2-005 <b>16.23</b>	500	0	299
<b>3/4</b>	RSH-007 <b>19.57</b>	RSH2-007 <b>19.57</b>	300	0	299
<b>1</b>	RSH-010 <b>20.67</b>	RSH2-010 <b>20.67</b>	210	0	299
<b>1-1/4</b>	RSH-012 <b>24.58</b>	RSH2-012 <b>24.58</b>	200	0	299
<b>1-1/2</b>	RSH-015 <b>24.58</b>	RSH2-015 <b>24.58</b>	100	0	299
<b>2</b>	RSH-020 <b>31.87</b>	RSH2-020 <b>31.87</b>	60	0	299
<b>2-1/2 &amp; 3</b>	RSH-030 <b>68.21</b>	RSH2-030 <b>68.21</b>	25	0	299
<b>4</b>	RSH-040 <b>91.69</b>	RSH2-040 <b>91.69</b>	16	0	299
<b>6</b>	---	RSH2-060 <b>111.00</b>	16	0	299

Valves Product  
**Ball Valve Accessories**



**Ball Valve Accessories**

**2" Operator Nuts**



Industrial & Regular (VTN2 Series) Operator Nuts fit Regular True Union, True Union 2000, Compact, Compact 2000 and Single Entry Ball Valves in sizes 1/2" - 2" with current 3-Slot Stems and in sizes 2- 1/2", 3", and 4" with current 1-Slot Stems. The VTN-040 fits the 6" size with a Double-Flat Stem pattern.

**2" Operator Nuts**

Part Number	Size	Std Pk	Mstr Ctn	Prod Code	MSRP
<b>Regular</b>					
VTN-030	2-1/2 & 3	10	40	299	125.81
VTN-040	4	5	0	299	125.81

**Industrial**

VTN2-005	1/2	10	60	299	15.12
VTN2-007	3/4	10	60	299	20.12
VTN2-010	1	10	60	299	25.19
VTN2-012	1-1/4	10	60	299	30.19
VTN2-015	1-1/2	10	60	299	45.31
VTN2-020	2	10	60	299	75.48
VTN2-030	2-1/2 & 3	10	40	299	82.57
VTN2-040	4	5	0	299	87.54

**Handle Lockout Ring**



Spears® Handle Lockout Ring is for use with Spears® True Union 2000 Industrial Ball Valves with built-in handle lockout mechanism. Normal handle lockout operation allows lockout in both open and closed positions. The Lockout Ring limits lockout operation to either a lock-open only or a lock-closed only position, according to the position in which the Lockout Ring is installed.

**Handle Lockout Ring**

Part Number	Size	Std Pk	Mstr Ctn	Prod Code	MSRP
TU2LR-005	1/2	1	50	299	23.29
TU2LR-007	3/4	1	50	299	23.29
TU2LR-010	1	1	250	299	23.29

**Handle Lockout Ring (continued)**

Part Number	Size	Std Pk	Mstr Ctn	Prod Code	MSRP
TU2LR-012	1-1/4	1	25	299	23.29
TU2LR-015	1-1/2	1	25	299	26.20
TU2LR-020	2	1	25	299	26.20
TU2LR-030	2-1/2 & 3	1	25	299	29.12
TU2LR-040	4	1	25	299	29.12

**Multi-Mount Mounting Bracket**



TUMB2 fits all True Union 2000 Ball Valves (except 3-Way). TUMB fits Regular True Union Ball Valves.

**Multi-Mount Mounting Bracket**

Size	TU 2000	Regular True Union	Std Pk	Mstr Pk	Prod Code
1/2	TUMB2-005 105.26	TUMB-005 105.26	1	10	298
3/4	TUMB2-007 105.26	TUMB-007 105.26	1	10	298
1	TUMB2-010 105.26	TUMB-010 105.26	1	10	298
1-1/4	TUMB2-012 147.55	TUMB-012 147.55	1	10	298
1-1/2	TUMB2-015 147.55	TUMB-015 147.55	1	10	298
2	TUMB2-020 147.55	TUMB-020 147.55	1	10	298
2-1/2, 3	TUMB2-030 333.11	TUMB-030 333.11	1	4	298
4	TUMB2-040 333.11	TUMB-040 333.11	1	4	298



Valves Product  
**Ball Valve Accessories**

**Ball Valve Accessories**

**Multi-Mount Actuator Mounting Platform**



Add-on actuator adapter. Use MMP1 with True Union 2000 Multi-Mount Bracket. Use MMP with Regular True Union.

**Multi-Mount Actuator Mounting Platform**

Size	TU 2000	Regular True Union	Std Pk	Mstr Pk	Prod Code
1/2	MMP1-005 <b>23.29</b>	MMP-005 <b>23.29</b>	1	10	299
3/4	MMP1-007 <b>24.08</b>	MMP-007 <b>24.08</b>	1	10	299
1	MMP1-010 <b>28.13</b>	MMP-010 <b>28.13</b>	1	10	299
1-1/4	MMP1-012 <b>30.72</b>	MMP-012 <b>30.72</b>	1	10	299
1-1/2	MMP1-015 <b>41.97</b>	MMP-015 <b>41.97</b>	1	10	299
2	MMP1-020 <b>47.48</b>	MMP-020 <b>47.48</b>	1	10	299
2-1/2, 3	MMP1-030 <b>107.14</b>	MMP-030 <b>107.14</b>	1	5	299
4	MMP1-040 <b>123.45</b>	MMP-040 <b>123.45</b>	1	5	299

**True Union Multi-Mount Mounting Kit**



Complete Multi-Mount Actuation Mounting Kit fits all True Union 2000 (except 3-Way) and Regular True Union Ball Valves.

**True Union Multi-Mount Mounting Kit**

Size	TU 2000	Regular True Union	Std Pk	Mstr Pk	Prod Code
1/2	TUAK1-005 <b>74.46</b>	TUAK-005 <b>74.46</b>	1	5	299
3/4	TUAK1-007 <b>78.35</b>	TUAK-007 <b>78.35</b>	1	5	299
1	TUAK1-010 <b>86.39</b>	TUAK-010 <b>86.39</b>	1	5	299
1-1/4	TUAK1-012 <b>91.60</b>	TUAK-012 <b>91.60</b>	1	5	299
1-1/2	TUAK1-015 <b>107.13</b>	TUAK-015 <b>107.13</b>	1	5	299
2	TUAK1-020 <b>120.09</b>	TUAK-020 <b>120.09</b>	1	5	299
2-1/2 & 3	TUAK1-030 <b>244.25</b>	TUAK-030 <b>244.25</b>	1	5	299
4	TUAK1-040 <b>291.52</b>	TUAK-040 <b>291.52</b>	1	2	299

**True Union 2000 Low Profile Actuator Mounting Kit**



**Industrial Unit** - Top-mount actuator mounting system for True Union 2000 Industrial (1800 series) & 3-Way Ball Valves

**Standard Unit** - Top-mount actuator mounting system for True Union 2000 Standard Ball Valves (3600 series) and Compact 2000 Ball Valves (6600 series)  
 Note: Low Profile Mounting Kit will not work with Multi-Mount Valve Mounting Bracket - See Mini-Mount actuation Mounting Kit or Mini-Mount Combo Actuation Mounting Kit

**True Union 2000 Low Profile Actuator Mounting Kit**

Size	TU 2000 Industrial	TU 2000 Standard & Compact	Std Pk	Mstr Pk	Prod Code
Does Not Fit 3-way Full Port Valves					
1/2	<b>AMB5-005</b> <b>83.39</b>	<b>AMB6-005</b> <b>83.39</b>	1	10	298
3/4	<b>AMB5-007</b> <b>83.39</b>	<b>AMB6-007</b> <b>83.39</b>	1	10	298
1	<b>AMB5-010</b> <b>83.39</b>	<b>AMB6-010</b> <b>83.39</b>	1	10	298
1-1/4	<b>AMB5-012</b> <b>137.75</b>	<b>AMB6-012</b> <b>137.75</b>	1	10	298
1-1/2	<b>AMB5-015</b> <b>137.75</b>	<b>AMB6-015</b> <b>137.75</b>	1	10	298
2	<b>AMB5-020</b> <b>137.75</b>	<b>AMB6-020</b> <b>137.75</b>	1	10	298



Valves Product  
**Ball Valve Accessories**



**Ball Valve Accessories**

**True Union 2000 Low Profile Actuator Mounting Kit (continued)**

Size	TU 2000 Industrial	TU 2000 Standard & Compact	Std Pk	Mstr Pk	Prod Code
3	AMB5-030 311.87	AMB6-030 311.87	1	10	298
4	AMB5-040 311.87	AMB6-040 311.87	1	5	298
6	AMB5-060 311.87	---	1	5	298

**Mini-Mount Actuator Mounting Kit**



**Industrial Unit** – Top-mount actuator mounting system for True Union 2000 Industrial (1800 series) & 3-Way Ball Valves (Regular)

**Standard Unit** – Top-mount actuator mounting system for True Union 2000 Standard Ball Valves (3600 series) and Compact 2000 Ball Valves (6600 series)

**Compact Unit** – Top-mount actuator mounting system for Regular Style Compact Ball Valves (2100 series)

**Industrial True Union 3-Way Full Port Valve Unit** – Top-mount actuator mounting system for For 3-Way Full Port Ball Valves Only

**Mini-Mount Actuator Mounting Kit**

Size	TU 2000 Industrial	TU 2000 Standard/Compact	Compact (Regular)	Std Pk	Mstr Pk	Prod Code
1/2	AMB2-005 83.39	AMB3-005 83.39	AMB4-005 83.39	1	10	298
3/4	AMB2-007 83.39	AMB3-007 83.39	AMB4-007 83.39	1	10	298
1	AMB2-010 83.39	AMB3-010 83.39	AMB4-010 83.39	1	10	298
1-1/4	AMB2-012 137.75	AMB3-012 137.75	AMB4-012 137.75	1	10	298
1-1/2	AMB2-015 137.75	AMB3-015 137.75	AMB4-015 137.75	1	10	298
2	AMB2-020 137.75	AMB3-020 137.75	AMB4-020 137.75	1	10	298
3	AMB2-030 311.87	AMB3-030 311.87	AMB3-030 311.87	1	10	298
4	AMB2-040 311.87	AMB3-040 311.87	AMB3-040 311.87	1	5	298
6	AMB2-060 311.87	---	AMB2-060 311.87	1	5	298

**3-Way Full Port Mini-Mount Actuator Mounting Kit**

Part Number	Size	Std Pk	Mstr Ctn	Prod Code	MSRP
-------------	------	--------	----------	-----------	------

**For 3-Way Full Port Ball Valves Only**

AMB7-005	1/2	1	10	298	83.39
AMB7-007	3/4	1	10	298	83.39

Made in the U.S.A.

Suitable for Oil-Free air handling to 25 psi, not for distribution of compressed air or gas

Effective 10/01/2018 See MSRP-1 Sheet or Check Spears® On-line Catalog @ [www.spearsmfg.com](http://www.spearsmfg.com) for Pricing

**3-Way Full Port Mini-Mount Actuator Mounting Kit (continued)**

Part Number	Size	Std Pk	Mstr Ctn	Prod Code	MSRP
-------------	------	--------	----------	-----------	------

**For 3-Way Full Port Ball Valves Only**

AMB7-010	1	1	10	298	83.39
AMB7-012	1-1/4	1	10	298	137.75
AMB7-015	1-1/2	1	10	298	137.75
AMB7-020	2	1	10	298	137.75

**True Union 2000 Mini-Mount Combo**



**Industrial Unit** – Top-mount actuator mounting system with valve support mounting bracket for True Union 2000 Industrial (1800 series) Ball Valve (will not fit 3-Way)

**Standard Unit** – Top-mount actuator mounting system with valve support mounting bracket for True Union 2000 (3600 series) Standard Ball Valve

**True Union 2000 Mini-Mount Combo**

Size	Industrial	Standard	Std Pk	Mstr Pk	Prod Code
1/2	TUAK2-005 74.46	TUAK3-005 74.46	1	5	299
3/4	TUAK2-007 78.35	TUAK3-007 78.35	1	10	299
1	TUAK2-010 86.39	TUAK3-010 86.39	1	5	299
1-1/4	TUAK2-012 91.60	TUAK3-012 91.60	1	5	299
1-1/2	TUAK2-015 107.13	TUAK3-015 107.13	1	5	299
2	TUAK2-020 120.09	TUAK3-020 120.09	1	5	299
3	TUAK2-030 244.25	TUAK3-030 244.25	1	5	299
4	TUAK2-040 291.52	TUAK3-040 291.52	1	2	299



Valves Product  
**Ball Valve Accessories**

**Ball Valve Accessories**

**True Union 2000 Valve Repair Kits — Industrial Ball Valve**

Industrial Kit includes:

- |                         |                                   |
|-------------------------|-----------------------------------|
| 2-PTFE Seats            | 1-Seal Carrier O-ring             |
| 2-End Connector O-rings | 1-PTFE Stem Bearing               |
| 2-Stem O-rings          | 2-Seat O-rings (where applicable) |

**True Union 2000 Valve Repair Kits**

Size	EPDM	FKM	Std Pk	Mstr Pk	Prod Code
------	------	-----	--------	---------	-----------

**Industrial Ball Valve**

1/2	TU2-ERK-005 <b>22.95</b>	TU2-VRK-005 <b>25.98</b>	1	10	299
3/4	TU2-ERK-007 <b>25.98</b>	TU2-VRK-007 <b>26.86</b>	1	10	299
1	TU2-ERK-010 <b>26.86</b>	TU2-VRK-010 <b>34.26</b>	1	10	299
1-1/4	TU2-ERK-012 <b>32.65</b>	TU2-VRK-012 <b>54.89</b>	1	10	299
1-1/2	TU2-ERK-015 <b>46.86</b>	TU2-VRK-015 <b>71.86</b>	1	10	299
2	TU2-ERK-020 <b>53.94</b>	TU2-VRK-020 <b>100.61</b>	1	10	299
2-1/2 & 3	TU2-ERK-030 <b>124.49</b>	TU2-VRK-030 <b>163.24</b>	1	10	299
4	TU2-ERK-040 <b>177.05</b>	TU2-VRK-040 <b>211.58</b>	1	10	299
6	TU2-ERK-060 <b>322.56</b>	TU2-VRK-060 <b>411.11</b>	1	10	299

**True Union 2000 Valve Repair Kits — Standard Ball Valve**

Standard Kit includes:

- |                         |                                   |
|-------------------------|-----------------------------------|
| 2-HDPE/PTFE Seats       | 1-Seal Carrier O-ring             |
| 2-End Connector O-rings | 2-Seat O-rings (where applicable) |
| 2-Stem O-rings          |                                   |

**Standard Ball Valve**

1/2	TU1-ERK-005 <b>21.84</b>	TU1-VRK-005 <b>24.69</b>	1	10	299
3/4	TU1-ERK-007 <b>24.69</b>	TU1-VRK-007 <b>25.55</b>	1	10	299
1	TU1-ERK-010 <b>25.55</b>	TU1-VRK-010 <b>32.52</b>	1	10	299
1-1/4	TU1-ERK-012 <b>30.99</b>	TU1-VRK-012 <b>52.16</b>	1	10	299
1-1/2	TU1-ERK-015 <b>44.54</b>	TU1-VRK-015 <b>68.28</b>	1	10	299
2	TU1-ERK-020 <b>51.23</b>	TU1-VRK-020 <b>105.92</b>	1	10	299

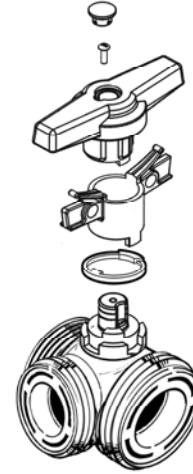
**True Union 2000 Valve Repair Kits (continued)**

Size	EPDM	FKM	Std Pk	Mstr Pk	Prod Code
------	------	-----	--------	---------	-----------

**Standard Ball Valve**

2-1/2 & 3	TU1-ERK-030 <b>118.26</b>	TU1-VRK-030 <b>155.07</b>	1	10	299
4	TU1-ERK-040 <b>168.22</b>	TU1-VRK-040 <b>201.00</b>	1	10	299

**3-Way Full Port Adjustable Stop Ring**



- The Adjustable Stop Ring (sold separately)
- Must be used with any "MIXING" Port Option to provide proper mid-way handle stop function
- For 3-Way Full Port Ball Valves Only

Part Number	Size	Std Pk	Mstr Ctn	Prod Code	MSRP
-------------	------	--------	----------	-----------	------

**3-Way Full Port Adjustable Stop Ring**

**Required for handle positioning when using MIXING Ball Port Options**



For 3-Way Full Port Ball Valves Only

ASR-005	<b>1/2</b>	1	150	299	16.18
ASR-007	<b>3/4</b>	1	150	299	17.84
ASR-010	<b>1</b>	1	100	299	18.73
ASR-012	<b>1-1/4</b>	1	100	299	19.58
ASR-015	<b>1-1/2</b>	1	100	299	20.78
ASR-020	<b>2</b>	1	100	299	22.41

**True Union 3-Way Full Port Ball Valve Repair Kits**

3-Way Kit includes:

- |                         |                       |
|-------------------------|-----------------------|
| 3-PTFE Seats            | 2-Stem O-rings        |
| 3-End Connector O-rings | 3-Seal Carrier O-ring |

**3-Way Full Port Valve Repair Kit**

Size	EPDM	FKM	Std Pk	Mstr Pk	Prod Code
1/2	TU5-ERK-005 <b>32.81</b>	TU5-VRK-005 <b>37.15</b>	1	10	299

Valves Product  
**Ball Valve Accessories**



**Ball Valve Accessories**

**3-Way Full Port Valve Repair Kit (continued)**

Size	EPDM	FKM	Std Pk	Mstr Pk	Prod Code
3/4	TU5-ERK-007 37.15	TU5-VRK-007 38.40	1	10	299
1	TU5-ERK-010 38.40	TU5-VRK-010 48.93	1	10	299
1-1/4	TU5-ERK-012 46.62	TU5-VRK-012 78.41	1	10	299
1-1/2	TU5-ERK-015 66.97	TU5-VRK-015 102.69	1	10	299
2	TU5-ERK-020 77.07	TU5-VRK-020 143.71	1	10	299

**True Union 2000 Valve Repair Kits — 3-Way Ball Valve**  
3-Way Kit includes:

- 2-PTFE Seats (no branch seal)
- 3-End Connector O-rings
- 2-Stem O-rings
- 1-Seal Carrier O-ring
- 1-Stem Bushing
- 2-Seat O-rings (where applicable)

**True Union 2000 Valve Repair Kits**

Size	EPDM	FKM	Std Pk	Mstr Pk	Prod Code
------	------	-----	--------	---------	-----------

**3-Way Ball Valve**

1/2	TU3-ERK-005 32.81	TU3-VRK-005 37.15	1	10	299
3/4	TU3-ERK-007 37.15	TU3-VRK-007 38.40	1	10	299
1	TU3-ERK-010 38.40	TU3-VRK-010 48.93	1	10	299
1-1/4	TU3-ERK-012 46.62	TU3-VRK-012 78.41	1	10	299
1-1/2	TU3-ERK-015 66.97	TU3-VRK-015 102.69	1	10	299
2	TU3-ERK-020 77.07	TU3-VRK-020 143.71	1	10	299
2-1/2 & 3	TU3-ERK-030 177.83	TU3-VRK-030 233.19	1	10	299
4	TU3-ERK-040 239.04	TU3-VRK-040 302.25	1	10	299

**True Union 2000 Valve Repair Kits — Ball Check Valve**  
Ball Check Kit includes:

- 2-End Connector O-rings
- 1-Stem Bushing
- 1-Seal Plate O-ring

**True Union 2000 Valve Repair Kits**

Size	EPDM	FKM	Std Pk	Mstr Pk	Prod Code
------	------	-----	--------	---------	-----------

**Ball Check Valve**

1/2	CK2-ERK-005 3.93	CK2-VRK-005 7.28	1	10	299
3/4	CK2-ERK-007 4.72	CK2-VRK-007 12.03	1	10	299
1	CK2-ERK-010 6.15	CK2-VRK-010 19.57	1	10	299
1-1/4	CK2-ERK-012 9.23	CK2-VRK-012 31.29	1	10	299

**True Union 2000 Valve Repair Kits (continued)**

Size	EPDM	FKM	Std Pk	Mstr Pk	Prod Code
------	------	-----	--------	---------	-----------

**Ball Check Valve**

1-1/2	CK2-ERK-015 9.23	CK2-VRK-015 31.29	1	10	299
2	CK2-ERK-020 13.68	CK2-VRK-020 33.78	1	10	299
3	CK2-ERK-030 19.97	CK2-VRK-030 94.20	1	10	299
4	CK2-ERK-040 25.83	CK2-VRK-040 101.74	1	10	299
6	CK2-ERK-060 47.12	CK2-VRK-060 244.14	1	10	299

**Single Entry Ball Valve Repair Kit**  
Single Entry Kit includes:

- 2-End Connector O-rings
- 1-Seal Carrier O-ring
- 1-Seal Plate O-ring
- 1-Stem Bearing (1-1/4" & up)

**Single Entry Ball Valve Repair Kits**

Size	Buna-N	EPDM	FKM	Std Pk	Mstr Pk	Prod Code
1/2	SE-BRK-005 18.74	SE-ERK-005 19.85	SE-VRK-005 23.22	1	10	299
3/4	SE-BRK-007 19.29	SE-ERK-007 20.43	SE-VRK-007 23.48	1	10	299
1	SE-BRK-010 20.67	SE-ERK-010 21.51	SE-VRK-010 24.58	1	10	299
1-1/4, 1-1/2	SE-BRK-015 26.29	SE-ERK-015 29.08	SE-VRK-015 34.94	1	10	299
2	SE-BRK-020 29.91	SE-ERK-020 30.74	SE-VRK-020 36.63	1	10	299
3	SE-BRK-030 68.77	SE-ERK-030 69.09	SE-VRK-030 75.41	1	10	299
4	SE-BRK-040 126.91	SE-ERK-040 126.96	SE-VRK-040 130.78	1	10	299

**True Union Valve Repair Kits (Regular Style)**  
Ball Valve Kit includes:

- 2-PTFE Seats
- 2-Seat O-rings (2-1/2")
- 2-End Connector O-rings
- 1-Stem Bearing (1-1/4" & up)

**True Union Valve Repair Kits (Regular Style)**

Size	EPDM	FKM	Std Pk	Mstr Pk	Prod Code
------	------	-----	--------	---------	-----------

**Ball Valve**

1/2	TU-ERK-005 22.95	TU-VRK-005 25.98	1	10	299
3/4	TU-ERK-007 25.98	TU-VRK-007 26.86	1	10	299
1	TU-ERK-010 26.86	TU-VRK-010 34.26	1	10	299
1-1/4	TU-ERK-012 32.65	TU-VRK-012 54.89	1	10	299
1-1/2	TU-ERK-015 46.86	TU-VRK-015 71.86	1	10	299
2	TU-ERK-020 53.94	TU-VRK-020 100.61	1	10	299
2-1/2, 3	TU-ERK-030 124.49	TU-VRK-030 163.24	1	10	299



Valves Product  
**Ball Valve Accessories**

**Ball Valve Accessories**

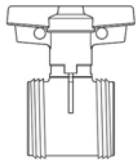
**True Union Valve Repair Kits (Regular Style) (continued)**

Size	EPDM	FKM	Std Pk	Mstr Pk	Prod Code
<b>Ball Valve</b> 4, 6 <b>VENTURIED</b>	TU-ERK-040 <b>177.05</b>	TU-VRK-040 <b>211.58</b>	1	10	299

**True Union Ball Check Valve Repair Kits (Regular Style)**  
Ball Check (Regular Style) Kit includes:

- 1-Body O-ring  
2-Seat-plate O-rings  
**Ball Check Valve**
- 2-End Connector O-rings

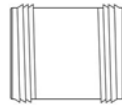
Size	EPDM	FKM	Std Pk	Mstr Pk	Prod Code
1/2	CK-ERK-005 <b>3.93</b>	CK-VRK-005 <b>7.28</b>	1	10	299
3/4	CK-ERK-007 <b>4.72</b>	CK-VRK-007 <b>12.03</b>	1	10	299
1	CK-ERK-010 <b>6.15</b>	CK-VRK-010 <b>19.57</b>	1	10	299
1-1/4	CK-ERK-012 <b>9.23</b>	CK-VRK-012 <b>31.29</b>	1	10	299
1-1/2	CK-ERK-015 <b>9.23</b>	CK-VRK-015 <b>31.29</b>	1	10	299
2	CK-ERK-020 <b>13.68</b>	CK-VRK-020 <b>33.78</b>	1	10	299
2-1/2 OR 3	CK-ERK-030 <b>19.97</b>	CK-VRK-030 <b>94.20</b>	1	10	299
4	CK-ERK-040 <b>25.83</b>	CK-VRK-040 <b>101.74</b>	1	10	299



True Union 2000  
Industrial  
Ball Valve Cartridge



True Union 2000  
Standard  
Ball Valve Cartridge



True Union 2000 Industrial  
Ball Check Valve Cartridge

True Union Ball Valve Cartridge Kits include valve assembly, less union nuts and end connectors.

Note: 6" Valve uses Lever-Style Handle for proper leverage. T-Style Handle is more compact, but will increase difficulty of operation.

**PVC True Union 2000 Industrial Ball Valve Cartridges**

Size	EPDM	FKM	Std Pk	Mstr Pk	Prod Code
1/2	1820-005 <b>40.27</b>	1830-005 <b>45.77</b>	1	18	299
3/4	1820-007 <b>47.75</b>	1830-007 <b>51.14</b>	1	18	299

**PVC True Union 2000 Industrial Ball Valve Cartridges (continued)**

Size	EPDM	FKM	Std Pk	Mstr Pk	Prod Code
1	1820-010 <b>57.05</b>	1830-010 <b>64.79</b>	1	18	299
1-1/4	1820-012 <b>73.66</b>	1830-012 <b>86.61</b>	1	8	299
1-1/2	1820-015 <b>95.98</b>	1830-015 <b>108.43</b>	1	8	299
2	1820-020 <b>122.99</b>	1830-020 <b>130.93</b>	1	8	299
2-1/2	1820-025 <b>269.84</b>	1830-025 <b>338.33</b>	1	0	299
3	1820-030 <b>329.29</b>	1830-030 <b>365.81</b>	1	0	299
4	1820-040 <b>556.39</b>	1830-040 <b>617.99</b>	1	0	299
6 (T-Style Handle)	18206-060 <b>1029.04</b>	18306-060 <b>1141.65</b>	1	0	299
6 (Lever Handle)	1820-060 <b>1029.04</b>	1830-060 <b>1141.65</b>	1	0	299

**CPVC True Union 2000 Industrial Ball Valve Cartridges**

Size	EPDM	FKM	Std Pk	Mstr Pk	Prod Code
1/2	1820-005C <b>56.79</b>	1830-005C <b>61.97</b>	1	18	299
3/4	1820-007C <b>69.44</b>	1830-007C <b>75.75</b>	1	18	299
1	1820-010C <b>86.45</b>	1830-010C <b>88.27</b>	1	18	299
1-1/4	1820-012C <b>116.54</b>	1830-012C <b>121.18</b>	1	8	299
1-1/2	1820-015C <b>146.64</b>	1830-015C <b>153.95</b>	1	8	299
2	1820-020C <b>198.54</b>	1830-020C <b>202.28</b>	1	8	299
2-1/2	1820-025C <b>417.94</b>	1830-025C <b>464.34</b>	1	0	299
3	1820-030C <b>488.69</b>	1830-030C <b>541.68</b>	1	0	299
4	1820-040C <b>885.35</b>	1830-040C <b>983.87</b>	1	0	299
6 (T-Style Handle)	18206-060C <b>1615.41</b>	18306-060C <b>1794.03</b>	1	0	299
6 (Lever Handle)	1820-060C <b>1615.41</b>	1830-060C <b>1794.03</b>	1	0	299

**PVC True Union 2000 Industrial Ball Check Valve Cartridges**

Size	EPDM	FKM	Std Pk	Mstr Pk	Prod Code
1/2	4520-005 <b>47.56</b>	4530-005 <b>53.62</b>	1	10	299

Valves Product  
**Ball Valve Accessories**



**Ball Valve Accessories**

**PVC True Union 2000 Industrial Ball Check Valve Cartridges**

(continued)

Size	EPDM	FKM	Std Pk	Mstr Pk	Prod Code
3/4	4520-007 <b>56.72</b>	4530-007 <b>59.86</b>	1	10	299
1	4520-010 <b>67.41</b>	4530-010 <b>75.16</b>	1	6	299
1-1/4	4520-012 <b>103.96</b>	4530-012 <b>110.52</b>	1	4	299
1-1/2	4520-015 <b>113.12</b>	4530-015 <b>125.52</b>	1	4	299
2	4520-020 <b>154.41</b>	4530-020 <b>171.73</b>	1	4	299
2-1/2	4520-025 <b>374.35</b>	4530-025 <b>398.69</b>	1	4	299
3	4520-030 <b>448.26</b>	4530-030 <b>569.13</b>	1	4	299
4	4520-040 <b>702.20</b>	4530-040 <b>739.82</b>	1	0	299
6	4520-060 <b>1182.44</b>	4530-060 <b>1312.51</b>	1	0	299

**CPVC True Union 2000 Industrial Ball Check Valve Cartridges**

Size	EPDM	FKM	Std Pk	Mstr Pk	Prod Code
1/2	4520-005C <b>70.27</b>	4530-005C <b>78.22</b>	1	18	299
3/4	4520-007C <b>84.13</b>	4530-007C <b>93.48</b>	1	18	299
1	4520-010C <b>99.29</b>	4530-010C <b>110.31</b>	1	18	299
1-1/4	4520-012C <b>170.94</b>	4530-012C <b>189.82</b>	1	12	299
1-1/2	4520-015C <b>170.94</b>	4530-015C <b>189.82</b>	1	8	299
2	4520-020C <b>228.33</b>	4530-020C <b>254.43</b>	1	8	299
2-1/2	4520-025C <b>478.47</b>	4530-025C <b>531.62</b>	1	4	299
3	4520-030C <b>564.57</b>	4530-030C <b>673.20</b>	1	4	299
4	4520-040C <b>1049.96</b>	4530-040C <b>1167.39</b>	1	0	299
6	4520-060C <b>1861.99</b>	4530-060C <b>2063.91</b>	1	0	299

**PVC True Union 2000 Standard Ball Valve Cartridges**

Size	EPDM	FKM	Std Pk	Mstr Pk	Prod Code
1/2	3620-005 <b>31.16</b>	3630-005 <b>34.62</b>	1	18	299
3/4	3620-007 <b>36.83</b>	3630-007 <b>40.99</b>	1	18	299
1	3620-010 <b>43.91</b>	3630-010 <b>48.85</b>	1	18	299
1-1/4	3620-012 <b>60.72</b>	3630-012 <b>77.49</b>	1	12	299
1-1/2	3620-015 <b>73.11</b>	3630-015 <b>81.19</b>	1	12	299

**PVC True Union 2000 Standard Ball Valve Cartridges (continued)**

Size	EPDM	FKM	Std Pk	Mstr Pk	Prod Code
2	3620-020 <b>96.52</b>	3630-020 <b>106.24</b>	1	8	299
2-1/2 & 3	3620-030 <b>244.52</b>	3630-030 <b>271.67</b>	1	0	299
4	3620-040 <b>413.05</b>	3630-040 <b>459.09</b>	1	0	299

**CPVC True Union 2000 Standard Ball Valve Cartridges**

Size	EPDM	FKM	Std Pk	Mstr Pk	Prod Code
1/2	3620-005C <b>41.12</b>	3630-005C <b>45.69</b>	1	18	299
3/4	3620-007C <b>51.81</b>	3630-007C <b>57.55</b>	1	18	299
1	3620-010C <b>61.42</b>	3630-010C <b>68.54</b>	1	18	299
1-1/4	3620-012C <b>98.01</b>	3630-012C <b>108.94</b>	1	12	299
1-1/2	3620-015C <b>103.54</b>	3630-015C <b>115.04</b>	1	12	299
2	3620-020C <b>138.48</b>	3630-020C <b>159.19</b>	1	8	299
2-1/2 & 3	3620-030C <b>363.02</b>	3630-030C <b>403.36</b>	1	0	299
4	3620-040C <b>754.87</b>	3630-040C <b>730.86</b>	1	0	299

**PVC True Union Ball Valve Cartridges (Regular Style)**

Size	EPDM	FKM	Std Pk	Mstr Pk	Prod Code
1/2	2320-005 <b>40.27</b>	2330-005 <b>45.77</b>	1	10	299
3/4	2320-007 <b>47.75</b>	2330-007 <b>51.14</b>	1	10	299
1	2320-010 <b>57.05</b>	2330-010 <b>64.79</b>	1	10	299
1-1/4	2320-012 <b>73.66</b>	2330-012 <b>86.61</b>	1	4	299
1-1/2	2320-015 <b>95.98</b>	2330-015 <b>108.43</b>	1	4	299
2	2320-020 <b>122.99</b>	2330-020 <b>130.93</b>	1	4	299
2-1/2, 3	2320-030 <b>269.84</b>	2330-030 <b>314.94</b>	1	0	299
4	2320-040 <b>494.75</b>	2330-040 <b>520.79</b>	1	0	299

**CPVC True Union Ball Valve Cartridges (Regular Style)**

Size	EPDM	FKM	Std Pk	Mstr Pk	Prod Code
1/2	2320-005C <b>56.79</b>	2330-005C <b>61.97</b>	1	10	299
3/4	2320-007C <b>69.44</b>	2330-007C <b>75.75</b>	1	10	299
1	2320-010C <b>86.45</b>	2330-010C <b>88.27</b>	1	10	299
1-1/4	2320-012C <b>116.54</b>	2330-012C <b>121.18</b>	1	4	299
1-1/2	2320-015C <b>146.64</b>	2330-015C <b>153.95</b>	1	4	299

Made in the U.S.A.

Suitable for Oil-Free air handling to 25 psi, not for distribution of compressed air or gas

Effective 10/01/2018 See MSRP-1 Sheet or Check Spears® On-line Catalog @ [www.spearsmfg.com](http://www.spearsmfg.com) for Pricing





Valves Product  
**Ball Valve Accessories**

**Ball Valve Accessories**

**CPVC True Union Ball Valve Cartridges (Regular Style) (continued)**

Size	EPDM	FKM	Std Pk	Mstr Pk	Prod Code
2	2320-020C <b>198.54</b>	2330-020C <b>202.28</b>	1	4	299
2-1/2, 3	2320-030C <b>377.34</b>	2330-030C <b>384.17</b>	1	0	299
4	2320-040C <b>623.93</b>	2330-040C <b>744.35</b>	1	0	299

**PVC True Union Ball Check Valve Cartridges (Regular Style)**

Size	EPDM	FKM	Std Pk	Mstr Pk	Prod Code
1/2	2220-005 <b>44.22</b>	2230-005 <b>49.85</b>	1	10	299
3/4	2220-007 <b>52.71</b>	2230-007 <b>55.67</b>	1	10	299
1	2220-010 <b>62.73</b>	2230-010 <b>69.89</b>	1	6	299
1-1/4	2220-012 <b>91.61</b>	2230-012 <b>85.09</b>	1	4	299
1-1/2	2220-015 <b>105.20</b>	2230-015 <b>116.75</b>	1	4	299
2	2220-020 <b>143.62</b>	2230-020 <b>159.71</b>	1	4	299
2-1/2	2220-025 <b>348.15</b>	2230-025 <b>370.79</b>	1	0	299
3	2220-030 <b>348.15</b>	2230-030 <b>370.79</b>	1	0	299
4	2220-040 <b>653.03</b>	2230-040 <b>688.06</b>	1	0	299

**CPVC True Union Ball Check Valve Cartridges (Regular Style)**

Size	EPDM	FKM	Std Pk	Mstr Pk	Prod Code
1/2	2220-005C <b>65.35</b>	2230-005C <b>72.77</b>	1	10	299
3/4	2220-007C <b>78.20</b>	2230-007C <b>86.94</b>	1	10	299
1	2220-010C <b>92.33</b>	2230-010C <b>102.57</b>	1	6	299
1-1/4	2220-012C <b>158.96</b>	2230-012C <b>176.54</b>	1	4	299
1-1/2	2220-015C <b>170.94</b>	2230-015C <b>189.92</b>	1	4	299
2	2220-020C <b>212.88</b>	2230-020C <b>236.61</b>	1	4	299
2-1/2	2220-025C <b>444.98</b>	2230-025C <b>494.39</b>	1	0	299
3	2220-030C <b>444.98</b>	2230-030C <b>494.39</b>	1	0	299
4	2220-040C <b>976.46</b>	2230-040C <b>1085.67</b>	1	0	299