



**Transition Fittings Product**  
**CPVC Gray Special Reinforced (SR) Fittings & CPVC Gray Brass Thread Fittings**

**CPVC Gray Special Reinforced (SR) Fittings**

Part Number	Size	Std Pk	Mstr Ctn	Prod Code	MSRP
-------------	------	--------	----------	-----------	------

**Tank Adapters, CPVC New Style Special Reinforced (SR) Threaded with EPDM Gaskets**

**Fipt x SR Fipt - Stainless Steel Collar**

150 psi Maximum Internal Pressure Rating @ 73°F (23°C)

8172E-002CSR	1/4	25	150	101	72.16
8172E-003CSR	3/8	25	200	101	72.16
8172E-005CSR	1/2	25	0	101	72.16
8172E-007CSR	3/4	25	0	101	85.44
8172E-010CSR	1	25	0	101	92.76
8172E-012CSR	1-1/4	20	0	101	130.93
8172E-015CSR	1-1/2	20	0	101	152.21
8172E-020CSR	2	15	0	101	186.82
8172E-025CSR	2-1/2	4	0	101	281.83
8172E-030CSR	3	4	0	101	335.51
8172E-040CSR	4	2	0	101	543.15
8172E-060CSR	6	2	0	101	1256.18



**Tank Adapters, CPVC New Style Special Reinforced (SR) Threaded with FKM Gaskets**

**Fipt x SR Fipt - Stainless Steel Collar**

150 psi Maximum Internal Pressure Rating @ 73°F (23°C)

8172V-002CSR	1/4	25	150	101	110.80
8172V-003CSR	3/8	25	200	101	110.80
8172V-005CSR	1/2	25	0	101	110.80
8172V-007CSR	3/4	25	0	101	125.35
8172V-010CSR	1	25	0	101	144.77
8172V-012CSR	1-1/4	20	0	101	178.74
8172V-015CSR	1-1/2	20	0	101	188.24
8172V-020CSR	2	15	0	101	289.31
8172V-025CSR	2-1/2	4	0	101	418.04
8172V-030CSR	3	4	0	101	497.67
8172V-040CSR	4	2	0	101	1269.91
8172V-060CSR	6	2	0	101	2305.82

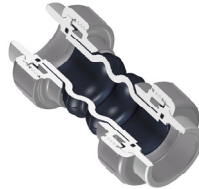


**Elastomer Expansion Joint - CPVC**

**CPVC with EPDM Bellows SR Fipt - Stainless Steel Collar**

150 psi Maximum Internal Pressure Rating @ 73°F (23°C)

EJ21-007CSR	3/4	10	0	085	219.18
EJ21-010CSR	1	10	0	085	252.05
EJ21-012CSR	1-1/4	15	0	085	278.53
EJ21-015CSR	1-1/2	10	0	085	355.02
EJ21-020CSR	2	8	0	085	469.27
EJ21-025CSR	2-1/2	4	0	085	651.72
EJ21-030CSR	3	2	0	085	868.00



**CPVC Gray Brass Thread Fittings**

Part Number	Size	Std Pk	Mstr Ctn	Prod Code	MSRP
-------------	------	--------	----------	-----------	------

**Tee - Brass Transition**

**Socket x Socket x Fipt With Brass Thread Insert**

802-005CBR	1/2	20	140	096	61.45
802-007CBR	3/4	20	80	096	122.89

**Not intended to convey or dispense water for human consumption through drinking or cooking**



**Tee - Brass Transition Reducing**

**Socket x Socket x Fipt With Brass Thread Insert**

802-101CBR	3/4X1/2	50	0	096	76.17
------------	---------	----	---	-----	-------

**Not intended to convey or dispense water for human consumption through drinking or cooking**



**90° Ell - Brass Transition**

**Socket x Fipt With Brass Thread Insert**

807-005CBR	1/2	20	240	096	54.03
807-007CBR	3/4	20	160	096	94.33

**Not intended to convey or dispense water for human consumption through drinking or cooking**



**90° Ell - Brass Transition Reducing**

**Socket x Fipt With Brass Thread Insert**

807-101CBR	3/4X1/2	20	120	096	67.57
------------	---------	----	-----	-----	-------

**Not intended to convey or dispense water for human consumption through drinking or cooking**



**Female Adapter - Brass Transition**

**Socket x Fipt With Brass Thread Insert**

835-005CBR	1/2	25	150	096	33.31
835-007CBR	3/4	15	90	096	68.93
835-010CBR	1	15	90	096	120.97
835-012CBR	1-1/4	15	60	096	197.34
835-015CBR	1-1/2	10	40	096	260.19
835-020CBR	2	8	32	096	324.97

**Not intended to convey or dispense water for human consumption through drinking or cooking**



**Female Adapter - Stainless Steel Transition**

**Socket x Fipt With Type 316 Stainless Steel Thread Insert**

835-005CSS	1/2	25	150	096	65.40
------------	-----	----	-----	-----	-------



NSF® Certified Lead Free

**Transition Fittings Product**  
**CPVC Gray Brass Thread Fittings & CPVC Orange Special Reinforced (SR) Fittings**



**CPVC Gray Brass Thread Fittings**

Part Number	Size	Std Pk	Mstr Ctn	Prod Code	MSRP
-------------	------	--------	----------	-----------	------

**Female Adapter - Stainless Steel Transition (continued)**

**Socket x Fipt With Type 316 Stainless Steel Thread Insert**

835-007CSS	3/4	15	90	096	91.31
835-010CSS	1	15	90	096	159.80
835-012CSS	1-1/4	25	0	096	259.71
835-015CSS	1-1/2	10	40	096	338.81
835-020CSS	2	8	32	096	396.51

**Male Adapter - CPVC Lined Brass Transition**



**Brass Mipt x Socket**

NSF® Certified Lead Free

836-005CBR	1/2	40	160	096	73.83
836-007CBR	3/4	40	160	096	103.95
836-010CBR	1	10	60	096	181.04
836-012CBR	1-1/4	10	40	096	294.48
836-015CBR	1-1/2	10	40	096	382.85
836-020CBR	2	8	32	096	448.63

**Union - Socket/Brass Fipt/FKM**



**Socket x Fipt with Brass Thread Insert & FKM O-ring Seal**

235 psi Maximum Internal Pressure Rating @ 73°F (23°C)

859-007CBR	3/4	10	20	096	153.86
859-010CBR	1	10	0	096	171.37
859-012CBR	1-1/4	5	0	096	287.27
859-015CBR	1-1/2	5	0	096	326.45
859-020CBR	2	5	0	096	368.96

**Not intended to convey or dispense water for human consumption through drinking or cooking**

**Union - Socket/Brass Fipt/EPDM**



**Socket x Fipt with Brass Thread Insert & EPDM O-ring Seal**

235 psi Maximum Internal Pressure Rating @ 73°F (23°C)

899-007CBR	3/4	10	40	096	151.25
899-010CBR	1	10	0	096	169.26
899-012CBR	1-1/4	5	20	096	283.64
899-015CBR	1-1/2	5	0	096	322.28
899-020CBR	2	5	0	096	364.43

**Not intended to convey or dispense water for human consumption through drinking or cooking**

**CPVC Orange Special Reinforced (SR) Fittings**

The CPVC Orange fittings in this section (4200 series part numbers) are approved by Underwriters Laboratories, FM Global, and LPCB for use in CPVC Fire Sprinkler Systems. When installed in these systems, installation must be made in accordance with Spears® publication FG-3, *FlameGuard® CPVC Fire Sprinkler Products Installation Instructions*, and local codes. However, these fittings can also be used in many other types of installations, such as hot water distribution. CPVC fittings may also be used on PVC pipe when installed with a quality CPVC solvent cement meeting the requirements of ASTM F 493, Standard Specification for Solvent Cements for Chlorinated Poly (Vinyl Chloride) (CPVC) Plastic Pipe and Fittings.

Part Number	Size	Std Pk	Mstr Ctn	Prod Code	MSRP
-------------	------	--------	----------	-----------	------

**Sprinkler Head Tee - Special Reinforced Plastic Thread Style**



**Socket x Socket x SR Fipt - Stainless Steel Collar**

NSF® Certified Lead-Free

4202-010SR	1	15	0	076	21.70
4202-101SR	3/4X1/2	50	0	076	7.83
4202-124SR	1X3/4X1/2	50	0	076	8.46
4202-130SR	1X1/2	50	0	076	8.46
4202-156SR	1-1/4X1X1/2	15	0	076	14.10
4202-166SR	1-1/4X1/2	15	0	076	14.10
4202-168SR	1-1/4X1	15	0	076	30.30
4202-199SR	1-1/2X1-1/4X1/2	10	0	076	18.55
4202-209SR	1-1/2X1/2	25	0	076	18.55
4202-211SR	1-1/2X1-1/2X1	10	0	076	18.55
4202-237SR	2X1-1/2X1/2	10	0	076	26.18
4202-247SR	2X1/2	10	0	076	26.18
4202-287SR	2-1/2X1/2	10	0	076	35.88

**Sprinkler Head Tee - Special Reinforced Plastic Thread Style**



**Socket x SR Fipt x Socket - Stainless Steel Collar**

NSF® Certified Lead-Free

4203-122SR	1X1/2X1	50	0	076	9.09
------------	---------	----	---	-----	------

**Sprinkler Head 90° Ell - Special Reinforced Plastic Thread Style**



**Socket x SR Fipt - Stainless Steel Collar**

NSF® Certified Lead-Free

4207-101SR	3/4X1/2	20	180	076	5.16
4207-130SR	1X1/2	10	150	076	7.28
4207-131SR	1X3/4	50	0	076	8.80
4207-166SR	1-1/4X1/2	25	0	076	9.24