



Filters & Strainers Product
Irrigation & Hose Filters

Irrigation & Hose Filters



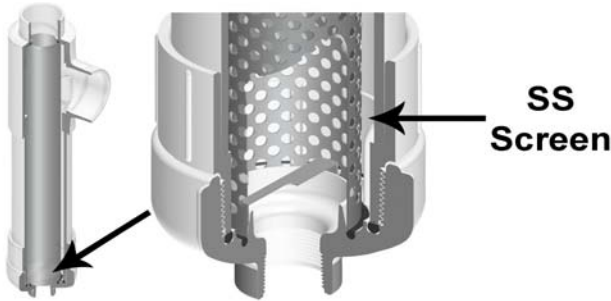
PRODUCT

Contact Spears® for any Information not found.

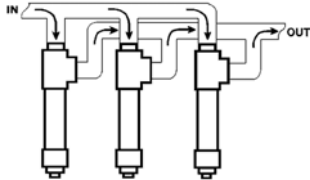


Filters

Specially designed for agricultural and irrigation applications. Suitable for any application where cool, filtered water is required. Standard units utilize an internal-to-external filter cartridge.



- 200 psi Working Pressure Non-Shock @ 73°F (23°C)
- Filter Body is made from NSF®-PW Approved PVC Material
- Optional Screen Meshes
- Compact Design, Easy to Clean
- Lightweight, Easy to Install
- Filter Screens are designed using a standard perforated Stainless Steel Screen
- Mesh Sizes include an inner Stainless Steel Cloth with Spring Support (external cloth on reverse flow filters)
- Pressure loss: 100 GPM – 3 psi 50 GPM – 1.25 psi
- May be bushed to required pipe size (Bushings sold separately)



- When more than 100 gpm is required, filters may be installed in parallel
- When installing filter, allow space for removing filter screen for cleaning
- Remove stainless steel filter screen before solvent welding filter to pipe manifold
- When filters are installed in the direct sun, it is suggested the filter body be coated with a water-base latex paint having a high reflectance
- Installation in a shaded area is preferred

— CAUTION —

- WATER HAMMER MAY CAUSE SEVERE DAMAGE TO THE FILTER ASSEMBLY.
- BACK FLUSHING IS NOT RECOMMENDED.
- QUALITY GRADE THREAD SEALANT IS RECOMMENDED FOR ALL THREADED PVC CONNECTIONS.

Mesh Size	Hole Size (in.)	Part Number Extension
1/16" Holes	.0625	-16
1/32" Holes	.0312	-32
50 Mesh	.0117	-50
76 Mesh	.0095	-76
100 Mesh	.0059	-100
150 Mesh	.0041	-150
200 Mesh	.0029	-200

Additional Mesh Sizes available on request.

Filter Dimensions

Series	A Inlet		B Outlet	C Overall Length	Screen Length
	Socket	Spigot			
FLR	2-1/2	3	4	28	24
MFLR	2-1/2	3	4	16	12

Made in the U.S.A.

Suitable for Oil-Free air handling to 25 psi, not for distribution of compressed air or gas

Effective 06/26/2017 See MSRP-1 Sheet or Check Spears® On-line Catalog @ www.spearsmfg.com for Pricing

Irrigation Filter Assembly with Stainless Steel Screen

Part Number	Size	Std Pk	Mstr Ctn	Prod Code	MSRP
100 GPM					
FL-16 ¹	2-1/2 /3 x 4	1	0	020	615.08
FL-32 ¹	2-1/2 /3 x 4	1	0	020	629.06
FL-50	2-1/2 /3 x 4	1	0	020	712.91
FL-76	2-1/2 /3 x 4	1	0	020	861.09
FL-100	2-1/2 /3 x 4	1	0	020	782.80
FL-150	2-1/2 /3 x 4	1	0	020	810.79
FL-200	2-1/2 /3 x 4	1	0	020	880.67

¹ Standard FL-16 and FL-32 can be utilized as Reverse Flow Filters by reversing installation from current inlet to outlet and current outlet to inlet.

NOTE: Filter Assemblies are furnished standard with a 1-1/4" IPS tapped cap (FL-4A) for use with a valve, or may be plugged off (plug not furnished). Optional cap available with 1/4" IPS tapping for use with a pressure gauge — specify FL-5A when ordering.

Part Number	Size	Std Pk	Mstr Ctn	Prod Code	MSRP
50 GPM					
MFL-16 ¹	2-1/2 /3 x 2	1	0	020	517.25
MFL-32 ¹	2-1/2 /3 x 2	1	0	020	525.62
MFL-50	2-1/2 /3 x 2	1	0	020	542.36
MFL-76	2-1/2 /3 x 2	1	0	020	657.04
MFL-100	2-1/2 /3 x 2	1	0	020	573.15
MFL-150	2-1/2 /3 x 2	1	0	020	601.09
MFL-200	2-1/2 /3 x 2	1	0	020	670.99

¹ Standard MFL-16 and MFL-32 can be utilized as Reverse Flow Filters by reversing installation from current inlet to outlet and current outlet to inlet.

NOTE: Filter Assemblies are furnished standard with a 1-1/4" IPS tapped cap (FL4A) for use with a valve, or may be plugged off (plug not furnished). Optional cap available with 1/4" IPS tapping for use with a pressure gauge — specify FL-5A when ordering.

Irrigation Filter Replacement Screens

Part Number	Size	Std Pk	Mstr Ctn	Prod Code	MSRP
100 GPM (24" Length)					
FL-16-1	1/16" Holes	4	0	020	246.03
FL-32-1	1/32" Holes	4	0	020	268.39
FL-50-1	50 Mesh	4	0	020	383.12
FL-76-1	76 Mesh	4	0	020	383.12
FL-100-1	100 Mesh	4	0	020	413.80
FL-150-1	150 Mesh	4	0	020	447.33
FL-200-1	200 Mesh	4	0	020	553.57

NOTE: When ordering replacement screens for FL and MFL Series Filters, please provide exact length of old screen within 1/64" to ensure proper fit of new screen in your filter body.

Part Number	Size	Std Pk	Mstr Ctn	Prod Code	MSRP
50 GPM (12" Length)					
MFL-16-1	1/16" Holes	4	0	020	201.42
MFL-32-1	1/32" Holes	4	0	020	232.70
MFL-50-1	50 Mesh	4	0	020	279.59
MFL-76-1	76 Mesh	4	0	020	279.59
MFL-100-1	100 Mesh	4	0	020	307.56
MFL-150-1	150 Mesh	4	0	020	341.11
MFL-200-1	200 Mesh	4	0	020	419.35

NOTE: When ordering replacement screens for FL and MFL Series Filters, please provide exact length of old screen within 1/64" to ensure proper fit of new screen in your filter body.



Filters & Strainers Product Filters & Hose Filters

Filters

Irrigation Filter Replacement Components

Part Number	Size	Std Pk	Mstr Ctn	Prod Code	MSRP
-------------	------	--------	----------	-----------	------

100 GPM Filter Body

FL-11	2-1/2 /3 X 4	1	0	020	419.35
-------	--------------	---	---	-----	--------

50 GPM Filter Body

MFL-11	2-1/2 /3 X 2	1	0	020	321.52
--------	--------------	---	---	-----	--------

Irrigation Filter Components for Old-Style w/3" Bottom Cap

Part Number	Size	Std Pk	Mstr Ctn	Prod Code	MSRP
-------------	------	--------	----------	-----------	------

Filter Cap w/Gasket

FL-4A	3X1-1/4	70	0	020	34.96
-------	---------	----	---	-----	-------

FL-5A	3X1/4	70	0	020	34.96
-------	-------	----	---	-----	-------

Cap Gasket Only

FCG-5	3	2	0	020	3.01
-------	---	---	---	-----	------

Irrigation Filter Components - New Style Body w/4" Bottom Cap

Part Number	Size	Std Pk	Mstr Ctn	Prod Code	MSRP
-------------	------	--------	----------	-----------	------

Filter Cap w/O-rings

FL-4B	4X1-1/4	25	0	020	64.23
-------	---------	----	---	-----	-------

FL-5B	4X1/4	1	0	020	103.92
-------	-------	---	---	-----	--------

Includes Cap with Cap O-ring (1) and bottom Filter Bushing O-ring (1)

Irrigation Filter Components - New Style Body

Part Number	Size	Std Pk	Mstr Ctn	Prod Code	MSRP
-------------	------	--------	----------	-----------	------

Cap O-Ring Only

Pack of 50

BPB-242	---	1	10	891	11.88
---------	-----	---	----	-----	-------

Filter Bushing O-Rings

B-335-60	---	100	0	891	4.05
----------	-----	-----	---	-----	------

Each filter uses two (2) Filter Bushing O-rings for top and bottom screen seals

Hose Filters



7 GPM Steel

7 GPM Plastic/Nylon

NOTE: It is recommended to connect the inlet of the Hose Filter to the system with a swivel adapter such as Spears® AP Series, to facilitate servicing of the filter element (refer to Hose Fittings).

Mesh Size	Hole Size (in.)	Part Number Extension
20 Mesh	.0331	-20
30 Mesh	.0232	-30
50 Mesh	.0117	-50
80 Mesh	.0070	-80
100 Mesh	.0059	-100
150 Mesh	.0041	-150
200 Mesh	.0029	-200

Additional Mesh Sizes available on request. Example: HF-50 = 50 Mesh

Hose Filter Assembly - 7 GPM

Part Number	Size	Std Pk	Mstr Ctn	Prod Code	MSRP
-------------	------	--------	----------	-----------	------

with Stainless Steel Screen

HF-20	3/4	10	60	020	20.73
-------	-----	----	----	-----	-------

HF-30	3/4	10	60	020	20.73
-------	-----	----	----	-----	-------

HF-50	3/4	10	60	020	20.73
-------	-----	----	----	-----	-------

HF-80	3/4	10	60	020	20.73
-------	-----	----	----	-----	-------

HF-100	3/4	10	60	020	21.53
--------	-----	----	----	-----	-------

HF-150	3/4	10	60	020	21.80
--------	-----	----	----	-----	-------

HF-200	3/4	10	60	020	22.38
--------	-----	----	----	-----	-------

with Plastic/Nylon Screen

HF-150N	3/4	10	60	020	21.80
---------	-----	----	----	-----	-------

Hose Filter Replacement Screen

Part Number	Size	Std Pk	Mstr Ctn	Prod Code	MSRP
-------------	------	--------	----------	-----------	------

Stainless Steel Screen

HF-20-1W	5	25	150	020	7.58
----------	---	----	-----	-----	------

HF-30-1W	5	25	150	020	7.58
----------	---	----	-----	-----	------

HF-50-1W	5	25	150	020	7.58
----------	---	----	-----	-----	------

HF-80-1W	5	25	150	020	7.58
----------	---	----	-----	-----	------

HF-100-1W	5	25	150	020	11.20
-----------	---	----	-----	-----	-------

HF-150-1W	5	25	150	020	11.20
-----------	---	----	-----	-----	-------

HF-200-1W	5	25	150	020	11.20
-----------	---	----	-----	-----	-------

Plastic/Nylon Screen

HF-150-1NW	4-3/4	25	150	020	11.20
------------	-------	----	-----	-----	-------

Hose Filter Body Components - 7 GPM

Part Number	Size	Std Pk	Mstr Ctn	Prod Code	MSRP
-------------	------	--------	----------	-----------	------

Hose Filter Body w/o screen

HF	3/4	10	60	020	15.59
----	-----	----	----	-----	-------

Hose Washer

W-100	3/4	50	1500	020	.21
-------	-----	----	------	-----	-----

Screen Washer

S-W	---	600	0	891	.23
-----	-----	-----	---	-----	-----

In-line Tee Style Filters and Reverse In-line Tee Style Filters



In-line Tee Style Filters and Reverse In-line Tee Style Filters

100 GPM and 50 GPM • PVC White • Buna O-ring Seal



100 GPM



50 GPM

- In-line Design Simplifies Installation.
- Allows Easy Parallel Filter Configuration for Increased Flow and Filtration.
- Removable Type 304 Stainless Steel Filter Cartridges in Assorted Perforations and Screen Mesh.
- Standard Flow Filter (Internal-to-External) Traps Sediment on Inside of Cartridge, Reverse Flow Filter (External-to-Internal) Traps Sediment on Outside of Cartridge.
- Convenient Bottom Drain with 1-1/4" NPT Stainless Steel Reinforced Plastic Thread and Plug. Optional Cap with 1/4" Outlet Available.
- 200 psi Working Pressure for Water @ 73°F (23°C).
- Manufactured from NSF® Certified PVC Material.

Mesh Size	Hole Size (in.)	Part Number Extension
1/16" Holes	.0625	-16
1/32" Holes	.0312	-32
50 Mesh	.0117	-50
76 Mesh	.0095	-76
100 Mesh	.0059	-100
150 Mesh	.0041	-150
200 Mesh	.0029	-200

Additional Mesh Sizes available on request.
Example: TF-50 = 50 Mesh

Irrigation Tee Filter - 100 GPM PVC White

Part Number	Size	Std Pk	Mstr Ctn	Prod Code	MSRP
-------------	------	--------	----------	-----------	------

Buna-N O-ring Seal with Stainless Steel Screen

TF-16*	2-1/2 /3 x 2-1/2 /3	1	0	020	615.08
TF-32*	2-1/2 /3 x 2-1/2 /3	1	0	020	629.06
TF-50	2-1/2 /3 x 2-1/2 /3	1	0	020	712.91
TF-76	2-1/2 /3 x 2-1/2 /3	1	0	020	861.09
TF-100	2-1/2 /3 x 2-1/2 /3	1	0	020	782.80
TF-150	2-1/2 /3 x 2-1/2 /3	1	0	020	810.79
TF-200	2-1/2 /3 x 2-1/2 /3	1	0	020	880.67

Irrigation Tee Filter - 50 GPM PVC White

Part Number	Size	Std Pk	Mstr Ctn	Prod Code	MSRP
-------------	------	--------	----------	-----------	------

Buna-N O-ring Seal with Stainless Steel Screen

MTF-16*	2-1/2 /3 x 2-1/2 /3	1	0	020	517.25
MTF-32*	2-1/2 /3 x 2-1/2 /3	1	0	020	525.62
MTF-50	2-1/2 /3 x 2-1/2 /3	1	0	020	542.36
MTF-76	2-1/2 /3 x 2-1/2 /3	1	0	020	657.04
MTF-100	2-1/2 /3 x 2-1/2 /3	1	0	020	573.15
MTF-150	2-1/2 /3 x 2-1/2 /3	1	0	020	601.09
MTF-200	2-1/2 /3 x 2-1/2 /3	1	0	020	670.99

Irrigation Reverse Flow Tee Filter - 100 GPM PVC White

Part Number	Size	Std Pk	Mstr Ctn	Prod Code	MSRP
-------------	------	--------	----------	-----------	------

Buna-N O-ring Seal with Stainless Steel Screen

TF-16*	2-1/2 /3 x 2-1/2 /3	1	0	020	615.08
TF-32*	2-1/2 /3 x 2-1/2 /3	1	0	020	629.06
TFR-50	2-1/2 /3 x 2-1/2 /3	1	0	020	712.91
TFR-76	2-1/2 /3 x 2-1/2 /3	1	0	020	712.91
TFR-100	2-1/2 /3 x 2-1/2 /3	1	0	020	782.80
TFR-150	2-1/2 /3 x 2-1/2 /3	1	0	020	810.79
TFR-200	2-1/2 /3 x 2-1/2 /3	1	0	020	880.67

Irrigation Reverse Flow Tee Filter - 50 GPM PVC White

Part Number	Size	Std Pk	Mstr Ctn	Prod Code	MSRP
-------------	------	--------	----------	-----------	------

Buna-N O-ring Seal with Stainless Steel Screen

MTF-16*	2-1/2 /3 x 2-1/2 /3	1	0	020	517.25
MTF-32*	2-1/2 /3 x 2-1/2 /3	1	0	020	525.62
MTFR-50	2-1/2 /3 x 2-1/2 /3	1	0	020	542.36
MTFR-76	2-1/2 /3 x 2-1/2 /3	1	0	020	542.36
MTFR-100	2-1/2 /3 x 2-1/2 /3	1	0	020	573.15
MTFR-150	2-1/2 /3 x 2-1/2 /3	1	0	020	601.09
MTFR-200	2-1/2 /3 x 2-1/2 /3	1	0	020	670.99

*Standard TF-16, TF-32, MTF-16 & MTF-32 can be utilized as Reverse Flow Filters by reversing installation from current inlet to outlet and current outlet to inlet.

Irrigation Reverse Flow Tee Filter - 100 GPM Replacement Screens for TF Filters (24" Length)

Part Number	Size	Std Pk	Mstr Ctn	Prod Code	MSRP
FL-16-1	1/16" Holes	4	0	020	246.03
FL-32-1	1/32" Holes	4	0	020	268.39
FL-50-1	50 Mesh	4	0	020	383.12
FL-76-1	76 Mesh	4	0	020	383.12
FL-100-1	100 Mesh	4	0	020	413.80
FL-150-1	150 Mesh	4	0	020	447.33
FL-200-1	200 Mesh	4	0	020	553.57

NOTE: When ordering replacement screens for TF and MTF Series Filters, please provide exact length of old screen within 1/64" to insure proper fit of new screen in your filter body.

Irrigation Reverse Flow Tee Filter - 50 GPM Filter Replacement Screens for MTF Filters (12" Length)

Part Number	Size	Std Pk	Mstr Ctn	Prod Code	MSRP
MFL-16-1	1/16" Holes	4	0	020	201.42
MFL-32-1	1/32" Holes	4	0	020	232.70



In-line Tee Style Filters and Reverse In-line Tee Style Filters

Irrigation Reverse Flow Tee Filter - 50 GPM Filter Replacement Screens for MTF Filters (12" Length) (continued)

Part Number	Size	Std Pk	Mstr Ctn	Prod Code	MSRP
MFL-50-1	50 Mesh	4	0	020	279.59
MFL-76-1	76 Mesh	4	0	020	279.59
MFL-100-1	100 Mesh	4	0	020	307.56
MFL-150-1	150 Mesh	4	0	020	341.11
MFL-200-1	200 Mesh	4	0	020	419.35

NOTE: When ordering replacement screens for TF and MTF Series Filters, please provide exact length of old screen within 1/64" to insure proper fit of new screen in your filter body.

Irrigation Reverse Flow Tee Filter - 100 GPM Replacement Screens for TFR Filters(24" Length)

Part Number	Size	Std Pk	Mstr Ctn	Prod Code	MSRP
FL-16-1	1/16" Holes	4	0	020	246.03
FL-32-1	1/32" Holes	4	0	020	268.39
FLR-50-1	50 Mesh	4	0	020	383.12
FLR-76-1	76 Mesh	4	0	020	383.12
FLR-100-1	100 Mesh	4	0	020	413.80
FLR-150-1	150 Mesh	4	0	020	447.33
FLR-200-1	200 Mesh	4	0	020	553.57

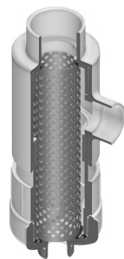
Irrigation Reverse Flow Tee Filter - 50 GPM Replacement Screens for MTFR Filters (12" Length)

Part Number	Size	Std Pk	Mstr Ctn	Prod Code	MSRP
MFL-16-1	1/16" Holes	4	0	020	201.42
MFL-32-1	1/32" Holes	4	0	020	232.70
MFLR-50-1	50 Mesh	4	0	020	279.59
MFLR-76-1	76 Mesh	4	0	020	279.59
MFLR-100-1	100 Mesh	4	0	020	307.56
MFLR-150-1	150 Mesh	4	0	020	341.11
MFLR-200-1	200 Mesh	4	0	020	419.35

Reverse Flow Filters



100 GPM



50 GPM

- Filter cartridge specially designed for external-to-internal filtration
- Traps sediment and debris on outside of filter (standard filters use internal-to-external flow)
- 100 GPM and 50 GPM styles available

Irrigation Reverse Flow Filter with Stainless Steel Screen - 100 GPM

Part Number	Size	Std Pk	Mstr Ctn	Prod Code	MSRP
-------------	------	--------	----------	-----------	------

Socket x Socket/Spigot

FLR-16 ¹	4X2-1/2 /3	1	0	020	615.08
FLR-32 ¹	4X2-1/2 /3	1	0	020	629.06
FLR-50	4X2-1/2 /3	1	0	020	712.91
FLR-76	4X2-1/2 /3	1	0	020	861.09
FLR-100	4X2-1/2 /3	1	0	020	782.80
FLR-150	4X2-1/2 /3	1	0	020	810.79
FLR-200	4X2-1/2 /3	1	0	020	880.67

¹ Standard FL-16 and FL-32 can be utilized as Reverse Flow Filters by reversing installation from current inlet to outlet and current outlet to inlet.

Irrigation Reverse Flow Filter with Stainless Steel Screen - 50 GPM

Part Number	Size	Std Pk	Mstr Ctn	Prod Code	MSRP
-------------	------	--------	----------	-----------	------

Socket x Socket/Spigot

MFLR-16 ¹	2X2-1/2 /3	1	0	020	517.25
MFLR-32 ¹	2X2-1/2 /3	1	0	020	525.62
MFLR-50	2X2-1/2 /3	1	0	020	542.36
MFLR-76	2X2-1/2 /3	1	0	020	657.04
MFLR-100	2X2-1/2 /3	1	0	020	573.15
MFLR-150	2X2-1/2 /3	1	0	020	601.09
MFLR-200	2X2-1/2 /3	1	0	020	670.99

¹ Standard MFL-16 and MFL-32 can be utilized as Reverse Flow Filters by reversing installation from current inlet to outlet and current outlet to inlet.

Irrigation Filter Reverse Flow SS Replacement Screens (24" Length)

Part Number	Size	Std Pk	Mstr Ctn	Prod Code	MSRP
-------------	------	--------	----------	-----------	------

100 GPM

FL-16-1	1/16" Holes	4	0	020	246.03
FL-32-1	1/32" Holes	4	0	020	268.39
FLR-50-1	50 Mesh	4	0	020	383.12
FLR-76-1	76 Mesh	4	0	020	383.12
FLR-100-1	100 Mesh	4	0	020	413.80
FLR-150-1	150 Mesh	4	0	020	447.33
FLR-200-1	200 Mesh	4	0	020	553.57

Irrigation Filter Reverse Flow SS Replacement Screens (12" Length)

Part Number	Size	Std Pk	Mstr Ctn	Prod Code	MSRP
-------------	------	--------	----------	-----------	------

50 GPM

MFL-16-1	1/16" Holes	4	0	020	201.42
MFL-32-1	1/32" Holes	4	0	020	232.70
MFLR-50-1	50 Mesh	4	0	020	279.59
MFLR-76-1	76 Mesh	4	0	020	279.59
MFLR-100-1	100 Mesh	4	0	020	307.56
MFLR-150-1	150 Mesh	4	0	020	341.11
MFLR-200-1	200 Mesh	4	0	020	419.35