



Schedule 40 Fittings Product

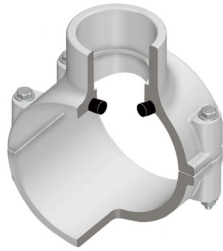
**Clamp-On Saddles**

**Clamp-On Saddles**

Part Number	Size	Hole Saw Dia	Std Pk	Mstr Ctn	Prod Code	MSRP
-------------	------	--------------	--------	----------	-----------	------

Clamp-On Saddle x Soc Single Outlet, PVC White

with Buna-N O-ring Seal & Zinc-Plated Hardware



2"- 4" 235, 6" 200, 8"-12" 150 psi @ 73°F (23°C)

466-247	2X1/2	3/4	1	10	046	29.93
466-248	2X3/4	7/8	1	10	046	29.93
466-249	2X1	1-1/8	1	10	046	29.93
466-250	2X1-1/4	1-1/2	1	10	046	29.93
466-251	2X1-1/2	1-1/2	1	10	046	29.93
466-291	2-1/2X1-1/2	1-3/4	1	10	046	40.60
466-333 <sup>1</sup>	3X1/2	7/8	1	10	046	40.60
466-334	3X3/4	7/8	1	10	046	40.60
466-335	3X1	1-1/8	1	10	046	40.60
466-336 <sup>1</sup>	3X1-1/4	2-1/4	1	10	046	40.60
466-337 <sup>1</sup>	3X1-1/2	2-1/4	1	10	046	40.60
466-338	3X2	2-1/4	1	10	046	40.60
466-415 <sup>1</sup>	4X1/2	1-1/8	1	10	046	52.02
466-416 <sup>1</sup>	4X3/4	1-1/8	1	10	046	52.02
466-417	4X1	1-1/8	1	8	046	52.02
466-418 <sup>1</sup>	4X1-1/4	1-3/4	1	8	046	52.02
466-419	4X1-1/2	1-3/4	1	8	046	52.02
466-420	4X2	2-1/4	1	8	046	52.02
466-421 <sup>1</sup>	4X2-1/2	3	1	4	046	58.86
466-422	4X3	3	1	4	046	64.65
466-523 <sup>1</sup>	6X1/2	1-1/8	1	4	046	89.51
466-524 <sup>1</sup>	6X3/4	1-1/8	1	4	046	89.51
466-525	6X1	1-1/8	1	4	046	89.51
466-526 <sup>1</sup>	6X1-1/4	2-1/4	1	4	046	89.51
466-527 <sup>1</sup>	6X1-1/2	2-1/4	1	4	046	89.51
466-528	6X2	2-1/4	1	4	046	89.51
466-529 <sup>1</sup>	6X2-1/2	3	1	4	046	98.40
466-530	6X3	3	1	4	046	102.53
466-532	6X4	4	1	4	046	107.94
466-573 <sup>1</sup>	8X1/2	4	1	0	046	139.16
466-574 <sup>1</sup>	8X3/4	4	1	0	046	139.16
466-575 <sup>1</sup>	8X1	4	1	0	046	139.16
466-576 <sup>1</sup>	8X1-1/4	4	1	0	046	139.16
466-577 <sup>1</sup>	8X1-1/2	4	1	0	046	139.16
466-578	8 X 2	4	1	0	046	139.16
466-579 <sup>1</sup>	8X2-1/2	4	1	0	046	153.01
466-580 <sup>1</sup>	8X3	4	1	0	046	162.25
466-582	8X4	4	1	0	046	171.82
466-585	8X6	6	1	0	046	190.82
466-620 <sup>1</sup>	10X1-1/2	4	1	0	046	227.07
466-624	10X4	4	1	0	046	227.07
466-626	10X6	6	1	0	046	261.09
466-660 <sup>1</sup>	12X1-1/2	4	1	0	046	284.64
466-664	12X4	4	1	0	046	284.64

Part Number	Size	Hole Saw Dia	Std Pk	Mstr Ctn	Prod Code	MSRP
-------------	------	--------------	--------	----------	-----------	------

Clamp-On Saddle x Soc Single Outlet, PVC White (continued)  
with Buna-N O-ring Seal & Zinc-Plated Hardware

466-666	12X6	6	1	0	046	330.08
---------	------	---	---	---	-----	--------

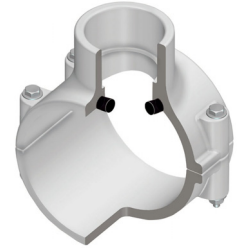
<sup>1</sup> Outlet-sized with Bushing

Clamp-On Saddle x Soc Single Outlet, PVC White

with Buna-N O-ring Seal & SS Hardware

2"- 4" 235, 6" 200, 8"-12" 150 psi @ 73°F (23°C)

466S-247	2X1/2	3/4	1	10	046	49.20
466S-248	2X3/4	7/8	1	10	046	49.20
466S-249	2X1	1-1/8	1	10	046	49.20
466S-250	2X1-1/4	1-1/2	1	10	046	49.20
466S-251	2X1-1/2	1-1/2	1	10	046	49.20
466S-291	2-1/2X1-1/2	1-3/4	1	10	046	66.19
466S-333 <sup>1</sup>	3X1/2	7/8	1	10	046	66.19
466S-334	3X3/4	7/8	1	10	046	66.19
466S-335	3X1	1-1/8	1	10	046	66.19
466S-336 <sup>1</sup>	3X1-1/4	2-1/4	1	10	046	66.19
466S-337 <sup>1</sup>	3X1-1/2	2-1/4	1	10	046	66.19
466S-338	3X2	2-1/4	1	10	046	66.19
466S-415 <sup>1</sup>	4X1/2	1-1/8	1	10	046	83.28
466S-416 <sup>1</sup>	4X3/4	1-1/8	1	10	046	83.28
466S-417	4X1	1-1/8	1	10	046	83.28
466S-418 <sup>1</sup>	4X1-1/4	1-3/4	1	8	046	83.28
466S-419	4X1-1/2	1-3/4	1	8	046	83.28
466S-420	4X2	2-1/4	1	8	046	83.28
466S-421 <sup>1</sup>	4X2-1/2	3	1	4	046	91.00
466S-422	4X3	3	1	4	046	94.66
466S-523 <sup>1</sup>	6X1/2	1-1/8	1	4	046	136.41
466S-524 <sup>1</sup>	6X3/4	1-1/8	1	4	046	136.41
466S-525	6X1	1-1/8	1	4	046	136.41
466S-526 <sup>1</sup>	6X1-1/4	2-1/4	1	4	046	136.41
466S-527 <sup>1</sup>	6X1-1/2	2-1/4	1	4	046	136.41
466S-528	6X2	2-1/4	1	4	046	136.41
466S-529 <sup>1</sup>	6X2-1/2	3	1	4	046	140.89
466S-530	6X3	3	1	4	046	143.80
466S-532	6X4	4	1	4	046	150.20
466S-573 <sup>1</sup>	8X1/2	4	1	0	046	199.16
466S-574 <sup>1</sup>	8X3/4	4	1	0	046	199.16
466S-575 <sup>1</sup>	8X1	4	1	0	046	199.16
466S-576 <sup>1</sup>	8X1-1/4	4	1	0	046	199.16
466S-577 <sup>1</sup>	8X1-1/2	4	1	0	046	199.16
466S-578	8 X 2	4	1	0	046	199.16
466S-579 <sup>1</sup>	8X2-1/2	4	1	0	046	219.08
466S-580 <sup>1</sup>	8X3	4	1	0	046	230.06
466S-582	8X4	4	1	0	046	243.93
466S-585	8X6	6	1	0	046	270.71
466S-620 <sup>1</sup>	10X1-1/2	4	1	0	046	322.13
466S-624	10X4	4	1	0	046	322.13
466S-626	10X6	6	1	0	046	370.46



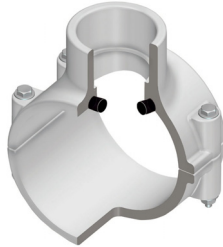
**Schedule 40 Fittings Product**  
**Clamp-On Saddles**



**Clamp-On Saddles**

Part Number	Size	Hole Saw Dia	Std Pk	Mstr Ctn	Prod Code	MSRP
<b>Clamp-On Saddle x Soc Single Outlet, PVC White (continued)</b> <b>with Buna-N O-ring Seal &amp; SS Hardware</b>						
466S-664	12X4	4	1	0	046	403.78
466S-666	12X6	6	1	0	046	468.41

<sup>1</sup> Outlet-sized with Bushing



**Clamp-On Saddle x Soc Single Outlet, PVC White**

**with EPDM O-ring Seal & Zinc-Plated Hardware**

2"- 4" 235, 6" 200, 8"-12" 150 psi @ 73°F (23°C)

466E-247	2X1/2	3/4	1	10	046	32.24
466E-248	2X3/4	7/8	1	10	046	32.24
466E-249	2X1	1-1/8	1	10	046	32.24
466E-250	2X1-1/4	1-1/2	1	10	046	32.24
466E-251	2X1-1/2	1-1/2	1	10	046	32.24
466E-291	2-1/2X1-1/2	1-3/4	1	10	046	41.66
466E-333 <sup>1</sup>	3X1/2	7/8	1	10	046	41.66
466E-334	3X3/4	7/8	1	10	046	41.66
466E-335	3X1	1-1/8	1	10	046	41.66
466E-336 <sup>1</sup>	3X1-1/4	2-1/4	1	10	046	41.66
466E-337 <sup>1</sup>	3X1-1/2	2-1/4	1	10	046	41.66
466E-338	3X2	2-1/4	1	10	046	41.66
466E-415 <sup>1</sup>	4X1/2	1-1/8	1	10	046	53.35
466E-416 <sup>1</sup>	4X3/4	1-1/8	1	10	046	53.35
466E-417	4X1	1-1/8	1	8	046	53.35
466E-418 <sup>1</sup>	4X1-1/4	1-3/4	1	8	046	53.35
466E-419	4X1-1/2	1-3/4	1	8	046	53.35
466E-420	4X2	2-1/4	1	8	046	53.35
466E-421 <sup>1</sup>	4X2-1/2	3	1	4	046	64.92
466E-422	4X3	3	1	4	046	72.62
466E-523 <sup>1</sup>	6X1/2	1-1/8	1	4	046	95.72
466E-524 <sup>1</sup>	6X3/4	1-1/8	1	4	046	95.72
466E-525	6X1	1-1/8	1	4	046	95.72
466E-526 <sup>1</sup>	6X1-1/4	2-1/4	1	4	046	95.72
466E-527 <sup>1</sup>	6X1-1/2	1-1/8	1	4	046	95.72
466E-528	6X2	2-1/4	1	4	046	95.72
466E-529 <sup>1</sup>	6X2-1/2	3	1	4	046	106.44
466E-530	6X3	3	1	4	046	112.44
466E-532	6X4	4	1	4	046	118.48
466E-573	8X1/2	4	1	0	046	147.13
466E-574	8X3/4	4	1	0	046	147.13
466E-575	8X1	4	1	0	046	147.13
466E-576 <sup>1</sup>	8X1-1/4	4	1	0	046	147.13
466E-577 <sup>1</sup>	8X1-1/2	4	1	0	046	147.13
466E-578	8 X 2	4	1	0	046	147.13
466E-579	8X2-1/2	4	1	0	046	161.88
466E-580 <sup>1</sup>	8X3	4	1	0	046	169.85
466E-582	8X4	4	1	0	046	180.18
466E-585	8X6	6	1	0	046	199.93

Made in the U.S.A.

Part Number	Size	Hole Saw Dia	Std Pk	Mstr Ctn	Prod Code	MSRP
<b>Clamp-On Saddle x Soc Single Outlet, PVC White (continued)</b> <b>with EPDM O-ring Seal &amp; Zinc-Plated Hardware</b>						
466E-624	10X4	4	1	0	046	237.92
466E-626	10X6	6	1	0	046	273.62
466E-664	12X4	4	1	0	046	298.22
466E-666	12X6	6	1	0	046	352.37

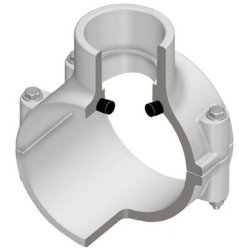
<sup>1</sup> Outlet-sized with Bushing

**Clamp-On Saddle x Soc Single Outlet, PVC White**

**with EPDM O-ring & Seal & SS Hardware**

2"- 4" 235, 6" 200, 8"-12" 150 psi @ 73°F (23°C)

466SE-247	2X1/2	3/4	1	10	046	50.75
466SE-248	2X3/4	7/8	1	10	046	50.75
466SE-249	2X1	1-1/8	1	10	046	50.75
466SE-250	2X1-1/4	1-1/2	1	10	046	50.75
466SE-251	2X1-1/2	1-1/2	1	10	046	50.75
466SE-291	2-1/2X1-1/2	1-3/4	1	10	046	68.25
466SE-333 <sup>1</sup>	3X1/2	7/8	1	10	046	68.25
466SE-334	3X3/4	7/8	1	10	046	68.25
466SE-335	3X1	1-1/8	1	10	046	68.25
466SE-336 <sup>1</sup>	3X1-1/4	2-1/4	1	10	046	68.25
466SE-337 <sup>1</sup>	3X1-1/2	2-1/4	1	10	046	68.25
466SE-338	3X2	2-1/4	1	10	046	68.25
466SE-415 <sup>1</sup>	4X1/2	1-1/8	1	10	046	84.26
466SE-416 <sup>1</sup>	4X3/4	1-1/8	1	10	046	84.26
466SE-417	4X1	1-1/8	1	8	046	84.26
466SE-418 <sup>1</sup>	4X1-1/4	1-3/4	1	8	046	84.26
466SE-419	4X1-1/2	1-3/4	1	8	046	84.26
466SE-420	4X2	2-1/4	1	8	046	84.26
466SE-421 <sup>1</sup>	4X2-1/2	3	1	4	046	91.12
466SE-422	4X3	3	1	4	046	100.94
466SE-523 <sup>1</sup>	6X1/2	1-1/8	1	4	046	143.37
466SE-524 <sup>1</sup>	6X3/4	1-1/8	1	4	046	143.37
466SE-525	6X1	1-1/8	1	4	046	143.37
466SE-526 <sup>1</sup>	6X1-1/4	2-1/4	1	4	046	143.37
466SE-527 <sup>1</sup>	6X1-1/2	2-1/4	1	4	046	143.37
466SE-528	6X2	2-1/4	1	4	046	143.37
466SE-529 <sup>1</sup>	6X2-1/2	3	1	4	046	150.59
466SE-530	6X3	3	1	4	046	155.33
466SE-532	6X4	4	1	4	046	162.91
466SE-573	8X1/2	4	1	0	046	208.25
466SE-574 <sup>1</sup>	8X3/4	4	1	0	046	208.25
466SE-575 <sup>1</sup>	8X1	4	1	0	046	208.25
466SE-576	8X1-1/4	4	1	0	046	208.25
466SE-577 <sup>1</sup>	8X1-1/2	4	1	0	046	208.25
466SE-578	8X2	4	1	0	046	208.25
466SE-579 <sup>1</sup>	8X2-1/2	4	1	0	046	229.06
466SE-580 <sup>1</sup>	8X3	4	1	0	046	240.47
466SE-582	8X4	4	1	0	046	254.85
466SE-585	8X6	6	1	0	046	282.93





**Schedule 40 Fittings Product**  
**Clamp-On Saddles**

**Clamp-On Saddles**

Part Number	Size	Hole Saw Dia	Std Pk	Mstr Ctn	Prod Code	MSRP
<b>Clamp-On Saddle x Soc Single Outlet, PVC White (continued)</b> <b>with EPDM O-ring &amp; Seal &amp; SS Hardware</b>						
466SE-624	10X4	4	1	0	046	336.61
466SE-626	10X6	6	1	0	046	387.12
466SE-664	12X4	4	1	0	046	421.89
466SE-666	12X6	4	1	0	046	489.43

<sup>1</sup> Outlet-sized with Bushing



**Clamp-On Saddle x SR Thread Single Outlet, PVC White**

**with Buna-N O-ring Seal & Zinc-Plated Hardware**

2"- 4" 235, 6" 200, 8"-12" 150 psi @ 73°F (23°C)

467-247SR	2X1/2	3/4	1	10	046	33.44
467-248SR	2X3/4	7/8	1	10	046	33.44
467-249SR	2X1	1-1/8	1	10	046	33.44
467-250SR	2X1-1/4	1-1/2	1	10	046	33.44
467-251SR	2X1-1/2	1-1/2	1	10	046	33.44
467-291SR	2-1/2X1-1/2	1-3/4	1	10	046	45.74
467-333SR <sup>1</sup>	3X1/2	7/8	1	10	046	45.74
467-334SR	3X3/4	7/8	1	10	046	45.74
467-335SR	3X1	1-1/8	1	10	046	45.74
467-336SR <sup>1</sup>	3X1-1/4	2-1/4	1	10	046	45.74
467-337SR <sup>1</sup>	3X1-1/2	2-1/4	1	10	046	45.74
467-338SR	3X2	2-1/4	1	10	046	45.74
467-415SR <sup>1</sup>	4X1/2	1-1/8	1	10	046	57.59
467-416SR <sup>1</sup>	4X3/4	1-1/8	1	10	046	57.59
467-417SR	4X1	1-1/8	1	8	046	57.59
467-418SR <sup>1</sup>	4X1-1/4	1-3/4	1	8	046	57.59
467-419SR	4X1-1/2	1-3/4	1	8	046	57.59
467-420SR	4X2	2-1/4	1	8	046	57.59
467-421SR <sup>1</sup>	4X2-1/2	3	1	4	046	62.29
467-422SR	4X3	3	1	4	046	67.93
467-523SR <sup>1</sup>	6X1/2	1-1/8	1	4	046	100.57
467-524SR <sup>1</sup>	6X3/4	1-1/8	1	4	046	100.57
467-525SR	6X1	1-1/8	1	4	046	100.57
467-526SR <sup>1</sup>	6X1-1/4	2-1/4	1	4	046	100.57
467-527SR <sup>1</sup>	6X1-1/2	2-1/4	1	4	046	100.57
467-528SR	6X2	2-1/4	1	4	046	100.57
467-529SR <sup>1</sup>	6X2-1/2	3	1	4	046	118.67
467-530SR	6X3	3	1	4	046	126.26
467-532SR	6X4	4	1	4	046	131.44
467-573SR <sup>1</sup>	8X1/2	4	1	0	046	153.27
467-574SR <sup>1</sup>	8X3/4	4	1	0	046	153.27
467-575SR <sup>1</sup>	8X1	4	1	0	046	153.27
467-576SR <sup>1</sup>	8X1-1/4	4	1	0	046	153.27
467-577SR <sup>1</sup>	8X1-1/2	4	1	0	046	153.27
467-578SR <sup>1</sup>	8X2	4	1	0	046	153.27
467-579SR <sup>1</sup>	8X2-1/2	4	1	0	046	168.57
467-580SR <sup>1</sup>	8X3	4	1	0	046	177.08

Part Number	Size	Hole Saw Dia	Std Pk	Mstr Ctn	Prod Code	MSRP
<b>Clamp-On Saddle x SR Thread Single Outlet, PVC White</b> <b>(continued)</b> <b>with Buna-N O-ring Seal &amp; Zinc-Plated Hardware</b>						
467-582SR	8X4	4	1	0	046	187.67
467-585SR	8X6	6	1	0	046	206.44
467-624SR	10X4	4	1	0	046	245.74
467-626SR	10X6	6	1	0	046	282.45
467-664SR	12X4	4	1	0	046	307.82
467-666SR	12X6	6	1	0	046	357.05

<sup>1</sup> Outlet-sized with Bushing

**Clamp-On Saddle x SR Thread Single Outlet, PVC White**

**with Buna-N O-ring Seal & SS Hardware**

2"- 4" 235, 6" 200, 8"-12" 150 psi @ 73°F (23°C)

467S-247SR	2X1/2	3/4	1	10	046	54.69
467S-248SR	2X3/4	7/8	1	10	046	54.69
467S-249SR	2X1	1-1/8	1	10	046	54.69
467S-250SR	2X1-1/4	1-1/2	1	10	046	54.69
467S-251SR	2X1-1/2	1-1/2	1	10	046	54.69
467S-291SR	2-1/2X1-1/2	1-3/4	1	10	046	73.55
467S-333SR <sup>1</sup>	3X1/2	7/8	1	10	046	73.55
467S-334SR	3X3/4	7/8	1	10	046	73.55
467S-335SR	3X1	1-1/8	1	10	046	73.55
467S-336SR <sup>1</sup>	3X1-1/4	2-1/4	1	10	046	73.55
467S-337SR <sup>1</sup>	3X1-1/2	2-1/4	1	10	046	73.55
467S-338SR	3X2	2-1/4	1	10	046	73.55
467S-415SR <sup>1</sup>	4X1/2	1-1/8	1	10	046	92.54
467S-416SR <sup>1</sup>	4X3/4	1-1/8	1	10	046	92.54
467S-417SR	4X1	1-1/8	1	8	046	92.54
467S-418SR <sup>1</sup>	4X1-1/4	1-3/4	1	8	046	92.54
467S-419SR	4X1-1/2	1-3/4	1	8	046	92.54
467S-420SR	4X2	2-1/4	1	8	046	92.54
467S-421SR <sup>1</sup>	4X2-1/2	3	1	4	046	98.40
467S-422SR	4X3	3	1	4	046	103.93
467S-523SR <sup>1</sup>	6X1/2	1-1/8	1	4	046	154.20
467S-524SR <sup>1</sup>	6X3/4	1-1/8	1	4	046	154.20
467S-525SR	6X1	1-1/8	1	4	046	154.20
467S-526SR <sup>1</sup>	6X1-1/4	2-1/4	1	4	046	154.20
467S-527SR <sup>1</sup>	6X1-1/2	2-1/4	1	4	046	154.20
467S-528SR	6X2	2-1/4	1	4	046	154.20
467S-529SR <sup>1</sup>	6X2-1/2	3	1	4	046	165.95
467S-530SR	6X3	3	1	4	046	170.80
467S-532SR	6X4	4	1	4	046	177.42
467S-573SR <sup>1</sup>	8X1/2	4	1	0	046	222.08
467S-574SR <sup>1</sup>	8X3/4	4	1	0	046	222.08
467S-575SR <sup>1</sup>	8X1	4	1	0	046	222.08
467S-576SR <sup>1</sup>	8X1-1/4	4	1	0	046	222.08
467S-577SR <sup>1</sup>	8X1-1/2	4	1	0	046	222.08
467S-578SR <sup>1</sup>	8X2	4	1	0	046	222.08
467S-579SR <sup>1</sup>	8X2-1/2	4	1	0	046	241.19





**Schedule 40 Fittings Product**  
**Clamp-On Saddles**



**Clamp-On Saddles**

Part Number	Size	Hole Saw Dia	Std Pk	Mstr Ctn	Prod Code	MSRP
-------------	------	--------------	--------	----------	-----------	------

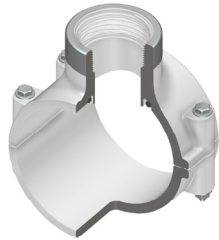
**Clamp-On Saddle x SR Thread Single Outlet, PVC White**

(continued)

**with Buna-N O-ring Seal & SS Hardware**

467S-580SR <sup>1</sup>	<b>8X3</b>	4	1	0	046	253.22
467S-582SR	<b>8X4</b>	4	1	0	046	268.44
467S-585SR	<b>8X6</b>	6	1	0	046	295.14
467S-624SR	<b>10X4</b>	4	1	0	046	351.28
467S-626SR	<b>10X6</b>	6	1	0	046	403.96
467S-664SR	<b>12X4</b>	4	1	0	046	440.35
467S-666SR	<b>12X6</b>	6	1	0	046	510.61

<sup>1</sup> Outlet-sized with Bushing



**Clamp-On Saddle x SR Thread Single Outlet, PVC White**

**with EPDM O-ring Seal & Zinc-Plated Hardware**

2"- 4" 235, 6" 200, 8"-12" 150 psi @ 73°F (23°C)

467E-247SR	<b>2X1/2</b>	3/4	1	10	046	35.99
467E-248SR	<b>2X3/4</b>	7/8	1	10	046	35.99
467E-249SR	<b>2X1</b>	1-1/8	1	10	046	35.99
467E-250SR	<b>2X1-1/4</b>	1-1/2	1	10	046	35.99
467E-251SR	<b>2X1-1/2</b>	1-1/2	1	10	046	35.99
467E-291SR	<b>2-1/2X1-1/2</b>	1-3/4	1	10	046	50.18
467E-333SR <sup>1</sup>	<b>3X1/2</b>	7/8	1	10	046	50.18
467E-334SR	<b>3X3/4</b>	7/8	1	10	046	50.18
467E-335SR	<b>3X1</b>	1-1/8	1	10	046	50.18
467E-336SR <sup>1</sup>	<b>3X1-1/4</b>	2-1/4	1	10	046	50.18
467E-337SR <sup>1</sup>	<b>3X1-1/2</b>	2-1/4	1	10	046	50.18
467E-338SR	<b>3X2</b>	2-1/4	1	10	046	50.18
467E-415SR <sup>1</sup>	<b>4X1/2</b>	1-1/8	1	10	046	62.74
467E-416SR <sup>1</sup>	<b>4X3/4</b>	1-1/8	1	10	046	62.74
467E-417SR	<b>4X1</b>	1-1/8	1	8	046	62.74
467E-418SR <sup>1</sup>	<b>4X1-1/4</b>	1-3/4	1	8	046	62.74
467E-419SR	<b>4X1-1/2</b>	1-3/4	1	8	046	62.74
467E-420SR	<b>4X2</b>	2-1/4	1	8	046	62.74
467E-421SR <sup>1</sup>	<b>4X2-1/2</b>	3	1	4	046	67.23
467E-422SR	<b>4X3</b>	3	1	4	046	72.07
467E-523SR <sup>1</sup>	<b>6X1/2</b>	1-1/8	1	4	046	104.68
467E-524SR <sup>1</sup>	<b>6X3/4</b>	1-1/8	1	4	046	104.68
467E-525SR	<b>6X1</b>	1-1/8	1	4	046	104.68
467E-526SR <sup>1</sup>	<b>6X1-1/4</b>	2-1/4	1	4	046	104.68
467E-527SR <sup>1</sup>	<b>6X1-1/2</b>	2-1/4	1	4	046	104.68
467E-528SR	<b>6X2</b>	2-1/4	1	4	046	104.68
467E-529SR <sup>1</sup>	<b>6X2-1/2</b>	3	1	4	046	129.67
467E-530SR	<b>6X3</b>	3	1	4	046	136.42
467E-532SR	<b>6X4</b>	4	1	4	046	143.29
467E-573SR <sup>1</sup>	<b>8X1/2</b>	4	1	0	046	158.60
467E-574SR <sup>1</sup>	<b>8X3/4</b>	4	1	0	046	158.60
467E-575SR <sup>1</sup>	<b>8X1</b>	4	1	0	046	158.60
467E-576SR <sup>1</sup>	<b>8X1-1/4</b>	4	1	0	046	158.60

Made in the U.S.A.

Part Number	Size	Hole Saw Dia	Std Pk	Mstr Ctn	Prod Code	MSRP
-------------	------	--------------	--------	----------	-----------	------

**Clamp-On Saddle x SR Thread Single Outlet, PVC White**

(continued)

**with EPDM O-ring Seal & Zinc-Plated Hardware**

467E-577SR <sup>1</sup>	<b>8X1-1/2</b>	4	1	0	046	158.60
467E-578SR <sup>1</sup>	<b>8X2</b>	4	1	0	046	158.60
467E-579SR <sup>1</sup>	<b>8X2-1/2</b>	4	1	0	046	174.46
467E-580SR <sup>1</sup>	<b>8X3</b>	4	1	0	046	183.23
467E-582SR	<b>8X4</b>	4	1	0	046	194.22
467E-585SR	<b>8X6</b>	6	1	0	046	215.46
467E-624SR	<b>10X4</b>	4	1	0	046	256.39
467E-626SR	<b>10X6</b>	6	1	0	046	294.79
467E-664SR	<b>12X4</b>	4	1	0	046	321.40
467E-666SR	<b>12X6</b>	6	1	0	046	372.83

<sup>1</sup> Outlet-sized with Bushing



**Clamp-On Saddle x SR Thread Single Outlet, PVC White**

**with EPDM O-ring Seal & SS Hardware**

2"- 4" 235, 6" 200, 8"-12" 150 psi @ 73°F (23°C)

467SE-247SR	<b>2X1/2</b>	3/4	1	10	046	56.34
467SE-248SR	<b>2X3/4</b>	7/8	1	10	046	56.34
467SE-249SR	<b>2X1</b>	1-1/8	1	10	046	56.34
467SE-250SR	<b>2X1-1/4</b>	1-1/2	1	10	046	56.34
467SE-251SR	<b>2X1-1/2</b>	1-1/2	1	10	046	56.34
467SE-291SR	<b>2-1/2X1-1/2</b>	1-3/4	1	10	046	75.60
467SE-333SR <sup>1</sup>	<b>3X1/2</b>	7/8	1	10	046	75.60
467SE-334SR	<b>3X3/4</b>	7/8	1	10	046	75.60
467SE-335SR	<b>3X1</b>	1-1/8	1	10	046	75.60
467SE-336SR <sup>1</sup>	<b>3X1-1/4</b>	2-1/4	1	10	046	75.60
467SE-337SR <sup>1</sup>	<b>3X1-1/2</b>	2-1/4	1	10	046	75.60
467SE-338SR	<b>3X2</b>	2-1/4	1	10	046	75.60
467SE-415SR <sup>1</sup>	<b>4X1/2</b>	1-1/8	1	10	046	94.86
467SE-416SR <sup>1</sup>	<b>4X3/4</b>	1-1/8	1	10	046	94.86
467SE-417SR	<b>4X1</b>	1-1/8	1	8	046	94.86
467SE-418SR <sup>1</sup>	<b>4X1-1/4</b>	1-3/4	1	8	046	94.86
467SE-419SR	<b>4X1-1/2</b>	1-3/4	1	8	046	94.86
467SE-420SR	<b>4X2</b>	2-1/4	1	8	046	94.86
467SE-421SR <sup>1</sup>	<b>4X2-1/2</b>	3	1	4	046	98.91
467SE-422SR	<b>4X3</b>	3	1	4	046	104.40
467SE-523SR <sup>1</sup>	<b>6X1/2</b>	1-1/8	1	4	046	159.40
467SE-524SR <sup>1</sup>	<b>6X3/4</b>	1-1/8	1	4	046	159.40
467SE-525SR	<b>6X1</b>	1-1/8	1	4	046	159.40
467SE-526SR <sup>1</sup>	<b>6X1-1/4</b>	2-1/4	1	4	046	159.40
467SE-527SR <sup>1</sup>	<b>6X1-1/2</b>	2-1/4	1	4	046	159.40
467SE-528SR	<b>6X2</b>	2-1/4	1	4	046	159.40
467SE-529SR <sup>1</sup>	<b>6X2-1/2</b>	3	1	4	046	173.02
467SE-530SR	<b>6X3</b>	3	1	4	046	179.48
467SE-532SR	<b>6X4</b>	4	1	4	046	182.72
467SE-573SR <sup>1</sup>	<b>8X1/2</b>	4	1	0	046	228.68
467SE-574SR <sup>1</sup>	<b>8X3/4</b>	4	1	0	046	228.68
467SE-575SR <sup>1</sup>	<b>8X1</b>	4	1	0	046	228.68

Suitable for Oil-Free air handling to 25 psi, not for distribution of compressed air or gas  
See MSRP-1 Sheet or Check Spears® On-line Catalog @ [www.spearsmfg.com](http://www.spearsmfg.com) for Pricing



Schedule 40 Fittings Product

**Clamp-On Saddles**

**Clamp-On Saddles**

Part Number	Size	Hole Saw Dia	Std Pk	Mstr Ctn	Prod Code	MSRP
<b>Clamp-On Saddle x SR Thread Single Outlet, PVC White</b> (continued) <b>with EPDM O-ring Seal &amp; SS Hardware</b>						
467SE-576SR <sup>1</sup>	8X1-1/4	4	1	0	046	228.68
467SE-577SR <sup>1</sup>	8X1-1/2	4	1	0	046	228.68
467SE-578SR <sup>1</sup>	8X2	4	1	0	046	228.68
467SE-579SR <sup>1</sup>	8X2-1/2	4	1	0	046	251.67
467SE-580SR <sup>1</sup>	8X3	4	1	0	046	264.19
467SE-582SR	8X4	4	1	0	046	280.13
467SE-585SR	8X6	6	1	0	046	308.08
467SE-624SR	10X4	4	1	0	046	366.49
467SE-626SR	10X6	6	1	0	046	421.73
467SE-666SR	12X6	6	1	0	046	533.07

<sup>1</sup> Outlet-sized with Bushing



**Clamp-On Saddle x Soc Double Outlet, PVC White**

**with Buna-N O-ring Seal & Zinc-Plated Hardware**

2"- 4" 235, 6" 200, 8"-12" 150 psi @ 73°F (23°C)

468-247	2X1/2	3/4	1	10	046	36.15
468-248	2X3/4	7/8	1	10	046	36.15
468-249	2X1	1-1/8	1	10	046	36.15
468-250	2X1-1/4	1-1/2	1	10	046	36.15
468-251	2X1-1/2	1-1/2	1	10	046	36.15
468-291	2-1/2X1-1/2	1-3/4	1	10	046	48.25
468-333 <sup>1</sup>	3X1/2	7/8	1	10	046	48.25
468-334	3X3/4	7/8	1	10	046	48.25
468-335	3X1	1-1/8	1	10	046	48.25
468-336 <sup>1</sup>	3X1-1/4	2-1/4	1	10	046	48.25
468-337 <sup>1</sup>	3X1-1/2	2-1/4	1	10	046	48.25
468-338	3X2	2-1/4	1	10	046	48.25
468-415 <sup>1</sup>	4X1/2	1-1/8	1	10	046	61.14
468-416 <sup>1</sup>	4X3/4	1-1/8	1	10	046	61.14
468-417	4X1	1-1/8	1	8	046	61.14
468-418 <sup>1</sup>	4X1-1/4	1-3/4	1	8	046	61.14
468-419	4X1-1/2	1-3/4	1	8	046	61.14
468-420	4X2	2-1/4	1	8	046	61.14
468-421 <sup>1</sup>	4X2-1/2	3	1	4	046	64.00
468-422	4X3	3	1	4	046	72.25
468-523 <sup>1</sup>	6X1/2	1-1/8	1	4	046	100.67
468-524 <sup>1</sup>	6X3/4	1-1/8	1	4	046	100.67
468-525	6X1	1-1/8	1	4	046	100.67
468-526 <sup>1</sup>	6X1-1/4	2-1/4	1	4	046	100.67
468-527 <sup>1</sup>	6X1-1/2	2-1/4	1	4	046	100.67
468-528	6X2	2-1/4	1	4	046	100.67
468-529 <sup>1</sup>	6X2-1/2	3	1	4	046	114.58
468-530	6X3	3	1	4	046	119.79
468-532	6X4	4	1	4	046	128.77
468-573 <sup>1</sup>	8X1/2	4	1	0	046	144.49

Part Number	Size	Hole Saw Dia	Std Pk	Mstr Ctn	Prod Code	MSRP
<b>Clamp-On Saddle x Soc Double Outlet, PVC White</b> (continued) <b>with Buna-N O-ring Seal &amp; Zinc-Plated Hardware</b>						
468-574 <sup>1</sup>	8X3/4	4	1	0	046	144.49
468-575 <sup>1</sup>	8X1	4	1	0	046	144.49
468-576 <sup>1</sup>	8X1-1/4	4	1	0	046	144.49
468-577 <sup>1</sup>	8X1-1/2	4	1	0	046	144.49
468-578 <sup>1</sup>	8X2	4	1	0	046	144.49
468-579 <sup>1</sup>	8X2-1/2	4	1	0	046	158.88
468-580 <sup>1</sup>	8X3	4	1	0	046	166.87
468-582	8X4	4	1	0	046	176.92
468-585	8X6	6	1	0	046	196.27
468-624	10X4	4	1	0	046	233.57
468-626	10X6	6	1	0	046	268.52
468-664	12X4	4	1	0	046	292.79
468-666	12X6	6	1	0	046	339.67

<sup>1</sup> Outlet-sized with Bushing



**Clamp-On Saddle x Soc Double Outlet, PVC White**

**with Buna-N O-ring Seal & SS Hardware**

2"- 4" 235, 6" 200, 8"-12" 150 psi @ 73°F (23°C)

468S-247	2X1/2	3/4	1	10	046	58.01
468S-248	2X3/4	7/8	1	10	046	58.01
468S-249	2X1	1-1/8	1	10	046	58.01
468S-250	2X1-1/4	1-1/2	1	10	046	58.01
468S-251	2X1-1/2	1-1/2	1	10	046	58.01
468S-291	2-1/2X1-1/2	1-3/4	1	10	046	77.44
468S-333 <sup>1</sup>	3X1/2	7/8	1	10	046	77.44
468S-334	3X3/4	7/8	1	10	046	77.44
468S-335	3X1	1-1/8	1	10	046	77.44
468S-336 <sup>1</sup>	3X1-1/4	2-1/4	1	10	046	77.44
468S-337 <sup>1</sup>	3X1-1/2	2-1/4	1	10	046	77.44
468S-338	3X2	2-1/4	1	10	046	77.44
468S-415 <sup>1</sup>	4X1/2	1-1/8	1	10	046	96.65
468S-416 <sup>1</sup>	4X3/4	1-1/8	1	10	046	96.65
468S-417	4X1	1-1/8	1	8	046	96.65
468S-418 <sup>1</sup>	4X1-1/4	1-3/4	1	8	046	96.65
468S-419	4X1-1/2	1-3/4	1	8	046	96.65
468S-420	4X2	2-1/4	1	8	046	96.65
468S-421 <sup>1</sup>	4X2-1/2	3	1	4	046	101.57
468S-422	4X3	3	1	4	046	111.45
468S-523 <sup>1</sup>	6X1/2	1-1/8	1	4	046	159.65
468S-524 <sup>1</sup>	6X3/4	1-1/8	1	4	046	159.65
468S-525	6X1	1-1/8	1	4	046	159.65
468S-526 <sup>1</sup>	6X1-1/4	2-1/4	1	4	046	159.65
468S-527 <sup>1</sup>	6X1-1/2	2-1/4	1	4	046	159.65
468S-528	6X2	2-1/4	1	4	046	159.65
468S-529 <sup>1</sup>	6X2-1/2	3	1	4	046	166.81
468S-530	6X3	3	1	4	046	169.68
468S-532	6X4	4	1	4	046	175.19
468S-573 <sup>1</sup>	8X1/2	4	1	0	046	214.76

**Schedule 40 Fittings Product**  
**Clamp-On Saddles**



**Clamp-On Saddles**

Part Number	Size	Hole Saw Dia	Std Pk	Mstr Ctn	Prod Code	MSRP
<b>Clamp-On Saddle x Soc Double Outlet, PVC White (continued)</b> <b>with Buna-N O-ring Seal &amp; SS Hardware</b>						
468S-574 <sup>1</sup>	8X3/4	4	1	0	046	214.76
468S-575 <sup>1</sup>	8X1	4	1	0	046	214.76
468S-576 <sup>1</sup>	8X1-1/4	4	1	0	046	214.76
468S-577 <sup>1</sup>	8X1-1/2	4	1	0	046	214.76
468S-578 <sup>1</sup>	8X2	4	1	0	046	214.76
468S-579 <sup>1</sup>	8X2-1/2	4	1	0	046	236.20
468S-580 <sup>1</sup>	8X3	4	1	0	046	248.16
468S-582	8X4	4	1	0	046	262.92
468S-585	8X6	6	1	0	046	289.17
468S-624	10X4	4	1	0	046	344.02
468S-626	10X6	6	1	0	046	395.73
468S-664	12X4	4	1	0	046	431.33
468S-666	12X6	6	1	0	046	500.31

<sup>1</sup> Outlet-sized with Bushing.



**Clamp-On Saddle x Soc Double Outlet, PVC White**

**with EPDM O-ring Seal & Zinc-Plated Hardware**

2"- 4" 235, 6" 200, 8"-12" 150 psi @ 73°F (23°C)

468E-247	2X1/2	3/4	1	10	046	38.01
468E-248	2X3/4	7/8	1	10	046	38.01
468E-249	2X1	1-1/8	1	10	046	38.01
468E-250	2X1-1/4	1-1/2	1	10	046	38.01
468E-251	2X1-1/2	1-1/2	1	10	046	38.01
468E-291	2-1/2X1-1/2	1-3/4	1	10	046	52.49
468E-333 <sup>1</sup>	3X1/2	7/8	1	10	046	52.49
468E-334	3X3/4	7/8	1	10	046	52.49
468E-335	3X1	1-1/8	1	10	046	52.49
468E-336 <sup>1</sup>	3X1-1/4	2-1/4	1	10	046	52.49
468E-337 <sup>1</sup>	3X1-1/2	2-1/4	1	10	046	52.49
468E-338	3X2	2-1/4	1	10	046	52.49
468E-415 <sup>1</sup>	4X1/2	1-1/8	1	10	046	63.83
468E-416 <sup>1</sup>	4X3/4	1-1/8	1	10	046	63.83
468E-417	4X1	1-1/8	1	8	046	63.83
468E-418 <sup>1</sup>	4X1-1/4	1-3/4	1	8	046	63.83
468E-419	4X1-1/2	1-3/4	1	8	046	63.83
468E-420	4X2	2-1/4	1	8	046	63.83
468E-421 <sup>1</sup>	4X2-1/2	3	1	4	046	68.45
468E-422	4X3	3	4	0	046	76.28
468E-523 <sup>1</sup>	6X1/2	1-1/8	1	4	046	107.16
468E-524 <sup>1</sup>	6X3/4	1-1/8	1	4	046	107.16
468E-525	6X1	1-1/8	1	4	046	107.16
468E-526 <sup>1</sup>	6X1-1/4	2-1/4	1	4	046	107.16
468E-527 <sup>1</sup>	6X1-1/2	2-1/4	1	4	046	107.16
468E-528	6X2	2-1/4	1	4	046	107.16
468E-529 <sup>1</sup>	6X2-1/2	3	1	4	046	119.84
468E-530	6X3	3	1	4	046	128.93

Made in the U.S.A.

Part Number	Size	Hole Saw Dia	Std Pk	Mstr Ctn	Prod Code	MSRP
<b>Clamp-On Saddle x Soc Double Outlet, PVC White (continued)</b> <b>with EPDM O-ring Seal &amp; Zinc-Plated Hardware</b>						
468E-532	6X4	4	1	4	046	135.84
468E-573 <sup>1</sup>	8X1/2	4	1	0	046	161.67
468E-574 <sup>1</sup>	8X3/4	4	1	0	046	161.67
468E-575 <sup>1</sup>	8X1	4	1	0	046	161.67
468E-576 <sup>1</sup>	8X1-1/4	4	1	0	046	161.67
468E-577 <sup>1</sup>	8X1-1/2	4	1	0	046	161.67
468E-578 <sup>1</sup>	8X2	4	1	0	046	161.67
468E-579 <sup>1</sup>	8X2-1/2	4	1	0	046	177.92
468E-580 <sup>1</sup>	8X3	4	1	0	046	186.87
468E-582	8X4	4	1	0	046	198.11
468E-585	8X6	6	1	0	046	217.84
468E-624	10X4	4	1	0	046	259.29
468E-626	10X6	6	1	0	046	298.05
468E-664	12X4	4	1	0	046	325.02
468E-666	12X6	6	1	0	046	376.89

<sup>1</sup> Outlet-sized with Bushing



**Clamp-On Saddle x Soc Double Outlet, PVC White**

**with EPDM O-ring Seal & SS Hardware**

2"- 4" 235, 6" 200, 8"-12" 150 psi @ 73°F (23°C)

468SE-247	2X1/2	3/4	1	10	046	62.03
468SE-248	2X3/4	7/8	1	10	046	62.03
468SE-249	2X1	1-1/8	1	10	046	62.03
468SE-250	2X1-1/4	1-1/2	1	10	046	62.03
468SE-251	2X1-1/2	1-1/2	1	10	046	62.03
468SE-291	2-1/2X1-1/2	1-3/4	1	10	046	82.03
468SE-333 <sup>1</sup>	3X1/2	7/8	1	10	046	82.03
468SE-334	3X3/4	7/8	1	10	046	82.03
468SE-335	3X1	1-1/8	1	10	046	82.03
468SE-336 <sup>1</sup>	3X1-1/4	2-1/4	1	10	046	82.03
468SE-337 <sup>1</sup>	3X1-1/2	2-1/4	1	10	046	82.03
468SE-338	3X2	2-1/4	1	10	046	82.03
468SE-415 <sup>1</sup>	4X1/2	1-1/8	1	10	046	102.39
468SE-416 <sup>1</sup>	4X3/4	1-1/8	1	10	046	102.39
468SE-417	4X1	1-1/8	1	8	046	102.39
468SE-418 <sup>1</sup>	4X1-1/4	1-3/4	1	8	046	102.39
468SE-419	4X1-1/2	1-3/4	1	8	046	102.39
468SE-420	4X2	2-1/4	1	8	046	102.39
468SE-421 <sup>1</sup>	4X2-1/2	3	1	4	046	111.77
468SE-422	4X3	3	4	0	046	119.14
468SE-523 <sup>1</sup>	6X1/2	1-1/8	1	4	046	170.68
468SE-524 <sup>1</sup>	6X3/4	1-1/8	1	4	046	170.68
468SE-525	6X1	1-1/8	1	4	046	170.68
468SE-526 <sup>1</sup>	6X1-1/4	2-1/4	1	4	046	170.68
468SE-527 <sup>1</sup>	6X1-1/2	2-1/4	1	4	046	170.68
468SE-528	6X2	2-1/4	1	4	046	170.68
468SE-529 <sup>1</sup>	6X2-1/2	3	1	4	046	175.29
468SE-530	6X3	3	1	4	046	181.38





**Schedule 40 Fittings Product**  
**Clamp-On Saddles**

**Clamp-On Saddles**

Part Number	Size	Hole Saw Dia	Std Pk	Mstr Ctn	Prod Code	MSRP
-------------	------	--------------	--------	----------	-----------	------

**Clamp-On Saddle x Soc Double Outlet, PVC White (continued)**  
**with EPDM O-ring Seal & SS Hardware**

468SE-532	6X4	4	1	4	046	191.83
468SE-573 <sup>1</sup>	8X1/2	4	1	0	046	243.17
468SE-574 <sup>1</sup>	8X3/4	4	1	0	046	243.17
468SE-575 <sup>1</sup>	8X1	4	1	0	046	243.17
468SE-576 <sup>1</sup>	8X1-1/4	4	1	0	046	243.17
468SE-577 <sup>1</sup>	8X1-1/2	4	1	0	046	243.17
468SE-578 <sup>1</sup>	8X2	4	1	0	046	243.17
468SE-579 <sup>1</sup>	8X2-1/2	4	1	0	046	267.54
468SE-580 <sup>1</sup>	8X3	4	1	0	046	276.67
468SE-582	8X4	4	1	0	046	298.12
468SE-585	8X6	6	1	0	046	330.45
468SE-624	10X4	4	1	0	046	393.20
468SE-626	10X6	6	1	0	046	452.12
468SE-664	12X4	4	1	0	046	493.06
468SE-666	12X6	6	1	0	046	571.82

<sup>1</sup> Outlet-sized with Bushing



**Clamp-On Saddle x SR Thread Double Outlet, PVC White**

**with Buna-N O-ring Seal & Zinc-Plated Hardware**

2"- 4" 235, 6" 200, 8"-12" 150 psi @ 73°F (23°C)

469-247SR	2X1/2	3/4	1	10	046	40.86
469-248SR	2X3/4	7/8	1	10	046	40.86
469-249SR	2X1	1-1/8	1	10	046	40.86
469-250SR	2X1-1/4	1-1/2	1	10	046	40.86
469-251SR	2X1-1/2	1-1/2	1	10	046	40.86
469-291SR	2-1/2X1-1/2	1-3/4	1	10	046	54.26
469-333SR <sup>1</sup>	3X1/2	7/8	1	10	046	54.26
469-334SR	3X3/4	7/8	1	10	046	54.26
469-335SR	3X1	1-1/8	1	10	046	54.26
469-336SR <sup>1</sup>	3X1-1/4	2-1/4	1	10	046	54.26
469-337SR <sup>1</sup>	3X1-1/2	2-1/4	1	10	046	54.26
469-338SR	3X2	2-1/4	1	10	046	54.26
469-415SR <sup>1</sup>	4X1/2	1-1/8	1	10	046	81.46
469-416SR <sup>1</sup>	4X3/4	1-1/8	1	10	046	81.46
469-417SR	4X1	1-1/8	1	8	046	81.46
469-418SR <sup>1</sup>	4X1-1/4	1-3/4	1	8	046	81.46
469-419SR	4X1-1/2	1-3/4	1	8	046	81.46
469-420SR	4X2	2-1/4	1	8	046	81.46
469-421SR <sup>1</sup>	4X2-1/2	3	1	4	046	87.52
469-422SR	4X3	3	1	4	046	208.79
469-523SR <sup>1</sup>	6X1/2	1-1/8	1	4	046	132.80
469-524SR <sup>1</sup>	6X3/4	1-1/8	1	4	046	132.80
469-525SR	6X1	1-1/8	1	4	046	132.80
469-526SR <sup>1</sup>	6X1-1/4	2-1/4	1	4	046	132.80
469-527SR <sup>1</sup>	6X1-1/2	2-1/4	1	4	046	132.80
469-528SR	6X2	2-1/4	1	4	046	132.80

Part Number	Size	Hole Saw Dia	Std Pk	Mstr Ctn	Prod Code	MSRP
-------------	------	--------------	--------	----------	-----------	------

**Clamp-On Saddle x SR Thread Double Outlet, PVC White**

(continued)

**with Buna-N O-ring Seal & Zinc-Plated Hardware**

469-529SR <sup>1</sup>	6X2-1/2	3	1	4	046	159.27
469-530SR	6X3	3	1	4	046	167.20
469-532SR	6X4	4	1	4	046	175.08
469-573SR <sup>1</sup>	8X1/2	4	1	0	046	194.65
469-574SR <sup>1</sup>	8X3/4	4	1	0	046	194.65
469-575SR <sup>1</sup>	8X1	4	1	0	046	194.65
469-576SR <sup>1</sup>	8X1-1/4	4	1	0	046	194.65
469-577SR <sup>1</sup>	8X1-1/2	4	1	0	046	194.65
469-578SR <sup>1</sup>	8X2	4	1	0	046	194.65
469-579SR <sup>1</sup>	8X2-1/2	4	1	0	046	215.46
469-580SR <sup>1</sup>	8X3	4	1	0	046	225.88
469-582SR	8X4	4	1	0	046	239.55
469-585SR	8X6	6	1	0	046	263.46
469-624SR	10X4	4	1	0	046	313.53
469-626SR	10X6	6	1	0	046	360.33
469-664SR	12X4		1	0	046	422.79
469-666SR	12X6	6	1	0	046	455.83

<sup>1</sup> Outlet-sized with Bushing



**Clamp-On Saddle x SR Thread Double Outlet, PVC White**

**with Buna-N O-ring Seal & SS Hardware**

2"- 4" 235, 6" 200, 8"-12" 150 psi @ 73°F (23°C)

469S-247SR	2X1/2	3/4	1	10	046	64.47
469S-248SR	2X3/4	7/8	1	10	046	64.47
469S-249SR	2X1	1-1/8	1	10	046	64.47
469S-250SR	2X1-1/4	1-1/2	1	10	046	64.47
469S-251SR	2X1-1/2	1-1/2	1	10	046	64.47
469S-291SR	2-1/2X1-1/2	1-3/4	1	10	046	86.03
469S-333SR <sup>1</sup>	3X1/2	7/8	1	10	046	86.03
469S-334SR	3X3/4	7/8	1	10	046	86.03
469S-335SR	3X1	1-1/8	1	10	046	86.03
469S-336SR <sup>1</sup>	3X1-1/4	2-1/4	1	10	046	86.03
469S-337SR <sup>1</sup>	3X1-1/2	2-1/4	1	10	046	86.03
469S-338SR	3X2	2-1/4	1	10	046	86.03
469S-415SR <sup>1</sup>	4X1/2	1-1/8	1	10	046	109.32
469S-416SR <sup>1</sup>	4X3/4	1-1/8	1	10	046	109.32
469S-417SR	4X1	1-1/8	1	8	046	109.32
469S-418SR <sup>1</sup>	4X1-1/4	1-3/4	1	8	046	109.32
469S-419SR	4X1-1/2	1-3/4	1	8	046	109.32
469S-420SR	4X2	2-1/4	1	8	046	109.32
469S-421SR <sup>1</sup>	4X2-1/2	3	1	4	046	115.32
469S-422SR	4X3	3	4	0	046	126.26
469S-523SR <sup>1</sup>	6X1/2	1-1/8	1	4	046	179.60
469S-524SR <sup>1</sup>	6X3/4	1-1/8	1	4	046	179.60
469S-525SR	6X1	1-1/8	1	4	046	179.60
469S-526SR <sup>1</sup>	6X1-1/4	2-1/4	1	4	046	179.60
469S-527SR <sup>1</sup>	6X1-1/2	2-1/4	1	4	046	179.60

**Schedule 40 Fittings Product**  
**Clamp-On Saddles**



**Clamp-On Saddles**

Part Number	Size	Hole Saw Dia	Std Pk	Mstr Ctn	Prod Code	MSRP
-------------	------	--------------	--------	----------	-----------	------

**Clamp-On Saddle x SR Thread Double Outlet, PVC White**

(continued)

**with Buna-N O-ring Seal & SS Hardware**

469S-528SR	6X2	2-1/4	1	4	046	179.60
469S-529SR <sup>1</sup>	6X2-1/2	3	1	4	046	188.00
469S-530SR	6X3	3	1	4	046	198.86
469S-532SR	6X4	4	1	4	046	207.65
469S-573SR <sup>1</sup>	8X1/2	4	1	0	046	254.68
469S-574SR <sup>1</sup>	8X3/4	4	1	0	046	254.68
469S-575SR <sup>1</sup>	8X1	4	1	0	046	254.68
469S-576SR <sup>1</sup>	8X1-1/4	4	1	0	046	254.68
469S-577SR <sup>1</sup>	8X1-1/2	4	1	0	046	254.68
469S-578SR <sup>1</sup>	8X2	4	1	0	046	254.68
469S-579SR <sup>1</sup>	8X2-1/2	4	1	0	046	280.13
469S-580SR <sup>1</sup>	8X3	4	1	0	046	294.05
469S-582SR	8X4	4	1	0	046	311.43
469S-585SR	8X6	6	1	0	046	345.84
469S-624SR	10X4	4	1	0	046	411.58
469S-626SR	10X6	6	1	0	046	473.31
469S-664SR	12X4	4	1	0	046	515.86
469S-666SR	12X6	6	1	0	046	598.26

<sup>1</sup> Outlet-sized with Bushing



**Clamp-On Saddle x SR Thread Double Outlet, PVC White**

**with EPDM O-ring Seal & Zinc-Plated Hardware**

2"- 4" 235, 6" 200, 8"-12" 150 psi @ 73°F (23°C)

469E-247SR	2X1/2	3/4	1	10	046	44.92
469E-248SR	2X3/4	7/8	1	10	046	44.92
469E-249SR	2X1	1-1/8	1	10	046	44.92
469E-250SR	2X1-1/4	1-1/2	1	10	046	44.92
469E-251SR	2X1-1/2	1-1/2	1	10	046	44.92
469E-291SR	2-1/2X1-1/2	1-3/4	1	10	046	60.91
469E-333SR <sup>1</sup>	3X1/2	7/8	1	10	046	60.91
469E-334SR	3X3/4	7/8	1	10	046	60.91
469E-335SR	3X1	1-1/8	1	10	046	60.91
469E-336SR <sup>1</sup>	3X1-1/4	2-1/4	1	10	046	60.91
469E-337SR <sup>1</sup>	3X1-1/2	2-1/4	1	10	046	60.91
469E-338SR	3X2	2-1/4	1	16	046	60.91
469E-415SR <sup>1</sup>	4X1/2	1-1/8	1	10	046	94.94
469E-416SR <sup>1</sup>	4X3/4	1-1/8	1	10	046	94.94
469E-417SR	4X1	1-1/8	1	8	046	94.94
469E-418SR <sup>1</sup>	4X1-1/4	1-3/4	1	8	046	94.94
469E-419SR	4X1-1/2	1-3/4	1	8	046	94.94
469E-420SR	4X2	2-1/4	1	8	046	94.94
469E-421SR <sup>1</sup>	4X2-1/2	3	1	4	046	96.82
469E-422SR	4X3	3	4	0	046	123.65
469E-523SR <sup>1</sup>	6X1/2	1-1/8	1	4	046	145.57
469E-524SR <sup>1</sup>	6X3/4	1-1/8	1	4	046	145.57

Made in the U.S.A.

Suitable for Oil-Free air handling to 25 psi, not for distribution of compressed air or gas  
See MSRP-1 Sheet or Check Spears® On-line Catalog @ [www.spearsmfg.com](http://www.spearsmfg.com) for Pricing

Part Number	Size	Hole Saw Dia	Std Pk	Mstr Ctn	Prod Code	MSRP
-------------	------	--------------	--------	----------	-----------	------

**Clamp-On Saddle x SR Thread Double Outlet, PVC White**

(continued)

**with EPDM O-ring Seal & Zinc-Plated Hardware**

469E-525SR	6X1	1-1/8	1	4	046	145.57
469E-526SR <sup>1</sup>	6X1-1/4	2-1/4	1	4	046	145.57
469E-527SR <sup>1</sup>	6X1-1/2	2-1/4	1	4	046	145.57
469E-528SR	6X2	2-1/4	1	4	046	145.57
469E-529SR <sup>1</sup>	6X2-1/2	3	1	4	046	162.93
469E-530SR	6X3	3	1	4	046	176.22
469E-532SR	6X4	4	1	4	046	187.39
469E-573SR <sup>1</sup>	8X1/2	4	1	0	046	210.94
469E-574SR <sup>1</sup>	8X3/4	4	1	0	046	210.94
469E-575SR <sup>1</sup>	8X1	4	1	0	046	210.94
469E-576SR <sup>1</sup>	8X1-1/4	4	1	0	046	210.94
469E-577SR <sup>1</sup>	8X1-1/2	4	1	0	046	210.94
469E-578SR	8X2	4	1	0	046	210.94
469E-579SR <sup>1</sup>	8X2-1/2	4	1	0	046	232.14
469E-580SR <sup>1</sup>	8X3	4	1	0	046	243.74
469E-582SR	8X4	4	1	0	046	258.40
469E-585SR	8X6	6	1	0	046	286.80
469E-624SR	10X4	4	1	0	046	341.31
469E-626SR	10X6	6	1	0	046	392.38
469E-666SR	12X6	6	1	0	046	496.33

<sup>1</sup> Outlet-sized with Bushing



**Clamp-On Saddle x SR Thread Double Outlet, PVC White**

**with EPDM O-ring Seal & SS Hardware**

2"- 4" 235, 6" 200, 8"-12" 150 psi @ 73°F (23°C)

469SE-247SR	2X1/2	3/4	1	10	046	68.60
469SE-248SR	2X3/4	7/8	1	10	046	68.60
469SE-249SR	2X1	1-1/8	1	10	046	68.60
469SE-250SR	2X1-1/4	1-1/2	1	10	046	68.60
469SE-251SR	2X1-1/2	1-1/2	1	10	046	68.60
469SE-291SR	2-1/2X1-1/2	1-3/4	1	10	046	91.37
469SE-333SR <sup>1</sup>	3X1/2	7/8	1	10	046	91.37
469SE-334SR	3X3/4	7/8	1	10	046	91.37
469SE-335SR	3X1	1-1/8	1	10	046	91.37
469SE-336SR <sup>1</sup>	3X1-1/4	2-1/4	1	10	046	91.37
469SE-337SR <sup>1</sup>	3X1-1/2	2-1/4	1	10	046	91.37
469SE-338SR	3X2	2-1/4	1	10	046	91.37
469SE-415SR <sup>1</sup>	4X1/2	1-1/8	1	10	046	117.87
469SE-416SR <sup>1</sup>	4X3/4	1-1/8	1	10	046	117.87
469SE-417SR	4X1	1-1/8	1	8	046	117.87
469SE-418SR <sup>1</sup>	4X1-1/4	1-3/4	1	8	046	117.87
469SE-419SR	4X1-1/2	1-3/4	1	8	046	117.87
469SE-420SR	4X2	2-1/4	1	8	046	117.87
469SE-421SR <sup>1</sup>	4X2-1/2	3	1	4	046	122.27
469SE-422SR	4X3	3	4	0	046	133.81
469SE-523SR <sup>1</sup>	6X1/2	1-1/8	1	4	046	184.20
469SE-524SR <sup>1</sup>	6X3/4	1-1/8	1	4	046	184.20





Schedule 40 Fittings Product  
**Clamp-On Saddles & Wedge Clamp Saddles**

**Clamp-On Saddles**

Part Number	Size	Hole Saw Dia	Std Pk	Mstr Ctn	Prod Code	MSRP
-------------	------	--------------	--------	----------	-----------	------

**Clamp-On Saddle x SR Thread Double Outlet, PVC White**

(continued)

**with EPDM O-ring Seal & SS Hardware**

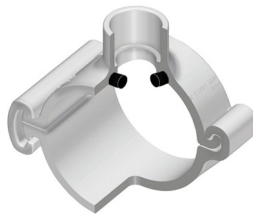
469SE-525SR	6X1	1-1/8	1	4	046	184.20
469SE-526SR <sup>1</sup>	6X1-1/4	2-1/4	1	4	046	184.20
469SE-527SR <sup>1</sup>	6X1-1/2	2-1/4	1	4	046	184.20
469SE-528SR	6X2	2-1/4	1	4	046	184.20
469SE-529SR <sup>1</sup>	6X2-1/2	3	1	4	046	197.03
469SE-530SR	6X3	3	1	4	046	208.04
469SE-532SR	6X4	4	1	4	046	220.38
469SE-573SR <sup>1</sup>	8X1/2	4	1	0	046	260.57
469SE-574SR <sup>1</sup>	8X3/4	4	1	0	046	260.57
469SE-575SR <sup>1</sup>	8X1	4	1	0	046	260.57
469SE-576SR <sup>1</sup>	8X1-1/4	4	1	0	046	260.57
469SE-577SR <sup>1</sup>	8X1-1/2	4	1	0	046	260.57
469SE-578SR <sup>1</sup>	8X2	4	1	0	046	260.57
469SE-579SR <sup>1</sup>	8X2-1/2	4	1	0	046	286.64
469SE-580SR <sup>1</sup>	8X3	4	1	0	046	300.96
469SE-582SR	8X4	4	1	0	046	313.61
469SE-585SR	8X6	6	1	0	046	353.99
469SE-624SR	10X4	4	1	0	046	421.18
469SE-626SR	10X6	6	1	0	046	484.35
469SE-664SR	12X4	4	1	0	046	526.92
469SE-666SR	12X6	6	1	0	046	612.03

<sup>1</sup> Outlet-sized with Bushing

**Wedge Clamp Saddles**

**Wedge Saddle x Socket, PVC White**

**With EPDM O-ring Seal**



466W-210 <sup>1</sup>	1-1/2X3/4	7/8	1	10	046	36.56
466W-211 <sup>1</sup>	1-1/2X1	7/8	1	10	046	36.56
466W-248 <sup>1</sup>	2X3/4	1-1/4	1	10	046	36.56
466W-250 <sup>1</sup>	2X1-1/4	1-1/4	1	10	046	36.56
466W-249 <sup>1</sup>	2X1	1-1/4	1	10	046	36.56
466W-251	2X1-1/2	1-1/4	1	10	046	36.56
466W-334 <sup>1</sup>	3X3/4	2	1	10	046	49.58
466W-335 <sup>1</sup>	3X1	2	1	10	046	49.58
466W-336 <sup>1</sup>	3X1-1/4	2	1	10	046	49.58
466W-337 <sup>1</sup>	3X1-1/2	2	1	10	046	49.58
466W-338	3X2	2	1	10	046	49.58
466W-416 <sup>1</sup>	4X3/4	2	1	10	046	63.53
466W-417 <sup>1</sup>	4X1	2	1	8	046	63.53
466W-418 <sup>1</sup>	4X1-1/4	2	1	8	046	63.53
466W-419 <sup>1</sup>	4X1-1/2	2	1	8	046	63.53
466W-420	4X2	2	1	8	046	63.53
466W-524	6X3/4	3/4	0	0	046	102.54

Part Number	Size	Hole Saw Dia	Std Pk	Mstr Ctn	Prod Code	MSRP
-------------	------	--------------	--------	----------	-----------	------

**Wedge Saddle x Socket, PVC White (continued)**

**With EPDM O-ring Seal**

466W-525	6X1	1	0	0	046	102.54
466W-526	6X1-1/4	1-1/4	0	0	046	102.54
466W-527	6X1-1/2	1-1/2	0	0	046	102.54
466W-528	6X2	2	0	0	046	102.54
466W-574	8X3/4	3/4	0	0	046	124.45
466W-576	8X1-1/4	1-1/4	0	0	046	124.45
466W-575	8X1	1	0	0	046	124.45
466W-577	8X1-1/2	1-1/2	0	0	046	124.45
466W-578	8X2	2	0	0	046	124.45

<sup>1</sup> Outlet-sized with Bushing

**Wedge Saddle x SR Thread, PVC White**

**With EPDM O-ring Seal**



467W-210SR <sup>1</sup>	1-1/2X3/4	7/8	1	10	046	44.16
467W-211SR <sup>1</sup>	1-1/2X1	7/8	1	10	046	44.16
467W-248SR <sup>1</sup>	2X3/4	1-1/4	1	10	046	44.16
467W-249SR <sup>1</sup>	2X1	1-1/4	1	10	046	44.16
467W-250SR <sup>1</sup>	2X1-1/4	1-1/4	1	10	046	44.16
467W-251SR	2X1-1/2	1-1/4	1	10	046	44.16
467W-334SR <sup>1</sup>	3X3/4	2	1	10	046	59.88
467W-335SR <sup>1</sup>	3X1	2	1	10	046	59.88
467W-336SR <sup>1</sup>	3X1-1/4	2	1	10	046	59.88
467W-337SR <sup>1</sup>	3X1-1/2	2	1	10	046	59.88
467W-338SR	3X2	2	1	10	046	59.88
467W-416SR <sup>1</sup>	4X3/4	2	1	8	046	76.73
467W-417SR <sup>1</sup>	4X1	2	1	8	046	76.73
467W-418SR <sup>1</sup>	4X1-1/4	2	1	8	046	76.73
467W-419SR <sup>1</sup>	4X1-1/2	2	1	8	046	76.73
467W-420SR	4X2	2	1	8	046	76.73
467W-524SR	6X3/4	3/4	0	0	046	123.85
467W-525SR	6X1	1	0	0	046	123.85
467W-526SR	6X1-1/4	1-1/4	0	0	046	123.85
467W-527SR	6X1-1/2	1-1/2	0	0	046	123.85
467W-528SR	6X2	2	0	0	046	123.85
467W-574SR	8X3/4	3/4	0	0	046	150.30
467W-575SR	8X1	1	0	0	046	150.30
467W-576SR	8X1-1/4	1-1/4	0	0	046	150.30
467W-577SR	8X1-1/2	1-1/2	0	0	046	150.30
467W-578SR	8X2	2	0	0	046	150.30

<sup>1</sup> Outlet-sized with Bushing