



PVC White Saddles & Hot-Tap Saddles



PRODUCT

Contact Spears® for any Information not found.

Schedule 40 Fittings Product
PVC White Saddles & Hot-Tap Saddles



Glue-On Saddles

Part Number	Size	Std Pk	Mstr Ctn	Prod Code	MSRP
-------------	------	--------	----------	-----------	------

Saddle



IPS O.D. x Socket

NSF-61

463-288	2-1/2X3/4	10	0	040	32.16
463-333 ¹	3X1/2	10	0	040	35.23
463-335 ¹	3X1	10	0	040	35.23
463-336 ¹	3X1-1/4	10	0	040	35.23
463-337	3X1-1/2	10	0	040	32.16
463-338 ²	3X2	10	0	040	35.23
463-415 ¹	4X1/2	10	0	040	47.02
463-416 ¹	4X3/4	10	0	040	57.84
463-417 ¹	4X1	10	0	040	47.02
463-418 ¹	4X1-1/4	10	0	040	47.02
463-419	4X1-1/2	10	0	040	42.96
463-420 ²	4X2	10	0	040	47.02
463-485 ¹	5X1-1/2	6	0	040	58.73
463-486	5X2	6	0	040	53.62
463-523 ¹	6X1/2	5	0	040	70.54
463-525 ¹	6X1	10	0	040	70.54
463-526 ¹	6X1-1/4	5	0	040	70.54
463-527	6X1-1/2	5	0	040	64.46
463-528 ²	6X2	5	0	040	70.54
463-530 ¹	6X3	5	0	040	100.68
463-532	6X4	5	0	040	81.11
463-573 ¹	8X1/2	5	0	040	105.20
463-575 ¹	8X1	5	0	040	105.20
463-576 ¹	8X1-1/4	5	0	040	105.20
463-577	8X1-1/2	5	0	040	96.05
463-578 ²	8X2	5	0	040	105.20
463-580 ¹	8X3	5	0	040	121.98
463-582	8X4	5	0	040	102.98
463-624	10X4	5	0	041	118.07

¹ Outlet-sized with Bushing

² Outlet-sized with Coupling

Note: See following Installation Instructions

Saddle



IPS O.D. x Fipt

NSF-61

464-288	2-1/2X3/4	10	0	040	32.16
464-337	3X1-1/2	10	0	040	32.16
464-419	4X1-1/2	10	0	040	42.96
464-486	5X2	6	0	040	53.62
464-527	6X1-1/2	5	0	040	64.43

Part Number	Size	Std Pk	Mstr Ctn	Prod Code	MSRP
-------------	------	--------	----------	-----------	------

Saddle (continued)

IPS O.D. x Fipt

464-532	6X4	5	0	040	81.11
464-577	8X1-1/2	5	0	040	96.05
464-582	8X4	5	0	040	102.98
464-624	10X4	5	0	041	118.07

Saddle Installation

Instructions:

When Assembling Spears® Saddles to PVC pipe, Spears® Manufacturing Company recommends Spears® PVC-19 Extra Heavy Body Solvent Cement and Spears® PRIMER-68 or PRIMER-70, or equivalent. Although good connections may be accomplished without saddle straps, Spears® Manufacturing Company recommends the use of clamp or strap device during the assembly step to ensure good compression between the pipe and fitting surfaces as the solvent cures. Solvent cemented saddles are non pressure rated. For additional information, contact Spears® Technical Service.

Snap-On Saddle



IPS O.D. x Socket

NSF-61

463-005	1/2	25	300	040	1.68
463-007	3/4	25	200	040	1.86
463-010	1	50	0	040	3.56
463-012	1-1/4	50	0	040	5.54
463-015	1-1/2	25	0	040	6.73
463-020	2	20	0	040	9.83
463-101	3/4X1/2	25	300	040	2.18
463-130	1X1/2	50	0	040	3.56

Note: See following installation instructions

Snap-On Saddle



IPS O.D. x Fipt

464-005	1/2	25	300	040	2.18
464-007	3/4	25	200	040	3.42
464-010	1	50	0	040	6.28
464-071	1/2X1/8	50	300	040	2.18
464-097	3/4X1/8	50	200	040	2.88
464-101	3/4X1/2	25	300	040	2.88
464-130	1X1/2	50	0	040	5.19
464-131	1X3/4	50	0	040	5.19
464-210	1-1/2X3/4	25	0	040	13.07



Schedule 40 Fittings Product
PVC White Saddles & Hot-Tap Saddles

Glue-On Saddles

Part Number	Size	Std Pk	Mstr Ctn	Prod Code	MSRP
-------------	------	--------	----------	-----------	------

Snap-On Saddle (continued)
IPS O.D. x Fipt

Snap-On Saddle Installation Instructions

- The surface to be joined must be wiped clean.
- Using an appropriate applicator, apply a coat of primer to the fitting and pipe.
- While the primer is still wet, apply a generous coat of medium bodied cement first to the pipe, then to the fitting and then to the pipe again, covering an area of the pipe slightly larger than the saddle.
- Without delay, push the saddle onto the pipe and rotate the fitting approximately 15° in each direction to evenly distribute the cement.
- Allow cement to cure.
- Drill fitting and pipe with the recommended size hole saw.
- Remove debris from the line.
- Follow all safe handling precautions.

Solvent cemented saddles are non pressure rated. For additional information, contact Spears® Technical Service.



Saddle

IPS O.D.x Socket Schedule 40

Non Pressure Rated

3763-528	6X2	1	10	390	39.71
3763-530	6X3	1	10	390	40.64
3763-532	6X4	1	8	390	42.27
3763-578	8X2	1	10	390	58.52
3763-580	8X3	1	10	390	59.09
3763-582	8X4	1	10	390	59.81
3763-585	8X6	1	10	390	61.51
3763-621	10X2	1	5	390	73.95
3763-623	10X3	1	10	390	74.98
3763-624	10X4	1	8	390	75.29
3763-626	10X6	1	5	390	88.12
3763-628	10X8	1	5	390	141.40
3763-661	12X2	1	5	390	87.45
3763-663	12X3	1	10	390	89.07
3763-664	12X4	1	10	390	90.98
3763-666	12X6	1	4	390	105.51
3763-668	12X8	1	5	390	168.20
3763-670	12X10	1	4	390	243.22
3763-691	14X2	1	10	390	112.08
3763-693	14X3	1	8	390	119.79
3763-694	14X4	1	5	390	127.96

Part Number	Size	Std Pk	Mstr Ctn	Prod Code	MSRP
-------------	------	--------	----------	-----------	------

Saddle (continued)

IPS O.D.x Socket Schedule 40

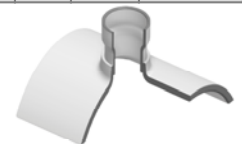
3763-696	14X6	1	8	390	130.53
3763-698	14X8	1	4	390	200.29
3763-700	14X10	1	3	390	257.66
3763-702	14X12	1	0	390	284.01
3763-751	16X2	1	10	390	119.29
3763-753	16X3	1	5	390	120.93
3763-754	16X4	1	10	390	131.63
3763-756	16X6	1	3	390	140.65
3763-758	16X8	1	3	390	209.05
3763-760	16X10	1	0	390	265.71
3763-762	16X12	1	0	390	294.46
3763-764	16X14	1	0	390	306.09
3763-781	18X2	1	10	390	174.87
3763-783	18X3	1	5	390	178.27
3763-784	18X4	1	5	390	181.00
3763-786	18X6	1	4	390	192.72
3763-788	18X8	1	0	390	281.21
3763-790	18X10	1	0	390	311.74
3763-792	18X12	1	0	390	320.35
3763-794	18X14	1	0	390	483.96
3763-796	18X16	1	0	390	631.78
3763-811	20X2	1	12	390	175.28
3763-813	20X3	1	5	390	177.68
3763-814	20X4	1	6	390	186.36
3763-816	20X6	1	0	390	194.64
3763-818	20X8	1	5	390	280.84
3763-820	20X10	1	0	390	311.75
3763-822	20X12	1	0	390	444.45
3763-824	20X14	1	0	390	484.96
3763-826	20X16	1	0	390	634.09
3763-828	20X18	1	0	390	718.62
3763-901	24X2	1	5	390	167.21
3763-903	24X3	1	5	390	184.82
3763-904	24X4	1	5	390	186.87
3763-906	24X6	1	5	390	198.25
3763-908	24X8	1	5	390	283.44
3763-910	24X10	1	0	390	315.31
3763-912	24X12	1	0	390	446.03
3763-914	24X14	1	0	390	499.46
3763-916	24X16	1	0	390	561.34
3763-918	24X18	1	0	390	756.49
3763-920	24X20	1	0	390	847.01

Stub Saddle

IPS O.D x Socket Schedule 40

Non Pressure Rated

3765-528	6X2	1	8	390	42.69
3765-530	6X3	1	4	390	43.71
3765-532	6X4	1	10	390	45.46
3765-578	8X2	1	10	390	62.93
3765-580	8X3	1	4	390	63.54
3765-582	8X4	1	8	390	64.31



Schedule 40 Fittings Product
PVC White Saddles & Hot-Tap Saddles



Glue-On Saddles

Part Number	Size	Std Pk	Mstr Ctn	Prod Code	MSRP
Stub Saddle (continued)					
IPS O.D x Socket Schedule 40					
3765-585	8X6	1	4	390	66.14
3765-621	10X2	1	5	390	79.51
3765-623	10X3	1	5	390	80.63
3765-624	10X4	1	4	390	102.18
3765-626	10X6	1	2	390	94.75
3765-628	10X8	1	2	390	152.03
3765-661	12X2	1	6	390	94.03
3765-663	12X3	1	5	390	95.78
3765-664	12X4	1	2	390	97.82
3765-666	12X6	1	2	390	113.38
3765-668	12X8	1	2	390	180.86
3765-670	12X10	1	2	390	261.53
3765-691	14X2	1	10	390	120.52
3765-693	14X3	1	2	390	121.88
3765-694	14X4	1	5	390	123.41
3765-696	14X6	1	3	390	140.36
3765-698	14X8	1	2	390	213.97
3765-700	14X10	1	0	390	277.05
3765-702	14X12	1	0	390	305.40
3765-751	16X2	1	4	390	128.26
3765-753	16X3	1	5	390	130.03
3765-754	16X4	1	5	390	132.00
3765-756	16X6	1	2	390	151.22
3765-758	16X8	1	0	390	224.79
3765-760	16X10	1	0	390	285.71
3765-762	16X12	1	0	390	316.62
3765-764	16X14	1	0	390	329.13
3765-781	18X2	1	4	390	188.01
3765-783	18X3	1	10	390	147.86
3765-784	18X4	1	10	390	194.61
3765-786	18X6	1	2	390	207.22
3765-788	18X8	1	0	390	302.36
3765-790	18X10	1	0	390	335.19
3765-792	18X12	1	0	390	344.44
3765-794	18X14	1	0	390	520.37
3765-796	18X16	1	0	390	678.76
3765-811	20X2	1	0	390	188.46
3765-813	20X3	1	2	390	191.06
3765-814	20X4	1	2	390	200.39
3765-816	20X6	1	0	390	209.29
3765-818	20X8	1	0	390	301.98
3765-820	20X10	1	0	390	335.20
3765-822	20X12	1	0	390	477.93
3765-824	20X14	1	0	390	521.46
3765-826	20X16	1	0	390	681.82
3765-828	20X18	1	0	390	772.72
3765-901	24X2	1	5	390	179.78
3765-903	24X3	1	2	390	198.72
3765-904	24X4	1	4	390	200.94
3765-906	24X6	1	3	390	213.18
3765-908	24X8	1	0	390	304.78

Part Number	Size	Std Pk	Mstr Ctn	Prod Code	MSRP
-------------	------	--------	----------	-----------	------

Stub Saddle (continued)

IPS O.D x Socket Schedule 40

3765-910	24X10	1	0	390	339.01
3765-912	24X12	1	0	390	479.59
3765-914	24X14	1	0	390	537.07
3765-916	24X16	1	0	390	603.60
3765-918	24X18	1	0	390	813.42
3765-920	24X20	1	0	390	910.77



Schedule 40 Fittings Product

Clamp-On Saddles

Clamp-On Saddles

Part Number	Size	Hole Saw Dia	Std Pk	Mstr Ctn	Prod Code	MSRP
-------------	------	--------------	--------	----------	-----------	------

Clamp-On Saddle x Soc Single Outlet, PVC White

with Buna-N O-ring Seal & Zinc-Plated Hardware



2"- 4" 235, 6" 200, 8"-12" 150 psi @ 73°F (23°C)

466-247	2X1/2	3/4	1	10	046	33.17
466-248	2X3/4	7/8	1	10	046	33.17
466-249	2X1	1-1/8	1	10	046	33.17
466-250	2X1-1/4	1-1/2	1	10	046	33.17
466-251	2X1-1/2	1-1/2	1	10	046	33.17
466-291	2-1/2X1-1/2	1-3/4	1	10	046	44.99
466-333 ¹	3X1/2	7/8	1	10	046	44.99
466-334	3X3/4	7/8	1	10	046	44.99
466-335	3X1	1-1/8	1	10	046	44.99
466-336 ¹	3X1-1/4	2-1/4	1	10	046	44.99
466-337 ¹	3X1-1/2	2-1/4	1	10	046	44.99
466-338	3X2	2-1/4	1	10	046	44.99
466-415 ¹	4X1/2	1-1/8	1	10	046	57.64
466-416 ¹	4X3/4	1-1/8	1	10	046	57.64
466-417	4X1	1-1/8	1	8	046	57.64
466-418 ¹	4X1-1/4	1-3/4	1	8	046	57.64
466-419	4X1-1/2	1-3/4	1	8	046	57.64
466-420	4X2	2-1/4	1	8	046	57.64
466-421 ¹	4X2-1/2	3	1	4	046	65.22
466-422	4X3	3	1	4	046	71.63
466-523 ¹	6X1/2	1-1/8	1	4	046	99.18
466-524 ¹	6X3/4	1-1/8	1	4	046	99.18
466-525	6X1	1-1/8	1	4	046	99.18
466-526 ¹	6X1-1/4	2-1/4	1	4	046	99.18
466-527 ¹	6X1-1/2	2-1/4	1	4	046	99.18
466-528	6X2	2-1/4	1	4	046	99.18
466-529 ¹	6X2-1/2	3	1	4	046	109.03
466-530	6X3	3	1	4	046	113.61
466-532	6X4	4	1	4	046	119.60
466-573 ¹	8X1/2	4	1	0	046	154.19
466-574 ¹	8X3/4	4	1	0	046	154.19
466-575 ¹	8X1	4	1	0	046	154.19
466-576 ¹	8X1-1/4	4	1	0	046	154.19
466-577 ¹	8X1-1/2	4	1	0	046	154.19
466-578	8 X 2	4	1	0	046	154.19
466-579 ¹	8X2-1/2	4	1	0	046	169.54
466-580 ¹	8X3	4	1	0	046	179.78
466-582	8X4	4	1	0	046	190.38
466-585	8X6	6	1	0	046	211.43
466-620 ¹	10X1-1/2	4	1	0	046	251.60
466-624	10X4	4	1	0	046	251.60
466-626	10X6	6	1	0	046	289.29
466-660 ¹	12X1-1/2	4	1	0	046	315.39
466-664	12X4	4	1	0	046	315.39

Part Number	Size	Hole Saw Dia	Std Pk	Mstr Ctn	Prod Code	MSRP
-------------	------	--------------	--------	----------	-----------	------

Clamp-On Saddle x Soc Single Outlet, PVC White (continued)
with Buna-N O-ring Seal & Zinc-Plated Hardware

466-666	12X6	6	1	0	046	365.74
---------	------	---	---	---	-----	--------

¹ Outlet-sized with Bushing

Clamp-On Saddle x Soc Single Outlet, PVC White

with Buna-N O-ring Seal & SS Hardware



2"- 4" 235, 6" 200, 8"-12" 150 psi @ 73°F (23°C)

466S-247	2X1/2	3/4	1	10	046	54.52
466S-248	2X3/4	7/8	1	10	046	54.52
466S-249	2X1	1-1/8	1	10	046	54.52
466S-250	2X1-1/4	1-1/2	1	10	046	54.52
466S-251	2X1-1/2	1-1/2	1	10	046	54.52
466S-291	2-1/2X1-1/2	1-3/4	1	10	046	73.34
466S-333 ¹	3X1/2	7/8	1	10	046	73.34
466S-334	3X3/4	7/8	1	10	046	73.34
466S-335	3X1	1-1/8	1	10	046	73.34
466S-336 ¹	3X1-1/4	2-1/4	1	10	046	73.34
466S-337 ¹	3X1-1/2	2-1/4	1	10	046	73.34
466S-338	3X2	2-1/4	1	10	046	73.34
466S-415 ¹	4X1/2	1-1/8	1	10	046	92.27
466S-416 ¹	4X3/4	1-1/8	1	10	046	92.27
466S-417	4X1	1-1/8	1	10	046	92.27
466S-418 ¹	4X1-1/4	1-3/4	1	8	046	92.27
466S-419	4X1-1/2	1-3/4	1	8	046	92.27
466S-420	4X2	2-1/4	1	8	046	92.27
466S-421 ¹	4X2-1/2	3	1	4	046	100.83
466S-422	4X3	3	1	4	046	104.88
466S-523 ¹	6X1/2	1-1/8	1	4	046	151.15
466S-524 ¹	6X3/4	1-1/8	1	4	046	151.15
466S-525	6X1	1-1/8	1	4	046	151.15
466S-526 ¹	6X1-1/4	2-1/4	1	4	046	151.15
466S-527 ¹	6X1-1/2	2-1/4	1	4	046	151.15
466S-528	6X2	2-1/4	1	4	046	151.15
466S-529 ¹	6X2-1/2	3	1	4	046	156.12
466S-530	6X3	3	1	4	046	159.34
466S-532	6X4	4	1	4	046	166.43
466S-573 ¹	8X1/2	4	1	0	046	220.67
466S-574 ¹	8X3/4	4	1	0	046	220.67
466S-575 ¹	8X1	4	1	0	046	220.67
466S-576 ¹	8X1-1/4	4	1	0	046	220.67
466S-577 ¹	8X1-1/2	4	1	0	046	220.67
466S-578	8 X 2	4	1	0	046	220.67
466S-579 ¹	8X2-1/2	4	1	0	046	242.75
466S-580 ¹	8X3	4	1	0	046	254.92
466S-582	8X4	4	1	0	046	270.28
466S-585	8X6	6	1	0	046	299.96
466S-620 ¹	10X1-1/2	4	1	0	046	356.93
466S-624	10X4	4	1	0	046	356.93
466S-626	10X6	6	1	0	046	410.48

Schedule 40 Fittings Product
Clamp-On Saddles



Clamp-On Saddles

Part Number	Size	Hole Saw Dia	Std Pk	Mstr Ctn	Prod Code	MSRP
Clamp-On Saddle x Soc Single Outlet, PVC White (continued) with BUNA-N O-ring Seal & SS Hardware						
466S-664	12X4	4	1	0	046	447.40
466S-666	12X6	6	1	0	046	519.01

¹ Outlet-sized with Bushing



Clamp-On Saddle x Soc Single Outlet, PVC White

with EPDM O-ring Seal & Zinc-Plated Hardware

2" - 4" 235, 6" 200, 8"-12" 150 psi @ 73°F (23°C)

466E-247	2X1/2	3/4	1	10	046	35.73
466E-248	2X3/4	7/8	1	10	046	35.73
466E-249	2X1	1-1/8	1	10	046	35.73
466E-250	2X1-1/4	1-1/2	1	10	046	35.73
466E-251	2X1-1/2	1-1/2	1	10	046	35.73
466E-291	2-1/2X1-1/2	1-3/4	1	10	046	46.16
466E-333 ¹	3X1/2	7/8	1	10	046	46.16
466E-334	3X3/4	7/8	1	10	046	46.16
466E-335	3X1	1-1/8	1	10	046	46.16
466E-336 ¹	3X1-1/4	2-1/4	1	10	046	46.16
466E-337 ¹	3X1-1/2	2-1/4	1	10	046	46.16
466E-338	3X2	2-1/4	1	10	046	46.16
466E-415 ¹	4X1/2	1-1/8	1	10	046	59.12
466E-416 ¹	4X3/4	1-1/8	1	10	046	59.12
466E-417	4X1	1-1/8	1	8	046	59.12
466E-418 ¹	4X1-1/4	1-3/4	1	8	046	59.12
466E-419	4X1-1/2	1-3/4	1	8	046	59.12
466E-420	4X2	2-1/4	1	8	046	59.12
466E-421 ¹	4X2-1/2	3	1	4	046	71.94
466E-422	4X3	3	1	4	046	80.46
466E-523 ¹	6X1/2	1-1/8	1	4	046	106.06
466E-524 ¹	6X3/4	1-1/8	1	4	046	106.06
466E-525	6X1	1-1/8	1	4	046	106.06
466E-526 ¹	6X1-1/4	2-1/4	1	4	046	106.06
466E-527 ¹	6X1-1/2	1-1/8	1	4	046	106.06
466E-528	6X2	2-1/4	1	4	046	106.06
466E-529 ¹	6X2-1/2	3	1	4	046	117.94
466E-530	6X3	3	1	4	046	124.59
466E-532	6X4	4	1	4	046	131.28
466E-573	8X1/2	4	1	0	046	163.02
466E-574	8X3/4	4	1	0	046	163.02
466E-575	8X1	4	1	0	046	163.02
466E-576 ¹	8X1-1/4	4	1	0	046	163.02
466E-577 ¹	8X1-1/2	4	1	0	046	163.02
466E-578	8 X 2	4	1	0	046	163.02
466E-579	8X2-1/2	4	1	0	046	179.37
466E-580 ¹	8X3	4	1	0	046	188.20
466E-582	8X4	4	1	0	046	199.64
466E-585	8X6	6	1	0	046	221.53

Made in the U.S.A.

Part Number	Size	Hole Saw Dia	Std Pk	Mstr Ctn	Prod Code	MSRP
Clamp-On Saddle x Soc Single Outlet, PVC White (continued) with EPDM O-ring Seal & Zinc-Plated Hardware						
466E-624	10X4	4	1	0	046	263.62
466E-626	10X6	6	1	0	046	303.18
466E-664	12X4	4	1	0	046	330.44
466E-666	12X6	6	1	0	046	390.44

¹ Outlet-sized with Bushing

Clamp-On Saddle x Soc Single Outlet, PVC White

with EPDM O-ring & Seal & SS Hardware

2" - 4" 235, 6" 200, 8"-12" 150 psi @ 73°F (23°C)

466SE-247	2X1/2	3/4	1	10	046	56.23
466SE-248	2X3/4	7/8	1	10	046	56.23
466SE-249	2X1	1-1/8	1	10	046	56.23
466SE-250	2X1-1/4	1-1/2	1	10	046	56.23
466SE-251	2X1-1/2	1-1/2	1	10	046	56.23
466SE-291	2-1/2X1-1/2	1-3/4	1	10	046	75.62
466SE-333 ¹	3X1/2	7/8	1	10	046	75.62
466SE-334	3X3/4	7/8	1	10	046	75.62
466SE-335	3X1	1-1/8	1	10	046	75.62
466SE-336 ¹	3X1-1/4	2-1/4	1	10	046	75.62
466SE-337 ¹	3X1-1/2	2-1/4	1	10	046	75.62
466SE-338	3X2	2-1/4	1	10	046	75.62
466SE-415 ¹	4X1/2	1-1/8	1	10	046	93.36
466SE-416 ¹	4X3/4	1-1/8	1	10	046	93.36
466SE-417	4X1	1-1/8	1	8	046	93.36
466SE-418 ¹	4X1-1/4	1-3/4	1	8	046	93.36
466SE-419	4X1-1/2	1-3/4	1	8	046	93.36
466SE-420	4X2	2-1/4	1	8	046	93.36
466SE-421 ¹	4X2-1/2	3	1	4	046	100.97
466SE-422	4X3	3	1	4	046	111.84
466SE-523 ¹	6X1/2	1-1/8	1	4	046	158.86
466SE-524 ¹	6X3/4	1-1/8	1	4	046	158.86
466SE-525	6X1	1-1/8	1	4	046	158.86
466SE-526 ¹	6X1-1/4	2-1/4	1	4	046	158.86
466SE-527 ¹	6X1-1/2	2-1/4	1	4	046	158.86
466SE-528	6X2	2-1/4	1	4	046	158.86
466SE-529 ¹	6X2-1/2	3	1	4	046	166.86
466SE-530	6X3	3	1	4	046	172.12
466SE-532	6X4	4	1	4	046	180.51
466SE-573	8X1/2	4	1	0	046	230.75
466SE-574 ¹	8X3/4	4	1	0	046	230.75
466SE-575 ¹	8X1	4	1	0	046	230.75
466SE-576	8X1-1/4	4	1	0	046	230.75
466SE-577 ¹	8X1-1/2	4	1	0	046	230.75
466SE-578	8X2	4	1	0	046	230.75
466SE-579 ¹	8X2-1/2	4	1	0	046	253.81
466SE-580 ¹	8X3	4	1	0	046	266.45
466SE-582	8X4	4	1	0	046	282.38
466SE-585	8X6	6	1	0	046	313.49



Clamp-On Saddles

Clamp-On Saddles

Part Number	Size	Hole Saw Dia	Std Pk	Mstr Ctn	Prod Code	MSRP
-------------	------	--------------	--------	----------	-----------	------

Clamp-On Saddle x Soc Single Outlet, PVC White (continued)
with EPDM O-ring & Seal & SS Hardware

466SE-624	10X4	4	1	0	046	372.98
466SE-626	10X6	6	1	0	046	428.94
466SE-664	12X4	4	1	0	046	467.46
466SE-666	12X6	4	1	0	046	542.31

¹ Outlet-sized with Bushing



Clamp-On Saddle x SR Thread Single Outlet, PVC White

with Buna-N O-ring Seal & Zinc-Plated Hardware

2"- 4" 235, 6" 200, 8"-12" 150 psi @ 73°F (23°C)

467-247SR	2X1/2	3/4	1	10	046	37.05
467-248SR	2X3/4	7/8	1	10	046	37.05
467-249SR	2X1	1-1/8	1	10	046	37.05
467-250SR	2X1-1/4	1-1/2	1	10	046	37.05
467-251SR	2X1-1/2	1-1/2	1	10	046	37.05
467-291SR	2-1/2X1-1/2	1-3/4	1	10	046	50.68
467-333SR ¹	3X1/2	7/8	1	10	046	50.68
467-334SR	3X3/4	7/8	1	10	046	50.68
467-335SR	3X1	1-1/8	1	10	046	50.68
467-336SR ¹	3X1-1/4	2-1/4	1	10	046	50.68
467-337SR ¹	3X1-1/2	2-1/4	1	10	046	50.68
467-338SR	3X2	2-1/4	1	10	046	50.68
467-415SR ¹	4X1/2	1-1/8	1	10	046	63.81
467-416SR ¹	4X3/4	1-1/8	1	10	046	63.81
467-417SR	4X1	1-1/8	1	8	046	63.81
467-418SR ¹	4X1-1/4	1-3/4	1	8	046	63.81
467-419SR	4X1-1/2	1-3/4	1	8	046	63.81
467-420SR	4X2	2-1/4	1	8	046	63.81
467-421SR ¹	4X2-1/2	3	1	4	046	69.02
467-422SR	4X3	3	1	4	046	75.27
467-523SR ¹	6X1/2	1-1/8	1	4	046	111.43
467-524SR ¹	6X3/4	1-1/8	1	4	046	111.43
467-525SR	6X1	1-1/8	1	4	046	111.43
467-526SR ¹	6X1-1/4	2-1/4	1	4	046	111.43
467-527SR ¹	6X1-1/2	2-1/4	1	4	046	111.43
467-528SR	6X2	2-1/4	1	4	046	111.43
467-529SR ¹	6X2-1/2	3	1	4	046	131.49
467-530SR	6X3	3	1	4	046	139.91
467-532SR	6X4	4	1	4	046	145.64
467-573SR ¹	8X1/2	4	1	0	046	169.83
467-574SR ¹	8X3/4	4	1	0	046	169.83
467-575SR ¹	8X1	4	1	0	046	169.83
467-576SR ¹	8X1-1/4	4	1	0	046	169.83
467-577SR ¹	8X1-1/2	4	1	0	046	169.83
467-578SR ¹	8X2	4	1	0	046	169.83
467-579SR ¹	8X2-1/2	4	1	0	046	186.78
467-580SR ¹	8X3	4	1	0	046	196.21

Part Number	Size	Hole Saw Dia	Std Pk	Mstr Ctn	Prod Code	MSRP
-------------	------	--------------	--------	----------	-----------	------

Clamp-On Saddle x SR Thread Single Outlet, PVC White (continued)
with Buna-N O-ring Seal & Zinc-Plated Hardware

467-582SR	8X4	4	1	0	046	207.95
467-585SR	8X6	6	1	0	046	228.75
467-624SR	10X4	4	1	0	046	272.28
467-626SR	10X6	6	1	0	046	312.97
467-664SR	12X4	4	1	0	046	341.07
467-666SR	12X6	6	1	0	046	395.62

¹ Outlet-sized with Bushing

Clamp-On Saddle x SR Thread Single Outlet, PVC White

with Buna-N O-ring Seal & SS Hardware

2"- 4" 235, 6" 200, 8"-12" 150 psi @ 73°F (23°C)

467S-247SR	2X1/2	3/4	1	10	046	60.60
467S-248SR	2X3/4	7/8	1	10	046	60.60
467S-249SR	2X1	1-1/8	1	10	046	60.60
467S-250SR	2X1-1/4	1-1/2	1	10	046	60.60
467S-251SR	2X1-1/2	1-1/2	1	10	046	60.60
467S-291SR	2-1/2X1-1/2	1-3/4	1	10	046	81.49
467S-333SR ¹	3X1/2	7/8	1	10	046	81.49
467S-334SR	3X3/4	7/8	1	10	046	81.49
467S-335SR	3X1	1-1/8	1	10	046	81.49
467S-336SR ¹	3X1-1/4	2-1/4	1	10	046	81.49
467S-337SR ¹	3X1-1/2	2-1/4	1	10	046	81.49
467S-338SR	3X2	2-1/4	1	10	046	81.49
467S-415SR ¹	4X1/2	1-1/8	1	10	046	102.54
467S-416SR ¹	4X3/4	1-1/8	1	10	046	102.54
467S-417SR	4X1	1-1/8	1	8	046	102.54
467S-418SR ¹	4X1-1/4	1-3/4	1	8	046	102.54
467S-419SR	4X1-1/2	1-3/4	1	8	046	102.54
467S-420SR	4X2	2-1/4	1	8	046	102.54
467S-421SR ¹	4X2-1/2	3	1	4	046	109.03
467S-422SR	4X3	3	1	4	046	115.16
467S-523SR ¹	6X1/2	1-1/8	1	4	046	170.86
467S-524SR ¹	6X3/4	1-1/8	1	4	046	170.86
467S-525SR	6X1	1-1/8	1	4	046	170.86
467S-526SR ¹	6X1-1/4	2-1/4	1	4	046	170.86
467S-527SR ¹	6X1-1/2	2-1/4	1	4	046	170.86
467S-528SR	6X2	2-1/4	1	4	046	170.86
467S-529SR ¹	6X2-1/2	3	1	4	046	183.87
467S-530SR	6X3	3	1	4	046	189.25
467S-532SR	6X4	4	1	4	046	196.59
467S-573SR ¹	8X1/2	4	1	0	046	246.07
467S-574SR ¹	8X3/4	4	1	0	046	246.07
467S-575SR ¹	8X1	4	1	0	046	246.07
467S-576SR ¹	8X1-1/4	4	1	0	046	246.07
467S-577SR ¹	8X1-1/2	4	1	0	046	246.07
467S-578SR ¹	8X2	4	1	0	046	246.07
467S-579SR ¹	8X2-1/2	4	1	0	046	267.24

Schedule 40 Fittings Product
Clamp-On Saddles



Clamp-On Saddles

Part Number	Size	Hole Saw Dia	Std Pk	Mstr Ctn	Prod Code	MSRP
-------------	------	--------------	--------	----------	-----------	------

Clamp-On Saddle x SR Thread Single Outlet, PVC White

(continued)

with Buna-N O-ring Seal & SS Hardware

467S-580SR ¹	8X3	4	1	0	046	280.58
467S-582SR	8X4	4	1	0	046	297.44
467S-585SR	8X6	6	1	0	046	327.02
467S-624SR	10X4	4	1	0	046	389.23
467S-626SR	10X6	6	1	0	046	447.60
467S-664SR	12X4	4	1	0	046	487.93
467S-666SR	12X6	6	1	0	046	565.77

¹ Outlet-sized with Bushing



Clamp-On Saddle x SR Thread Single Outlet, PVC White

with EPDM O-ring Seal & Zinc-Plated Hardware

2"- 4" 235, 6" 200, 8"-12" 150 psi @ 73°F (23°C)

467E-247SR	2X1/2	3/4	1	10	046	39.87
467E-248SR	2X3/4	7/8	1	10	046	39.87
467E-249SR	2X1	1-1/8	1	10	046	39.87
467E-250SR	2X1-1/4	1-1/2	1	10	046	39.87
467E-251SR	2X1-1/2	1-1/2	1	10	046	39.87
467E-291SR	2-1/2X1-1/2	1-3/4	1	10	046	55.60
467E-333SR ¹	3X1/2	7/8	1	10	046	55.60
467E-334SR	3X3/4	7/8	1	10	046	55.60
467E-335SR	3X1	1-1/8	1	10	046	55.60
467E-336SR ¹	3X1-1/4	2-1/4	1	10	046	55.60
467E-337SR ¹	3X1-1/2	2-1/4	1	10	046	55.60
467E-338SR	3X2	2-1/4	1	10	046	55.60
467E-415SR ¹	4X1/2	1-1/8	1	10	046	69.52
467E-416SR ¹	4X3/4	1-1/8	1	10	046	69.52
467E-417SR	4X1	1-1/8	1	8	046	69.52
467E-418SR ¹	4X1-1/4	1-3/4	1	8	046	69.52
467E-419SR	4X1-1/2	1-3/4	1	8	046	69.52
467E-420SR	4X2	2-1/4	1	8	046	69.52
467E-421SR ¹	4X2-1/2	3	1	4	046	74.49
467E-422SR	4X3	3	1	4	046	79.85
467E-523SR ¹	6X1/2	1-1/8	1	4	046	115.99
467E-524SR ¹	6X3/4	1-1/8	1	4	046	115.99
467E-525SR	6X1	1-1/8	1	4	046	115.99
467E-526SR ¹	6X1-1/4	2-1/4	1	4	046	115.99
467E-527SR ¹	6X1-1/2	2-1/4	1	4	046	115.99
467E-528SR	6X2	2-1/4	1	4	046	115.99
467E-529SR ¹	6X2-1/2	3	1	4	046	143.67
467E-530SR	6X3	3	1	4	046	151.16
467E-532SR	6X4	4	1	4	046	158.77
467E-573SR ¹	8X1/2	4	1	0	046	175.74
467E-574SR ¹	8X3/4	4	1	0	046	175.74
467E-575SR ¹	8X1	4	1	0	046	175.74
467E-576SR ¹	8X1-1/4	4	1	0	046	175.74

Made in the U.S.A.

Part Number	Size	Hole Saw Dia	Std Pk	Mstr Ctn	Prod Code	MSRP
-------------	------	--------------	--------	----------	-----------	------

Clamp-On Saddle x SR Thread Single Outlet, PVC White

(continued)

with EPDM O-ring Seal & Zinc-Plated Hardware

467E-577SR ¹	8X1-1/2	4	1	0	046	175.74
467E-578SR ¹	8X2	4	1	0	046	175.74
467E-579SR ¹	8X2-1/2	4	1	0	046	193.31
467E-580SR ¹	8X3	4	1	0	046	203.02
467E-582SR	8X4	4	1	0	046	215.20
467E-585SR	8X6	6	1	0	046	238.74
467E-624SR	10X4	4	1	0	046	284.08
467E-626SR	10X6	6	1	0	046	326.64
467E-664SR	12X4	4	1	0	046	356.13
467E-666SR	12X6	6	1	0	046	413.11

¹ Outlet-sized with Bushing



Clamp-On Saddle x SR Thread Single Outlet, PVC White

with EPDM O-ring Seal & SS Hardware

2"- 4" 235, 6" 200, 8"-12" 150 psi @ 73°F (23°C)

467SE-247SR	2X1/2	3/4	1	10	046	62.43
467SE-248SR	2X3/4	7/8	1	10	046	62.43
467SE-249SR	2X1	1-1/8	1	10	046	62.43
467SE-250SR	2X1-1/4	1-1/2	1	10	046	62.43
467SE-251SR	2X1-1/2	1-1/2	1	10	046	62.43
467SE-291SR	2-1/2X1-1/2	1-3/4	1	10	046	83.77
467SE-333SR ¹	3X1/2	7/8	1	10	046	83.77
467SE-334SR	3X3/4	7/8	1	10	046	83.77
467SE-335SR	3X1	1-1/8	1	10	046	83.77
467SE-336SR ¹	3X1-1/4	2-1/4	1	10	046	83.77
467SE-337SR ¹	3X1-1/2	2-1/4	1	10	046	83.77
467SE-338SR	3X2	2-1/4	1	10	046	83.77
467SE-415SR ¹	4X1/2	1-1/8	1	10	046	105.11
467SE-416SR ¹	4X3/4	1-1/8	1	10	046	105.11
467SE-417SR	4X1	1-1/8	1	8	046	105.11
467SE-418SR ¹	4X1-1/4	1-3/4	1	8	046	105.11
467SE-419SR	4X1-1/2	1-3/4	1	8	046	105.11
467SE-420SR	4X2	2-1/4	1	8	046	105.11
467SE-421SR ¹	4X2-1/2	3	1	4	046	109.60
467SE-422SR	4X3	3	1	4	046	115.67
467SE-523SR ¹	6X1/2	1-1/8	1	4	046	176.62
467SE-524SR ¹	6X3/4	1-1/8	1	4	046	176.62
467SE-525SR	6X1	1-1/8	1	4	046	176.62
467SE-526SR ¹	6X1-1/4	2-1/4	1	4	046	176.62
467SE-527SR ¹	6X1-1/2	2-1/4	1	4	046	176.62
467SE-528SR	6X2	2-1/4	1	4	046	176.62
467SE-529SR ¹	6X2-1/2	3	1	4	046	191.72
467SE-530SR	6X3	3	1	4	046	198.87
467SE-532SR	6X4	4	1	4	046	202.46
467SE-573SR ¹	8X1/2	4	1	0	046	253.39
467SE-574SR ¹	8X3/4	4	1	0	046	253.39
467SE-575SR ¹	8X1	4	1	0	046	253.39



Clamp-On Saddles

Clamp-On Saddles

Part Number	Size	Hole Saw Dia	Std Pk	Mstr Ctn	Prod Code	MSRP
Clamp-On Saddle x SR Thread Single Outlet, PVC White						
(continued)						
with EPDM O-ring Seal & SS Hardware						
467SE-576SR ¹	8X1-1/4	4	1	0	046	253.39
467SE-577SR ¹	8X1-1/2	4	1	0	046	253.39
467SE-578SR ¹	8X2	4	1	0	046	253.39
467SE-579SR ¹	8X2-1/2	4	1	0	046	278.86
467SE-580SR ¹	8X3	4	1	0	046	292.73
467SE-582SR	8X4	4	1	0	046	310.39
467SE-585SR	8X6	6	1	0	046	341.36
467SE-624SR	10X4	4	1	0	046	406.08
467SE-626SR	10X6	6	1	0	046	467.29
467SE-666SR	12X6	6	1	0	046	590.66

¹ Outlet-sized with Bushing



Clamp-On Saddle x Soc Double Outlet, PVC White

with Buna-N O-ring Seal & Zinc-Plated Hardware

2"- 4" 235, 6" 200, 8"-12" 150 psi @ 73°F (23°C)

468-247	2X1/2	3/4	1	10	046	40.05
468-248	2X3/4	7/8	1	10	046	40.05
468-249	2X1	1-1/8	1	10	046	40.05
468-250	2X1-1/4	1-1/2	1	10	046	40.05
468-251	2X1-1/2	1-1/2	1	10	046	40.05
468-291	2-1/2X1-1/2	1-3/4	1	10	046	53.46
468-333 ¹	3X1/2	7/8	1	10	046	53.46
468-334	3X3/4	7/8	1	10	046	53.46
468-335	3X1	1-1/8	1	10	046	53.46
468-336 ¹	3X1-1/4	2-1/4	1	10	046	53.46
468-337 ¹	3X1-1/2	2-1/4	1	10	046	53.46
468-338	3X2	2-1/4	1	10	046	53.46
468-415 ¹	4X1/2	1-1/8	1	10	046	67.75
468-416 ¹	4X3/4	1-1/8	1	10	046	67.75
468-417	4X1	1-1/8	1	8	046	67.75
468-418 ¹	4X1-1/4	1-3/4	1	8	046	67.75
468-419	4X1-1/2	1-3/4	1	8	046	67.75
468-420	4X2	2-1/4	1	8	046	67.75
468-421 ¹	4X2-1/2	3	1	4	046	70.92
468-422	4X3	3	1	4	046	80.05
468-523 ¹	6X1/2	1-1/8	1	4	046	111.55
468-524 ¹	6X3/4	1-1/8	1	4	046	111.55
468-525	6X1	1-1/8	1	4	046	111.55
468-526 ¹	6X1-1/4	2-1/4	1	4	046	111.55
468-527 ¹	6X1-1/2	2-1/4	1	4	046	111.55
468-528	6X2	2-1/4	1	4	046	111.55
468-529 ¹	6X2-1/2	3	1	4	046	126.96
468-530	6X3	3	1	4	046	132.73
468-532	6X4	4	1	4	046	142.68
468-573 ¹	8X1/2	4	1	0	046	160.09

Part Number	Size	Hole Saw Dia	Std Pk	Mstr Ctn	Prod Code	MSRP
-------------	------	--------------	--------	----------	-----------	------

Clamp-On Saddle x Soc Double Outlet, PVC White (continued)

with Buna-N O-ring Seal & Zinc-Plated Hardware

468-574 ¹	8X3/4	4	1	0	046	160.09
468-575 ¹	8X1	4	1	0	046	160.09
468-576 ¹	8X1-1/4	4	1	0	046	160.09
468-577 ¹	8X1-1/2	4	1	0	046	160.09
468-578 ¹	8X2	4	1	0	046	160.09
468-579 ¹	8X2-1/2	4	1	0	046	176.04
468-580 ¹	8X3	4	1	0	046	184.89
468-582	8X4	4	1	0	046	196.03
468-585	8X6	6	1	0	046	217.47
468-624	10X4	4	1	0	046	258.80
468-626	10X6	6	1	0	046	297.53
468-664	12X4	4	1	0	046	324.42
468-666	12X6	6	1	0	046	376.37

¹ Outlet-sized with Bushing



Clamp-On Saddle x Soc Double Outlet, PVC White

with Buna-N O-ring Seal & SS Hardware

2"- 4" 235, 6" 200, 8"-12" 150 psi @ 73°F (23°C)

468S-247	2X1/2	3/4	1	10	046	64.27
468S-248	2X3/4	7/8	1	10	046	64.27
468S-249	2X1	1-1/8	1	10	046	64.27
468S-250	2X1-1/4	1-1/2	1	10	046	64.27
468S-251	2X1-1/2	1-1/2	1	10	046	64.27
468S-291	2-1/2X1-1/2	1-3/4	1	10	046	85.81
468S-333 ¹	3X1/2	7/8	1	10	046	85.81
468S-334	3X3/4	7/8	1	10	046	85.81
468S-335	3X1	1-1/8	1	10	046	85.81
468S-336 ¹	3X1-1/4	2-1/4	1	10	046	85.81
468S-337 ¹	3X1-1/2	2-1/4	1	10	046	85.81
468S-338	3X2	2-1/4	1	10	046	85.81
468S-415 ¹	4X1/2	1-1/8	1	10	046	107.09
468S-416 ¹	4X3/4	1-1/8	1	10	046	107.09
468S-417	4X1	1-1/8	1	8	046	107.09
468S-418 ¹	4X1-1/4	1-3/4	1	8	046	107.09
468S-419	4X1-1/2	1-3/4	1	8	046	107.09
468S-420	4X2	2-1/4	1	8	046	107.09
468S-421 ¹	4X2-1/2	3	1	4	046	112.55
468S-422	4X3	3	1	4	046	123.49
468S-523 ¹	6X1/2	1-1/8	1	4	046	176.89
468S-524 ¹	6X3/4	1-1/8	1	4	046	176.89
468S-525	6X1	1-1/8	1	4	046	176.89
468S-526 ¹	6X1-1/4	2-1/4	1	4	046	176.89
468S-527 ¹	6X1-1/2	2-1/4	1	4	046	176.89
468S-528	6X2	2-1/4	1	4	046	176.89
468S-529 ¹	6X2-1/2	3	1	4	046	184.83
468S-530	6X3	3	1	4	046	188.01
468S-532	6X4	4	1	4	046	194.12
468S-573 ¹	8X1/2	4	1	0	046	237.96

Schedule 40 Fittings Product
Clamp-On Saddles



Clamp-On Saddles

Part Number	Size	Hole Saw Dia	Std Pk	Mstr Ctn	Prod Code	MSRP
-------------	------	--------------	--------	----------	-----------	------

**Clamp-On Saddle x Soc Double Outlet, PVC White (continued)
 with Buna-N O-ring Seal & SS Hardware**

468S-574 ¹	8X3/4	4	1	0	046	237.96
468S-575 ¹	8X1	4	1	0	046	237.96
468S-576 ¹	8X1-1/4	4	1	0	046	237.96
468S-577 ¹	8X1-1/2	4	1	0	046	237.96
468S-578 ¹	8X2	4	1	0	046	237.96
468S-579 ¹	8X2-1/2	4	1	0	046	261.72
468S-580 ¹	8X3	4	1	0	046	274.97
468S-582	8X4	4	1	0	046	291.33
468S-585	8X6	6	1	0	046	320.41
468S-624	10X4	4	1	0	046	381.19
468S-626	10X6	6	1	0	046	438.48
468S-664	12X4	4	1	0	046	477.93
468S-666	12X6	6	1	0	046	554.36

¹ Outlet-sized with Bushing.



**Clamp-On Saddle x Soc Double Outlet,
 PVC White**

**with EPDM O-ring Seal & Zinc-Plated
 Hardware**

2"- 4" 235, 6" 200, 8"-12" 150 psi @ 73°F (23°C)

468E-247	2X1/2	3/4	1	10	046	42.12
468E-248	2X3/4	7/8	1	10	046	42.12
468E-249	2X1	1-1/8	1	10	046	42.12
468E-250	2X1-1/4	1-1/2	1	10	046	42.12
468E-251	2X1-1/2	1-1/2	1	10	046	42.12
468E-291	2-1/2X1-1/2	1-3/4	1	10	046	58.16
468E-333 ¹	3X1/2	7/8	1	10	046	58.16
468E-334	3X3/4	7/8	1	10	046	58.16
468E-335	3X1	1-1/8	1	10	046	58.16
468E-336 ¹	3X1-1/4	2-1/4	1	10	046	58.16
468E-337 ¹	3X1-1/2	2-1/4	1	10	046	58.16
468E-338	3X2	2-1/4	1	10	046	58.16
468E-415 ¹	4X1/2	1-1/8	1	10	046	70.73
468E-416 ¹	4X3/4	1-1/8	1	10	046	70.73
468E-417	4X1	1-1/8	1	8	046	70.73
468E-418 ¹	4X1-1/4	1-3/4	1	8	046	70.73
468E-419	4X1-1/2	1-3/4	1	8	046	70.73
468E-420	4X2	2-1/4	1	8	046	70.73
468E-421 ¹	4X2-1/2	3	1	4	046	75.84
468E-422	4X3	3	4	0	046	84.52
468E-523 ¹	6X1/2	1-1/8	1	4	046	118.74
468E-524 ¹	6X3/4	1-1/8	1	4	046	118.74
468E-525	6X1	1-1/8	1	4	046	118.74
468E-526 ¹	6X1-1/4	2-1/4	1	4	046	118.74
468E-527 ¹	6X1-1/2	2-1/4	1	4	046	118.74
468E-528	6X2	2-1/4	1	4	046	118.74
468E-529 ¹	6X2-1/2	3	1	4	046	132.79
468E-530	6X3	3	1	4	046	142.86

Made in the U.S.A.

Part Number	Size	Hole Saw Dia	Std Pk	Mstr Ctn	Prod Code	MSRP
-------------	------	--------------	--------	----------	-----------	------

**Clamp-On Saddle x Soc Double Outlet, PVC White (continued)
 with EPDM O-ring Seal & Zinc-Plated Hardware**

468E-532	6X4	4	1	4	046	150.52
468E-573 ¹	8X1/2	4	1	0	046	179.14
468E-574 ¹	8X3/4	4	1	0	046	179.14
468E-575 ¹	8X1	4	1	0	046	179.14
468E-576 ¹	8X1-1/4	4	1	0	046	179.14
468E-577 ¹	8X1-1/2	4	1	0	046	179.14
468E-578 ¹	8X2	4	1	0	046	179.14
468E-579 ¹	8X2-1/2	4	1	0	046	197.14
468E-580 ¹	8X3	4	1	0	046	207.06
468E-582	8X4	4	1	0	046	219.52
468E-585	8X6	6	1	0	046	241.38
468E-624	10X4	4	1	0	046	287.31
468E-626	10X6	6	1	0	046	330.25
468E-664	12X4	4	1	0	046	360.14
468E-666	12X6	6	1	0	046	417.61

¹ Outlet-sized with Bushing



**Clamp-On Saddle x Soc Double Outlet,
 PVC White**

with EPDM O-ring Seal & SS Hardware

2"- 4" 235, 6" 200, 8"-12" 150 psi @ 73°F (23°C)

468SE-247	2X1/2	3/4	1	10	046	68.73
468SE-248	2X3/4	7/8	1	10	046	68.73
468SE-249	2X1	1-1/8	1	10	046	68.73
468SE-250	2X1-1/4	1-1/2	1	10	046	68.73
468SE-251	2X1-1/2	1-1/2	1	10	046	68.73
468SE-291	2-1/2X1-1/2	1-3/4	1	10	046	90.89
468SE-333 ¹	3X1/2	7/8	1	10	046	90.89
468SE-334	3X3/4	7/8	1	10	046	90.89
468SE-335	3X1	1-1/8	1	10	046	90.89
468SE-336 ¹	3X1-1/4	2-1/4	1	10	046	90.89
468SE-337 ¹	3X1-1/2	2-1/4	1	10	046	90.89
468SE-338	3X2	2-1/4	1	10	046	90.89
468SE-415 ¹	4X1/2	1-1/8	1	10	046	113.45
468SE-416 ¹	4X3/4	1-1/8	1	10	046	113.45
468SE-417	4X1	1-1/8	1	8	046	113.45
468SE-418 ¹	4X1-1/4	1-3/4	1	8	046	113.45
468SE-419	4X1-1/2	1-3/4	1	8	046	113.45
468SE-420	4X2	2-1/4	1	8	046	113.45
468SE-421 ¹	4X2-1/2	3	1	4	046	123.84
468SE-422	4X3	3	4	0	046	132.01
468SE-523 ¹	6X1/2	1-1/8	1	4	046	189.12
468SE-524 ¹	6X3/4	1-1/8	1	4	046	189.12
468SE-525	6X1	1-1/8	1	4	046	189.12
468SE-526 ¹	6X1-1/4	2-1/4	1	4	046	189.12
468SE-527 ¹	6X1-1/2	2-1/4	1	4	046	189.12
468SE-528	6X2	2-1/4	1	4	046	189.12
468SE-529 ¹	6X2-1/2	3	1	4	046	194.23
468SE-530	6X3	3	1	4	046	200.98



Clamp-On Saddles

Clamp-On Saddles

Part Number	Size	Hole Saw Dia	Std Pk	Mstr Ctn	Prod Code	MSRP
-------------	------	--------------	--------	----------	-----------	------

Clamp-On Saddle x Soc Double Outlet, PVC White (continued) with EPDM O-ring Seal & SS Hardware

468SE-532	6X4	4	1	4	046	212.56
468SE-573 ¹	8X1/2	4	1	0	046	269.44
468SE-574 ¹	8X3/4	4	1	0	046	269.44
468SE-575 ¹	8X1	4	1	0	046	269.44
468SE-576 ¹	8X1-1/4	4	1	0	046	269.44
468SE-577 ¹	8X1-1/2	4	1	0	046	269.44
468SE-578 ¹	8X2	4	1	0	046	269.44
468SE-579 ¹	8X2-1/2	4	1	0	046	296.44
468SE-580 ¹	8X3	4	1	0	046	306.56
468SE-582	8X4	4	1	0	046	330.33
468SE-585	8X6	6	1	0	046	366.15
468SE-624	10X4	4	1	0	046	435.67
468SE-626	10X6	6	1	0	046	500.97
468SE-664	12X4	4	1	0	046	546.33
468SE-666	12X6	6	1	0	046	633.60

¹ Outlet-sized with Bushing



Clamp-On Saddle x SR Thread Double Outlet, PVC White

with Buna-N O-ring Seal & Zinc-Plated Hardware

2"- 4" 235, 6" 200, 8"-12" 150 psi @ 73°F (23°C)

469-247SR	2X1/2	3/4	1	10	046	45.27
469-248SR	2X3/4	7/8	1	10	046	45.27
469-249SR	2X1	1-1/8	1	10	046	45.27
469-250SR	2X1-1/4	1-1/2	1	10	046	45.27
469-251SR	2X1-1/2	1-1/2	1	10	046	45.27
469-291SR	2-1/2X1-1/2	1-3/4	1	10	046	60.13
469-333SR ¹	3X1/2	7/8	1	10	046	60.13
469-334SR	3X3/4	7/8	1	10	046	60.13
469-335SR	3X1	1-1/8	1	10	046	60.13
469-336SR ¹	3X1-1/4	2-1/4	1	10	046	60.13
469-337SR ¹	3X1-1/2	2-1/4	1	10	046	60.13
469-338SR	3X2	2-1/4	1	10	046	60.13
469-415SR ¹	4X1/2	1-1/8	1	10	046	90.26
469-416SR ¹	4X3/4	1-1/8	1	10	046	90.26
469-417SR	4X1	1-1/8	1	8	046	90.26
469-418SR ¹	4X1-1/4	1-3/4	1	8	046	90.26
469-419SR	4X1-1/2	1-3/4	1	8	046	90.26
469-420SR	4X2	2-1/4	1	8	046	90.26
469-421SR ¹	4X2-1/2	3	1	4	046	96.98
469-422SR	4X3	3	1	4	046	231.35
469-523SR ¹	6X1/2	1-1/8	1	4	046	147.15
469-524SR ¹	6X3/4	1-1/8	1	4	046	147.15
469-525SR	6X1	1-1/8	1	4	046	147.15
469-526SR ¹	6X1-1/4	2-1/4	1	4	046	147.15
469-527SR ¹	6X1-1/2	2-1/4	1	4	046	147.15
469-528SR	6X2	2-1/4	1	4	046	147.15

Part Number	Size	Hole Saw Dia	Std Pk	Mstr Ctn	Prod Code	MSRP
-------------	------	--------------	--------	----------	-----------	------

Clamp-On Saddle x SR Thread Double Outlet, PVC White (continued) with Buna-N O-ring Seal & Zinc-Plated Hardware

469-529SR ¹	6X2-1/2	3	1	4	046	176.47
469-530SR	6X3	3	1	4	046	185.26
469-532SR	6X4	4	1	4	046	193.99
469-573SR ¹	8X1/2	4	1	0	046	215.67
469-574SR ¹	8X3/4	4	1	0	046	215.67
469-575SR ¹	8X1	4	1	0	046	215.67
469-576SR ¹	8X1-1/4	4	1	0	046	215.67
469-577SR ¹	8X1-1/2	4	1	0	046	215.67
469-578SR ¹	8X2	4	1	0	046	215.67
469-579SR ¹	8X2-1/2	4	1	0	046	238.74
469-580SR ¹	8X3	4	1	0	046	250.28
469-582SR	8X4	4	1	0	046	265.43
469-585SR	8X6	6	1	0	046	291.93
469-624SR	10X4	4	1	0	046	347.40
469-626SR	10X6	6	1	0	046	399.25
469-664SR	12X4	4	1	0	046	468.46
469-666SR	12X6	6	1	0	046	505.07

¹ Outlet-sized with Bushing



Clamp-On Saddle x SR Thread Double Outlet, PVC White

with Buna-N O-ring Seal & SS Hardware

2"- 4" 235, 6" 200, 8"-12" 150 psi @ 73°F (23°C)

469S-247SR	2X1/2	3/4	1	10	046	71.43
469S-248SR	2X3/4	7/8	1	10	046	71.43
469S-249SR	2X1	1-1/8	1	10	046	71.43
469S-250SR	2X1-1/4	1-1/2	1	10	046	71.43
469S-251SR	2X1-1/2	1-1/2	1	10	046	71.43
469S-291SR	2-1/2X1-1/2	1-3/4	1	10	046	95.33
469S-333SR ¹	3X1/2	7/8	1	10	046	95.33
469S-334SR	3X3/4	7/8	1	10	046	95.33
469S-335SR	3X1	1-1/8	1	10	046	95.33
469S-336SR ¹	3X1-1/4	2-1/4	1	10	046	95.33
469S-337SR ¹	3X1-1/2	2-1/4	1	10	046	95.33
469S-338SR	3X2	2-1/4	1	10	046	95.33
469S-415SR ¹	4X1/2	1-1/8	1	10	046	121.13
469S-416SR ¹	4X3/4	1-1/8	1	10	046	121.13
469S-417SR	4X1	1-1/8	1	8	046	121.13
469S-418SR ¹	4X1-1/4	1-3/4	1	8	046	121.13
469S-419SR	4X1-1/2	1-3/4	1	8	046	121.13
469S-420SR	4X2	2-1/4	1	8	046	121.13
469S-421SR ¹	4X2-1/2	3	1	4	046	127.78
469S-422SR	4X3	3	4	0	046	139.91
469S-523SR ¹	6X1/2	1-1/8	1	4	046	199.00
469S-524SR ¹	6X3/4	1-1/8	1	4	046	199.00
469S-525SR	6X1	1-1/8	1	4	046	199.00
469S-526SR ¹	6X1-1/4	2-1/4	1	4	046	199.00
469S-527SR ¹	6X1-1/2	2-1/4	1	4	046	199.00

Schedule 40 Fittings Product
Clamp-On Saddles



Clamp-On Saddles

Part Number	Size	Hole Saw Dia	Std Pk	Mstr Ctn	Prod Code	MSRP
Clamp-On Saddle x SR Thread Double Outlet, PVC White						
(continued)						
with Buna-N O-ring Seal & SS Hardware						
469S-528SR	6X2	2-1/4	1	4	046	199.00
469S-529SR ¹	6X2-1/2	3	1	4	046	208.31
469S-530SR	6X3	3	1	4	046	220.35
469S-532SR	6X4	4	1	4	046	230.08
469S-573SR ¹	8X1/2	4	1	0	046	282.19
469S-574SR ¹	8X3/4	4	1	0	046	282.19
469S-575SR ¹	8X1	4	1	0	046	282.19
469S-576SR ¹	8X1-1/4	4	1	0	046	282.19
469S-577SR ¹	8X1-1/2	4	1	0	046	282.19
469S-578SR ¹	8X2	4	1	0	046	282.19
469S-579SR ¹	8X2-1/2	4	1	0	046	310.39
469S-580SR ¹	8X3	4	1	0	046	325.82
469S-582SR	8X4	4	1	0	046	345.07
469S-585SR	8X6	6	1	0	046	383.20
469S-624SR	10X4	4	1	0	046	456.04
469S-626SR	10X6	6	1	0	046	524.44
469S-664SR	12X4	4	1	0	046	571.59
469S-666SR	12X6	6	1	0	046	662.89

¹ Outlet-sized with Bushing



Clamp-On Saddle x SR Thread Double Outlet, PVC White

with EPDM O-ring Seal & Zinc-Plated Hardware

2"- 4" 235, 6" 200, 8"-12" 150 psi @ 73°F (23°C)

469E-247SR	2X1/2	3/4	1	10	046	49.77
469E-248SR	2X3/4	7/8	1	10	046	49.77
469E-249SR	2X1	1-1/8	1	10	046	49.77
469E-250SR	2X1-1/4	1-1/2	1	10	046	49.77
469E-251SR	2X1-1/2	1-1/2	1	10	046	49.77
469E-291SR	2-1/2X1-1/2	1-3/4	1	10	046	67.49
469E-333SR ¹	3X1/2	7/8	1	10	046	67.49
469E-334SR	3X3/4	7/8	1	10	046	67.49
469E-335SR	3X1	1-1/8	1	10	046	67.49
469E-336SR ¹	3X1-1/4	2-1/4	1	10	046	67.49
469E-337SR ¹	3X1-1/2	2-1/4	1	10	046	67.49
469E-338SR	3X2	2-1/4	1	16	046	67.49
469E-415SR ¹	4X1/2	1-1/8	1	10	046	105.20
469E-416SR ¹	4X3/4	1-1/8	1	10	046	105.20
469E-417SR	4X1	1-1/8	1	8	046	105.20
469E-418SR ¹	4X1-1/4	1-3/4	1	8	046	105.20
469E-419SR	4X1-1/2	1-3/4	1	8	046	105.20
469E-420SR	4X2	2-1/4	1	8	046	105.20
469E-421SR ¹	4X2-1/2	3	1	4	046	107.28
469E-422SR	4X3	3	4	0	046	137.01
469E-523SR ¹	6X1/2	1-1/8	1	4	046	161.29
469E-524SR ¹	6X3/4	1-1/8	1	4	046	161.29

Made in the U.S.A.

Part Number	Size	Hole Saw Dia	Std Pk	Mstr Ctn	Prod Code	MSRP
-------------	------	--------------	--------	----------	-----------	------

Clamp-On Saddle x SR Thread Double Outlet, PVC White

(continued)

with EPDM O-ring Seal & Zinc-Plated Hardware

469E-525SR	6X1	1-1/8	1	4	046	161.29
469E-526SR ¹	6X1-1/4	2-1/4	1	4	046	161.29
469E-527SR ¹	6X1-1/2	2-1/4	1	4	046	161.29
469E-528SR	6X2	2-1/4	1	4	046	161.29
469E-529SR ¹	6X2-1/2	3	1	4	046	180.54
469E-530SR	6X3	3	1	4	046	195.25
469E-532SR	6X4	4	1	4	046	207.63
469E-573SR ¹	8X1/2	4	1	0	046	233.73
469E-574SR ¹	8X3/4	4	1	0	046	233.73
469E-575SR ¹	8X1	4	1	0	046	233.73
469E-576SR ¹	8X1-1/4	4	1	0	046	233.73
469E-577SR ¹	8X1-1/2	4	1	0	046	233.73
469E-578SR	8X2	4	1	0	046	233.73
469E-579SR ¹	8X2-1/2	4	1	0	046	257.22
469E-580SR ¹	8X3	4	1	0	046	270.07
469E-582SR	8X4	4	1	0	046	286.32
469E-585SR	8X6	6	1	0	046	317.78
469E-624SR	10X4	4	1	0	046	378.18
469E-626SR	10X6	6	1	0	046	434.77
469E-666SR	12X6	6	1	0	046	549.95

¹ Outlet-sized with Bushing



Clamp-On Saddle x SR Thread Double Outlet, PVC White

with EPDM O-ring Seal & SS Hardware

2"- 4" 235, 6" 200, 8"-12" 150 psi @ 73°F (23°C)

469SE-247SR	2X1/2	3/4	1	10	046	76.01
469SE-248SR	2X3/4	7/8	1	10	046	76.01
469SE-249SR	2X1	1-1/8	1	10	046	76.01
469SE-250SR	2X1-1/4	1-1/2	1	10	046	76.01
469SE-251SR	2X1-1/2	1-1/2	1	10	046	76.01
469SE-291SR	2-1/2X1-1/2	1-3/4	1	10	046	101.24
469SE-333SR ¹	3X1/2	7/8	1	10	046	101.24
469SE-334SR	3X3/4	7/8	1	10	046	101.24
469SE-335SR	3X1	1-1/8	1	10	046	101.24
469SE-336SR ¹	3X1-1/4	2-1/4	1	10	046	101.24
469SE-337SR ¹	3X1-1/2	2-1/4	1	10	046	101.24
469SE-338SR	3X2	2-1/4	1	10	046	101.24
469SE-415SR ¹	4X1/2	1-1/8	1	10	046	130.60
469SE-416SR ¹	4X3/4	1-1/8	1	10	046	130.60
469SE-417SR	4X1	1-1/8	1	8	046	130.60
469SE-418SR ¹	4X1-1/4	1-3/4	1	8	046	130.60
469SE-419SR	4X1-1/2	1-3/4	1	8	046	130.60
469SE-420SR	4X2	2-1/4	1	8	046	130.60
469SE-421SR ¹	4X2-1/2	3	1	4	046	135.48
469SE-422SR	4X3	3	4	0	046	148.26
469SE-523SR ¹	6X1/2	1-1/8	1	4	046	204.09
469SE-524SR ¹	6X3/4	1-1/8	1	4	046	204.09



Schedule 40 Fittings Product
Clamp-On Saddles & Wedge Clamp Saddles

Clamp-On Saddles

Part Number	Size	Hole Saw Dia	Std Pk	Mstr Ctn	Prod Code	MSRP
Clamp-On Saddle x SR Thread Double Outlet, PVC White						
(continued)						
with EPDM O-ring Seal & SS Hardware						
469SE-525SR	6X1	1-1/8	1	4	046	204.09
469SE-526SR ¹	6X1-1/4	2-1/4	1	4	046	204.09
469SE-527SR ¹	6X1-1/2	2-1/4	1	4	046	204.09
469SE-528SR	6X2	2-1/4	1	4	046	204.09
469SE-529SR ¹	6X2-1/2	3	1	4	046	218.32
469SE-530SR	6X3	3	1	4	046	230.52
469SE-532SR	6X4	4	1	4	046	244.19
469SE-573SR ¹	8X1/2	4	1	0	046	288.72
469SE-574SR ¹	8X3/4	4	1	0	046	288.72
469SE-575SR ¹	8X1	4	1	0	046	288.72
469SE-576SR ¹	8X1-1/4	4	1	0	046	288.72
469SE-577SR ¹	8X1-1/2	4	1	0	046	288.72
469SE-578SR ¹	8X2	4	1	0	046	288.72
469SE-579SR ¹	8X2-1/2	4	1	0	046	317.61
469SE-580SR ¹	8X3	4	1	0	046	333.47
469SE-582SR	8X4	4	1	0	046	347.49
469SE-585SR	8X6	6	1	0	046	392.23
469SE-624SR	10X4	4	1	0	046	466.68
469SE-626SR	10X6	6	1	0	046	536.67
469SE-664SR	12X4	4	1	0	046	583.84
469SE-666SR	12X6	6	1	0	046	678.15

¹ Outlet-sized with Bushing

Wedge Clamp Saddles



Wedge Saddle x Socket, PVC White

With EPDM O-ring Seal

* = Available Soon

466W-210 ¹	1-1/2X3/4	7/8	1	10	046	40.51
466W-211 ¹	1-1/2X1	7/8	1	10	046	40.51
466W-248 ¹	2X3/4	1-1/4	1	10	046	40.51
466W-250 ¹	2X1-1/4	1-1/4	1	10	046	40.51
466W-249 ¹	2X1	1-1/4	1	10	046	40.51
466W-251	2X1-1/2	1-1/4	1	10	046	40.51
466W-334 ¹	3X3/4	2	1	10	046	54.94
466W-335 ¹	3X1	2	1	10	046	54.94
466W-336 ¹	3X1-1/4	2	1	10	046	54.94
466W-337 ¹	3X1-1/2	2	1	10	046	54.94
466W-338	3X2	2	1	10	046	54.94
466W-416 ¹	4X3/4	2	1	10	046	70.39
466W-417 ¹	4X1	2	1	8	046	70.39
466W-418 ¹	4X1-1/4	2	1	8	046	70.39
466W-419 ¹	4X1-1/2	2	1	8	046	70.39
466W-420	4X2	2	1	8	046	70.39

Part Number	Size	Hole Saw Dia	Std Pk	Mstr Ctn	Prod Code	MSRP
-------------	------	--------------	--------	----------	-----------	------

Wedge Saddle x Socket, PVC White (continued)
With EPDM O-ring Seal

466W-524	6X3/4	3/4	1	0	046	113.62
466W-525	6X1	1	1	0	046	113.62
466W-526	6X1-1/4	1-1/4	1	0	046	113.62
466W-527	6X1-1/2	1-1/2	1	0	046	113.62
466W-528	6X2	2	1	0	046	113.62
466W-574	8X3/4	3/4	1	0	046	137.89
466W-576	8X1-1/4	1-1/4	1	0	046	137.89
466W-575	8X1	1	1	0	046	137.89
466W-577	8X1-1/2	1-1/2	1	0	046	137.89
466W-578	8X2	2	1	0	046	137.89

¹ Outlet-sized with Bushing



Wedge Saddle x SR Thread, PVC White

With EPDM O-ring Seal

* = Available Soon

467W-210SR ¹	1-1/2X3/4	7/8	1	10	046	48.93
467W-211SR ¹	1-1/2X1	7/8	1	10	046	48.93
467W-248SR ¹	2X3/4	1-1/4	1	10	046	48.93
467W-249SR ¹	2X1	1-1/4	1	10	046	48.93
467W-250SR ¹	2X1-1/4	1-1/4	1	10	046	48.93
467W-251SR	2X1-1/2	1-1/4	1	10	046	48.93
467W-334SR ¹	3X3/4	2	1	10	046	66.35
467W-335SR ¹	3X1	2	1	10	046	66.35
467W-336SR ¹	3X1-1/4	2	1	10	046	66.35
467W-337SR ¹	3X1-1/2	2	1	10	046	66.35
467W-338SR	3X2	2	1	10	046	66.35
467W-416SR ¹	4X3/4	2	1	8	046	85.02
467W-417SR ¹	4X1	2	1	8	046	85.02
467W-418SR ¹	4X1-1/4	2	1	8	046	85.02
467W-419SR ¹	4X1-1/2	2	1	8	046	85.02
467W-420SR	4X2	2	1	8	046	85.02
467W-524SR	6X3/4	3/4	1	0	046	137.23
467W-525SR	6X1	1	1	0	046	137.23
467W-526SR	6X1-1/4	1-1/4	1	0	046	137.23
467W-527SR	6X1-1/2	1-1/2	1	0	046	137.23
467W-528SR	6X2	2	1	0	046	137.23
467W-574SR	8X3/4	3/4	1	0	046	166.54
467W-575SR	8X1	1	1	0	046	166.54
467W-576SR	8X1-1/4	1-1/4	1	0	046	166.54
467W-577SR	8X1-1/2	1-1/2	1	0	046	166.54
467W-578SR	8X2	2	1	0	046	166.54

¹ Outlet-sized with Bushing



Hot-Tap Saddles

Part Number	Size	Std Pk	Mstr Ctn	Prod Code	MSRP
-------------	------	-----------	-------------	--------------	------

Hot-Tap Saddle, PVC White

EPDM Saddle x Soc (Spigot) Zinc Plated Bolts



2" - 4" 235, 6" 200, 8" 150 psi @ 73°F (23°C)

HT2-248W	2X3/4 (1)	1	5	049	59.71
HT2-251W	2X1-1/2 (2)	1	5	049	123.36
HT2-288W	2-1/2X3/4 (1)	1	5	049	63.81
HT2-291W	2-1/2x1-1/2 (2)	1	5	049	127.45
HT2-334W	3X3/4 (1)	1	5	049	73.07
HT2-337W	3X1-1/2 (2)	1	5	049	140.48
HT2-416W	4X3/4 (1)	1	0	049	84.40
HT2-419W	4X1-1/2 (2)	1	0	049	148.55
HT2-524W	6X3/4 (1)	1	0	049	94.87
HT2-527W	6X1-1/2 (2)	1	0	049	158.16
HT2-574W	8X3/4 (1)	1	0	049	104.99
HT2-577W	8X1-1/2 (2)	1	0	049	168.63

Not intended to convey or dispense water for human consumption through drinking or cooking

Hot-Tap Saddle, PVC White

EPDM Saddle x Soc (Spigot) SS316 Bolts



2" - 4" 235, 6" 200, 8" 150 psi @ 73°F (23°C)

HT2S-248W	2X3/4 (1)	1	5	049	92.98
HT2S-251W	2X1-1/2 (2)	1	5	049	191.95
HT2S-288W	2-1/2X3/4 (1)	1	5	049	99.32
HT2S-291W	2-1/2x1-1/2 (2)	1	5	049	198.29
HT2S-334W	3X3/4 (1)	1	5	049	113.75
HT2S-337W	3X1-1/2 (2)	1	5	049	218.73
HT2S-416W	4X3/4 (1)	1	5	049	131.40
HT2S-419W	4X1-1/2 (2)	1	0	049	231.22
HT2S-524W	6X3/4 (1)	1	5	049	147.54
HT2S-527W	6X1-1/2 (2)	1	0	049	245.97
HT2S-574W	8X3/4 (1)	1	0	049	162.61
HT2S-577W	8X1-1/2 (2)	1	0	049	261.43

Not intended to convey or dispense water for human consumption through drinking or cooking