

**Schedule 40 Fittings Product**  
**Short Repair Couplings & GripLoc™ Compression Couplings & GripLoc™ Compression Adapters**



**Repair Couplings**

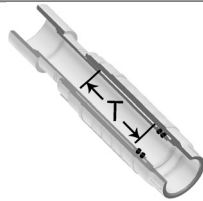
Part Number	Size	Travel - T	Std Pk	Mstr Ctn	Prod Code	MSRP
-------------	------	------------	--------	----------	-----------	------

**Repair Coupling - Spigot x Socket (continued)**

**PVC White with EPDM O-ring**

S118-60	6	6	1	0	025	189.05
---------	---	---	---	---	-----	--------

**Unit Must Be Thrust Blocked**  
**T = Repair Coupling Travel**



**Repair Coupling - Socket x Socket**

**PVC White with EPDM O-ring**

Can be used as short-stroke Expansion Joint

S119-05	1/2	3	30	0	025	5.85
S119-07	3/4	4	24	0	025	6.65
S119-10	1	4	20	0	025	7.67
S119-12	1-1/4	4	10	0	025	14.46
S119-15	1-1/2	4	16	0	025	15.75
S119-20	2	4	10	0	025	24.36
S119-25	2-1/2	6	5	0	025	35.34
S119-30	3	6	4	0	025	44.15
S119-40	4	6	2	0	025	77.26
S119-60	6	6	1	0	025	189.05

**Unit Must Be Thrust Blocked**  
**T = Repair Coupling Travel**

**Short Repair Couplings**

**Repair Coupling - Short, Spigot x Socket**

**PVC White with EPDM O-ring**

SH118-05	1/2	2	36	0	025	5.85
SH118-07	3/4	2-1/4	30	0	025	6.65
SH118-10	1	2	35	0	025	7.67
SH118-12	1-1/4	2-1/2	25	0	025	14.46
SH118-15	1-1/2	2-3/4	32	0	025	15.75
SH118-20	2	3-1/4	15	0	025	24.36

**Unit Must Be Thrust Blocked**  
**T = Repair Coupling Travel**



**Repair Coupling - Short, Socket x Socket**

**PVC White with EPDM O-ring**

SH119-05	1/2	2	40	0	025	5.85
SH119-07	3/4	2	30	0	025	6.65
SH119-10	1	2	30	0	025	7.67
SH119-12	1-1/4	2-1/2	20	0	025	14.46
SH119-15	1-1/2	2-3/4	21	0	025	15.75



Part Number	Size	Travel - T	Std Pk	Mstr Ctn	Prod Code	MSRP
-------------	------	------------	--------	----------	-----------	------

**Repair Coupling - Short, Socket x Socket (continued)**

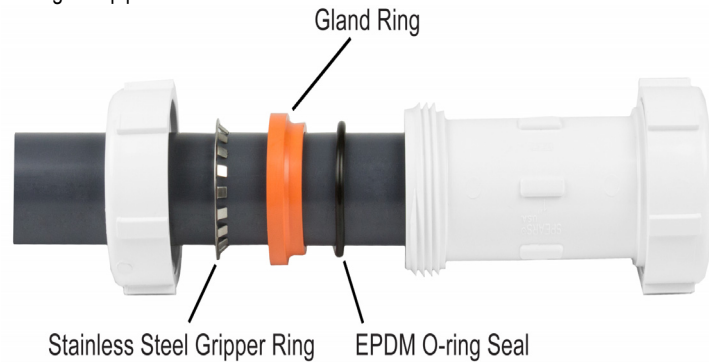
**PVC White with EPDM O-ring**

SH119-20	2	3-1/4	12	0	025	24.36
----------	---	-------	----	---	-----	-------

**Unit Must Be Thrust Blocked**  
**T = Repair Coupling Travel**

**GripLoc™ Compression Couplings**

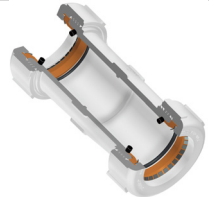
Tightening nut compresses special stainless steel Gripper Ring to firmly grip pipe and prevent potential pull-out. Compressed Gland Ring ensures positive O-ring seal against pipe.



Part Number	Size	Std Pk	Mstr Ctn	Prod Code	MSRP
-------------	------	--------	----------	-----------	------

**GripLoc™ Compression Couplings**

**WARNING: DO NOT INSERT FINGERS**  
**For Cold Water Only - EPDM Gasket**  
**1/2" - 2" Pressure Rated to 235 psi**  
**3" - 4" Pressure Rated to 150 psi**



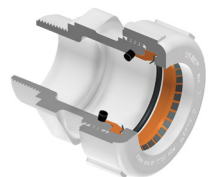
Hand Tighten ONLY - No Nut Wrenches Required

S112-05	1/2	28	0	131	19.34
S112-07	3/4	24	0	131	21.37
S112-10	1	20	0	131	26.82
S112-12	1-1/4	1	10	131	32.71
S112-15	1-1/2	1	16	131	39.61
S112-20	2	1	12	131	46.68
S112-30	3	1	4	131	80.14
S112-40	4	1	4	131	90.61

**GripLoc™ Compression Adapters**

**GripLoc™ Compression Male Adapter**

**WARNING: DO NOT INSERT FINGERS**  
**For Cold Water Only - Mipt x EPDM**  
**GripLoc™ Gasket**



Hand Tighten ONLY - No Nut Wrenches Required

S135-05	1/2	1	25	131	11.59
S135-07	3/4	1	25	131	13.60



Schedule 40 Fittings Product

**GripLoc™ Compression Adapters & GripLoc™ Coupling & GripLoc™ Cap**

**GripLoc™ Compression Adapters**

Part Number	Size	Std Pk	Mstr Ctn	Prod Code	MSRP
-------------	------	--------	----------	-----------	------

**GripLoc™ Compression Male Adapter (continued)**

**WARNING: DO NOT INSERT FINGERS**

**For Cold Water Only - Mipt x EPDM GripLoc™ Gasket**

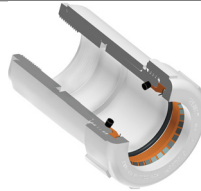
S135-10	1	1	25	131	15.54
S135-12	1-1/4	1	20	131	17.93
S135-15	1-1/2	1	25	131	20.42
S135-20	2	1	25	131	25.11

**GripLoc™ Compression Female Adapter**

**WARNING: DO NOT INSERT FINGERS**

**For Cold Water Only - Fipt x EPDM**

**GripLoc™ Gasket**



Hand Tighten ONLY - No Nut Wrenches Required

S136-05	1/2	1	28	131	18.72
S136-07	3/4	1	24	131	20.89
S136-10	1	1	20	131	24.36
S136-12	1-1/4	1	20	131	33.49
S136-15	1-1/2	1	16	131	42.41
S136-20	2	1	10	131	52.11

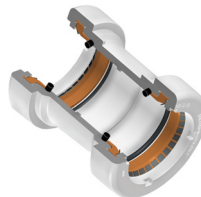
**GripLoc™ Coupling**

**GripLoc™ Coupling**

**WARNING: DO NOT INSERT FINGERS**

**For Cold Water Only - EPDM Gasket**

**Pressure Rated to 235 psi @ 73°F**



Uses No Solvent Cement

GL429-005	1/2	1	40	131	13.54
GL429-007	3/4	1	36	131	17.71
GL429-010	1	1	20	131	18.23
GL429-012	1-1/4	1	15	131	21.67
GL429-015	1-1/2	1	15	131	21.67
GL429-020	2	1	10	131	22.50

**GripLoc™ IPS Size Release Tool**

**For Removal of GripLoc™ Fittings**



GLIPSRT-005	1/2	1	50	299	5.00
GLIPSRT-007	3/4	1	50	299	5.00
GLIPSRT-010	1	1	50	299	5.00

**GripLoc™ Cap**

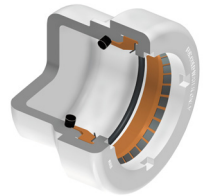
Part Number	Size	Std Pk	Mstr Ctn	Prod Code	MSRP
-------------	------	--------	----------	-----------	------

**GripLoc™ Cap**

**WARNING: DO NOT INSERT FINGERS**

**For Cold Water Only - EPDM Gasket**

**Pressure Rated to 235 psi @ 73°F**



Uses No Solvent Cement

GL447-005	1/2	1	50	131	12.44
GL447-007	3/4	10	50	131	16.13
GL447-010	1	1	50	131	16.93
GL447-012	1-1/4	10	100	131	22.26
GL447-015	1-1/2	1	25	131	25.33
GL447-020	2	1	25	131	28.40