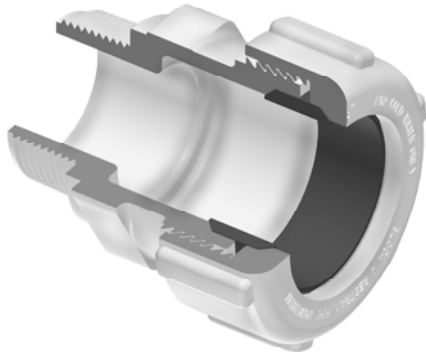




Schedule 40 Fittings Product
Compression Male Adapters & Repair Couplings

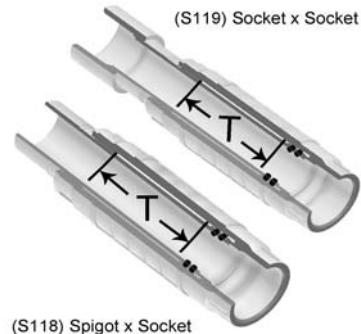
Compression Male Adapters



- Quickly Adapts Pipe to MIPT Thread
- Easy-Thread Compression Nut
- 200 psi Pressure Rating
- NSF® Certified for Potable Water Use

Uses same Nut Wrench sets available for Compression Couplings

Repair Couplings



- Multi-function Telescoping Design
- Regular and Short configurations
- Socket x Socket Configuration for Pipe Repair or Use as a Short-Stroke Expansion Joint
- Spigot x Socket Configuration for Replacing Damaged Fittings
- Both Configurations can be Easily Modified for Opposite Use
- Double O-ring Seal in EPDM
- 1/2" - 2" Pressure Rated to 235 PSI @ 73°F (23°C)
- 2-1/2" - 4" Pressure Rated to 200 PSI @ 73°F (23°C)
- 6" Pressure Rated to 150 PSI @ 73°F (23°C)
- NSF® Certified for Potable Water Use

Compression Male Adapters, PVC

Part Number	Size	Std Pk	Mstr Ctn	Prod Code	MSRP
Elastomer Gasket					
Uses Regular Compression Coupling Nut Wrenches					
S130-05	1/2	25	150	024	3.48
S130-07	3/4	25	200	024	4.20
S130-10	1	25	0	024	5.33
S130-12	1-1/4	25	0	024	8.19
S130-15	1-1/2	25	0	024	8.40
S130-20	2	25	0	024	10.47

Versatile Repair Capability

Spears® Repair Couplings provide a variety of system repair and alteration solutions. Use Socket x Socket configurations for quick pipe damage repair - can also be used as a short-stroke expansion joint to compensate for thermal expansion & contraction. Spigot x Socket configurations are excellent for lateral and riser add-ons, damaged fitting replacement, or for installing valves in existing piping systems. Order the wrong configuration? Simply cut coupling from Socket shaft end to function as a spigot or add a coupling to Spigot shaft end for Socket connections.

Part Number	Size	Travel - T	Std Pk	Mstr Ctn	Prod Code	MSRP
-------------	------	------------	--------	----------	-----------	------

Repair Coupling - Spigot x Socket

PVC White with EPDM O-ring



Can be used as short-stroke Expansion Joint

S118-05	1/2	3	25	0	025	6.16
S118-07	3/4	4	30	0	025	7.00
S118-10	1	4	15	0	025	8.07
S118-12	1-1/4	4	25	0	025	15.22
S118-15	1-1/2	4	25	0	025	16.58
S118-20	2	4	12	0	025	25.64
S118-25	2-1/2	6	5	0	025	37.20
S118-30	3	6	4	0	025	46.47
S118-40	4	6	2	0	025	81.33