



Compression & Repair Fittings



PRODUCT

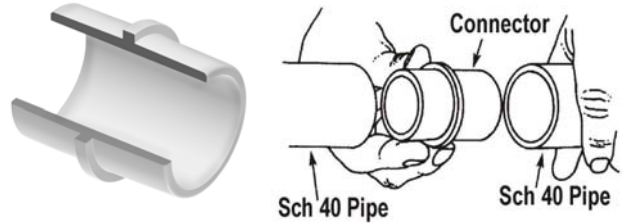
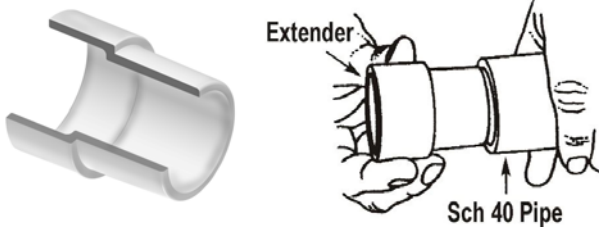
Contact Spears® for any Information not found.



Schedule 40 Repair Fittings & Fabricated Repair Couplings

Schedule 40 Repair Fittings

Schedule 40 Pipe Repair Fittings
Allows Difficult Broken Pipe Repair To Be Made Easily



Pipe Inside Connectors, Schedule 40

Part Number	Size	Std Pk	Mstr Ctn	Prod Code	MSRP
Pipe I.D. Spigot x Pipe I.D. Spigot					
S0302-10	1	50	300	894	3.77
S0302-15	1-1/2	50	0	894	5.14
S0302-20	2	20	0	894	5.69
S0302-30	3	25	0	894	17.87
S0302-40	4	5	0	894	21.22

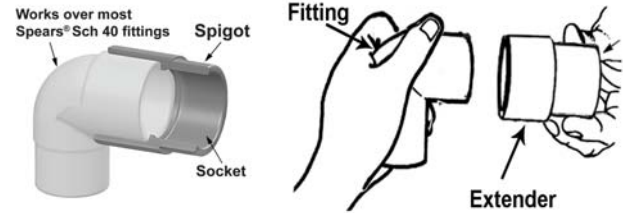
Pipe Extenders, Schedule 40

Part Number	Size	Std Pk	Mstr Ctn	Prod Code	MSRP
-------------	------	--------	----------	-----------	------

Pipe O.D. Spigot x Pipe I.D. Spigot

* Fabricated, Non-Pressure Rated

S0301-05	1/2	100	600	894	1.81
S0301-07	3/4	50	300	894	2.97
S0301-10	1	50	200	894	3.77
S0301-12	1-1/4	50	0	894	4.51
S0301-15	1-1/2	50	0	894	5.14
S0301-20	2	25	0	894	5.69
S0301-25	2-1/2	25	0	894	6.78
S0301-30	3	25	0	894	15.85
S0301-40	4	20	0	894	18.68
S0301-60F	6	1	10	392	73.29
S0301-80F	8	1	2	392	147.24
S0301-100F	10	1	0	392	228.49
S0301-120F	12	1	0	392	331.34



Fitting Extenders, Schedule 40

Part Number	Size	Std Pk	Mstr Ctn	Prod Code	MSRP
-------------	------	--------	----------	-----------	------

Spigot (Socket) x Socket O.D.

Spigot End also functions as next size down Socket

S0303-15	1-1/2	25	0	894	7.15
S0303-20	2	25	0	894	8.85

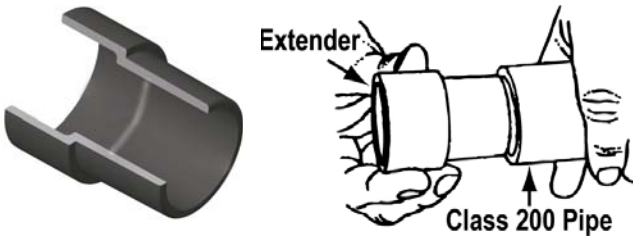
Fabricated Repair Couplings

Part Number	Size	Gasket to Gasket - L1	Std Pk	Mstr Ctn	Prod Code	MSRP
-------------	------	-----------------------	--------	----------	-----------	------

Repair Coupling, Schedule 40 Fabricated

Gasket x Gasket

428-020F	2	6	1	10	047	69.04
428-030F	3	11- 3/4	1	12	047	89.45
428-040F	4	15	1	4	047	103.58
428-060F	6	18-1/4	1	3	047	140.41
428-080F	8	21-1/2	1	2	047	192.56
428-100F	10	22- 3/8	1	0	047	288.46
428-120F	12	22- 3/8	1	0	047	375.59
428-140F	14	21-1/2	1	0	047	735.02
428-160F	16	24	1	0	047	1028.56
428-180F	18	22-5/8	1	0	047	1583.12
428-200F	20	23-1/2	1	0	047	1889.52
428-240F	24	23-1/2	1	0	047	2637.87



Pipe Extenders, Class 200

Part Number	Size	Std Pk	Mstr Ctn	Prod Code	MSRP
-------------	------	--------	----------	-----------	------

Pipe O.D. Spigot x Pipe I.D. Spigot

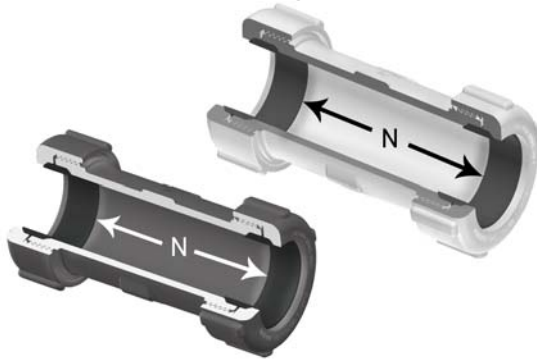
Fits Class 200 Pipe I.D.

S0304-10	1	25	150	894	4.17
S0304-12	1-1/4	10	120	894	4.57
S0304-15	1-1/2	10	120	894	4.97
S0304-20	2	25	0	894	5.56

Schedule 40 Fittings Product
Compression Couplings & Nut Wrenches



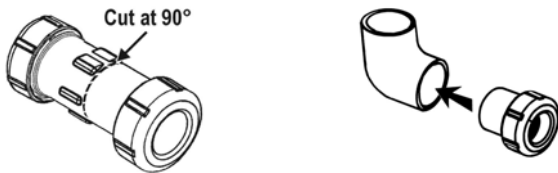
Compression Couplings & Nut Wrenches



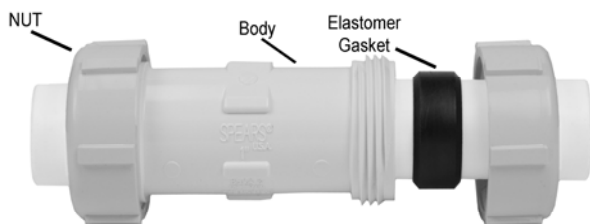
- Designed for Quick Connections, System Modifications or Repairs
- Completely Redesigned for Improved Versatility
- PVC White plus New Industrial PVC Gray
- Easy-Thread Compression Nut
- New Spigot Conversion Capability
- Full Service Pressure Rating
 1/2" - 2-1/2" = 200psi, 3" - 6" = 150psi
- NSF® Certified for Potable Water Use

Option: Convert Fittings to Compression Outlet

Socket-type fittings 3/4" through 3" can be easily converted to compression outlet sizes 1/2" through 2-1/2" by simply cutting the Compression Coupling at the center holding ribs and solvent welding the spigot body into a fitting socket.



Compression Coupling Size (in.)	Body Spigot Size (in.)
1/2	3/4
3/4	1
1	1-1/4
1-1/4	1-1/2
1-1/2	2
2	2-1/2
2-1/2	3



Compression Coupling, PVC White

Part Number	Size	Gasket to Gasket - N	Std Pk	Mstr Ctn	Prod Code	MSRP
Elastomer Gasket						
S110-05	1/2	3-3/8	28	0	024	4.27
S110-07	3/4	3-9/16	24	0	024	5.78
S110-10	1	3-3/4	20	0	024	7.51
S110-12	1-1/4	4-1/8	10	0	024	11.51
S110-15	1-1/2	4-5/8	16	0	024	11.87
S110-20	2	5-1/16	12	0	024	15.44
S110-25	2-1/2	5-7/8	6	0	024	29.04
S110-30	3	6-3/16	4	0	024	38.03
S110-40	4	7-3/8	4	0	024	62.54
S110-60	6	7-9/16	1	0	024	142.23

N = Gasket to Gasket

Compression Coupling, PVC Gray

Part Number	Size	Gasket to Gasket - N	Std Pk	Mstr Ctn	Prod Code	MSRP
Elastomer Gasket						
S110-05G	1/2	3-3/8	28	0	024	4.57
S110-07G	3/4	3-9/16	24	0	024	6.83
S110-10G	1	3-3/4	20	0	024	8.82
S110-12G	1-1/4	4-1/8	10	0	024	13.60
S110-15G	1-1/2	4-5/8	16	0	024	14.04
S110-20G	2	5-1/16	12	0	024	18.22
S110-25G	2-1/2	5-7/8	6	0	024	34.31
S110-30G	3	6-3/16	4	0	024	44.85
S110-40G	4	7-3/8	4	0	024	73.80
S110-60G	6	7-9/16	1	0	024	167.82

N = Gasket to Gasket

Compression Coupling Nut Wrench Set

Part Number	Size	Std Pk	Mstr Ctn	Prod Code	MSRP
CCW-000	Set	1	25	299	110.45
Complete Set of Wrenches, Sizes 1/2 - 3					

Compression Coupling Nut Wrenches

Fits all Spears® Compression Fittings



CCW-005	1/2	1	50	299	13.22
CCW-007	3/4	1	50	299	13.45
CCW-010	1	1	50	299	14.02
CCW-012	1-1/4	1	50	299	15.86
CCW-015	1-1/2	1	50	299	17.11
CCW-020 ¹	2	1	50	299	19.12
CCW-030 ²	3	1	25	299	23.52
CCW-060	6	8	0	299	35.37

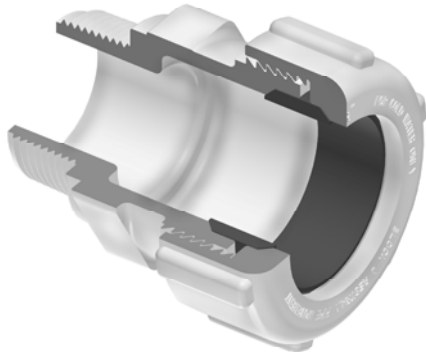
¹ CCW-20 - Wrench also fits 2-1/2" Coupling Body

² CCW-30 - Wrench also fits 4" Coupling Body



Schedule 40 Fittings Product
Compression Male Adapters & Repair Couplings

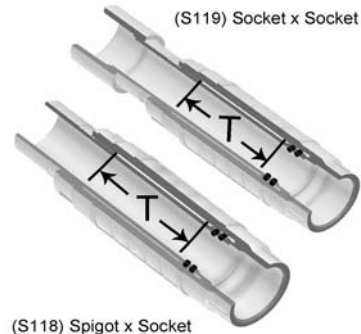
Compression Male Adapters



- Quickly Adapts Pipe to MIPT Thread
- Easy-Thread Compression Nut
- 200 psi Pressure Rating
- NSF® Certified for Potable Water Use

Uses same Nut Wrench sets available for Compression Couplings

Repair Couplings



- Multi-function Telescoping Design
- Regular and Short configurations
- Socket x Socket Configuration for Pipe Repair or Use as a Short-Stroke Expansion Joint
- Spigot x Socket Configuration for Replacing Damaged Fittings
- Both Configurations can be Easily Modified for Opposite Use
- Double O-ring Seal in EPDM
- 1/2" - 2" Pressure Rated to 235 PSI @ 73°F (23°C)
- 2-1/2" - 4" Pressure Rated to 200 PSI @ 73°F (23°C)
- 6" Pressure Rated to 150 PSI @ 73°F (23°C)
- NSF® Certified for Potable Water Use

Compression Male Adapters, PVC

Part Number	Size	Std Pk	Mstr Ctn	Prod Code	MSRP
Elastomer Gasket					
Uses Regular Compression Coupling Nut Wrenches					
S130-05	1/2	25	150	024	3.48
S130-07	3/4	25	200	024	4.20
S130-10	1	25	0	024	5.33
S130-12	1-1/4	25	0	024	8.19
S130-15	1-1/2	25	0	024	8.40
S130-20	2	25	0	024	10.47

Versatile Repair Capability

Spears® Repair Couplings provide a variety of system repair and alteration solutions. Use Socket x Socket configurations for quick pipe damage repair - can also be used as a short-stroke expansion joint to compensate for thermal expansion & contraction. Spigot x Socket configurations are excellent for lateral and riser add-ons, damaged fitting replacement, or for installing valves in existing piping systems. Order the wrong configuration? Simply cut coupling from Socket shaft end to function as a spigot or add a coupling to Spigot shaft end for Socket connections.

Part Number	Size	Travel - T	Std Pk	Mstr Ctn	Prod Code	MSRP
-------------	------	------------	--------	----------	-----------	------

Repair Coupling - Spigot x Socket

PVC White with EPDM O-ring



Can be used as short-stroke Expansion Joint

S118-05	1/2	3	25	0	025	6.16
S118-07	3/4	4	30	0	025	7.00
S118-10	1	4	15	0	025	8.07
S118-12	1-1/4	4	25	0	025	15.22
S118-15	1-1/2	4	25	0	025	16.58
S118-20	2	4	12	0	025	25.64
S118-25	2-1/2	6	5	0	025	37.20
S118-30	3	6	4	0	025	46.47
S118-40	4	6	2	0	025	81.33



Repair Couplings

Part Number	Size	Travel - T	Std Pk	Mstr Ctn	Prod Code	MSRP
Repair Coupling - Spigot x Socket (continued) PVC White with EPDM O-ring						
S118-60	6	6	1	0	025	199.00
Unit Must Be Thrust Blocked T = Repair Coupling Travel						



Repair Coupling - Socket x Socket

PVC White with EPDM O-ring

Can be used as short-stroke Expansion Joint

S119-05	1/2	3	30	0	025	6.16
S119-07	3/4	4	24	0	025	7.00
S119-10	1	4	20	0	025	8.07
S119-12	1-1/4	4	10	0	025	15.22
S119-15	1-1/2	4	16	0	025	16.58
S119-20	2	4	10	0	025	25.64
S119-25	2-1/2	6	5	0	025	37.20
S119-30	3	6	4	0	025	46.47
S119-40	4	6	2	0	025	81.33
S119-60	6	6	1	0	025	199.00

Unit Must Be Thrust Blocked
T = Repair Coupling Travel

Short Repair Couplings

Repair Coupling - Short, Spigot x Socket

PVC White with EPDM O-ring

SH118-05	1/2	2	36	0	025	6.16
SH118-07	3/4	2-1/4	30	0	025	7.00
SH118-10	1	2	35	0	025	8.07
SH118-12	1-1/4	2-1/2	25	0	025	15.22
SH118-15	1-1/2	2-3/4	32	0	025	16.58
SH118-20	2	3-1/4	15	0	025	25.64

Unit Must Be Thrust Blocked
T = Repair Coupling Travel

Repair Coupling - Short, Socket x Socket

PVC White with EPDM O-ring

SH119-05	1/2	2	40	0	025	6.16
SH119-07	3/4	2	30	0	025	7.00
SH119-10	1	2	30	0	025	8.07
SH119-12	1-1/4	2-1/2	20	0	025	15.22
SH119-15	1-1/2	2-3/4	21	0	025	16.58

Part Number	Size	Travel - T	Std Pk	Mstr Ctn	Prod Code	MSRP
-------------	------	------------	--------	----------	-----------	------

Repair Coupling - Short, Socket x Socket (continued)

PVC White with EPDM O-ring

SH119-20	2	3-1/4	12	0	025	25.64
----------	---	-------	----	---	-----	-------

Unit Must Be Thrust Blocked
T = Repair Coupling Travel

GripLoc™ Compression Couplings

Tightening nut compresses special stainless steel Gripper Ring to firmly grip pipe and prevent potential pull-out. Compressed Gland Ring ensures positive O-ring seal against pipe.



Part Number	Size	Std Pk	Mstr Ctn	Prod Code	MSRP
-------------	------	--------	----------	-----------	------

GripLoc™ Compression Couplings

WARNING: DO NOT INSERT FINGERS
For Cold Water Only - EPDM Gasket
1/2" - 2" Pressure Rated to 235 psi
3" - 4" Pressure Rated to 150 psi



Hand Tighten ONLY - No Nut Wrenches Required

S112-05	1/2	28	0	131	20.36
S112-07	3/4	1	24	131	22.49
S112-10	1	1	20	131	28.23
S112-12	1-1/4	1	10	131	34.43
S112-15	1-1/2	1	16	131	41.69
S112-20	2	1	12	131	49.14
S112-30	3	1	4	131	84.36
S112-40	4	1	4	131	95.38

GripLoc™ Compression Adapters

GripLoc™ Compression Male Adapter

WARNING: DO NOT INSERT FINGERS
For Cold Water Only - Mipt x EPDM
GripLoc™ Gasket



Hand Tighten ONLY - No Nut Wrenches Required

S135-05	1/2	1	25	131	12.20
S135-07	3/4	1	25	131	14.32

**GripLoc™ Compression Adapters & GripLoc™ Coupling & GripLoc™ Cap****GripLoc™ Compression Adapters**

Part Number	Size	Std Pk	Mstr Ctn	Prod Code	MSRP
GripLoc™ Compression Male Adapter (continued)					
WARNING: DO NOT INSERT FINGERS					
For Cold Water Only - Mipt x EPDM GripLoc™ Gasket					
S135-10	1	1	25	131	16.36
S135-12	1-1/4	1	20	131	18.87
S135-15	1-1/2	1	25	131	21.49
S135-20	2	1	25	131	26.43

GripLoc™ Compression Female Adapter

WARNING: DO NOT INSERT FINGERS
For Cold Water Only - Fipt x EPDM
GripLoc™ Gasket



Hand Tighten ONLY - No Nut Wrenches Required

S136-05	1/2	1	28	131	19.71
S136-07	3/4	1	24	131	21.99
S136-10	1	1	20	131	25.64
S136-12	1-1/4	1	20	131	35.25
S136-15	1-1/2	1	16	131	44.64
S136-20	2	1	10	131	54.85

GripLoc™ Coupling**GripLoc™ Coupling**

WARNING: DO NOT INSERT FINGERS
For Cold Water Only - EPDM Gasket
Pressure Rated to 235 psi @ 73°F



Uses No Solvent Cement

GL429-005	1/2	1	40	131	14.25
GL429-007	3/4	1	36	131	18.64
GL429-010	1	1	20	131	19.19
GL429-012	1-1/4	1	15	131	22.81
GL429-015	1-1/2	1	15	131	22.81
GL429-020	2	1	10	131	23.68

GripLoc™ IPS Size Release Tool

For Removal of GripLoc™ Fittings



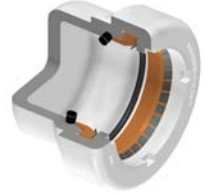
GLIPSRT-005	1/2	1	50	299	5.26
GLIPSRT-007	3/4	1	50	299	5.26
GLIPSRT-010	1	1	50	299	5.26

GripLoc™ Cap

Part Number	Size	Std Pk	Mstr Ctn	Prod Code	MSRP
-------------	------	--------	----------	-----------	------

GripLoc™ Cap

WARNING: DO NOT INSERT FINGERS
For Cold Water Only - EPDM Gasket
Pressure Rated to 235 psi @ 73°F



Uses No Solvent Cement

GL447-005	1/2	1	50	131	13.09
GL447-007	3/4	10	50	131	16.98
GL447-010	1	1	50	131	17.82
GL447-012	1-1/4	1	25	131	23.43
GL447-015	1-1/2	1	25	131	26.66
GL447-020	2	1	25	131	29.89