

Schedule 80 PVC Product
Clamp-On Saddles & Hot-Tap Saddles



Clamp-On Saddles

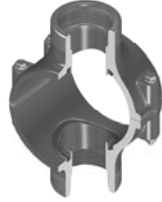
Part Number	Size	Hole Saw Dia	Std Pk	Mstr Ctn	Prod Code	MSRP
-------------	------	--------------	--------	----------	-----------	------

Clamp-On Saddle x SR Thread Double Outlet PVC Gray

with EPDM O-ring Seal & SS Hardware

2"- 4" 235, 6" 200, 8"-12" 150 psi @ 73°F (23°C)

869S-247SR	2X1/2	3/4	1	10	086	74.89
869S-248SR	2X3/4	7/8	1	10	086	74.89
869S-249SR	2X1	1-1/8	1	10	086	74.89
869S-250SR	2X1-1/4	1-1/2	1	10	086	74.89
869S-251SR	2X1-1/2	1-1/2	1	10	086	74.89
869S-291SR	2-1/2X1-1/2	1-3/4	1	10	086	99.84
869S-333SR ¹	3X1/2	7/8	1	10	086	99.84
869S-334SR	3X3/4	7/8	1	10	086	99.84
869S-335SR	3X1	1-1/8	1	10	086	99.84
869S-336SR ¹	3X1-1/4	2-1/4	1	10	086	99.84
869S-337SR ¹	3X1-1/2	2-1/4	1	10	086	99.84
869S-338SR	3X2	2-1/4	1	10	086	99.84
869S-415SR ¹	4X1/2	1-1/8	1	10	086	125.07
869S-416SR ¹	4X3/4	1-1/8	1	10	086	125.07
869S-417SR	4X1	1-1/8	1	8	086	125.07
869S-418SR ¹	4X1-1/4	1-3/4	1	8	086	125.07
869S-419SR	4X1-1/2	1-3/4	1	8	086	125.07
869S-420SR	4X2	2-1/4	1	8	086	125.07
869S-421SR ¹	4X2-1/2	3	1	4	086	133.62
869S-422SR	4X3	3	1	4	086	139.60
869S-523SR ¹	6X1/2	1-1/8	1	4	086	208.38
869S-524SR ¹	6X3/4	1-1/8	1	4	086	208.38
869S-525SR	6X1	1-1/8	1	4	086	208.38
869S-526SR ¹	6X1-1/4	2-1/4	1	4	086	208.38
869S-527SR ¹	6X1-1/2	2-1/4	1	4	086	208.38
869S-528SR	6X2	2-1/4	1	4	086	208.38
869S-529SR ¹	6X2-1/2	3	1	4	086	218.67
869S-530SR	6X3	3	1	4	086	227.64
869S-532SR	6X4	4	1	4	086	234.87
869S-573SR ¹	8X1/2	4	1	0	086	358.61
869S-574SR ¹	8X3/4	4	1	0	086	358.61
869S-575SR ¹	8X1	4	1	0	086	358.61
869S-576SR ¹	8X1-1/4	4	1	0	086	358.61
869S-577SR ¹	8X1-1/2	4	1	0	086	358.61
869S-578SR ¹	8X2	4	1	0	086	358.61
869S-579SR ¹	8X2-1/2	4	1	0	086	376.43
869S-580SR ¹	8X3	4	1	0	086	399.13
869S-582SR	8X4	4	1	0	086	423.14
869S-585SR	8X6	6	1	0	086	464.48
869S-624SR	10X4	4	1	0	086	408.82
869S-626SR	10X6	6	1	0	086	579.06
869S-664SR	12X4	4	1	0	086	631.27
869S-666SR	12X6	6	1	0	086	732.19



Hot-Tap Saddles

Part Number	Size	Std Pk	Mstr Ctn	Prod Code	MSRP
-------------	------	--------	----------	-----------	------

Hot-Tap Saddle PVC Gray

EPDM Saddle x Socket (Spigot) Zinc Plated Bolts

2"- 4" 235, 6" 200, 8" 150 psi @ 73°F (23°C)

HT2-248	2X3/4 (1)	1	5	049	56.72
HT2-251	2X1-1/2 (2)	1	5	049	117.19
HT2-288	2-1/2X3/4 (1)	1	5	049	60.62
HT2-291	2-1/2X1-1/2 (2)	1	5	049	121.08
HT2-334	3X3/4 (1)	1	5	049	69.42
HT2-337	3X1-1/2 (2)	1	5	049	133.46
HT2-416	4X3/4 (1)	1	5	049	80.18
HT2-419	4X1-1/2 (2)	1	0	049	141.12
HT2-524	6X3/4 (1)	1	5	049	90.13
HT2-527	6X1-1/2 (2)	1	0	049	150.25
HT2-574	8X3/4 (1)	1	0	049	99.74
HT2-577	8X1-1/2 (2)	1	0	049	160.20

Not intended to convey or dispense water for human consumption through drinking or cooking



Hot-Tap Saddle PVC Gray

EPDM Saddle x Socket (Spigot) SS316 Bolts

2"- 4" 235, 6" 200, 8" 150 psi @ 73°F (23°C)

HT2S-248	2X3/4 (1)	1	5	049	88.33
HT2S-251	2X1-1/2 (2)	1	5	049	182.35
HT2S-288	2-1/2X3/4 (1)	1	5	049	94.35
HT2S-291	2-1/2X1-1/2 (2)	1	5	049	188.38
HT2S-334	3X3/4 (1)	1	5	049	108.06
HT2S-337	3X1-1/2 (2)	1	5	049	207.79
HT2S-416	4X3/4 (1)	1	5	049	124.83
HT2S-419	4X1-1/2 (2)	1	0	049	219.66
HT2S-524	6X3/4 (1)	1	5	049	140.16
HT2S-527	6X1-1/2 (2)	1	0	049	233.67
HT2S-574	8X3/4 (1)	1	0	049	154.48
HT2S-577	8X1-1/2 (2)	1	0	049	248.36

Not intended to convey or dispense water for human consumption through drinking or cooking



¹ Outlet-sized with Bushing



Schedule 80 PVC Product
Hot-Tap Saddles

Hot-Tap Saddles

Part Number	Size	Std Pk	Mstr Ctn	Prod Code	MSRP
-------------	------	--------	----------	-----------	------

Hot-Tap Saddle PVC Gray

FKM Saddle x Socket (Spigot) Zinc Plated Bolts



2"- 4" 235, 6" 200, 8" 150 psi @ 73°F (23°C)

HT3-248	2X3/4 (1)	1	5	049	61.61
HT3-251	2X1-1/2 (2)	1	5	049	127.13
HT3-288	2-1/2X3/4 (1)	1	5	049	65.84
HT3-291	2-1/2X1-1/2 (2)	1	5	049	131.36
HT3-334	3X3/4 (1)	1	5	049	75.28
HT3-337	3X1-1/2 (2)	1	5	049	145.03
HT3-416	4X3/4 (1)	1	5	049	87.02
HT3-419	4X1-1/2 (2)	1	0	049	151.29
HT3-524	6X3/4 (1)	1	5	049	97.78
HT3-527	6X1-1/2 (2)	1	0	049	162.64
HT3-574	8X3/4 (1)	1	0	049	108.68
HT3-577	8X1-1/2 (2)	1	0	049	192.61

Not intended to convey or dispense water for human consumption through drinking or cooking

Hot-Tap Saddle PVC Gray

FKM Saddle x Socket (Spigot) SS316 Bolts



2"- 4" 235, 6" 200, 8" 150 psi @ 73°F (23°C)

HT3S-248	2X3/4 (1)	1	5	049	95.81
HT3S-251	2X1-1/2 (2)	1	5	049	197.85
HT3S-288	2-1/2X3/4 (1)	1	5	049	102.66
HT3S-291	2-1/2X1-1/2 (2)	1	5	049	204.51
HT3S-334	3X3/4 (1)	1	5	049	117.19
HT3S-337	3X1-1/2 (2)	1	5	049	225.69
HT3S-416	4X3/4 (1)	1	5	049	135.25
HT3S-419	4X1-1/2 (2)	1	0	049	238.41
HT3S-524	6X3/4 (1)	1	5	049	152.21
HT3S-527	6X1-1/2 (2)	1	0	049	253.26
HT3S-574	8X3/4 (1)	1	0	049	168.35
HT3S-577	8X1-1/2 (2)	1	0	049	268.43

Not intended to convey or dispense water for human consumption through drinking or cooking

Part Number	Size	Std Pk	Mstr Ctn	Prod Code	MSRP
-------------	------	--------	----------	-----------	------

Hot-Tap Saddle PVC Gray

EPDM with Stainless Steel Cutter & Bolts



2"- 4" 235, 6" 200, 8" 150 psi @ 73°F (23°C)

HTS2S-248	2X3/4 (1)	1	5	049	423.12
HTS2S-251	2X1-1/2 (2)	1	5	049	637.68
HTS2S-288	2-1/2X3/4 (1)	1	5	049	452.73
HTS2S-291	2-1/2X1-1/2 (2)	1	5	049	640.01
HTS2S-334	3X3/4 (1)	1	5	049	428.51
HTS2S-337	3X1-1/2 (2)	1	5	049	649.99
HTS2S-416	4X3/4 (1)	1	5	049	464.15
HTS2S-419	4X1-1/2 (2)	1	0	049	668.66
HTS2S-524	6X3/4 (1))	1	5	049	512.78
HTS2S-527	6X1-1/2 (2)	1	0	049	735.31
HTS2S-574	8X3/4 (1)	1	0	049	731.53
HTS2S-577	8X1-1/2 (2)	1	0	049	868.69

Lead Free

Hot-Tap Saddle PVC Gray

FKM with Stainless Steel Cutter & Bolts



2"- 4" 235, 6" 200, 8" 150 psi @ 73°F (23°C)

HTS3S-248	2X3/4 (1)	1	5	049	429.82
HTS3S-251	2X1-1/2 (2)	1	5	049	649.54
HTS3S-288	2-1/2X3/4 (1)	1	5	049	459.94
HTS3S-291	2-1/2X1-1/2 (2)	1	5	049	651.80
HTS3S-334	3X3/4 (1)	1	5	049	433.73
HTS3S-337	3X1-1/2 (2)	1	5	049	665.09
HTS3S-416	4X3/4 (1)	1	5	049	473.39
HTS3S-419	4X1-1/2 (2)	1	0	049	687.16
HTS3S-524	6X3/4 (1)	1	5	049	521.97
HTS3S-527	6X1-1/2 (2)	1	0	049	752.99
HTS3S-574	8X3/4 (1)	1	0	049	738.94
HTS3S-577	8X1-1/2(2)	1	0	049	885.08

Lead Free