



Schedule 80 PVC Product
Glue-On Saddles

Glue-On Saddles

Part Number	Size	Std Pk	Mstr Ctn	Prod Code	MSRP
-------------	------	--------	----------	-----------	------

Saddle

IPS O.D. x Socket Schedule 80



Non Pressure Rated

3963-528	6X2	1	6	400	60.22
3963-530	6X3	1	10	400	60.76
3963-532	6X4	1	8	400	61.28
3963-578	8X2	1	10	400	85.07
3963-580	8X3	1	8	400	86.11
3963-582	8X4	1	5	400	87.03
3963-585	8X6	1	5	400	89.06
3963-621	10X2	1	8	400	78.77
3963-623	10X3	1	5	400	79.88
3963-624	10X4	1	8	400	80.22
3963-626	10X6	1	5	400	93.28
3963-628	10X8	1	5	400	149.49
3963-661	12X2	1	10	400	93.06
3963-663	12X3	1	8	400	93.61
3963-664	12X4	1	10	400	94.40
3963-666	12X6	1	5	400	109.48
3963-668	12X8	1	2	400	172.28
3963-670	12X10	1	4	400	210.86
3963-693	14X3	1	8	400	115.68
3963-694	14X4	1	5	400	116.24
3963-696	14X6	1	8	400	132.32
3963-698	14X8	1	4	400	202.85
3963-700	14X10	1	3	400	259.77
3963-702	14X12	1	4	400	286.83
3963-751	16X2	1	8	400	120.69
3963-753	16X3	1	8	400	121.74
3963-754	16X4	1	10	400	122.43
3963-756	16X6	1	8	400	139.54
3963-758	16X8	1	3	400	208.08
3963-760	16X10	1	0	400	264.96
3963-762	16X12	1	0	400	294.28
3963-764	16X14	1	0	400	306.66
3963-781	18X2	1	8	400	177.31
3963-783	18X3	1	4	400	178.38
3963-784	18X4	1	5	400	179.19
3963-786	18X6	1	5	400	189.65
3963-788	18X8	1	5	400	278.65
3963-790	18X10	1	0	400	308.91
3963-792	18X12	1	0	400	440.55
3963-794	18X14	1	0	400	479.48
3963-796	18X16	1	0	400	627.41
3963-811	20X2	1	12	400	179.33
3963-813	20X3	1	4	400	179.75
3963-814	20X4	1	6	400	181.91
3963-816	20X6	1	0	400	190.82
3963-818	20X8	1	5	400	275.64

Part Number	Size	Std Pk	Mstr Ctn	Prod Code	MSRP
-------------	------	--------	----------	-----------	------

Saddle (continued)

IPS O.D. x Socket Schedule 80

3963-820	20X10	1	0	400	305.68
3963-822	20X12	1	0	400	436.02
3963-824	20X14	1	0	400	475.54
3963-826	20X16	1	0	400	623.04
3963-828	20X18	1	0	400	707.43
3963-901	24X2	1	5	400	182.47
3963-903	24X3	1	5	400	183.44
3963-904	24X4	1	5	400	184.28
3963-906	24X6	1	5	400	192.29
3963-908	24X8	1	5	409	273.18
3963-910	24X10	1	5	400	307.00
3963-912	24X12	1	0	409	428.69
3963-914	24X14	1	0	400	473.88
3963-916	24X16	1	0	400	648.61
3963-918	24X18	1	0	400	731.41
3963-920	24X20	1	0	400	823.20

Stub Saddle

IPS O.D. x Socket Schedule 80



Non Pressure Rated

3965-528	6X2	1	8	400	64.76
3965-530	6X3	1	3	400	65.32
3965-532	6X4	1	10	400	65.91
3965-578	8X2	1	5	409	90.52
3965-580	8X3	1	4	400	92.59
3965-582	8X4	1	6	400	93.58
3965-585	8X6	1	4	400	95.77
3965-621	10X2	1	6	400	84.71
3965-623	10X3	1	6	409	85.00
3965-624	10X4	1	4	400	86.26
3965-626	10X6	1	4	400	100.29
3965-628	10X8	1	2	400	160.74
3965-661	12X2	1	4	400	100.06
3965-663	12X3	1	4	400	101.13
3965-664	12X4	1	2	400	101.51
3965-666	12X6	1	2	400	117.73
3965-668	12X8	1	2	400	185.25
3965-670	12X10	1	2	400	271.75
3965-691	14X2	1	4	400	123.25
3965-693	14X3	1	4	400	124.40
3965-694	14X4	1	5	400	124.98
3965-696	14X6	1	2	400	142.27
3965-700	14X10	1	0	400	279.33
3965-702	14X12	1	0	400	308.41
3965-751	16X2	1	5	400	129.77
3965-753	16X3	1	4	400	130.89
3965-754	16X4	1	3	400	131.63
3965-756	16X6	1	2	400	150.03
3965-758	16X8	1	3	400	223.75
3965-760	16X10	1	3	400	284.92

Schedule 80 PVC Product
Glue-On Saddles & Clamp-On Saddles



Glue-On Saddles

Part Number	Size	Std Pk	Mstr Ctn	Prod Code	MSRP
-------------	------	--------	----------	-----------	------

Stub Saddle (continued)

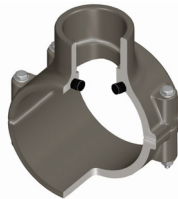
IPS O.D. x Socket Schedule 80

3965-762	16X12	1	0	400	316.43
3965-764	16X14	1	0	400	329.76
3965-781	18X2	1	2	400	190.64
3965-783	18X3	1	0	400	191.80
3965-784	18X4	1	0	400	192.67
3965-786	18X6	1	2	400	203.93
3965-788	18X8	1	0	400	299.62
3965-790	18X10	1	0	400	332.16
3965-792	18X12	1	0	400	473.71
3965-794	18X14	1	0	400	515.58
3965-796	18X16	1	0	400	674.63
3965-811	20X2	1	4	400	192.82
3965-813	20X3	1	2	400	193.27
3965-814	20X4	1	4	400	195.59
3965-816	20X6	1	0	400	205.17
3965-818	20X8	1	0	400	296.39
3965-820	20X10	1	0	400	328.69
3965-822	20X12	1	0	400	468.84
3965-824	20X14	1	0	400	511.33
3965-826	20X16	1	0	400	669.96
3965-828	20X18	1	0	400	760.68
3965-901	24X2	1	5	400	196.20
3965-903	24X3	1	2	400	197.24
3965-904	24X4	1	5	400	198.15
3965-906	24X6	1	3	400	206.78
3965-908	24X8	1	0	400	296.86
3965-910	24X10	1	0	400	330.12
3965-912	24X12	1	0	409	460.98
3965-914	24X14	1	0	400	509.55
3965-916	24X16	1	0	400	697.43
3965-918	24X18	1	0	400	786.46
3965-920	24X20	1	0	400	885.16

Clamp-On Saddles

Clamp-On Saddle x Socket Single Outlet PVC Gray

with FKM O-ring Seal & Zinc-Plated Hardware



2"- 4" 235, 6" 200, 8"-12" 150 psi @ 73°F (23°C)

866V-247	2X1/2	3/4	1	10	086	35.79
866V-248	2X3/4	7/8	1	10	086	35.79
866V-249	2X1	1-1/8	1	10	086	35.79
866V-250	2X1-1/4	1-1/2	1	10	086	35.79
866V-251	2X1-1/2	1-1/2	1	10	086	35.79
866V-291	2-1/2X1-1/2	1-3/4	1	10	086	49.56
866V-333 ¹	3X1/2	7/8	1	10	086	49.56
866V-334	3X3/4	7/8	1	10	086	49.56
866V-335	3X1	1-1/8	1	10	086	49.56

Part Number	Size	Hole Saw Dia	Std Pk	Mstr Ctn	Prod Code	MSRP
-------------	------	--------------	--------	----------	-----------	------

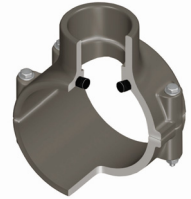
**Clamp-On Saddle x Socket Single Outlet PVC Gray (continued)
with FKM O-ring Seal & Zinc-Plated Hardware**

866V-336 ¹	3X1-1/4	2-1/4	1	10	086	49.56
866V-337 ¹	3X1-1/2	2-1/4	1	10	086	49.56
866V-338	3X2	2-1/4	1	10	086	49.56
866V-415 ¹	4X1/2	1-1/8	1	10	086	59.41
866V-416 ¹	4X3/4	1-1/8	1	10	086	59.41
866V-417	4X1	1-1/8	1	8	086	59.41
866V-418 ¹	4X1-1/4	1-3/4	1	8	086	59.41
866V-419	4X1-1/2	1-3/4	1	8	086	59.41
866V-420	4X2	2-1/4	1	8	086	59.41
866V-421 ¹	4X2-1/2	3	1	4	086	64.80
866V-422	4X3	3	1	4	086	70.52
866V-523 ¹	6X1/2	1-1/8	1	4	086	98.98
866V-524 ¹	6X3/4	1-1/8	1	4	086	98.98
866V-525	6X1	1-1/8	1	4	086	98.98
866V-526 ¹	6X1-1/4	2-1/4	1	4	086	98.98
866V-527 ¹	6X1-1/2	2-1/4	1	4	086	98.98
866V-528	6X2	2-1/4	1	4	086	98.98
866V-529 ¹	6X2-1/2	3	1	4	086	124.54
866V-530	6X3	3	1	4	086	129.66
866V-532	6X4	4	1	4	086	136.56
866V-573 ¹	8X1/2	4	1	0	086	212.14
866V-574 ¹	8X3/4	4	1	0	086	212.14
866V-575 ¹	8X1	4	1	0	086	212.14
866V-576 ¹	8X1-1/4	4	1	0	086	212.14
866V-577 ¹	8X1-1/2	4	1	0	086	212.14
866V-578	8 X 2	4	1	0	086	212.14
866V-579 ¹	8X2-1/2	4	1	0	086	222.55
866V-580 ¹	8X3	4	1	0	086	233.76
866V-582	8X4	4	1	0	086	247.79
866V-585	8X6	6	1	0	086	275.03
866V-624	10X4	4	1	0	086	327.19
866V-626	10X6	6	1	0	086	376.24
866V-664	12X4	4	1	0	086	410.32
866V-666	12X6	6	1	0	086	475.85

¹ Outlet-sized with Bushing

Clamp-On Saddle x Socket Single Outlet PVC Gray

with FKM O-ring Seal & SS Hardware



2"- 4" 235, 6" 200, 8"-12" 150 psi @ 73°F (23°C)

866SV-247	2X1/2	3/4	1	10	086	60.99
866SV-248	2X3/4	7/8	1	10	086	60.99
866SV-249	2X1	1-1/8	1	10	086	60.99
866SV-250	2X1-1/4	1-1/2	1	10	086	60.99
866SV-251	2X1-1/2	1-1/2	1	10	086	60.99
866SV-291	2-1/2X1-1/2	1-3/4	1	10	086	81.75
866SV-333 ¹	3X1/2	7/8	1	10	086	81.75
866SV-334	3X3/4	7/8	1	10	086	81.75
866SV-335	3X1	1-1/8	1	10	086	81.75
866SV-336 ¹	3X1-1/4	2-1/4	1	10	086	81.75
866SV-337 ¹	3X1-1/2	2-1/4	1	10	086	81.75