



Schedule 80 PVC Product

PVC Gray Saddles & Hot-Tap Saddles

PVC Gray Saddles & Hot-Tap Saddles



PRODUCT

Contact Spears® for any Information not found.

Schedule 80 PVC Product
Glue-On Saddles



Glue-On Saddles

Part Number	Size	Std Pk	Mstr Ctn	Prod Code	MSRP
-------------	------	--------	----------	-----------	------

Saddle



IPS O.D. x Socket Schedule 80

Non Pressure Rated

3963-528	6X2	1	6	400	63.39
3963-530	6X3	1	10	400	63.96
3963-532	6X4	1	8	400	64.51
3963-578	8X2	1	10	400	89.55
3963-580	8X3	1	8	400	90.64
3963-582	8X4	1	5	400	91.61
3963-585	8X6	1	5	400	93.75
3963-621	10X2	1	8	400	82.92
3963-623	10X3	1	5	400	84.08
3963-624	10X4	1	8	400	84.44
3963-626	10X6	1	5	400	98.19
3963-628	10X8	1	5	400	157.36
3963-661	12X2	1	10	400	97.96
3963-663	12X3	1	8	400	98.54
3963-664	12X4	1	10	400	99.37
3963-666	12X6	1	5	400	115.24
3963-668	12X8	1	2	400	181.35
3963-670	12X10	1	4	400	221.96
3963-693	14X3	1	8	400	121.77
3963-694	14X4	1	5	400	122.36
3963-696	14X6	1	8	400	139.28
3963-698	14X8	1	4	400	213.53
3963-700	14X10	1	3	400	273.44
3963-702	14X12	1	4	400	301.93
3963-751	16X2	1	10	400	127.04
3963-753	16X3	1	8	400	128.15
3963-754	16X4	1	10	400	128.87
3963-756	16X6	1	8	400	146.88
3963-758	16X8	1	3	400	219.03
3963-760	16X10	1	0	400	278.91
3963-762	16X12	1	0	400	309.77
3963-764	16X14	1	0	400	322.80
3963-781	18X2	1	10	400	186.64
3963-783	18X3	1	4	400	187.77
3963-784	18X4	1	5	400	188.62
3963-786	18X6	1	5	400	199.63
3963-788	18X8	1	5	400	293.32
3963-790	18X10	1	0	400	325.17
3963-792	18X12	1	0	400	463.74
3963-794	18X14	1	0	400	504.72
3963-796	18X16	1	0	400	660.43
3963-811	20X2	1	12	400	188.77
3963-813	20X3	1	4	400	189.21
3963-814	20X4	1	6	400	191.48
3963-816	20X6	1	0	400	200.86
3963-818	20X8	1	5	400	290.15

Part Number	Size	Std Pk	Mstr Ctn	Prod Code	MSRP
-------------	------	--------	----------	-----------	------

Saddle (continued)

IPS O.D. x Socket Schedule 80

3963-820	20X10	1	0	400	321.77
3963-822	20X12	1	0	400	458.97
3963-824	20X14	1	0	400	500.57
3963-826	20X16	1	0	400	655.83
3963-828	20X18	1	0	400	744.66
3963-901	24X2	1	5	400	192.07
3963-903	24X3	1	5	400	193.09
3963-904	24X4	1	5	400	193.98
3963-906	24X6	1	5	400	202.41
3963-908	24X8	1	5	409	287.56
3963-910	24X10	1	5	400	323.16
3963-912	24X12	1	0	409	451.25
3963-914	24X14	1	0	400	498.82
3963-916	24X16	1	0	400	682.75
3963-918	24X18	1	0	400	769.91
3963-920	24X20	1	0	400	866.53

Stub Saddle



IPS O.D. x Socket Schedule 80

Non Pressure Rated

3965-528	6X2	1	8	400	68.17
3965-530	6X3	1	3	400	68.76
3965-532	6X4	1	10	400	69.38
3965-578	8X2	1	5	409	95.28
3965-580	8X3	1	4	400	97.46
3965-582	8X4	1	6	400	98.51
3965-585	8X6	1	4	400	100.81
3965-621	10X2	1	6	400	89.17
3965-623	10X3	1	6	409	89.47
3965-624	10X4	1	4	400	90.80
3965-626	10X6	1	4	400	105.57
3965-628	10X8	1	2	400	169.20
3965-661	12X2	1	4	400	105.33
3965-663	12X3	1	4	400	106.45
3965-664	12X4	1	2	400	106.85
3965-666	12X6	1	2	400	123.93
3965-668	12X8	1	2	400	195.00
3965-670	12X10	1	2	400	286.05
3965-691	14X2	1	6	400	129.74
3965-693	14X3	1	4	400	130.95
3965-694	14X4	1	5	400	131.56
3965-696	14X6	1	2	400	149.76
3965-700	14X10	1	0	400	294.03
3965-702	14X12	1	0	400	324.64
3965-751	16X2	1	5	400	136.60
3965-753	16X3	1	4	400	137.78
3965-754	16X4	1	3	400	138.56
3965-756	16X6	1	2	400	157.93
3965-758	16X8	1	3	400	235.53
3965-760	16X10	1	3	400	299.92



Glue-On Saddles & Clamp-On Saddles

Glue-On Saddles

Part Number	Size	Std Pk	Mstr Ctn	Prod Code	MSRP
-------------	------	--------	----------	-----------	------

Stub Saddle (continued)

IPS O.D. x Socket Schedule 80

3965-762	16X12	1	0	400	333.08
3965-764	16X14	1	0	400	347.12
3965-781	18X2	1	2	400	200.67
3965-783	18X3	1	0	400	201.89
3965-784	18X4	1	0	400	202.81
3965-786	18X6	1	2	400	214.66
3965-788	18X8	1	0	400	315.39
3965-790	18X10	1	0	400	349.64
3965-792	18X12	1	0	400	498.64
3965-794	18X14	1	0	400	542.72
3965-796	18X16	1	0	400	710.14
3965-811	20X2	1	4	400	202.97
3965-813	20X3	1	2	400	203.44
3965-814	20X4	1	4	400	205.88
3965-816	20X6	1	0	400	215.97
3965-818	20X8	1	0	400	311.99
3965-820	20X10	1	0	400	345.99
3965-822	20X12	1	0	400	493.52
3965-824	20X14	1	0	400	538.24
3965-826	20X16	1	0	400	705.22
3965-828	20X18	1	0	400	800.72
3965-901	24X2	1	5	400	206.53
3965-903	24X3	1	2	400	207.62
3965-904	24X4	1	5	400	208.58
3965-906	24X6	1	3	400	217.66
3965-908	24X8	1	0	400	312.48
3965-910	24X10	1	0	400	347.49
3965-912	24X12	1	0	409	485.24
3965-914	24X14	1	0	400	536.37
3965-916	24X16	1	0	400	734.14
3965-918	24X18	1	0	400	827.85
3965-920	24X20	1	0	400	931.75

Clamp-On Saddles

Clamp-On Saddle x Socket Single Outlet PVC Gray

with FKM O-ring Seal & Zinc-Plated Hardware



2"- 4" 235, 6" 200, 8"-12" 150 psi @ 73°F (23°C)

866V-247	2X1/2	3/4	1	10	086	37.67
866V-248	2X3/4	7/8	1	10	086	37.67
866V-249	2X1	1-1/8	1	10	086	37.67
866V-250	2X1-1/4	1-1/2	1	10	086	37.67
866V-251	2X1-1/2	1-1/2	1	10	086	37.67
866V-291	2-1/2X1-1/2	1-3/4	1	10	086	52.17
866V-333 ¹	3X1/2	7/8	1	10	086	52.17
866V-334	3X3/4	7/8	1	10	086	52.17
866V-335	3X1	1-1/8	1	10	086	52.17

Part Number	Size	Hole Saw Dia	Std Pk	Mstr Ctn	Prod Code	MSRP
-------------	------	--------------	--------	----------	-----------	------

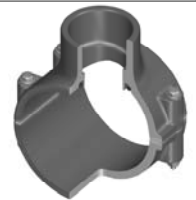
Clamp-On Saddle x Socket Single Outlet PVC Gray (continued) with FKM O-ring Seal & Zinc-Plated Hardware

866V-336 ¹	3X1-1/4	2-1/4	1	10	086	52.17
866V-337 ¹	3X1-1/2	2-1/4	1	10	086	52.17
866V-338	3X2	2-1/4	1	10	086	52.17
866V-415 ¹	4X1/2	1-1/8	1	10	086	62.54
866V-416 ¹	4X3/4	1-1/8	1	10	086	62.54
866V-417	4X1	1-1/8	1	8	086	62.54
866V-418 ¹	4X1-1/4	1-3/4	1	8	086	62.54
866V-419	4X1-1/2	1-3/4	1	8	086	62.54
866V-420	4X2	2-1/4	1	8	086	62.54
866V-421 ¹	4X2-1/2	3	1	4	086	68.21
866V-422	4X3	3	1	4	086	74.23
866V-523 ¹	6X1/2	1-1/8	1	4	086	104.19
866V-524 ¹	6X3/4	1-1/8	1	4	086	104.19
866V-525	6X1	1-1/8	1	4	086	104.19
866V-526 ¹	6X1-1/4	2-1/4	1	4	086	104.19
866V-527 ¹	6X1-1/2	2-1/4	1	4	086	104.19
866V-528	6X2	2-1/4	1	4	086	104.19
866V-529 ¹	6X2-1/2	3	1	4	086	131.09
866V-530	6X3	3	1	4	086	136.48
866V-532	6X4	4	1	4	086	143.75
866V-573 ¹	8X1/2	4	1	0	086	223.31
866V-574 ¹	8X3/4	4	1	0	086	223.31
866V-575 ¹	8X1	4	1	0	086	223.31
866V-576 ¹	8X1-1/4	4	1	0	086	223.31
866V-577 ¹	8X1-1/2	4	1	0	086	223.31
866V-578	8 X 2	4	1	0	086	223.31
866V-579 ¹	8X2-1/2	4	1	0	086	234.26
866V-580 ¹	8X3	4	1	0	086	246.06
866V-582	8X4	4	1	0	086	260.83
866V-585	8X6	6	1	0	086	289.51
866V-624	10X4	4	1	0	086	344.41
866V-626	10X6	6	1	0	086	396.04
866V-664	12X4	4	1	0	086	431.92
866V-666	12X6	6	1	0	086	500.89

¹ Outlet-sized with Bushing

Clamp-On Saddle x Socket Single Outlet PVC Gray

with FKM O-ring Seal & SS Hardware



2"- 4" 235, 6" 200, 8"-12" 150 psi @ 73°F (23°C)

866SV-247	2X1/2	3/4	1	10	086	64.20
866SV-248	2X3/4	7/8	1	10	086	64.20
866SV-249	2X1	1-1/8	1	10	086	64.20
866SV-250	2X1-1/4	1-1/2	1	10	086	64.20
866SV-251	2X1-1/2	1-1/2	1	10	086	64.20
866SV-291	2-1/2X1-1/2	1-3/4	1	10	086	86.05
866SV-333 ¹	3X1/2	7/8	1	10	086	86.05
866SV-334	3X3/4	7/8	1	10	086	86.05
866SV-335	3X1	1-1/8	1	10	086	86.05
866SV-336 ¹	3X1-1/4	2-1/4	1	10	086	86.05
866SV-337 ¹	3X1-1/2	2-1/4	1	10	086	86.05

Schedule 80 PVC Product
Clamp-On Saddles



Clamp-On Saddles

Part Number	Size	Hole Saw Dia	Std Pk	Mstr Ctn	Prod Code	MSRP
Clamp-On Saddle x Socket Single Outlet PVC Gray (continued) with FKM O-ring Seal & SS Hardware						
866SV-338	3X2	2-1/4	1	10	086	86.05
866SV-415 ¹	4X1/2	1-1/8	1	10	086	110.73
866SV-416 ¹	4X3/4	1-1/8	1	10	086	110.73
866SV-417	4X1	1-1/8	1	8	086	110.73
866SV-418 ¹	4X1-1/4	1-3/4	1	8	086	110.73
866SV-419	4X1-1/2	1-3/4	1	8	086	110.73
866SV-420	4X2	2-1/4	1	8	086	110.73
866SV-421 ¹	4X2-1/2	3	1	4	086	115.12
866SV-422	4X3	3	1	4	086	121.05
866SV-523 ¹	6X1/2	1-1/8	1	4	086	164.07
866SV-524 ¹	6X3/4	1-1/8	1	4	086	164.07
866SV-525	6X1	1-1/8	1	4	086	164.07
866SV-526 ¹	6X1-1/4	2-1/4	1	4	086	164.07
866SV-527 ¹	6X1-1/2	2-1/4	1	4	086	164.07
866SV-528	6X2	2-1/4	1	4	086	164.07
866SV-529 ¹	6X2-1/2	3	1	4	086	170.45
866SV-530	6X3	3	1	4	086	176.19
866SV-532	6X4	4	1	4	086	182.19
866SV-573 ¹	8X1/2	4	1	0	086	299.62
866SV-574 ¹	8X3/4	4	1	0	086	299.62
866SV-575 ¹	8 X 1	4	1	0	086	299.62
866SV-576 ¹	8X1-1/4	4	1	0	086	299.62
866SV-577 ¹	8X1-1/2	4	1	0	086	299.62
866SV-578	8 X 2	4	1	0	086	299.62
866SV-579 ¹	8X2-1/2	4	1	0	086	329.55
866SV-580 ¹	8X3	4	1	0	086	346.02
866SV-582	8X4	4	1	0	086	366.80
866SV-585	8X6	6	1	0	086	407.12
866SV-624	10X4	4	1	0	086	484.60
866SV-626	10X6	6	1	0	086	557.13
866SV-664	12X4	4	1	0	086	607.23
866SV-666	12X6	6	1	0	086	704.45

¹ Outlet-sized with Bushing



Clamp-On Saddle x Socket Single Outlet PVC Gray

with EPDM O-ring Seal & Zinc-Plated Hardware

2"- 4" 235, 6" 200, 8"-12" 150 psi @ 73°F (23°C)

866-247	2X1/2	3/4	1	10	086	35.91
866-248	2X3/4	7/8	1	10	086	35.91
866-249	2X1	1-1/8	1	10	086	35.91
866-250	2X1-1/4	1-1/2	1	10	086	35.91
866-251	2X1-1/2	1-1/2	1	10	086	35.91
866-291	2-1/2X1-1/2	1-3/4	1	10	086	47.94
866-333 ¹	3X1/2	7/8	1	10	086	47.94
866-334	3X3/4	7/8	1	10	086	47.94
866-335	3X1	1-1/8	1	10	086	47.94
866-336 ¹	3X1-1/4	2-1/4	1	10	086	47.94

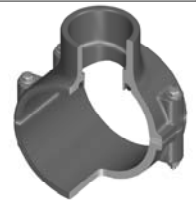
Made in the U.S.A.

Part Number	Size	Hole Saw Dia	Std Pk	Mstr Ctn	Prod Code	MSRP
-------------	------	--------------	--------	----------	-----------	------

Clamp-On Saddle x Socket Single Outlet PVC Gray (continued)
with EPDM O-ring Seal & Zinc-Plated Hardware

866-337 ¹	3X1-1/2	2-1/4	1	10	086	47.94
866-338	3X2	2-1/4	1	10	086	47.94
866-415 ¹	4X1/2	1-1/8	1	10	086	58.26
866-416 ¹	4X3/4	1-1/8	1	10	086	58.26
866-417	4X1	1-1/8	1	10	086	58.26
866-418 ¹	4X1-1/4	1-3/4	1	8	086	58.26
866-419	4X1-1/2	1-3/4	1	8	086	58.26
866-420	4X2	2-1/4	1	8	086	58.26
866-421 ¹	4X2-1/2	3	1	4	086	63.64
866-422	4X3	3	1	4	086	69.65
866-523 ¹	6X1/2	1-1/8	1	4	086	97.11
866-524 ¹	6X3/4	1-1/8	1	4	086	97.11
866-525	6X1	1-1/8	1	4	086	97.11
866-526 ¹	6X1-1/4	2-1/4	1	4	086	97.11
866-527 ¹	6X1-1/2	2-1/4	1	4	086	97.11
866-528	6X2	2-1/4	1	4	086	97.11
866-529 ¹	6X2-1/2	3	1	4	086	105.99
866-530	6X3	3	1	4	086	116.56
866-532	6X4	4	1	4	086	121.47
866-573 ¹	8X1/2	4	1	0	086	186.79
866-574 ¹	8X3/4	4	1	0	086	186.79
866-575 ¹	8X1	4	1	0	086	186.79
866-576 ¹	8X1-1/4	4	1	0	086	186.79
866-577 ¹	8X1-1/2	4	1	0	086	186.79
866-578	8 X 2	4	1	0	086	186.79
866-579 ¹	8X2-1/2	4	1	0	086	205.47
866-580 ¹	8X3	4	1	0	086	215.77
866-582	8X4	4	1	0	086	228.52
866-585	8X6	6	1	0	086	253.88
866-621 ¹	10X2	4	1	0	086	302.68
866-624	10X4	4	1	0	086	302.68
866-626	10X6	6	1	0	086	346.34
866-664	12X4	4	1	0	086	378.53
866-666	12X6	6	1	0	086	437.81

¹ Outlet-sized with Bushing



Clamp-On Saddle x Socket Single Outlet PVC Gray

with EPDM O-ring Seal & SS Hardware

2"- 4" 235, 6" 200, 8"-12" 150 psi @ 73°F (23°C)

866S-247	2X1/2	3/4	1	10	086	57.52
866S-248	2X3/4	7/8	1	10	086	57.52
866S-249	2X1	1-1/8	1	10	086	57.52
866S-250	2X1-1/4	1-1/2	1	10	086	57.52
866S-251	2X1-1/2	1-1/2	1	10	086	57.52
866S-291	2-1/2X1-1/2	1-3/4	1	10	086	77.32
866S-333 ¹	3X1/2	7/8	1	10	086	77.32
866S-334	3X3/4	7/8	1	10	086	77.32
866S-335	3X1	1-1/8	1	10	086	77.32
866S-336 ¹	3X1-1/4	2-1/4	1	10	086	77.32
866S-337 ¹	3X1-1/2	2-1/4	1	10	086	77.32



Schedule 80 PVC Product
Clamp-On Saddles

Clamp-On Saddles

Part Number	Size	Hole Saw Dia	Std Pk	Mstr Ctn	Prod Code	MSRP
Clamp-On Saddle x Socket Single Outlet PVC Gray (continued) with EPDM O-ring Seal & SS Hardware						
866S-338	3X2	2-1/4	1	10	086	77.32
866S-415 ¹	4X1/2	1-1/8	1	10	086	99.54
866S-416 ¹	4X3/4	1-1/8	1	10	086	99.54
866S-417	4X1	1-1/8	1	8	086	99.54
866S-418 ¹	4X1-1/4	1-3/4	1	8	086	99.54
866S-419	4X1-1/2	1-3/4	1	8	086	99.54
866S-420	4X2	2-1/4	1	8	086	99.54
866S-421 ¹	4X2-1/2	3	1	4	086	103.04
866S-422	4X3	3	1	4	086	109.13
866S-523 ¹	6X1/2	1-1/8	1	4	086	149.80
866S-524 ¹	6X3/4	1-1/8	1	4	086	149.80
866S-525	6X1	1-1/8	1	4	086	149.80
866S-526 ¹	6X1-1/4	2-1/4	1	4	086	149.80
866S-527 ¹	6X1-1/2	2-1/4	1	4	086	149.80
866S-528	6X2	2-1/4	1	4	086	149.80
866S-529 ¹	6X2-1/2	3	1	4	086	156.91
866S-530	6X3	3	1	4	086	162.26
866S-532	6X4	4	1	4	086	168.34
866S-573 ¹	8X1/2	4	1	0	086	281.51
866S-574 ¹	8X3/4	4	1	0	086	281.51
866S-575	8X1	4	1	0	086	281.51
866S-576 ¹	8X1-1/4	4	1	0	086	281.51
866S-577 ¹	8X1-1/2	4	1	0	086	281.51
866S-578	8 X 2	4	1	0	086	281.51
866S-579 ¹	8X2-1/2	4	1	0	086	309.73
866S-580 ¹	8X3	4	1	0	086	325.26
866S-582	8X4	4	1	0	086	343.25
866S-585	8X6	6	1	0	086	382.72
866S-624	10X4	4	1	0	086	455.55
866S-626	10X6	6	1	0	086	523.76
866S-664	12X4	4	1	0	086	571.03
866S-666	12X6	6	1	0	086	662.34

¹ Outlet-sized with Bushing



Clamp-On Saddle x SR Thread Single Outlet PVC Gray
with FKM O-ring Seal & Zinc-Plated Hardware

2"- 4" 235, 6" 200, 8"-12" 150 psi @ 73°F (23°C)

867V-247SR	2X1/2	3/4	1	10	086	42.13
867V-248SR	2X3/4	7/8	1	10	086	42.13
867V-249SR	2X1	1-1/8	1	10	086	42.13
867V-250SR	2X1-1/4	1-1/2	1	10	086	42.13
867V-251SR	2X1-1/2	1-1/2	1	10	086	42.13
867V-291SR	2-1/2X1-1/2	1-3/4	1	10	086	58.71
867V-333SR ¹	3X1/2	7/8	1	10	086	58.71
867V-334SR	3X3/4	7/8	1	10	086	58.71
867V-335SR	3X1	1-1/8	1	10	086	58.71
867V-336SR ¹	3X1-1/4	2-1/4	1	10	086	58.71

Part Number	Size	Hole Saw Dia	Std Pk	Mstr Ctn	Prod Code	MSRP
-------------	------	--------------	--------	----------	-----------	------

Clamp-On Saddle x SR Thread Single Outlet PVC Gray (continued)
with FKM O-ring Seal & Zinc-Plated Hardware

867V-337SR ¹	3X1-1/2	2-1/4	1	10	086	58.71
867V-338SR	3X2	2-1/4	1	10	086	58.71
867V-415SR ¹	4X1/2	1-1/8	1	10	086	73.36
867V-416SR ¹	4X3/4	1-1/8	1	10	086	73.36
867V-417SR	4X1	1-1/8	1	8	086	73.36
867V-418SR ¹	4X1-1/4	1-3/4	1	8	086	73.36
867V-419SR	4X1-1/2	1-3/4	1	8	086	73.36
867V-420SR	4X2	2-1/4	1	8	086	73.36
867V-421SR ¹	4X2-1/2	3	1	4	086	79.01
867V-422SR	4X3	3	1	4	086	83.63
867V-523SR ¹	6X1/2	1-1/8	1	4	086	122.27
867V-524SR ¹	6X3/4	1-1/8	1	4	086	122.27
867V-525SR	6X1	1-1/8	1	4	086	122.27
867V-526SR ¹	6X1-1/4	2-1/4	1	4	086	122.27
867V-527SR ¹	6X1-1/2	2-1/4	1	4	086	122.27
867V-528SR	6X2	2-1/4	1	4	086	122.27
867V-529SR ¹	6X2-1/2	3	1	4	086	156.77
867V-530SR	6X3	3	1	4	086	162.92
867V-532SR	6X4	4	1	4	086	169.96
867V-573SR ¹	8X1/2	4	1	0	086	246.45
867V-574SR ¹	8X3/4	4	1	0	086	246.45
867V-575SR ¹	8X1	4	1	0	086	246.45
867V-576SR ¹	8X1-1/4	4	1	0	086	246.45
867V-577SR ¹	8X1-1/2	4	1	0	086	246.45
867V-578SR ¹	8X2	4	1	0	086	246.45
867V-579SR ¹	8X2-1/2	4	1	0	086	271.03
867V-580SR ¹	8X3	4	1	0	086	284.63
867V-582SR	8X4	4	1	0	086	301.73
867V-585SR	8X6	4	1	0	086	335.83
867V-624SR	10X4	4	1	0	086	359.07
867V-626SR	10X6	6	1	0	086	412.85
867V-664SR	12X4	4	1	0	086	450.11
867V-666SR	12X6	6	1	0	086	522.05

¹ Outlet-sized with Bushing



Clamp-On Saddle x SR Thread Single Outlet PVC Gray
with FKM O-ring Seal & SS Hardware

2"- 4" 235, 6" 200, 8"-12" 150 psi @ 73°F (23°C)

867SV-245SR ¹	2X1/4	1-1/8	1	10	086	77.99
867SV-247SR	2X1/2	3/4	1	10	086	71.62
867SV-248SR	2X3/4	7/8	1	10	086	71.62
867SV-249SR	2X1	1-1/8	1	10	086	71.62
867SV-250SR	2X1-1/4	1-1/2	1	10	086	71.62
867SV-251SR	2X1-1/2	1-1/2	1	10	086	71.62
867SV-291SR	2-1/2X1-1/2	1-3/4	1	10	086	95.76
867SV-331SR ¹	3X1/4	1-1/8	1	10	086	95.76
867SV-333SR ¹	3X1/2	7/8	1	10	086	95.76
867SV-334SR	3X3/4	7/8	1	10	086	95.76
867SV-335SR	3X1	1-1/8	1	10	086	95.76

Schedule 80 PVC Product
Clamp-On Saddles



Clamp-On Saddles

Part Number	Size	Hole Saw Dia	Std Pk	Mstr Ctn	Prod Code	MSRP
-------------	------	--------------	--------	----------	-----------	------

Clamp-On Saddle x SR Thread Single Outlet PVC Gray (continued) with FKM O-ring Seal & SS Hardware

867SV-336SR ¹	3X1-1/4	2-1/4	1	10	086	95.76
867SV-337SR ¹	3X1-1/2	2-1/4	1	10	086	95.76
867SV-338SR	3X2	2-1/4	1	10	086	95.76
867SV-413SR ¹	4X1/4	1-1/8	1	8	086	122.18
867SV-415SR ¹	4X1/2	1-1/8	1	10	086	120.91
867SV-416SR ¹	4X3/4	1-1/8	1	10	086	120.91
867SV-417SR	4X1	1-1/8	1	8	086	120.91
867SV-418SR ¹	4X1-1/4	1-3/4	1	8	086	120.91
867SV-419SR	4X1-1/2	1-3/4	1	8	086	120.91
867SV-420SR	4X2	2-1/4	1	8	086	120.91
867SV-421SR ¹	4X2-1/2	3	1	4	086	124.92
867SV-422SR	4X3	3	1	4	086	131.29
867SV-521SR ¹	6X1/4	1-1/8	1	8	086	181.45
867SV-523SR ¹	6X1/2	1-1/8	1	4	086	177.59
867SV-524SR ¹	6X3/4	1-1/8	1	4	086	177.59
867SV-525SR	6X1	1-1/8	1	4	086	177.59
867SV-526SR ¹	6X1-1/4	2-1/4	1	4	086	177.59
867SV-527SR ¹	6X1-1/2	2-1/4	1	4	086	177.59
867SV-528SR	6X2	2-1/4	1	4	086	177.59
867SV-529SR ¹	6X2-1/2	3	1	4	086	192.40
867SV-530SR	6X3	3	1	4	086	201.27
867SV-532SR	6X4	4	1	4	086	208.38
867SV-571SR ¹	8X1/4	4	1	0	086	330.12
867SV-573SR ¹	8X1/2	4	1	0	086	317.36
867SV-574SR ¹	8X3/4	4	1	0	086	317.36
867SV-575SR ¹	8X1	4	1	0	086	317.36
867SV-576SR ¹	8X1-1/4	4	1	0	086	317.36
867SV-577SR ¹	8X1-1/2	4	1	0	086	317.36
867SV-578SR ¹	8X2	4	1	0	086	317.36
867SV-579SR ¹	8X2-1/2	4	1	0	086	349.08
867SV-580SR ¹	8X3	4	1	0	086	366.54
867SV-582SR	8X4	4	1	0	086	388.54
867SV-585SR	8X6	6	1	0	086	425.78
867SV-624SR	10X4	4	1	0	086	462.19
867SV-626SR	10X6	6	1	0	086	531.80
867SV-664SR	12X4	4	1	0	086	579.62
867SV-666SR	12X6	6	1	0	086	672.26

¹ Outlet-sized with Bushing

Clamp-On Saddle x SR Thread Single Outlet PVC Gray

with EPDM O-ring Seal & Zinc-Plated Hardware



2"- 4" 235, 6" 200, 8"-12" 150 psi @ 73°F (23°C)

867-247SR	2X1/2	3/4	1	10	086	37.46
867-248SR	2X3/4	7/8	1	10	086	37.46
867-249SR	2X1	1-1/8	1	10	086	37.46
867-250SR	2X1-1/4	1-1/2	1	10	086	37.46

Made in the U.S.A.

Part Number	Size	Hole Saw Dia	Std Pk	Mstr Ctn	Prod Code	MSRP
-------------	------	--------------	--------	----------	-----------	------

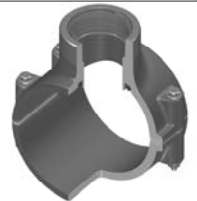
Clamp-On Saddle x SR Thread Single Outlet PVC Gray (continued) with EPDM O-ring Seal & Zinc-Plated Hardware

867-251SR	2X1-1/2	1-1/2	1	10	086	37.46
867-291SR	2-1/2X1-1/2	1-3/4	1	10	086	51.19
867-333SR ¹	3X1/2	7/8	1	10	086	51.19
867-334SR	3X3/4	7/8	1	10	086	51.19
867-335SR	3X1	1-1/8	1	10	086	51.19
867-336SR ¹	3X1-1/4	2-1/4	1	10	086	51.19
867-337SR ¹	3X1-1/2	2-1/4	1	10	086	51.19
867-338SR	3X2	2-1/4	1	10	086	51.19
867-415SR ¹	4X1/2	1-1/8	1	10	086	64.49
867-416SR ¹	4X3/4	1-1/8	1	10	086	64.49
867-417SR	4X1	1-1/8	1	8	086	64.49
867-418SR ¹	4X1-1/4	1-3/4	1	8	086	64.49
867-419SR ¹	4X1-1/2	1-3/4	1	8	086	64.49
867-420SR	4X2	2-1/4	1	8	086	64.49
867-421SR ¹	4X2-1/2	3	1	4	086	66.02
867-422SR	4X3	3	1	4	086	75.65
867-523SR ¹	6X1/2	1-1/8	1	4	086	107.46
867-524SR ¹	6X3/4	1-1/8	1	4	086	107.46
867-525SR	6X1	1-1/8	1	4	086	107.46
867-526SR ¹	6X1-1/4	2-1/4	1	4	086	107.46
867-527SR ¹	6X1-1/2	2-1/4	1	4	086	107.46
867-528SR	6X2	2-1/4	1	4	086	107.46
867-529SR ¹	6X2-1/2	3	1	4	086	133.49
867-530SR	6X3	3	1	4	086	143.73
867-532SR	6X4	4	1	4	086	150.49
867-573SR	8X1/2	4	1	0	086	227.46
867-574SR ¹	8X3/4	4	1	0	086	227.46
867-575SR	8X1	4	1	0	086	227.46
867-576SR ¹	8X1-1/4	4	1	0	086	227.46
867-577SR ¹	8X1-1/2	4	1	0	086	227.46
867-578SR ¹	8X2	4	1	0	086	227.46
867-579SR ¹	8X2-1/2	4	1	0	086	250.25
867-580SR ¹	8X3	4	1	0	086	262.65
867-582SR	8X4	4	1	0	086	278.48
867-585SR	8X6	6	1	0	086	320.72
867-624SR	10X4	4	1	0	086	331.27
867-626SR	10X6	4	1	0	086	381.00
867-664SR	12X4	4	1	0	086	415.12
867-666SR	12X6	6	1	0	086	481.83

¹ Outlet-sized with Bushing

Clamp-On Saddle x SR Thread Single Outlet PVC Gray

with EPDM O-ring Seal & SS Hardware



2"- 4" 235, 6" 200, 8"-12" 150 psi @ 73°F (23°C)

867S-245SR ¹	2X1/4	1-1/8	1	10	086	71.62
867S-247SR	2X1/2	3/4	1	10	086	64.01
867S-248SR	2X3/4	7/8	1	10	086	64.01
867S-249SR	2X1	1-1/8	1	10	086	64.01
867S-250SR	2X1-1/4	1-1/2	1	10	086	64.01



Schedule 80 PVC Product
Clamp-On Saddles

Clamp-On Saddles

Part Number	Size	Hole Saw Dia	Std Pk	Mstr Ctn	Prod Code	MSRP
Clamp-On Saddle x SR Thread Single Outlet PVC Gray (continued) with EPDM O-ring Seal & SS Hardware						
867S-251SR	2X1-1/2	1-1/2	1	10	086	64.01
867S-291SR	2-1/2X1-1/2	1-3/4	1	10	086	86.06
867S-331SR ¹	3X1/4	1-1/8	1	10	086	95.20
867S-333SR ¹	3X1/2	7/8	1	10	086	86.06
867S-334SR	3X3/4	7/8	1	10	086	86.06
867S-335SR	3X1	1-1/8	1	10	086	86.06
867S-336SR ¹	3X1-1/4	2-1/4	1	10	086	86.06
867S-337SR ¹	3X1-1/2	2-1/4	1	10	086	86.06
867S-338SR	3X2	2-1/4	1	10	086	86.06
867S-413SR	4X1/4		1	8	086	112.01
867S-415SR ¹	4X1/2	1-1/8	1	10	086	108.36
867S-416SR ¹	4X3/4	1-1/8	1	10	086	108.36
867S-417SR	4X1	1-1/8	1	8	086	108.36
867S-418SR ¹	4X1-1/4	1-3/4	1	8	086	108.36
867S-419SR	4X1-1/2	1-3/4	1	8	086	108.36
867S-420SR	4X2	2-1/4	1	8	086	108.36
867S-421SR ¹	4X2-1/2	3	1	4	086	113.41
867S-422SR	4X3	3	1	4	086	122.24
867S-521SR ¹	6X1/4	1-1/8	1	8	086	171.87
867S-523SR ¹	6X1/2	1-1/8	1	4	086	156.64
867S-524SR ¹	6X3/4	1-1/8	1	4	086	156.64
867S-525SR	6X1	1-1/8	1	4	086	156.64
867S-526SR ¹	6X1-1/4	2-1/4	1	4	086	156.64
867S-527SR ¹	6X1-1/2	2-1/4	1	4	086	156.64
867S-528SR	6X2	2-1/4	1	4	086	156.64
867S-529SR ¹	6X2-1/2	3	1	4	086	178.81
867S-530SR	6X3	3	1	4	086	184.62
867S-532SR	6X4	4	1	4	086	192.29
867S-571SR ¹	8X1/4	4	1	0	086	339.37
867S-573SR ¹	8X1/2	4	1	0	086	290.46
867S-574SR ¹	8X3/4	4	1	0	086	290.46
867S-575SR ¹	8X1	4	1	0	086	290.46
867S-576SR ¹	8X1-1/4	4	1	0	086	290.46
867S-577SR ¹	8X1-1/2	4	1	0	086	290.46
867S-578SR ¹	8X2	4	1	0	086	290.46
867S-579SR ¹	8X2-1/2	4	1	0	086	324.02
867S-580SR ¹	8X3	4	1	0	086	342.43
867S-582SR	8X4	4	1	0	086	361.76
867S-585SR	8X6	6	1	0	086	379.78
867S-624SR	10X4	4	1	0	086	445.94
867S-626SR	10X6	6	1	0	086	468.87
867S-664SR	12X4	4	1	0	086	511.19
867S-666SR	12X6	6	1	0	086	592.96

¹ Outlet-sized with Bushing

Part Number	Size	Hole Saw Dia	Std Pk	Mstr Ctn	Prod Code	MSRP
-------------	------	--------------	--------	----------	-----------	------

Clamp-On Saddle x Socket Double Outlet PVC Gray

with FKM O-ring Seal & Zinc-Plated Hardware



2"- 4" 235, 6" 200, 8"-12" 150 psi @ 73°F (23°C)

868V-247	2X1/2	3/4	1	10	086	46.68
868V-248	2X3/4	7/8	1	10	086	46.68
868V-249	2X1	1-1/8	1	10	086	46.68
868V-250	2X1-1/4	1-1/2	1	10	086	46.68
868V-251	2X1-1/2	1-1/2	1	10	086	46.68
868V-291	2-1/2X1-1/2	1-3/4	1	10	086	59.80
868V-333 ¹	3X1/2	7/8	1	10	086	59.80
868V-334	3X3/4	7/8	1	10	086	59.80
868V-335	3X1	1-1/8	1	10	086	59.80
868V-336 ¹	3X1-1/4	2-1/4	1	10	086	59.80
868V-337 ¹	3X1-1/2	2-1/4	1	10	086	59.80
868V-338	3X2	2-1/4	1	10	086	59.80
868V-415 ¹	4X1/2	1-1/8	1	10	086	79.83
868V-416 ¹	4X3/4	1-1/8	1	10	086	79.83
868V-417	4X1	1-1/8	1	8	086	79.83
868V-418 ¹	4X1-1/4	1-3/4	1	8	086	79.83
868V-419	4X1-1/2	1-3/4	1	8	086	79.83
868V-420	4X2	2-1/4	1	8	086	79.83
868V-421 ¹	4X2-1/2	3	1	4	086	86.78
868V-422	4X3	3	1	4	086	93.55
868V-523 ¹	6X1/2	1-1/8	1	4	086	131.07
868V-524 ¹	6X3/4	1-1/8	1	4	086	131.07
868V-525	6X1	1-1/8	1	4	086	131.07
868V-526 ¹	6X1-1/4	2-1/4	1	4	086	131.07
868V-527 ¹	6X1-1/2	2-1/4	1	4	086	131.07
868V-528	6X2	2-1/4	1	4	086	131.07
868V-529 ¹	6X2-1/2	3	1	4	086	136.08
868V-530	6X3	3	1	4	086	143.54
868V-532	6X4	4	1	4	086	153.41
868V-573 ¹	8X1/2	4	1	0	086	275.62
868V-574 ¹	8X3/4	4	1	0	086	275.62
868V-575 ¹	8X1	4	1	0	086	275.62
868V-576 ¹	8X1-1/4	4	1	0	086	275.62
868V-577 ¹	8X1-1/2	4	1	0	086	275.62
868V-578 ¹	8X2	4	1	0	086	275.62
868V-579 ¹	8X2-1/2	4	1	0	086	289.13
868V-580 ¹	8X3	4	1	0	086	303.81
868V-582	8X4	4	1	0	086	321.94
868V-585	8X6	6	1	0	086	357.36
868V-624	10X4	4	1	0	086	425.32
868V-626	10X6	6	1	0	086	448.84
868V-664	12X4	4	1	0	086	533.13
868V-666	12X6	6	1	0	086	618.31

¹ Outlet-sized with Bushing

Schedule 80 PVC Product
Clamp-On Saddles



Clamp-On Saddles

Part Number	Size	Hole Saw Dia	Std Pk	Mstr Ctn	Prod Code	MSRP
-------------	------	--------------	--------	----------	-----------	------

Clamp-On Saddle x Socket Double Outlet PVC Gray

with FKM O-ring Seal & SS Hardware



2"- 4" 235, 6" 200, 8"-12" 150 psi @ 73°F (23°C)

868SV-247	2X1/2	3/4	1	10	086	75.08
868SV-248	2X3/4	7/8	1	10	086	75.08
868SV-249	2X1	1-1/8	1	10	086	75.08
868SV-250	2X1-1/4	1-1/2	1	10	086	75.08
868SV-251	2X1-1/2	1-1/2	1	10	086	75.08
868SV-291	2-1/2X1-1/2	1-3/4	1	10	086	99.77
868SV-333 ¹	3X1/2	7/8	1	10	086	99.77
868SV-334	3X3/4	7/8	1	10	086	99.77
868SV-335	3X1	1-1/8	1	10	086	99.77
868SV-336 ¹	3X1-1/4	2-1/4	1	10	086	99.77
868SV-337 ¹	3X1-1/2	2-1/4	1	10	086	99.77
868SV-338	3X2	2-1/4	1	10	086	99.77
868SV-415 ¹	4X1/2	1-1/8	1	10	086	127.75
868SV-416 ¹	4X3/4	1-1/8	1	10	086	127.75
868SV-417	4X1	1-1/8	1	8	086	127.75
868SV-418 ¹	4X1-1/4	1-3/4	1	8	086	127.75
868SV-419	4X1-1/2	1-3/4	1	8	086	127.75
868SV-420	4X2	2-1/4	1	16	086	127.75
868SV-421 ¹	4X2-1/2	3	1	4	086	137.18
868SV-422	4X3	3	1	4	086	142.87
868SV-523 ¹	6X1/2	1-1/8	1	4	086	197.89
868SV-524 ¹	6X3/4	1-1/8	1	4	086	197.89
868SV-525	6X1	1-1/8	1	4	086	197.89
868SV-526 ¹	6X1-1/4	2-1/4	1	4	086	197.89
868SV-527 ¹	6X1-1/2	2-1/4	1	4	086	197.89
868SV-528	6X2	2-1/4	1	4	086	197.89
868SV-529 ¹	6X2-1/2	3	1	4	086	209.76
868SV-530	6X3	3	1	4	086	215.58
868SV-532	6X4	4	1	4	086	221.85
868SV-573 ¹	8X1/2	4	1	0	086	369.95
868SV-574 ¹	8X3/4	4	1	0	086	369.95
868SV-575 ¹	8X1	4	1	0	086	369.95
868SV-576 ¹	8X1-1/4	4	1	0	086	369.95
868SV-577 ¹	8X1-1/2	4	1	0	086	369.95
868SV-578 ¹	8X2	4	1	0	086	369.95
868SV-579 ¹	8X2-1/2	4	1	0	086	406.94
868SV-580 ¹	8X3	4	1	0	086	427.24
868SV-582	8X4	4	1	0	086	429.32
868SV-585	8X6	6	1	0	086	502.61
868SV-624	10X4	4	1	0	086	598.11
868SV-626	10X6	6	1	0	086	687.87
868SV-664	12X4	4	1	0	086	749.73
868SV-666	12X6	6	1	0	086	869.72

¹ Outlet-sized with Bushing

Part Number	Size	Hole Saw Dia	Std Pk	Mstr Ctn	Prod Code	MSRP
-------------	------	--------------	--------	----------	-----------	------

Clamp-On Saddle x Socket Double Outlet PVC Gray

with EPDM O-ring Seal & Zinc-Plated Hardware



2"- 4" 235, 6" 200, 8"-12" 150 psi @ 73°F (23°C)

868-247	2X1/2	3/4	1	10	086	42.73
868-248	2X3/4	7/8	1	10	086	42.73
868-249	2X1	1-1/8	1	10	086	42.73
868-250	2X1-1/4	1-1/2	1	10	086	42.73
868-251	2X1-1/2	1-1/2	1	10	086	42.73
868-291	2-1/2X1-1/2	1-3/4	1	10	086	58.72
868-333 ¹	3X1/2	7/8	1	10	086	58.72
868-334	3X3/4	7/8	1	10	086	58.72
868-335	3X1	1-1/8	1	10	086	58.72
868-336 ¹	3X1-1/4	2-1/4	1	10	086	58.72
868-337 ¹	3X1-1/2	2-1/4	1	10	086	58.72
868-338	3X2	2-1/4	1	10	086	58.72
868-415 ¹	4X1/2	1-1/8	1	10	086	74.07
868-416 ¹	4X3/4	1-1/8	1	10	086	74.07
868-417	4X1	1-1/8	1	8	086	74.07
868-418 ¹	4X1-1/4	1-3/4	1	8	086	74.07
868-419	4X1-1/2	1-3/4	1	8	086	74.07
868-420	4X2	2-1/4	1	8	086	74.07
868-421 ¹	4X2-1/2	3	1	4	086	79.55
868-422	4X3	3	1	4	086	84.18
868-523 ¹	6X1/2	1-1/8	1	4	086	123.74
868-524 ¹	6X3/4	1-1/8	1	4	086	123.74
868-525	6X1	1-1/8	1	4	086	123.74
868-526 ¹	6X1-1/4	2-1/4	1	4	086	123.74
868-527 ¹	6X1-1/2	2-1/4	1	4	086	123.74
868-528	6X2	2-1/4	1	4	086	123.74
868-529 ¹	6X2-1/2	3	1	4	086	130.77
868-530	6X3	3	1	4	086	138.20
868-532	6X4	4	1	4	086	143.74
868-573 ¹	8X1/2	4	1	0	086	231.39
868-574 ¹	8X3/4	4	1	0	086	231.39
868-575 ¹	8X1	4	1	0	086	231.39
868-576 ¹	8X1-1/4	4	1	0	086	231.39
868-577 ¹	8X1-1/2	4	1	0	086	231.39
868-578 ¹	8X2	4	1	0	086	231.39
868-579 ¹	8X2-1/2	4	1	0	086	253.69
868-580 ¹	8X3	4	1	0	086	266.27
868-582	8X4	4	1	0	086	282.07
868-585	8X6	6	1	0	086	313.34
868-624	10X4	4	1	0	086	372.81
868-626	10X6	6	1	0	086	428.85
868-664	12X4	4	1	0	086	467.34
868-666	12X6	6	1	0	086	542.07

¹ Outlet-sized with Bushing



Schedule 80 PVC Product
Clamp-On Saddles

Clamp-On Saddles

Part Number	Size	Hole Saw Dia	Std Pk	Mstr Ctn	Prod Code	MSRP
-------------	------	--------------	--------	----------	-----------	------

Clamp-On Saddle x Socket Double Outlet PVC Gray

with EPDM O-ring Seal & SS Hardware



2" - 4" 235, 6" 200, 8"-12" 150 psi @ 73°F (23°C)

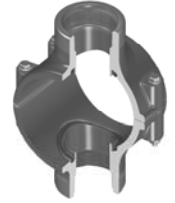
868S-247	2X1/2	3/4	1	10	086	65.13
868S-248	2X3/4	7/8	1	10	086	65.13
868S-249	2X1	1-1/8	1	10	086	65.13
868S-250	2X1-1/4	1-1/2	1	10	086	65.13
868S-251	2X1-1/2	1-1/2	1	10	086	65.13
868S-291	2-1/2X1-1/2	1-3/4	1	10	086	87.53
868S-333 ¹	3X1/2	7/8	1	10	086	87.53
868S-334	3X3/4	7/8	1	10	086	87.53
868S-335	3X1	1-1/8	1	10	086	87.53
868S-336 ¹	3X1-1/4	2-1/4	1	10	086	87.53
868S-337 ¹	3X1-1/2	2-1/4	1	10	086	87.53
868S-338	3X2	2-1/4	1	10	086	87.53
868S-415 ¹	4X1/2	1-1/8	1	10	086	112.71
868S-416 ¹	4X3/4	1-1/8	1	10	086	112.71
868S-417	4X1	1-1/8	1	8	086	112.71
868S-418 ¹	4X1-1/4	1-3/4	1	8	086	112.71
868S-419	4X1-1/2	1-3/4	1	8	086	112.71
868S-420	4X2	2-1/4	1	8	086	112.71
868S-421 ¹	4X2-1/2	3	1	4	086	122.31
868S-422	4X3	3	1	4	086	125.59
868S-523 ¹	6X1/2	1-1/8	1	4	086	187.83
868S-524 ¹	6X3/4	1-1/8	1	4	086	187.83
868S-525	6X1	1-1/8	1	4	086	187.83
868S-526 ¹	6X1-1/4	2-1/4	1	4	086	187.83
868S-527 ¹	6X1-1/2	2-1/4	1	4	086	187.83
868S-528	6X2	2-1/4	1	4	086	187.83
868S-529 ¹	6X2-1/2	3	1	4	086	194.19
868S-530	6X3	3	1	4	086	202.08
868S-532	6X4	4	1	4	086	210.13
868S-573 ¹	8X1/2	4	1	0	086	347.45
868S-574 ¹	8X3/4	4	1	0	086	347.45
868S-575 ¹	8X1	4	1	0	086	347.45
868S-576 ¹	8X1-1/4	4	1	0	086	347.45
868S-577 ¹	8X1-1/2	4	1	0	086	347.45
868S-578 ¹	8X2	4	1	0	086	347.45
868S-579 ¹	8X2-1/2	4	1	0	086	382.35
868S-580 ¹	8X3	4	1	0	086	401.59
868S-582	8X4	4	1	0	086	423.72
868S-585	8X6	6	1	0	086	505.41
868S-624	10X4	4	1	0	086	562.28
868S-626	10X6	6	1	0	086	646.61
868S-664	12X4	4	1	0	086	704.85
868S-666	12X6	6	1	0	086	817.48

¹ Outlet-sized with Bushing

Part Number	Size	Hole Saw Dia	Std Pk	Mstr Ctn	Prod Code	MSRP
-------------	------	--------------	--------	----------	-----------	------

Clamp-On Saddle x SR Thread Double Outlet PVC Gray

with FKM O-ring Seal & Zinc-Plated Hardware



2" - 4" 235, 6" 200, 8"-12" 150 psi @ 73°F (23°C)

869V-247SR	2X1/2	3/4	1	10	086	51.95
869V-248SR	2X3/4	7/8	1	10	086	51.95
869V-249SR	2X1	1-1/8	1	10	086	51.95
869V-250SR	2X1-1/4	1-1/2	1	10	086	51.95
869V-251SR	2X1-1/2	1-1/2	1	10	086	51.95
869V-291SR	2-1/2X1-1/2	1-3/4	1	10	086	71.41
869V-333SR ¹	3X1/2	7/8	1	10	086	71.41
869V-334SR	3X3/4	7/8	1	10	086	71.41
869V-335SR	3X1	1-1/8	1	10	086	71.41
869V-336SR ¹	3X1-1/4	2-1/4	1	10	086	71.41
869V-337SR ¹	3X1-1/2	2-1/4	1	10	086	71.41
869V-338SR	3X2	2-1/4	1	10	086	71.41
869V-415SR ¹	4X1/2	1-1/8	1	10	086	88.68
869V-416SR ¹	4X3/4	1-1/8	1	10	086	88.68
869V-417SR	4X1	1-1/8	1	8	086	88.68
869V-418SR ¹	4X1-1/4	1-3/4	1	8	086	88.68
869V-419SR	4X1-1/2	1-3/4	1	8	086	88.68
869V-420SR	4X2	2-1/4	1	8	086	88.68
869V-421SR ¹	4X2-1/2	3	1	4	086	95.34
869V-422SR	4X3	3	1	4	086	100.73
869V-523SR ¹	6X1/2	1-1/8	1	4	086	150.20
869V-524SR ¹	6X3/4	1-1/8	1	4	086	150.20
869V-525SR	6X1	1-1/8	1	4	086	150.20
869V-526SR ¹	6X1-1/4	2-1/4	1	4	086	150.20
869V-527SR ¹	6X1-1/2	2-1/4	1	4	086	150.20
869V-528SR	6X2	2-1/4	1	4	086	150.20
869V-529SR ¹	6X2-1/2	3	1	4	086	181.44
869V-530SR	6X3	3	1	4	086	191.75
869V-532SR	6X4	4	1	4	086	201.42
869V-573SR ¹	8X1/2	4	1	0	086	304.19
869V-574SR ¹	8X3/4	4	1	0	086	304.19
869V-575SR ¹	8X1	4	1	0	086	304.19
869V-576SR ¹	8X1-1/4	4	1	0	086	304.19
869V-577SR ¹	8X1-1/2	4	1	0	086	304.19
869V-578SR ¹	8X2	4	1	0	086	304.19
869V-579SR ¹	8X2-1/2	4	1	0	086	334.69
869V-580SR ¹	8X3	4	1	0	086	351.46
869V-582SR	8X4	4	1	0	086	372.62
869V-585SR	8X6	6	1	0	086	433.74
869V-624SR	10X4	4	1	0	086	443.35
869V-626SR	10X6	6	1	0	086	509.84
869V-664SR	12X4	4	1	0	086	555.77
869V-666SR	12X6	6	1	0	086	646.69

¹ Outlet-sized with Bushing

Schedule 80 PVC Product
Clamp-On Saddles

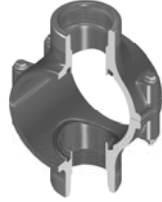


Clamp-On Saddles

Part Number	Size	Hole Saw Dia	Std Pk	Mstr Ctn	Prod Code	MSRP
-------------	------	--------------	--------	----------	-----------	------

**Clamp-On Saddle x SR Thread Double Outlet
PVC Gray**

with FKM O-ring Seal & SS Hardware



2"- 4" 235, 6" 200, 8"-12" 150 psi @ 73°F (23°C)

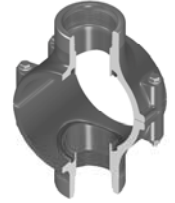
869SV-247SR	2X1/2	3/4	1	10	086	83.52
869SV-248SR	2X3/4	7/8	1	10	086	83.52
869SV-249SR	2X1	1-1/8	1	10	086	83.52
869SV-250SR	2X1-1/4	1-1/2	1	10	086	83.52
869SV-251SR	2X1-1/2	1-1/2	1	10	086	83.52
869SV-291SR	2-1/2X1-1/2	1-3/4	1	10	086	110.79
869SV-333SR ¹	3X1/2	7/8	1	10	086	110.79
869SV-335SR	3X1	1-1/8	1	10	086	110.79
869SV-334SR	3X3/4	7/8	1	10	086	110.79
869SV-336SR ¹	3X1-1/4	2-1/4	1	10	086	110.79
869SV-337SR ¹	3X1-1/2	2-1/4	1	10	086	110.79
869SV-338SR	3X2	2-1/4	1	10	086	110.79
869SV-415SR ¹	4X1/2	1-1/8	1	10	086	139.31
869SV-416SR ¹	4X3/4	1-1/8	1	10	086	139.31
869SV-417SR	4X1	1-1/8	1	8	086	139.31
869SV-418SR ¹	4X1-1/4	1-3/4	1	8	086	139.31
869SV-419SR	4X1-1/2	1-3/4	1	8	086	139.31
869SV-420SR	4X2	2-1/4	1	8	086	139.31
869SV-421SR ¹	4X2-1/2	3	1	4	086	146.71
869SV-422SR	4X3	3	1	4	086	154.19
869SV-523SR ¹	6X1/2	1-1/8	1	4	086	232.07
869SV-524SR ¹	6X3/4	1-1/8	1	4	086	232.07
869SV-525SR	6X1	1-1/8	1	4	086	232.07
869SV-526SR ¹	6X1-1/4	2-1/4	1	4	086	232.07
869SV-527SR ¹	6X1-1/2	2-1/4	1	4	086	232.07
869SV-528SR	6X2	2-1/4	1	4	086	232.07
869SV-529SR ¹	6X2-1/2	3	1	4	086	248.47
869SV-530SR	6X3	3	1	4	086	264.29
869SV-532SR	6X4	4	1	4	086	271.17
869SV-573SR ¹	8X1/2	4	1	0	086	391.86
869SV-574SR ¹	8X3/4	4	1	0	086	391.86
869SV-575SR ¹	8X1	4	1	0	086	391.86
869SV-576SR ¹	8X1-1/4	4	1	0	086	391.86
869SV-577SR ¹	8X1-1/2	4	1	0	086	391.86
869SV-578SR ¹	8X2	4	1	0	086	391.86
869SV-579SR ¹	8X2-1/2	4	1	0	086	430.95
869SV-580SR ¹	8X3	4	1	0	086	452.48
869SV-582SR	8X4	4	1	0	086	479.75
869SV-585SR	8X6	6	1	0	086	523.86
869SV-624SR	10X4	4	1	0	086	570.85
869SV-626SR	10X6	4	1	0	086	656.52
869SV-664SR	12X4	4	1	0	086	715.51
869SV-666SR	12X6	6	1	0	086	830.07

¹ Outlet-sized with Bushing

Part Number	Size	Hole Saw Dia	Std Pk	Mstr Ctn	Prod Code	MSRP
-------------	------	--------------	--------	----------	-----------	------

**Clamp-On Saddle x SR Thread Double Outlet
PVC Gray**

**with EPDM O-ring Seal & Zinc-Plated
Hardware**



2"- 4" 235, 6" 200, 8"-12" 150 psi @ 73°F (23°C)

869-247SR	2X1/2	3/4	1	10	086	46.54
869-248SR	2X3/4	7/8	1	10	086	46.54
869-249SR	2X1	1-1/8	1	10	086	46.54
869-250SR	2X1-1/4	1-1/2	1	10	086	46.54
869-251SR	2X1-1/2	1-1/2	1	10	086	46.54
869-291SR	2-1/2X1-1/2	1-3/4	1	10	086	62.67
869-333SR ¹	3X1/2	7/8	1	10	086	62.67
869-334SR	3X3/4	7/8	1	10	086	62.67
869-335SR	3X1	1-1/8	1	10	086	62.67
869-336SR ¹	3X1-1/4	1-1/8	1	10	086	62.67
869-337SR ¹	3X1-1/2	2-1/4	1	10	086	62.67
869-338SR	3X2	2-1/4	1	10	086	62.67
869-415SR ¹	4X1/2	1-1/8	1	10	086	78.36
869-416SR ¹	4X3/4	1-1/8	1	10	086	78.36
869-417SR	4X1	1-1/8	1	8	086	78.36
869-418SR ¹	4X1-1/4	1-3/4	1	8	086	78.36
869-419SR	4X1-1/2	1-3/4	1	8	086	78.36
869-420SR	4X2	2-1/4	1	8	086	78.36
869-421SR ¹	4X2-1/2	3	1	4	086	85.69
869-422SR	4X3	3	1	4	086	90.96
869-523SR ¹	6X1/2	1-1/8	1	4	086	130.58
869-524SR ¹	6X3/4	1-1/8	1	4	086	130.58
869-525SR	6X1	1-1/8	1	4	086	130.58
869-526SR ¹	6X1-1/4	2-1/4	1	4	086	130.58
869-527SR ¹	6X1-1/2	2-1/4	1	4	086	130.58
869-528SR	6X2	2-1/4	1	4	086	130.58
869-529SR ¹	6X2-1/2	3	1	4	086	161.95
869-530SR	6X3	3	1	4	086	171.51
869-532SR	6X4	4	1	4	086	191.11
869-573SR ¹	8X1/2	4	1	0	086	280.76
869-574SR ¹	8X3/4	4	1	0	086	280.76
869-575SR ¹	8X1	4	1	0	086	280.76
869-576SR ¹	8X1-1/4	4	1	0	086	280.76
869-577SR ¹	8X1-1/2	4	1	0	086	280.76
869-578SR ¹	8X2	4	1	0	086	280.76
869-579SR ¹	8X2-1/2	4	1	0	086	308.97
869-580SR ¹	8X3	4	1	0	086	324.02
869-582SR	8X4	4	1	0	086	343.64
869-585SR	8X6	6	1	0	086	388.23
869-624SR	10X4	4	1	0	086	408.82
869-626SR	10X6	6	1	0	086	470.22
869-664SR	12X4	4	1	0	086	512.72
869-666SR	12X6	6	1	0	086	594.69

¹ Outlet-sized with Bushing



Schedule 80 PVC Product
Clamp-On Saddles & Hot-Tap Saddles

Clamp-On Saddles

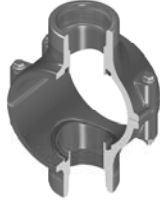
Part Number	Size	Hole Saw Dia	Std Pk	Mstr Ctn	Prod Code	MSRP
-------------	------	--------------	--------	----------	-----------	------

Clamp-On Saddle x SR Thread Double Outlet PVC Gray

with EPDM O-ring Seal & SS Hardware

2"- 4" 235, 6" 200, 8"-12" 150 psi @ 73°F (23°C)

869S-247SR	2X1/2	3/4	1	10	086	74.89
869S-248SR	2X3/4	7/8	1	10	086	74.89
869S-249SR	2X1	1-1/8	1	10	086	74.89
869S-250SR	2X1-1/4	1-1/2	1	10	086	74.89
869S-251SR	2X1-1/2	1-1/2	1	10	086	74.89
869S-291SR	2-1/2X1-1/2	1-3/4	1	10	086	99.84
869S-333SR ¹	3X1/2	7/8	1	10	086	99.84
869S-334SR	3X3/4	7/8	1	10	086	99.84
869S-335SR	3X1	1-1/8	1	10	086	99.84
869S-336SR ¹	3X1-1/4	2-1/4	1	10	086	99.84
869S-337SR ¹	3X1-1/2	2-1/4	1	10	086	99.84
869S-338SR	3X2	2-1/4	1	10	086	99.84
869S-415SR ¹	4X1/2	1-1/8	1	10	086	125.07
869S-416SR ¹	4X3/4	1-1/8	1	10	086	125.07
869S-417SR	4X1	1-1/8	1	8	086	125.07
869S-418SR ¹	4X1-1/4	1-3/4	1	8	086	125.07
869S-419SR	4X1-1/2	1-3/4	1	8	086	125.07
869S-420SR	4X2	2-1/4	1	8	086	125.07
869S-421SR ¹	4X2-1/2	3	1	4	086	133.62
869S-422SR	4X3	3	1	4	086	139.60
869S-523SR ¹	6X1/2	1-1/8	1	4	086	208.38
869S-524SR ¹	6X3/4	1-1/8	1	4	086	208.38
869S-525SR	6X1	1-1/8	1	4	086	208.38
869S-526SR ¹	6X1-1/4	2-1/4	1	4	086	208.38
869S-527SR ¹	6X1-1/2	2-1/4	1	4	086	208.38
869S-528SR	6X2	2-1/4	1	4	086	208.38
869S-529SR ¹	6X2-1/2	3	1	4	086	218.67
869S-530SR	6X3	3	1	4	086	227.64
869S-532SR	6X4	4	1	4	086	234.87
869S-573SR ¹	8X1/2	4	1	0	086	358.61
869S-574SR ¹	8X3/4	4	1	0	086	358.61
869S-575SR ¹	8X1	4	1	0	086	358.61
869S-576SR ¹	8X1-1/4	4	1	0	086	358.61
869S-577SR ¹	8X1-1/2	4	1	0	086	358.61
869S-578SR ¹	8X2	4	1	0	086	358.61
869S-579SR ¹	8X2-1/2	4	1	0	086	376.43
869S-580SR ¹	8X3	4	1	0	086	399.13
869S-582SR	8X4	4	1	0	086	423.14
869S-585SR	8X6	6	1	0	086	464.48
869S-624SR	10X4	4	1	0	086	408.82
869S-626SR	10X6	6	1	0	086	579.06
869S-664SR	12X4	4	1	0	086	631.27
869S-666SR	12X6	6	1	0	086	732.19



Hot-Tap Saddles

Part Number	Size	Std Pk	Mstr Ctn	Prod Code	MSRP
-------------	------	--------	----------	-----------	------

Hot-Tap Saddle PVC Gray

EPDM Saddle x Socket (Spigot) Zinc Plated Bolts

2"- 4" 235, 6" 200, 8" 150 psi @ 73°F (23°C)

HT2-248	2X3/4 (1)	1	5	049	56.72
HT2-251	2X1-1/2 (2)	1	5	049	117.19
HT2-288	2-1/2X3/4 (1)	1	5	049	60.62
HT2-291	2-1/2X1-1/2 (2)	1	5	049	121.08
HT2-334	3X3/4 (1)	1	5	049	69.42
HT2-337	3X1-1/2 (2)	1	5	049	133.46
HT2-416	4X3/4 (1)	1	5	049	80.18
HT2-419	4X1-1/2 (2)	1	0	049	141.12
HT2-524	6X3/4 (1)	1	5	049	90.13
HT2-527	6X1-1/2 (2)	1	0	049	150.25
HT2-574	8X3/4 (1)	1	0	049	99.74
HT2-577	8X1-1/2 (2)	1	0	049	160.20

Not intended to convey or dispense water for human consumption through drinking or cooking



Hot-Tap Saddle PVC Gray

EPDM Saddle x Socket (Spigot) SS316 Bolts

2"- 4" 235, 6" 200, 8" 150 psi @ 73°F (23°C)

HT2S-248	2X3/4 (1)	1	5	049	88.33
HT2S-251	2X1-1/2 (2)	1	5	049	182.35
HT2S-288	2-1/2X3/4 (1)	1	5	049	94.35
HT2S-291	2-1/2X1-1/2 (2)	1	5	049	188.38
HT2S-334	3X3/4 (1)	1	5	049	108.06
HT2S-337	3X1-1/2 (2)	1	5	049	207.79
HT2S-416	4X3/4 (1)	1	5	049	124.83
HT2S-419	4X1-1/2 (2)	1	0	049	219.66
HT2S-524	6X3/4 (1)	1	5	049	140.16
HT2S-527	6X1-1/2 (2)	1	0	049	233.67
HT2S-574	8X3/4 (1)	1	0	049	154.48
HT2S-577	8X1-1/2 (2)	1	0	049	248.36

Not intended to convey or dispense water for human consumption through drinking or cooking



¹ Outlet-sized with Bushing

Hot-Tap Saddles



Hot-Tap Saddles

Part Number	Size	Std Pk	Mstr Ctn	Prod Code	MSRP
-------------	------	--------	----------	-----------	------

Hot-Tap Saddle PVC Gray

FKM Saddle x Socket (Spigot) Zinc Plated Bolts



2"- 4" 235, 6" 200, 8" 150 psi @ 73°F (23°C)

HT3-248	2X3/4 (1)	1	5	049	61.61
HT3-251	2X1-1/2 (2)	1	5	049	127.13
HT3-288	2-1/2X3/4 (1)	1	5	049	65.84
HT3-291	2-1/2X1-1/2 (2)	1	5	049	131.36
HT3-334	3X3/4 (1)	1	5	049	75.28
HT3-337	3X1-1/2 (2)	1	5	049	145.03
HT3-416	4X3/4 (1)	1	5	049	87.02
HT3-419	4X1-1/2 (2)	1	0	049	151.29
HT3-524	6X3/4 (1)	1	5	049	97.78
HT3-527	6X1-1/2 (2)	1	0	049	162.64
HT3-574	8X3/4 (1)	1	0	049	108.68
HT3-577	8X1-1/2 (2)	1	0	049	192.61

Not intended to convey or dispense water for human consumption through drinking or cooking

Hot-Tap Saddle PVC Gray

FKM Saddle x Socket (Spigot) SS316 Bolts



2"- 4" 235, 6" 200, 8" 150 psi @ 73°F (23°C)

HT3S-248	2X3/4 (1)	1	5	049	95.81
HT3S-251	2X1-1/2 (2)	1	5	049	197.85
HT3S-288	2-1/2X3/4 (1)	1	5	049	102.66
HT3S-291	2-1/2X1-1/2 (2)	1	5	049	204.51
HT3S-334	3X3/4 (1)	1	5	049	117.19
HT3S-337	3X1-1/2 (2)	1	5	049	225.69
HT3S-416	4X3/4 (1)	1	5	049	135.25
HT3S-419	4X1-1/2 (2)	1	0	049	238.41
HT3S-524	6X3/4 (1)	1	5	049	152.21
HT3S-527	6X1-1/2 (2)	1	0	049	253.26
HT3S-574	8X3/4 (1)	1	0	049	168.35
HT3S-577	8X1-1/2 (2)	1	0	049	268.43

Not intended to convey or dispense water for human consumption through drinking or cooking

Part Number	Size	Std Pk	Mstr Ctn	Prod Code	MSRP
-------------	------	--------	----------	-----------	------

Hot-Tap Saddle PVC Gray

EPDM with Stainless Steel Cutter & Bolts



2"- 4" 235, 6" 200, 8" 150 psi @ 73°F (23°C)

HTS2S-248	2X3/4 (1)	1	5	049	423.12
HTS2S-251	2X1-1/2 (2)	1	5	049	637.68
HTS2S-288	2-1/2X3/4 (1)	1	5	049	452.73
HTS2S-291	2-1/2X1-1/2 (2)	1	5	049	640.01
HTS2S-334	3X3/4 (1)	1	5	049	428.51
HTS2S-337	3X1-1/2 (2)	1	5	049	649.99
HTS2S-416	4X3/4 (1)	1	5	049	464.15
HTS2S-419	4X1-1/2 (2)	1	0	049	668.66
HTS2S-524	6X3/4 (1))	1	5	049	512.78
HTS2S-527	6X1-1/2 (2)	1	0	049	735.31
HTS2S-574	8X3/4 (1)	1	0	049	731.53
HTS2S-577	8X1-1/2 (2)	1	0	049	868.69

Lead Free

Hot-Tap Saddle PVC Gray

FKM with Stainless Steel Cutter & Bolts



2"- 4" 235, 6" 200, 8" 150 psi @ 73°F (23°C)

HTS3S-248	2X3/4 (1)	1	5	049	429.82
HTS3S-251	2X1-1/2 (2)	1	5	049	649.54
HTS3S-288	2-1/2X3/4 (1)	1	5	049	459.94
HTS3S-291	2-1/2X1-1/2 (2)	1	5	049	651.80
HTS3S-334	3X3/4 (1)	1	5	049	433.73
HTS3S-337	3X1-1/2 (2)	1	5	049	665.09
HTS3S-416	4X3/4 (1)	1	5	049	473.39
HTS3S-419	4X1-1/2 (2)	1	0	049	687.16
HTS3S-524	6X3/4 (1)	1	5	049	521.97
HTS3S-527	6X1-1/2 (2)	1	0	049	752.99
HTS3S-574	8X3/4 (1)	1	0	049	738.94
HTS3S-577	8X1-1/2(2)	1	0	049	885.08

Lead Free