

Schedule 80 PVC Product
GripLoc™ Coupling & GripLoc™ Cap & PVC Flange Cut-in Kit



GripLoc™ Coupling

Part Number	Size	Std Pk	Mstr Ctn	Prod Code	MSRP
-------------	------	--------	----------	-----------	------

GripLoc™ IPS Size Release Tool (continued)

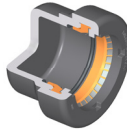
For Removal of GripLoc™ Fittings

GLIPSRT-007	3/4	1	50	299	5.00
GLIPSRT-010	1	1	50	299	5.00

GripLoc™ Cap

GripLoc™ Cap

WARNING: DO NOT INSERT FINGERS
For Cold Water Only - EPDM Gasket
Pressure Rated to 235 psi @ 73°F



Uses No Solvent Cement

GL447-005G	1/2	25	150	137	12.91
GL447-007G	3/4	10	50	137	16.73
GL447-010G	1	1	50	137	17.35
GL447-012G	1-1/4	1	25	137	22.89
GL447-015G	1-1/2	10	160	137	29.94
GL447-020G	2	1	25	137	28.94

PVC Flange Cut-in Kit

When planned system changes are needed, system downtime can be a major concern. Spears® Flange Cut-in Kit minimizes downtime for actual cut-in to allow new connection in just minutes. Kit provides all necessary components to create a flanged joint for connection to system alterations in just minutes. Special Flange Hub can be cemented to piping and allowed to cure before shutting down and cutting into system. This allows immediate joining to mating flange (included) that can also be pre-assembled to desired alteration piping.

Kit includes special Split Flange Socket Hub, O-ring Sealed Hub Body, Stainless Steel Clamp, Split Ring, Full-Faced EPDM or FKM Gasket, Mating Flange Hub & Ring, and complete set of Stainless Steel Bolts, Flat Washers and anti-seize Brass Nuts to make the final joint. Available for IPS Pipe Sizes 1-1/2" - 12".



Pressure Rated to 150 psi @ 73°F (22°C)
 Maximum Service Temperature
 PVC = 140°F (60°C)
 CPVC = 200°F (93°C)
 Temperature/Pressure De-ratings Apply

Flange Cut-in Kit

Size	EPDM Gasket	FKM Gasket	Std Pk	Mstr Pk	Prod Code
1-1/2	FCKE-015 427.68	FCKV-015 442.16	1	4	017
2	FCKE-020 442.66	FCKV-020 466.93	1	4	017
2-1/2	FCKE-025 496.18	FCKV-025 527.20	1	0	017
3	FCKE-030 556.94	FCKV-030 589.00	1	0	017
4	FCKE-040 923.43	FCKV-040 969.78	1	0	017
6	FCKE-060 1526.76	FCKV-060 1819.95	1	0	017
8	FCKE-080 1850.53	FCKV-080 2230.69	1	0	017
10	FCKE-100 3218.51	FCKV-100 3449.84	1	0	017
12	FCKE-120 3984.19	FCKV-120 4104.01	1	0	017