



Schedule 80 Repair Fittings & Compression Couplings & GripLoc™ Coupling

Schedule 80 Repair Fittings

Pipe Extenders

Part Number	Size	Std Pk	Mstr Ctn	Prod Code	MSRP
-------------	------	--------	----------	-----------	------

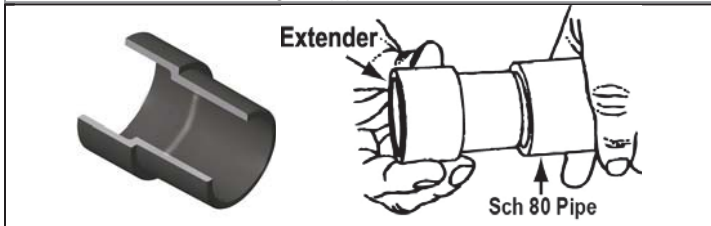
Pipe O.D. Spigot x Pipe I.D. Spigot

Fabricated, Non-Pressure Rated

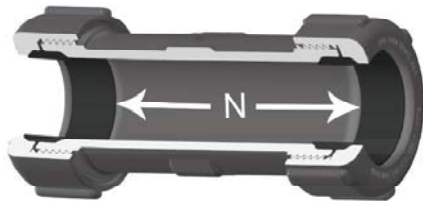
S0801-20F	2 - 2" EXT	1	10	394	81.64
S0801-25F	2-1/2 - 2" EXT	1	8	394	94.47
S0801-30F	3 - 2-1/2" EXT	1	8	394	106.92
S0801-40F	4 - 2-5/8" EXT	1	12	394	115.91
S0801-60F	6 - 3-1/2" EXT	1	10	394	154.79
S0801-80F	8 - 5" EXT	1	2	394	167.11
S0801-100F	10 - 5-1/2" EXT	1	0	394	217.48
S0801-120F	12 - 6-1/2" EXT	1	0	394	305.45
S0801-140F	14 - 7-1/4" EXT	1	0	394	866.71
S0801-160F	16 - 9" EXT	1	0	394	1014.34
S0801-180F	18 - 10" EXT	1	0	394	1331.36

Solvent Cement I.D, Spigot into Pipe O.D.

"EXT" indicates MINIMUM length of pipe extension added



Compression Couplings



- Designed for Quick Connections, System Modifications or Repairs
- Completely Redesigned for Improved Versatility
- Easy-Thread Compression Nut
- New Spigot Conversion Capability
- Full Service 200 PSI Pressure Rating
- NSF® Certified for Potable Water Use

Compression Coupling, PVC Gray

Part Number	Size	Gasket to Gasket - N	Std Pk	Mstr Ctn	Prod Code	MSRP
-------------	------	----------------------	--------	----------	-----------	------

Elastomer Gasket

S110-05G	1/2	3-3/8	28	0	024	4.57
----------	-----	-------	----	---	-----	------

Compression Coupling, PVC Gray (continued)

Part Number	Size	Gasket to Gasket - N	Std Pk	Mstr Ctn	Prod Code	MSRP
-------------	------	----------------------	--------	----------	-----------	------

Elastomer Gasket

S110-07G	3/4	3-9/16	24	0	024	6.83
S110-10G	1	3-3/4	20	0	024	8.82
S110-12G	1-1/4	4-1/8	10	0	024	13.60
S110-15G	1-1/2	4-5/8	16	0	024	14.04
S110-20G	2	5-1/16	12	0	024	18.22
S110-25G	2-1/2	5-7/8	6	0	024	34.31
S110-30G	3	6-3/16	4	0	024	44.85
S110-40G	4	7-3/8	4	0	024	73.80
S110-60G	6	7-9/16	1	0	024	167.82

N = Gasket to Gasket

Part Number	Size	Std Pk	Mstr Ctn	Prod Code	MSRP
-------------	------	--------	----------	-----------	------

Compression Coupling Nut Wrenches

Fits all Spears® Compression Fittings



CCW-005	1/2	1	50	299	13.22
CCW-007	3/4	1	50	299	13.45
CCW-010	1	1	50	299	14.02
CCW-012	1-1/4	1	50	299	15.86
CCW-015	1-1/2	1	50	299	17.11
CCW-020 ¹	2	1	50	299	19.12
CCW-030 ²	3	1	25	299	23.52
CCW-060	6	8	0	299	35.37

¹ CCW-20 - Wrench also fits 2-1/2" Coupling Body

² CCW-30 - Wrench also fits 4" Coupling Body

Compression Coupling Nut Wrench Set

Part Number	Size	Std Pk	Mstr Ctn	Prod Code	MSRP
-------------	------	--------	----------	-----------	------

Fits all Spears® Compression Fittings

CCW-000	Set	1	25	299	110.45
---------	-----	---	----	-----	--------

Complete Set of Wrenches, Sizes 1/2 - 3

GripLoc™ Coupling

GripLoc™ Coupling

WARNING: DO NOT INSERT FINGERS
For Cold Water Only - EPDM Gasket
Pressure Rated to 235 psi @ 73°F



Uses No Solvent Cement

GL429-005G	1/2	1	40	137	15.35
GL429-007G	3/4	1	36	137	19.74
GL429-010G	1	1	20	137	20.28
GL429-012G	1-1/4	1	15	137	23.46
GL429-015G	1-1/2	1	15	137	23.46
GL429-020G	2	1	10	137	24.56

GripLoc™ IPS Size Release Tool

For Removal of GripLoc™ Fittings



GLIPSRT-005	1/2	1	50	299	5.26
-------------	-----	---	----	-----	------

GripLoc™ Coupling & GripLoc™ Cap & PVC Flange Cut-in Kit



GripLoc™ Coupling

Part Number	Size	Std Pk	Mstr Ctn	Prod Code	MSRP
-------------	------	--------	----------	-----------	------

GripLoc™ IPS Size Release Tool (continued)

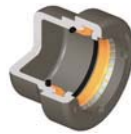
For Removal of GripLoc™ Fittings

GLIPSRT-007	3/4	1	50	299	5.26
GLIPSRT-010	1	1	50	299	5.26

GripLoc™ Cap

GripLoc™ Cap

**WARNING: DO NOT INSERT FINGERS
For Cold Water Only - EPDM Gasket
Pressure Rated to 235 psi @ 73°F**



Uses No Solvent Cement

GL447-005G	1/2	25	150	137	13.59
GL447-007G	3/4	10	50	137	17.61
GL447-010G	1	1	50	137	18.26
GL447-012G	1-1/4	1	25	137	24.09
GL447-015G	1-1/2	10	160	137	31.52
GL447-020G	2	1	25	137	30.46

PVC Flange Cut-in Kit

When planned system changes are needed, system downtime can be a major concern. Spears® Flange Cut-in Kit minimizes downtime for actual cut-in to allow new connection in just minutes. Kit provides all necessary components to create a flanged joint for connection to system alterations in just minutes. Special Flange Hub can be cemented to piping and allowed to cure before shutting down and cutting into system. This allows immediate joining to mating flange (included) that can also be pre-assembled to desired alteration piping.

Kit includes special Split Flange Socket Hub, O-ring Sealed Hub Body, Stainless Steel Clamp, Split Ring, Full-Faced EPDM or FKM Gasket, Mating Flange Hub & Ring, and complete set of Stainless Steel Bolts, Flat Washers and anti-seize Brass Nuts to make the final joint. Available for IPS Pipe Sizes 1-1/2" - 12".



Pressure Rated to 150 psi @ 73°F (22°C)
Maximum Service Temperature
PVC = 140°F (60°C)
CPVC = 200°F (93°C)
Temperature/Pressure De-ratings Apply

Flange Cut-in Kit

Size	EPDM Gasket	FKM Gasket	Std Pk	Mstr Pk	Prod Code
1-1/2	FCKE-015 450.19	FCKV-015 465.43	1	4	017
2	FCKE-020 465.96	FCKV-020 491.51	1	4	017
2-1/2	FCKE-025 522.29	FCKV-025 554.95	1	0	017
3	FCKE-030 586.25	FCKV-030 620.00	1	0	017
4	FCKE-040 972.03	FCKV-040 1020.82	1	0	017
6	FCKE-060 1607.12	FCKV-060 1915.74	1	0	017
8	FCKE-080 1947.93	FCKV-080 2348.09	1	0	017
10	FCKE-100 3387.91	FCKV-100 3631.41	1	0	017
12	FCKE-120 4193.88	FCKV-120 4320.01	1	0	017