

GripLoc™ Coupling & GripLoc™ Cap & PVC Flange Cut-in Kit



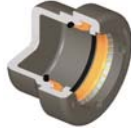
GripLoc™ Coupling

Part Number	Size	Std Pk	Mstr Ctn	Prod Code	MSRP
GripLoc™ IPS Size Release Tool (continued)					
For Removal of GripLoc™ Fittings					
GLIPSRT-007	3/4	1	50	299	5.26
GLIPSRT-010	1	1	50	299	5.26

GripLoc™ Cap

GripLoc™ Cap

**WARNING: DO NOT INSERT FINGERS
For Cold Water Only - EPDM Gasket
Pressure Rated to 235 psi @ 73°F**



Uses No Solvent Cement

GL447-005G	1/2	25	150	137	13.59
GL447-007G	3/4	10	50	137	17.61
GL447-010G	1	1	50	137	18.26
GL447-012G	1-1/4	1	25	137	24.09
GL447-015G	1-1/2	10	160	137	31.52
GL447-020G	2	1	25	137	30.46

PVC Flange Cut-in Kit

When planned system changes are needed, system downtime can be a major concern. Spears® Flange Cut-in Kit minimizes downtime for actual cut-in to allow new connection in just minutes. Kit provides all necessary components to create a flanged joint for connection to system alterations in just minutes. Special Flange Hub can be cemented to piping and allowed to cure before shutting down and cutting into system. This allows immediate joining to mating flange (included) that can also be pre-assembled to desired alteration piping.

Kit includes special Split Flange Socket Hub, O-ring Sealed Hub Body, Stainless Steel Clamp, Split Ring, Full-Faced EPDM or FKM Gasket, Mating Flange Hub & Ring, and complete set of Stainless Steel Bolts, Flat Washers and anti-seize Brass Nuts to make the final joint. Available for IPS Pipe Sizes 1-1/2" - 12".



Pressure Rated to 150 psi @ 73°F (22°C)

Maximum Service Temperature

PVC = 140°F (60°C)

CPVC = 200°F (93°C)

Temperature/Pressure De-ratings Apply

Flange Cut-in Kit

Size	EPDM Gasket	FKM Gasket	Std Pk	Mstr Pk	Prod Code
1-1/2	FCKE-015 450.19	FCKV-015 465.43	1	4	017
2	FCKE-020 465.96	FCKV-020 491.51	1	4	017
2-1/2	FCKE-025 522.29	FCKV-025 554.95	1	0	017
3	FCKE-030 586.25	FCKV-030 620.00	1	0	017
4	FCKE-040 972.03	FCKV-040 1020.82	1	0	017
6	FCKE-060 1607.12	FCKV-060 1915.74	1	0	017
8	FCKE-080 1947.93	FCKV-080 2348.09	1	0	017
10	FCKE-100 3387.91	FCKV-100 3631.41	1	0	017
12	FCKE-120 4193.88	FCKV-120 4320.01	1	0	017