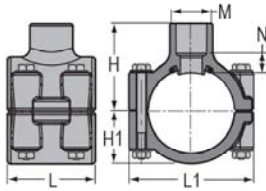


Schedule 80 CPVC Technical
Schedule 80 CPVC Saddles



**Clamp-On Saddle x Socket
 Single Outlet, CPVC Gray**

with EPDM O-ring Seal & Zinc-Plated Hardware
 2"- 4" 235, 6" 200, 8"-12" 150 psi @ 73°F (23°C)
 Dimensions Also Applicable to
 866S-XXXC, 866V-XXXC & 866SV-XXXC



Part Number	Size	H	H1	L	L1	M	N	Bolt Torque FT./LBS.	Hole Size	No of Bolts	Approx. Wt. (Lbs.)
866-247C	2X1/2	2- 3/8	1- 1/2	2- 7/16	3- 7/16	1- 3/16	5/16	8	3/4	4	.63
866-248C	2X3/4	2- 1/2	1- 1/2	2- 7/16	3- 7/16	1- 3/8	5/16	8	7/8	4	.64
866-249C	2X1	2- 5/8	1- 1/2	2- 7/16	3- 7/16	1-11/16	5/16	8	1-1/8	4	.66
866-250C	2X1-1/4	2- 3/4	1- 1/2	2- 7/16	3- 7/16	2- 1/16	5/16	8	1-1/2	4	.68
866-251C	2X1-1/2	2-15/16	1- 1/2	2- 7/16	3- 7/16	2- 3/8	5/16	8	1-1/2	4	.74
866-291C	2-1/2X1-1/2	3- 3/16	1-11/16	4- 1/16	4	2- 3/8	3/8	8	7/8	4	1.10
866-333C ¹	3X1/2	3- 5/16	2- 1/16	3	4- 5/8	1- 3/8	13/16	8	7/8	4	.94
866-334C	3X3/4	3- 1/16	2- 1/16	3	4- 5/8	1- 3/8	9/32	8	1-1/8	4	.91
866-335C	3X1	3- 3/16	2- 1/16	3	4- 5/8	1-11/16	5/16	8	2-1/4	4	.93
866-336C ¹	3X1-1/4	4- 1/32	2- 1/16	4- 3/32	4- 5/8	3	1- 1/32	8	2-1/4	4	1.51
866-337C ¹	3X1-1/2	4- 1/32	2- 1/16	4- 3/32	4- 5/8	3	29/32	8	2-1/4	4	1.46
866-338C	3X2	3- 5/8	2- 1/16	4- 3/32	4- 5/8	3	3/8	8	1-1/8	4	1.31
866-415C ¹	4X1/2	4- 3/32	2- 5/8	3	5- 9/16	2- 3/8	31/32	8	1-1/8	4	1.38
866-416C ¹	4X3/4	4- 3/32	2- 5/8	3	5- 9/16	2- 3/8	27/32	8	1-1/8	4	1.35
866-417C	4X1	3-13/16	2- 5/8	3	5- 5/8	1-11/16	7/16	8	1-1/8	4	1.32
866-418C ¹	4X1-1/4	4-13/32	2- 5/8	4- 3/32	5- 5/8	2- 3/8	29/32	8	1-3/4	4	1.74
866-419C	4X1-1/2	4- 1/8	2- 5/8	4- 3/32	5- 9/16	2- 3/8	1/2	8	1-3/4	4	1.68
866-420C	4X2	4- 3/16	2- 5/8	4- 1/8	5- 5/8	3	7/16	8	2-1/4	4	1.80
866-421C ¹	4X2-1/2	5	2- 5/8	5- 7/16	5-23/32	4- 9/32	3/4	8	3	4	2.97
866-422C	4X3	4- 5/8	2-19/32	5- 7/16	5-11/16	4- 1/4	1/2	8	3	4	2.56
866-523C ¹	6X1/2	5-13/32	3- 7/8	3	7- 3/4	1-11/16	1- 7/32	10	1-1/8	4	2.50
866-524C ¹	6X3/4	5- 7/16	3- 7/8	3	7- 3/4	1-11/16	1- 1/8	10	1-1/8	4	2.47
866-525C	6X1	5- 1/8	3- 7/8	3	7-15/16	1-11/16	11/16	10	1-1/8	4	2.43
866-526C ¹	6X1-1/4	5-15/16	3- 7/8	4- 1/8	7- 3/4	3	1- 3/8	10	2-1/4	4	3.44
866-527C ¹	6X1-1/2	5-15/16	3- 7/8	4- 1/8	7- 3/4	3	1- 1/4	10	2-1/4	4	3.39
866-528C	6X2	5- 1/2	3- 7/8	4- 1/8	7- 3/4	3	11/16	10	2-1/4	4	3.24
866-529C ¹	6X2-1/2	6-7/16	3-7/8	6	7-15/16	4-1/4	1-1/8	10	2-1/4	4	5.05
866-530C	6X3	5-15/16	3- 7/8	6	7-15/16	4- 1/4	25/32	10	3	4	4.64
866-532C	6X4	6	3-29/32	6	7-15/16	5- 3/16	5/8	10	4	6	5.45
866-573C ¹	8X1/2	7- 3/4	4- 7/8	8-1/2	9-7/8	5- 5/16	1- 1/2	10	4	6	8.67
866-574C ¹	8X3/4	8- 3/32	4- 7/8	8- 1/2	9-7/8	5- 1/4	2- 3/4	10	4	6	10.15
866-575C ¹	8X1	8- 3/32	4- 7/8	8- 1/2	9-7/8	5- 1/4	2- 5/8	10	4	6	8.62
866-576C ¹	8X1-1/4	8- 3/32	4- 7/8	8- 1/2	9-7/8	5- 1/4	2- 1/2	10	4	6	10.34
866-577C ¹	8X1-1/2	8- 3/32	4- 7/8	8- 1/2	9-7/8	5- 1/4	2- 3/8	10	4	6	10.31
866-578C	8X2	6-1/2	4- 7/8	8- 1/2	10	3	11/16	10	4	6	8.37
866-579C ¹	8X2-1/2	8- 5/32	4- 7/8	8-1/2	9-7/8	5- 7/32	2- 1/2	10	4	6	9.85
866-580C ¹	8X3	7-11/16	4- 7/8	8- 1/2	9- 7/8	5- 7/32	2- 1/16	10	4	6	9.64
866-582C	8X4	7- 5/16	4- 7/8	8- 1/2	9-7/8	5- 1/4	11/16	10	4	6	8.78
866-585C	8X6	8- 3/32	4- 7/8	8- 1/2	9-7/8	7- 5/8	11/16	10	6	6	10.12
866-624C	10X4	8-15/32	6- 1/32	8- 1/2	12- 5/16	5- 1/4	13/16	10	4	6	12.73
866-626C	10X6	9- 9/32	6- 1/32	8- 1/2	12- 5/16	7- 5/8	13/16	10	6	6	13.73
866-664C	12X4	9- 9/16	7- 5/32	8- 1/2	14- 5/16	5- 1/4	7/8	10	4	6	16.43

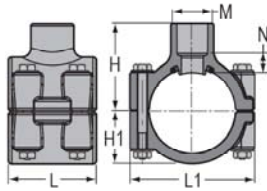


Schedule 80 CPVC Technical
Schedule 80 CPVC Saddles

**Clamp-On Saddle x Socket
 Single Outlet, CPVC Gray**

(Continued)

with EPDM O-ring Seal & Zinc-Plated Hardware
 2" - 4" 235, 6" 200, 8"-12" 150 psi @ 73°F (23°C)
 Dimensions Also Applicable to
 866S-XXXC, 866V-XXXC & 866SV-XXXC

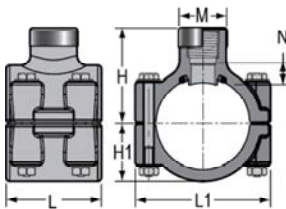


Part Number	Size	H	H1	L	L1	M	N	Bolt Torque FT./LBS.	Hole Size	No of Bolts	Approx. Wt. (Lbs.)
866-666C	12X6	10- 3/8	7- 5/32	8- 1/2	14- 5/16	7- 5/8	7/8	10	6	6	17.43

¹ Outlet-sized with Bushing

**Clamp-On Saddle x SR Thread
 Single Outlet, CPVC Gray**

with EPDM O-ring Seal & Zinc-Plated Hardware
 2" - 4" 235, 6" 200, 8"-12" 150 psi @ 73°F (23°C)
 Dimensions Also Applicable to
 867S-XXXCSR, 867V-XXXCSR
 & 867SV-XXXCSR



Part Number	Size	H	H1	L	L1	M	N	Bolt Torque FT./LBS.	Hole Size	No of Bolts	Approx. Wt. (Lbs.)
867-247CSR	2X1/2	2- 3/8	1- 1/2	2- 7/16	3- 7/16	1- 3/16	5/16	8	3/4	3/4	.64
867-248CSR	2X3/4	2- 1/2	1- 1/2	2- 7/16	3- 7/16	1- 3/8	5/8	8	7/8	7/8	.66
867-249CSR	2X1	2- 5/8	1- 1/2	2- 7/16	3- 7/16	1-11/16	9/16	8	1-1/8	1-1/8	.68
867-250CSR	2X1-1/4	2- 3/4	1- 1/2	2- 7/16	3- 7/16	2- 1/16	11/16	8	1-1/2	1-1/2	.73
867-251CSR	2X1-1/2	2-15/16	1- 1/2	2- 7/16	3- 7/16	2- 3/8	3/4	8	1-1/2	1-1/2	.79
867-291CSR	2-1/2X1-1/2	3- 3/16	1-11/16	4- 1/16	4	2- 3/8	13/16	8	1-3/4	1-3/4	1.17
867-333CSR ¹	3X1/2	3- 5/16	2- 1/16	3	4- 5/8	1- 3/8	15/16	8	7/8	7/8	.96
867-334CSR	3X3/4	3- 1/16	2- 1/16	3	4- 5/8	1- 3/8	9/16	8	7/8	7/8	.93
867-335CSR	3X1	3- 3/16	2- 1/16	3	4- 5/8	1-11/16	9/16	8	1-1/8	1-1/8	.96
867-336CSR ¹	3X1-1/4	4- 1/32	2- 1/16	4- 3/32	4- 5/8	3	1- 5/16	8	2-1/4	2-1/4	1.60
867-337CSR ¹	3X1-1/2	4- 1/32	2- 1/16	4- 3/32	4- 5/8	3	2-11/16	8	2-1/4	2-1/4	1.55
867-338CSR	3X2	3-11/16	2	4-1/8	4-3/4	3	15/16	8	2-1/4	4	1.43
867-415CSR ¹	4X1/2	4- 3/32	2- 5/8	3	5- 9/16	2- 3/8	1- 1/8	8	1-1/8	1-1/8	1.39
867-416CSR ¹	4X3/4	4- 3/32	2- 5/8	3	5- 9/16	2- 3/8	1- 1/8	8	1-1/8	1-1/8	1.39
867-417CSR	4X1	3-13/16	2- 5/8	3	5- 5/8	1-11/16	11/16	8	1-1/8	1-1/8	1.35
867-418CSR ¹	4X1-1/4	4-13/32	2- 5/8	4- 3/32	5- 5/8	2- 3/8	1- 7/32	8	1-3/4	1-3/4	1.80
867-419CSR	4X1-1/2	4- 1/8	2- 5/8	4- 3/32	5- 9/16	2- 3/8	15/16	8	1-3/4	1-3/4	1.79
867-420CSR	4X2	4- 3/16	2- 5/8	4- 1/8	5- 5/8	3	15/16	8	2-1/4	2-1/4	1.88
867-421CSR ¹	4X2-1/2	5	2- 5/8	5- 7/16	5-23/32	4- 9/32	1- 7/32	8	3	3	3.13
867-422CSR	4X3	4- 5/8	2-19/32	5- 7/16	5-11/16	4- 1/4	31/32	8	3	3	2.76
867-523CSR ¹	6X1/2	5-13/32	3- 7/8	3	7- 3/4	1-11/16	1- 3/8	8	1-1/8	1-1/8	2.51
867-524CSR ¹	6X3/4	5- 7/16	3- 7/8	3	7- 3/4	1-11/16	1- 3/8	10	1-1/8	1-1/8	2.51
867-525CSR	6X1	5- 1/8	3- 7/8	3	7-15/16	1-11/16	15/16	10	1-1/8	1-1/8	2.47
867-526CSR ¹	6X1-1/4	5-15/16	3- 7/8	4- 1/8	7- 3/4	3	1-11/16	10	2-1/4	2-1/4	3.53
867-527CSR ¹	6X1-1/2	5-15/16	3- 7/8	4- 1/8	7- 3/4	3	1- 3/4	10	2-1/4	2-1/4	3.48
867-528CSR	6X2	5- 1/2	3- 7/8	4- 1/8	7- 3/4	3	1- 7/32	10	2-1/4	2-1/4	3.33
867-529CSR ¹	6X2-1/2	6- 7/16	3- 7/8	6	7-15/16	4- 1/4	1- 9/16	10	3	3	5.21
867-530CSR	6X3	5-15/16	3- 7/8	6	7-15/16	4- 1/4	1- 1/4	10	3	3	4.79

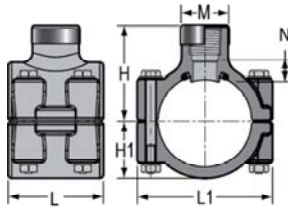
Schedule 80 CPVC Technical
Schedule 80 CPVC Saddles



**Clamp-On Saddle x SR Thread
 Single Outlet, CPVC Gray**

(Continued)

with EPDM O-ring Seal & Zinc-Plated Hardware
 2" - 4" 235, 6" 200, 8"-12" 150 psi @ 73°F (23°C)
 Dimensions Also Applicable to
 867S-XXXCSR, 867V-XXXCSR
 & 867SV-XXXCSR

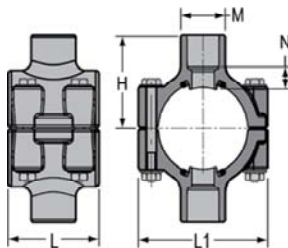


Part Number	Size	H	H1	L	L1	M	N	Bolt Torque FT./LBS.	Hole Size	No of Bolts	Approx. Wt. (Lbs.)
867-532CSR	6X4	6	3-29/32	6	7-15/16	5-3/16	1-3/8	10	4	4	5.79
867-573CSR ¹	8X1/2	8-3/32	4-7/8	8-1/2	10-1/8	5-1/4	3	10	4	4	8.66
867-574CSR	8X3/4	8-3/32	4-7/8	8-1/2	10-1/8	5-1/4	3	10	4	4	8.65
867-575CSR ¹	8X1	8-3/32	4-7/8	8-1/2	10-1/8	5-1/4	2-13/16	10	4	4	8.66
867-576CSR ¹	8X1-1/4	9-5/16	4-15/16	8-9/16	9-29/32	5-7/32	1-19/32	10	4	4	8.66
867-577CSR ¹	8X1-1/2	8-3/32	4-7/8	8-1/2	10-1/8	5-1/4	2-3/4	10	4	4	8.61
867-578CSR ¹	8X2	7-11/16	4-7/8	8-1/2	10-1/8	5-1/4	2-3/8	10	4	4	8.38
867-579CSR ¹	8X2-1/2	8-1/8	4-7/8	8-1/2	10-1/8	5-1/4	2-1/2	10	4	4	9.93
867-580CSR ¹	8X3	7-11/16	4-7/8	8-1/2	10-1/8	5-1/4	1-15/16	10	4	4	9.71
867-582CSR	8X4	7-5/16	4-7/8	8-1/2	10-1/8	5-1/4	1-1/2	10	4	4	9.09
867-585CSR	8X6	8-3/32	4-7/8	8-1/2	10-1/8	7-5/8	2-3/32	10	6	6	10.62
867-624CSR	10X4	8-15/32	6-1/32	8-1/2	12-5/16	5-1/4	2-3/16	10	4	4	12.98
867-626CSR	10X6	9-9/32	6-1/32	8-1/2	12-5/16	7-5/8	3-3/16	10	6	6	14.39
867-664CSR	12X4	9-9/16	7-5/32	8-1/2	14-5/16	5-1/4	1-5/8	10	4	4	16.62
867-666CSR	12X6	10-3/8	7-5/32	8-1/2	14-5/16	7-5/8	2-1/4	10	6	6	18.07

¹ Outlet-sized with Bushing

**Clamp-On Saddle x Socket
 Double Outlet, CPVC Gray**

with EPDM O-ring Seal & Zinc-Plated Hardware
 2" - 4" 235, 6" 200, 8"-12" 150 psi @ 73°F (23°C)
 Dimensions Also Applicable to
 868S-XXXC, 868V-XXXC & 868SV-XXXC



Part Number	Size	H	L	L1	M	N	Bolt Torque FT./LBS.	Hole Size	No of Bolts	Approx. Wt. (Lbs.)
868-247C	2X1/2	2-3/8	2-7/16	3-7/16	1-3/16	5/16	8	3/4	4	.66
868-248C	2X3/4	2-1/2	2-7/16	3-7/16	1-3/8	5/16	8	7/8	4	.67
868-249C	2X1	2-5/8	2-7/16	3-7/16	1-11/16	5/16	8	1-1/8	4	.72
868-250C	2X1-1/4	2-3/4	2-7/16	3-7/16	2-1/16	5/16	8	1-1/2	4	.75
868-251C	2X1-1/2	2-15/16	2-7/16	3-7/16	2-3/8	5/16	8	1-1/2	4	.88
868-291C	2-1/2X1-1/2	3-3/16	4-1/16	4	2-3/8	3/8	8	1-3/4	4	1.25
868-333C ¹	3X1/2	3-5/16	3	4-5/8	1-3/8	13/16	8	7/8	4	1.01
868-334C	3X3/4	3-1/16	3	4-5/8	1-3/8	9/32	8	7/8	4	.94
868-335C	3X1	3-3/16	3	4-5/8	1-11/16	5/16	8	1-1/8	4	.99
868-336C ¹	3X1-1/4	4-1/32	4-3/32	4-5/8	3	1-1/32	8	2-1/4	4	1.95
868-337C ¹	3X1-1/2	4-1/32	4-3/32	4-5/8	3	29/32	8	2-1/4	4	1.85
868-338C	3X2	3-5/8	4-3/32	4-5/8	3	3/8	8	2-1/4	4	1.54
868-415C ¹	4X1/2	4-3/32	3	5-9/16	2-3/8	31/32	8	1-1/8	4	1.52
868-416C ¹	4X3/4	4-3/32	3	5-9/16	2-3/8	27/32	8	1-1/8	4	1.45

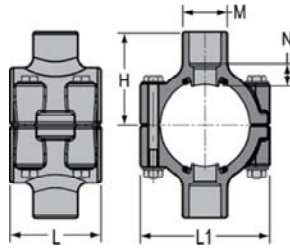


Schedule 80 CPVC Technical
Schedule 80 CPVC Saddles

**Clamp-On Saddle x Socket
 Double Outlet, CPVC Gray**

(Continued)

with EPDM O-ring Seal & Zinc-Plated Hardware
 2" - 4" 235, 6" 200, 8"-12" 150 psi @ 73°F (23°C)
 Dimensions Also Applicable to
 868S-XXXC, 868V-XXXC & 868SV-XXXC



Part Number	Size	H	L	L1	M	N	Bolt Torque FT./LBS.	Hole Size	No of Bolts	Approx. Wt. (Lbs.)
868-417C	4X1	3-13/16	3	5- 5/8	1-11/16	7/16	8	1-1/8	4	1.38
868-418C ¹	4X1-1/4	4-13/32	4- 3/32	5- 5/8	2- 3/8	29/32	8	1-3/4	4	1.91
868-419C	4X1-1/2	4- 1/8	4- 3/32	5- 9/16	2- 3/8	1/2	8	1-3/4	4	1.78
868-420C	4X2	4- 3/16	4- 1/8	5- 5/8	3	7/16	8	2-1/4	4	2.02
868-421C ¹	4X2-1/2	5	5- 7/16	5-23/32	4- 9/32	3/4	8	3	4	3.94
868-422C	4X3	4- 5/8	5- 7/16	5-11/16	4- 1/4	1/2	8	3	4	3.12
868-523C ¹	6X1/2	5-13/32	3	7- 3/4	1-11/16	1- 7/32	8	1-1/8	4	2.63
868-524C ¹	6X3/4	5- 7/16	3	7- 3/4	1-11/16	1- 1/8	10	1-1/8	4	2.57
868-525C	6X1	5- 1/8	3	7-15/16	1-11/16	11/16	10	1-1/8	4	2.50
868-526C ¹	6X1-1/4	5-15/16	4- 1/8	7- 3/4	3	1- 3/8	10	2-1/4	4	3.86
868-527C ¹	6X1-1/2	5-15/16	4- 1/8	7- 3/4	3	1- 1/4	10	2-1/4	4	3.75
868-528C	6X2	5- 1/2	4- 1/8	7- 3/4	3	11/16	10	2-1/4	4	3.45
868-529C ¹	6X2-1/2	6- 7/16	6	7-15/16	4- 1/4	1- 1/8	10	3	4	5.97
868-530C	6X3	5-15/16	6	7-15/16	4- 1/4	25/32	10	3	4	5.15
868-532C	6X4	6	6	7-15/16	5- 3/16	5/8	10	4	6	6.00
868-573C ¹	8X1/2	8- 3/32	8- 1/2	10- 1/8	5- 1/4	2- 3/16	10	4	6	9.20
868-574C ¹	8X3/4	8- 3/32	8- 1/2	10- 1/8	5- 1/4	2- 3/4	10	4	6	12.17
868-575C ¹	8X1	8- 3/32	8- 1/2	10- 1/8	5- 1/4	2- 5/8	10	4	6	9.11
868-576C ¹	8X1-1/4	8- 3/32	8- 1/2	10- 1/8	5- 1/4	2- 1/2	10	4	6	12.54
868-577C ¹	8X1-1/2	8- 3/32	8- 1/2	10- 1/8	5- 1/4	2- 3/8	10	4	6	12.47
868-578C ¹	8X2	7-11/16	8- 1/2	10- 1/8	5- 1/4	1- 7/8	10	4	6	11.62
868-579C ¹	8X2-1/2	8- 1/8	8- 1/2	10- 1/8	5- 1/4	1-11/16	10	4	6	11.56
868-580C ¹	8X3	7-11/16	8- 1/2	9- 7/8	5- 7/32	2- 1/16	10	4	6	11.13
868-582C	8X4	7- 5/16	8- 1/2	10- 1/8	5- 1/4	11/16	10	4	6	9.42
868-585C	8X6	8- 3/32	8- 1/2	10- 1/8	7- 5/8	11/16	10	6	6	12.10
868-624C	10X4	8-15/32	8- 1/2	12- 5/16	5- 1/4	13/16	10	4	6	13.31
868-626C	10X6	9- 9/32	8- 1/2	12- 5/16	7- 5/8	13/16	10	6	6	15.30
868-664C	12X4	9- 9/16	8- 1/2	14- 5/16	5- 1/4	7/8	10	4	6	16.94
868-666C	12X6	10- 3/8	8- 1/2	14- 5/16	7- 5/8	7/8	10	6	6	18.94

¹ Outlet-sized with Bushing



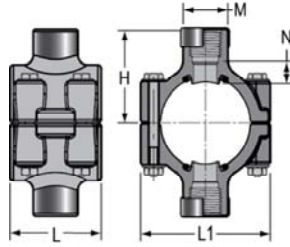
Schedule 80 CPVC Technical
Schedule 80 CPVC Saddles



**Clamp-On Saddle x SR Thread
 Double Outlet, CPVC Gray**

with EPDM O-ring Seal & Zinc-Plated Hardware
 2"- 4" 235, 6" 200, 8"-12" 150 psi @ 73°F (23°C)

Dimensions Also Applicable to
 869S-XXXCSR, 869V-XXXCSR
 & 869SV-XXXCSR



Part Number	Size	H	L	L1	M	N	Bolt Torque FT./LBS.	Hole Size	No of Bolts	Approx. Wt. (Lbs.)
869-247CSR	2X1/2	2- 3/8	2- 7/16	3- 7/16	1- 3/16	5/16	8	3/4	3/4	.68
869-248CSR	2X3/4	2- 1/2	2- 7/16	3- 7/16	1- 3/8	5/8	8	7/8	7/8	.72
869-249CSR	2X1	2- 5/8	2- 7/16	3- 7/16	1-11/16	9/16	8	1-1/8	1-1/8	.76
869-250CSR	2X1-1/4	2- 3/4	2- 7/16	3- 7/16	2- 1/16	11/16	8	1-1/2	1-1/2	.85
869-251CSR	2X1-1/2	2-15/16	2- 7/16	3- 7/16	2- 3/8	3/4	8	1-1/2	1-1/2	.97
869-291CSR	2-1/2X1-1/2	3- 3/16	4- 1/16	4	2- 3/8	13/16	8	1-3/4	1-3/4	1.39
869-333CSR ¹	3X1/2	3- 5/16	3	4- 5/8	1- 3/8	15/16	8	7/8	7/8	1.03
869-334CSR	3X3/4	3- 1/16	3	4- 5/8	1- 3/8	9/16	8	7/8	7/8	.98
869-335CSR	3X1	3- 3/16	3	4- 5/8	1-11/16	9/16	8	1-1/8	1-1/8	1.05
869-336CSR ¹	3X1-1/4	4- 1/32	4- 3/32	4- 5/8	3	1- 5/16	8	2-1/4	2-1/4	2.12
869-337CSR ¹	3X1-1/2	4- 1/32	4- 3/32	4- 5/8	3	2-11/16	8	2-1/4	2-1/4	2.02
869-338CSR	3X2	3- 5/8	4- 3/32	4- 5/8	3	7/8	8	2-1/4	2-1/4	1.78
869-415CSR ¹	4X1/2	4- 3/32	3	5- 9/16	2- 3/8	1- 1/8	8	1-1/8	1-1/8	1.53
869-416CSR ¹	4X3/4	4- 3/32	3	5- 9/16	2- 3/8	1- 1/8	8	1-1/8	1-1/8	1.53
869-417CSR	4X1	3-13/16	3	5- 5/8	1-11/16	11/16	8	1-1/8	1-1/8	1.45
869-418CSR ¹	4X1-1/4	4-13/32	4- 3/32	5- 5/8	2- 3/8	1- 7/32	8	1-3/4	1-3/4	2.03
869-419CSR	4X1-1/2	4- 1/8	4- 3/32	5- 9/16	2- 3/8	15/16	8	1-3/4	1-3/4	2.00
869-420CSR	4X2	4- 3/16	4- 1/8	5- 5/8	3	15/16	8	2-1/4	2-1/4	2.18
869-421CSR ¹	4X2-1/2	5	5- 7/16	5-23/32	4- 9/32	1- 7/32	8	3	3	4.27
869-422CSR	4X3	4- 5/8	5- 7/16	5-11/16	4- 1/4	31/32	8	3	3	3.53
869-523CSR ¹	6X1/2	5-13/32	3	7- 3/4	1-11/16	1- 3/8	8	1-1/8	1-1/8	2.65
869-524CSR ¹	6X3/4	5- 7/16	3	7- 3/4	1-11/16	1- 3/8	10	1-1/8	1-1/8	2.64
869-525CSR	6X1	5- 1/8	3	7-15/16	1-11/16	15/16	10	1-1/8	1-1/8	2.57
869-526CSR ¹	6X1-1/4	5-15/16	4- 1/8	7- 3/4	3	1-11/16	10	2-1/4	2-1/4	4.02
869-527CSR ¹	6X1-1/2	5-15/16	4- 1/8	7- 3/4	3	1- 3/4	10	2-1/4	2-1/4	3.93
869-528CSR	6X2	5- 1/2	4- 1/8	7- 3/4	3	1- 7/32	10	2-1/4	2-1/4	3.63
869-529CSR ¹	6X2-1/2	6- 7/16	6	7-15/16	4- 1/4	1- 9/16	10	3	3	6.30
869-530CSR	6X3	5-15/16	6	7-15/16	4- 1/4	1- 1/4	10	3	3	5.46
869-532CSR	6X4	6	6	7-15/16	5- 3/16	1- 3/8	10	4	4	6.68
869-573CSR ¹	8X1/2	8- 3/32	8- 1/2	10- 1/8	5- 1/4	3	10	4	4	9.17
869-574CSR ¹	8X3/4	8- 3/32	8- 1/2	10- 1/8	5- 1/4	3	10	4	4	9.16
869-575CSR ¹	8X1	8- 3/32	8- 1/2	10- 1/8	5- 1/4	2-13/16	10	4	4	9.17
869-576CSR ¹	8X1-1/4	8- 3/32	8- 1/2	10- 1/8	5- 1/4	2- 3/4	10	4	4	9.19
869-577CSR ¹	8X1-1/2	8- 3/32	8- 1/2	10- 1/8	5- 1/4	2- 3/4	10	4	4	9.09
869-578CSR ¹	8X2	7-11/16	8- 1/2	10- 1/8	5- 1/4	2- 3/8	10	4	4	8.62
869-579CSR ¹	8X2-1/2	8- 1/8	8- 1/2	10- 1/8	5- 1/4	2- 1/2	10	4	4	11.72
869-580CSR ¹	8X3	7-11/16	8- 1/2	10- 1/8	5- 1/4	1-15/16	10	4	4	11.27
869-582CSR	8X4	7- 5/16	8- 1/2	10- 1/8	5- 1/4	1- 1/2	10	4	4	10.03
869-585CSR	8X6	8- 3/32	8- 1/2	10- 1/8	7- 5/8	2- 3/32	10	6	6	13.10
869-624CSR	10X4	8-15/32	8- 1/2	12- 5/16	5- 1/4	2- 3/16	10	4	4	13.81
869-626CSR	10X6	9- 9/32	8- 1/2	12- 5/16	7- 5/8	3- 3/16	10	6	6	16.62
869-664CSR	12X4	9- 9/16	8- 1/2	14- 5/16	5- 1/4	1- 5/8	10	4	4	17.31

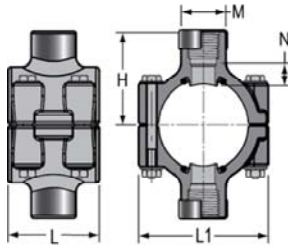


Schedule 80 CPVC Technical
Schedule 80 CPVC Saddles

**Clamp-On Saddle x SR Thread
 Double Outlet, CPVC Gray**

(Continued)

with EPDM O-ring Seal & Zinc-Plated Hardware
 2" - 4" 235, 6" 200, 8"-12" 150 psi @ 73°F (23°C)
 Dimensions Also Applicable to
 869S-XXXCSR, 869V-XXXCSR
 & 869SV-XXXCSR



Part Number	Size	H	L	L1	M	N	Bolt Torque FT./LBS.	Hole Size	No of Bolts	Approx. Wt. (Lbs.)
869-666CSR	12X6	10- 3/8	8- 1/2	14- 5/16	7- 5/8	2- 1/4	10	6	6	20.22

¹ Outlet-sized with Bushing

