

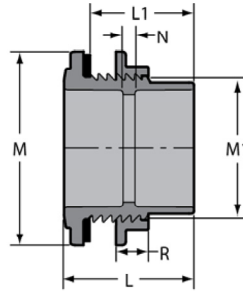
Schedule 80 CPVC Technical  
**Schedule 80 CPVC Tank Adapters**



**Tank Adapters, CPVC New  
 Style Standard with Neoprene  
 Gaskets**

Socket x Socket  
 150 psi Maximum Internal Pressure Rating @ 73°  
 F (23°C)

Dimensions Also Applicable to  
 8170E-XXXX & 8170V-XXXX

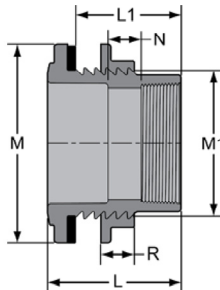


Part Number	Size	L	L1	M	M1	N	R	Min Hole Size	Approx. Wt. (Lbs.)
8170-002C	1/4	2- 1/2	1-13/16	1- 1/2	1- 1/16	1- 3/16	1/2	1-1/16	.11
8170-003C	3/8	2- 1/2	1-27/32	1- 5/8	31/32	7/8	1/2	1-3/16	.11
8170-005C	1/2	2-15/16	2- 3/16	2- 1/16	1-15/32	1- 1/8	5/8	1-1/2	.22
8170-007C	3/4	2-15/16	2- 3/16	2- 1/4	1- 5/8	15/16	5/8	1-3/4	.25
8170-010C	1	3- 5/16	2- 9/16	2- 5/8	2	1- 1/16	5/8	2	.37
8170-012C	1-1/4	3- 7/16	2- 5/8	3- 1/8	2- 5/16	15/16	5/8	2-3/8	.48
8170-015C	1-1/2	3- 5/8	2-13/16	3- 5/8	2-11/16	13/16	5/8	2-3/4	.66
8170-020C	2	4- 1/8	3- 1/4	4- 7/8	3- 1/4	1- 1/16	3/4	3-3/8	1.29
8170-025C	2-1/2	4-27/32	3- 7/8	5- 1/4	3- 9/16	29/32	1	3-7/8	1.22
8170-030C	3	5- 1/2	4- 1/2	6	4- 9/16	1-11/16	1	4-5/8	2.61
8170-040C	4	5	4	7- 1/2	5- 1/2	7/16	1- 1/4	5-1/2	3.21
8170-060C	6	5	4	10-3/32	8	1/8	1-1/4	8	5.76
8170-080C	8	8- 5/8	7	12-15/16	10- 1/4	1/2	1- 1/2	10-3/8	17.30

**Tank Adapters, CPVC New  
 Style Standard with Neoprene  
 Gaskets**

Socket x Fipt  
 150 psi Maximum Internal Pressure Rating @ 73°  
 F (23°C)

Dimensions Also Applicable to  
 8171E-XXXX & 8171V-XXXX

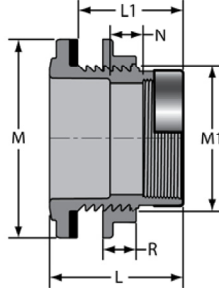


Part Number	Size	L	L1	M	M1	N	R	Min Hole Size	Approx. Wt. (Lbs.)
8171-002C	1/4	2- 1/2	1-13/16	1- 1/2	1- 1/16	1- 1/4	1/2	1-1/16	.12
8171-003C	3/8	2- 1/2	1-13/16	1- 5/8	1- 3/16	1- 3/16	1/2	1-3/16	.12
8171-005C	1/2	2-15/16	2- 3/16	2- 1/16	1-15/32	1- 1/4	5/8	1-1/2	.23
8171-007C	3/4	2-15/16	2-15/32	2- 1/4	1- 5/8	1- 3/16	5/8	1-3/4	.26
8171-010C	1	3- 5/16	2-13/16	2- 5/8	1-31/32	1- 1/4	5/8	2	.39
8171-012C	1-1/4	3-13/32	2-27/32	3- 3/32	2- 5/16	1-17/32	5/8	2-3/8	.51
8171-015C	1-1/2	3- 5/8	2-13/16	3- 5/8	2-11/16	1- 1/4	5/8	2-3/4	.71
8171-020C	2	4- 1/8	3- 1/4	4- 7/8	3- 1/4	1- 5/8	3/4	3-3/8	1.34
8171-025C	2-1/2	4- 7/8	7/8	5- 1/4	3-13/16	1-13/16	1	3-7/8	2.39
8171-030C	3	5- 1/2	4- 1/2	6	4- 9/16	2- 3/16	1	4-5/8	2.75
8171-040C	4	5	4	7- 1/2	5- 1/2	1- 1/4	1- 1/4	5-1/2	3.35
8171-060C	6	4-31/32	4- 1/16	10- 1/16	7-11/16	1/16	1- 1/4	8	5.91



Schedule 80 CPVC Technical  
**Schedule 80 CPVC Tank Adapters**

**Tank Adapters, CPVC New Style Special Reinforced (SR) Threaded with Neoprene Gaskets**

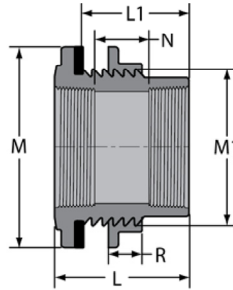


Socket x SR Fipt - Stainless Steel Collar  
 150 psi Maximum Internal Pressure Rating @ 73° F (23°C)

Dimensions Also Applicable to  
 8171E-XXXCSR & 8171V-XXXCSR

Part Number	Size	L	L1	M	M1	N	R	Min Hole Size	Approx. Wt. (Lbs.)
8171-002CSR	1/4	2- 1/2	1-13/16	1- 1/2	1- 1/16	1- 1/4	1/2	1-1/16	.12
8171-003CSR	3/8	2- 1/2	1-13/16	1- 5/8	1- 3/16	1- 3/16	1/2	1-3/16	.12
8171-005CSR	1/2	2-15/16	2- 1/4	2- 1/16	1-15/32	1- 9/32	5/8	1-1/2	.24
8171-007CSR	3/4	2-15/16	2- 3/16	2- 1/4	1- 5/8	1- 1/4	5/8	1-3/4	.27
8171-010CSR	1	3- 5/16	2-13/16	2- 5/8	1-31/32	1- 1/4	5/8	2	.40
8171-012CSR	1-1/4	3-13/32	2- 5/8	3- 3/32	2- 5/16	1-17/32	5/8	2-3/8	.53
8171-015CSR	1-1/2	3- 5/8	2-13/16	3- 5/8	2-11/16	1- 1/4	5/8	2-3/4	.74
8171-020CSR	2	4- 1/8	3- 1/4	4- 7/8	3- 1/4	1- 5/8	3/4	3-3/8	1.36
8171-025CSR	2-1/2	4- 7/8	3- 7/8	5- 1/4	3-13/16	1-11/16	1	3-7/8	2.45
8171-030CSR	3	5- 1/2	4- 1/2	6	4- 9/16	2- 3/16	1	4-5/8	2.82
8171-040CSR	4	5	4	7- 1/2	5- 1/2	1- 1/4	1- 1/4	5-1/2	3.47
8171-060CSR	6	4-31/32	4- 1/16	10- 1/16	7-11/16	1/16	1- 1/4	8	9.16

**Tank Adapters, CPVC New Style Standard with Neoprene Gaskets**



Fipt x Fipt  
 150 psi Maximum Internal Pressure Rating @ 73° F (23°C)

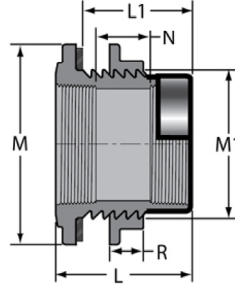
Dimensions Also Applicable to  
 8172E-XXXC & 8172V-XXXC

Part Number	Size	L	L1	M	M1	N	R	Min Hole Size	Approx. Wt. (Lbs.)
8172-002C	1/4	2- 1/2	1-13/16	1- 1/2	1- 1/16	1- 5/16	1/2	1-1/16	.12
8172-003C	3/8	2- 1/2	1-13/16	1- 5/8	1- 3/16	1- 3/8	1/2	1-3/16	.12
8172-005C	1/2	2-15/16	2- 3/16	2- 1/16	1-15/32	1-13/32	5/8	1-1/2	.24
8172-007C	3/4	2-15/16	2-15/32	2- 1/4	1- 5/8	1- 1/2	5/8	1-3/4	.27
8172-010C	1	3- 5/16	2-13/16	2- 5/8	1-31/32	1- 1/4	5/8	2	.40
8172-012C	1-1/4	3-13/32	2-27/32	3- 3/32	2- 5/16	1-17/32	5/8	2-3/8	.53
8172-015C	1-1/2	3-19/32	3- 1/16	3-19/32	2-21/32	1-11/16	5/8	2-3/4	.74
8172-020C	2	4- 1/8	3- 1/4	4- 7/8	3- 1/4	2- 3/16	3/4	3-3/8	1.35
8172-025C	2-1/2	4- 7/8	3- 7/8	5- 1/4	3-13/16	2- 1/4	1	3-7/8	2.52
8172-030C	3	5- 1/2	4- 1/2	6	4- 9/16	2-11/16	1	4-5/8	2.95
8172-040C	4	5	4	7- 1/2	5- 1/2	2	1- 1/4	5-1/2	3.69
8172-060C	6	5	4- 3/16	9- 7/8	7-31/32	1- 5/32	1- 1/4	8	6.21

Schedule 80 CPVC Technical  
**Schedule 80 CPVC Tank Adapters**



**Tank Adapters, CPVC New Style Special Reinforced (SR) Threaded with Neoprene Gaskets**

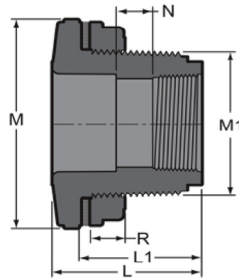


Fipt x SR Fipt - Stainless Steel Collar  
 150 psi Maximum Internal Pressure Rating @ 73° F (23°C)

Dimensions Also Applicable to  
 8172E-XXXCSR & 8172V-XXXCSR

Part Number	Size	L	L1	M	M1	N	R	Min Hole Size	Approx. Wt. (Lbs.)
8172-002CSR	1/4	2- 1/2	1- 7/8	1- 9/16	1- 1/16	1- 5/16	1/2	1-1/16	.12
8172-003CSR	3/8	2- 1/2	1-13/16	1- 5/8	1- 3/16	1- 3/8	1/2	1-3/16	.12
8172-005CSR	1/2	2-15/16	2- 3/16	2- 1/16	1-15/32	1-13/32	5/8	1-1/2	.25
8172-007CSR	3/4	2-15/16	2-15/32	2- 1/4	1- 5/8	1- 3/16	5/8	1-3/4	.28
8172-010CSR	1	3-15/16	2-19/32	2- 5/8	1-31/32	1- 1/4	5/8	2	.42
8172-012CSR	1-1/4	3-13/32	2-27/32	3- 3/32	2- 5/16	1-17/32	5/8	2-3/8	.54
8172-015CSR	1-1/2	3- 5/8	2-13/16	3- 5/8	2-11/16	1- 3/4	5/8	2-3/4	.77
8172-020CSR	2	4- 1/8	3- 1/4	4-27/32	3- 1/32	2- 1/8	3/4	3-3/8	1.41
8172-025CSR	2-1/2	4- 7/8	3- 7/8	5- 1/4	3-13/16	2- 1/4	1	3-7/8	2.58
8172-030CSR	3	5-15/32	4-17/32	5-31/32	4-17/32	2-21/32	1	4-5/8	2.96
8172-040CSR	4	5	4	7- 1/2	5- 1/2	2	1- 1/4	5-1/2	3.79
8172-060CSR	6	5	4-3/16	9-7/8	7-31/32	1-5/32	1-1/4	8	9.40

**Tank Adapter, CPVC Old Style with Neoprene Gasket**



Socket x Fipt  
 150 psi Maximum Internal Pressure Rating @ 73° F (23°C)

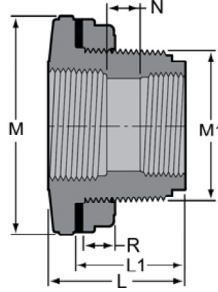
Part Number	Size	L	L1	M	M1	N	R	Approx. Wt. (Lbs.)
871-005C	1/2	2-27/32	2-11/32	2- 9/32	1- 9/32	1- 3/8	5/8	.25
871-007C	3/4	2-23/32	2- 7/32	2- 1/2	1- 5/8	29/32	5/8	.31
871-010C	1	2-25/32	2- 1/8	2-13/16	1- 7/8	25/32	21/32	.34
871-012C	1-1/4	3- 1/8	2- 7/16	3-29/32	2-11/32	27/32	5/8	.62
871-015C	1-1/2	3- 5/32	2-21/32	3-29/32	2-11/32	3/4	5/8	.57
871-020C	2	3- 3/16	2-17/32	4-31/32	3-15/32	13/16	3/4	1.42
871-030C	3	4-19/32	3-13/16	6- 7/16	4-15/32	31/32	1- 3/16	2.62
871-040C	4	4- 7/16	3-23/32	7- 7/16	5- 1/2	1/2	1- 1/4	3.37



Schedule 80 CPVC Technical  
**Schedule 80 CPVC Tank Adapters**

**Tank Adapter, CPVC Old Style with Neoprene Gasket**

Fipt x Fipt  
150 psi Maximum Internal Pressure Rating @ 73°F (23°C)



Part Number	Size	L	L1	M	M1	N	R	Approx. Wt. (Lbs.)
872-005C	1/2	2-27/32	2-11/32	2- 9/32	1- 9/32	1-13/32	5/8	.25
872-007C	3/4	2-23/32	2- 1/4	2- 1/2	1- 5/8	1- 5/32	5/8	.32
872-010C	1	2-25/32	2- 5/16	2-13/16	1- 7/8	25/32	5/8	.36
872-012C	1-1/4	3- 1/8	2- 5/8	3-27/32	2-11/32	1- 1/8	5/8	.64
872-015C	1-1/2	3- 1/8	2- 5/8	3-29/32	2-11/32	1- 1/16	5/8	.60
872-020C	2	3- 5/32	2- 3/8	5- 1/16	3- 7/16	1- 5/32	3/4	1.44
872-030C	3	4-19/32	3-13/16	6- 7/16	4-15/32	1-11/32	1- 3/16	2.61
872-040C	4	4- 7/16	3- 1/2	7- 1/2	5- 1/2	15/16	1- 1/4	3.46

TANK ADAPTER GASKET SECTION	SIZE	O.D.*	I.D.*	T
	1/2	2.25	1.33	3/16
	3/4	2.49	1.69	3/16
	1	2.79	1.94	3/16
	1-1/4	3.81	2.39	3/16
	1-1/2	3.81	2.39	3/16
	2	4.89	3.51	3/16
	3	6.30	4.49	3/16
	4	7.33	5.50	3/16

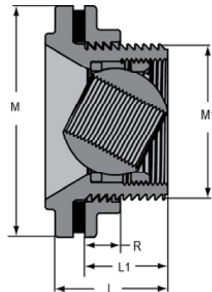
Old Style Tank Adapter Gasket & Hole Size Requirements			
Tank Adapter Size	Recommended Minimum Hole Size	Minimum Inside Curvature Radius (inches)	Maximum Tank Wall Thickness (inches)
1/2	1-3/8	3.88	1.06
3/4	1-3/4	5.00	1.06
1	2	6.12	1.06
1-1/4	2-7/16	10.75	1.34
1-1/2	2-7/16	10.75	1.34
2	3-9/16	18.50	1.16
3	4-9/16	31.00	1.75
4	5-9/16	42.75	1.81

\* Both outside and inside dimensions are +/- .03 shore hardness 65-70

**Tank Adapter, CPVC Self Aligning with Neoprene Gasket**

Fipt  
75 psi Maximum Internal Pressure Rating @ 73°F (23°C)

Dimensions Also Applicable to  
8172ESA-XXXX & 8172VSA-XXXX



Part Number	Size	L	L1	M	M1	R	Approx. Wt. (Lbs.)
8172SA-010C	1	2- 9/16	1- 3/4	4- 7/8	3- 1/4	3/4	2.66
8172SA-020C	2	2-11/16	1- 3/4	6	4- 9/16	1	9.03
8172SA-030C	3	3- 1/4	2- 1/4	7- 1/2	5- 1/2	1- 1/4	3.14