



# Glue-On Saddles & Clamp-On Saddles

## Glue-On Saddles

| Part Number                          | Size  | Std Pk | Mstr Ctn | Prod Code | MSRP    |
|--------------------------------------|-------|--------|----------|-----------|---------|
| <b>Stub Saddle (continued)</b>       |       |        |          |           |         |
| <b>IPS O.D. x Socket Schedule 80</b> |       |        |          |           |         |
| 3965-762C                            | 16X12 | 1      | 0        | 099       | 1359.81 |
| 3965-764C                            | 16X14 | 1      | 0        | 099       | 1848.09 |
| 3965-781C                            | 18X2  | 1      | 2        | 099       | 327.07  |
| 3965-783C                            | 18X3  | 1      | 0        | 099       | 363.78  |
| 3965-784C                            | 18X4  | 1      | 2        | 099       | 537.47  |
| 3965-786C                            | 18X6  | 1      | 2        | 099       | 729.36  |
| 3965-788C                            | 18X8  | 1      | 0        | 099       | 803.33  |
| 3965-790C                            | 18X10 | 1      | 0        | 099       | 1169.63 |
| 3965-792C                            | 18X12 | 1      | 0        | 099       | 2278.55 |
| 3965-794C                            | 18X14 | 1      | 0        | 099       | 2925.84 |
| 3965-796C                            | 18X16 | 1      | 0        | 099       | 3748.16 |
| 3965-811C                            | 20X2  | 1      | 0        | 099       | 342.89  |
| 3965-813C                            | 20X3  | 1      | 2        | 099       | 388.43  |
| 3965-814C                            | 20X4  | 1      | 0        | 099       | 587.72  |
| 3965-816C                            | 20X6  | 1      | 0        | 099       | 780.52  |
| 3965-818C                            | 20X8  | 1      | 0        | 099       | 969.99  |
| 3965-820C                            | 20X10 | 1      | 0        | 099       | 1327.37 |
| 3965-822C                            | 20X12 | 1      | 0        | 099       | 2440.75 |
| 3965-824C                            | 20X14 | 1      | 0        | 099       | 3165.65 |
| 3965-826C                            | 20X16 | 1      | 0        | 099       | 4008.43 |
| 3965-828C                            | 20X18 | 1      | 0        | 099       | 4886.80 |
| 3965-901C                            | 24X2  | 1      | 5        | 099       | 377.96  |
| 3965-903C                            | 24X3  | 1      | 2        | 099       | 633.29  |
| 3965-904C                            | 24X4  | 1      | 5        | 099       | 741.93  |
| 3965-906C                            | 24X6  | 1      | 3        | 099       | 1047.07 |
| 3965-908C                            | 24X8  | 1      | 0        | 099       | 1226.54 |
| 3965-910C                            | 24X10 | 1      | 0        | 099       | 1537.14 |
| 3965-912C                            | 24X12 | 1      | 0        | 099       | 2635.79 |
| 3965-914C                            | 24X14 | 1      | 0        | 099       | 3332.12 |
| 3965-916C                            | 24X16 | 1      | 0        | 099       | 4087.16 |
| 3965-918C                            | 24X18 | 1      | 0        | 099       | 4984.07 |
| 3965-920C                            | 24X20 | 1      | 0        | 099       | 6425.03 |

## Clamp-On Saddles

### Clamp-On Saddle x Socket Single Outlet, CPVC Gray

with FKM O-ring Seal & Zinc-Plated Hardware



2"- 4" 235, 6" 200, 8"-12" 150 psi @ 73°F (23°C)

|                        |             |       |   |    |     |       |
|------------------------|-------------|-------|---|----|-----|-------|
| 866V-247C              | 2X1/2       | 3/4   | 1 | 10 | 096 | 66.12 |
| 866V-248C              | 2X3/4       | 7/8   | 1 | 10 | 096 | 66.12 |
| 866V-249C              | 2X1         | 1-1/8 | 1 | 10 | 096 | 66.12 |
| 866V-250C              | 2X1-1/4     | 1-1/2 | 1 | 10 | 096 | 66.12 |
| 866V-251C              | 2X1-1/2     | 1-1/2 | 1 | 10 | 096 | 66.12 |
| 866V-291C              | 2-1/2X1-1/2 | 1-3/4 | 1 | 10 | 096 | 91.88 |
| 866V-333C <sup>1</sup> | 3X1/2       | 7/8   | 1 | 10 | 096 | 91.88 |
| 866V-334C              | 3X3/4       | 7/8   | 1 | 10 | 096 | 91.88 |
| 866V-335C              | 3X1         | 1-1/8 | 1 | 10 | 096 | 91.88 |

| Part Number | Size | Hole Saw Dia | Std Pk | Mstr Ctn | Prod Code | MSRP |
|-------------|------|--------------|--------|----------|-----------|------|
|-------------|------|--------------|--------|----------|-----------|------|

### Clamp-On Saddle x Socket Single Outlet, CPVC Gray (continued) with FKM O-ring Seal & Zinc-Plated Hardware

|                        |         |       |   |    |     |        |
|------------------------|---------|-------|---|----|-----|--------|
| 866V-336C <sup>1</sup> | 3X1-1/4 | 2-1/4 | 1 | 10 | 096 | 91.88  |
| 866V-337C <sup>1</sup> | 3X1-1/2 | 2-1/4 | 1 | 10 | 096 | 91.88  |
| 866V-338C              | 3X2     | 2-1/4 | 1 | 10 | 096 | 91.88  |
| 866V-415C <sup>1</sup> | 4X1/2   | 1-1/8 | 1 | 10 | 096 | 110.43 |
| 866V-416C <sup>1</sup> | 4X3/4   | 1-1/8 | 1 | 10 | 096 | 110.43 |
| 866V-417C              | 4X1     | 1-1/8 | 1 | 8  | 096 | 110.43 |
| 866V-418C <sup>1</sup> | 4X1-1/4 | 1-3/4 | 1 | 8  | 096 | 110.43 |
| 866V-419C              | 4X1-1/2 | 1-3/4 | 1 | 8  | 096 | 110.43 |
| 866V-420C              | 4X2     | 2-1/4 | 1 | 8  | 096 | 110.43 |
| 866V-421C <sup>1</sup> | 4X2-1/2 | 3     | 1 | 4  | 096 | 118.56 |
| 866V-422C              | 4X3     | 3     | 1 | 4  | 096 | 129.26 |
| 866V-523C <sup>1</sup> | 6X1/2   | 1-1/8 | 1 | 4  | 096 | 184.08 |
| 866V-524C <sup>1</sup> | 6X3/4   | 1-1/8 | 1 | 4  | 096 | 184.08 |
| 866V-525C              | 6X1     | 1-1/8 | 1 | 4  | 096 | 184.08 |
| 866V-526C <sup>1</sup> | 6X1-1/4 | 2-1/4 | 1 | 4  | 096 | 184.08 |
| 866V-527C <sup>1</sup> | 6X1-1/2 | 2-1/4 | 1 | 4  | 096 | 184.08 |
| 866V-528C              | 6X2     | 2-1/4 | 1 | 4  | 096 | 184.08 |
| 866V-529C <sup>1</sup> | 6X2-1/2 | 3     | 1 | 4  | 096 | 199.22 |
| 866V-530C              | 6X3     | 3     | 1 | 4  | 096 | 212.07 |
| 866V-532C              | 6X4     | 4     | 1 | 4  | 096 | 225.97 |
| 866V-573C <sup>1</sup> | 8X1/2   | 4     | 1 | 0  | 096 | 392.63 |
| 866V-574C <sup>1</sup> | 8X3/4   | 4     | 1 | 0  | 096 | 392.63 |
| 866V-575C <sup>1</sup> | 8X1     | 4     | 1 | 0  | 096 | 392.63 |
| 866V-576C <sup>1</sup> | 8X1-1/4 | 4     | 1 | 0  | 096 | 392.63 |
| 866V-577C <sup>1</sup> | 8X1-1/2 | 4     | 1 | 0  | 096 | 392.63 |
| 866V-578C              | 8X2     | 4     | 1 | 0  | 096 | 392.63 |
| 866V-579C <sup>1</sup> | 8X2-1/2 | 4     | 1 | 0  | 096 | 431.96 |
| 866V-580C <sup>1</sup> | 8X3     | 4     | 1 | 0  | 096 | 453.23 |
| 866V-582C              | 8X4     | 4     | 1 | 0  | 096 | 493.55 |
| 866V-585C              | 8X6     | 6     | 1 | 0  | 096 | 678.58 |
| 866V-624C              | 10X4    | 4     | 1 | 0  | 096 | 634.80 |
| 866V-626C              | 10X6    | 6     | 1 | 0  | 096 | 729.89 |
| 866V-664C              | 12X4    | 4     | 1 | 0  | 096 | 795.72 |
| 866V-666C              | 12X6    | 6     | 1 | 0  | 096 | 843.44 |

<sup>1</sup> Outlet-sized with Bushing

### Clamp-On Saddle x Socket Single Outlet, CPVC Gray

with FKM O-ring Seal & SS Hardware



2"- 4" 235, 6" 200, 8"-12" 150 psi @ 73°F (23°C)

|                         |             |       |   |    |     |        |
|-------------------------|-------------|-------|---|----|-----|--------|
| 866SV-247C              | 2X1/2       | 3/4   | 1 | 10 | 096 | 100.92 |
| 866SV-248C              | 2X3/4       | 7/8   | 1 | 10 | 096 | 100.92 |
| 866SV-249C              | 2X1         | 1-1/8 | 1 | 10 | 096 | 100.92 |
| 866SV-250C              | 2X1-1/4     | 1-1/2 | 1 | 10 | 096 | 100.92 |
| 866SV-251C              | 2X1-1/2     | 1-1/2 | 1 | 10 | 096 | 100.92 |
| 866SV-291C              | 2-1/2X1-1/2 | 1-3/4 | 1 | 10 | 096 | 135.19 |
| 866SV-333C <sup>1</sup> | 3X1/2       | 7/8   | 1 | 10 | 096 | 135.19 |
| 866SV-334C              | 3X3/4       | 7/8   | 1 | 10 | 096 | 135.19 |
| 866SV-335C              | 3X1         | 1-1/8 | 1 | 10 | 096 | 135.19 |
| 866SV-336C <sup>1</sup> | 3X1-1/4     | 2-1/4 | 1 | 10 | 096 | 135.19 |
| 866SV-337C <sup>1</sup> | 3X1-1/2     | 2-1/4 | 1 | 10 | 096 | 135.19 |

Schedule 80 CPVC Product  
**Clamp-On Saddles**



**Clamp-On Saddles**

| Part Number   | Size    | Hole Saw Dia | Std Pk | Mstr Ctn | Prod Code | MSRP    |
|---|---------|--------------|--------|----------|-----------|---------|
| <b>Clamp-On Saddle x Socket Single Outlet, CPVC Gray (continued) with FKM O-ring Seal &amp; SS Hardware</b> |         |              |        |          |           |         |
| 866SV-338C  | 3X2     | 2-1/4        | 1      | 10       | 096       | 135.19  |
| 866SV-415C <sup>1</sup>   | 4X1/2   | 1-1/8        | 1      | 10       | 096       | 174.62  |
| 866SV-416C <sup>1</sup>   | 4X3/4   | 1-1/8        | 1      | 10       | 096       | 174.62  |
| 866SV-417C  | 4X1     | 1-1/8        | 1      | 8        | 096       | 174.62  |
| 866SV-418C <sup>1</sup>   | 4X1-1/4 | 1-3/4        | 1      | 8        | 096       | 174.62  |
| 866SV-419C  | 4X1-1/2 | 1-3/4        | 1      | 8        | 096       | 174.62  |
| 866SV-420C  | 4X2     | 2-1/4        | 1      | 8        | 096       | 174.62  |
| 866SV-421C <sup>1</sup>   | 4X2-1/2 | 3            | 1      | 4        | 096       | 184.82  |
| 866SV-422C  | 4X3     | 3            | 1      | 4        | 096       | 194.23  |
| 866SV-523C <sup>1</sup>   | 6X1/2   | 1-1/8        | 1      | 4        | 096       | 278.04  |
| 866SV-524C <sup>1</sup>   | 6X3/4   | 1-1/8        | 1      | 4        | 096       | 278.04  |
| 866SV-525C  | 6X1     | 1-1/8        | 1      | 4        | 096       | 278.04  |
| 866SV-526C <sup>1</sup>   | 6X1-1/4 | 2-1/4        | 1      | 4        | 096       | 278.04  |
| 866SV-527C <sup>1</sup>   | 6X1-1/2 | 2-1/4        | 1      | 4        | 096       | 278.04  |
| 866SV-528C  | 6X2     | 2-1/4        | 1      | 4        | 096       | 278.04  |
| 866SV-529C <sup>1</sup>   | 6X2-1/2 | 3            | 1      | 4        | 096       | 289.06  |
| 866SV-530C  | 6X3     | 3            | 1      | 4        | 096       | 299.11  |
| 866SV-532C  | 6X4     | 4            | 1      | 4        | 096       | 317.92  |
| 866SV-573C <sup>1</sup>   | 8X1/2   | 4            | 1      | 0        | 096       | 513.01  |
| 866SV-574C <sup>1</sup>   | 8X3/4   | 4            | 1      | 0        | 096       | 513.01  |
| 866SV-575C <sup>1</sup>   | 8 X 1   | 4            | 1      | 0        | 096       | 513.01  |
| 866SV-576C <sup>1</sup>   | 8X1-1/4 | 4            | 1      | 0        | 096       | 513.01  |
| 866SV-577C <sup>1</sup>   | 8X1-1/2 | 4            | 1      | 0        | 096       | 513.01  |
| 866SV-578C  | 8 X 2   | 4            | 1      | 0        | 096       | 513.01  |
| 866SV-579C <sup>1</sup>   | 8X2-1/2 | 4            | 1      | 0        | 096       | 543.00  |
| 866SV-580C <sup>1</sup>   | 8X3     | 4            | 1      | 0        | 096       | 592.65  |
| 866SV-582C  | 8X4     | 4            | 1      | 0        | 096       | 628.19  |
| 866SV-585C  | 8X6     | 6            | 1      | 0        | 096       | 697.20  |
| 866SV-624C  | 10X4    | 4            | 1      | 0        | 096       | 829.61  |
| 866SV-626C  | 10X6    | 6            | 1      | 0        | 096       | 954.18  |
| 866SV-664C  | 12X4    | 4            | 1      | 0        | 096       | 1039.87 |
| 866SV-666C  | 12X6    | 6            | 1      | 0        | 096       | 1206.39 |

<sup>1</sup> Outlet-sized with Bushing



**Clamp-On Saddle x Socket Single Outlet, CPVC Gray**  
**with EPDM O-ring Seal & Zinc-Plated Hardware**

2"- 4" 235, 6" 200, 8"-12" 150 psi @ 73°F (23°C)

|                       |             |       |   |    |     |       |
|-----------------------|-------------|-------|---|----|-----|-------|
| 866-247C              | 2X1/2       | 3/4   | 1 | 10 | 096 | 62.83 |
| 866-248C              | 2X3/4       | 7/8   | 1 | 10 | 096 | 62.83 |
| 866-249C              | 2X1         | 1-1/8 | 1 | 10 | 096 | 62.83 |
| 866-250C              | 2X1-1/4     | 1-1/2 | 1 | 10 | 096 | 62.83 |
| 866-251C              | 2X1-1/2     | 1-1/2 | 1 | 10 | 096 | 62.83 |
| 866-291C              | 2-1/2X1-1/2 | 1-3/4 | 1 | 10 | 096 | 84.18 |
| 866-333C <sup>1</sup> | 3X1/2       | 7/8   | 1 | 10 | 096 | 84.18 |
| 866-334C              | 3X3/4       | 7/8   | 1 | 10 | 096 | 84.18 |
| 866-335C              | 3X1         | 1-1/8 | 1 | 10 | 096 | 84.18 |
| 866-336C <sup>1</sup> | 3X1-1/4     | 2-1/4 | 1 | 10 | 096 | 84.18 |

Made in the U.S.A.

| Part Number | Size | Hole Saw Dia | Std Pk | Mstr Ctn | Prod Code | MSRP |
|-------------|------|--------------|--------|----------|-----------|------|
|-------------|------|--------------|--------|----------|-----------|------|

**Clamp-On Saddle x Socket Single Outlet, CPVC Gray (continued) with EPDM O-ring Seal & Zinc-Plated Hardware**

|                       |         |       |   |    |     |        |
|-----------------------|---------|-------|---|----|-----|--------|
| 866-337C <sup>1</sup> | 3X1-1/2 | 2-1/4 | 1 | 10 | 096 | 84.18  |
| 866-338C              | 3X2     | 2-1/4 | 1 | 10 | 096 | 84.18  |
| 866-415C <sup>1</sup> | 4X1/2   | 1-1/8 | 1 | 10 | 096 | 102.35 |
| 866-416C <sup>1</sup> | 4X3/4   | 1-1/8 | 1 | 10 | 096 | 102.35 |
| 866-417C              | 4X1     | 1-1/8 | 1 | 8  | 096 | 102.35 |
| 866-418C <sup>1</sup> | 4X1-1/4 | 1-3/4 | 1 | 8  | 096 | 102.35 |
| 866-419C              | 4X1-1/2 | 1-3/4 | 1 | 8  | 096 | 102.35 |
| 866-420C              | 4X2     | 2-1/4 | 1 | 8  | 096 | 102.35 |
| 866-421C <sup>1</sup> | 4X2-1/2 | 3     | 1 | 4  | 096 | 112.41 |
| 866-422C              | 4X3     | 3     | 1 | 4  | 096 | 125.29 |
| 866-523C <sup>1</sup> | 6X1/2   | 1-1/8 | 1 | 4  | 096 | 170.80 |
| 866-524C <sup>1</sup> | 6X3/4   | 1-1/8 | 1 | 4  | 096 | 170.80 |
| 866-525C              | 6X1     | 1-1/8 | 1 | 4  | 096 | 170.80 |
| 866-526C <sup>1</sup> | 6X1-1/4 | 2-1/4 | 1 | 4  | 096 | 170.80 |
| 866-527C <sup>1</sup> | 6X1-1/2 | 2-1/4 | 1 | 4  | 096 | 170.80 |
| 866-528C              | 6X2     | 2-1/4 | 1 | 4  | 096 | 170.80 |
| 866-529C <sup>1</sup> | 6X2-1/2 | 3     | 1 | 4  | 096 | 185.67 |
| 866-530C              | 6X3     | 3     | 1 | 4  | 096 | 199.17 |
| 866-532C              | 6X4     | 4     | 1 | 4  | 096 | 212.84 |
| 866-573C <sup>1</sup> | 8X1/2   | 4     | 1 | 0  | 096 | 375.58 |
| 866-574C <sup>1</sup> | 8X3/4   | 4     | 1 | 0  | 096 | 375.58 |
| 866-575C <sup>1</sup> | 8X1     | 4     | 1 | 0  | 096 | 375.58 |
| 866-576C <sup>1</sup> | 8X1-1/4 | 4     | 1 | 0  | 096 | 375.58 |
| 866-577C <sup>1</sup> | 8X1-1/2 | 4     | 1 | 0  | 096 | 375.58 |
| 866-578C              | 8X2     | 4     | 1 | 0  | 096 | 375.58 |
| 866-579C <sup>1</sup> | 8X2-1/2 | 4     | 1 | 0  | 096 | 413.11 |
| 866-580C <sup>1</sup> | 8X3     | 4     | 1 | 0  | 096 | 433.87 |
| 866-582C              | 8X4     | 4     | 1 | 0  | 096 | 459.85 |
| 866-585C              | 8X6     | 6     | 1 | 0  | 096 | 510.40 |
| 866-621C <sup>1</sup> | 10X2    | 4     | 1 | 0  | 096 | 607.31 |
| 866-624C              | 10X4    | 4     | 1 | 0  | 096 | 607.31 |
| 866-626C              | 10X6    | 4     | 1 | 0  | 096 | 698.49 |
| 866-664C              | 12X4    | 4     | 1 | 0  | 096 | 761.41 |
| 866-666C              | 12X6    | 6     | 1 | 0  | 096 | 883.17 |

<sup>1</sup> Outlet-sized with Bushing



**Clamp-On Saddle x Socket Single Outlet, CPVC Gray**  
**with EPDM O-ring Seal & SS Hardware**

2"- 4" 235, 6" 200, 8"-12" 150 psi @ 73°F (23°C)

|                        |             |       |   |    |     |        |
|------------------------|-------------|-------|---|----|-----|--------|
| 866S-247C              | 2X1/2       | 3/4   | 1 | 10 | 096 | 97.82  |
| 866S-248C              | 2X3/4       | 7/8   | 1 | 10 | 096 | 97.82  |
| 866S-249C              | 2X1         | 1-1/8 | 1 | 10 | 096 | 97.82  |
| 866S-250C              | 2X1-1/4     | 1-1/2 | 1 | 10 | 096 | 97.82  |
| 866S-251C              | 2X1-1/2     | 1-1/2 | 1 | 10 | 096 | 97.82  |
| 866S-291C              | 2-1/2X1-1/2 | 1-3/4 | 1 | 10 | 096 | 130.40 |
| 866S-333C <sup>1</sup> | 3X1/2       | 7/8   | 1 | 10 | 096 | 130.40 |
| 866S-334C              | 3X3/4       | 7/8   | 1 | 10 | 096 | 130.40 |
| 866S-335C              | 3X1         | 1-1/8 | 1 | 10 | 096 | 130.40 |
| 866S-336C <sup>1</sup> | 3X1-1/4     | 2-1/4 | 1 | 10 | 096 | 130.40 |
| 866S-337C <sup>1</sup> | 3X1-1/2     | 2-1/4 | 1 | 10 | 096 | 130.40 |



# Clamp-On Saddles

## Clamp-On Saddles

| Part Number | Size | Hole Saw Dia | Std Pk | Mstr Ctn | Prod Code | MSRP |
|-------------|------|--------------|--------|----------|-----------|------|
|-------------|------|--------------|--------|----------|-----------|------|

### Clamp-On Saddle x Socket Single Outlet, CPVC Gray (continued) with EPDM O-ring Seal & SS Hardware

|                        |         |       |   |    |     |         |
|------------------------|---------|-------|---|----|-----|---------|
| 866S-338C              | 3X2     | 2-1/4 | 1 | 10 | 096 | 130.40  |
| 866S-415C <sup>1</sup> | 4X1/2   | 1-1/8 | 1 | 10 | 096 | 166.83  |
| 866S-416C <sup>1</sup> | 4X3/4   | 1-1/8 | 1 | 10 | 096 | 166.83  |
| 866S-417C              | 4X1     | 1-1/8 | 1 | 8  | 096 | 166.83  |
| 866S-418C <sup>1</sup> | 4X1-1/4 | 1-3/4 | 1 | 8  | 096 | 166.83  |
| 866S-419C              | 4X1-1/2 | 1-3/4 | 1 | 8  | 096 | 166.83  |
| 866S-420C              | 4X2     | 2-1/4 | 1 | 8  | 096 | 166.83  |
| 866S-421C <sup>1</sup> | 4X2-1/2 | 3     | 1 | 4  | 096 | 173.87  |
| 866S-422C              | 4X3     | 3     | 1 | 4  | 096 | 182.80  |
| 866S-523C <sup>1</sup> | 6X1/2   | 1-1/8 | 1 | 4  | 096 | 262.89  |
| 866S-524C <sup>1</sup> | 6X3/4   | 1-1/8 | 1 | 4  | 096 | 262.89  |
| 866S-525C              | 6X1     | 1-1/8 | 1 | 4  | 096 | 262.89  |
| 866S-526C <sup>1</sup> | 6X1-1/4 | 2-1/4 | 1 | 4  | 096 | 262.89  |
| 866S-527C <sup>1</sup> | 6X1-1/2 | 2-1/4 | 1 | 4  | 096 | 262.89  |
| 866S-528C              | 6X2     | 2-1/4 | 1 | 4  | 096 | 262.89  |
| 866S-529C <sup>1</sup> | 6X2-1/2 | 3     | 1 | 4  | 096 | 278.27  |
| 866S-530C              | 6X3     | 3     | 1 | 4  | 096 | 295.15  |
| 866S-532C              | 6X4     | 4     | 1 | 4  | 096 | 308.76  |
| 866S-573C <sup>1</sup> | 8X1/2   | 4     | 1 | 0  | 096 | 493.74  |
| 866S-574C <sup>1</sup> | 8X3/4   | 4     | 1 | 0  | 096 | 493.74  |
| 866S-575C <sup>1</sup> | 8X1     | 4     | 1 | 0  | 096 | 493.74  |
| 866S-576C <sup>1</sup> | 8X1-1/4 | 4     | 1 | 0  | 096 | 493.74  |
| 866S-577C <sup>1</sup> | 8X1-1/2 | 4     | 1 | 0  | 096 | 493.74  |
| 866S-578C              | 8 X 2   | 4     | 1 | 0  | 096 | 493.74  |
| 866S-579C <sup>1</sup> | 8X2-1/2 | 4     | 1 | 0  | 096 | 543.00  |
| 866S-580C <sup>1</sup> | 8X3     | 4     | 1 | 0  | 096 | 570.19  |
| 866S-582C              | 8X4     | 4     | 1 | 0  | 096 | 604.41  |
| 866S-585C              | 8X6     | 6     | 1 | 0  | 096 | 670.71  |
| 866S-624C              | 10X4    | 4     | 1 | 0  | 096 | 798.09  |
| 866S-626C              | 10X6    | 6     | 1 | 0  | 096 | 917.88  |
| 866S-664C              | 12X4    | 4     | 1 | 0  | 096 | 1000.36 |
| 866S-666C              | 12X6    | 6     | 1 | 0  | 096 | 1160.46 |

<sup>1</sup> Outlet-sized with Bushing



### Clamp-On Saddle x SR Thread Single Outlet, CPVC Gray

with FKM O-ring Seal & Zinc-Plated Hardware

2"- 4" 235, 6" 200, 8"-12" 150 psi @ 73°F (23°C)

|                          |             |       |   |    |     |        |
|--------------------------|-------------|-------|---|----|-----|--------|
| 867V-247CSR              | 2X1/2       | 3/4   | 1 | 10 | 096 | 75.72  |
| 867V-248CSR              | 2X3/4       | 7/8   | 1 | 10 | 096 | 75.72  |
| 867V-249CSR              | 2X1         | 1-1/8 | 1 | 10 | 096 | 75.72  |
| 867V-250CSR              | 2X1-1/4     | 1-1/2 | 1 | 10 | 096 | 75.72  |
| 867V-251CSR              | 2X1-1/2     | 1-1/2 | 1 | 10 | 096 | 75.72  |
| 867V-291CSR              | 2-1/2X1-1/2 | 1-3/4 | 1 | 10 | 096 | 105.64 |
| 867V-333CSR <sup>1</sup> | 3X1/2       | 7/8   | 1 | 10 | 096 | 105.64 |
| 867V-334CSR              | 3X3/4       | 7/8   | 1 | 10 | 096 | 105.64 |
| 867V-335CSR              | 3X1         | 1-1/8 | 1 | 10 | 096 | 105.64 |
| 867V-336CSR <sup>1</sup> | 3X1-1/4     | 2-1/4 | 1 | 10 | 096 | 105.64 |

| Part Number | Size | Hole Saw Dia | Std Pk | Mstr Ctn | Prod Code | MSRP |
|-------------|------|--------------|--------|----------|-----------|------|
|-------------|------|--------------|--------|----------|-----------|------|

### Clamp-On Saddle x SR Thread Single Outlet, CPVC Gray

(continued)

with FKM O-ring Seal & Zinc-Plated Hardware

|                          |         |       |   |    |     |        |
|--------------------------|---------|-------|---|----|-----|--------|
| 867V-337CSR <sup>1</sup> | 3X1-1/2 | 2-1/4 | 1 | 10 | 096 | 105.64 |
| 867V-338CSR              | 3X2     | 2-1/4 | 1 | 10 | 096 | 105.64 |
| 867V-415CSR <sup>1</sup> | 4X1/2   | 1-1/8 | 1 | 10 | 096 | 131.74 |
| 867V-416CSR <sup>1</sup> | 4X3/4   | 1-1/8 | 1 | 10 | 096 | 131.74 |
| 867V-417CSR              | 4X1     | 1-1/8 | 1 | 8  | 096 | 131.74 |
| 867V-418CSR <sup>1</sup> | 4X1-1/4 | 1-3/4 | 1 | 8  | 096 | 131.74 |
| 867V-419CSR              | 4X1-1/2 | 1-3/4 | 1 | 8  | 096 | 131.74 |
| 867V-420CSR              | 4X2     | 2-1/4 | 1 | 8  | 096 | 131.74 |
| 867V-421CSR <sup>1</sup> | 4X2-1/2 | 3     | 1 | 4  | 096 | 142.09 |
| 867V-422CSR              | 4X3     | 3     | 1 | 4  | 096 | 156.43 |
| 867V-523CSR <sup>1</sup> | 6X1/2   | 1-1/8 | 1 | 4  | 096 | 220.12 |
| 867V-524CSR <sup>1</sup> | 6X3/4   | 1-1/8 | 1 | 4  | 096 | 220.12 |
| 867V-525CSR              | 6X1     | 1-1/8 | 1 | 4  | 096 | 220.12 |
| 867V-526CSR <sup>1</sup> | 6X1-1/4 | 2-1/4 | 1 | 4  | 096 | 220.12 |
| 867V-527CSR <sup>1</sup> | 6X1-1/2 | 2-1/4 | 1 | 4  | 096 | 220.12 |
| 867V-528CSR              | 6X2     | 2-1/4 | 1 | 4  | 096 | 220.12 |
| 867V-529CSR <sup>1</sup> | 6X2-1/2 | 3     | 1 | 4  | 096 | 235.71 |
| 867V-530CSR              | 6X3     | 3     | 1 | 4  | 096 | 244.19 |
| 867V-532CSR              | 6X4     | 4     | 1 | 4  | 096 | 261.55 |
| 867V-573CSR <sup>1</sup> | 8X1/2   | 4     | 1 | 0  | 096 | 438.78 |
| 867V-574CSR <sup>1</sup> | 8X3/4   | 4     | 1 | 0  | 096 | 438.78 |
| 867V-575CSR <sup>1</sup> | 8X1     | 4     | 1 | 0  | 096 | 438.78 |
| 867V-576CSR <sup>1</sup> | 8X1-1/4 | 4     | 1 | 0  | 096 | 438.78 |
| 867V-577CSR <sup>1</sup> | 8X1-1/2 | 4     | 1 | 0  | 096 | 438.78 |
| 867V-578CSR <sup>1</sup> | 8X2     | 4     | 1 | 0  | 096 | 438.78 |
| 867V-579CSR <sup>1</sup> | 8X2-1/2 | 4     | 1 | 0  | 096 | 482.62 |
| 867V-580CSR <sup>1</sup> | 8X3     | 4     | 1 | 0  | 096 | 506.80 |
| 867V-582CSR              | 8X4     | 4     | 1 | 0  | 096 | 539.21 |
| 867V-585CSR              | 8X6     | 6     | 1 | 0  | 096 | 555.98 |
| 867V-624CSR              | 10X4    | 4     | 1 | 0  | 096 | 641.52 |
| 867V-626CSR              | 10X6    | 6     | 1 | 0  | 096 | 737.71 |
| 867V-664CSR              | 12X4    | 4     | 1 | 0  | 096 | 802.52 |
| 867V-666CSR              | 12X6    | 6     | 1 | 0  | 096 | 932.93 |

<sup>1</sup> Outlet-sized with Bushing



### Clamp-On Saddle x SR Thread Single Outlet, CPVC Gray

with FKM O-ring Seal & SS Hardware

2"- 4" 235, 6" 200, 8"-12" 150 psi @ 73°F (23°C)

|                           |             |       |   |    |     |        |
|---------------------------|-------------|-------|---|----|-----|--------|
| 867SV-245CSR <sup>1</sup> | 2X1/4       | 1-1/8 | 1 | 10 | 096 | 131.65 |
| 867SV-247CSR              | 2X1/2       | 3/4   | 1 | 10 | 096 | 125.64 |
| 867SV-248CSR              | 2X3/4       | 7/8   | 1 | 10 | 096 | 125.64 |
| 867SV-249CSR              | 2X1         | 1-1/8 | 1 | 10 | 096 | 125.64 |
| 867SV-250CSR              | 2X1-1/4     | 1-1/2 | 1 | 10 | 096 | 125.64 |
| 867SV-251CSR              | 2X1-1/2     | 1-1/2 | 1 | 10 | 096 | 125.64 |
| 867SV-291CSR              | 2-1/2X1-1/2 | 1-3/4 | 1 | 10 | 096 | 168.79 |
| 867SV-331CSR <sup>1</sup> | 3X1/4       | 1-1/8 | 1 | 10 | 096 | 178.43 |
| 867SV-333CSR <sup>1</sup> | 3X1/2       | 7/8   | 1 | 10 | 096 | 168.79 |
| 867SV-334CSR              | 3X3/4       | 7/8   | 1 | 10 | 096 | 168.79 |
| 867SV-335CSR              | 3X1         | 1-1/8 | 1 | 10 | 096 | 168.79 |

Schedule 80 CPVC Product  
**Clamp-On Saddles**



**Clamp-On Saddles**

| Part Number | Size | Hole Saw Dia | Std Pk | Mstr Ctn | Prod Code | MSRP |
|-------------|------|--------------|--------|----------|-----------|------|
|-------------|------|--------------|--------|----------|-----------|------|

**Clamp-On Saddle x SR Thread Single Outlet, CPVC Gray**

(continued)  
**with FKM O-ring Seal & SS Hardware**

|                           |         |       |   |    |     |         |
|---------------------------|---------|-------|---|----|-----|---------|
| 867SV-336CSR <sup>1</sup> | 3X1-1/4 | 2-1/4 | 1 | 10 | 096 | 168.79  |
| 867SV-337CSR <sup>1</sup> | 3X1-1/2 | 2-1/4 | 1 | 10 | 096 | 168.79  |
| 867SV-338CSR              | 3X2     | 2-1/4 | 1 | 10 | 096 | 168.79  |
| 867SV-413CSR <sup>1</sup> | 4X1/4   | 1-1/8 | 1 | 8  | 096 | 213.24  |
| 867SV-415CSR <sup>1</sup> | 4X1/2   | 1-1/8 | 1 | 10 | 096 | 213.24  |
| 867SV-416CSR <sup>1</sup> | 4X3/4   | 1-1/8 | 1 | 10 | 096 | 213.24  |
| 867SV-417CSR              | 4X1     | 1-1/8 | 1 | 8  | 096 | 213.24  |
| 867SV-418CSR <sup>1</sup> | 4X1-1/4 | 1-3/4 | 1 | 8  | 096 | 213.24  |
| 867SV-419CSR              | 4X1-1/2 | 1-3/4 | 1 | 8  | 096 | 213.24  |
| 867SV-420CSR              | 4X2     | 2-1/4 | 1 | 8  | 096 | 213.24  |
| 867SV-421CSR <sup>1</sup> | 4X2-1/2 | 3     | 1 | 4  | 096 | 221.85  |
| 867SV-422CSR              | 4X3     | 3     | 1 | 4  | 096 | 233.87  |
| 867SV-521CSR <sup>1</sup> | 6X1/4   | 1-1/8 | 1 | 4  | 096 | 369.13  |
| 867SV-523CSR <sup>1</sup> | 6X1/2   | 1-1/8 | 1 | 4  | 096 | 355.41  |
| 867SV-524CSR <sup>1</sup> | 6X3/4   | 1-1/8 | 1 | 4  | 096 | 355.41  |
| 867SV-525CSR              | 6X1     | 1-1/8 | 1 | 4  | 096 | 355.41  |
| 867SV-526CSR <sup>1</sup> | 6X1-1/4 | 2-1/4 | 1 | 4  | 096 | 355.41  |
| 867SV-527CSR <sup>1</sup> | 6X1-1/2 | 2-1/4 | 1 | 4  | 096 | 355.41  |
| 867SV-528CSR              | 6X2     | 2-1/4 | 1 | 4  | 096 | 355.41  |
| 867SV-529CSR <sup>1</sup> | 6X2-1/2 | 3     | 1 | 4  | 096 | 372.34  |
| 867SV-530CSR              | 6X3     | 3     | 1 | 4  | 096 | 387.34  |
| 867SV-532CSR              | 6X4     | 4     | 1 | 4  | 096 | 414.62  |
| 867SV-571CSR <sup>1</sup> | 8X1/4   | 4     | 1 | 0  | 096 | 627.99  |
| 867SV-573CSR <sup>1</sup> | 8X1/2   | 4     | 1 | 0  | 096 | 612.25  |
| 867SV-574CSR <sup>1</sup> | 8X3/4   | 4     | 1 | 0  | 096 | 612.25  |
| 867SV-575CSR <sup>1</sup> | 8X1     | 4     | 1 | 0  | 096 | 612.25  |
| 867SV-576CSR <sup>1</sup> | 8X1-1/4 | 4     | 1 | 0  | 096 | 612.25  |
| 867SV-577CSR <sup>1</sup> | 8X1-1/2 | 4     | 1 | 0  | 096 | 612.25  |
| 867SV-578CSR <sup>1</sup> | 8X2     | 4     | 1 | 0  | 096 | 612.25  |
| 867SV-579CSR <sup>1</sup> | 8X2-1/2 | 4     | 1 | 0  | 096 | 673.52  |
| 867SV-580CSR <sup>1</sup> | 8X3     | 4     | 1 | 0  | 096 | 707.22  |
| 867SV-582CSR              | 8X4     | 4     | 1 | 0  | 096 | 749.74  |
| 867SV-585CSR              | 8X6     | 6     | 1 | 0  | 096 | 789.28  |
| 867SV-624CSR              | 10X4    | 4     | 1 | 0  | 096 | 892.21  |
| 867SV-626CSR              | 10X6    | 6     | 1 | 0  | 096 | 1026.02 |
| 867SV-664CSR              | 12X4    | 4     | 1 | 0  | 096 | 1118.32 |
| 867SV-666CSR              | 12X6    | 6     | 1 | 0  | 096 | 1297.26 |

<sup>1</sup> Outlet-sized with Bushing

**Clamp-On Saddle x SR Thread Single Outlet, CPVC Gray**

**with EPDM O-ring Seal & Zinc-Plated Hardware**



2"- 4" 235, 6" 200, 8"-12" 150 psi @ 73°F (23°C)

|            |         |       |   |    |     |       |
|------------|---------|-------|---|----|-----|-------|
| 867-247CSR | 2X1/2   | 3/4   | 1 | 10 | 096 | 65.73 |
| 867-248CSR | 2X3/4   | 7/8   | 1 | 10 | 096 | 65.73 |
| 867-249CSR | 2X1     | 1-1/8 | 1 | 10 | 096 | 65.73 |
| 867-250CSR | 2X1-1/4 | 1-1/2 | 1 | 10 | 096 | 65.73 |

Made in the U.S.A.

Suitable for Oil-Free air handling to 25 psi, not for distribution of compressed air or gas

Effective 10/01/2018 See MSRP-1 Sheet or Check Spears® On-line Catalog @ www.spearsmfg.com for Pricing

| Part Number | Size | Hole Saw Dia | Std Pk | Mstr Ctn | Prod Code | MSRP |
|-------------|------|--------------|--------|----------|-----------|------|
|-------------|------|--------------|--------|----------|-----------|------|

**Clamp-On Saddle x SR Thread Single Outlet, CPVC Gray**

(continued)  
**with EPDM O-ring Seal & Zinc-Plated Hardware**

|                         |             |       |   |    |     |        |
|-------------------------|-------------|-------|---|----|-----|--------|
| 867-251CSR              | 2X1-1/2     | 1-1/2 | 1 | 10 | 096 | 65.73  |
| 867-291CSR              | 2-1/2X1-1/2 | 1-3/4 | 1 | 10 | 096 | 89.82  |
| 867-333CSR <sup>1</sup> | 3X1/2       | 7/8   | 1 | 10 | 096 | 89.82  |
| 867-334CSR              | 3X3/4       | 7/8   | 1 | 10 | 096 | 89.82  |
| 867-335CSR              | 3X1         | 1-1/8 | 1 | 10 | 096 | 89.82  |
| 867-336CSR <sup>1</sup> | 3X1-1/4     | 2-1/4 | 1 | 10 | 096 | 89.82  |
| 867-337CSR <sup>1</sup> | 3X1-1/12    | 2-1/4 | 1 | 10 | 096 | 89.82  |
| 867-338CSR              | 3X2         | 2-1/4 | 1 | 10 | 096 | 89.82  |
| 867-415CSR <sup>1</sup> | 4X1/2       | 1-1/8 | 1 | 10 | 096 | 113.12 |
| 867-416CSR <sup>1</sup> | 4X3/4       | 1-1/8 | 1 | 10 | 096 | 113.12 |
| 867-417CSR              | 4X1         | 1-1/8 | 1 | 8  | 096 | 113.12 |
| 867-418CSR <sup>1</sup> | 4X1-1/4     | 1-3/4 | 1 | 8  | 096 | 113.12 |
| 867-419CSR              | 4X1-1/2     | 1-3/4 | 1 | 8  | 096 | 113.12 |
| 867-420CSR              | 4X2         | 2-1/4 | 1 | 8  | 096 | 113.12 |
| 867-421CSR <sup>1</sup> | 4X2-1/2     | 3     | 1 | 4  | 096 | 125.52 |
| 867-422CSR              | 4X3         | 3     | 1 | 4  | 096 | 135.48 |
| 867-523CSR <sup>1</sup> | 6X1/2       | 1-1/8 | 1 | 4  | 096 | 188.51 |
| 867-524CSR <sup>1</sup> | 6X3/4       | 1-1/8 | 1 | 4  | 096 | 188.51 |
| 867-525CSR              | 6X1         | 1-1/8 | 1 | 4  | 096 | 188.51 |
| 867-526CSR <sup>1</sup> | 6X1-1/4     | 2-1/4 | 1 | 4  | 096 | 188.51 |
| 867-527CSR <sup>1</sup> | 6X1-1/2     | 2-1/4 | 1 | 4  | 096 | 188.51 |
| 867-528CSR              | 6X2         | 2-1/4 | 1 | 4  | 096 | 188.51 |
| 867-529CSR <sup>1</sup> | 6X2-1/2     | 3     | 1 | 4  | 096 | 199.46 |
| 867-530CSR              | 6X3         | 3     | 1 | 4  | 096 | 210.93 |
| 867-532CSR              | 6X4         | 4     | 1 | 4  | 096 | 229.38 |
| 867-573CSR <sup>1</sup> | 8X1/2       | 4     | 1 | 0  | 096 | 398.36 |
| 867-574CSR              | 8X3/4       | 4     | 1 | 0  | 096 | 398.36 |
| 867-575CSR <sup>1</sup> | 8X1         | 4     | 1 | 0  | 096 | 398.36 |
| 867-576CSR <sup>1</sup> | 8X1-1/4     | 4     | 1 | 0  | 096 | 398.36 |
| 867-577CSR <sup>1</sup> | 8X1-1/2     | 4     | 1 | 0  | 096 | 398.36 |
| 867-578CSR <sup>1</sup> | 8X2         | 4     | 1 | 0  | 096 | 398.36 |
| 867-579CSR <sup>1</sup> | 8X2-1/2     | 4     | 1 | 0  | 096 | 438.17 |
| 867-580CSR <sup>1</sup> | 8X3         | 4     | 1 | 0  | 096 | 464.46 |
| 867-582CSR              | 8X4         | 4     | 1 | 0  | 096 | 492.44 |
| 867-585CSR              | 8X6         | 6     | 1 | 0  | 096 | 512.00 |
| 867-624CSR              | 10X4        | 4     | 1 | 0  | 096 | 586.05 |
| 867-626CSR              | 10X6        | 6     | 1 | 0  | 096 | 673.91 |
| 867-664CSR              | 12X4        | 4     | 1 | 0  | 096 | 734.60 |
| 867-666CSR              | 12X6        | 6     | 1 | 0  | 096 | 852.07 |

<sup>1</sup> Outlet-sized with Bushing

**Clamp-On Saddle x SR Thread Single Outlet, CPVC Gray**

**with EPDM O-ring Seal & SS Hardware**



2"- 4" 235, 6" 200, 8"-12" 150 psi @ 73°F (23°C)

|                          |         |       |   |    |     |        |
|--------------------------|---------|-------|---|----|-----|--------|
| 867S-245CSR <sup>1</sup> | 2X1/4   | 1-1/8 | 1 | 10 | 096 | 115.88 |
| 867S-247CSR              | 2X1/2   | 3/4   | 1 | 10 | 096 | 112.84 |
| 867S-248CSR              | 2X3/4   | 7/8   | 1 | 10 | 096 | 112.84 |
| 867S-249CSR              | 2X1     | 1-1/8 | 1 | 10 | 096 | 112.84 |
| 867S-250CSR              | 2X1-1/4 | 1-1/2 | 1 | 10 | 096 | 112.84 |



# Clamp-On Saddles

## Clamp-On Saddles

| Part Number | Size | Hole Saw Dia | Std Pk | Mstr Ctn | Prod Code | MSRP |
|-------------|------|--------------|--------|----------|-----------|------|
|-------------|------|--------------|--------|----------|-----------|------|

### Clamp-On Saddle x SR Thread Single Outlet, CPVC Gray

(continued)

with EPDM O-ring Seal & SS Hardware

|                          |             |       |   |    |     |         |
|--------------------------|-------------|-------|---|----|-----|---------|
| 867S-251CSR              | 2X1-1/2     | 1-1/2 | 1 | 10 | 096 | 112.84  |
| 867S-291CSR              | 2-1/2X1-1/2 | 1-3/4 | 1 | 10 | 096 | 151.06  |
| 867S-331CSR <sup>1</sup> | 3X1/4       | 1-1/8 | 1 | 10 | 096 | 155.84  |
| 867S-333CSR <sup>1</sup> | 3X1/2       | 7/8   | 1 | 10 | 096 | 151.06  |
| 867S-334CSR              | 3X3/4       | 7/8   | 1 | 10 | 096 | 151.06  |
| 867S-335CSR              | 3X1         | 1-1/8 | 1 | 10 | 096 | 151.06  |
| 867S-336CSR <sup>1</sup> | 3X1-1/4     | 2-1/4 | 1 | 10 | 096 | 151.06  |
| 867S-337CSR <sup>1</sup> | 3X1-1/2     | 2-1/4 | 1 | 10 | 096 | 151.06  |
| 867S-338CSR              | 3X2         | 2-1/4 | 1 | 10 | 096 | 151.06  |
| 867S-413CSR <sup>1</sup> | 4X1/4       | 1-1/8 | 1 | 8  | 096 | 195.91  |
| 867S-415CSR <sup>1</sup> | 4X1/2       | 1-1/8 | 1 | 10 | 096 | 190.11  |
| 867S-416CSR <sup>1</sup> | 4X3/4       | 1-1/8 | 1 | 10 | 096 | 190.11  |
| 867S-417CSR              | 4X1         | 1-1/8 | 1 | 8  | 096 | 190.11  |
| 867S-418CSR <sup>1</sup> | 4X1-1/4     | 1-3/4 | 1 | 8  | 096 | 190.11  |
| 867S-419CSR              | 4X1-1/2     | 1-3/4 | 1 | 8  | 096 | 190.11  |
| 867S-420CSR              | 4X2         | 2-1/4 | 1 | 8  | 096 | 190.11  |
| 867S-421CSR <sup>1</sup> | 4X2-1/2     | 3     | 1 | 4  | 096 | 201.59  |
| 867S-422CSR              | 4X3         | 3     | 1 | 4  | 096 | 211.04  |
| 867S-521CSR <sup>1</sup> | 6X1/4       | 1-1/8 | 1 | 8  | 096 | 328.65  |
| 867S-523CSR <sup>1</sup> | 6X1/2       | 1-1/8 | 1 | 4  | 096 | 316.84  |
| 867S-524CSR <sup>1</sup> | 6X3/4       | 1-1/8 | 1 | 4  | 096 | 316.84  |
| 867S-525CSR              | 6X1         | 1-1/8 | 1 | 4  | 096 | 316.84  |
| 867S-526CSR <sup>1</sup> | 6X1-1/4     | 2-1/4 | 1 | 4  | 096 | 316.84  |
| 867S-527CSR <sup>1</sup> | 6X1-1/2     | 2-1/4 | 1 | 4  | 096 | 316.84  |
| 867S-528CSR              | 6X2         | 2-1/4 | 1 | 4  | 096 | 316.84  |
| 867S-529CSR <sup>1</sup> | 6X2-1/2     | 3     | 1 | 4  | 096 | 329.51  |
| 867S-530CSR              | 6X3         | 3     | 1 | 4  | 096 | 340.56  |
| 867S-532CSR              | 6X4         | 4     | 1 | 4  | 096 | 355.56  |
| 867S-571CSR <sup>1</sup> | 8X1/4       | 4     | 1 | 0  | 096 | 583.61  |
| 867S-573CSR              | 8X1/2       | 4     | 1 | 0  | 096 | 562.88  |
| 867S-574CSR <sup>1</sup> | 8X3/4       | 4     | 1 | 0  | 096 | 562.88  |
| 867S-575CSR <sup>1</sup> | 8X1         | 4     | 1 | 0  | 096 | 562.88  |
| 867S-576CSR <sup>1</sup> | 8X1-1/4     | 4     | 1 | 0  | 096 | 562.88  |
| 867S-577CSR <sup>1</sup> | 8X1-1/2     | 4     | 1 | 0  | 096 | 562.88  |
| 867S-578CSR <sup>1</sup> | 8X2         | 4     | 1 | 0  | 096 | 562.88  |
| 867S-579CSR <sup>1</sup> | 8X2-1/2     | 4     | 1 | 0  | 096 | 619.15  |
| 867S-580CSR <sup>1</sup> | 8X3         | 4     | 1 | 0  | 096 | 650.05  |
| 867S-582CSR              | 8X4         | 4     | 1 | 0  | 096 | 689.04  |
| 867S-585CSR              | 8X6         | 6     | 1 | 0  | 096 | 722.78  |
| 867S-624CSR              | 10X4        | 4     | 1 | 0  | 096 | 819.97  |
| 867S-626CSR              | 10X6        | 6     | 1 | 0  | 096 | 942.97  |
| 867S-664CSR              | 12X4        | 4     | 1 | 0  | 096 | 1027.83 |
| 867S-666CSR              | 12X6        | 6     | 1 | 0  | 096 | 1192.33 |

<sup>1</sup> Outlet-sized with Bushing

| Part Number | Size | Hole Saw Dia | Std Pk | Mstr Ctn | Prod Code | MSRP |
|-------------|------|--------------|--------|----------|-----------|------|
|-------------|------|--------------|--------|----------|-----------|------|

### Clamp-On Saddle x Socket Double Outlet, CPVC Gray

with FKM O-ring Seal & Zinc-Plated Hardware



2"- 4" 235, 6" 200, 8"-12" 150 psi @ 73°F (23°C)

|                        |             |       |   |    |     |         |
|------------------------|-------------|-------|---|----|-----|---------|
| 868V-247C              | 2X1/2       | 3/4   | 1 | 10 | 096 | 89.95   |
| 868V-248C              | 2X3/4       | 7/8   | 1 | 10 | 096 | 89.95   |
| 868V-249C              | 2X1         | 1-1/8 | 1 | 10 | 096 | 89.95   |
| 868V-250C              | 2X1-1/4     | 1-1/2 | 1 | 10 | 096 | 89.95   |
| 868V-251C              | 2X1-1/2     | 1-1/2 | 1 | 10 | 096 | 89.95   |
| 868V-291C              | 2-1/2X1-1/2 | 1-3/4 | 1 | 10 | 096 | 109.99  |
| 868V-333C <sup>1</sup> | 3X1/2       | 7/8   | 1 | 10 | 096 | 109.99  |
| 868V-334C              | 3X3/4       | 7/8   | 1 | 10 | 096 | 109.99  |
| 868V-335C              | 3X1         | 1-1/8 | 1 | 10 | 096 | 109.99  |
| 868V-336C <sup>1</sup> | 3X1-1/4     | 2-1/4 | 1 | 10 | 096 | 109.99  |
| 868V-337C <sup>1</sup> | 3X1-1/2     | 2-1/4 | 1 | 10 | 096 | 109.99  |
| 868V-338C <sup>1</sup> | 3X2         | 2-1/4 | 1 | 10 | 096 | 109.99  |
| 868V-415C <sup>1</sup> | 4X1/2       | 1-1/8 | 1 | 10 | 096 | 148.08  |
| 868V-416C <sup>1</sup> | 4X3/4       | 1-1/8 | 1 | 10 | 096 | 148.08  |
| 868V-417C              | 4X1         | 1-1/8 | 1 | 8  | 096 | 148.08  |
| 868V-418C <sup>1</sup> | 4X1-1/4     | 1-3/4 | 1 | 8  | 096 | 148.08  |
| 868V-419C              | 4X1-1/2     | 1-3/4 | 1 | 8  | 096 | 148.08  |
| 868V-420C              | 4X2         | 2-1/4 | 1 | 8  | 096 | 148.08  |
| 868V-421C <sup>1</sup> | 4X2-1/2     | 3     | 1 | 4  | 096 | 154.73  |
| 868V-422C              | 4X3         | 3     | 4 | 0  | 096 | 168.86  |
| 868V-523C <sup>1</sup> | 6X1/2       | 1-1/8 | 1 | 4  | 096 | 239.59  |
| 868V-524C <sup>1</sup> | 6X3/4       | 1-1/8 | 1 | 4  | 096 | 239.59  |
| 868V-525C              | 6X1         | 1-1/8 | 1 | 4  | 096 | 239.59  |
| 868V-526C <sup>1</sup> | 6X1-1/4     | 2-1/4 | 1 | 4  | 096 | 239.59  |
| 868V-527C <sup>1</sup> | 6X1-1/2     | 2-1/4 | 1 | 4  | 096 | 239.59  |
| 868V-528C              | 6X2         | 2-1/4 | 1 | 4  | 096 | 239.59  |
| 868V-529C              | 6X2-1/2     | 3     | 1 | 4  | 096 | 277.49  |
| 868V-530C              | 6X3         | 3     | 1 | 4  | 096 | 292.58  |
| 868V-532C              | 6X4         | 4     | 1 | 4  | 096 | 305.24  |
| 868V-573C <sup>1</sup> | 8X1/2       | 4     | 1 | 0  | 096 | 463.86  |
| 868V-574C <sup>1</sup> | 8X3/4       | 4     | 1 | 0  | 096 | 463.86  |
| 868V-575C <sup>1</sup> | 8X1         | 4     | 1 | 0  | 096 | 463.86  |
| 868V-576C <sup>1</sup> | 8X1-1/4     | 4     | 1 | 0  | 096 | 463.86  |
| 868V-577C <sup>1</sup> | 8X1-1/2     | 4     | 1 | 0  | 096 | 463.86  |
| 868V-578C <sup>1</sup> | 8X2         | 4     | 1 | 0  | 096 | 463.86  |
| 868V-579C <sup>1</sup> | 8X2-1/2     | 4     | 1 | 0  | 096 | 510.20  |
| 868V-580C <sup>1</sup> | 8X3         | 4     | 1 | 0  | 096 | 535.67  |
| 868V-582C              | 8X4         | 4     | 1 | 0  | 096 | 567.78  |
| 868V-585C              | 8X6         | 6     | 1 | 0  | 096 | 630.28  |
| 868V-624C              | 10X4        | 4     | 1 | 0  | 096 | 749.95  |
| 868V-626C              | 10X6        | 6     | 1 | 0  | 096 | 862.72  |
| 868V-664C              | 12X4        | 4     | 1 | 0  | 096 | 940.16  |
| 868V-666C              | 12X6        | 6     | 1 | 0  | 096 | 1090.44 |

<sup>1</sup> Outlet-sized with Bushing

Schedule 80 CPVC Product  
**Clamp-On Saddles**



**Clamp-On Saddles**

| Part Number | Size | Hole Saw Dia | Std Pk | Mstr Ctn | Prod Code | MSRP |
|-------------|------|--------------|--------|----------|-----------|------|
|-------------|------|--------------|--------|----------|-----------|------|

**Clamp-On Saddle x Socket Double Outlet, CPVC Gray**

with FKM O-ring Seal & SS Hardware



2"- 4" 235, 6" 200, 8"-12" 150 psi @ 73°F (23°C)

|                         |             |       |   |    |     |         |
|-------------------------|-------------|-------|---|----|-----|---------|
| 868SV-247C              | 2X1/2       | 3/4   | 1 | 10 | 096 | 137.25  |
| 868SV-248C              | 2X3/4       | 7/8   | 1 | 10 | 096 | 137.25  |
| 868SV-249C              | 2X1         | 1-1/8 | 1 | 10 | 096 | 137.25  |
| 868SV-250C              | 2X1-1/4     | 1-1/2 | 1 | 10 | 096 | 137.25  |
| 868SV-251C              | 2X1-1/2     | 1-1/2 | 1 | 10 | 096 | 137.25  |
| 868SV-291C              | 2-1/2X1-1/2 | 1-3/4 | 1 | 10 | 096 | 182.60  |
| 868SV-333C <sup>1</sup> | 3X1/2       | 7/8   | 1 | 10 | 096 | 182.60  |
| 868SV-334C              | 3X3/4       | 7/8   | 1 | 10 | 096 | 182.60  |
| 868SV-335C              | 3X1         | 1-1/8 | 1 | 10 | 096 | 182.60  |
| 868SV-336C <sup>1</sup> | 3X1-1/4     | 2-1/4 | 1 | 10 | 096 | 182.60  |
| 868SV-337C <sup>1</sup> | 3X1-1/2     | 2-1/4 | 1 | 10 | 096 | 182.60  |
| 868SV-338C              | 3X2         | 2-1/4 | 1 | 10 | 096 | 182.60  |
| 868SV-415C <sup>1</sup> | 4X1/2       | 1-1/8 | 1 | 10 | 096 | 232.05  |
| 868SV-416C <sup>1</sup> | 4X3/4       | 1-1/8 | 1 | 10 | 096 | 232.05  |
| 868SV-417C              | 4X1         | 1-1/8 | 1 | 8  | 096 | 232.05  |
| 868SV-418C <sup>1</sup> | 4X1-1/4     | 1-3/4 | 1 | 8  | 096 | 232.05  |
| 868SV-419C              | 4X1-1/2     | 1-3/4 | 1 | 8  | 096 | 232.05  |
| 868SV-420C              | 4X2         | 2-1/4 | 1 | 8  | 096 | 232.05  |
| 868SV-421C <sup>1</sup> | 4X2-1/2     | 3     | 1 | 4  | 096 | 241.45  |
| 868SV-422C              | 4X3         | 3     | 4 | 0  | 096 | 257.22  |
| 868SV-523C <sup>1</sup> | 6X1/2       | 1-1/8 | 1 | 4  | 096 | 385.99  |
| 868SV-524C <sup>1</sup> | 6X3/4       | 1-1/8 | 1 | 4  | 096 | 385.99  |
| 868SV-525C              | 6X1         | 1-1/8 | 1 | 4  | 096 | 385.99  |
| 868SV-526C <sup>1</sup> | 6X1-1/4     | 2-1/4 | 1 | 4  | 096 | 385.99  |
| 868SV-527C <sup>1</sup> | 6X1-1/2     | 2-1/4 | 1 | 4  | 096 | 385.99  |
| 868SV-528C              | 6X2         | 2-1/4 | 1 | 4  | 096 | 385.99  |
| 868SV-529C <sup>1</sup> | 6X2-1/2     | 3     | 1 | 4  | 096 | 397.86  |
| 868SV-530C              | 6X3         | 3     | 1 | 4  | 096 | 416.23  |
| 868SV-532C              | 6X4         | 4     | 1 | 4  | 096 | 426.14  |
| 868SV-573C <sup>1</sup> | 8X1/2       | 4     | 1 | 0  | 096 | 651.54  |
| 868SV-574C <sup>1</sup> | 8X3/4       | 4     | 1 | 0  | 096 | 651.54  |
| 868SV-575C <sup>1</sup> | 8X1         | 4     | 1 | 0  | 096 | 651.54  |
| 868SV-576C <sup>1</sup> | 8X1-1/4     | 4     | 1 | 0  | 096 | 651.54  |
| 868SV-577C <sup>1</sup> | 8X1-1/2     | 4     | 1 | 0  | 096 | 651.54  |
| 868SV-578C <sup>1</sup> | 8X2         | 4     | 1 | 0  | 096 | 651.54  |
| 868SV-579C <sup>1</sup> | 8X2-1/2     | 4     | 1 | 0  | 096 | 716.44  |
| 868SV-580C <sup>1</sup> | 8X3         | 4     | 1 | 0  | 096 | 752.45  |
| 868SV-582C              | 8X4         | 4     | 1 | 0  | 096 | 797.54  |
| 868SV-585C              | 8X6         | 6     | 1 | 0  | 096 | 885.39  |
| 868SV-624C              | 10X4        | 4     | 1 | 0  | 096 | 1053.62 |
| 868SV-626C              | 10X6        | 6     | 1 | 0  | 096 | 1211.80 |
| 868SV-664C              | 12X4        | 4     | 1 | 0  | 096 | 1320.56 |
| 868SV-666C              | 12X6        | 6     | 1 | 0  | 096 | 1532.01 |

<sup>1</sup> Outlet-sized with Bushing

| Part Number | Size | Hole Saw Dia | Std Pk | Mstr Ctn | Prod Code | MSRP |
|-------------|------|--------------|--------|----------|-----------|------|
|-------------|------|--------------|--------|----------|-----------|------|

**Clamp-On Saddle x Socket Double Outlet, CPVC Gray**

with EPDM O-ring Seal & Zinc-Plated Hardware



2"- 4" 235, 6" 200, 8"-12" 150 psi @ 73°F (23°C)

|                       |             |       |   |    |     |         |
|-----------------------|-------------|-------|---|----|-----|---------|
| 868-247C              | 2X1/2       | 3/4   | 1 | 10 | 096 | 75.44   |
| 868-248C              | 2X3/4       | 7/8   | 1 | 10 | 096 | 75.44   |
| 868-249C              | 2X1         | 1-1/8 | 1 | 10 | 096 | 75.44   |
| 868-250C              | 2X1-1/4     | 1-1/2 | 1 | 10 | 096 | 75.44   |
| 868-251C              | 2X1-1/2     | 1-1/2 | 1 | 10 | 096 | 75.44   |
| 868-291C              | 2-1/2X1-1/2 | 1-3/4 | 1 | 10 | 096 | 103.59  |
| 868-333C <sup>1</sup> | 3X1/2       | 7/8   | 1 | 10 | 096 | 103.59  |
| 868-334C              | 3X3/4       | 7/8   | 1 | 10 | 096 | 103.59  |
| 868-335C              | 3X1         | 1-1/8 | 1 | 10 | 096 | 103.59  |
| 868-336C <sup>1</sup> | 3X1-1/4     | 2-1/4 | 1 | 10 | 096 | 103.59  |
| 868-337C <sup>1</sup> | 3X1-1/2     | 2-1/4 | 1 | 10 | 096 | 103.59  |
| 868-338C              | 3X2         | 2-1/4 | 1 | 10 | 096 | 103.59  |
| 868-415C <sup>1</sup> | 4X1/2       | 1-1/8 | 1 | 10 | 096 | 130.02  |
| 868-416C <sup>1</sup> | 4X3/4       | 1-1/8 | 1 | 10 | 096 | 130.02  |
| 868-417C              | 4X1         | 1-1/8 | 1 | 8  | 096 | 130.02  |
| 868-418C <sup>1</sup> | 4X1-1/4     | 1-3/4 | 1 | 8  | 096 | 130.02  |
| 868-419C              | 4X1-1/2     | 1-3/4 | 1 | 8  | 096 | 130.02  |
| 868-420C              | 4X2         | 2-1/4 | 1 | 8  | 096 | 130.02  |
| 868-421C <sup>1</sup> | 4X2-1/2     | 3     | 1 | 4  | 096 | 136.91  |
| 868-422C              | 4X3         | 3     | 1 | 4  | 096 | 148.82  |
| 868-523C <sup>1</sup> | 6X1/2       | 1-1/8 | 1 | 4  | 096 | 217.07  |
| 868-524C <sup>1</sup> | 6X3/4       | 1-1/8 | 1 | 4  | 096 | 217.07  |
| 868-525C              | 6X1         | 1-1/8 | 1 | 4  | 096 | 217.07  |
| 868-526C <sup>1</sup> | 6X1-1/4     | 2-1/4 | 1 | 4  | 096 | 217.07  |
| 868-527C <sup>1</sup> | 6X1-1/2     | 2-1/4 | 1 | 4  | 096 | 217.07  |
| 868-528C              | 6X2         | 2-1/4 | 1 | 4  | 096 | 217.07  |
| 868-529C <sup>1</sup> | 6X2-1/2     | 3     | 1 | 4  | 096 | 230.76  |
| 868-530C              | 6X3         | 3     | 1 | 4  | 096 | 243.96  |
| 868-532C              | 6X4         | 4     | 1 | 4  | 096 | 251.82  |
| 868-573C <sup>1</sup> | 8X1/2       | 4     | 1 | 0  | 096 | 434.97  |
| 868-574C <sup>1</sup> | 8X3/4       | 4     | 1 | 0  | 096 | 434.97  |
| 868-575C <sup>1</sup> | 8X1         | 4     | 1 | 0  | 096 | 434.97  |
| 868-576C <sup>1</sup> | 8X1-1/4     | 4     | 1 | 0  | 096 | 434.97  |
| 868-577C <sup>1</sup> | 8X1-1/2     | 4     | 1 | 0  | 096 | 434.97  |
| 868-578C <sup>1</sup> | 8X2         | 4     | 1 | 0  | 096 | 434.97  |
| 868-579C <sup>1</sup> | 8X2-1/2     | 4     | 1 | 0  | 096 | 478.40  |
| 868-580C <sup>1</sup> | 8X3         | 4     | 1 | 0  | 096 | 502.38  |
| 868-582C              | 8X4         | 4     | 1 | 0  | 096 | 532.47  |
| 868-585C              | 8X6         | 6     | 1 | 0  | 096 | 591.04  |
| 868-624C              | 10X4        | 4     | 1 | 0  | 096 | 703.40  |
| 868-626C              | 10X6        | 6     | 1 | 0  | 096 | 808.84  |
| 868-664C              | 12X4        | 4     | 1 | 0  | 096 | 881.57  |
| 868-666C              | 12X6        | 6     | 1 | 0  | 096 | 1022.81 |

<sup>1</sup> Outlet-sized with Bushing



Schedule 80 CPVC Product

**Clamp-On Saddles**

**Clamp-On Saddles**

| Part Number | Size | Hole Saw Dia | Std Pk | Mstr Ctn | Prod Code | MSRP |
|-------------|------|--------------|--------|----------|-----------|------|
|-------------|------|--------------|--------|----------|-----------|------|

**Clamp-On Saddle x Socket Double Outlet, CPVC Gray**

**with EPDM O-ring Seal & SS Hardware**

2" - 4" 235, 6" 200, 8"-12" 150 psi @ 73°F (23°C)

|                        |             |       |   |    |     |         |
|------------------------|-------------|-------|---|----|-----|---------|
| 868S-247C              | 2X1/2       | 3/4   | 1 | 10 | 096 | 119.33  |
| 868S-248C              | 2X3/4       | 7/8   | 1 | 10 | 096 | 119.33  |
| 868S-249C              | 2X1         | 1-1/8 | 1 | 10 | 096 | 119.33  |
| 868S-250C              | 2X1-1/4     | 1-1/2 | 1 | 10 | 096 | 119.33  |
| 868S-251C              | 2X1-1/2     | 1-1/2 | 1 | 10 | 096 | 119.33  |
| 868S-291C              | 2-1/2X1-1/2 | 1-3/4 | 1 | 10 | 096 | 158.71  |
| 868S-333C <sup>1</sup> | 3X1/2       | 7/8   | 1 | 10 | 096 | 158.71  |
| 868S-334C              | 3X3/4       | 7/8   | 1 | 10 | 096 | 158.71  |
| 868S-335C              | 3X1         | 1-1/8 | 1 | 10 | 096 | 158.71  |
| 868S-336C <sup>1</sup> | 3X1-1/4     | 2-1/4 | 1 | 10 | 096 | 158.71  |
| 868S-337C <sup>1</sup> | 3X1-1/2     | 2-1/4 | 1 | 10 | 096 | 158.71  |
| 868S-338C              | 3X2         | 2-1/4 | 1 | 10 | 096 | 158.71  |
| 868S-415C <sup>1</sup> | 4X1/2       | 1-1/8 | 1 | 10 | 096 | 203.38  |
| 868S-416C <sup>1</sup> | 4X3/4       | 1-1/8 | 1 | 10 | 096 | 203.38  |
| 868S-417C              | 4X1         | 1-1/8 | 1 | 8  | 096 | 203.38  |
| 868S-418C <sup>1</sup> | 4X1-1/4     | 1-3/4 | 1 | 8  | 096 | 203.38  |
| 868S-419C              | 4X1-1/2     | 1-3/4 | 1 | 8  | 096 | 203.38  |
| 868S-420C              | 4X2         | 2-1/4 | 1 | 8  | 096 | 203.38  |
| 868S-421C <sup>1</sup> | 4X2-1/2     | 3     | 1 | 4  | 096 | 212.84  |
| 868S-422C              | 4X3         | 3     | 4 | 0  | 096 | 222.59  |
| 868S-523C <sup>1</sup> | 6X1/2       | 1-1/8 | 1 | 4  | 096 | 339.64  |
| 868S-524C <sup>1</sup> | 6X3/4       | 1-1/8 | 1 | 4  | 096 | 339.64  |
| 868S-525C              | 6X1         | 1-1/8 | 1 | 4  | 096 | 339.64  |
| 868S-526C <sup>1</sup> | 6X1-1/4     | 2-1/4 | 1 | 4  | 096 | 339.64  |
| 868S-527C <sup>1</sup> | 6X1-1/2     | 2-1/4 | 1 | 4  | 096 | 339.64  |
| 868S-528C              | 6X2         | 2-1/4 | 1 | 4  | 096 | 339.64  |
| 868S-529C <sup>1</sup> | 6X2-1/2     | 3     | 1 | 4  | 096 | 356.48  |
| 868S-530C              | 6X3         | 3     | 1 | 4  | 096 | 365.08  |
| 868S-532C              | 6X4         | 4     | 1 | 4  | 096 | 378.38  |
| 868S-573C <sup>1</sup> | 8X1/2       | 4     | 1 | 0  | 096 | 592.06  |
| 868S-574C <sup>1</sup> | 8X3/4       | 4     | 1 | 0  | 096 | 592.06  |
| 868S-575C <sup>1</sup> | 8X1         | 4     | 1 | 0  | 096 | 592.06  |
| 868S-576C <sup>1</sup> | 8X1-1/4     | 4     | 1 | 0  | 096 | 592.06  |
| 868S-577C <sup>1</sup> | 8X1-1/2     | 4     | 1 | 0  | 096 | 592.06  |
| 868S-578C <sup>1</sup> | 8X2         | 4     | 1 | 0  | 096 | 592.06  |
| 868S-579C <sup>1</sup> | 8X2-1/2     | 4     | 1 | 0  | 096 | 651.25  |
| 868S-580C <sup>1</sup> | 8X3         | 4     | 1 | 0  | 096 | 683.84  |
| 868S-582C              | 8X4         | 4     | 1 | 0  | 096 | 724.86  |
| 868S-585C              | 8X6         | 6     | 1 | 0  | 096 | 804.76  |
| 868S-624C              | 10X4        | 4     | 1 | 0  | 096 | 957.61  |
| 868S-626C              | 10X6        | 6     | 1 | 0  | 096 | 1101.26 |
| 868S-664C              | 12X4        | 4     | 1 | 0  | 096 | 1200.38 |
| 868S-666C              | 12X6        | 6     | 1 | 0  | 096 | 1392.38 |



**Clamp-On Saddle x SR Thread Double Outlet, CPVC Gray**

**with FKM O-ring Seal & Zinc-Plated Hardware**



2" - 4" 235, 6" 200, 8"-12" 150 psi @ 73°F (23°C)

|                          |             |       |   |    |     |         |
|--------------------------|-------------|-------|---|----|-----|---------|
| 869V-247CSR              | 2X1/2       | 3/4   | 1 | 10 | 096 | 100.62  |
| 869V-248CSR              | 2X3/4       | 7/8   | 1 | 10 | 096 | 100.62  |
| 869V-249CSR              | 2X1         | 1-1/8 | 1 | 10 | 096 | 100.62  |
| 869V-250CSR              | 2X1-1/4     | 1-1/2 | 1 | 10 | 096 | 100.62  |
| 869V-251CSR              | 2X1-1/2     | 1-1/2 | 1 | 10 | 096 | 100.62  |
| 869V-291CSR              | 2-1/2X1-1/2 | 1-3/4 | 1 | 10 | 096 | 137.97  |
| 869V-333CSR <sup>1</sup> | 3X1/2       | 7/8   | 1 | 10 | 096 | 137.97  |
| 869V-334CSR              | 3X3/4       | 7/8   | 1 | 10 | 096 | 137.97  |
| 869V-335CSR              | 3X1         | 1-1/8 | 1 | 10 | 096 | 137.97  |
| 869V-336CSR <sup>1</sup> | 3X1-1/4     | 2-1/4 | 1 | 10 | 096 | 137.97  |
| 869V-337CSR <sup>1</sup> | 3X1-1/2     | 2-1/4 | 1 | 10 | 096 | 137.97  |
| 869V-338CSR              | 3X2         | 2-1/4 | 1 | 10 | 096 | 137.97  |
| 869V-415CSR <sup>1</sup> | 4X1/2       | 4-1/2 | 1 | 10 | 096 | 168.85  |
| 869V-416CSR <sup>1</sup> | 4X3/4       | 1-1/8 | 1 | 10 | 096 | 168.85  |
| 869V-417CSR              | 4X1         | 1-1/8 | 1 | 8  | 096 | 168.85  |
| 869V-418CSR <sup>1</sup> | 4X1-1/4     | 1-3/4 | 1 | 8  | 096 | 168.85  |
| 869V-419CSR              | 4X1-1/2     | 1-3/4 | 1 | 8  | 096 | 168.85  |
| 869V-420CSR              | 4X2         | 2-1/4 | 1 | 8  | 096 | 168.85  |
| 869V-421CSR <sup>1</sup> | 4X2-1/2     | 3     | 1 | 4  | 096 | 181.34  |
| 869V-422CSR              | 4X3         | 3     | 4 | 0  | 096 | 190.99  |
| 869V-523CSR <sup>1</sup> | 6X1/2       | 1-1/8 | 1 | 4  | 096 | 279.98  |
| 869V-524CSR <sup>1</sup> | 6X3/4       | 1-1/8 | 1 | 4  | 096 | 279.98  |
| 869V-525CSR              | 6X1         | 1-1/8 | 1 | 4  | 096 | 279.98  |
| 869V-526CSR <sup>1</sup> | 6X1-1/4     | 2-1/4 | 1 | 4  | 096 | 279.98  |
| 869V-527CSR <sup>1</sup> | 6X1-1/2     | 2-1/4 | 1 | 4  | 096 | 279.98  |
| 869V-528CSR              | 6X2         | 2-1/4 | 1 | 4  | 096 | 279.98  |
| 869V-529CSR <sup>1</sup> | 6X2-1/2     | 3     | 1 | 4  | 096 | 294.07  |
| 869V-530CSR              | 6X3         | 3     | 1 | 4  | 096 | 306.22  |
| 869V-532CSR              | 6X4         | 4     | 1 | 4  | 096 | 324.36  |
| 869V-573CSR <sup>1</sup> | 8X1/2       | 4     | 1 | 0  | 096 | 515.63  |
| 869V-574CSR <sup>1</sup> | 8X3/4       | 4     | 1 | 0  | 096 | 515.63  |
| 869V-575CSR <sup>1</sup> | 8X1         | 4     | 1 | 0  | 096 | 515.63  |
| 869V-576CSR <sup>1</sup> | 8X1-1/4     | 4     | 1 | 0  | 096 | 515.63  |
| 869V-577CSR <sup>1</sup> | 8X1-1/2     | 4     | 1 | 0  | 096 | 515.63  |
| 869V-578CSR <sup>1</sup> | 8X2         | 4     | 1 | 0  | 096 | 515.63  |
| 869V-579CSR <sup>1</sup> | 8X2-1/2     | 4     | 1 | 0  | 096 | 567.18  |
| 869V-580CSR <sup>1</sup> | 8X3         | 4     | 1 | 0  | 096 | 595.49  |
| 869V-582CSR              | 8X4         | 4     | 1 | 0  | 096 | 631.20  |
| 869V-585CSR              | 8X6         | 6     | 1 | 0  | 096 | 698.18  |
| 869V-624CSR              | 10X4        | 4     | 1 | 0  | 096 | 750.97  |
| 869V-626CSR              | 10X6        | 6     | 1 | 0  | 096 | 863.74  |
| 869V-664CSR              | 12X4        | 4     | 1 | 0  | 096 | 941.54  |
| 869V-666CSR              | 12X6        | 6     | 1 | 0  | 096 | 1092.03 |

<sup>1</sup> Outlet-sized with Bushing

Schedule 80 CPVC Product  
**Clamp-On Saddles**



**Clamp-On Saddles**

| Part Number | Size | Hole Saw Dia | Std Pk | Mstr Ctn | Prod Code | MSRP |
|-------------|------|--------------|--------|----------|-----------|------|
|-------------|------|--------------|--------|----------|-----------|------|

**Clamp-On Saddle x SR Thread Double Outlet, CPVC Gray**

with FKM O-ring Seal & SS Hardware



2"- 4" 235, 6" 200, 8"-12" 150 psi @ 73°F (23°C)

|                           |             |       |   |    |     |         |
|---------------------------|-------------|-------|---|----|-----|---------|
| 869SV-247CSR              | 2X1/2       | 3/4   | 1 | 10 | 096 | 148.08  |
| 869SV-248CSR              | 2X3/4       | 7/8   | 1 | 10 | 096 | 148.08  |
| 869SV-249CSR              | 2X1         | 1-1/8 | 1 | 10 | 096 | 148.08  |
| 869SV-250CSR              | 2X1-1/4     | 1-1/2 | 1 | 10 | 096 | 148.08  |
| 869SV-251CSR              | 2X1-1/2     | 1-1/2 | 1 | 10 | 096 | 148.08  |
| 869SV-291CSR              | 2-1/2X1-1/2 | 1-1/2 | 1 | 10 | 096 | 187.67  |
| 869SV-333CSR <sup>1</sup> | 3X1/2       | 7/8   | 1 | 10 | 096 | 187.67  |
| 869SV-334CSR              | 3X3/4       | 7/8   | 1 | 10 | 096 | 187.67  |
| 869SV-335CSR              | 3X1         | 1-1/8 | 1 | 10 | 096 | 187.67  |
| 869SV-336CSR <sup>1</sup> | 3X1-1/4     | 2-1/4 | 1 | 10 | 096 | 187.67  |
| 869SV-337CSR <sup>1</sup> | 3X1-1/2     | 2-1/4 | 1 | 10 | 096 | 187.67  |
| 869SV-338CSR              | 3X2         | 2-1/4 | 1 | 10 | 096 | 187.67  |
| 869SV-415CSR <sup>1</sup> | 4X1/2       | 1-1/8 | 1 | 10 | 096 | 246.44  |
| 869SV-416CSR <sup>1</sup> | 4X3/4       | 1-1/8 | 1 | 10 | 096 | 246.44  |
| 869SV-417CSR              | 4X1         | 1-1/8 | 1 | 8  | 096 | 246.44  |
| 869SV-418CSR <sup>1</sup> | 4X1-1/4     | 1-3/4 | 1 | 8  | 096 | 246.44  |
| 869SV-419CSR              | 4X1-1/2     | 1-3/4 | 1 | 8  | 096 | 246.44  |
| 869SV-420CSR              | 4X2         | 2-1/4 | 1 | 8  | 096 | 246.44  |
| 869SV-421CSR <sup>1</sup> | 4X2-1/2     | 3     | 1 | 4  | 096 | 258.74  |
| 869SV-422CSR              | 4X3         | 3     | 4 | 0  | 096 | 277.19  |
| 869SV-523CSR <sup>1</sup> | 6X1/2       | 1-1/8 | 1 | 4  | 096 | 440.36  |
| 869SV-524CSR <sup>1</sup> | 6X3/4       | 1-1/8 | 1 | 4  | 096 | 440.36  |
| 869SV-525CSR              | 6X1         | 1-1/8 | 1 | 4  | 096 | 440.36  |
| 869SV-526CSR <sup>1</sup> | 6X1-1/4     | 2-1/4 | 1 | 4  | 096 | 440.36  |
| 869SV-527CSR <sup>1</sup> | 6X1-1/2     | 2-1/4 | 1 | 4  | 096 | 440.36  |
| 869SV-528CSR              | 6X2         | 2-1/4 | 1 | 4  | 096 | 440.36  |
| 869SV-529CSR <sup>1</sup> | 6X2-1/2     | 3     | 1 | 4  | 096 | 457.27  |
| 869SV-530CSR              | 6X3         | 3     | 1 | 4  | 096 | 471.78  |
| 869SV-532CSR              | 6X4         | 4     | 1 | 4  | 096 | 482.59  |
| 869SV-573CSR <sup>1</sup> | 8X1/2       | 4     | 1 | 0  | 096 | 721.26  |
| 869SV-574CSR <sup>1</sup> | 8X3/4       | 4     | 1 | 0  | 096 | 721.26  |
| 869SV-575CSR <sup>1</sup> | 8X1         | 4     | 1 | 0  | 096 | 721.26  |
| 869SV-576CSR <sup>1</sup> | 8X1-1/4     | 4     | 1 | 0  | 096 | 721.26  |
| 869SV-577CSR <sup>1</sup> | 8X1-1/2     | 4     | 1 | 0  | 096 | 721.26  |
| 869SV-578CSR <sup>1</sup> | 8X2         | 4     | 1 | 0  | 096 | 721.26  |
| 869SV-579CSR <sup>1</sup> | 8X2-1/2     | 4     | 1 | 0  | 096 | 793.28  |
| 869SV-580CSR <sup>1</sup> | 8X3         | 4     | 1 | 0  | 096 | 818.39  |
| 869SV-582CSR              | 8X4         | 4     | 1 | 0  | 096 | 882.97  |
| 869SV-585CSR              | 8X6         | 6     | 1 | 0  | 096 | 943.36  |
| 869SV-624CSR              | 10X4        | 4     | 1 | 0  | 096 | 1050.72 |
| 869SV-626CSR              | 10X6        | 6     | 1 | 0  | 096 | 1208.39 |
| 869SV-664CSR              | 12X4        | 4     | 1 | 0  | 096 | 1317.13 |
| 869SV-666CSR              | 12X6        | 6     | 1 | 0  | 096 | 1527.99 |

<sup>1</sup> Outlet-sized with Bushing

| Part Number | Size | Hole Saw Dia | Std Pk | Mstr Ctn | Prod Code | MSRP |
|-------------|------|--------------|--------|----------|-----------|------|
|-------------|------|--------------|--------|----------|-----------|------|

**Clamp-On Saddle x SR Thread Double Outlet, CPVC Gray**

with EPDM O-ring Seal & Zinc-Plated Hardware



2"- 4" 235, 6" 200, 8"-12" 150 psi @ 73°F (23°C)

|                         |             |       |   |    |     |        |
|-------------------------|-------------|-------|---|----|-----|--------|
| 869-247CSR              | 2X1/2       | 3/4   | 1 | 10 | 096 | 87.43  |
| 869-248CSR              | 2X3/4       | 7/8   | 1 | 10 | 096 | 87.43  |
| 869-249CSR              | 2X1         | 1-1/8 | 1 | 10 | 096 | 87.43  |
| 869-250CSR              | 2X1-1/4     | 1-1/2 | 1 | 10 | 096 | 87.43  |
| 869-251CSR              | 2X1-1/2     | 1-1/2 | 1 | 10 | 096 | 87.43  |
| 869-291CSR              | 2-1/2X1-1/2 | 1-3/4 | 1 | 10 | 096 | 118.06 |
| 869-333CSR <sup>1</sup> | 3X1/2       | 7/8   | 1 | 10 | 096 | 118.06 |
| 869-334CSR              | 3X3/4       | 7/8   | 1 | 10 | 096 | 118.06 |
| 869-335CSR              | 3X1         | 1-1/8 | 1 | 10 | 096 | 118.06 |
| 869-336CSR <sup>1</sup> | 3X1-1/4     | 1-1/8 | 1 | 10 | 096 | 118.06 |
| 869-337CSR <sup>1</sup> | 3X1-1/2     | 2-1/4 | 1 | 10 | 096 | 118.06 |
| 869-338CSR              | 3X2         | 2-1/4 | 1 | 10 | 096 | 118.06 |
| 869-415CSR <sup>1</sup> | 4X1/2       | 1-1/8 | 1 | 10 | 096 | 146.55 |
| 869-416CSR <sup>1</sup> | 4X3/4       | 1-1/8 | 1 | 10 | 096 | 146.55 |
| 869-417CSR              | 4X1         | 1-1/8 | 1 | 8  | 096 | 146.55 |
| 869-418CSR <sup>1</sup> | 4X1-1/4     | 1-3/4 | 1 | 8  | 096 | 146.55 |
| 869-419CSR              | 4X1-1/2     | 1-3/4 | 1 | 8  | 096 | 146.55 |
| 869-420CSR              | 4X2         | 2-1/4 | 1 | 8  | 096 | 146.55 |
| 869-421CSR <sup>1</sup> | 4X2-1/2     | 3     | 1 | 4  | 096 | 162.07 |
| 869-422CSR              | 4X3         | 3     | 1 | 4  | 096 | 175.39 |
| 869-523CSR <sup>1</sup> | 6X1/2       | 1-1/8 | 1 | 4  | 096 | 239.39 |
| 869-524CSR <sup>1</sup> | 6X3/4       | 1-1/8 | 1 | 4  | 096 | 239.39 |
| 869-525CSR              | 6X1         | 1-1/8 | 1 | 4  | 096 | 239.39 |
| 869-526CSR <sup>1</sup> | 6X1-1/4     | 2-1/4 | 1 | 4  | 096 | 239.39 |
| 869-527CSR <sup>1</sup> | 6X1-1/2     | 2-1/4 | 1 | 4  | 096 | 239.39 |
| 869-528CSR              | 6X2         | 2-1/4 | 1 | 4  | 096 | 239.39 |
| 869-529CSR <sup>1</sup> | 6X2-1/2     | 3     | 1 | 4  | 096 | 256.23 |
| 869-530CSR              | 6X3         | 3     | 1 | 4  | 096 | 277.23 |
| 869-532CSR              | 6X4         | 4     | 1 | 4  | 096 | 294.01 |
| 869-573CSR <sup>1</sup> | 8X1/2       | 4     | 1 | 0  | 096 | 463.46 |
| 869-574CSR <sup>1</sup> | 8X3/4       | 4     | 1 | 0  | 096 | 463.46 |
| 869-575CSR <sup>1</sup> | 8X1         | 4     | 1 | 0  | 096 | 463.46 |
| 869-576CSR <sup>1</sup> | 8X1-1/4     | 4     | 1 | 0  | 096 | 463.46 |
| 869-577CSR <sup>1</sup> | 8X1-1/2     | 4     | 1 | 0  | 096 | 463.46 |
| 869-578CSR <sup>1</sup> | 8X2         | 4     | 1 | 0  | 096 | 463.46 |
| 869-579CSR <sup>1</sup> | 8X2-1/2     | 4     | 1 | 0  | 096 | 509.91 |
| 869-580CSR <sup>1</sup> | 8X3         | 4     | 1 | 0  | 096 | 535.51 |
| 869-582CSR              | 8X4         | 4     | 1 | 0  | 096 | 567.57 |
| 869-585CSR              | 8X6         | 6     | 1 | 0  | 096 | 613.27 |
| 869-624CSR              | 10X4        | 4     | 1 | 0  | 096 | 675.31 |
| 869-626CSR              | 10X6        | 6     | 1 | 0  | 096 | 776.75 |
| 869-664CSR              | 12X4        | 4     | 1 | 0  | 096 | 846.67 |
| 869-666CSR              | 12X6        | 6     | 1 | 0  | 096 | 982.11 |

<sup>1</sup> Outlet-sized with Bushing





# Clamp-On Saddles & Hot-Tap Saddles

## Clamp-On Saddles

| Part Number | Size | Hole Saw Dia | Std Pk | Mstr Ctn | Prod Code | MSRP |
|-------------|------|--------------|--------|----------|-----------|------|
|-------------|------|--------------|--------|----------|-----------|------|



**Clamp-On Saddle x SR Thread Double Outlet, CPVC Gray**

**with EPDM O-ring Seal & SS Hardware**

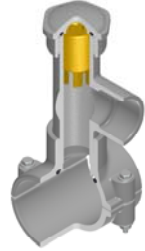
2"- 4" 235, 6" 200, 8"-12" 150 psi @ 73°F (23°C)

|                          |             |       |   |    |     |         |
|--------------------------|-------------|-------|---|----|-----|---------|
| 869S-247CSR              | 2X1/2       | 3/4   | 1 | 10 | 096 | 140.52  |
| 869S-248CSR              | 2X3/4       | 7/8   | 1 | 10 | 096 | 140.52  |
| 869S-249CSR              | 2X1         | 1-1/8 | 1 | 10 | 096 | 140.52  |
| 869S-250CSR              | 2X1-1/4     | 1-1/2 | 1 | 10 | 096 | 140.52  |
| 869S-251CSR              | 2X1-1/2     | 1-1/2 | 1 | 10 | 096 | 140.52  |
| 869S-291CSR              | 2-1/2X1-1/2 | 1-3/4 | 1 | 10 | 096 | 185.32  |
| 869S-333CSR <sup>1</sup> | 3X1/2       | 7/8   | 1 | 10 | 096 | 185.32  |
| 869S-334CSR              | 3X3/4       | 7/8   | 1 | 10 | 096 | 185.32  |
| 869S-335CSR              | 3X1         | 1-1/8 | 1 | 10 | 096 | 185.32  |
| 869S-336CSR <sup>1</sup> | 3X1-1/4     | 2-1/4 | 1 | 10 | 096 | 185.32  |
| 869S-337CSR <sup>1</sup> | 3X1-1/2     | 2-1/4 | 1 | 10 | 096 | 185.32  |
| 869S-338CSR              | 3X2         | 2-1/4 | 1 | 10 | 096 | 185.32  |
| 869S-415CSR <sup>1</sup> | 4X1/2       | 1-1/8 | 1 | 10 | 096 | 232.04  |
| 869S-416CSR <sup>1</sup> | 4X3/4       | 1-1/8 | 1 | 10 | 096 | 232.04  |
| 869S-417CSR              | 4X1         | 1-1/8 | 1 | 8  | 096 | 232.04  |
| 869S-418CSR <sup>1</sup> | 4X1-1/4     | 1-3/4 | 1 | 8  | 096 | 232.04  |
| 869S-419CSR              | 4X1-1/2     | 1-3/4 | 1 | 8  | 096 | 232.04  |
| 869S-420CSR              | 4X2         | 2-1/4 | 1 | 8  | 096 | 232.04  |
| 869S-421CSR <sup>1</sup> | 4X2-1/2     | 3     | 1 | 4  | 096 | 249.27  |
| 869S-422CSR              | 4X3         | 3     | 4 | 0  | 096 | 267.19  |
| 869S-523CSR <sup>1</sup> | 6X1/2       | 1-1/8 | 1 | 4  | 096 | 390.81  |
| 869S-524CSR <sup>1</sup> | 6X3/4       | 1-1/8 | 1 | 4  | 096 | 390.81  |
| 869S-525CSR              | 6X1         | 1-1/8 | 1 | 4  | 096 | 390.81  |
| 869S-526CSR <sup>1</sup> | 6X1-1/4     | 2-1/4 | 1 | 4  | 096 | 390.81  |
| 869S-527CSR <sup>1</sup> | 6X1-1/2     | 2-1/4 | 1 | 4  | 096 | 390.81  |
| 869S-528CSR              | 6X2         | 2-1/4 | 1 | 4  | 096 | 390.81  |
| 869S-529CSR <sup>1</sup> | 6X2-1/2     | 3     | 1 | 4  | 096 | 399.59  |
| 869S-530CSR              | 6X3         | 3     | 1 | 4  | 096 | 417.25  |
| 869S-532CSR              | 6X4         | 4     | 1 | 4  | 096 | 428.89  |
| 869S-573CSR <sup>1</sup> | 8X1/2       | 4     | 1 | 0  | 096 | 657.78  |
| 869S-574CSR <sup>1</sup> | 8X3/4       | 4     | 1 | 0  | 096 | 657.78  |
| 869S-575CSR <sup>1</sup> | 8X1         | 4     | 1 | 0  | 096 | 657.78  |
| 869S-576CSR <sup>1</sup> | 8X1-1/4     | 4     | 1 | 0  | 096 | 657.78  |
| 869S-577CSR <sup>1</sup> | 8X1-1/2     | 4     | 1 | 0  | 096 | 657.78  |
| 869S-578CSR <sup>1</sup> | 8X2         | 4     | 1 | 0  | 096 | 657.78  |
| 869S-579CSR <sup>1</sup> | 8X2-1/2     | 4     | 1 | 0  | 096 | 723.51  |
| 869S-580CSR <sup>1</sup> | 8X3         | 4     | 1 | 0  | 096 | 759.59  |
| 869S-582CSR              | 8X4         | 4     | 1 | 0  | 096 | 805.23  |
| 869S-585CSR              | 8X6         | 6     | 1 | 0  | 096 | 845.62  |
| 869S-624CSR              | 10X4        | 4     | 1 | 0  | 096 | 958.23  |
| 869S-626CSR              | 10X6        | 6     | 1 | 0  | 096 | 1101.87 |
| 869S-664CSR              | 12X4        | 4     | 1 | 0  | 096 | 1201.17 |
| 869S-666CSR              | 12X6        | 6     | 1 | 0  | 096 | 1393.20 |

<sup>1</sup> Outlet-sized with Bushing

## Hot-Tap Saddles

| Part Number | Size | Std Pk | Mstr Ctn | Prod Code | MSRP |
|-------------|------|--------|----------|-----------|------|
|-------------|------|--------|----------|-----------|------|



**Hot-Tap Saddle CPVC Gray**

**EPDM Saddle x Socket (Spigot) Zinc Plated Bolts**

2"- 4" 235, 6" 200, 8" 150 psi @ 73°F (23°C)

|          |                 |   |   |     |        |
|----------|-----------------|---|---|-----|--------|
| HT2-248C | 2X3/4 (1)       | 1 | 5 | 050 | 99.32  |
| HT2-251C | 2X1-1/2 (2)     | 1 | 5 | 050 | 205.00 |
| HT2-288C | 2-1/2X3/4 (1)   | 1 | 5 | 050 | 106.01 |
| HT2-291C | 2-1/2X1-1/2 (2) | 1 | 5 | 050 | 211.84 |
| HT2-334C | 3X3/4 (1)       | 1 | 5 | 050 | 121.46 |
| HT2-337C | 3X1-1/2 (2)     | 1 | 5 | 050 | 233.63 |
| HT2-416C | 4X3/4 (1)       | 1 | 5 | 050 | 140.34 |
| HT2-419C | 4X1-1/2 (2)     | 1 | 0 | 050 | 247.02 |
| HT2-524C | 6X3/4 (1)       | 1 | 5 | 050 | 157.82 |
| HT2-527C | 6X1-1/2 (2)     | 1 | 0 | 050 | 262.97 |
| HT2-574C | 8X3/4 (1)       | 1 | 5 | 050 | 145.35 |
| HT2-577C | 8X1-1/2 (2)     | 1 | 0 | 050 | 271.54 |

**Not intended to convey or dispense water for human consumption through drinking or cooking**

**Hot-Tap Saddle CPVC Gray**

**EPDM Saddle x Socket (Spigot) SS316 Bolts**

2"- 4" 235, 6" 200, 8" 150 psi @ 73°F (23°C)

|           |                 |   |   |     |        |
|-----------|-----------------|---|---|-----|--------|
| HT2S-248C | 2X3/4 (1)       | 1 | 5 | 050 | 154.38 |
| HT2S-251C | 2X1-1/2 (2)     | 1 | 5 | 050 | 319.07 |
| HT2S-288C | 2-1/2X3/4 (1)   | 1 | 5 | 050 | 165.02 |
| HT2S-291C | 2-1/2X1-1/2 (2) | 1 | 5 | 050 | 329.87 |
| HT2S-334C | 3X3/4 (1)       | 1 | 5 | 050 | 189.22 |
| HT2S-337C | 3X1-1/2 (2)     | 1 | 5 | 050 | 363.66 |
| HT2S-416C | 4X3/4 (1)       | 1 | 5 | 050 | 218.55 |
| HT2S-419C | 4X1-1/2 (2)     | 1 | 0 | 050 | 384.61 |
| HT2S-524C | 6X3/4 (1)       | 1 | 5 | 050 | 245.31 |
| HT2S-527C | 6X1-1/2 (2)     | 1 | 0 | 050 | 409.29 |
| HT2S-574C | 8X3/4 (1)       | 1 | 0 | 050 | 265.21 |
| HT2S-577C | 8X1-1/2 (2)     | 1 | 0 | 050 | 442.57 |

**Not intended to convey or dispense water for human consumption through drinking or cooking**