

Schedule 80 CPVC Product  
**Clamp-On Saddles & Hot-Tap Saddles**



**Clamp-On Saddles**

Part Number	Size	Hole Saw Dia	Std Pk	Mstr Ctn	Prod Code	MSRP
-------------	------	--------------	--------	----------	-----------	------

**Clamp-On Saddle x SR Thread Double Outlet, CPVC Gray**

**with EPDM O-ring Seal & SS Hardware**



2" - 4" 235, 6" 200, 8"-12" 150 psi @ 73°F (23°C)

869S-247CSR	2X1/2	3/4	1	10	096	133.49
869S-248CSR	2X3/4	7/8	1	10	096	133.49
869S-249CSR	2X1	1-1/8	1	10	096	133.49
869S-250CSR	2X1-1/4	1-1/2	1	10	096	133.49
869S-251CSR	2X1-1/2	1-1/2	1	10	096	133.49
869S-291CSR	2-1/2X1-1/2	1-3/4	1	10	096	176.05
869S-333CSR <sup>1</sup>	3X1/2	7/8	1	10	096	176.05
869S-334CSR	3X3/4	7/8	1	10	096	176.05
869S-335CSR	3X1	1-1/8	1	10	096	176.05
869S-336CSR <sup>1</sup>	3X1-1/4	2-1/4	1	10	096	176.05
869S-337CSR <sup>1</sup>	3X1-1/2	2-1/4	1	10	096	176.05
869S-338CSR	3X2	2-1/4	1	10	096	176.05
869S-415CSR <sup>1</sup>	4X1/2	1-1/8	1	10	096	220.44
869S-416CSR <sup>1</sup>	4X3/4	1-1/8	1	10	096	220.44
869S-417CSR <sup>1</sup>	4X1	1-1/8	1	8	096	220.44
869S-418CSR <sup>1</sup>	4X1-1/4	1-3/4	1	8	096	220.44
869S-419CSR	4X1-1/2	1-3/4	1	8	096	220.44
869S-420CSR	4X2	2-1/4	1	8	096	220.44
869S-421CSR <sup>1</sup>	4X2-1/2	3	1	4	096	236.81
869S-422CSR	4X3	3	4	0	096	253.83
869S-523CSR <sup>1</sup>	6X1/2	1-1/8	1	4	096	371.27
869S-524CSR <sup>1</sup>	6X3/4	1-1/8	1	4	096	371.27
869S-525CSR	6X1	1-1/8	1	4	096	371.27
869S-526CSR <sup>1</sup>	6X1-1/4	2-1/4	1	4	096	371.27
869S-527CSR <sup>1</sup>	6X1-1/2	2-1/4	1	4	096	371.27
869S-528CSR	6X2	2-1/4	1	4	096	371.27
869S-529CSR <sup>1</sup>	6X2-1/2	3	1	4	096	379.61
869S-530CSR	6X3	3	1	4	096	396.39
869S-532CSR	6X4	4	1	4	096	407.45
869S-573CSR <sup>1</sup>	8X1/2	4	1	0	096	624.89
869S-574CSR <sup>1</sup>	8X3/4	4	1	0	096	624.89
869S-575CSR <sup>1</sup>	8X1	4	1	0	096	624.89
869S-576CSR <sup>1</sup>	8X1-1/4	4	1	0	096	624.89
869S-577CSR <sup>1</sup>	8X1-1/2	4	1	0	096	624.89
869S-578CSR <sup>1</sup>	8X2	4	1	0	096	624.89
869S-579CSR <sup>1</sup>	8X2-1/2	4	1	0	096	687.33
869S-580CSR <sup>1</sup>	8X3	4	1	0	096	721.61
869S-582CSR	8X4	4	1	0	096	764.97
869S-585CSR	8X6	6	1	0	096	803.34
869S-624CSR	10X4	4	1	0	096	910.32
869S-626CSR	10X6	6	1	0	096	1046.78
869S-664CSR	12X4	4	1	0	096	1141.11
869S-666CSR	12X6	6	1	0	096	1323.54

<sup>1</sup> Outlet-sized with Bushing

**Hot-Tap Saddles**

Part Number	Size	Std Pk	Mstr Ctn	Prod Code	MSRP
-------------	------	--------	----------	-----------	------

**Hot-Tap Saddle CPVC Gray**

**EPDM Saddle x Socket (Spigot) Zinc Plated Bolts**



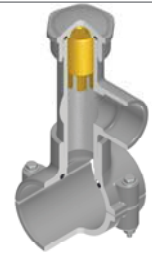
2" - 4" 235, 6" 200, 8" 150 psi @ 73°F (23°C)

HT2-248C	2X3/4 (1)	1	5	050	94.35
HT2-251C	2X1-1/2 (2)	1	5	050	194.75
HT2-288C	2-1/2X3/4 (1)	1	5	050	100.71
HT2-291C	2-1/2X1-1/2 (2)	1	5	050	201.25
HT2-334C	3X3/4 (1)	1	5	050	115.39
HT2-337C	3X1-1/2 (2)	1	5	050	221.95
HT2-416C	4X3/4 (1)	1	5	050	133.32
HT2-419C	4X1-1/2 (2)	1	0	050	234.67
HT2-524C	6X3/4 (1)	1	5	050	149.93
HT2-527C	6X1-1/2 (2)	1	0	050	249.82
HT2-574C	8X3/4 (1)	1	5	050	138.08
HT2-577C	8X1-1/2 (2)	1	0	050	257.96

**Not intended to convey or dispense water for human consumption through drinking or cooking**

**Hot-Tap Saddle CPVC Gray**

**EPDM Saddle x Socket (Spigot) SS316 Bolts**



2" - 4" 235, 6" 200, 8" 150 psi @ 73°F (23°C)

HT2S-248C	2X3/4 (1)	1	5	050	146.66
HT2S-251C	2X1-1/2 (2)	1	5	050	303.12
HT2S-288C	2-1/2X3/4 (1)	1	5	050	156.77
HT2S-291C	2-1/2X1-1/2 (2)	1	5	050	313.38
HT2S-334C	3X3/4 (1)	1	5	050	179.76
HT2S-337C	3X-1/2 (2)	1	5	050	345.48
HT2S-416C	4X3/4 (1)	1	5	050	207.62
HT2S-419C	4X1-1/2 (2)	1	0	050	365.38
HT2S-524C	6X3/4 (1)	1	5	050	233.04
HT2S-527C	6X1-1/2 (2)	1	0	050	388.83
HT2S-574C	8X3/4 (1)	1	0	050	251.95
HT2S-577C	8X1-1/2 (2)	1	0	050	420.44

**Not intended to convey or dispense water for human consumption through drinking or cooking**



Schedule 80 CPVC Product

Hot-Tap Saddles

Hot-Tap Saddles

Part Number	Size	Std Pk	Mstr Ctn	Prod Code	MSRP
-------------	------	--------	----------	-----------	------

Part Number	Size	Std Pk	Mstr Ctn	Prod Code	MSRP
-------------	------	--------	----------	-----------	------

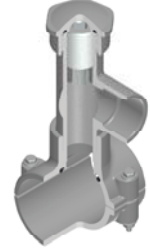
Hot-Tap Saddle CPVC Gray

FKM Saddle x Soc (Spigot) Zinc Plated Bolts



Hot-Tap Saddle CPVC Gray

EPDM with Stainless Steel Cutter & Bolts



2"- 4" 235, 6" 200, 8" 150 psi @ 73°F (23°C)

2"- 4" 235, 6" 200, 8" 150 psi @ 73°F (23°C)

HT3-248C	2X3/4 (1)	1	5	050	102.52
HT3-251C	2X1-1/2 (2)	1	5	050	211.36
HT3-288C	2-1/2X3/4 (1)	1	5	050	109.52
HT3-291C	2-1/2X1-1/2 (2)	1	5	050	218.36
HT3-334C	3X3/4 (1)	1	5	050	125.15
HT3-337C	3X1-1/2 (2)	1	5	050	241.18
HT3-416C	4X3/4 (1)	1	5	050	225.22
HT3-419C	4X1-1/2 (2)	1	0	050	254.87
HT3-524C	6X3/4 (1)	1	5	050	162.79
HT3-527C	6X1-1/2 (2)	1	0	050	270.52
HT3-574C	8X3/4 (1)	1	0	050	175.99
HT3-577C	8X1-1/2 (2)	1	0	050	327.91

HTS2S-248C	2X3/4 (1)	1	5	050	451.24
HTS2S-251C	2X1-1/2 (2)	1	5	050	668.76
HTS2S-288C	2-1/2X3/4 (1)	1	5	050	482.83
HTS2S-291C	2-1/2X1-1/2 (2)	1	5	050	669.83
HTS2S-334C	3X3/4 (1)	1	5	050	460.52
HTS2S-337C	3X1-1/2 (2)	1	5	050	688.51
HTS2S-416C	4X3/4 (1)	1	5	050	490.35
HTS2S-419C	4X1-1/2 (2)	1	0	050	705.63
HTS2S-524C	6X3/4 (1)	1	5	050	571.58
HTS2S-527C	6X1-1/2 (2)	1	0	050	797.65
HTS2S-574C	8X3/4 (1)	1	0	050	792.91
HTS2S-577C	8X1-1/2 (2)	1	0	050	944.41

Lead Free

Not intended to convey or dispense water for human consumption through drinking or cooking

Hot-Tap Saddle CPVC Gray

FKM Saddle x Socket (Spigot) SS316 Bolts



Hot-Tap Saddle CPVC Gray

FKM with Stainless Steel Cutter & Bolts



2"- 4" 235, 6" 200, 8" 150 psi @ 73°F (23°C)

2"- 4" 235, 6" 200, 8" 150 psi @ 73°F (23°C)

HT3S-248C	2X3/4 (1)	1	5	050	159.72
HT3S-251C	2X1-1/2 (2)	1	5	050	329.18
HT3S-288C	2-1/2X3/4 (1)	1	5	050	170.45
HT3S-291C	2-1/2X1-1/2 (2)	1	5	050	339.78
HT3S-334C	3X3/4 (1)	1	5	050	194.58
HT3S-337C	3X1-1/2 (2)	1	5	050	382.32
HT3S-416C	4X3/4 (1)	1	5	050	225.22
HT3S-419C	4X1-1/2 (2)	1	0	050	396.82
HT3S-524C	6X3/4 (1)	1	5	050	253.42
HT3S-527C	6X1-1/2 (2)	1	0	050	421.08
HT3S-574C	8X3/4 (1)	1	0	050	273.94
HT3S-577C	8X1-1/2 (2)	1	5	050	455.23

HTS3S-248C	2X3/4 (1)	1	5	050	458.32
HTS3S-251C	2X1-1/2 (2)	1	5	050	678.94
HTS3S-288C	2-1/2X3/4 (1)	1	5	050	490.51
HTS3S-291C	2-1/2X1-1/2 (2)	1	5	050	681.61
HTS3S-334C	3X3/4 (1)	1	5	050	421.76
HTS3S-337C	3X1-1/2 (2)	1	5	050	700.46
HTS3S-416C	4X3/4 (1)	1	5	050	499.59
HTS3S-419C	4X1-1/2 (2)	1	0	050	723.34
HTS3S-524C	6X3/4 (1)	1	5	050	580.52
HTS3S-527C	6X1-1/2 (2)	1	0	050	815.34
HTS3S-574C	8X3/4 (1)	1	0	050	810.45
HTS3S-577C	8X1-1/2 (2)	1	0	050	952.86

Lead Free

Not intended to convey or dispense water for human consumption through drinking or cooking