



# **CPVC Gray Saddles & Hot-Tap Saddles**



## **PRODUCT**

Contact Spears® for any Information not found.



**Schedule 80 CPVC Product**  
**Glue-On Saddles**

**Glue-On Saddles**

Part Number	Size	Std Pk	Mstr Ctn	Prod Code	MSRP
-------------	------	--------	----------	-----------	------

**Saddle**

**IPS O.D. x Socket Schedule 80**



**Non Pressure Rated**

3963-528C	6X2	1	5	099	101.60
3963-530C	6X3	1	5	099	115.11
3963-532C	6X4	1	8	099	140.87
3963-578C	8X2	1	5	099	154.19
3963-580C	8X3	1	8	099	171.17
3963-582C	8X4	1	5	099	220.04
3963-585C	8X6	1	8	099	251.87
3963-621C	10X2	1	5	099	172.46
3963-623C	10X3	1	8	099	189.92
3963-624C	10X4	1	5	099	233.25
3963-626C	10X6	1	5	099	285.86
3963-628C	10X8	1	5	099	316.19
3963-661C	12X2	1	10	099	189.83
3963-663C	12X3	1	8	099	221.69
3963-664C	12X4	1	8	099	265.41
3963-666C	12X6	1	5	099	307.72
3963-668C	12X8	1	4	099	387.98
3963-670C	12X10	1	0	099	606.79
3963-693C	14X3	1	8	099	238.56
3963-694C	14X4	1	5	099	308.91
3963-696C	14X6	1	10	099	361.02
3963-698C	14X8	1	4	099	429.95
3963-700C	14X10	1	3	099	755.54
3963-702C	14X12	1	4	099	886.02
3963-751C	16X2	1	5	099	229.40
3963-753C	16X3	1	8	099	287.31
3963-754C	16X4	1	10	099	360.59
3963-756C	16X6	1	3	099	488.67
3963-758C	16X8	1	3	099	613.32
3963-760C	16X10	1	0	099	843.06
3963-762C	16X12	1	0	099	1181.94
3963-764C	16X14	1	0	099	1359.12
3963-781C	18X2	1	5	409	279.40
3963-783C	18X3	1	4	099	314.32
3963-784C	18X4	1	5	099	458.04
3963-786C	18X6	1	5	099	627.88
3963-788C	18X8	1	5	099	708.64
3963-790C	18X10	1	0	099	924.35
3963-792C	18X12	1	0	099	1327.83
3963-794C	18X14	1	0	099	1451.74
3963-796C	18X16	1	0	099	1676.17
3963-811C	20X2	1	0	099	294.23
3963-813C	20X3	1	4	099	340.27
3963-814C	20X4	1	4	099	511.06
3963-816C	20X6	1	0	099	678.67
3963-818C	20X8	1	0	099	836.44

Part Number	Size	Std Pk	Mstr Ctn	Prod Code	MSRP
-------------	------	--------	----------	-----------	------

**Saddle (continued)**

**IPS O.D. x Socket Schedule 80**

3963-820C	20X10	1	5	099	1022.60
3963-822C	20X12	1	0	099	1380.85
3963-824C	20X14	1	0	099	1611.34
3963-826C	20X16	1	0	099	1796.00
3963-828C	20X18	1	0	099	1958.46
3963-901C	24X2	1	5	099	322.51
3963-903C	24X3	1	5	099	538.07
3963-904C	24X4	1	5	099	624.77
3963-906C	24X6	1	5	099	888.85
3963-908C	24X8	1	5	099	1044.89
3963-910C	24X10	1	5	099	1293.02
3963-912C	24X12	1	0	099	1465.60
3963-914C	24X14	1	0	099	1711.79
3963-916C	24X16	1	0	099	1894.40
3963-918C	24X18	1	0	099	2098.73
3963-920C	24X20	1	0	099	2499.28

**Stub Saddle**

**IPS O.D. x Socket Schedule 80**



**Non Pressure Rated**

3965-528C	6X2	1	10	099	127.91
3965-530C	6X3	1	3	099	137.41
3965-532C	6X4	1	5	099	170.77
3965-578C	8X2	1	5	099	159.87
3965-580C	8X3	1	4	099	104.91
3965-582C	8X4	1	5	099	237.74
3965-585C	8X6	1	4	099	299.11
3965-621C	10X2	1	6	099	182.77
3965-623C	10X3	1	5	099	205.25
3965-624C	10X4	1	4	099	249.53
3965-626C	10X6	1	4	099	192.79
3965-628C	10X8	1	4	099	321.25
3965-661C	12X2	1	2	099	207.03
3965-663C	12X3	1	2	099	245.09
3965-664C	12X4	1	2	099	285.47
3965-666C	12X6	1	2	099	332.86
3965-668C	12X8	1	2	099	427.22
3965-670C	12X10	1	2	099	755.38
3965-691C	14X2	1	10	099	222.87
3965-693C	14X3	1	0	099	272.77
3965-694C	14X4	1	5	099	323.74
3965-696C	14X6	1	2	099	416.71
3965-700C	14X10	1	0	099	841.66
3965-702C	14X12	1	0	099	1034.05
3965-751C	16X2	1	5	099	257.85
3965-753C	16X3	1	4	099	293.86
3965-754C	16X4	1	3	099	387.11
3965-756C	16X6	1	2	099	518.87
3965-758C	16X8	1	0	099	654.40
3965-760C	16X10	1	0	099	879.54

Schedule 80 CPVC Product  
**Glue-On Saddles & Clamp-On Saddles**



**Glue-On Saddles**

Part Number	Size	Std Pk	Mstr Ctn	Prod Code	MSRP
-------------	------	--------	----------	-----------	------

**Stub Saddle (continued)**

**IPS O.D. x Socket Schedule 80**

3965-762C	16X12	1	0	099	1227.23
3965-764C	16X14	1	0	099	1667.91
3965-781C	18X2	1	2	099	295.18
3965-783C	18X3	1	0	099	328.31
3965-784C	18X4	1	0	099	485.07
3965-786C	18X6	1	2	099	658.25
3965-788C	18X8	1	0	099	725.00
3965-790C	18X10	1	0	099	1055.59
3965-792C	18X12	1	0	099	2056.39
3965-794C	18X14	1	0	099	2640.57
3965-796C	18X16	1	0	099	3382.71
3965-811C	20X2	1	0	099	309.46
3965-813C	20X3	1	2	099	350.56
3965-814C	20X4	1	0	099	530.41
3965-816C	20X6	1	0	099	704.42
3965-818C	20X8	1	0	099	875.42
3965-820C	20X10	1	0	099	1197.95
3965-822C	20X12	1	0	099	2202.77
3965-824C	20X14	1	0	099	2857.00
3965-826C	20X16	1	0	099	3617.61
3965-828C	20X18	1	0	099	4410.34
3965-901C	24X2	1	5	099	341.11
3965-903C	24X3	1	2	099	571.55
3965-904C	24X4	1	5	099	669.59
3965-906C	24X6	1	3	099	944.98
3965-908C	24X8	1	0	099	1106.95
3965-910C	24X10	1	0	099	1387.27
3965-912C	24X12	1	0	099	2378.80
3965-914C	24X14	1	0	099	3007.23
3965-916C	24X16	1	0	099	3688.66
3965-918C	24X18	1	0	099	4498.13
3965-920C	24X20	1	0	099	5798.59

**Clamp-On Saddles**

**Clamp-On Saddle x Socket Single Outlet, CPVC Gray**

**with FKM O-ring Seal & Zinc-Plated Hardware**



2"- 4" 235, 6" 200, 8"-12" 150 psi @ 73°F (23°C)

866V-247C	2X1/2	3/4	1	10	096	59.67
866V-248C	2X3/4	7/8	1	10	096	59.67
866V-249C	2X1	1-1/8	1	10	096	59.67
866V-250C	2X1-1/4	1-1/2	1	10	096	59.67
866V-251C	2X1-1/2	1-1/2	1	10	096	59.67
866V-291C	2-1/2X1-1/2	1-3/4	1	10	096	82.93
866V-333C <sup>1</sup>	3X1/2	7/8	1	10	096	82.93
866V-334C	3X3/4	7/8	1	10	096	82.93
866V-335C	3X1	1-1/8	1	10	096	82.93

Part Number	Size	Hole Saw Dia	Std Pk	Mstr Ctn	Prod Code	MSRP
-------------	------	--------------	--------	----------	-----------	------

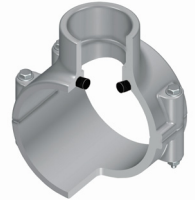
**Clamp-On Saddle x Socket Single Outlet, CPVC Gray (continued) with FKM O-ring Seal & Zinc-Plated Hardware**

866V-336C <sup>1</sup>	3X1-1/4	2-1/4	1	10	096	82.93
866V-337C <sup>1</sup>	3X1-1/2	2-1/4	1	10	096	82.93
866V-338C	3X2	2-1/4	1	10	096	82.93
866V-415C <sup>1</sup>	4X1/2	1-1/8	1	10	096	99.66
866V-416C <sup>1</sup>	4X3/4	1-1/8	1	10	096	99.66
866V-417C	4X1	1-1/8	1	8	096	99.66
866V-418C <sup>1</sup>	4X1-1/4	1-3/4	1	8	096	99.66
866V-419C	4X1-1/2	1-3/4	1	8	096	99.66
866V-420C	4X2	2-1/4	1	8	096	99.66
866V-421C <sup>1</sup>	4X2-1/2	3	1	4	096	107.00
866V-422C	4X3	3	1	4	096	116.66
866V-523C <sup>1</sup>	6X1/2	1-1/8	1	4	096	166.14
866V-524C <sup>1</sup>	6X3/4	1-1/8	1	4	096	166.14
866V-525C	6X1	1-1/8	1	4	096	166.14
866V-526C <sup>1</sup>	6X1-1/4	2-1/4	1	4	096	166.14
866V-527C <sup>1</sup>	6X1-1/2	2-1/4	1	4	096	166.14
866V-528C	6X2	2-1/4	1	4	096	166.14
866V-529C <sup>1</sup>	6X2-1/2	3	1	4	096	179.80
866V-530C	6X3	3	1	4	096	191.40
866V-532C	6X4	4	1	4	096	203.94
866V-573C <sup>1</sup>	8X1/2	4	1	0	096	354.35
866V-574C <sup>1</sup>	8X3/4	4	1	0	096	354.35
866V-575C <sup>1</sup>	8X1	4	1	0	096	354.35
866V-576C <sup>1</sup>	8X1-1/4	4	1	0	096	354.35
866V-577C <sup>1</sup>	8X1-1/2	4	1	0	096	354.35
866V-578C	8X2	4	1	0	096	354.35
866V-579C <sup>1</sup>	8X2-1/2	4	1	0	096	389.84
866V-580C <sup>1</sup>	8X3	4	1	0	096	409.04
866V-582C	8X4	4	1	0	096	445.43
866V-585C	8X6	6	1	0	096	612.42
866V-624C	10X4	4	1	0	096	572.91
866V-626C	10X6	6	1	0	096	658.73
866V-664C	12X4	4	1	0	096	718.13
866V-666C	12X6	6	1	0	096	761.21

<sup>1</sup> Outlet-sized with Bushing

**Clamp-On Saddle x Socket Single Outlet, CPVC Gray**

**with FKM O-ring Seal & SS Hardware**



2"- 4" 235, 6" 200, 8"-12" 150 psi @ 73°F (23°C)

866SV-247C	2X1/2	3/4	1	10	096	91.08
866SV-248C	2X3/4	7/8	1	10	096	91.08
866SV-249C	2X1	1-1/8	1	10	096	91.08
866SV-250C	2X1-1/4	1-1/2	1	10	096	91.08
866SV-251C	2X1-1/2	1-1/2	1	10	096	91.08
866SV-291C	2-1/2X1-1/2	1-3/4	1	10	096	122.01
866SV-333C <sup>1</sup>	3X1/2	7/8	1	10	096	122.01
866SV-334C	3X3/4	7/8	1	10	096	122.01
866SV-335C	3X1	1-1/8	1	10	096	122.01
866SV-336C <sup>1</sup>	3X1-1/4	2-1/4	1	10	096	122.01
866SV-337C <sup>1</sup>	3X1-1/2	2-1/4	1	10	096	122.01



Schedule 80 CPVC Product  
**Clamp-On Saddles**

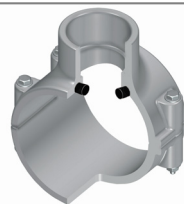
**Clamp-On Saddles**

Part Number	Size	Hole Saw Dia	Std Pk	Mstr Ctn	Prod Code	MSRP
-------------	------	--------------	--------	----------	-----------	------

**Clamp-On Saddle x Socket Single Outlet, CPVC Gray (continued)  
 with FKM O-ring Seal & SS Hardware**

866SV-338C	3X2	2-1/4	1	10	096	122.01
866SV-415C <sup>1</sup>	4X1/2	1-1/8	1	10	096	157.60
866SV-416C <sup>1</sup>	4X3/4	1-1/8	1	10	096	157.60
866SV-417C	4X1	1-1/8	1	8	096	157.60
866SV-418C <sup>1</sup>	4X1-1/4	1-3/4	1	8	096	157.60
866SV-419C	4X1-1/2	1-3/4	1	8	096	157.60
866SV-420C	4X2	2-1/4	1	8	096	157.60
866SV-421C <sup>1</sup>	4X2-1/2	3	1	4	096	166.80
866SV-422C	4X3	3	1	4	096	175.29
866SV-523C <sup>1</sup>	6X1/2	1-1/8	1	4	096	250.93
866SV-524C <sup>1</sup>	6X3/4	1-1/8	1	4	096	250.93
866SV-525C	6X1	1-1/8	1	4	096	250.93
866SV-526C <sup>1</sup>	6X1-1/4	2-1/4	1	4	096	250.93
866SV-527C <sup>1</sup>	6X1-1/2	2-1/4	1	4	096	250.93
866SV-528C	6X2	2-1/4	1	4	096	250.93
866SV-529C <sup>1</sup>	6X2-1/2	3	1	4	096	260.88
866SV-530C	6X3	3	1	4	096	269.94
866SV-532C	6X4	4	1	4	096	286.92
866SV-573C <sup>1</sup>	8X1/2	4	1	0	096	462.99
866SV-574C <sup>1</sup>	8X3/4	4	1	0	096	462.99
866SV-575C <sup>1</sup>	8 X 1	4	1	0	096	462.99
866SV-576C <sup>1</sup>	8X1-1/4	4	1	0	096	462.99
866SV-577C <sup>1</sup>	8X1-1/2	4	1	0	096	462.99
866SV-578C	8 X 2	4	1	0	096	462.99
866SV-579C <sup>1</sup>	8X2-1/2	4	1	0	096	490.06
866SV-580C <sup>1</sup>	8X3	4	1	0	096	534.87
866SV-582C	8X4	4	1	0	096	566.94
866SV-585C	8X6	6	1	0	096	629.22
866SV-624C	10X4	4	1	0	096	748.72
866SV-626C	10X6	6	1	0	096	861.15
866SV-664C	12X4	4	1	0	096	938.49
866SV-666C	12X6	6	1	0	096	1088.77

<sup>1</sup> Outlet-sized with Bushing



**Clamp-On Saddle x Socket Single Outlet,  
 CPVC Gray**

**with EPDM O-ring Seal & Zinc-Plated  
 Hardware**

2"- 4" 235, 6" 200, 8"-12" 150 psi @ 73°F (23°C)

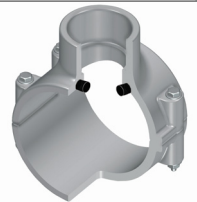
866-247C	2X1/2	3/4	1	10	096	56.71
866-248C	2X3/4	7/8	1	10	096	56.71
866-249C	2X1	1-1/8	1	10	096	56.71
866-250C	2X1-1/4	1-1/2	1	10	096	56.71
866-251C	2X1-1/2	1-1/2	1	10	096	56.71
866-291C	2-1/2X1-1/2	1-3/4	1	10	096	75.97
866-333C <sup>1</sup>	3X1/2	7/8	1	10	096	75.97
866-334C	3X3/4	7/8	1	10	096	75.97
866-335C	3X1	1-1/8	1	10	096	75.97
866-336C <sup>1</sup>	3X1-1/4	2-1/4	1	10	096	75.97

Part Number	Size	Hole Saw Dia	Std Pk	Mstr Ctn	Prod Code	MSRP
-------------	------	--------------	--------	----------	-----------	------

**Clamp-On Saddle x Socket Single Outlet, CPVC Gray (continued)  
 with EPDM O-ring Seal & Zinc-Plated Hardware**

866-337C <sup>1</sup>	3X1-1/2	2-1/4	1	10	096	75.97
866-338C	3X2	2-1/4	1	10	096	75.97
866-415C <sup>1</sup>	4X1/2	1-1/8	1	10	096	92.37
866-416C <sup>1</sup>	4X3/4	1-1/8	1	10	096	92.37
866-417C	4X1	1-1/8	1	8	096	92.37
866-418C <sup>1</sup>	4X1-1/4	1-3/4	1	8	096	92.37
866-419C	4X1-1/2	1-3/4	1	8	096	92.37
866-420C	4X2	2-1/4	1	8	096	92.37
866-421C <sup>1</sup>	4X2-1/2	3	1	4	096	101.45
866-422C	4X3	3	1	4	096	113.08
866-523C <sup>1</sup>	6X1/2	1-1/8	1	4	096	154.15
866-524C <sup>1</sup>	6X3/4	1-1/8	1	4	096	154.15
866-525C	6X1	1-1/8	1	4	096	154.15
866-526C <sup>1</sup>	6X1-1/4	2-1/4	1	4	096	154.15
866-527C <sup>1</sup>	6X1-1/2	2-1/4	1	4	096	154.15
866-528C	6X2	2-1/4	1	4	096	154.15
866-529C <sup>1</sup>	6X2-1/2	3	1	4	096	167.57
866-530C	6X3	3	1	4	096	179.75
866-532C	6X4	4	1	4	096	192.09
866-573C <sup>1</sup>	8X1/2	4	1	0	096	338.96
866-574C <sup>1</sup>	8X3/4	4	1	0	096	338.96
866-575C <sup>1</sup>	8X1	4	1	0	096	338.96
866-576C <sup>1</sup>	8X1-1/4	4	1	0	096	338.96
866-577C <sup>1</sup>	8X1-1/2	4	1	0	096	338.96
866-578C	8X2	4	1	0	096	338.96
866-579C <sup>1</sup>	8X2-1/2	4	1	0	096	372.83
866-580C <sup>1</sup>	8X3	4	1	0	096	391.57
866-582C	8X4	4	1	0	096	415.02
866-585C	8X6	6	1	0	096	460.64
866-624C	10X4	4	1	0	096	548.09
866-626C	10X6	4	1	0	096	630.39
866-664C	12X4	4	1	0	096	687.17
866-666C	12X6	6	1	0	096	797.06

<sup>1</sup> Outlet-sized with Bushing



**Clamp-On Saddle x Socket Single Outlet,  
 CPVC Gray**

**with EPDM O-ring Seal & SS Hardware**

2"- 4" 235, 6" 200, 8"-12" 150 psi @ 73°F (23°C)

866S-247C	2X1/2	3/4	1	10	096	88.28
866S-248C	2X3/4	7/8	1	10	096	88.28
866S-249C	2X1	1-1/8	1	10	096	88.28
866S-250C	2X1-1/4	1-1/2	1	10	096	88.28
866S-251C	2X1-1/2	1-1/2	1	10	096	88.28
866S-291C	2-1/2X1-1/2	1-3/4	1	10	096	117.69
866S-333C <sup>1</sup>	3X1/2	7/8	1	10	096	117.69
866S-334C	3X3/4	7/8	1	10	096	117.69
866S-335C	3X1	1-1/8	1	10	096	117.69
866S-336C <sup>1</sup>	3X1-1/4	2-1/4	1	10	096	117.69
866S-337C <sup>1</sup>	3X1-1/2	2-1/4	1	10	096	117.69
866S-338C	3X2	2-1/4	1	10	096	117.69



Schedule 80 CPVC Product  
**Clamp-On Saddles**



**Clamp-On Saddles**

Part Number	Size	Hole Saw Dia	Std Pk	Mstr Ctn	Prod Code	MSRP
-------------	------	--------------	--------	----------	-----------	------

**Clamp-On Saddle x Socket Single Outlet, CPVC Gray (continued)  
 with EPDM O-ring Seal & SS Hardware**

866S-415C <sup>1</sup>	4X1/2	1-1/8	1	10	096	150.57
866S-416C <sup>1</sup>	4X3/4	1-1/8	1	10	096	150.57
866S-417C	4X1	1-1/8	1	8	096	150.57
866S-418C <sup>1</sup>	4X1-1/4	1-3/4	1	8	096	150.57
866S-419C	4X1-1/2	1-3/4	1	8	096	150.57
866S-420C	4X2	2-1/4	1	8	096	150.57
866S-421C <sup>1</sup>	4X2-1/2	3	1	4	096	156.92
866S-422C	4X3	3	1	4	096	164.98
866S-523C <sup>1</sup>	6X1/2	1-1/8	1	4	096	237.26
866S-524C <sup>1</sup>	6X3/4	1-1/8	1	4	096	237.26
866S-525C	6X1	1-1/8	1	4	096	237.26
866S-526C <sup>1</sup>	6X1-1/4	2-1/4	1	4	096	237.26
866S-527C <sup>1</sup>	6X1-1/2	2-1/4	1	4	096	237.26
866S-528C	6X2	2-1/4	1	4	096	237.26
866S-529C <sup>1</sup>	6X2-1/2	3	1	4	096	251.14
866S-530C	6X3	3	1	4	096	266.37
866S-532C	6X4	4	1	4	096	278.65
866S-573C <sup>1</sup>	8X1/2	4	1	0	096	445.60
866S-574C <sup>1</sup>	8X3/4	4	1	0	096	445.60
866S-575C <sup>1</sup>	8X1	4	1	0	096	445.60
866S-576C <sup>1</sup>	8X1-1/4	4	1	0	096	445.60
866S-577C <sup>1</sup>	8X1-1/2	4	1	0	096	445.60
866S-578C	8 X 2	4	1	0	096	445.60
866S-579C <sup>1</sup>	8X2-1/2	4	1	0	096	490.06
866S-580C <sup>1</sup>	8X3	4	1	0	096	514.60
866S-582C	8X4	4	1	0	096	545.48
866S-585C	8X6	6	1	0	096	605.31
866S-624C	10X4	4	1	0	096	720.28
866S-626C	10X6	6	1	0	096	828.39
866S-664C	12X4	4	1	0	096	902.82
866S-666C	12X6	6	1	0	096	1047.32

<sup>1</sup> Outlet-sized with Bushing



**Clamp-On Saddle x SR Thread Single Outlet, CPVC Gray**

**with FKM O-ring Seal & Zinc-Plated Hardware**

2"- 4" 235, 6" 200, 8"-12" 150 psi @ 73°F (23°C)

867V-247CSR	2X1/2	3/4	1	10	096	68.33
867V-248CSR	2X3/4	7/8	1	10	096	68.33
867V-249CSR	2X1	1-1/8	1	10	096	68.33
867V-250CSR	2X1-1/4	1-1/2	1	10	096	68.33
867V-251CSR	2X1-1/2	1-1/2	1	10	096	68.33
867V-291CSR	2-1/2X1-1/2	1-3/4	1	10	096	95.34
867V-333CSR <sup>1</sup>	3X1/2	7/8	1	10	096	95.34
867V-334CSR	3X3/4	7/8	1	10	096	95.34
867V-335CSR	3X1	1-1/8	1	10	096	95.34
867V-336CSR <sup>1</sup>	3X1-1/4	2-1/4	1	10	096	95.34
867V-337CSR <sup>1</sup>	3X1-1/2	2-1/4	1	10	096	95.34

Made in the U.S.A.

Part Number	Size	Hole Saw Dia	Std Pk	Mstr Ctn	Prod Code	MSRP
-------------	------	--------------	--------	----------	-----------	------

**Clamp-On Saddle x SR Thread Single Outlet, CPVC Gray**

(continued)

**with FKM O-ring Seal & Zinc-Plated Hardware**

867V-338CSR	3X2	2-1/4	1	10	096	95.34
867V-415CSR <sup>1</sup>	4X1/2	1-1/8	1	10	096	118.89
867V-416CSR <sup>1</sup>	4X3/4	1-1/8	1	10	096	118.89
867V-417CSR	4X1	1-1/8	1	8	096	118.89
867V-418CSR <sup>1</sup>	4X1-1/4	1-3/4	1	8	096	118.89
867V-419CSR	4X1-1/2	1-3/4	1	8	096	118.89
867V-420CSR	4X2	2-1/4	1	8	096	118.89
867V-421CSR <sup>1</sup>	4X2-1/2	3	1	4	096	128.24
867V-422CSR	4X3	3	1	4	096	141.18
867V-523CSR <sup>1</sup>	6X1/2	1-1/8	1	4	096	198.65
867V-524CSR <sup>1</sup>	6X3/4	1-1/8	1	4	096	198.65
867V-525CSR	6X1	1-1/8	1	4	096	198.65
867V-526CSR <sup>1</sup>	6X1-1/4	2-1/4	1	4	096	198.65
867V-527CSR <sup>1</sup>	6X1-1/2	2-1/4	1	4	096	198.65
867V-528CSR	6X2	2-1/4	1	4	096	198.65
867V-529CSR <sup>1</sup>	6X2-1/2	3	1	4	096	212.72
867V-530CSR	6X3	3	1	4	096	220.38
867V-532CSR	6X4	4	1	4	096	236.05
867V-573CSR <sup>1</sup>	8X1/2	4	1	0	096	396.00
867V-574CSR <sup>1</sup>	8X3/4	4	1	0	096	396.00
867V-575CSR <sup>1</sup>	8X1	4	1	0	096	396.00
867V-576CSR <sup>1</sup>	8X1-1/4	4	1	0	096	396.00
867V-577CSR <sup>1</sup>	8X1-1/2	4	1	0	096	396.00
867V-578CSR <sup>1</sup>	8X2	4	1	0	096	396.00
867V-579CSR <sup>1</sup>	8X2-1/2	4	1	0	096	435.57
867V-580CSR <sup>1</sup>	8X3	4	1	0	096	457.39
867V-582CSR	8X4	4	1	0	096	486.64
867V-585CSR	8X6	6	1	0	096	501.77
867V-624CSR	10X4	4	1	0	096	578.97
867V-626CSR	10X6	6	1	0	096	665.78
867V-664CSR	12X4	4	1	0	096	724.27
867V-666CSR	12X6	6	1	0	096	841.97

<sup>1</sup> Outlet-sized with Bushing



**Clamp-On Saddle x SR Thread Single Outlet, CPVC Gray**

**with FKM O-ring Seal & SS Hardware**

2"- 4" 235, 6" 200, 8"-12" 150 psi @ 73°F (23°C)

867SV-245CSR <sup>1</sup>	2X1/4	1-1/8	1	10	096	118.82
867SV-247CSR	2X1/2	3/4	1	10	096	113.39
867SV-248CSR	2X3/4	7/8	1	10	096	113.39
867SV-249CSR	2X1	1-1/8	1	10	096	113.39
867SV-250CSR	2X1-1/4	1-1/2	1	10	096	113.39
867SV-251CSR	2X1-1/2	1-1/2	1	10	096	113.39
867SV-291CSR	2-1/2X1-1/2	1-3/4	1	10	096	152.33
867SV-331CSR <sup>1</sup>	3X1/4	1-1/8	1	10	096	161.03
867SV-333CSR <sup>1</sup>	3X1/2	7/8	1	10	096	152.33
867SV-334CSR	3X3/4	7/8	1	10	096	152.33
867SV-335CSR	3X1	1-1/8	1	10	096	152.33
867SV-336CSR <sup>1</sup>	3X1-1/4	2-1/4	1	10	096	152.33

Suitable for Oil-Free air handling to 25 psi, not for distribution of compressed air or gas  
 See MSRP-1 Sheet or Check Spears® On-line Catalog @ [www.spearsmfg.com](http://www.spearsmfg.com) for Pricing



Schedule 80 CPVC Product  
**Clamp-On Saddles**

**Clamp-On Saddles**

Part Number	Size	Hole Saw Dia	Std Pk	Mstr Ctn	Prod Code	MSRP
-------------	------	--------------	--------	----------	-----------	------

**Clamp-On Saddle x SR Thread Single Outlet, CPVC Gray**

(continued)

**with FKM O-ring Seal & SS Hardware**

867SV-337CSR <sup>1</sup>	3X1-1/2	2-1/4	1	10	096	152.33
867SV-338CSR	3X2	2-1/4	1	10	096	152.33
867SV-413CSR <sup>1</sup>	4X1/4	1-1/8	1	8	096	192.45
867SV-415CSR <sup>1</sup>	4X1/2	1-1/8	1	10	096	192.45
867SV-416CSR <sup>1</sup>	4X3/4	1-1/8	1	10	096	192.45
867SV-417CSR	4X1	1-1/8	1	8	096	192.45
867SV-418CSR <sup>1</sup>	4X1-1/4	1-3/4	1	8	096	192.45
867SV-419CSR	4X1-1/2	1-3/4	1	8	096	192.45
867SV-420CSR	4X2	2-1/4	1	8	096	192.45
867SV-421CSR <sup>1</sup>	4X2-1/2	3	1	4	096	200.22
867SV-422CSR	4X3	3	1	4	096	211.07
867SV-521CSR <sup>1</sup>	6X1/4	1-1/8	1	4	096	333.14
867SV-523CSR <sup>1</sup>	6X1/2	1-1/8	1	4	096	320.76
867SV-524CSR <sup>1</sup>	6X3/4	1-1/8	1	4	096	320.76
867SV-525CSR	6X1	1-1/8	1	4	096	320.76
867SV-526CSR <sup>1</sup>	6X1-1/4	2-1/4	1	4	096	320.76
867SV-527CSR <sup>1</sup>	6X1-1/2	2-1/4	1	4	096	320.76
867SV-528CSR	6X2	2-1/4	1	4	096	320.76
867SV-529CSR <sup>1</sup>	6X2-1/2	3	1	4	096	336.03
867SV-530CSR	6X3	3	1	4	096	349.57
867SV-532CSR	6X4	4	1	4	096	374.20
867SV-571CSR <sup>1</sup>	8X1/4	4	1	0	096	566.76
867SV-573CSR <sup>1</sup>	8X1/2	4	1	0	096	552.56
867SV-574CSR <sup>1</sup>	8X3/4	4	1	0	096	552.56
867SV-575CSR <sup>1</sup>	8X1	4	1	0	096	552.56
867SV-576CSR <sup>1</sup>	8X1-1/4	4	1	0	096	552.56
867SV-577CSR <sup>1</sup>	8X1-1/2	4	1	0	096	552.56
867SV-578CSR <sup>1</sup>	8X2	4	1	0	096	552.56
867SV-579CSR <sup>1</sup>	8X2-1/2	4	1	0	096	607.85
867SV-580CSR <sup>1</sup>	8X3	4	1	0	096	638.27
867SV-582CSR	8X4	4	1	0	096	676.64
867SV-585CSR	8X6	6	1	0	096	712.33
867SV-624CSR	10X4	4	1	0	096	805.22
867SV-626CSR	10X6	6	1	0	096	925.98
867SV-664CSR	12X4	4	1	0	096	1009.28
867SV-666CSR	12X6	6	1	0	096	1170.78

<sup>1</sup> Outlet-sized with Bushing



**Clamp-On Saddle x SR Thread Single Outlet, CPVC Gray**

**with EPDM O-ring Seal & Zinc-Plated Hardware**

2"- 4" 235, 6" 200, 8"-12" 150 psi @ 73°F (23°C)

867-247CSR	2X1/2	3/4	1	10	096	59.32
867-248CSR	2X3/4	7/8	1	10	096	59.32
867-249CSR	2X1	1-1/8	1	10	096	59.32
867-250CSR	2X1-1/4	1-1/2	1	10	096	59.32
867-251CSR	2X1-1/2	1-1/2	1	10	096	59.32

Part Number	Size	Hole Saw Dia	Std Pk	Mstr Ctn	Prod Code	MSRP
-------------	------	--------------	--------	----------	-----------	------

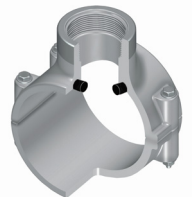
**Clamp-On Saddle x SR Thread Single Outlet, CPVC Gray**

(continued)

**with EPDM O-ring Seal & Zinc-Plated Hardware**

867-291CSR	2-1/2X1-1/2	1-3/4	1	10	096	81.06
867-333CSR <sup>1</sup>	3X1/2	7/8	1	10	096	81.06
867-334CSR	3X3/4	7/8	1	10	096	81.06
867-335CSR	3X1	1-1/8	1	10	096	81.06
867-336CSR <sup>1</sup>	3X1-1/4	2-1/4	1	10	096	81.06
867-337CSR <sup>1</sup>	3X1-1/2	2-1/4	1	10	096	81.06
867-338CSR	3X2	2-1/4	1	10	096	81.06
867-415CSR <sup>1</sup>	4X1/2	1-1/8	1	10	096	102.09
867-416CSR <sup>1</sup>	4X3/4	1-1/8	1	10	096	102.09
867-417CSR	4X1	1-1/8	1	8	096	102.09
867-418CSR <sup>1</sup>	4X1-1/4	1-3/4	1	8	096	102.09
867-419CSR	4X1-1/2	1-3/4	1	8	096	102.09
867-420CSR	4X2	2-1/4	1	8	096	102.09
867-421CSR <sup>1</sup>	4X2-1/2	3	1	4	096	113.28
867-422CSR	4X3	3	1	4	096	122.27
867-523CSR <sup>1</sup>	6X1/2	1-1/8	1	4	096	170.13
867-524CSR <sup>1</sup>	6X3/4	1-1/8	1	4	096	170.13
867-525CSR	6X1	1-1/8	1	4	096	170.13
867-526CSR <sup>1</sup>	6X1-1/4	2-1/4	1	4	096	170.13
867-527CSR <sup>1</sup>	6X1-1/2	2-1/4	1	4	096	170.13
867-528CSR	6X2	2-1/4	1	4	096	170.13
867-529CSR <sup>1</sup>	6X2-1/2	3	1	4	096	180.02
867-530CSR	6X3	3	1	4	096	190.36
867-532CSR	6X4	4	1	4	096	207.01
867-573CSR <sup>1</sup>	8X1/2	4	1	0	096	359.52
867-574CSR	8X3/4	4	1	0	096	359.52
867-575CSR <sup>1</sup>	8X1	4	1	0	096	359.52
867-576CSR <sup>1</sup>	8X1-1/4	4	1	0	096	359.52
867-577CSR <sup>1</sup>	8X1-1/2	4	1	0	096	359.52
867-578CSR <sup>1</sup>	8X2	4	1	0	096	359.52
867-579CSR <sup>1</sup>	8X2-1/2	4	1	0	096	395.45
867-580CSR <sup>1</sup>	8X3	4	1	0	096	419.18
867-582CSR	8X4	4	1	0	096	444.43
867-585CSR	8X6	6	1	0	096	462.08
867-624CSR	10X4	4	1	0	096	528.91
867-626CSR	10X6	6	1	0	096	608.20
867-664CSR	12X4	4	1	0	096	662.98
867-666CSR	12X6	6	1	0	096	769.00

<sup>1</sup> Outlet-sized with Bushing



**Clamp-On Saddle x SR Thread Single Outlet, CPVC Gray**

**with EPDM O-ring Seal & SS Hardware**

2"- 4" 235, 6" 200, 8"-12" 150 psi @ 73°F (23°C)

867S-245CSR <sup>1</sup>	2X1/4	1-1/8	1	10	096	104.59
867S-247CSR	2X1/2	3/4	1	10	096	101.84
867S-248CSR	2X3/4	7/8	1	10	096	101.84
867S-249CSR	2X1	1-1/8	1	10	096	101.84
867S-250CSR	2X1-1/4	1-1/2	1	10	096	101.84
867S-251CSR	2X1-1/2	1-1/2	1	10	096	101.84

**Schedule 80 CPVC Product**  
**Clamp-On Saddles**



**Clamp-On Saddles**

Part Number	Size	Hole Saw Dia	Std Pk	Mstr Ctn	Prod Code	MSRP
-------------	------	--------------	--------	----------	-----------	------

**Clamp-On Saddle x SR Thread Single Outlet, CPVC Gray**

(continued)

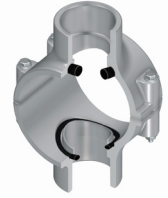
**with EPDM O-ring Seal & SS Hardware**

867S-291CSR	2-1/2X1-1/2	1-3/4	1	10	096	136.33
867S-331CSR <sup>1</sup>	3X1/4	1-1/8	1	10	096	140.65
867S-333CSR <sup>1</sup>	3X1/2	7/8	1	10	096	136.33
867S-334CSR	3X3/4	7/8	1	10	096	136.33
867S-335CSR	3X1	1-1/8	1	10	096	136.33
867S-336CSR <sup>1</sup>	3X1-1/4	2-1/4	1	10	096	136.33
867S-337CSR <sup>1</sup>	3X1-1/2	2-1/4	1	10	096	136.33
867S-338CSR	3X2	2-1/4	1	10	096	136.33
867S-413CSR <sup>1</sup>	4X1/4	1-1/8	1	8	096	176.80
867S-415CSR <sup>1</sup>	4X1/2	1-1/8	1	10	096	171.57
867S-416CSR <sup>1</sup>	4X3/4	1-1/8	1	10	096	171.57
867S-417CSR	4X1	1-1/8	1	8	096	171.57
867S-418CSR <sup>1</sup>	4X1-1/4	1-3/4	1	8	096	171.57
867S-419CSR	4X1-1/2	1-3/4	1	8	096	171.57
867S-420CSR	4X2	2-1/4	1	8	096	171.57
867S-421CSR <sup>1</sup>	4X2-1/2	3	1	4	096	181.93
867S-422CSR	4X3	3	1	4	096	190.47
867S-521CSR <sup>1</sup>	6X1/4	1-1/8	1	8	096	296.61
867S-523CSR <sup>1</sup>	6X1/2	1-1/8	1	4	096	285.95
867S-524CSR <sup>1</sup>	6X3/4	1-1/8	1	4	096	285.95
867S-525CSR	6X1	1-1/8	1	4	096	285.95
867S-526CSR <sup>1</sup>	6X1-1/4	2-1/4	1	4	096	285.95
867S-527CSR <sup>1</sup>	6X1-1/2	2-1/4	1	4	096	285.95
867S-528CSR	6X2	2-1/4	1	4	096	285.95
867S-529CSR <sup>1</sup>	6X2-1/2	3	1	4	096	297.38
867S-530CSR	6X3	3	1	4	096	307.35
867S-532CSR	6X4	4	1	4	096	320.89
867S-571CSR <sup>1</sup>	8X1/4	4	1	0	096	526.71
867S-573CSR	8X1/2	4	1	0	096	508.00
867S-574CSR <sup>1</sup>	8X3/4	4	1	0	096	508.00
867S-575CSR <sup>1</sup>	8X1	4	1	0	096	508.00
867S-576CSR <sup>1</sup>	8X1-1/4	4	1	0	096	508.00
867S-577CSR <sup>1</sup>	8X1-1/2	4	1	0	096	508.00
867S-578CSR <sup>1</sup>	8X2	4	1	0	096	508.00
867S-579CSR <sup>1</sup>	8X2-1/2	4	1	0	096	558.78
867S-580CSR <sup>1</sup>	8X3	4	1	0	096	586.67
867S-582CSR	8X4	4	1	0	096	621.86
867S-585CSR	8X6	6	1	0	096	652.31
867S-624CSR	10X4	4	1	0	096	740.02
867S-626CSR	10X6	6	1	0	096	851.03
867S-664CSR	12X4	4	1	0	096	927.62
867S-666CSR	12X6	6	1	0	096	1076.07

<sup>1</sup> Outlet-sized with Bushing

Part Number	Size	Hole Saw Dia	Std Pk	Mstr Ctn	Prod Code	MSRP
-------------	------	--------------	--------	----------	-----------	------

**Clamp-On Saddle x Socket Double Outlet, CPVC Gray**



**with FKM O-ring Seal & Zinc-Plated Hardware**

2"- 4" 235, 6" 200, 8"-12" 150 psi @ 73°F (23°C)

868V-247C	2X1/2	3/4	1	10	096	81.18
868V-248C	2X3/4	7/8	1	10	096	81.18
868V-249C	2X1	1-1/8	1	10	096	81.18
868V-250C	2X1-1/4	1-1/2	1	10	096	81.18
868V-251C	2X1-1/2	1-1/2	1	10	096	81.18
868V-291C	2-1/2X1-1/2	1-3/4	1	10	096	99.27
868V-333C <sup>1</sup>	3X1/2	7/8	1	10	096	99.27
868V-334C	3X3/4	7/8	1	10	096	99.27
868V-335C	3X1	1-1/8	1	10	096	99.27
868V-336C <sup>1</sup>	3X1-1/4	2-1/4	1	10	096	99.27
868V-337C <sup>1</sup>	3X1-1/2	2-1/4	1	10	096	99.27
868V-338C <sup>1</sup>	3X2	2-1/4	1	10	096	99.27
868V-415C <sup>1</sup>	4X1/2	1-1/8	1	10	096	133.65
868V-416C <sup>1</sup>	4X3/4	1-1/8	1	10	096	133.65
868V-417C	4X1	1-1/8	1	8	096	133.65
868V-418C <sup>1</sup>	4X1-1/4	1-3/4	1	8	096	133.65
868V-419C	4X1-1/2	1-3/4	1	8	096	133.65
868V-420C	4X2	2-1/4	1	8	096	133.65
868V-421C <sup>1</sup>	4X2-1/2	3	1	4	096	139.64
868V-422C	4X3	3	4	0	096	152.40
868V-523C <sup>1</sup>	6X1/2	1-1/8	1	4	096	216.23
868V-524C <sup>1</sup>	6X3/4	1-1/8	1	4	096	216.23
868V-525C	6X1	1-1/8	1	4	096	216.23
868V-526C <sup>1</sup>	6X1-1/4	2-1/4	1	4	096	216.23
868V-527C <sup>1</sup>	6X1-1/2	2-1/4	1	4	096	216.23
868V-528C	6X2	2-1/4	1	4	096	216.23
868V-529C	6X2-1/2	3	1	4	096	250.44
868V-530C	6X3	3	1	4	096	264.05
868V-532C	6X4	4	1	4	096	275.48
868V-573C <sup>1</sup>	8X1/2	4	1	0	096	418.64
868V-574C <sup>1</sup>	8X3/4	4	1	0	096	418.64
868V-575C <sup>1</sup>	8X1	4	1	0	096	418.64
868V-576C <sup>1</sup>	8X1-1/4	4	1	0	096	418.64
868V-577C <sup>1</sup>	8X1-1/2	4	1	0	096	418.64
868V-578C <sup>1</sup>	8X2	4	1	0	096	418.64
868V-579C <sup>1</sup>	8X2-1/2	4	1	0	096	460.46
868V-580C <sup>1</sup>	8X3	4	1	0	096	483.45
868V-582C	8X4	4	1	0	096	512.42
868V-585C	8X6	6	1	0	096	568.83
868V-624C	10X4	4	1	0	096	676.83
868V-626C	10X6	6	1	0	096	778.60
868V-664C	12X4	4	1	0	096	848.49
868V-666C	12X6	6	1	0	096	984.12

<sup>1</sup> Outlet-sized with Bushing





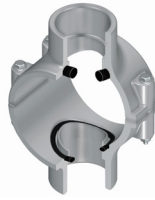
Schedule 80 CPVC Product  
**Clamp-On Saddles**

**Clamp-On Saddles**

Part Number	Size	Hole Saw Dia	Std Pk	Mstr Ctn	Prod Code	MSRP
-------------	------	--------------	--------	----------	-----------	------

Clamp-On Saddle x Socket Double Outlet,  
 CPVC Gray

with FKM O-ring Seal & SS Hardware



2"- 4" 235, 6" 200, 8"-12" 150 psi @ 73°F (23°C)

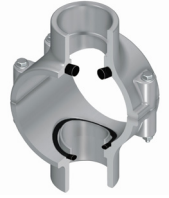
868SV-247C	2X1/2	3/4	1	10	096	123.87
868SV-248C	2X3/4	7/8	1	10	096	123.87
868SV-249C	2X1	1-1/8	1	10	096	123.87
868SV-250C	2X1-1/4	1-1/2	1	10	096	123.87
868SV-251C	2X1-1/2	1-1/2	1	10	096	123.87
868SV-291C	2-1/2X1-1/2	1-3/4	1	10	096	164.80
868SV-333C <sup>1</sup>	3X1/2	7/8	1	10	096	164.80
868SV-334C	3X3/4	7/8	1	10	096	164.80
868SV-335C	3X1	1-1/8	1	10	096	164.80
868SV-336C <sup>1</sup>	3X1-1/4	2-1/4	1	10	096	164.80
868SV-337C <sup>1</sup>	3X1-1/2	2-1/4	1	10	096	164.80
868SV-338C	3X2	2-1/4	1	10	096	164.80
868SV-415C <sup>1</sup>	4X1/2	1-1/8	1	10	096	209.43
868SV-416C <sup>1</sup>	4X3/4	1-1/8	1	10	096	209.43
868SV-417C	4X1	1-1/8	1	8	096	209.43
868SV-418C <sup>1</sup>	4X1-1/4	1-3/4	1	8	096	209.43
868SV-419C	4X1-1/2	1-3/4	1	8	096	209.43
868SV-420C	4X2	2-1/4	1	8	096	209.43
868SV-421C <sup>1</sup>	4X2-1/2	3	1	4	096	217.91
868SV-422C	4X3	3	4	0	096	232.14
868SV-523C <sup>1</sup>	6X1/2	1-1/8	1	4	096	348.36
868SV-524C <sup>1</sup>	6X3/4	1-1/8	1	4	096	348.36
868SV-525C	6X1	1-1/8	1	4	096	348.36
868SV-526C <sup>1</sup>	6X1-1/4	2-1/4	1	4	096	348.36
868SV-527C <sup>1</sup>	6X1-1/2	2-1/4	1	4	096	348.36
868SV-528C	6X2	2-1/4	1	4	096	348.36
868SV-529C <sup>1</sup>	6X2-1/2	3	1	4	096	359.07
868SV-530C	6X3	3	1	4	096	375.65
868SV-532C	6X4	4	1	4	096	384.59
868SV-573C <sup>1</sup>	8X1/2	4	1	0	096	588.01
868SV-574C <sup>1</sup>	8X3/4	4	1	0	096	588.01
868SV-575C <sup>1</sup>	8X1	4	1	0	096	588.01
868SV-576C <sup>1</sup>	8X1-1/4	4	1	0	096	588.01
868SV-577C <sup>1</sup>	8X1-1/2	4	1	0	096	588.01
868SV-578C <sup>1</sup>	8X2	4	1	0	096	588.01
868SV-579C <sup>1</sup>	8X2-1/2	4	1	0	096	646.59
868SV-580C <sup>1</sup>	8X3	4	1	0	096	679.09
868SV-582C	8X4	4	1	0	096	719.78
868SV-585C	8X6	6	1	0	096	799.06
868SV-624C	10X4	4	1	0	096	950.89
868SV-626C	10X6	6	1	0	096	1093.65
868SV-664C	12X4	4	1	0	096	1191.80
868SV-666C	12X6	6	1	0	096	1382.64

<sup>1</sup> Outlet-sized with Bushing

Part Number	Size	Hole Saw Dia	Std Pk	Mstr Ctn	Prod Code	MSRP
-------------	------	--------------	--------	----------	-----------	------

Clamp-On Saddle x Socket Double Outlet,  
 CPVC Gray

with EPDM O-ring Seal & Zinc-Plated  
 Hardware



2"- 4" 235, 6" 200, 8"-12" 150 psi @ 73°F (23°C)

868-247C	2X1/2	3/4	1	10	096	68.09
868-248C	2X3/4	7/8	1	10	096	68.09
868-249C	2X1	1-1/8	1	10	096	68.09
868-250C	2X1-1/4	1-1/2	1	10	096	68.09
868-251C	2X1-1/2	1-1/2	1	10	096	68.09
868-291C	2-1/2X1-1/2	1-3/4	1	10	096	93.49
868-333C <sup>1</sup>	3X1/2	7/8	1	10	096	93.49
868-334C	3X3/4	7/8	1	10	096	93.49
868-335C	3X1	1-1/8	1	10	096	93.49
868-336C <sup>1</sup>	3X1-1/4	2-1/4	1	10	096	93.49
868-337C <sup>1</sup>	3X1-1/2	2-1/4	1	10	096	93.49
868-338C	3X2	2-1/4	1	10	096	93.49
868-415C <sup>1</sup>	4X1/2	1-1/8	1	10	096	117.34
868-416C <sup>1</sup>	4X3/4	1-1/8	1	10	096	117.34
868-417C	4X1	1-1/8	1	8	096	117.34
868-418C <sup>1</sup>	4X1-1/4	1-3/4	1	8	096	117.34
868-419C	4X1-1/2	1-3/4	1	8	096	117.34
868-420C	4X2	2-1/4	1	8	096	117.34
868-421C <sup>1</sup>	4X2-1/2	3	1	4	096	123.56
868-422C	4X3	3	1	4	096	134.31
868-523C <sup>1</sup>	6X1/2	1-1/8	1	4	096	195.91
868-524C <sup>1</sup>	6X3/4	1-1/8	1	4	096	195.91
868-525C	6X1	1-1/8	1	4	096	195.91
868-526C <sup>1</sup>	6X1-1/4	2-1/4	1	4	096	195.91
868-527C <sup>1</sup>	6X1-1/2	2-1/4	1	4	096	195.91
868-528C	6X2	2-1/4	1	4	096	195.91
868-529C <sup>1</sup>	6X2-1/2	3	1	4	096	208.26
868-530C	6X3	3	1	4	096	220.17
868-532C	6X4	4	1	4	096	227.27
868-573C <sup>1</sup>	8X1/2	4	1	0	096	392.56
868-574C <sup>1</sup>	8X3/4	4	1	0	096	392.56
868-575C <sup>1</sup>	8X1	4	1	0	096	392.56
868-576C <sup>1</sup>	8X1-1/4	4	1	0	096	392.56
868-577C <sup>1</sup>	8X1-1/2	4	1	0	096	392.56
868-578C <sup>1</sup>	8X2	4	1	0	096	392.56
868-579C <sup>1</sup>	8X2-1/2	4	1	0	096	431.76
868-580C <sup>1</sup>	8X3	4	1	0	096	453.40
868-582C	8X4	4	1	0	096	480.56
868-585C	8X6	6	1	0	096	533.42
868-624C	10X4	4	1	0	096	634.82
868-626C	10X6	6	1	0	096	729.98
868-664C	12X4	4	1	0	096	795.62
868-666C	12X6	6	1	0	096	923.09

<sup>1</sup> Outlet-sized with Bushing



**Schedule 80 CPVC Product**  
**Clamp-On Saddles**



**Clamp-On Saddles**

Part Number	Size	Hole Saw Dia	Std Pk	Mstr Ctn	Prod Code	MSRP
-------------	------	--------------	--------	----------	-----------	------

**Clamp-On Saddle x Socket Double Outlet, CPVC Gray**

**with EPDM O-ring Seal & SS Hardware**



2" - 4" 235, 6" 200, 8"-12" 150 psi @ 73°F (23°C)

868S-247C	2X1/2	3/4	1	10	096	107.69
868S-248C	2X3/4	7/8	1	10	096	107.69
868S-249C	2X1	1-1/8	1	10	096	107.69
868S-250C	2X1-1/4	1-1/2	1	10	096	107.69
868S-251C	2X1-1/2	1-1/2	1	10	096	107.69
868S-291C	2-1/2X1-1/2	1-3/4	1	10	096	143.23
868S-333C <sup>1</sup>	3X1/2	7/8	1	10	096	143.23
868S-334C	3X3/4	7/8	1	10	096	143.23
868S-335C	3X1	1-1/8	1	10	096	143.23
868S-336C <sup>1</sup>	3X1-1/4	2-1/4	1	10	096	143.23
868S-337C <sup>1</sup>	3X1-1/2	2-1/4	1	10	096	143.23
868S-338C	3X2	2-1/4	1	10	096	143.23
868S-415C <sup>1</sup>	4X1/2	1-1/8	1	10	096	183.55
868S-416C <sup>1</sup>	4X3/4	1-1/8	1	10	096	183.55
868S-417C	4X1	1-1/8	1	8	096	183.55
868S-418C <sup>1</sup>	4X1-1/4	1-3/4	1	8	096	183.55
868S-419C	4X1-1/2	1-3/4	1	8	096	183.55
868S-420C	4X2	2-1/4	1	8	096	183.55
868S-421C <sup>1</sup>	4X2-1/2	3	1	4	096	192.09
868S-422C	4X3	3	4	0	096	200.89
868S-523C <sup>1</sup>	6X1/2	1-1/8	1	4	096	306.53
868S-524C <sup>1</sup>	6X3/4	1-1/8	1	4	096	306.53
868S-525C	6X1	1-1/8	1	4	096	306.53
868S-526C <sup>1</sup>	6X1-1/4	2-1/4	1	4	096	306.53
868S-527C <sup>1</sup>	6X1-1/2	2-1/4	1	4	096	306.53
868S-528C	6X2	2-1/4	1	4	096	306.53
868S-529C <sup>1</sup>	6X2-1/2	3	1	4	096	321.73
868S-530C	6X3	3	1	4	096	329.49
868S-532C	6X4	4	1	4	096	341.49
868S-573C <sup>1</sup>	8X1/2	4	1	0	096	534.34
868S-574C <sup>1</sup>	8X3/4	4	1	0	096	534.34
868S-575C <sup>1</sup>	8X1	4	1	0	096	534.34
868S-576C <sup>1</sup>	8X1-1/4	4	1	0	096	534.34
868S-577C <sup>1</sup>	8X1-1/2	4	1	0	096	534.34
868S-578C <sup>1</sup>	8X2	4	1	0	096	534.34
868S-579C <sup>1</sup>	8X2-1/2	4	1	0	096	587.76
868S-580C <sup>1</sup>	8X3	4	1	0	096	617.17
868S-582C	8X4	4	1	0	096	654.19
868S-585C	8X6	6	1	0	096	726.29
868S-624C	10X4	4	1	0	096	864.24
868S-626C	10X6	6	1	0	096	993.89
868S-664C	12X4	4	1	0	096	1083.34
868S-666C	12X6	6	1	0	096	1256.62

<sup>1</sup> Outlet-sized with Bushing

Part Number	Size	Hole Saw Dia	Std Pk	Mstr Ctn	Prod Code	MSRP
-------------	------	--------------	--------	----------	-----------	------

**Clamp-On Saddle x SR Thread Double Outlet, CPVC Gray**

**with FKM O-ring Seal & Zinc-Plated Hardware**



2" - 4" 235, 6" 200, 8"-12" 150 psi @ 73°F (23°C)

869V-247CSR	2X1/2	3/4	1	10	096	90.81
869V-248CSR	2X3/4	7/8	1	10	096	90.81
869V-249CSR	2X1	1-1/8	1	10	096	90.81
869V-250CSR	2X1-1/4	1-1/2	1	10	096	90.81
869V-251CSR	2X1-1/2	1-1/2	1	10	096	90.81
869V-291CSR	2-1/2X1-1/2	1-3/4	1	10	096	124.52
869V-333CSR <sup>1</sup>	3X1/2	7/8	1	10	096	124.52
869V-334CSR	3X3/4	7/8	1	10	096	124.52
869V-335CSR	3X1	1-1/8	1	10	096	124.52
869V-336CSR <sup>1</sup>	3X1-1/4	2-1/4	1	10	096	124.52
869V-337CSR <sup>1</sup>	3X1-1/2	2-1/4	1	10	096	124.52
869V-338CSR	3X2	2-1/4	1	10	096	124.52
869V-415CSR <sup>1</sup>	4X1/2	4-1/2	1	10	096	152.39
869V-416CSR <sup>1</sup>	4X3/4	1-1/8	1	10	096	152.39
869V-417CSR	4X1	1-1/8	1	8	096	152.39
869V-418CSR <sup>1</sup>	4X1-1/4	1-3/4	1	8	096	152.39
869V-419CSR	4X1-1/2	1-3/4	1	8	096	152.39
869V-420CSR	4X2	2-1/4	1	8	096	152.39
869V-421CSR <sup>1</sup>	4X2-1/2	3	1	4	096	163.66
869V-422CSR	4X3	3	4	0	096	172.37
869V-523CSR <sup>1</sup>	6X1/2	1-1/8	1	4	096	252.68
869V-524CSR <sup>1</sup>	6X3/4	1-1/8	1	4	096	252.68
869V-525CSR	6X1	1-1/8	1	4	096	252.68
869V-526CSR <sup>1</sup>	6X1-1/4	2-1/4	1	4	096	252.68
869V-527CSR <sup>1</sup>	6X1-1/2	2-1/4	1	4	096	252.68
869V-528CSR	6X2	2-1/4	1	4	096	252.68
869V-529CSR <sup>1</sup>	6X2-1/2	3	1	4	096	265.40
869V-530CSR	6X3	3	1	4	096	276.36
869V-532CSR	6X4	4	1	4	096	292.73
869V-573CSR <sup>1</sup>	8X1/2	4	1	0	096	465.36
869V-574CSR <sup>1</sup>	8X3/4	4	1	0	096	465.36
869V-575CSR <sup>1</sup>	8X1	4	1	0	096	465.36
869V-576CSR <sup>1</sup>	8X1-1/4	4	1	0	096	465.36
869V-577CSR <sup>1</sup>	8X1-1/2	4	1	0	096	465.36
869V-578CSR <sup>1</sup>	8X2	4	1	0	096	465.36
869V-579CSR <sup>1</sup>	8X2-1/2	4	1	0	096	511.88
869V-580CSR <sup>1</sup>	8X3	4	1	0	096	537.43
869V-582CSR	8X4	4	1	0	096	569.66
869V-585CSR	8X6	6	1	0	096	630.11
869V-624CSR	10X4	4	1	0	096	677.75
869V-626CSR	10X6	6	1	0	096	779.52
869V-664CSR	12X4	4	1	0	096	849.74
869V-666CSR	12X6	6	1	0	096	985.56

<sup>1</sup> Outlet-sized with Bushing



Schedule 80 CPVC Product  
**Clamp-On Saddles**

**Clamp-On Saddles**

Part Number	Size	Hole Saw Dia	Std Pk	Mstr Ctn	Prod Code	MSRP
-------------	------	--------------	--------	----------	-----------	------



**Clamp-On Saddle x SR Thread Double Outlet, CPVC Gray**

**with FKM O-ring Seal & SS Hardware**

2"- 4" 235, 6" 200, 8"-12" 150 psi @ 73°F (23°C)

869SV-247CSR	2X1/2	3/4	1	10	096	133.65
869SV-248CSR	2X3/4	7/8	1	10	096	133.65
869SV-249CSR	2X1	1-1/8	1	10	096	133.65
869SV-250CSR	2X1-1/4	1-1/2	1	10	096	133.65
869SV-251CSR	2X1-1/2	1-1/2	1	10	096	133.65
869SV-291CSR	2-1/2X1-1/2	1-1/2	1	10	096	169.38
869SV-333CSR <sup>1</sup>	3X1/2	7/8	1	10	096	169.38
869SV-334CSR	3X3/4	7/8	1	10	096	169.38
869SV-335CSR	3X1	1-1/8	1	10	096	169.38
869SV-336CSR <sup>1</sup>	3X1-1/4	2-1/4	1	10	096	169.38
869SV-337CSR <sup>1</sup>	3X1-1/2	2-1/4	1	10	096	169.38
869SV-338CSR	3X2	2-1/4	1	10	096	169.38
869SV-415CSR <sup>1</sup>	4X1/2	1-1/8	1	10	096	222.41
869SV-416CSR <sup>1</sup>	4X3/4	1-1/8	1	10	096	222.41
869SV-417CSR	4X1	1-1/8	1	8	096	222.41
869SV-418CSR <sup>1</sup>	4X1-1/4	1-3/4	1	8	096	222.41
869SV-419CSR	4X1-1/2	1-3/4	1	8	096	222.41
869SV-420CSR	4X2	2-1/4	1	8	096	222.41
869SV-421CSR <sup>1</sup>	4X2-1/2	3	1	4	096	233.51
869SV-422CSR	4X3	3	4	0	096	250.16
869SV-523CSR <sup>1</sup>	6X1/2	1-1/8	1	4	096	397.42
869SV-524CSR <sup>1</sup>	6X3/4	1-1/8	1	4	096	397.42
869SV-525CSR	6X1	1-1/8	1	4	096	397.42
869SV-526CSR <sup>1</sup>	6X1-1/4	2-1/4	1	4	096	397.42
869SV-527CSR <sup>1</sup>	6X1-1/2	2-1/4	1	4	096	397.42
869SV-528CSR	6X2	2-1/4	1	4	096	397.42
869SV-529CSR <sup>1</sup>	6X2-1/2	3	1	4	096	412.69
869SV-530CSR	6X3	3	1	4	096	425.78
869SV-532CSR	6X4	4	1	4	096	435.54
869SV-573CSR <sup>1</sup>	8X1/2	4	1	0	096	650.94
869SV-574CSR <sup>1</sup>	8X3/4	4	1	0	096	650.94
869SV-575CSR <sup>1</sup>	8X1	4	1	0	096	650.94
869SV-576CSR <sup>1</sup>	8X1-1/4	4	1	0	096	650.94
869SV-577CSR <sup>1</sup>	8X1-1/2	4	1	0	096	650.94
869SV-578CSR <sup>1</sup>	8X2	4	1	0	096	650.94
869SV-579CSR <sup>1</sup>	8X2-1/2	4	1	0	096	715.94
869SV-580CSR <sup>1</sup>	8X3	4	1	0	096	738.60
869SV-582CSR	8X4	4	1	0	096	796.88
869SV-585CSR	8X6	6	1	0	096	851.38
869SV-624CSR	10X4	4	1	0	096	948.27
869SV-626CSR	10X6	6	1	0	096	1090.57
869SV-664CSR	12X4	4	1	0	096	1188.71
869SV-666CSR	12X6	6	1	0	096	1379.01

<sup>1</sup> Outlet-sized with Bushing

Part Number	Size	Hole Saw Dia	Std Pk	Mstr Ctn	Prod Code	MSRP
-------------	------	--------------	--------	----------	-----------	------

**Clamp-On Saddle x SR Thread Double Outlet, CPVC Gray**

**with EPDM O-ring Seal & Zinc-Plated Hardware**



2"- 4" 235, 6" 200, 8"-12" 150 psi @ 73°F (23°C)

869-247CSR	2X1/2	3/4	1	10	096	78.91
869-248CSR	2X3/4	7/8	1	10	096	78.91
869-249CSR	2X1	1-1/8	1	10	096	78.91
869-250CSR	2X1-1/4	1-1/2	1	10	096	78.91
869-251CSR	2X1-1/2	1-1/2	1	10	096	78.91
869-291CSR	2-1/2X1-1/2	1-3/4	1	10	096	106.55
869-333CSR <sup>1</sup>	3X1/2	7/8	1	10	096	106.55
869-334CSR	3X3/4	7/8	1	10	096	106.55
869-335CSR	3X1	1-1/8	1	10	096	106.55
869-336CSR <sup>1</sup>	3X1-1/4	1-1/8	1	10	096	106.55
869-337CSR <sup>1</sup>	3X1-1/2	2-1/4	1	10	096	106.55
869-338CSR	3X2	2-1/4	1	10	096	106.55
869-415CSR <sup>1</sup>	4X1/2	1-1/8	1	10	096	132.26
869-416CSR <sup>1</sup>	4X3/4	1-1/8	1	10	096	132.26
869-417CSR	4X1	1-1/8	1	8	096	132.26
869-418CSR <sup>1</sup>	4X1-1/4	1-3/4	1	8	096	132.26
869-419CSR	4X1-1/2	1-3/4	1	8	096	132.26
869-420CSR	4X2	2-1/4	1	8	096	132.26
869-421CSR <sup>1</sup>	4X2-1/2	3	1	4	096	146.27
869-422CSR	4X3	3	1	4	096	158.29
869-523CSR <sup>1</sup>	6X1/2	1-1/8	1	4	096	216.05
869-524CSR <sup>1</sup>	6X3/4	1-1/8	1	4	096	216.05
869-525CSR	6X1	1-1/8	1	4	096	216.05
869-526CSR <sup>1</sup>	6X1-1/4	2-1/4	1	4	096	216.05
869-527CSR <sup>1</sup>	6X1-1/2	2-1/4	1	4	096	216.05
869-528CSR	6X2	2-1/4	1	4	096	216.05
869-529CSR <sup>1</sup>	6X2-1/2	3	1	4	096	231.25
869-530CSR	6X3	3	1	4	096	250.20
869-532CSR	6X4	4	1	4	096	265.34
869-573CSR <sup>1</sup>	8X1/2	4	1	0	096	418.28
869-574CSR <sup>1</sup>	8X3/4	4	1	0	096	418.28
869-575CSR <sup>1</sup>	8X1	4	1	0	096	418.28
869-576CSR <sup>1</sup>	8X1-1/4	4	1	0	096	418.28
869-577CSR <sup>1</sup>	8X1-1/2	4	1	0	096	418.28
869-578CSR <sup>1</sup>	8X2	4	1	0	096	418.28
869-579CSR <sup>1</sup>	8X2-1/2	4	1	0	096	460.19
869-580CSR <sup>1</sup>	8X3	4	1	0	096	483.29
869-582CSR	8X4	4	1	0	096	512.23
869-585CSR	8X6	6	1	0	096	553.48
869-624CSR	10X4	4	1	0	096	609.46
869-626CSR	10X6	6	1	0	096	701.01
869-664CSR	12X4	4	1	0	096	764.12
869-666CSR	12X6	6	1	0	096	886.35

<sup>1</sup> Outlet-sized with Bushing

Schedule 80 CPVC Product  
**Clamp-On Saddles & Hot-Tap Saddles**



**Clamp-On Saddles**

Part Number	Size	Hole Saw Dia	Std Pk	Mstr Ctn	Prod Code	MSRP
-------------	------	--------------	--------	----------	-----------	------



**Clamp-On Saddle x SR Thread Double Outlet, CPVC Gray**

**with EPDM O-ring Seal & SS Hardware**

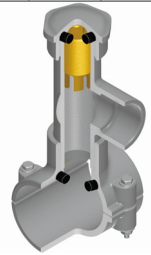
2"- 4" 235, 6" 200, 8"-12" 150 psi @ 73°F (23°C)

869S-247CSR	2X1/2	3/4	1	10	096	126.82
869S-248CSR	2X3/4	7/8	1	10	096	126.82
869S-249CSR	2X1	1-1/8	1	10	096	126.82
869S-250CSR	2X1-1/4	1-1/2	1	10	096	126.82
869S-251CSR	2X1-1/2	1-1/2	1	10	096	126.82
869S-291CSR	2-1/2X1-1/2	1-3/4	1	10	096	167.25
869S-333CSR <sup>1</sup>	3X1/2	7/8	1	10	096	167.25
869S-334CSR	3X3/4	7/8	1	10	096	167.25
869S-335CSR	3X1	1-1/8	1	10	096	167.25
869S-336CSR <sup>1</sup>	3X1-1/4	2-1/4	1	10	096	167.25
869S-337CSR <sup>1</sup>	3X1-1/2	2-1/4	1	10	096	167.25
869S-338CSR	3X2	2-1/4	1	10	096	167.25
869S-415CSR <sup>1</sup>	4X1/2	1-1/8	1	10	096	209.42
869S-416CSR <sup>1</sup>	4X3/4	1-1/8	1	10	096	209.42
869S-417CSR	4X1	1-1/8	1	8	096	209.42
869S-418CSR <sup>1</sup>	4X1-1/4	1-3/4	1	8	096	209.42
869S-419CSR	4X1-1/2	1-3/4	1	8	096	209.42
869S-420CSR	4X2	2-1/4	1	8	096	209.42
869S-421CSR <sup>1</sup>	4X2-1/2	3	1	4	096	224.97
869S-422CSR	4X3	3	4	0	096	241.14
869S-523CSR <sup>1</sup>	6X1/2	1-1/8	1	4	096	352.71
869S-524CSR <sup>1</sup>	6X3/4	1-1/8	1	4	096	352.71
869S-525CSR	6X1	1-1/8	1	4	096	352.71
869S-526CSR <sup>1</sup>	6X1-1/4	2-1/4	1	4	096	352.71
869S-527CSR <sup>1</sup>	6X1-1/2	2-1/4	1	4	096	352.71
869S-528CSR	6X2	2-1/4	1	4	096	352.71
869S-529CSR <sup>1</sup>	6X2-1/2	3	1	4	096	360.63
869S-530CSR	6X3	3	1	4	096	376.57
869S-532CSR	6X4	4	1	4	096	387.08
869S-573CSR <sup>1</sup>	8X1/2	4	1	0	096	593.65
869S-574CSR <sup>1</sup>	8X3/4	4	1	0	096	593.65
869S-575CSR <sup>1</sup>	8X1	4	1	0	096	593.65
869S-576CSR <sup>1</sup>	8X1-1/4	4	1	0	096	593.65
869S-577CSR <sup>1</sup>	8X1-1/2	4	1	0	096	593.65
869S-578CSR <sup>1</sup>	8X2	4	1	0	096	593.65
869S-579CSR <sup>1</sup>	8X2-1/2	4	1	0	096	652.96
869S-580CSR <sup>1</sup>	8X3	4	1	0	096	685.53
869S-582CSR	8X4	4	1	0	096	726.72
869S-585CSR	8X6	6	1	0	096	763.17
869S-624CSR	10X4	4	1	0	096	864.80
869S-626CSR	10X6	6	1	0	096	994.44
869S-664CSR	12X4	4	1	0	096	1084.05
869S-666CSR	12X6	6	1	0	096	1257.36

<sup>1</sup> Outlet-sized with Bushing

**Hot-Tap Saddles**

Part Number	Size	Std Pk	Mstr Ctn	Prod Code	MSRP
-------------	------	--------	----------	-----------	------



**Hot-Tap Saddle CPVC Gray**

**EPDM Saddle x Socket (Spigot) Zinc Plated Bolts**

2"- 4" 235, 6" 200, 8" 150 psi @ 73°F (23°C)

HT2-248C	2X3/4 (1)	1	5	050	89.63
HT2-251C	2X1-1/2 (2)	1	5	050	185.01
HT2-288C	2-1/2X3/4 (1)	1	5	050	95.67
HT2-291C	2-1/2X1-1/2 (2)	1	5	050	191.19
HT2-334C	3X3/4 (1)	1	5	050	109.62
HT2-337C	3X1-1/2 (2)	1	5	050	210.85
HT2-416C	4X3/4 (1)	1	5	050	126.65
HT2-419C	4X1-1/2 (2)	1	0	050	222.94
HT2-524C	6X3/4 (1)	1	5	050	142.43
HT2-527C	6X1-1/2 (2)	1	0	050	237.33
HT2-574C	8X3/4 (1)	1	5	050	131.18
HT2-577C	8X1-1/2 (2)	1	0	050	245.06

**Not intended to convey or dispense water for human consumption through drinking or cooking**

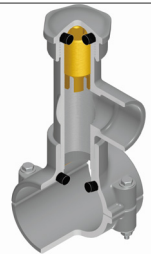
**Hot-Tap Saddle CPVC Gray**

**EPDM Saddle x Socket (Spigot) SS316 Bolts**

2"- 4" 235, 6" 200, 8" 150 psi @ 73°F (23°C)

HT2S-248C	2X3/4 (1)	1	5	050	139.33
HT2S-251C	2X1-1/2 (2)	1	5	050	287.96
HT2S-288C	2-1/2X3/4 (1)	1	5	050	148.93
HT2S-291C	2-1/2X1-1/2 (2)	1	5	050	297.71
HT2S-334C	3X3/4 (1)	1	5	050	170.77
HT2S-337C	3X-1/2 (2)	1	5	050	328.21
HT2S-416C	4X3/4 (1)	1	5	050	197.24
HT2S-419C	4X1-1/2 (2)	1	0	050	347.11
HT2S-524C	6X3/4 (1)	1	5	050	221.39
HT2S-527C	6X1-1/2 (2)	1	0	050	369.39
HT2S-574C	8X3/4 (1)	1	0	050	239.35
HT2S-577C	8X1-1/2 (2)	1	0	050	399.42

**Not intended to convey or dispense water for human consumption through drinking or cooking**







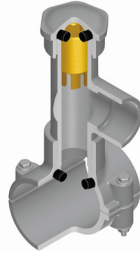
# Hot-Tap Saddles

## Hot-Tap Saddles

Part Number	Size	Std Pk	Mstr Ctn	Prod Code	MSRP
-------------	------	--------	----------	-----------	------

### Hot-Tap Saddle CPVC Gray

**FKM Saddle x Soc (Spigot) Zinc Plated Bolts**



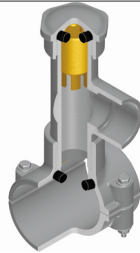
2"- 4" 235, 6" 200, 8" 150 psi @ 73°F (23°C)

HT3-248C	2X3/4 (1)	1	5	050	97.39
HT3-251C	2X1-1/2 (2)	1	5	050	200.79
HT3-288C	2-1/2X3/4 (1)	1	5	050	104.04
HT3-291C	2-1/2X1-1/2 (2)	1	5	050	207.44
HT3-334C	3X3/4 (1)	1	5	050	118.89
HT3-337C	3X1-1/2 (2)	1	5	050	229.12
HT3-416C	4X3/4 (1)	1	5	050	213.96
HT3-419C	4X1-1/2 (2)	1	0	050	242.13
HT3-524C	6X3/4 (1)	1	5	050	154.65
HT3-527C	6X1-1/2 (2)	1	0	050	256.99
HT3-574C	8X3/4 (1)	1	0	050	167.19
HT3-577C	8X1-1/2 (2)	1	0	050	311.51

**Not intended to convey or dispense water for human consumption through drinking or cooking**

### Hot-Tap Saddle CPVC Gray

**FKM Saddle x Socket (Spigot) SS316 Bolts**



2"- 4" 235, 6" 200, 8" 150 psi @ 73°F (23°C)

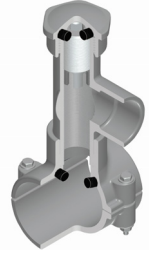
HT3S-248C	2X3/4 (1)	1	5	050	151.73
HT3S-251C	2X1-1/2 (2)	1	5	050	312.72
HT3S-288C	2-1/2X3/4 (1)	1	5	050	161.93
HT3S-291C	2-1/2X1-1/2 (2)	1	5	050	322.79
HT3S-334C	3X3/4 (1)	1	5	050	184.85
HT3S-337C	3X1-1/2 (2)	1	5	050	363.20
HT3S-416C	4X3/4 (1)	1	5	050	213.96
HT3S-419C	4X1-1/2 (2)	1	0	050	376.98
HT3S-524C	6X3/4 (1)	1	5	050	240.75
HT3S-527C	6X1-1/2 (2)	1	0	050	400.03
HT3S-574C	8X3/4 (1)	1	0	050	260.24
HT3S-577C	8X1-1/2 (2)	1	5	050	432.47

**Not intended to convey or dispense water for human consumption through drinking or cooking**

Part Number	Size	Std Pk	Mstr Ctn	Prod Code	MSRP
-------------	------	--------	----------	-----------	------

### Hot-Tap Saddle CPVC Gray

**EPDM with Stainless Steel Cutter & Bolts**



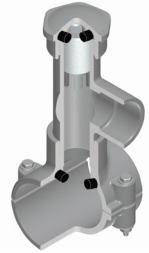
2"- 4" 235, 6" 200, 8" 150 psi @ 73°F (23°C)

HTS2S-248C	2X3/4 (1)	1	5	050	428.68
HTS2S-251C	2X1-1/2 (2)	1	5	050	635.32
HTS2S-288C	2-1/2X3/4 (1)	1	5	050	458.69
HTS2S-291C	2-1/2X1-1/2 (2)	1	5	050	636.34
HTS2S-334C	3X3/4 (1)	1	5	050	437.49
HTS2S-337C	3X1-1/2 (2)	1	5	050	654.08
HTS2S-416C	4X3/4 (1)	1	5	050	465.83
HTS2S-419C	4X1-1/2 (2)	1	0	050	670.35
HTS2S-524C	6X3/4 (1)	1	5	050	543.00
HTS2S-527C	6X1-1/2 (2)	1	0	050	757.77
HTS2S-574C	8X3/4 (1)	1	0	050	753.26
HTS2S-577C	8X1-1/2 (2)	1	0	050	897.19

Lead Free

### Hot-Tap Saddle CPVC Gray

**FKM with Stainless Steel Cutter & Bolts**



2"- 4" 235, 6" 200, 8" 150 psi @ 73°F (23°C)

HTS3S-248C	2X3/4 (1)	1	5	050	435.40
HTS3S-251C	2X1-1/2 (2)	1	5	050	644.99
HTS3S-288C	2-1/2X3/4 (1)	1	5	050	465.98
HTS3S-291C	2-1/2X1-1/2 (2)	1	5	050	647.53
HTS3S-334C	3X3/4 (1)	1	5	050	400.67
HTS3S-337C	3X1-1/2 (2)	1	5	050	665.44
HTS3S-416C	4X3/4 (1)	1	5	050	474.61
HTS3S-419C	4X1-1/2 (2)	1	0	050	687.17
HTS3S-524C	6X3/4 (1)	1	5	050	551.49
HTS3S-527C	6X1-1/2 (2)	1	0	050	774.57
HTS3S-574C	8X3/4 (1)	1	0	050	769.93
HTS3S-577C	8X1-1/2 (2)	1	0	050	905.22

Lead Free