



Schedule 80 CPVC Product  
**GripLoc™ Coupling & GripLoc™ Cap & CPVC Flange Cut-in Kit**

**GripLoc™ Coupling**

Part Number	Size	Std Pk	Mstr Ctn	Prod Code	MSRP
-------------	------	--------	----------	-----------	------

**GripLoc™ Coupling**

**WARNING: DO NOT INSERT FINGERS**  
**EPDM Gasket**  
**Pressure Rated to 235 psi @ 73°F**



Uses No Solvent Cement

GL429-005C	1/2	1	40	132	16.88
GL429-007C	3/4	1	36	132	20.83
GL429-010C	1	1	20	132	22.37
GL429-012C	1-1/4	1	15	132	23.68
GL429-015C	1-1/2	1	15	132	23.68
GL429-020C	2	1	10	132	26.32

**GripLoc™ IPS Size Release Tool**

**For Removal of GripLoc™ Fittings**

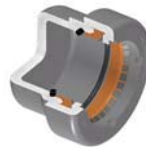


GLIPSRT-005	1/2	1	50	299	5.26
GLIPSRT-007	3/4	1	50	299	5.26
GLIPSRT-010	1	1	50	299	5.26

**GripLoc™ Cap**

**GripLoc™ Cap**

**WARNING: DO NOT INSERT FINGERS**  
**EPDM Gasket**  
**Pressure Rated to 235 psi @ 73°F**



Uses No Solvent Cement

GL447-005C	1/2	25	150	132	14.74
GL447-007C	3/4	1	50	132	18.97
GL447-010C	1	1	50	132	20.77
GL447-012C	1-1/4	1	25	132	28.48
GL447-015C	1-1/2	1	25	132	33.12
GL447-020C	2	1	25	132	38.03

**CPVC Flange Cut-in Kit**

When planned system changes are needed, system downtime can be a major concern. Spears® Flange Cut-in Kit minimizes downtime for actual cut-in to allow new connection in just minutes. Kit provides all necessary components to create a flanged joint for connection to system alterations in just minutes. Special Flange Hub can be cemented to piping and allowed to cure before shutting down and cutting into system. This allows immediate joining to mating flange (included) that can also be pre-assembled to desired alteration piping.

Kit includes special Split Flange Socket Hub, O-ring Sealed Hub Body, Stainless Steel Clamp, Split Ring, Full-Faced EPDM or FKM Gasket, Mating Flange Hub & Ring, and complete set of Stainless Steel Bolts, Flat Washers and anti-seize Brass Nuts to make the final joint. Available for IPS Pipe Sizes 1-1/2" - 12".

(Continued on next column)

**CPVC Flange Cut-in Kit**

(Continued)



**Pressure Rated to 150 psi @ 73°F (22°C)**  
**Maximum Service Temperature**  
**PVC = 140°F (60°C)**  
**CPVC = 200°F (93°C)**  
**Temperature/Pressure De-ratings Apply**

**Flange Cut-in Kit**

Size	EPDM Gasket	FKM Gasket	Std Pk	Mstr Pk	Prod Code
1-1/2	FCKE-015C <b>688.27</b>	FCKV-015C <b>732.07</b>	1	4	017
2	FCKE-020C <b>768.75</b>	FCKV-020C <b>811.16</b>	1	4	017
2-1/2	FCKE-025C <b>819.16</b>	FCKV-025C <b>886.75</b>	1	0	017
3	FCKE-030C <b>892.38</b>	FCKV-030C <b>926.68</b>	1	0	017
4	FCKE-040C <b>1365.19</b>	FCKV-040C <b>1418.22</b>	1	0	017
6	FCKE-060C <b>2210.94</b>	FCKV-060C <b>2518.61</b>	1	0	017
8	FCKE-080C <b>2805.77</b>	FCKV-080C <b>3196.49</b>	1	0	017
10	FCKE-100C <b>4544.23</b>	FCKV-100C <b>4695.49</b>	1	0	017
12	FCKE-120C <b>5407.25</b>	FCKV-120C <b>5644.44</b>	1	0	017