



CPVC GripLoc™ Fittings



PRODUCT

Contact Spears® for any Information not found.



Schedule 80 CPVC Product
GripLoc™ Coupling & GripLoc™ Cap & CPVC Flange Cut-in Kit

GripLoc™ Coupling

Part Number	Size	Std Pk	Mstr Ctn	Prod Code	MSRP
-------------	------	--------	----------	-----------	------

GripLoc™ Coupling

WARNING: DO NOT INSERT FINGERS
EPDM Gasket
Pressure Rated to 235 psi @ 73°F



Uses No Solvent Cement

GL429-005C	1/2	1	40	132	16.88
GL429-007C	3/4	1	36	132	20.83
GL429-010C	1	1	20	132	22.37
GL429-012C	1-1/4	1	15	132	23.68
GL429-015C	1-1/2	1	15	132	23.68
GL429-020C	2	1	10	132	26.32

GripLoc™ IPS Size Release Tool

For Removal of GripLoc™ Fittings

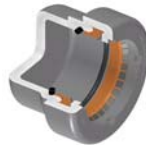


GLIPSRT-005	1/2	1	50	299	5.26
GLIPSRT-007	3/4	1	50	299	5.26
GLIPSRT-010	1	1	50	299	5.26

GripLoc™ Cap

GripLoc™ Cap

WARNING: DO NOT INSERT FINGERS
EPDM Gasket
Pressure Rated to 235 psi @ 73°F



Uses No Solvent Cement

GL447-005C	1/2	25	150	132	14.74
GL447-007C	3/4	1	50	132	18.97
GL447-010C	1	1	50	132	20.77
GL447-012C	1-1/4	1	25	132	28.48
GL447-015C	1-1/2	1	25	132	33.12
GL447-020C	2	1	25	132	38.03

CPVC Flange Cut-in Kit

When planned system changes are needed, system downtime can be a major concern. Spears® Flange Cut-in Kit minimizes downtime for actual cut-in to allow new connection in just minutes. Kit provides all necessary components to create a flanged joint for connection to system alterations in just minutes. Special Flange Hub can be cemented to piping and allowed to cure before shutting down and cutting into system. This allows immediate joining to mating flange (included) that can also be pre-assembled to desired alteration piping.

Kit includes special Split Flange Socket Hub, O-ring Sealed Hub Body, Stainless Steel Clamp, Split Ring, Full-Faced EPDM or FKM Gasket, Mating Flange Hub & Ring, and complete set of Stainless Steel Bolts, Flat Washers and anti-seize Brass Nuts to make the final joint. Available for IPS Pipe Sizes 1-1/2" - 12".

(Continued on next column)

CPVC Flange Cut-in Kit

(Continued)



Pressure Rated to 150 psi @ 73°F (22°C)
Maximum Service Temperature
PVC = 140°F (60°C)
CPVC = 200°F (93°C)
Temperature/Pressure De-ratings Apply

Flange Cut-in Kit

Size	EPDM Gasket	FKM Gasket	Std Pk	Mstr Pk	Prod Code
1-1/2	FCKE-015C 688.27	FCKV-015C 732.07	1	4	017
2	FCKE-020C 768.75	FCKV-020C 811.16	1	4	017
2-1/2	FCKE-025C 819.16	FCKV-025C 886.75	1	0	017
3	FCKE-030C 892.38	FCKV-030C 926.68	1	0	017
4	FCKE-040C 1365.19	FCKV-040C 1418.22	1	0	017
6	FCKE-060C 2210.94	FCKV-060C 2518.61	1	0	017
8	FCKE-080C 2805.77	FCKV-080C 3196.49	1	0	017
10	FCKE-100C 4544.23	FCKV-100C 4695.49	1	0	017
12	FCKE-120C 5407.25	FCKV-120C 5644.44	1	0	017