



**Pipe & Hangers Product**  
**CLIC® TOP & CLIC® Pipe Clamp Hangers, Spacers & Accessories**

**CLIC® TOP & CLIC® Spacers**

Part Number	Size	Std Pk	Mstr Ctn	Prod Code	MSRP
-------------	------	--------	----------	-----------	------

**CLIC® Stand-Off Spacers**

**Fits All CLIC® TOP & CLIC® Hangers**



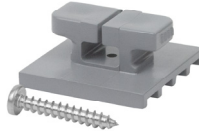
Approximate distance from mounting surface to surface of pipe.  
 For Internal or External Use

CLIC-SP2	3/32	100	0	893	1.61
CLIC-SP5	3/16	100	0	893	1.91
CLIC-SP15	9/16	100	0	893	2.59
CLIC-SP25	1	100	0	893	2.82
CLIC-SP35	1-3/8	100	0	893	3.52
CLIC-SP45	1-3/4	100	0	893	3.95
CLIC-SP65	2-9/16	50	0	893	6.34
CLIC-SP85	3-5/16	50	0	893	6.52

**CLIC® TOP & CLIC® Mounting Accessories**

**Strut Hangers**

**With Mounting Screw - Fits All CLIC® TOP & CLIC® Hangers or Spacers**



Provides Easy Mount to Standard 1-5/8" width Strut Channel

SH-109CLIC	for 3/8" - 2" Pipe Clamps	1	25	892	6.45
------------	---------------------------	---	----	-----	------

Designed for Single (1) Installation on 3/8" - 2" Hangers; includes 1-1/4" #10 screw, Use Double (2) Strut Hangers with 2-1/2" #10 screws (2) on Each 2-1/2" through 4" Size CLIC® TOP or CLIC® Pipe Hangers.

**Mounting Flange Nut - Stainless Steel**

**Fits All CLIC® TOP & CLIC® Hangers**



Fits Hanger Base to provide 1/4"-20 threaded rod, stud or bolt connection

FN-101CLIC	1/4-20	25	1500	892	.63
------------	--------	----	------	-----	-----

**Flange Nut Mounting Adapter - Stainless Steel**

**1/4"-20 Male to 3/8"-16 Female Adapter**



Adapts CLIC Flange Nut to 3/8"-16 threaded rod, stud or bolt connection

FA-102CLIC	1/4-20X3/8-16	10	250	892	9.68
------------	---------------	----	-----	-----	------

Part Number	Size	Std Pk	Mstr Ctn	Prod Code	MSRP
-------------	------	--------	----------	-----------	------

**Double Thread Stud - Stainless Steel**

**1/4"-20 Stud 1/2" Long**



For connection of 2-CLIC Flange Nuts for Back-to-Back Hanger Mounting

98-63-074	1/4-20X1/2	100	0	299	2.01
-----------	------------	-----	---	-----	------

**Mounting Base Plates for 2 & 3 Pipe Lines**

**Fits CLIC® TOP & CLIC® Hangers up to 3/4" IPS & 1" CTS Pipe Sizes (CLIC# 8-28)**



For 2-pc or 3-pc Hanger Mounting - Hangers Snap-fit onto Base Plate

MBP-2	2-pc Plate	50	0	893	2.15
MBP-3	3-pc Plate	25	0	893	2.44