



Marine & Offshore Products

EverTUFF® CTS CPVC Hot & Cold Water Distribution Pipe & Fittings

EverTUFF® CTS CPVC Hot & Cold Water Distribution Pipe & Fittings



PRODUCT

Contact Spears® for any Information not found.



CTS CPVC Pipe - USCG Approved

Part Number	Size	Std Pk	Mstr Ctn	Prod Code	MSRP
-------------	------	--------	----------	-----------	------

CTS CPVC Pipe SDR 11 - CTS MARINE

10 Ft Length



Priced per foot
NSF® Certified Lead Free

CG-CTS-005	1/2	500	0	176	1.29
CG-CTS-007	3/4	250	0	176	2.31
CG-CTS-010	1	150	0	176	4.75
CG-CTS-012	1-1/4	100	0	176	7.04
CG-CTS-015	1-1/2	100	0	176	9.34
CG-CTS-020	2	50	0	176	15.80

CTS CPVC Pipe SDR 11 - CTS MARINE

20 FT Lengths



Priced per foot
NSF® Certified Lead Free

CG-CTS-005-20	1/2	1000	0	176	1.29
CG-CTS-007-20	3/4	500	0	176	2.31
CG-CTS-010-20	1	300	0	176	4.75
CG-CTS-012-20	1-1/4	200	0	176	7.04
CG-CTS-015-20	1-1/2	200	0	176	9.34
CG-CTS-020-20	2	100	0	176	15.80

Pipe - CPVC CTS Coiled SDR 11 - CTS MARINE

100 ft. Coil, Priced Per Foot



NSF® Certified Lead Free

CG-CTS-005-100	1/2	100	0	176	1.51
CG-CTS-007-100	3/4	100	0	176	2.89
CG-CTS-010-100	1	100	0	176	5.94

CPVC CTS COILED PIPE WEIGHTS:
 CTS-005-100 Weight per Foot .090 lbs; per Coil Weight 9 lbs.
 CTS-007-100 Weight per Foot .149 lbs; per Coil Weight 14.9 lbs.
 CTS-010-100 Weight per Foot .239 lbs; per Coil Weight 23.9 lbs.
WARNING: Banded coils will expand when opened. Exercise caution to avoid injury during banding removal.

CTS CPVC Fittings & Valves - ABS & USCG Approved

Part Number	Size	Std Pk	Mstr Ctn	Prod Code	MSRP
-------------	------	--------	----------	-----------	------

Tee -CTS MARINE

Socket x Socket x Socket



NSF® Certified Lead Free

CG-4101-005	1/2	100	500	173	1.34
CG-4101-007	3/4	50	250	173	2.50
CG-4101-010	1	10	100	173	12.54
CG-4101-012	1-1/4	10	100	173	19.33
CG-4101-015	1-1/2	5	50	173	25.18
CG-4101-020	2	5	25	173	40.70

Tee - Reducing - CTS MARINE

Socket x Socket x Socket



NSF® Certified Lead Free

CG-4101-074	1/2X1/2X3/4	10	100	173	4.65
CG-4101-094	3/4X1/2X1/2	50	250	173	2.49
CG-4101-095	3/4X1/2X3/4	25	250	173	3.40
CG-4101-101	3/4X3/4X1/2	50	250	173	2.59
CG-4101-102 ¹	3/4X3/4X1	10	100	173	27.78
CG-4101-120 ¹	1X1/2X1/2	10	100	173	29.94
CG-4101-121 ¹	1X1/2X3/4	10	100	173	30.75
CG-4101-122 ¹	1X1/2X1	10	100	173	23.44
CG-4101-124 ¹	1X3/4X1/2	10	100	173	27.95
CG-4101-125	1X3/4X3/4	10	100	173	15.28
CG-4101-126 ¹	1X3/4X1	10	100	173	22.36
CG-4101-130	1X1X1/2	10	100	173	14.30
CG-4101-131	1X1X3/4	10	100	173	13.65
CG-4101-138 ¹	1-1/4X1/2X1/2	10	80	173	34.90
CG-4101-139 ¹	1-1/4X1/2X3/4	10	80	173	34.90
CG-4101-142 ¹	1-1/4X1/2X1-1/4	10	80	173	34.90
CG-4101-146 ¹	1-1/4X3/4X1/2	10	80	173	34.90
CG-4101-147 ¹	1-1/4X3/4X3/4	10	80	173	31.18
CG-4101-148 ¹	1-1/4X3/4X1	10	80	173	33.79
CG-4101-149 ¹	1-1/4X3/4X1-1/4	10	80	173	31.05
CG-4101-156 ¹	1-1/4X1X1/2	10	80	173	33.00
CG-4101-157 ¹	1-1/4X1X3/4	10	80	173	31.59
CG-4101-158 ¹	1-1/4X1X1	10	100	173	32.44
CG-4101-159 ¹	1-1/4X1X1-1/4	10	80	173	36.39
CG-4101-166	1-1/4X1/2	10	100	173	34.90
CG-4101-167	1-1/4X3/4	10	100	173	31.05
CG-4101-168	1-1/4X1-1/4X1	10	100	173	32.83
CG-4101-169	1-1/4X1-1/4X1-1/2	5	40	173	34.90
CG-4101-173 ¹	1-1/2X1/2X1/2	5	40	173	42.28
CG-4101-174 ¹	1-1/2X1/2X3/4	5	40	173	42.28
CG-4101-175 ¹	1-1/2X1/2X1	5	40	173	42.28
CG-4101-176 ¹	1-1/2X1/2X1-1/4	5	40	173	42.28
CG-4101-177 ¹	1-1/2X1/2X1-1/2	5	40	173	42.28
CG-4101-182 ¹	1-1/2X3/4X1/2	5	40	173	42.28



Marine & Offshore Products
CTS CPVC Fittings & Valves - ABS & USCG Approved

CTS CPVC Fittings & Valves - ABS & USCG Approved

Part Number	Size	Std Pk	Mstr Ctn	Prod Code	MSRP
Tee - Reducing - CTS MARINE (continued)					
Socket x Socket x Socket					
CG-4101-184 ¹	1-1/2X3/4X3/4	5	40	173	42.28
CG-4101-185 ¹	1-1/2X3/4X1	5	40	173	42.28
CG-4101-186 ¹	1-1/2X3/4X1-1/4	5	40	173	42.28
CG-4101-188 ¹⁴	1-1/2X3/4X1-1/2	5	40	173	42.28
CG-4101-193 ¹	1-1/2X1X1/2	5	40	173	42.28
CG-4101-194 ¹	1-1/2X1X3/4	5	40	173	42.28
CG-4101-195 ¹	1-1/2X1X1	10	100	173	42.28
CG-4101-196 ¹	1-1/2X1X1-1/4	5	40	173	42.28
CG-4101-197 ¹	1-1/2X1X1-1/2	5	40	173	42.28
CG-4101-199 ¹	1-1/2X1-1/4X1/2	5	40	173	42.28
CG-4101-201 ¹	1-1/2X1-1/4X3/4	5	40	173	42.28
CG-4101-202 ¹	1-1/2X1-1/4X1	5	40	173	42.28
CG-4101-203 ¹	1-1/2X1-1/4X1-1/4	5	40	173	42.28
CG-4101-204 ¹	1-1/2X1-1/4X1-1/2	5	40	173	42.28
CG-4101-209	1-1/2X1-1/2X1/2	10	50	173	37.56
CG-4101-210	1-1/2X3/4	10	100	173	31.31
CG-4101-211	1-1/2X1	5	50	173	28.68
CG-4101-212 ¹	1-1/2X1-1/2X1-1/4	5	50	173	42.28
CG-4101-213 ¹	1-1/2X1-1/2X2	5	0	173	42.28
CG-4101-216 ¹	2X1/2X1/2	5	0	173	52.93
CG-4101-217 ¹	2X1/2X3/4	5	0	173	52.93
CG-4101-218 ¹	2X1/2X1	5	0	173	52.93
CG-4101-219 ¹	2X1/2X1-1/4	5	0	173	52.93
CG-4101-220 ¹	2X1/2X1-1/2	5	0	173	52.93
CG-4101-221 ¹	2X1/2X2	5	0	173	52.93
CG-4101-222 ¹	2X3/4X1/2	5	0	173	52.93
CG-4101-223 ¹	2X3/4X3/4	5	0	173	52.93
CG-4101-224 ¹	2X3/4X1	5	0	173	52.93
CG-4101-225 ¹	2X3/4X1-1/4	5	0	173	52.93
CG-4101-226 ¹	2X3/4X1-1/2	5	0	173	52.93
CG-4101-227 ¹	2X3/4X2	5	0	173	52.93
CG-4101-228 ¹	2X1X1/2	5	0	173	52.93
CG-4101-229 ¹	2X1X3/4	5	0	173	52.93
CG-4101-230 ¹	2X1X1	5	0	173	52.93
CG-4101-231 ¹	2X1X1-1/4	5	0	173	52.93
CG-4101-232 ¹	2X1X1-1/2	5	0	173	52.93
CG-4101-233 ¹	2X1X2	5	0	173	52.93
CG-4101-234 ¹	2X1-1/4X1/2	5	0	173	52.93
CG-4101-235 ¹	2X1-1/4X3/4	5	0	173	52.93
CG-4101-236 ¹	2X1-1/4X1	5	0	173	52.93
CG-4101-237 ¹	2X1-1/2X1/2	5	0	173	52.93
CG-4101-238 ¹	2X1-1/2X3/4	5	0	173	52.93
CG-4101-239 ¹	2X1-1/2X1	5	0	173	52.93
CG-4101-240 ¹	2X1-1/2X1-1/4	5	0	173	52.93
CG-4101-241 ¹	2X1-1/2X1-1/2	5	0	173	52.93
CG-4101-242 ¹	2X1-1/4X1-1/4	5	0	173	52.93
CG-4101-243 ¹	2X1-1/4X1-1/2	5	0	173	52.93
CG-4101-244 ¹	2X1-1/4X2	5	0	173	52.93
CG-4101-247	2X1/2	10	30	173	47.48
CG-4101-248	2X3/4	5	25	173	40.83

Part Number	Size	Std Pk	Mstr Ctn	Prod Code	MSRP
-------------	------	--------	----------	-----------	------

Tee - Reducing - CTS MARINE (continued)

Socket x Socket x Socket

CG-4101-249	2X1	5	25	173	40.83
CG-4101-250 ¹	2X2X1-1/4	5	25	173	46.01
CG-4101-251 ¹	2X2X1-1/2	5	25	173	46.01
CG-4101-257 ¹	2X1-1/2X2	5	0	173	46.01

¹ Outlet sized with bushing.



90° EII - CTS MARINE

Socket x Socket

NSF® Certified Lead Free

CG-4106-005	1/2	100	1000	173	1.04
CG-4106-007	3/4	50	500	173	1.71
CG-4106-010	1	10	100	173	5.00
CG-4106-012	1-1/4	10	100	173	9.99
CG-4106-015	1-1/2	10	100	173	18.00
CG-4106-020	2	5	100	173	34.55



90° EII - Reducing - CTS MARINE

Socket x Socket

NSF® Certified Lead Free

CG-4106-101	3/4X1/2	50	250	173	3.61
CG-4106-130 ¹	1X1/2	25	200	173	13.66
CG-4106-131 ¹	1X3/4	25	200	173	13.68
CG-4106-167 ¹	1/4X3/4	10	80	173	22.73
CG-4106-168 ¹	1-1/4X1	10	80	173	21.68
CG-4106-209 ¹	1-1/2X1/2	10	0	173	36.80
CG-4106-210 ¹	1-1/2X3/4	10	0	173	36.80
CG-4106-211 ¹	1-1/2X1	10	0	173	36.30
CG-4106-212 ¹	1-1/2X1-1/4	10	0	173	36.30
CG-4106-247 ¹	2X1/2	5	30	173	75.54
CG-4106-248 ¹	2X3/4	5	30	173	73.81
CG-4106-249 ¹	2X1	5	30	173	73.00
CG-4106-250 ¹	2X1-1/4	5	30	173	72.95
CG-4106-251 ¹	2X1-1/2	5	30	173	72.95

¹ Outlet sized with bushing



90° EII - Special Reinforced - CTS MARINE

Socket x SR Fipt - Stainless Steel Collar

NSF® Certified Lead Free

CG-4107-005SR	1/2	50	300	173	11.60
---------------	-----	----	-----	-----	-------

Drop Ear 90° EII - CPVC Fitting with Bracket - CTS MARINE

Socket x Socket

NSF® Certified Lead Free

CG-DE4106-005	1/2	25	150	173	3.15
---------------	-----	----	-----	-----	------



Marine & Offshore Products
CTS CPVC Fittings & Valves - ABS & USCG Approved



CTS CPVC Fittings & Valves - ABS & USCG Approved

Part Number	Size	Std Pk	Mstr Ctn	Prod Code	MSRP
-------------	------	--------	----------	-----------	------

Drop Ear 90° EII - Special Reinforced CPVC Fitting with Bracket - CTS MARINE

Socket x SR Fipt - Stainless Steel Collar

NSF® Certified Lead Free

CG-DE4107-005SR	1/2	10	200	173	11.96
-----------------	-----	----	-----	-----	-------



Drop Ear EII Bracket ONLY - CTS MARINE

For 4107-005SR

CG-DET-005	1/2	400	0	173	2.36
------------	-----	-----	---	-----	------



Drop Ear EII - Stainless Steel Thread - CTS MARINE

Drop Ear EII - Stainless Steel Thread

NSF® Certified Lead Free

CG-DE4107-005SS	1/2	100	0	173	24.93
-----------------	-----	-----	---	-----	-------



Drop Ear EII - Stainless Steel Thread/CPVC Body - CTS MARINE

Socket x SS Fipt

NSF® Certified Lead Free

CG-DE4107005CSS	1/2	100	0	173	17.73
-----------------	-----	-----	---	-----	-------



90° Street EII - CTS MARINE

Spigot x Socket

NSF® Certified Lead Free

CG-4109-005	1/2	100	500	173	1.23
CG-4109-007	3/4	50	250	173	1.96
CG-4109-010	1	50	100	173	9.01



90° Stub Out EII - CTS MARINE

Socket x Closed End

NSF® Certified Lead Free

CG-S4106-005	1/2	50	0	173	17.64
--------------	-----	----	---	-----	-------



Part Number	Size	Std Pk	Mstr Ctn	Prod Code	MSRP
-------------	------	--------	----------	-----------	------

45° EII - CTS MARINE

Socket x Socket

NSF® Certified Lead Free

CG-4117-005	1/2	100	500	173	1.31
CG-4117-007	3/4	50	250	173	2.29
CG-4117-010	1	10	100	173	5.80
CG-4117-012	1-1/4	10	100	173	12.30
CG-4117-015	1-1/2	10	100	173	17.83
CG-4117-020	2	10	100	173	37.34



45° Street EII - CTS MARINE

Spigot x Socket

NSF® Certified Lead Free

CG-4127-005	1/2	100	500	173	2.80
CG-4127-007	3/4	50	250	173	3.75
CG-4127-010	1	50	250	173	10.79



Coupling - CTS MARINE

Socket x Socket

NSF® Certified Lead Free

CG-4129-005	1/2	100	1000	173	.85
CG-4129-007	3/4	50	500	173	1.14
CG-4129-010	1	10	100	173	5.09
CG-4129-012	1-1/4	10	100	173	6.58
CG-4129-015	1-1/2	10	100	173	9.30
CG-4129-020	2	10	50	173	17.71



GripLoc™ Coupling - CTS MARINE

WARNING: DO NOT INSERT FINGERS
Grip Socket x Grip Socket -

Uses No Solvent Cement. NSF® Certified Lead Free

CG-GL4129-005	1/2	1	75	173	19.74
CG-GL4129-007	3/4	1	50	173	20.56
CG-GL4129-010	1	12	24	173	26.04

Gripper is 410 Stainless Steel

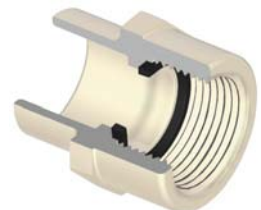


Female Adapter with O-ring Gasket - CTS MARINE

Socket x Thread

For Cold Water Service Only - NSF® Certified Lead Free

CG-4135-005OR	1/2	100	500	173	3.69
CG-4135-007OR	3/4	50	250	173	5.20
CG-4135-010OR	1	10	100	173	6.03





Marine & Offshore Products
CTS CPVC Fittings & Valves - ABS & USCG Approved

CTS CPVC Fittings & Valves - ABS & USCG Approved

Part Number	Size	Std Pk	Mstr Ctn	Prod Code	MSRP
-------------	------	--------	----------	-----------	------

Female Adapter - Special Reinforced - CTS MARINE

Socket x SR Fipt - Stainless Steel Collar

NSF® Certified Lead Free

CG-4135-005SR	1/2	25	200	173	9.96
CG-4135-007SR	3/4	25	300	173	10.95
CG-4135-010SR	1	5	100	173	13.89



Female Adapter - Reducing Special Reinforced - CTS MARINE

Socket x SR Fipt - Stainless Steel Collar

NSF® Certified Lead Free

CG-4135-131SR	1X3/4	25	150	173	19.34
---------------	-------	----	-----	-----	-------



Female Adapter - Stainless Steel Thread Transition - CTS MARINE

Socket x SS Fipt

NSF® Certified Lead Free

CG-4135-005SS	1/2	25	150	173	12.44
CG-4135-007SS	3/4	25	150	173	17.84
CG-4135-010SS	1	25	100	173	29.61
CG-4135-012SS	1-1/4	16	0	173	68.20
CG-4135-015SS	1-1/2	16	0	173	114.44
CG-4135-020SS	2	8	0	173	169.16



Male Adapter - CTS MARINE

Mipt x Socket

For Cold Water Service Only - NSF® Certified Lead Free

CG-4136-005	1/2	100	1000	173	1.09
CG-4136-007	3/4	50	500	173	1.84
CG-4136-010	1	10	100	173	8.73
CG-4136-012	1-1/4	10	100	173	13.50
CG-4136-015	1-1/2	10	100	173	16.66
CG-4136-020	2	10	100	173	27.46



Male Adapter - Spigot - CTS Marine

Mipt xx Spigot

For Cold Water Service Only - NSF® Certified Lead Free

CG-4161-005	1/2	50	700	173	3.51
-------------	-----	----	-----	-----	------



Part Number	Size	Std Pk	Mstr Ctn	Prod Code	MSRP
-------------	------	--------	----------	-----------	------

Male Adapter - Internal Stainless Steel Reinforced - CTS MARINE

R Mipt x Socket - Stainless Steel Sleeve

NSF® Certified Lead Free

CG-4136-005R	1/2	25	300	173	12.78
CG-4136-007R	3/4	25	300	173	14.20
CG-4136-010R	1	10	120	173	21.16



Male Adapter - Transition with Stainless Steel Thread - CTS MARINE

Socket x SS Mipt

NSF® Certified Lead Free

CG-4136-005SS	1/2	25	150	173	12.45
CG-4136-007SS	3/4	25	150	173	19.70
CG-4136-010SS	1	25	0	173	33.34
CG-4136-012SS	1-1/4	16	0	173	66.79
CG-4136-015SS	1-1/2	16	0	173	114.44
CG-4136-020SS	2	8	0	173	125.89



Reducer Bushing - CTS MARINE

Spigot x Socket

NSF® Certified Lead Free

CG-4137-101	3/4X1/2	10	500	173	1.30
CG-4137-130	1X1/2	10	100	173	4.25
CG-4137-131	1X3/4	10	100	173	4.25
CG-4137-166	1-1/4X1/2	10	100	173	5.50
CG-4137-167	1-1/4X3/4	10	100	173	5.50
CG-4137-168	1-1/4X1	10	100	173	5.50
CG-4137-209	1-1/2X1/2	10	100	173	6.93
CG-4137-210	1-1/2X3/4	10	100	173	6.93
CG-4137-211	1-1/2X1	10	100	173	7.26
CG-4137-212	1-1/2X1-1/4	10	100	173	7.55
CG-4137-247	2X1/2	10	50	173	15.74
CG-4137-248	2X3/4	10	50	173	15.74
CG-4137-249	2X1	10	60	173	15.74
CG-4137-250	2X1-1/4	10	50	173	15.74
CG-4137-251	2X1-1/2	10	100	173	15.74



Transition Bushing - CTS MARINE

IPS Spigot x CTS Socket

NSF® Certified Lead Free

CG-4140-005	1/2	10	600	173	5.49
CG-4140-007	3/4	10	100	173	5.74
CG-4140-010	1	10	100	173	6.34
CG-4140-015	1-1/2	10	100	173	9.89
CG-4140-012	1-1/4	10	100	173	7.84
CG-4140-020	2	10	50	173	10.79



Marine & Offshore Products
CTS CPVC Fittings & Valves - ABS & USCG Approved



CTS CPVC Fittings & Valves - ABS & USCG Approved

Part Number	Size	Std Pk	Mstr Ctn	Prod Code	MSRP
-------------	------	--------	----------	-----------	------

Transition Coupling - CTS MARINE

IPS Socket x CTS Socket

NSF® Certified Lead Free

CG-4141-007	3/4	25	300	173	3.93
CG-4147-010	1	10	100	173	4.34



Cap - CTS MARINE

Socket

NSF® Certified Lead Free

CG-4147-005	1/2	100	500	173	.94
CG-4147-007	3/4	50	250	173	1.19
CG-4147-010	1	10	100	173	4.34
CG-4147-012	1-1/4	10	100	173	5.98
CG-4147-015	1-1/2	10	100	173	9.20
CG-4147-020	2	10	50	173	18.56



GripLoc™ Cap - CTS MARINE

**WARNING: DO NOT INSERT FINGERS
Grip Socket**

Uses No Solvent Cement. NSF® Certified Lead Free

CG-GL4147-005	1/2	25	200	173	19.20
CG-GL4147-007	3/4	25	150	173	20.39
CG-GL4147-010	1	10	50	173	22.71

Gripper is 410 Stainless Steel



Union - CTS MARINE

Socket with EPDM O-ring Seal

100 psi Maximum Internal Pressure @ 180°F (82°C) -

NSF® Certified Lead Free

CG-4197-005	1/2	25	150	173	10.00
CG-4197-007	3/4	12	48	173	15.85
CG-4197-010	1	36	0	173	25.99
CG-4197-012	1-1/4	12	48	173	50.73
CG-4197-015	1-1/2	12	0	173	53.90
CG-4197-020	2	6	36	173	84.71



Union - Special Reinforced - CTS MARINE

Socket x SR Fipt - EPDM O-ring Seal, Stainless Steel Collar

100 psi Maximum Internal Pressure @ 180°F (82°C) -

NSF® Certified Lead Free

CG-4199-005SR	1/2	20	120	173	18.24
---------------	-----	----	-----	-----	-------



Part Number	Size	Std Pk	Mstr Ctn	Prod Code	MSRP
-------------	------	--------	----------	-----------	------

Union - Special Reinforced - CTS MARINE (continued)

Socket x SR Fipt - EPDM O-ring Seal, Stainless Steel Collar

CG-4199-007SR	3/4	10	60	173	31.30
CG-4199-010SR	1	10	40	173	51.98

CPVC-PEX Transition Spigot Adapters - CTS MARINE

Spigot x PEX Barb-Crimp Style

CPVC Spigot is also (Socket)

NSF® Certified Lead Free

CG-TPC-005	1/2	25	150	173	30.93
CG-TPC-007	3/4 (1/2)	25	100	173	34.86
CG-TPC-010	1(3/4)	25	50	173	48.43

ASTM F1807 PEX Connector, Stainless Steel



CPVC-PEX Transition Socket Adapters - CTS MARINE

Socket x PEX Barb-Crimp Style

CPVC Socket is also (Spigot)

NSF® Certified Lead Free

CG-TPC-005-S	1/2 (3/4)	25	150	173	30.93
CG-TPC-007-S	3/4(1)	25	100	173	34.86
CG-TPC-010-S	1(1-1/4)	50	300	173	48.43

ASTM F1807 PEX Connector, Stainless Steel



Water Hammer Arrestor - CTS MARINE

Spigot

NSF® Certified Lead Free

CG-WHA-005	1/2	25	100	173	25.15
------------	-----	----	-----	-----	-------



Quarter Turn Angle Supply Stop - Socket - CTS MARINE

Socket x NPT

100 psi @ 180°F (82°C)

Male Thread for Connection to Flexible Supply Line having 1/2"

Female NPT Thread Inlet - NSF® Certified Lead Free

CG-7722-005	1/2	50	400	173	14.09
-------------	-----	----	-----	-----	-------



Quarter Turn Angle Supply Stop - Special Reinforced - CTS MARINE

SR Fipt x NPT

100 psi @ 180°F (82°C)

Male Thread for Connection to Flexible Supply Line having 1/2"

Female NPT Thread Inlet - NSF® Certified Lead Free

CG-7721-005SR	1/2	50	400	179	16.01
---------------	-----	----	-----	-----	-------





CTS CPVC Fittings & Valves - ABS & USCG Approved

Part Number	Size	Std Pk	Mstr Ctn	Prod Code	MSRP
-------------	------	--------	----------	-----------	------

Ball Valve - Commercial - CTS MARINE-

Socket with EPDM O-ring Seal



100 psi Maximum Internal Pressure @ 180°F (82°C)
NSF® Certified Lead Free

CG-1922-005	1/2	25	200	179	23.89
CG-1922-007	3/4	24	0	179	34.64
CG-1922-010	1	25	0	179	44.40
CG-1922-012	1-1/4	8	0	179	75.61
CG-1922-015	1-1/2	6	0	179	105.44
CG-1922-020	2	4	0	179	134.30

CTS CPVC Solvent Cement - ABS & USCG Approved

CTS-5 Solvent Cement - Yellow -CTS MARINE

One-Step (requires no primer)



CTS5-020	Pint	12	0	701	25.74
CTS5-030	Quart	12	0	701	44.79
CTS5-040	Gallon	6	0	701	153.23