



**Schedule 80 CPVC Fittings - ABS & USCG Approved**

Part Number	Size	Std Pk	Mstr Ctn	Prod Code	MSRP
-------------	------	--------	----------	-----------	------



**Fabricated Expansion Joints - CPVC - MARINE**

**12" Travel with FKM O-rings**

1/2" - 2" 235 psi @ 73°F (23°C)  
2-1/2" - 12" 150 psi @ 73°F (23°C)

CG-826-005X12C	1/2	10	0	180	545.99
CG-826-007X12C	3/4	6	0	180	626.11
CG-826-010X12C	1	5	0	180	667.93
CG-826-012X12C	1-1/4	4	0	180	747.59
CG-826-015X12C	1-1/2	4	0	180	838.40
CG-826-020X12C	2	2	0	180	1070.16
CG-826-025X12C	2-1/2	1	0	180	1620.10
CG-826-030X12C	3	1	0	180	1302.00
CG-826-040X12C	4	1	0	180	2156.76
CG-826-060X12C	6	1	0	180	2375.96
CG-826-080X12C	8	1	0	180	4548.99
CG-826-100X12C	10	1	0	180	5329.30
CG-826-120X12C	12	1	0	180	7624.66

**GripLoc™ Coupling - MARINE**

**WARNING: DO NOT INSERT FINGERS**  
**EPDM Gasket**  
**Pressure Rated to 235 psi @ 73°F**



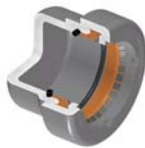
Uses No Solvent Cement.

CG-GL429-005C	1/2	1	40	184	21.10
CG-GL429-007C	3/4	1	36	184	26.04
CG-GL429-010C	1	1	20	184	27.96
CG-GL429-012C	1-1/4	1	15	184	29.60
CG-GL429-015C	1-1/2	1	15	184	29.60
CG-GL429-020C	2	1	10	184	32.90

Gripper is 410 Stainless Steel

**GripLoc™ Cap - MARINE**

**WARNING: DO NOT INSERT FINGERS**  
**EPDM Gasket**  
**Pressure Rated to 235 psi @ 73°F**



Uses No Solvent Cement.

CG-GL447-005C	1/2	25	150	184	18.43
CG-GL447-007C	3/4	1	50	184	23.71
CG-GL447-010C	1	1	50	184	25.96
CG-GL447-012C	1-1/4	1	25	184	35.60
CG-GL447-015C	1-1/2	1	25	184	41.40
CG-GL447-020C	2	1	25	184	47.54

Gripper is 410 Stainless Steel

**Valves - ABS & USCG Approved**

Part Number	Size	Std Pk	Mstr Ctn	Prod Code	MSRP
-------------	------	--------	----------	-----------	------

**True Union 2000 Industrial Ball Valves - EPDM - MARINE**

**Socket**



CG-1829-005C	1/2	1	18	179	90.90
CG-1829-007C	3/4	1	18	179	114.48
CG-1829-010C	1	1	12	179	136.29
CG-1829-012C	1-1/4	1	8	179	216.66
CG-1829-015C	1-1/2	1	8	179	228.83
CG-1829-020C	2	1	4	179	306.03
CG-1822-025C	2-1/2	1	0	179	686.14
CG-1822-030C	3	1	0	179	802.25
CG-1822-040C	4	1	0	179	1453.73
CG-1822-060C	6	1	0	179	3094.75
CG-1822-080C	8	1	0	179	4116.05

1/2" - 4" ABS type approved  
1/2" - 8 USCG applications

**True Union 2000 Industrial Ball Valves - FKM - MARINE**

**Socket**



CG-1839-005C	1/2	1	18	179	101.01
CG-1839-007C	3/4	1	18	179	127.23
CG-1839-010C	1	1	12	179	151.43
CG-1839-012C	1-1/4	1	8	179	240.80
CG-1839-015C	1-1/2	1	8	179	254.25
CG-1839-020C	2	1	4	179	351.80
CG-1832-025C	2-1/2	1	0	179	762.33
CG-1832-030C	3	1	0	179	891.46
CG-1832-040C	4	1	0	179	1615.23
CG-1832-060C	6	1	0	179	3438.39
CG-1832-080C	8	1	0	179	4573.08

1/2" - 4" ABS type approved  
1/2" - 8 USCG applications

**True Union 2000 Standard Ball Valves - EPDM - MARINE**

**Socket**



CG-3629-005C	1/2	1	18	179	72.69
CG-3629-007C	3/4	1	18	179	91.59
CG-3629-010C	1	1	12	179	109.04
CG-3629-012C	1-1/4	1	8	179	173.35
CG-3629-015C	1-1/2	1	8	179	183.05
CG-3629-020C	2	1	4	179	244.84
CG-3622-025C	2-1/2	1	0	179	548.91
CG-3622-030C	3	1	0	179	641.81
CG-3622-040C	4	1	0	179	1162.96



**Valves - ABS & USCG Approved**

Part Number	Size	Std Pk	Mstr Ctn	Prod Code	MSRP
-------------	------	--------	----------	-----------	------

**True Union 2000 Standard Ball Valves - FKM - MARINE**

**Socket**



CG-3639-005C	1/2	1	18	179	80.83
CG-3639-007C	3/4	1	18	179	101.79
CG-3639-010C	1	1	12	179	121.15
CG-3639-012C	1-1/4	1	8	179	192.68
CG-3639-015C	1-1/2	1	8	179	203.40
CG-3639-020C	2	1	4	179	281.46
CG-3632-025C	2-1/2	1	0	179	548.91
CG-3632-030C	3	1	0	179	641.81
CG-3632-040C	4	1	0	179	1162.96

**True Union 2000 Vertical 3-Way Ball Valves, L-Port, EPDM - MARINE**

**Socket**



CG-4722L1-005C	1/2	1	12	179	217.36
CG-4722L1-007C	3/4	1	8	179	255.05
CG-4722L1-010C	1	1	8	179	309.99
CG-4722L1-012C	1-1/4	1	8	179	375.00
CG-4722L1-015C	1-1/2	1	8	179	433.51
CG-4722L1-020C	2	1	4	179	531.91
CG-4722L1-025C	2-1/2	1	0	179	1870.69
CG-4722L1-030C	3	1	0	179	1909.04
CG-4722L1-040C	4	1	0	179	3299.90

USCG Application Only

**True Union 2000 Vertical 3-Way Ball Valves, L-Port, FKM - MARINE**

**Socket**



CG-4732L1-005C	1/2	1	12	179	235.35
CG-4732L1-007C	3/4	1	8	179	277.84
CG-4732L1-010C	1	1	8	179	345.25
CG-4732L1-015C	1-1/2	1	8	179	475.28
CG-4732L1-012C	1-1/4	1	8	179	441.93
CG-4732L1-020C	2	1	4	179	617.54
CG-4732L1-025C	2-1/2	1	0	179	1891.76
CG-4732L1-030C	3	1	0	179	1925.85
CG-4732L1-040C	4	1	0	179	3332.03

USCG Application Only

**True Union 2000 Horizontal 3-Way Diverter Ball Valves, EPDM, T-Port - MARINE**

**Socket**



CG-5022T1-005C	1/2	1	12	179	218.59
CG-5022T1-007C	3/4	1	8	179	260.55
CG-5022T1-010C	1	1	8	179	315.96
CG-5022T1-012C	1-1/4	1	8	179	366.14
CG-5022T1-015C	1-1/2	1	8	179	428.28
CG-5022T1-020C	2	1	0	179	525.43

Made in the U.S.A.

Suitable for Oil-Free air handling to 25 psi, not for distribution of compressed air or gas

Effective 06/26/2017 See MSRP-1 Sheet or Check Spears® On-line Catalog @ [www.spearsmfg.com](http://www.spearsmfg.com) for Pricing

Part Number	Size	Std Pk	Mstr Ctn	Prod Code	MSRP
-------------	------	--------	----------	-----------	------

**True Union 2000 Horizontal 3-Way Diverter Ball Valves, EPDM, T-Port - MARINE (continued)**

**Socket**

CG-5022T1-025C	2-1/2	1	0	179	1771.09
CG-5022T1-030C	3	1	0	179	1807.09
CG-5022T1-040C	4	1	0	179	3272.78

USCG Application Only

**True Union 2000 Horizontal 3-Way Diverter Ball Valves, FKM, T-Port - MARINE**

**Socket**



CG-5032T1-005C	1/2	1	12	179	236.81
CG-5032T1-007C	3/4	1	8	179	280.46
CG-5032T1-010C	1	1	8	179	348.14
CG-5032T1-012C	1-1/4	1	8	179	410.50
CG-5032T1-015C	1-1/2	1	8	179	468.75
CG-5032T1-020C	2	1	0	179	612.35
CG-5032T1-025C	2-1/2	1	0	179	1883.15
CG-5032T1-030C	3	1	0	179	1912.65
CG-5032T1-040C	4	1	0	179	3309.73

USCG Application Only

**True Union 2000 Industrial Ball Check Valves - EPDM - MARINE**

**Socket**



CG-4529-005C	1/2	1	18	179	115.39
CG-4529-007C	3/4	1	18	179	138.10
CG-4529-010C	1	1	18	179	162.95
CG-4529-012C	1-1/4	1	12	179	280.65
CG-4529-015C	1-1/2	1	8	179	280.65
CG-4529-020C	2	1	8	179	374.85
CG-4522-025C	2-1/2	1	0	179	785.51
CG-4522-030C	3	1	0	179	1043.59
CG-4522-040C	4	1	0	179	1723.74
CG-4522-060C	6	1	0	179	3558.85
CG-4522-080C	8	1	0	179	4186.91

1/2" - 4" ABS type approved  
1/2" - 8 USCG applications

**True Union 2000 Industrial Ball Check Valves - FKM - MARINE**

**Socket**



CG-4539-005C	1/2	1	18	179	128.45
CG-4539-007C	3/4	1	18	179	153.48
CG-4539-010C	1	1	18	179	181.04
CG-4539-012C	1-1/4	1	12	179	311.55
CG-4539-015C	1-1/2	1	8	179	311.55
CG-4539-020C	2	1	8	179	417.68
CG-4532-025C	2-1/2	1	0	179	872.75
CG-4532-030C	3	1	0	179	1136.65
CG-4532-040C	4	1	0	179	1916.48
CG-4532-060C	6	1	0	179	3953.78
CG-4532-080C	8	1	0	179	5270.24



**Valves - ABS & USCG Approved**

Part Number	Size	Std Pk	Mstr Ctn	Prod Code	MSRP
-------------	------	--------	----------	-----------	------

**True Union 2000 Industrial Ball Check Valves - FKM - MARINE**

(continued)

**Socket**

1/2" - 4" ABS type approved
1/2" - 8 USCG applications

**Compact 2000 Ball Valves - EPDM - MARINE**

**Socket**

CG-6622-005C	1/2	10	120	179	34.53
CG-6622-007C	3/4	10	80	179	45.54
CG-6622-010C	1	10	0	179	56.91
CG-6622-012C	1-1/4	6	0	179	93.15
CG-6622-015C	1-1/2	5	0	179	115.21
CG-6622-020C	2	8	0	179	150.94

USCG Application Only

**Compact 2000 Ball Valves - FKM - MARINE**

**Socket**

CG-6632-005C	1/2	10	120	179	38.43
CG-6632-007C	3/4	10	80	179	51.18
CG-6632-010C	1	10	0	179	64.00
CG-6632-012C	1-1/4	6	0	179	115.11
CG-6632-015C	1-1/2	5	0	179	128.00
CG-6632-020C	2	8	0	179	169.56

USCG Application Only

**Butterfly Valve, Standard - EPDM - MARINE**

**Lever Handle**

10" & 12" Valve Gear Operated Only

CG-722311-015C	1-1/2	1	0	179	519.26
CG-722311-020C	2	1	0	179	553.44
CG-722311-025C	2-1/2	1	0	179	587.69
CG-722311-030C	3	1	0	179	640.51
CG-722311-040C	4	1	0	179	740.04
CG-722311-060C	6	1	0	179	1094.48
CG-722311-080C	8	1	0	179	1859.31
CG-722321-100C	10	1	0	179	3631.59
CG-722321-120C	12	1	0	179	5130.24

1-1/2" - 6" ABS type approved  
1-1/2" - 12 USCG applications

**Butterfly Valves, Standard - FKM - MARINE**

**Lever Handle**

10" & 12" Valve Gear Operated Only

CG-723311-015C	1-1/2	1	0	179	1050.95
CG-723311-020C	2	1	0	179	1085.15

Part Number	Size	Std Pk	Mstr Ctn	Prod Code	MSRP
-------------	------	--------	----------	-----------	------

**Butterfly Valves, Standard - FKM - MARINE (continued)**

**Lever Handle**

CG-723311-030C	3	1	0	179	1262.34
CG-723311-040C	4	1	0	179	1579.49
CG-723311-060C	6	1	0	179	2524.75
CG-723311-080C	8	1	0	179	4272.14
CG-723321-100C	10	1	0	179	9277.96
CG-723321-120C	12	1	0	179	12060.74

1-1/2" - 6" ABS type approved  
1-1/2" - 12 USCG applications

**Wafer Butterfly Valves -EPDM - MARINE**

**Lever Handle**

10" & 12" Valve Gear Operated Only

CG-752311-020C	2	1	0	179	553.44
CG-752311-025C	2-1/2	1	0	179	587.69
CG-752311-030C	3	1	0	179	640.51
CG-752311-040C	4	1	0	179	740.04
CG-752311-060C	6	1	0	179	1094.48
CG-752311-080C	8	1	0	179	1859.31
CG-752321-100C	10	1	0	179	3631.59
CG-752321-120C	12	1	0	179	5130.24

2" - 6" ABS type approved  
2" - 12 USCG applications

**Wafer Butterfly Valves -FKM - MARINE**

**Lever Handle**

10" & 12" Valve Gear Operated Only

CG-753311-020C	2	1	0	179	1085.15
CG-753311-025C	2-1/2	1	0	179	1178.43
CG-753311-030C	3	1	0	179	1262.34
CG-753311-040C	4	1	0	179	1579.49
CG-753311-060C	6	1	0	179	2524.75
CG-753311-080C	8	1	0	179	4272.14
CG-753321-100C	10	1	0	179	9277.96
CG-753321-120C	12	1	0	179	12060.74

2" - 6" ABS type approved  
2" - 12 USCG applications

**MARINE Solvent Cement & Primer - ABS & USCG Approved**

**Marine-24 Solvent Cement - Gray**

**Requires primer**

CG-MARINE24-030	Quart	12	0	178	60.64
CG-MARINE24-040	Gallon	6	0	178	209.39

