




**Irrigation & Turf Product**  
**PVC 80, 100 & 125 PSI PIP Fabricated Fittings**

**Crosses**

Size	80 PSI	100 PSI	125 PSI
	Prod Code:310 Part Number	Prod Code:320 Part Number	Prod Code:330 Part Number

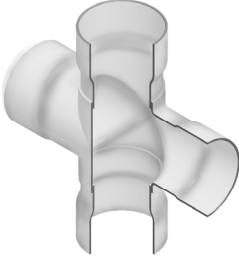
**Cross (Gasket x Gasket x Gasket x Gasket) (continued)**

	24X8	2920-9082 3120.58	3020-9082 3468.63	3320-9082P 4334.80
	24X10	2920-9102 3377.53	3020-9102 3751.98	3320-9102P 4688.87
	24X12	2920-9122 3634.61	3020-9122 4037.34	3320-9122P 5045.31
	24X15	2920-9152 4211.38	3020-9152 4678.82	3320-9152P 5848.73
	24X18	2920-9182 4652.59	3020-9182 5168.58	3320-9182P 6461.76
	24X21	2920-9212 5350.72	3020-9212 5945.69	3320-9212P 7431.11
	27	2920-2702 7673.88	3020-2702 11029.28	3320-2702P 13751.19
	27X4	2920-9342 3382.29	3020-9342 4000.89	3320-9342P 4998.58
	27X6	2920-9362 3630.57	3020-9362 4016.54	3320-9362P 5071.82
	27X8	2920-9382 3891.62	3020-9382 4336.81	3320-9382P 5421.37
	27X10	2920-9402 4221.51	3020-9402 4688.98	3320-9402P 5862.76
	27X12	2920-9422 4543.27	3020-9422 5049.19	3320-9422P 6310.13
	27X15	2920-9452 5263.71	3020-9452 5848.56	3320-9452P 7311.73
	27X18	2920-9482 5816.17	3020-9482 6461.76	3320-9482P 8075.85
	27X21	2920-9512 6688.39	3020-9512 7431.11	3320-9512P 9290.89
	27X24	2920-9542 7240.95	3020-9542 8222.56	3320-9542P 10278.47

**PIP x IPS Crosses**

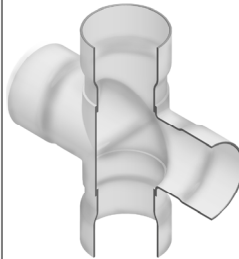
Size	80 PIP	100 PIP	125 PIP
	Prod Code:319 Part Number	Prod Code:329 Part Number	Prod Code:339 Part Number

**PIP x IPS Cross (Socket x Socket x Socket x Socket)**

	6	2920-060PXI 101.82	3020-060PXI 141.09	3320-060PXI 175.58
	8	2920-080PXI 172.97	3020-080PXI 206.12	3320-080PXI 254.14
	8X6	2920-585PXI 122.24	3020-585PXI 241.67	3320-585PXI 192.71
	10	2920-100PXI 293.21	3020-100PXI 354.58	3320-100PXI 411.99
	10X6	2920-626PXI 187.97	300-103700 214.68	3320-626PXI 249.02
	10X8	2920-628PXI 220.24	3020-628PXI 291.83	3320-628PXI 304.34
	12	2920-120PXI 455.16	3020-120PXI 536.17	3320-120PXI 662.04

Size	80 PIP	100 PIP	125 PIP
	Prod Code:319 Part Number	Prod Code:329 Part Number	Prod Code:339 Part Number

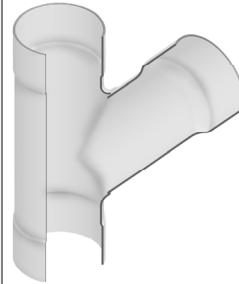
**PIP x IPS Cross (Socket x Socket x Socket x Socket) (continued)**

	12X6	2920-666PXI 267.44	3020-666PXI 296.92	3320-666PXI 345.83
	12X8	2920-668PXI 311.61	3020-668PXI 345.99	3320-668PXI 729.43
	12X10	2920-670PXI 344.81	3020-670PXI 417.15	3320-670PXI 483.92
	15X6	2920-726PXI 342.52	3020-726PXI 422.05	3320-726PXI 454.40
	15X8	2920-728PXI 404.85	3020-728PXI 483.40	3320-728PXI 620.48
	15X10	2920-730PXI 468.23	3020-730PXI 601.16	3320-730PXI 751.95
	15X12	2920-732PXI 551.28	3020-732PXI 703.03	3320-732PXI 859.17
	18X6	2920-786PXI 531.23	3020-786PXI 630.63	3320-786PXI 879.68
	18X8	2920-788PXI 553.57	3020-788PXI 689.54	3320-788PXI 936.47
	18X10	2920-790PXI 650.25	3020-790PXI 747.17	3320-790PXI 1074.89
	18X12	2920-792PXI 759.46	3020-792PXI 923.86	3320-792PXI 1217.92
	21X6	2920-846PXI 875.21	3020-846PXI 1055.17	3320-846PXI 1195.96
	21X8	2920-848PXI 903.01	3020-848PXI 1143.51	3320-848PXI 1321.72
	21X10	2920-850PXI 976.61	3020-850PXI 1260.05	3320-850PXI 1460.12
	21X12	2920-852PXI 1027.61	3020-852PXI 1406.08	3320-852PXI 1625.05
	24X6	2920-906PXI 1186.43	3020-906PXI 1374.16	3320-906PXI 1349.40
	24X8	2920-908PXI 1260.05	3020-908PXI 1494.43	3320-908PXI 1487.78
	24X10	2920-910PXI 1348.39	3020-910PXI 1612.21	3320-910PXI 1652.71
	24X12	2920-912PXI 1464.93	3020-912PXI 1787.67	3320-912PXI 1817.67

**Wyes**

Size	80 PSI	100 PSI	125 PSI
	Prod Code:310 Part Number	Prod Code:320 Part Number	Prod Code:330 Part Number

**Wyes (Socket x Socket x Socket)**

	6	2975-060 193.72	---	---
	6X4	2975-532 108.97	---	---
	8	2975-080 205.64	---	---
	8X4	2975-582 178.48	---	---
	8X6	2975-585 290.84	---	---

**Irrigation & Turf Product**  
**PVC 80, 100 & 125 PSI PIP Fabricated Fittings**

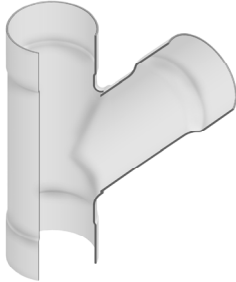


**Wyes**

Size	80 PSI	100 PSI	125 PSI
	Prod Code:310 Part Number	Prod Code:320 Part Number	Prod Code:330 Part Number

**Wyes (Socket x Socket x Socket) (continued)**

10	2975-100 323.82	---	---
10X4	2975-624 198.36	---	---
10X6	2975-626 208.63	---	---
10X8	2975-628 266.78	---	---
12	2975-120 463.55	---	---
12X4	2975-664 235.29	---	---
12X6	2975-666 257.32	---	---
12X8	2975-668 290.76	---	---
12X10	2975-670 310.29	---	---
15	2975-150 928.65	---	---
15X4	2975-724 373.21	---	---
15X6	2975-726 399.42	---	---
15X8	2975-728 483.19	---	---
15X10	2975-730 519.02	---	---
15X12	2975-732 717.49	---	---
18	2975-187 1356.41	---	---
18X4	2975-784 585.98	---	---
18X6	2975-786 621.27	---	---
18X8	2975-788 686.02	---	---
18X10	2975-790 715.55	---	---
18X12	2975-792 938.63	---	---
18X15	2975-795 1176.62	---	---



**Surface Reducers**

Size	80 PSI	100 PSI	125 PSI
	Prod Code:310 Part Number	Prod Code:320 Part Number	Prod Code:330 Part Number

**Surface Reducer (Socket)**

6X2	---	300-102013 49.05	---
6X3	---	300-102015 49.05	---
8X2	---	300-102018 92.00	---
8X3	---	300-102020 92.00	---
8X4	---	300-102021 92.00	---
10X2	---	300-102024 116.59	---
10X3	---	300-102026 116.59	---
10X4	---	300-102027 116.59	---
10X6	---	300-102028 116.59	---
12X2	---	300-102031 171.75	---
12X3	---	300-102033 171.75	---
12X4	---	300-102034 171.75	---
12X6	---	300-102035 171.75	---
12X8	---	300-102036 171.75	---
15X2	---	300-102048 312.75	---
15X3	---	300-102050 312.75	---
15X4	---	300-102051 312.75	---
15X6	---	300-102052 312.75	---
15X8	---	300-102053 312.75	---
15X10	---	300-102054 312.75	---
18X2	---	300-102067 472.38	---
18X3	---	300-102069 472.38	---
18X4	---	300-102070 472.38	---
18X6	---	300-102071 472.38	---
18X8	---	300-102072 472.38	---
18X10	---	300-102073 472.38	---

