



Irrigation & Turf Product

PVC 80, 100 & 125 PSI PIP Fabricated Fittings

Couplings

	Size	80 PSI	100 PSI	125 PSI
		Prod Code:310	Prod Code:320	Prod Code:330
		Part Number	Part Number	Part Number

PIP Repair Coupling (Gasket x Gasket)

	6	2928-060 108.85	3028-060 123.69	3328-060P 141.36
	8	2928-080 152.48	3028-080 175.34	3328-080P 210.66
	10	2928-100 263.24	3028-100 281.44	3328-100P 331.96
	12	2928-120 367.19	3028-120 386.09	3328-120P 459.66
	15	2928-150 547.86	3028-150 575.09	3328-150P 696.03
	18	2928-180 912.82	3028-180 1052.24	3328-180P 1449.01
	21	2928-210 1261.31	3028-210 1514.26	3328-210P 2036.06
	24	2928-240 1748.58	3028-240 2099.64	3328-240P 2847.79
	27	2928-270 2239.35	3028-270 2795.46	3328-270P 3558.60

	Size	80 PSI	100 PSI	125 PSI
		Prod Code:310	Prod Code:320	Prod Code:330
		Part Number	Part Number	Part Number

PIP Coupling (Socket x Socket)

	6	290-100002 32.62	300-100002 36.73	3329-060P 48.66
	8	290-100003 40.77	300-100003 50.26	3329-080P 61.88
	10	290-100004 67.96	300-100004 80.21	3329-100P 99.02
	12	290-100005 101.94	300-100005 123.69	3329-120P 160.77
	15	290-100006 154.96	300-100006 212.04	3329-150P 241.54
	18	290-100007 354.81	300-100007 445.92	3329-180P 543.71
	21	290-100009 471.73	300-100009 778.98	3329-210P 879.51
	24	290-100010 827.88	300-100010 1038.62	3329-240P 1057.75
	27	2929-270 1003.61	3029-270 1250.39	3329-270P 1931.49
	30	2929-300 1316.28	3029-300 2030.54	---

PIP Coupling (Gasket x Spigot)

	6	290-100068 67.96	300-100068 72.03	3329-06023P 90.14
	8	290-100069 103.27	300-100069 111.45	3329-08023P 142.68
	10	290-100070 153.60	300-100070 163.08	3329-10023P 211.88
	12	290-100071 188.93	300-100071 221.57	3329-12023P 278.11
	15	290-100072 292.24	300-100072 441.80	3329-15023P 513.89

	Size	80 PSI	100 PSI	125 PSI
		Prod Code:310	Prod Code:320	Prod Code:330
		Part Number	Part Number	Part Number

PIP Coupling (Gasket x Spigot) (continued)

	18	290-100073 490.77	300-100073 884.96	3329-18023P 676.15
	21	290-100075 717.82	300-100075 1167.78	3329-21023P 1030.40
	24	2929-24023 876.85	3029-24023 1167.75	3329-24023P 1459.13
	27	2929-27023 1138.64	3029-27023 1423.14	3329-27023P 1779.23

PIP Coupling (Gasket x Gasket)

	6	290-100090 81.56	300-100090 91.03	3329-0602P 117.81
	8	290-100091 149.53	300-100091 168.73	3329-0802P 193.48
	10	290-100092 191.35	300-100092 214.78	3329-1002P 284.47
	12	290-100093 240.64	300-100093 314.33	3329-1202P 316.43
	15	290-100094 387.41	300-100094 577.75	3329-1502P 600.84
	18	290-100095 647.09	300-100095 682.48	3329-1802P 853.24
	21	290-100097 808.88	300-100097 1103.87	3329-2102P 1255.85
	24	2929-2402 1358.17	3029-2402 1469.46	3329-2402P 1763.64
	27	2929-2702 1565.21	3029-2702 1836.83	3329-2702P 2297.08

Reducer Couplings

	Size	80 PSI	100 PSI	125 PSI
		Prod Code:310	Prod Code:320	Prod Code:330
		Part Number	Part Number	Part Number

Reducer Coupling (Socket x Socket)

	6X2	2929-528 69.52	3029-528 123.21	---
	6X2-1/2	---	3029-529 102.85	---
	6X3	---	3029-530 107.34	---
	6X4	2929-532 40.16	3029-532 44.85	3329-532P 47.83
	8X2	2929-578 173.46	---	---
	8X2-1/2	---	3029-579 179.41	---
	8X3	---	3029-580 188.05	---
	8X4	2929-582 114.18	300-100927 122.52	3329-582P 142.54

Irrigation & Turf Product
PVC 80, 100 & 125 PSI PIP Fabricated Fittings

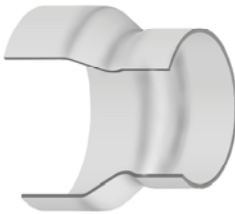


Reducer Couplings

	Size	80 PSI	100 PSI	125 PSI
		Prod Code:310	Prod Code:320	Prod Code:330
		Part Number	Part Number	Part Number

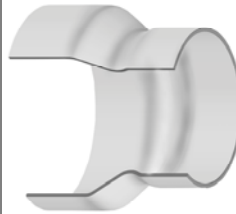
Reducer Coupling (Socket x Socket) (continued)

8X6	2929-585 59.44	300-100928 69.34	3329-585P 80.38
10X2	2929-621 205.05	3029-621 252.55	---
10X2-1/2	---	3029-622 207.49	---
10X3	---	3029-623 148.12	---
10X4	2929-624 157.07	3029-624 182.14	3329-624P 200.16
10X6	2929-626 129.87	300-100930 142.68	3329-626P 140.19
10X8	2929-628 81.65	300-100931 95.13	3329-628P 177.75
12X2	---	3029-661 504.82	---
12X2-1/2	---	3029-662 344.94	---
12X3	---	3029-663 312.40	---
12X4	2929-664 225.44	3029-664 235.14	3329-664P 342.87
12X6	2929-666 206.72	300-100933 220.24	3329-666P 317.57
12X8	2929-668 144.04	300-100934 152.67	3329-668P 277.97
12X10	2929-670 118.96	300-100935 137.29	3329-670P 262.24
15X2	2929-721 514.88	---	---
15X3	2929-723 468.63	3029-723 540.08	---
15X4	2929-724 486.06	3029-724 520.12	3329-724P 616.42
15X6	2929-726 459.54	3029-726 491.71	3329-726P 535.02
15X8	2929-728 431.24	3029-728 465.76	3329-728P 501.96
15X10	2929-730 297.54	3029-730 372.47	3329-730P 405.14
15X12	2929-732 192.06	300-100940 221.57	3329-732P 382.23
18X4	2929-784 945.88	3029-784 1062.16	3329-784P 1124.96
18X6	2929-786 985.12	3029-786 1039.31	3329-786P 1101.55
18X8	2929-788 908.13	3029-788 962.61	3329-788P 1030.01



Reducer Coupling (Socket x Socket) (continued)

Size	80 PSI	100 PSI	125 PSI
	Prod Code:310	Prod Code:320	Prod Code:330
	Part Number	Part Number	Part Number
18X10	2929-790 584.40	3029-790 630.11	3329-790P 712.06
18X12	2929-792 572.89	3029-792 591.87	3329-792P 671.07
18X15	2929-795 344.27	300-100946 403.75	3329-795P 490.77
21X3	2929-843 1175.54	---	---
21X4	2929-844 1201.42	3029-844 1266.29	3329-844P 1367.61
21X6	2929-846 1150.96	3029-846 1220.00	3329-846P 1299.32
21X8	2929-848 960.58	3029-848 1009.01	3329-848P 1035.53
21X10	2929-850 889.81	3029-850 939.64	3329-850P 971.49
21X12	2929-852 895.97	3029-852 860.55	3329-852P 912.19
21X15	2929-855 788.87	3029-855 836.12	3329-855P 1002.58
21X18	2929-858 474.85	300-100960 556.00	3329-858P 697.44
24X3	2929-903 1865.99	3029-903 1126.80	---
24X6	2929-906 1905.74	3029-906 2032.38	3329-906P 2215.28
24X8	2929-908 1808.08	3029-908 1896.12	3329-908P 1999.77
24X10	2929-910 1721.15	3029-910 1814.08	3329-910P 1947.93
24X12	2929-912 1506.51	3029-912 1596.47	3329-912P 2230.02
24X15	2929-915 1096.02	3029-915 1183.71	3329-915P 1198.37
24X18	2929-918 1039.99	3029-918 1112.78	3329-918P 1188.00
24X21	2929-921 703.95	300-100969 818.39	3329-921P 995.12
27X6	2929-936 2477.86	---	3329-936P 2856.91
27X8	2929-938 2304.77	3029-938 2501.72	3329-938P 2671.49
27X10	2929-940 2160.84	3029-940 2302.19	3329-940P 2460.93
27X12	2929-942 2030.12	3029-942 2151.94	3329-942P 2323.74
27X15	2929-945 1599.18	3029-945 1708.78	3329-945P 1823.35
27X18	2929-948 1500.16	3029-948 1604.48	3329-948P 1688.78
27X21	2929-951 1244.17	3029-951 1490.14	3329-951P 1593.19
27X24	2929-954 967.71	3029-954 1206.83	3329-954P 1504.93
30X18	2929-978 2994.18	3029-978 3311.80	---





Reducer Couplings

	Size	80 PSI	100 PSI	125 PSI
		Prod Code:310	Prod Code:320	Prod Code:330
		Part Number	Part Number	Part Number

Reducer Coupling (Socket x Socket) (continued)

	30X21	---	3029-981 3155.01	---
	30X24	---	3029-984 2814.37	---
	30X27	---	3029-987 2393.92	---

Reducer Coupling (Gasket x Spigot)

	6X4	2929-53223 96.80	300-101310 99.22	3329-53223P 141.48
	8X4	2929-58223 219.84	300-100927 122.52	3329-58223P 274.13
	8X6	2929-58523 116.51	300-101312 141.36	3329-58523P 183.57
	10X4	2929-62423 321.34	3029-62423 350.27	3329-62423P 384.91
	10X6	2929-62623 249.76	300-100930 142.68	3329-62623P 313.19
	10X8	2929-62823 189.91	300-101315 203.91	3329-62823P 280.56
	12X4	2929-66423 433.53	3029-66423 452.18	3329-66423P 527.68
	12X6	2929-66623 397.52	300-100933 220.24	3329-66623P 610.71
	12X8	2929-66823 277.00	300-100934 152.67	3329-66823P 534.57
	12X10	2929-67023 265.98	300-101319 299.09	3329-67023P 365.27
	15X4	2929-72423 934.76	3029-72423 1000.20	3329-72423P 1261.08
	15X6	2929-72623 883.72	3029-72623 945.57	3329-72623P 967.17
	15X8	2929-72823 829.33	3029-72823 895.71	3329-72823P 950.95
	15X10	2929-73023 572.17	3029-73023 716.29	3329-73023P 830.64
	15X12	2929-73223 457.15	300-101324 497.56	3329-73223P 642.19
	18X4	2929-78423 1935.12	3029-78423 2042.61	3329-78423P 2163.37
	18X6	2929-78623 1894.46	3029-78623 1998.66	3329-78623P 2118.34
	18X8	2929-78823 1746.25	3029-78823 1851.16	3329-78823P 1980.77
	18X10	2929-79023 1123.83	3029-79023 1211.77	3329-79023P 1369.36
	18X12	2929-79223 1101.75	3029-79223 1138.22	3329-79223P 1290.52
18X15	2929-79523 805.17	300-101330 946.23	3329-79523P 981.52	

	Size	80 PSI	100 PSI	125 PSI
		Prod Code:310	Prod Code:320	Prod Code:330
		Part Number	Part Number	Part Number

Reducer Coupling (Gasket x Spigot) (continued)

	21X6	2929-84623 2213.36	3029-84623 2346.24	3329-84623P 2498.68
	21X8	2929-84823 1921.15	3029-84823 1939.63	3329-84823P 1991.39
	21X10	2929-85023 1711.19	3029-85023 1807.00	3329-85023P 1868.23
	21X12	2929-85223 1591.38	3029-85223 1654.89	3329-85223P 1754.20
	21X15	2929-85523 1517.06	3029-85523 1607.93	3329-85523P 1708.12
	21X18	2929-85823 1192.35	300-101344 1511.96	3329-85823P 1612.35
	24X6	2929-90623 3664.87	3029-90623 3908.41	3329-90623P 4259.53
	24X8	2929-90823 3477.09	3029-90823 3646.36	3329-90823P 3845.71
	24X10	2929-91023 3309.89	3029-91023 3487.84	3329-91023P 3745.99
	24X12	2929-91223 2897.11	3029-91223 3069.00	3329-91223P 3278.89
	24X15	2929-91523 2107.74	3029-91523 2276.37	3329-91523P 2979.64
	24X18	2929-91823 1999.97	3029-91823 2245.57	3329-91823P 2836.25
	24X21	2929-92123 1779.27	3029-92123 2207.82	3329-92123P 2704.25
	27X6	2929-93623 4765.12	3029-93623 5087.07	3329-93623P 5493.23
	27X8	2929-93823 4432.00	3029-93823 4810.38	3329-93823P 5135.29
	27X10	2929-94023 4155.46	3029-94023 4440.27	3329-94023P 4731.71
	27X12	2929-94223 3901.62	3029-94223 4137.68	3329-94223P 4467.69
	27X15	2929-94523 3074.08	3029-94523 3284.78	3329-94523P 3901.62
	27X18	2929-94823 2876.07	3029-94823 3084.23	3329-94823P 3773.88
	27X21	2929-95123 2543.54	3029-95123 2863.38	3329-95123P 3721.39
	27X24	2929-95423 2490.81	3029-95423 3131.96	3329-95423P 3682.29

Reducer Coupling (Spigot x Gasket)

	6X4	2929-53232 92.19	300-101383 95.57	3329-53232P 122.98
	8X4	2929-58232 211.06	3029-58232 226.20	3329-58232P 263.17
	8X6	2929-58532 111.85	300-101385 133.19	3329-58532P 142.13
	10X4	2929-62432 308.48	3029-62432 336.25	3329-62432P 369.52
	10X6	2929-62632 239.76	3029-62632 263.42	3329-62632P 300.67
	10X8	2929-62832 175.77	300-101388 198.72	3329-62832P 253.80

Irrigation & Turf Product
PVC 80, 100 & 125 PSI PIP Fabricated Fittings



Reducer Couplings

	Size	80 PSI	100 PSI	125 PSI
		Prod Code:310	Prod Code:320	Prod Code:330
		Part Number	Part Number	Part Number

Reducer Coupling (Spigot x Gasket) (continued)

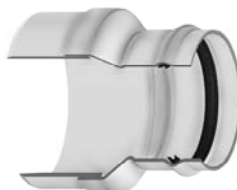
12X4	2929-66432 416.20	3029-66432 434.09	3329-66432P 513.45
12X6	2929-66632 381.61	3029-66632 406.61	3329-66632P 586.27
12X8	2929-66832 265.93	3029-66832 307.21	3329-66832P 513.07
12X10	2929-67032 254.28	300-101392 281.44	3329-67032P 358.96
15X4	2929-72432 897.35	3029-72432 960.19	3329-72432P 1210.65
15X6	2929-72632 848.36	3029-72632 907.77	3329-72632P 987.75
15X8	2929-72832 796.18	3029-72832 859.86	3329-72832P 912.89
15X10	2929-73032 549.17	3029-73032 687.63	3329-73032P 797.41
15X12	2929-73232 373.41	300-101397 435.04	3329-73232P 617.18
18X4	2929-78432 1857.72	3029-78432 1960.91	3329-78432P 2076.84
18X6	2929-78632 1818.67	3029-78632 1918.69	3329-78632P 2033.62
18X8	2929-78832 1676.40	3029-78832 1777.11	3329-78832P 1901.54
18X10	2929-79032 1078.61	3029-79032 1163.28	3329-79032P 1314.59
18X12	2929-79232 1057.66	3029-79232 1092.69	3329-79232P 1238.91
18X15	2929-79532 732.13	300-101403 841.51	3329-79532P 944.88
21X6	2929-84632 2124.83	3029-84632 2252.40	3329-84632P 2398.73
21X8	2929-84832 1844.29	3029-84832 1862.04	3329-84832P 1964.79
21X10	2929-85032 1616.35	3029-85032 1734.72	3329-85032P 1793.51
21X12	2929-85232 1527.75	3029-85232 1588.69	3329-85232P 1682.73
21X15	2929-85532 1456.38	3029-85532 1543.44	3329-85532P 1639.75
21X18	2929-85832 1124.94	300-101417 1268.39	3329-85832P 1472.36
24X6	2929-90632 3518.27	3029-90632 3752.06	3329-90632P 4089.25
24X8	2929-90832 3338.02	3029-90832 3500.49	3329-90832P 3691.87
24X10	2929-91032 3177.49	3029-91032 3348.34	3329-91032P 3596.29
24X12	2929-91232 2781.51	3029-91232 2946.24	3329-91232P 3147.73
24X15	2929-91532 2023.73	3029-91532 2187.11	3329-91532P 2860.46



	Size	80 PSI	100 PSI	125 PSI
		Prod Code:310	Prod Code:320	Prod Code:330
		Part Number	Part Number	Part Number

Reducer Coupling (Spigot x Gasket) (continued)

24X18	2929-91832 1919.97	3029-91832 2155.75	3329-91832P 2721.94
24X21	2929-92132 1750.88	3029-92132 2108.58	3329-92132P 2345.07
27X6	2929-93632 4574.49	3029-93632 4883.78	3329-93632P 5273.51
27X8	2929-93832 4254.73	3029-93832 4617.66	3329-93832P 4925.44
27X10	2929-94032 3989.14	3029-94032 4262.67	3329-94032P 4542.43
27X12	2929-94232 3745.55	3029-94232 3972.20	3329-94232P 4289.00
27X15	2929-94532 2951.32	3029-94532 3153.38	3329-94532P 3744.57
27X18	2929-94832 2761.03	3029-94832 2960.86	3329-94832P 3622.92
27X21	2929-95132 2441.78	3029-95132 2748.84	3329-95132P 3357.91
27X24	2929-95432 2446.91	3029-95432 2930.72	3329-95432P 3534.22



Reducer Coupling (Gasket x Gasket)

6X4	2929-5322 112.12	300-101456 133.19	3329-5322P 169.33
8X4	2929-5822 251.15	3029-5822 269.19	3329-5822P 313.15
8X6	2929-5852 141.80	300-101458 175.34	3329-5852P 217.94
10X4	2929-6242 367.08	3029-6242 400.15	3329-6242P 438.24
10X6	2929-6262 285.77	3029-6262 313.48	3329-6262P 357.82
10X8	2929-6282 248.79	300-101461 281.44	3329-6282P 351.77
12X4	2929-6642 495.28	3029-6642 516.80	3329-6642P 543.85
12X6	2929-6662 454.12	3029-6662 483.86	3329-6662P 697.66
12X8	2929-6682 370.11	3029-6682 431.99	3329-6682P 610.56
12X10	2929-6702 334.20	300-101465 386.09	3329-6702P 486.37
15X4	2929-7242 1069.19	3029-7242 1142.77	3329-7242P 1440.75
15X6	2929-7262 1009.55	3029-7262 1080.24	3329-7262P 1176.52
15X8	2929-7282 947.43	3029-7282 1023.24	3329-7282P 1086.35
15X10	2929-7302 653.40	3029-7302 797.65	3329-7302P 948.93
15X12	2929-7322 493.03	300-101470 561.45	3329-7322P 701.47
18X4	2929-7842 2210.11	3029-7842 2333.45	3329-7842P 2470.87
18X6	2929-7862 2164.21	3029-7862 2283.25	3329-7862P 2420.00






Reducer Couplings

	Size	80 PSI	100 PSI	125 PSI
		Prod Code:310	Prod Code:320	Prod Code:330
		Part Number	Part Number	Part Number

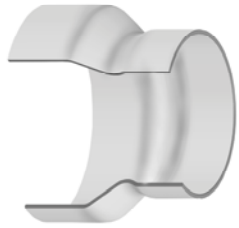
Reducer Coupling (Gasket x Gasket) (continued)

	18X8	2929-7882 1994.92	3029-7882 2114.77	3329-7882P 2262.86
	18X10	2929-7902 1283.55	3029-7902 1384.31	3329-7902P 1564.36
	18X12	2929-7922 1258.56	3029-7922 1300.31	3329-7922P 1474.98
	18X15	2929-7952 880.84	300-101476 981.52	3329-7952P 1121.55
	21X6	2929-8462 2528.51	3029-8462 2680.35	3329-8462P 2854.48
	21X8	2929-8482 2194.73	3029-8482 2214.82	3329-8482P 2337.34
	21X10	2929-8502 1923.45	3029-8502 2064.03	3329-8502P 2134.73
	21X12	2929-8522 1818.03	3029-8522 1890.55	3329-8522P 2002.78
	21X15	2929-8552 1732.59	3029-8552 1836.25	3329-8552P 1950.94
	21X18	2929-8582 1442.01	300-101489 1543.04	3329-8582P 1717.05
	24X6	2929-9062 4186.18	3029-9062 4465.78	3329-9062P 4864.77
	24X8	2929-9082 3972.56	3029-9082 4165.60	3329-9082P 4393.33
	24X10	2929-9102 3780.91	3029-9102 3983.55	3329-9102P 4029.13
	24X12	2929-9122 3309.67	3029-9122 3506.03	3329-9122P 3746.35
	24X15	2929-9152 2408.03	3029-9152 2602.65	3329-9152P 3403.93
	24X18	2929-9182 2351.25	3029-9182 2565.12	3329-9182P 3238.98
	24X21	2929-9212 2323.63	3029-9212 2536.82	3329-9212P 3216.29
	27X6	2929-9362 5444.39	3029-9362 5764.83	3329-9362P 6275.34
	27X8	2929-9382 5064.25	3029-9382 5494.66	3329-9382P 5860.65
	27X10	2929-9402 4746.95	3029-9402 5072.12	3329-9402P 5405.12
	27X12	2929-9422 4456.31	3029-9422 4726.53	3329-9422P 5103.54
	27X15	2929-9452 3512.29	3029-9452 3751.07	3329-9452P 4454.79
	27X18	2929-9482 3284.56	3029-9482 3523.31	3329-9482P 4310.27
	27X21	2929-9512 3037.97	3029-9512 3401.97	3329-9512P 4250.58
	27X24	2929-9542 2930.69	3029-9542 3252.48	3329-9542P 4145.11

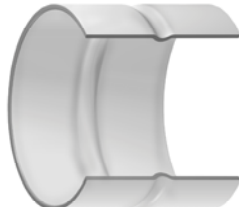
PIP x IPS Adapters & Couplings

	Size	80 PSI	100 PSI	125 PSI
		Prod Code:319	Prod Code:329	Prod Code:339
		Part Number	Part Number	Part Number


PIP X IPS Reducer (Socket)

	6X4	2929-532 40.16	---	3329-532P 47.83
	8X6	---	300-101537 52.99	---
	10X6	---	3029-626PXI 163.29	---
	10X8	---	300-101538 120.49	---
	12X10	---	300-101539 145.42	---
	15X10	---	300-101541 367.04	---
	15X12	---	300-101540 250.14	---
	Size	80 PSI Prod Code:319 Part Number	100 PSI Prod Code:329 Part Number	125 PSI Prod Code:339 Part Number

IPS x PIP Adapter (Socket x Socket)

	6	---	300-101649 43.46	---
	8	---	300-101650 62.48	---
	10	---	300-101651 104.68	---
	12	---	300-101652 163.08	---

IPS x PIP Adapter (Gasket x Gasket)

	6	---	300-101747 105.99	---
	8	---	300-101748 173.02	---
	10	---	300-101749 248.84	---
	12	---	300-101750 350.74	---