


**Irrigation & Turf Product**  
**PVC 80, 100 & 125 PSI PIP Fabricated Fittings**



**Eccentric Stub Surface Reducer**

Size	80 PSI	100 PSI	125 PSI
	Prod Code: 310 Part Number	Prod Code: 320 Part Number	Prod Code: 330 Part Number


**Eccentric Stub Surface Reducer (Socket) (continued)**

	24X2	---	3040-901E 942.36	---
	24X3	---	3040-903E 949.53	---
	24X6	---	3040-906E 1100.26	---
	24X8	---	3040-908E 1120.81	---
	24X10	---	3040-910E 1141.86	---
	24X12	---	3040-912E 1176.93	---
	24X15	---	3040-915E 1233.36	---
	24X18	---	3040-918E 1326.72	---
	27X3	---	3040-933E 1728.89	---
	27X4	---	3040-934E 1730.18	---
	27X6	---	3040-936E 1741.54	---
	27X8	---	3040-938E 1762.08	---
	27X10	---	3040-940E 1783.12	---
	27X12	---	3040-942E 1818.22	---
	27X15	---	3040-945E 1874.61	---
	27X18	---	3040-948E 1967.98	---
	27X21	---	3040-951E 2107.58	---
	27X24	---	3040-954E 4583.32	---

**Glue-On Saddles**


Size	80 PSI	100 PSI	125 PSI
	Prod Code:310 Part Number	Prod Code:320 Part Number	Prod Code:330 Part Number

**Saddle (Socket)**

	6X2	---	300-101789 64.56	---
	6X3	---	300-101797 77.48	---
	6X4	---	300-101804 90.37	---
	8X2	---	300-101790 64.56	---
	8X3	---	300-101798 77.48	---

Size	80 PSI	100 PSI	125 PSI
	Prod Code:310 Part Number	Prod Code:320 Part Number	Prod Code:330 Part Number

**Saddle (Socket) (continued)**

	8X4	---	300-101805 90.37	---
	8X6	---	300-101811 103.31	---
	10X2	---	300-101791 104.95	---
	10X3	---	300-101799 77.48	---
	10X4	---	300-101806 90.37	---
	10X6	---	300-101812 103.31	---
	10X8	---	300-101817 116.22	---
	12X2	---	300-101792 64.56	---
	12X3	---	300-101800 77.48	---
	12X4	---	300-101807 90.37	---
	12X6	---	300-101813 103.31	---
	12X8	---	300-101818 116.22	---
	12X10	---	300-101822 129.11	---
	15X2	---	300-101793 64.56	---
	15X3	---	300-101801 93.27	---
	15X4	---	300-101808 90.37	---
	15X6	---	300-101814 103.31	---
	15X8	---	300-101819 116.22	---
	15X10	---	300-101823 129.11	---
	15X12	---	300-101826 179.60	---
	18X2	---	300-101794 64.56	---
	18X3	---	300-101802 138.54	---
	18X4	---	300-101809 176.65	---
	18X6	---	300-101815 213.31	---
	18X8	---	300-101820 227.88	---
	18X10	---	300-101824 262.34	---
	18X12	---	300-101827 276.60	---
	18X15	---	300-101829 423.17	---



Irrigation & Turf Product

**PVC 80, 100 & 125 PSI PIP Fabricated Fittings & Pipe Flanges**

**Glue-On Saddles**

Size	80 PSI	100 PSI	125 PSI
	Prod Code:310 Part Number	Prod Code:320 Part Number	Prod Code:330 Part Number

**Saddle (Socket) (continued)**

NOTE: When assembling Spears® Saddles to PVC pipe, Spears® Manufacturing Company recommends Spears® PVC-19 Solvent Cement and Primer-68 or Primer -70, or equivalent. Although good connections may be accomplished without Saddle Straps, Spears® Manufacturing Company recommends the use of a clamp or strap device during the assembly step to insure good compression between the pipe and fitting surfaces as the solvent cures. PVC Fabricated Saddle connections are designed for use in low pressure open ended systems and are not intended for use in high pressure applications. For further details, contact Spears® Technical Services Department. Also applies to stub saddles.

Size	80 PSI	100 PSI	125 PSI
	Prod Code:310 Part Number	Prod Code:320 Part Number	Prod Code:330 Part Number

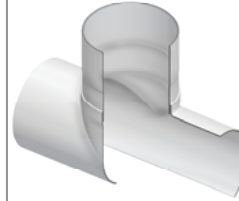
**Stub Saddle (Socket)**

6X2	---	300-101884 90.37	---
6X3	---	300-101892 99.45	---
6X4	---	300-101899 114.91	---
8X2	---	300-101885 90.37	---
8X3	---	300-101893 99.45	---
8X4	---	300-101900 114.91	---
8X6	---	300-101906 142.05	---
10X2	---	300-101886 90.37	---
10X3	---	300-101894 99.45	---
10X4	---	300-101901 114.91	---
10X6	---	300-101907 142.05	---
10X8	---	300-101912 185.99	---
12X2	---	300-101887 90.37	---
12X3	---	300-101895 99.45	---
12X4	---	300-101902 114.91	---
12X6	---	300-101908 142.05	---
12X8	---	300-101913 185.99	---
12X10	---	300-101917 201.44	---
15X2	---	300-101888 130.43	---
15X3	---	300-101896 144.60	---

Size	80 PSI	100 PSI	125 PSI
	Prod Code:310 Part Number	Prod Code:320 Part Number	Prod Code:330 Part Number

**Stub Saddle (Socket) (continued)**

15X4	---	300-101903 151.11	---
15X6	---	300-101909 156.24	---
15X8	---	300-101914 185.99	---
15X10	---	300-101918 214.36	---
15X12	---	300-101921 282.81	---
18X2	---	300-101889 213.07	---
18X3	---	300-101897 218.25	---
18X4	---	300-101904 263.42	---
18X6	---	300-101910 335.78	---
18X8	---	300-101915 359.03	---
18X10	---	300-101919 413.29	---
18X12	---	300-101922 476.60	---
18X15	---	300-101924 666.40	---



**Pipe Flanges**

Part Number	Size	Std Pk	Mstr Ctn	Prod Code	MSRP
-------------	------	--------	----------	-----------	------

**Flange Van Stone Style -PIP**

**Flange x PIP Socket**



125 psi Maximum Internal Pressure Rating @ 73°F (23°C)

354-060F	6X6.140	1	4	320	140.71
354-080F	8X8.160	1	2	320	213.07
354-100F	10X10.200	1	2	320	299.59
354-120F	12X12.240	1	2	320	433.91
354-150F	14X15.300	1	0	320	1156.59
354-151F	16X15.300	1	0	320	1319.43
354-182F	18X18.360	1	0	320	2004.43
354-181F	18X18.701	1	0	320	2004.43
354-201F	20X22.047	1	0	320	3053.17
354-241F	24X24.803	1	0	320	4471.28

For more information, refer to 80, 100 & 125 psi PIP Fabrication Fittings.

PIP = Plastic Irrigation Pipe (dimensions are NOT the same as IPS dimensions).

Sizes 6" - 16" are furnished with Glass Filled PVC ring.  
 Sizes 18" - 24" are furnished with steel ring.