



Irrigation & Turf Product

PVC 80, 100 & 125 PSI PIP Fabricated Fittings

Couplings

Size	80 PSI	100 PSI	125 PSI
	Prod Code:310	Prod Code:320	Prod Code:330
	Part Number	Part Number	Part Number

PIP Repair Coupling (Gasket x Gasket)

	6	2928-060 103.41	3028-060 117.51	3328-060P 134.29
	8	2928-080 144.86	3028-080 166.57	3328-080P 200.13
	10	2928-100 250.08	3028-100 267.37	3328-100P 315.36
	12	2928-120 348.83	3028-120 366.79	3328-120P 436.68
	15	2928-150 520.47	3028-150 546.34	3328-150P 661.23
	18	2928-180 867.18	3028-180 999.63	3328-180P 1376.56
	21	2928-210 1198.24	3028-210 1438.55	3328-210P 1934.26
	24	2928-240 1661.15	3028-240 1994.66	3328-240P 2705.40
	27	2928-270 2127.38	3028-270 2655.69	3328-270P 3380.67

Size	80 PSI	100 PSI	125 PSI
	Prod Code:310	Prod Code:320	Prod Code:330
	Part Number	Part Number	Part Number

PIP Coupling (Socket x Socket)

	6	290-100002 30.99	300-100002 34.89	3329-060P 46.23
	8	290-100003 38.73	300-100003 47.75	3329-080P 58.79
	10	290-100004 64.56	300-100004 76.20	3329-100P 94.07
	12	290-100005 96.84	300-100005 117.51	3329-120P 152.73
	15	290-100006 147.21	300-100006 201.44	3329-150P 229.46
	18	290-100007 337.07	300-100007 423.62	3329-180P 516.52
	21	290-100009 448.14	300-100009 740.03	3329-210P 835.53
	24	290-100010 786.49	300-100010 986.69	3329-240P 1004.86
	27	2929-270 953.43	3029-270 1187.87	3329-270P 1834.92
	30	2929-300 1250.47	3029-300 1929.01	---

PIP Coupling (Gasket x Spigot)

	6	290-100068 64.56	300-100068 68.43	3329-06023P 85.63
	8	290-100069 98.11	300-100069 105.88	3329-08023P 135.55
	10	290-100070 145.92	300-100070 154.93	3329-10023P 201.29
	12	290-100071 179.48	300-100071 210.49	3329-12023P 264.20
	15	290-100072 277.63	300-100072 419.71	3329-15023P 488.20

Size	80 PSI	100 PSI	125 PSI
	Prod Code:310	Prod Code:320	Prod Code:330
	Part Number	Part Number	Part Number

PIP Coupling (Gasket x Spigot) (continued)

	18	290-100073 466.23	300-100073 840.71	3329-18023P 642.34
	21	290-100075 681.93	300-100075 1109.39	3329-21023P 978.88
	24	2929-24023 833.01	3029-24023 1109.36	3329-24023P 1386.17
	27	2929-27023 1081.71	3029-27023 1351.98	3329-27023P 1690.27

PIP Coupling (Gasket x Gasket)

	6	290-100090 77.48	300-100090 86.48	3329-0602P 111.92
	8	290-100091 142.05	300-100091 160.29	3329-0802P 183.81
	10	290-100092 181.78	300-100092 204.04	3329-1002P 270.25
	12	290-100093 228.61	300-100093 298.61	3329-1202P 300.61
	15	290-100094 368.04	300-100094 548.86	3329-1502P 570.80
	18	290-100095 614.74	300-100095 648.36	3329-1802P 810.58
	21	290-100097 768.44	300-100097 1048.68	3329-2102P 1193.06
	24	2929-2402 1290.26	3029-2402 1395.99	3329-2402P 1675.46
	27	2929-2702 1486.95	3029-2702 1744.99	3329-2702P 2182.23

Reducer Couplings

Size	80 PSI	100 PSI	125 PSI
	Prod Code:310	Prod Code:320	Prod Code:330
	Part Number	Part Number	Part Number

Reducer Coupling (Socket x Socket)

	6X2	2929-528 66.04	3029-528 117.05	---
	6X2-1/2	---	3029-529 97.71	---
	6X3	---	3029-530 101.97	---
	6X4	2929-532 38.15	3029-532 42.61	3329-532P 45.44
	8X2	2929-578 164.79	---	---
	8X2-1/2	---	3029-579 170.44	---
	8X3	---	3029-580 178.65	---
	8X4	2929-582 108.47	300-100927 116.39	3329-582P 135.41

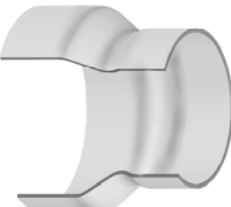
Irrigation & Turf Product
PVC 80, 100 & 125 PSI PIP Fabricated Fittings



Reducer Couplings

	Size	80 PSI	100 PSI	125 PSI
		Prod Code:310	Prod Code:320	Prod Code:330
		Part Number	Part Number	Part Number

Reducer Coupling (Socket x Socket) (continued)

	8X6	2929-585 56.47	300-100928 65.87	3329-585P 76.36
	10X2	2929-621 194.80	3029-621 239.92	---
	10X2-1/2	---	3029-622 197.12	---
	10X3	---	3029-623 140.71	---
	10X4	2929-624 149.22	3029-624 173.03	3329-624P 190.15
	10X6	2929-626 123.38	300-100930 135.55	3329-626P 133.18
	10X8	2929-628 77.57	300-100931 90.37	3329-628P 168.86
	12X2	---	3029-661 479.58	---
	12X2-1/2	---	3029-662 327.69	---
	12X3	---	3029-663 296.78	---
	12X4	2929-664 214.17	3029-664 223.38	3329-664P 325.73
	12X6	2929-666 196.38	300-100933 209.23	3329-666P 301.69
	12X8	2929-668 136.84	300-100934 145.04	3329-668P 264.07
	12X10	2929-670 113.01	300-100935 130.43	3329-670P 249.13
	15X2	2929-721 489.14	---	---
	15X3	2929-723 445.20	3029-723 513.08	---
	15X4	2929-724 461.76	3029-724 494.11	3329-724P 585.60
	15X6	2929-726 436.56	3029-726 467.12	3329-726P 508.27
	15X8	2929-728 409.68	3029-728 442.47	3329-728P 476.86
	15X10	2929-730 282.66	3029-730 353.85	3329-730P 384.88
	15X12	2929-732 182.46	300-100940 210.49	3329-732P 363.12
	18X4	2929-784 898.59	3029-784 1009.05	3329-784P 1068.71
	18X6	2929-786 935.86	3029-786 987.34	3329-786P 1046.47
	18X8	2929-788 862.72	3029-788 914.48	3329-788P 978.51

Reducer Coupling (Socket x Socket) (continued)

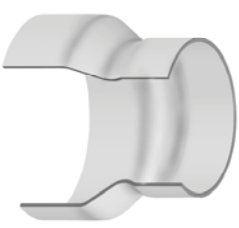
Size	80 PSI	100 PSI	125 PSI
	Prod Code:310 Part Number	Prod Code:320 Part Number	Prod Code:330 Part Number
18X10	2929-790 555.18	3029-790 598.60	3329-790P 676.46
18X12	2929-792 544.25	3029-792 562.28	3329-792P 637.52
18X15	2929-795 327.06	300-100946 383.56	3329-795P 466.23
21X3	2929-843 1116.76	---	---
21X4	2929-844 1141.35	3029-844 1202.98	3329-844P 1299.23
21X6	2929-846 1093.41	3029-846 1159.00	3329-846P 1234.35
21X8	2929-848 912.55	3029-848 958.56	3329-848P 983.75
21X10	2929-850 845.32	3029-850 892.66	3329-850P 922.92
21X12	2929-852 851.17	3029-852 817.52	3329-852P 866.58
21X15	2929-855 749.43	3029-855 794.31	3329-855P 952.45
21X18	2929-858 451.11	300-100960 528.20	3329-858P 662.57
24X3	2929-903 1772.69	3029-903 1070.46	---
24X6	2929-906 1810.45	3029-906 1930.76	3329-906P 2104.52
24X8	2929-908 1717.68	3029-908 1801.31	3329-908P 1899.78
24X10	2929-910 1635.09	3029-910 1723.38	3329-910P 1850.53
24X12	2929-912 1431.18	3029-912 1516.65	3329-912P 2118.52
24X15	2929-915 1041.22	3029-915 1124.52	3329-915P 1138.45
24X18	2929-918 987.99	3029-918 1057.14	3329-918P 1128.60
24X21	2929-921 668.75	300-100969 777.47	3329-921P 945.36
27X6	2929-936 2353.97	---	3329-936P 2714.06
27X8	2929-938 2189.53	3029-938 2376.63	3329-938P 2537.92
27X10	2929-940 2052.80	3029-940 2187.08	3329-940P 2337.88
27X12	2929-942 1928.61	3029-942 2044.34	3329-942P 2207.55
27X15	2929-945 1519.22	3029-945 1623.34	3329-945P 1732.18
27X18	2929-948 1425.15	3029-948 1524.26	3329-948P 1604.34
27X21	2929-951 1181.96	3029-951 1415.63	3329-951P 1513.53
27X24	2929-954 919.32	3029-954 1146.49	3329-954P 1429.68
30X18	2929-978 2844.47	3029-978 3146.21	---



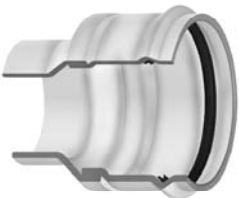
Reducer Couplings

	Size	80 PSI	100 PSI	125 PSI
		Prod Code:310	Prod Code:320	Prod Code:330
		Part Number	Part Number	Part Number

Reducer Coupling (Socket x Socket) (continued)

	30X21	---	3029-981 2997.26	---
	30X24	---	3029-984 2673.65	---
	30X27	---	3029-987 2274.22	---

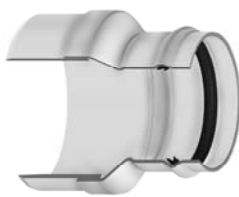
Reducer Coupling (Gasket x Spigot)

	6X4	2929-53223 91.96	300-101310 94.26	3329-53223P 134.41
	8X4	2929-58223 208.85	300-100927 116.39	3329-58223P 260.42
	8X6	2929-58523 110.68	300-101312 134.29	3329-58523P 174.39
	10X4	2929-62423 305.27	3029-62423 332.76	3329-62423P 365.66
	10X6	2929-62623 237.27	300-100930 135.55	3329-62623P 297.53
	10X8	2929-62823 180.41	300-101315 193.71	3329-62823P 266.53
	12X4	2929-66423 411.85	3029-66423 429.57	3329-66423P 602.28
	12X6	2929-66623 377.64	300-100933 209.23	3329-66623P 580.17
	12X8	2929-66823 263.15	300-100934 145.04	3329-66823P 507.84
	12X10	2929-67023 252.68	300-101319 284.14	3329-67023P 347.01
	15X4	2929-72423 888.02	3029-72423 950.19	3329-72423P 1198.03
	15X6	2929-72623 839.53	3029-72623 898.29	3329-72623P 918.81
	15X8	2929-72823 787.86	3029-72823 850.92	3329-72823P 903.40
	15X10	2929-73023 543.56	3029-73023 680.48	3329-73023P 789.11
	15X12	2929-73223 434.29	300-101324 472.68	3329-73223P 610.08
	18X4	2929-78423 1838.36	3029-78423 1940.48	3329-78423P 2055.20
	18X6	2929-78623 1799.74	3029-78623 1898.73	3329-78623P 2012.42
	18X8	2929-78823 1658.94	3029-78823 1758.60	3329-78823P 1881.73
	18X10	2929-79023 1067.64	3029-79023 1151.18	3329-79023P 1300.89
	18X12	2929-79223 1046.66	3029-79223 1081.31	3329-79223P 1225.99
18X15	2929-79523 764.91	300-101330 898.92	3329-79523P 932.44	

Reducer Coupling (Gasket x Spigot) (continued)

Size	80 PSI	100 PSI	125 PSI
	Prod Code:310 Part Number	Prod Code:320 Part Number	Prod Code:330 Part Number
21X6	2929-84623 2102.69	3029-84623 2228.93	3329-84623P 2373.75
21X8	2929-84823 1825.09	3029-84823 1842.65	3329-84823P 1891.82
21X10	2929-85023 1625.63	3029-85023 1716.65	3329-85023P 1774.82
21X12	2929-85223 1511.81	3029-85223 1572.15	3329-85223P 1666.49
21X15	2929-85523 1441.21	3029-85523 1527.53	3329-85523P 1622.71
21X18	2929-85823 1132.73	300-101344 1436.36	3329-85823P 1531.73
24X6	2929-90623 3481.63	3029-90623 3712.99	3329-90623P 4046.55
24X8	2929-90823 3303.24	3029-90823 3464.04	3329-90823P 3653.42
24X10	2929-91023 3144.40	3029-91023 3313.45	3329-91023P 3558.69
24X12	2929-91223 2752.25	3029-91223 2915.55	3329-91223P 3114.95
24X15	2929-91523 2002.35	3029-91523 2162.55	3329-91523P 2830.66
24X18	2929-91823 1899.97	3029-91823 2133.29	3329-91823P 2694.44
24X21	2929-92123 1690.31	3029-92123 2097.43	3329-92123P 2569.04
27X6	2929-93623 4526.86	3029-93623 4832.72	3329-93623P 5218.57
27X8	2929-93823 4210.40	3029-93823 4569.86	3329-93823P 4878.53
27X10	2929-94023 3947.69	3029-94023 4218.26	3329-94023P 4495.12
27X12	2929-94223 3706.54	3029-94223 3930.80	3329-94223P 4244.31
27X15	2929-94523 2920.38	3029-94523 3120.54	3329-94523P 3706.54
27X18	2929-94823 2732.27	3029-94823 2930.02	3329-94823P 3585.19
27X21	2929-95123 2416.36	3029-95123 2720.21	3329-95123P 3535.32
27X24	2929-95423 2366.27	3029-95423 2975.36	3329-95423P 3498.18

Reducer Coupling (Spigot x Gasket)

	6X4	2929-53232 87.58	300-101383 90.79	3329-53232P 116.83
	8X4	2929-58232 200.51	3029-58232 214.89	3329-58232P 250.01
	8X6	2929-58532 106.26	300-101385 126.53	3329-58532P 135.02
	10X4	2929-62432 293.06	3029-62432 319.44	3329-62432P 351.04
	10X6	2929-62632 227.77	3029-62632 250.25	3329-62632P 285.64
	10X8	2929-62832 166.98	300-101388 188.78	3329-62832P 241.11

Irrigation & Turf Product
PVC 80, 100 & 125 PSI PIP Fabricated Fittings



Reducer Couplings

	Size	80 PSI	100 PSI	125 PSI
		Prod Code:310	Prod Code:320	Prod Code:330
		Part Number	Part Number	Part Number

Reducer Coupling (Spigot x Gasket) (continued)

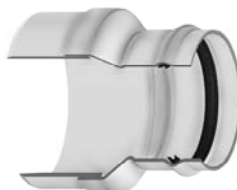
12X4	2929-66432 395.39	3029-66432 412.39	3329-66432P 578.19
12X6	2929-66632 362.53	3029-66632 386.28	3329-66632P 556.96
12X8	2929-66832 252.63	3029-66832 291.85	3329-66832P 487.42
12X10	2929-67032 241.57	300-101392 267.37	3329-67032P 341.01
15X4	2929-72432 852.48	3029-72432 912.18	3329-72432P 1150.12
15X6	2929-72632 805.94	3029-72632 862.38	3329-72632P 938.36
15X8	2929-72832 756.37	3029-72832 816.87	3329-72832P 867.25
15X10	2929-73032 521.71	3029-73032 653.25	3329-73032P 757.54
15X12	2929-73232 354.74	300-101397 413.29	3329-73232P 586.32
18X4	2929-78432 1764.83	3029-78432 1862.86	3329-78432P 1973.00
18X6	2929-78632 1727.74	3029-78632 1822.76	3329-78632P 1931.94
18X8	2929-78832 1592.58	3029-78832 1688.25	3329-78832P 1806.46
18X10	2929-79032 1024.68	3029-79032 1105.12	3329-79032P 1248.86
18X12	2929-79232 1004.78	3029-79232 1038.06	3329-79232P 1176.96
18X15	2929-79532 695.52	300-101403 799.43	3329-79532P 897.64
21X6	2929-84632 2018.59	3029-84632 2139.78	3329-84632P 2278.79
21X8	2929-84832 1752.08	3029-84832 1768.94	3329-84832P 1866.55
21X10	2929-85032 1535.53	3029-85032 1647.98	3329-85032P 1703.83
21X12	2929-85232 1451.36	3029-85232 1509.26	3329-85232P 1598.59
21X15	2929-85532 1383.56	3029-85532 1466.27	3329-85532P 1557.76
21X18	2929-85832 1068.69	300-101417 1204.97	3329-85832P 1398.74
24X6	2929-90632 3342.36	3029-90632 3564.46	3329-90632P 3884.79
24X8	2929-90832 3171.12	3029-90832 3325.47	3329-90832P 3507.28
24X10	2929-91032 3018.62	3029-91032 3180.92	3329-91032P 3416.48
24X12	2929-91232 2642.43	3029-91232 2798.93	3329-91232P 2990.34
24X15	2929-91532 1922.54	3029-91532 2077.75	3329-91532P 2717.44



	Size	80 PSI	100 PSI	125 PSI
		Prod Code:310	Prod Code:320	Prod Code:330
		Part Number	Part Number	Part Number

Reducer Coupling (Spigot x Gasket) (continued)

24X18	2929-91832 1823.97	3029-91832 2047.96	3329-91832P 2585.84
24X21	2929-92132 1663.34	3029-92132 2003.15	3329-92132P 2227.82
27X6	2929-93632 4345.77	3029-93632 4639.59	3329-93632P 5009.83
27X8	2929-93832 4041.99	3029-93832 4386.78	3329-93832P 4679.17
27X10	2929-94032 3789.68	3029-94032 4049.54	3329-94032P 4315.31
27X12	2929-94232 3558.27	3029-94232 3773.59	3329-94232P 4074.55
27X15	2929-94532 2803.75	3029-94532 2995.71	3329-94532P 3557.34
27X18	2929-94832 2622.98	3029-94832 2812.82	3329-94832P 3441.77
27X21	2929-95132 2319.69	3029-95132 2611.40	3329-95132P 3190.01
27X24	2929-95432 2324.56	3029-95432 2784.18	3329-95432P 3357.51



Reducer Coupling (Gasket x Gasket)

6X4	2929-5322 106.51	300-101456 126.53	3329-5322P 160.86
8X4	2929-5822 238.59	3029-5822 255.73	3329-5822P 297.49
8X6	2929-5852 134.71	300-101458 166.57	3329-5852P 207.04
10X4	2929-6242 348.73	3029-6242 380.14	3329-6242P 416.33
10X6	2929-6262 271.48	3029-6262 297.81	3329-6262P 339.93
10X8	2929-6282 236.35	300-101461 267.37	3329-6282P 334.18
12X4	2929-6642 470.52	3029-6642 490.96	3329-6642P 688.05
12X6	2929-6662 431.41	3029-6662 459.67	3329-6662P 662.78
12X8	2929-6682 351.60	3029-6682 410.39	3329-6682P 580.03
12X10	2929-6702 317.49	300-101465 366.79	3329-6702P 462.05
15X4	2929-7242 1015.73	3029-7242 1085.63	3329-7242P 1368.71
15X6	2929-7262 959.07	3029-7262 1026.23	3329-7262P 1117.69
15X8	2929-7282 900.06	3029-7282 972.08	3329-7282P 1032.03
15X10	2929-7302 620.73	3029-7302 757.77	3329-7302P 901.48
15X12	2929-7322 468.38	300-101470 533.38	3329-7322P 666.40
18X4	2929-7842 2099.60	3029-7842 2216.78	3329-7842P 2347.33
18X6	2929-7862 2056.00	3029-7862 2169.09	3329-7862P 2299.00






Reducer Couplings

	Size	80 PSI	100 PSI	125 PSI
		Prod Code:310	Prod Code:320	Prod Code:330
		Part Number	Part Number	Part Number

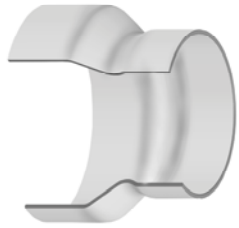
Reducer Coupling (Gasket x Gasket) (continued)

	18X8	2929-7882 1895.17	3029-7882 2009.03	3329-7882P 2149.72
	18X10	2929-7902 1219.37	3029-7902 1315.09	3329-7902P 1486.14
	18X12	2929-7922 1195.63	3029-7922 1235.29	3329-7922P 1401.23
	18X15	2929-7952 836.80	300-101476 932.44	3329-7952P 1065.47
	21X6	2929-8462 2402.08	3029-8462 2546.33	3329-8462P 2711.76
	21X8	2929-8482 2084.99	3029-8482 2104.08	3329-8482P 2220.47
	21X10	2929-8502 1827.28	3029-8502 1960.83	3329-8502P 2027.99
	21X12	2929-8522 1727.13	3029-8522 1796.02	3329-8522P 1902.64
	21X15	2929-8552 1645.96	3029-8552 1744.44	3329-8552P 1853.39
	21X18	2929-8582 1369.91	300-101489 1465.89	3329-8582P 1631.20
	24X6	2929-9062 3976.87	3029-9062 4242.49	3329-9062P 4621.53
	24X8	2929-9082 3773.93	3029-9082 3957.32	3329-9082P 4173.66
	24X10	2929-9102 3591.86	3029-9102 3784.37	3329-9102P 3827.67
	24X12	2929-9122 3144.19	3029-9122 3330.73	3329-9122P 3559.03
	24X15	2929-9152 2287.63	3029-9152 2472.52	3329-9152P 3233.73
	24X18	2929-9182 2233.69	3029-9182 2436.86	3329-9182P 3077.03
	24X21	2929-9212 2207.45	3029-9212 2409.98	3329-9212P 3055.48
	27X6	2929-9362 5172.17	3029-9362 5476.59	3329-9362P 5961.57
	27X8	2929-9382 4811.04	3029-9382 5219.93	3329-9382P 5567.62
	27X10	2929-9402 4509.60	3029-9402 4818.51	3329-9402P 5134.86
	27X12	2929-9422 4233.49	3029-9422 4490.20	3329-9422P 4848.36
	27X15	2929-9452 3336.68	3029-9452 3563.52	3329-9452P 4232.05
	27X18	2929-9482 3120.33	3029-9482 3347.14	3329-9482P 4094.76
	27X21	2929-9512 2886.07	3029-9512 3231.87	3329-9512P 4038.05
	27X24	2929-9542 2784.16	3029-9542 3089.86	3329-9542P 3937.85

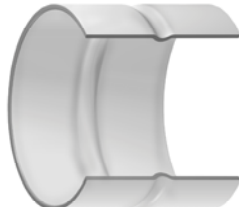
PIP x IPS Adapters & Couplings

	Size	80 PSI	100 PSI	125 PSI
		Prod Code:319	Prod Code:329	Prod Code:339
		Part Number	Part Number	Part Number


PIP X IPS Reducer (Socket)

	6X4	2929-532 38.15	---	3329-532P 45.44
	8X6	---	300-101537 50.34	---
	10X6	---	3029-626PXI 155.13	---
	10X8	---	300-101538 114.47	---
	12X10	---	300-101539 138.15	---
	15X10	---	300-101541 348.69	---
	15X12	---	300-101540 237.63	---
	Size	80 PSI Prod Code:319 Part Number	100 PSI Prod Code:329 Part Number	125 PSI Prod Code:339 Part Number

IPS x PIP Adapter (Socket x Socket)

	6	---	300-101649 41.29	---
	8	---	300-101650 59.36	---
	10	---	300-101651 99.45	---
	12	---	300-101652 154.93	---

IPS x PIP Adapter (Gasket x Gasket)

	6	---	300-101747 100.69	---
	8	---	300-101748 164.37	---
	10	---	300-101749 236.40	---
	12	---	300-101750 333.20	---