



PVC 80, 100 & 125 PSI PIP Fabricated Fittings & Pipe Flanges

Glue-On Saddles

Size	80 PSI	100 PSI	125 PSI
	Prod Code:310	Prod Code:320	Prod Code:330
	Part Number	Part Number	Part Number

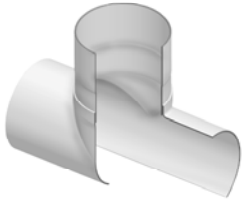
Saddle (Socket) (continued)

NOTE: When assembling Spears® Saddles to PVC pipe, Spears® Manufacturing Company recommends Spears® PVC-19 Solvent Cement and Primer-68 or Primer -70, or equivalent. Although good connections may be accomplished without Saddle Straps, Spears® Manufacturing Company recommends the use of a clamp or strap device during the assembly step to insure good compression between the pipe and fitting surfaces as the solvent cures. PVC Fabricated Saddle connections are designed for use in low pressure open ended systems and are not intended for use in high pressure applications. For further details, contact Spears® Technical Services Department. Also applies to stub saddles.

Size	80 PSI	100 PSI	125 PSI
	Prod Code:310	Prod Code:320	Prod Code:330
	Part Number	Part Number	Part Number

Stub Saddle (Socket)

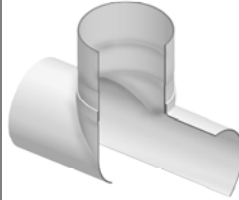
6X2	---	300-101884 95.13	---
6X3	---	300-101892 104.68	---
6X4	---	300-101899 120.96	---
8X2	---	300-101885 95.13	---
8X3	---	300-101893 104.68	---
8X4	---	300-101900 120.96	---
8X6	---	300-101906 149.53	---
10X2	---	300-101886 95.13	---
10X3	---	300-101894 104.68	---
10X4	---	300-101901 120.96	---
10X6	---	300-101907 149.53	---
10X8	---	300-101912 195.78	---
12X2	---	300-101887 95.13	---
12X3	---	300-101895 104.68	---
12X4	---	300-101902 120.96	---
12X6	---	300-101908 149.53	---
12X8	---	300-101913 195.78	---
12X10	---	300-101917 212.04	---
15X2	---	300-101888 137.29	---
15X3	---	300-101896 152.21	---



Size	80 PSI	100 PSI	125 PSI
	Prod Code:310	Prod Code:320	Prod Code:330
	Part Number	Part Number	Part Number

Stub Saddle (Socket) (continued)

15X4	---	300-101903 159.06	---
15X6	---	300-101909 164.46	---
15X8	---	300-101914 195.78	---
15X10	---	300-101918 225.64	---
15X12	---	300-101921 297.69	---
18X2	---	300-101889 224.28	---
18X3	---	300-101897 229.74	---
18X4	---	300-101904 277.28	---
18X6	---	300-101910 353.45	---
18X8	---	300-101915 377.93	---
18X10	---	300-101919 435.04	---
18X12	---	300-101922 501.68	---
18X15	---	300-101924 701.47	---

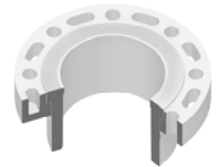


Pipe Flanges

Part Number	Size	Std Pk	Mstr Ctn	Prod Code	MSRP
-------------	------	--------	----------	-----------	------

Flange Van Stone Style -PIP

Flange x PIP Socket



125 psi Maximum Internal Pressure Rating @ 73°F (23°C)

354-060F	6X6.140	1	4	320	148.12
354-080	8X8.160	2	0	080	142.49
354-080F	8X8.160	1	2	320	224.28
354-100F	10X10.200	1	2	320	315.36
354-100	10X10.200	2	0	081	297.78
354-120	12X12.240	2	0	081	365.86
354-120F	12X12.240	1	2	320	456.75
354-150F	14X15.300	1	0	320	1217.46
354-151F	16X15.300	1	0	320	1388.87
354-182F	18X18.360	1	0	320	2109.93
354-181F	18X18.701	1	0	320	2109.93
354-201F	20X22.047	1	0	320	3213.86
354-241F	24X24.803	1	0	320	4706.61
354-060	6x6.14	5	0	080	119.39