

Irrigation & Turf Product
PVC Low Head PIP Fabricated Fittings, Risers & Accessories



Riser Extensions

Part Number	Size	Std Pk	Mstr Ctn	Prod Code	MSRP
-------------	------	--------	----------	-----------	------

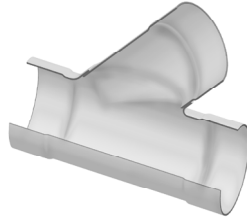
Vent Base (continued)

Saddle x Riser x Outlet

2888-732080	15X12X8	1	0	301	195.05
2888-795080	18X15X8	1	0	301	269.94
2888-828080	20X18X8	1	0	301	488.35

Wyes

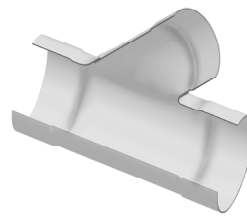
Wye



Socket x Socket x Socket

2875-060	6	1	2	300	86.11
2875-080	8	1	0	300	113.89
2875-100	10	1	0	300	148.17
2875-120	12	1	0	300	206.43
2875-150	15	1	0	300	319.35
2875-183	18	1	0	300	767.89
2875-200	20	1	0	300	1029.76

Wye - Reducing

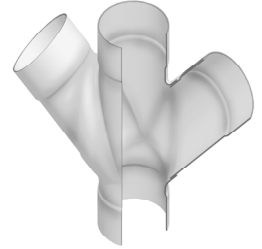


Socket x Socket x Socket

2875-532	6X4	1	4	300	67.15
2875-585	8X6	1	0	300	99.34
2875-626	10X6	1	0	300	127.04
2875-628	10X8	1	0	300	134.01
2875-666	12X6	1	0	300	139.62
2875-668	12X8	1	0	300	160.28
2875-670	12X10	1	0	300	171.22
2875-726	15X6	1	0	300	188.21
2875-728	15X8	1	0	300	203.99
2875-730	15X10	1	0	300	223.41
2875-732	15X12	1	0	300	245.28
2875-786	18X6	1	0	300	303.59
2875-788	18X8	1	0	300	308.39
2875-790	18X10	1	0	300	337.00
2875-792	18X12	1	0	300	371.67
2875-795	18X15	1	0	300	406.34
2875-816	20X6	1	0	300	379.47
2875-818	20X8	1	0	300	385.47
2875-820	20X10	1	0	300	421.24
2875-822	20X12	1	0	300	464.58
2875-825	20X15	1	0	300	507.94
2875-828	20X18	1	0	300	893.68

Part Number	Size	Std Pk	Mstr Ctn	Prod Code	MSRP
-------------	------	--------	----------	-----------	------

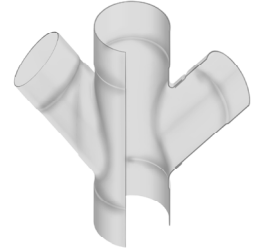
Double Wye



Socket x Socket x Socket x Socket

2876-060	6	1	2	300	135.23
2876-080	8	1	0	300	154.05
2876-100	10	1	0	300	257.96
2876-120	12	1	0	300	308.09
2876-150	15	1	0	300	476.64
2876-183	18	1	0	300	1292.38
2876-200	20	1	0	300	1837.24

Double Wye - Reducing



Socket x Socket x Socket x Socket

2876-585	8X6	1	0	300	108.76
2876-626	10X6	1	0	300	154.05
2876-628	10X8	1	0	300	170.38
2876-666	12X6	1	0	300	208.39
2876-668	12X8	1	0	300	239.23
2876-670	12X10	1	0	300	286.01
2876-726	15X6	1	0	300	280.91
2876-728	15X8	1	0	300	304.45
2876-730	15X10	1	0	300	333.47
2876-732	15X12	1	0	300	452.14
2876-786	18X6	1	0	300	453.14
2876-788	18X8	1	0	300	460.28
2876-790	18X10	1	0	300	502.98
2876-792	18X12	1	0	300	554.74
2876-795	18X15	1	0	300	606.48
2876-816	20X6	1	0	300	625.86
2876-818	20X8	1	0	300	642.18
2876-820	20X10	1	0	300	657.37
2876-822	20X12	1	0	300	693.40
2876-825	20X15	1	0	300	758.11
2876-828	20X18	1	0	300	1402.01