

Irrigation & Turf Product
PVC Low Head PIP Fabricated Fittings, Risers & Accessories



Crosses

Part Number	Size	Std Pk	Mstr Ctn	Prod Code	MSRP
Cross (continued)					
Socket x Socket x Socket x Socket					
280-103288	8X3	1	0	300	90.37
280-103289	8X4	1	0	300	96.84
280-103290	8X6	1	0	300	101.97
280-103297	10	1	0	300	151.11
280-103292	10X2	1	2	300	90.37
280-103293	10X3	1	0	300	93.63
280-103294	10X4	1	0	300	96.84
280-103295	10X6	1	0	300	108.48
280-103296	10X8	1	0	300	123.93
280-103304	12	1	0	300	210.49
280-103303	12X10	1	0	300	179.48
280-103298	12X2	1	0	300	122.05
280-103299	12X3	1	0	300	123.29
280-103300	12X4	1	0	300	126.53
280-103301	12X6	1	0	300	136.88
280-103302	12X8	1	0	300	148.52
280-103321	15	1	0	300	401.67
280-103313	15X2	1	0	300	179.48
280-103314	15X3	1	0	300	183.38
280-103315	15X4	1	0	300	192.44
280-103316	15X6	1	0	300	204.04
280-103317	15X8	1	0	300	219.54
280-103318	15X10	1	0	300	259.60
280-103319	15X12	1	0	300	312.55
280-103342	18	1	0	300	644.44
280-103332	18X2	1	0	300	348.69
280-103333	18X3	1	0	300	351.95
280-103334	18X4	1	0	300	355.18
280-103335	18X6	1	0	300	364.20
280-103336	18X8	1	0	300	374.52
280-103337	18X10	1	0	300	426.15
280-103338	18X12	1	0	300	453.36
280-103340	18X15	1	0	300	516.63
280-103354	20	1	0	300	848.54
280-103343	20X2	1	0	300	489.45
280-103344	20X3	1	0	300	493.33
280-103345	20X4	1	0	300	497.24
280-103346	20X6	1	0	300	508.84
280-103347	20X8	1	0	300	521.77
280-103348	20X10	1	0	300	559.19
280-103349	20X12	1	0	300	601.84
280-103351	20X15	1	0	300	630.24
280-103353	20X18	1	0	300	740.03

Riser Extensions

Part Number	Size	Std Pk	Mstr Ctn	Prod Code	MSRP
Orchard Riser					
Saddle x Riser					
2880-04030	4X4	1	0	301	37.39
2880-53230	6X4	1	35	301	37.39
2880-06030	6X6	1	25	301	64.56
2880-58230	8X4	1	25	301	37.39
2880-58530	8X6	1	25	301	49.04
2880-08030	8X8	1	12	301	90.41
2880-62430	10X4	1	30	301	38.73
2880-62630	10X6	1	20	301	49.04
2880-62830	10X8	1	16	301	67.15
2880-10030	10X10	1	6	301	129.11
2880-66430	12X4	1	25	301	40.01
2880-66630	12X6	1	20	301	49.04
2880-66830	12X8	1	12	301	67.15
2880-67030	12X10	1	9	301	92.96
2880-12030	12X12	1	6	301	180.79
2880-72430	15X4	1	25	301	42.59
2880-72630	15X6	1	25	301	56.78
2880-72830	15X8	1	12	301	76.20
2880-73030	15X10	1	9	301	105.88
2880-73230	15X12	1	6	301	145.92
2880-15030	15X15	1	4	301	302.19
2880-78430	18X4	1	25	301	46.53
2880-78630	18X6	1	25	301	55.22
2880-78830	18X8	1	12	301	80.09
2880-79030	18X10	1	9	301	107.18
2880-79230	18X12	1	6	301	165.27
2880-79530	18X15	1	4	301	238.91
2880-18030	18X18	1	3	301	453.28
2880-81430	20X4	1	0	301	49.07
2880-81630	20X6	1	12	301	64.59
2880-81830	20X8	1	12	301	96.84
2880-82030	20X10	1	6	301	151.12
2880-82230	20X12	1	5	301	183.38
2880-82530	20X15	1	4	301	269.96
2880-82830	20X18	1	0	301	331.91
2880-20030	20X20	1	2	301	585.07





Riser Extensions

Part Number	Size	Std Pk	Mstr Ctn	Prod Code	MSRP
-------------	------	--------	----------	-----------	------

Erosion Pot Riser

Saddle x Riser x Pot



2881-53232	6X4X8	1	16	301	71.57
2881-06032	6X6X10	1	0	301	85.64
2881-58232	8X4X8	1	20	301	71.57
2881-58532	8X6X10	1	0	301	85.64
2881-08032	8X8X12	1	9	301	121.11
2881-62432	10X4X8	1	16	301	71.57
2881-62632	10X6X10	1	0	301	85.64
2881-62832	10X8X12	1	12	301	121.11
2881-10032	10X10X15	1	0	301	166.39
2881-66432	12X4X8	1	20	301	71.57
2881-66632	12X6X10	1	12	301	85.64
2881-66832	12X8X12	1	12	301	121.11
2881-67032	12X10X15	1	0	301	166.39
2881-12032	12X12X18	1	0	301	220.25
2881-72432	15X4X8	1	0	301	71.57
2881-72632	15X6X10	1	12	301	85.64
2881-72832	15X8X12	1	0	301	121.11
2881-73032	15X10X15	1	0	301	166.39
2881-73232	15X12X18	1	0	301	220.25
2881-15032	15X15X20	1	0	301	324.24
2881-78432	18X4X8	1	0	301	71.57
2881-78632	18X6X10	1	0	301	85.64
2881-78832	18X8X12	1	0	301	121.11
2881-79032	18X10X15	1	0	301	166.39
2881-79232	18X12X18	1	0	301	220.25
2881-79532	18X15X20	1	0	301	324.24
2881-81432	20X4X8	1	0	301	71.57
2881-81632	20X6X10	1	0	301	85.64
2881-81832	20X8X12	1	0	301	121.11
2881-82032	20X10X15	1	0	301	166.39
2881-82232	20X12X18	1	0	301	220.25
2881-82532	20X15X20	1	0	301	324.24

Mechanical Vent Assembly

Saddle x Riser/Vent



2882-420	4X2	1	10	301	70.98
2882-422	4X3	1	0	301	109.73
2882-528	6X2	1	10	301	70.98
2882-530	6X3	1	10	301	109.73

Part Number	Size	Std Pk	Mstr Ctn	Prod Code	MSRP
-------------	------	--------	----------	-----------	------

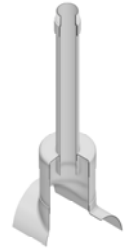
Mechanical Vent Assembly (continued)

Saddle x Riser/Vent

2882-532	6X4	1	5	301	152.41
2882-578	8X2	1	8	301	70.98
2882-580	8X3	1	4	301	109.73
2882-582	8X4	1	8	301	152.41
2882-621	10X2	1	10	301	70.98
2882-623	10X3	1	5	301	109.73
2882-624	10X4	1	3	301	152.41
2882-661	12X2	1	10	301	70.98
2882-663	12X3	1	5	301	109.73
2882-664	12X4	1	4	301	152.41
2882-721	15X2	1	0	301	70.99
2882-723	15X3	1	6	301	109.73
2882-724	15X4	1	4	301	152.41
2882-781	18X2	1	0	301	70.99
2882-783	18X3	1	0	301	109.73
2882-784	18X4	1	4	301	152.41
2882-811	20X2	1	0	301	70.99
2882-813	20X3	1	0	301	109.73
2882-814	20X4	1	5	301	152.41

Mechanical Vent Riser

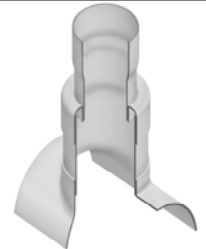
Saddle x Riser/Vent x Chamber



2883-52842	6X2X4	1	0	301	82.65
2883-57842	8X2X6	1	0	301	89.12
2883-58042	8X3X6	1	25	301	112.33
2883-62142	10X2X8	1	12	301	108.48
2883-62342	10X3X8	1	8	301	129.11
2883-62442	10X4X8	1	12	301	152.41
2883-66142	12X2X10	1	6	301	139.45
2883-66342	12X3X10	1	16	301	158.82
2883-66442	12X4X10	1	12	301	180.79
2883-72442	15X4X12	1	6	301	235.02
2883-78442	18X4X15	1	4	301	303.48
2883-81442	20X4X18	1	0	301	427.49

Vent Base

Saddle x Riser x Outlet



2888-532020	6X4X2	1	2	301	53.62
2888-585030	8X6X3	1	0	301	165.89
2888-585040	8X6X4	1	4	301	83.93
2888-628060	10X8X6	1	0	301	129.11
2888-670060	12X10X6	1	0	301	136.88

Irrigation & Turf Product
PVC Low Head PIP Fabricated Fittings, Risers & Accessories

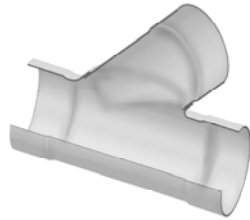


Riser Extensions

Part Number	Size	Std Pk	Mstr Ctn	Prod Code	MSRP
Vent Base (continued)					
Saddle x Riser x Outlet					
2888-732080	15X12X8	1	0	301	205.32
2888-795080	18X15X8	1	0	301	284.15
2888-828080	20X18X8	1	0	301	514.05

Wyes

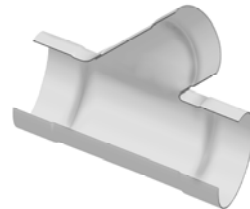
Wye



Socket x Socket x Socket

2875-060	6	1	2	300	90.64
2875-080	8	1	0	300	119.88
2875-100	10	1	0	300	155.97
2875-120	12	1	0	300	217.29
2875-150	15	1	0	300	336.16
2875-183	18	1	0	300	808.31
2875-200	20	1	0	300	1083.96

Wye - Reducing

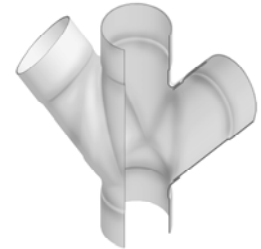


Socket x Socket x Socket

2875-532	6X4	1	4	300	70.68
2875-585	8X6	1	0	300	104.57
2875-626	10X6	1	0	300	133.73
2875-628	10X8	1	0	300	141.06
2875-666	12X6	1	0	300	146.97
2875-668	12X8	1	0	300	168.72
2875-670	12X10	1	0	300	180.23
2875-726	15X6	1	0	300	198.12
2875-728	15X8	1	0	300	214.73
2875-730	15X10	1	0	300	235.17
2875-732	15X12	1	0	300	258.19
2875-786	18X6	1	0	300	319.57
2875-788	18X8	1	0	300	324.62
2875-790	18X10	1	0	300	354.74
2875-792	18X12	1	0	300	391.23
2875-795	18X15	1	0	300	427.73
2875-816	20X6	1	0	300	399.44
2875-818	20X8	1	0	300	405.76
2875-820	20X10	1	0	300	443.41
2875-822	20X12	1	0	300	489.03
2875-825	20X15	1	0	300	534.67
2875-828	20X18	1	0	300	940.72

Part Number	Size	Std Pk	Mstr Ctn	Prod Code	MSRP
-------------	------	--------	----------	-----------	------

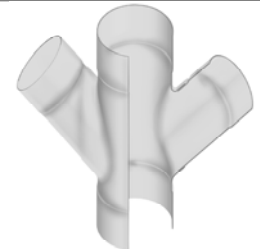
Double Wye



Socket x Socket x Socket x Socket

2876-060	6	1	2	300	142.35
2876-080	8	1	0	300	162.16
2876-100	10	1	0	300	271.54
2876-120	12	1	0	300	324.31
2876-150	15	1	0	300	501.73
2876-183	18	1	0	300	1360.40
2876-200	20	1	0	300	1933.94

Double Wye - Reducing



Socket x Socket x Socket x Socket

2876-585	8X6	1	0	300	114.48
2876-626	10X6	1	0	300	162.16
2876-628	10X8	1	0	300	179.35
2876-666	12X6	1	0	300	219.36
2876-668	12X8	1	0	300	251.82
2876-670	12X10	1	0	300	301.06
2876-726	15X6	1	0	300	295.69
2876-728	15X8	1	0	300	320.47
2876-730	15X10	1	0	300	351.02
2876-732	15X12	1	0	300	475.94
2876-786	18X6	1	0	300	476.99
2876-788	18X8	1	0	300	484.51
2876-790	18X10	1	0	300	529.45
2876-792	18X12	1	0	300	583.94
2876-795	18X15	1	0	300	638.40
2876-816	20X6	1	0	300	658.80
2876-818	20X8	1	0	300	675.98
2876-820	20X10	1	0	300	691.97
2876-822	20X12	1	0	300	729.89
2876-825	20X15	1	0	300	798.01
2876-828	20X18	1	0	300	1475.80