



PVC Low Head PIP Fabricated Fittings, Risers & Accessories

Non 90° Ells

Part Number	Size	Std Pk	Mstr Ctn	Prod Code	MSRP
-------------	------	--------	----------	-----------	------

45° Elbow

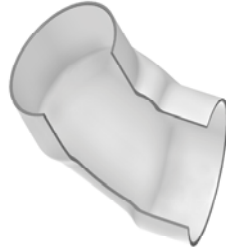
Socket x Socket



280-100592	6	1	4	300	41.29
280-100593	8	1	4	300	60.64
280-100594	10	1	2	300	74.89
280-100595	12	1	2	300	122.73
280-100596	15	1	0	300	197.60
280-100597	18	1	0	300	349.95
280-100598	20	1	0	300	388.73

60° Elbow

Socket x Socket



280-100702	6	1	4	300	77.48
280-100703	8	1	2	300	95.53
280-100704	10	1	0	300	152.41
280-100705	12	1	0	300	200.16
280-100706	15	1	0	300	326.72
280-100707	18	1	0	300	565.64
280-100708	20	1	0	300	762.03

Reducer Coupling

Coupling - Reducer

Socket x Socket



280-100928	8X6	1	2	300	36.16
2829-626	10X6	1	8	300	145.66
280-100931	10X8	1	4	300	55.54
280-100933	12X6	1	6	300	207.71
280-100934	12X8	1	4	300	161.43
280-100935	12X10	1	4	300	80.09
2829-726	15X6	1	0	300	360.45
2829-728	15X8	1	0	309	258.89
280-100939	15X10	1	0	300	184.07
280-100940	15X12	1	0	300	121.35
2829-786	18X6	1	0	300	541.29

Part Number	Size	Std Pk	Mstr Ctn	Prod Code	MSRP
-------------	------	--------	----------	-----------	------

Coupling - Reducer (continued)

Socket x Socket

2829-788	18X8	1	0	300	509.25
280-100944	18X10	1	0	300	445.57
280-100945	18X12	1	0	300	398.99
280-100946	18X15	1	0	300	195.01
2829-816	20X6	1	0	300	833.51
2829-818	20X8	1	0	300	793.57
2829-820	20X10	1	0	300	733.73
2829-822	20X12	1	0	300	674.36
2829-825	20X15	1	0	300	551.48
280-100953	20X18	1	0	300	285.39

PIP x IPS Coupling - Reducer

Socket x Socket

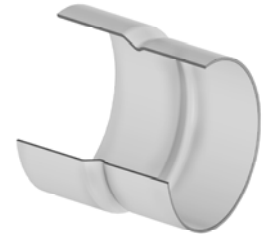


280-101536	6X4	1	4	300	29.04
280-101537	8X6	1	8	300	41.98
280-101538	10X8	1	4	300	55.54
280-101534	12X8	1	4	300	161.43
280-101539	12X10	1	4	300	96.84
280-101540	15X12	1	0	300	154.93

Adapters

IPS x PIP Adapter

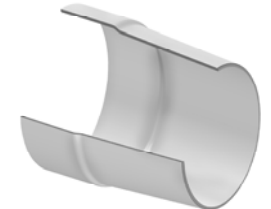
Socket x Socket



280-101649	6	1	4	300	32.29
280-101650	8	1	4	300	47.75
280-101651	10	1	4	300	74.89
280-101652	12	1	4	300	105.88

Concrete Adapter

Socket x Concrete



280-101761	6X6	1	5	300	30.99
280-101762	8X8	1	6	300	45.18
280-101763	10X10	1	4	300	69.73
280-101764	12X12	1	4	300	98.11
280-101765	12X14	1	0	300	104.57
280-101766	15X14	1	0	300	144.60