



**Non 90° Ells**

Part Number	Size	Std Pk	Mstr Ctn	Prod Code	MSRP
-------------	------	--------	----------	-----------	------

**45° Elbow**

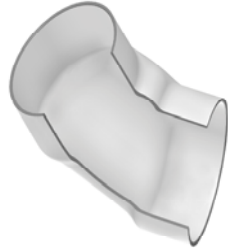
**Socket x Socket**



280-100592	6	1	4	300	43.46
280-100593	8	1	4	300	63.83
280-100594	10	1	2	300	78.83
280-100595	12	1	2	300	129.19
280-100596	15	1	0	300	208.00
280-100597	18	1	0	300	368.37
280-100598	20	1	0	300	409.19

**60° Elbow**

**Socket x Socket**



280-100702	6	1	4	300	81.56
280-100703	8	1	2	300	100.56
280-100704	10	1	0	300	160.43
280-100705	12	1	0	300	210.69
280-100706	15	1	0	300	343.92
280-100707	18	1	0	300	595.41
280-100708	20	1	0	300	802.14

**Reducer Coupling**

**Coupling - Reducer**

**Socket x Socket**



280-100928	8X6	1	2	300	38.06
2829-626	10X6	1	8	300	153.33
280-100931	10X8	1	4	300	58.46
280-100933	12X6	1	6	300	218.64
280-100934	12X8	1	4	300	169.93
280-100935	12X10	1	4	300	84.31
2829-726	15X6	1	0	300	379.42
2829-728	15X8	1	0	309	272.52
280-100939	15X10	1	0	300	193.76
280-100940	15X12	1	0	300	127.74
2829-786	18X6	1	0	300	569.78

Part Number	Size	Std Pk	Mstr Ctn	Prod Code	MSRP
-------------	------	--------	----------	-----------	------

**Coupling - Reducer (continued)**

**Socket x Socket**

2829-788	18X8	1	0	300	536.05
280-100944	18X10	1	0	300	469.02
280-100945	18X12	1	0	300	419.99
280-100946	18X15	1	0	300	205.27
2829-816	20X6	1	0	300	877.38
2829-818	20X8	1	0	300	835.34
2829-820	20X10	1	0	300	772.35
2829-822	20X12	1	0	300	709.85
2829-825	20X15	1	0	300	580.51
280-100953	20X18	1	0	300	300.41

**PIP x IPS Coupling - Reducer**

**Socket x Socket**

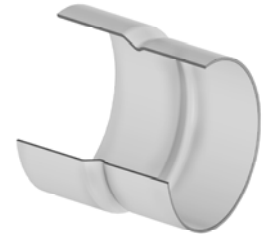


280-101536	6X4	1	4	300	30.57
280-101537	8X6	1	8	300	44.19
280-101538	10X8	1	4	300	58.46
280-101534	12X8	1	4	300	169.93
280-101539	12X10	1	4	300	101.94
280-101540	15X12	1	0	300	163.08

**Adapters**

**IPS x PIP Adapter**

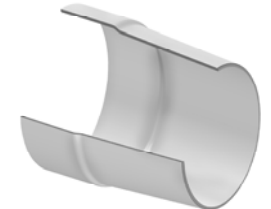
**Socket x Socket**



280-101649	6	1	4	300	33.99
280-101650	8	1	4	300	50.26
280-101651	10	1	4	300	78.83
280-101652	12	1	4	300	111.45

**Concrete Adapter**

**Socket x Concrete**



280-101761	6X6	1	5	300	32.62
280-101762	8X8	1	6	300	47.56
280-101763	10X10	1	4	300	73.40
280-101764	12X12	1	4	300	103.27
280-101765	12X14	1	0	300	110.07
280-101766	15X14	1	0	300	152.21

**Irrigation & Turf Product**  
**PVC Low Head PIP Fabricated Fittings, Risers & Accessories**



**Adapters**

Part Number	Size	Std Pk	Mstr Ctn	Prod Code	MSRP
-------------	------	--------	----------	-----------	------

**Concrete Adapter (continued)**

**Socket x Concrete**

280-101767	15X15	1	0	300	156.34
280-101768	15X16	1	0	300	159.06
280-101769	18X18	1	0	300	184.87
280-101770	20X20	1	0	300	231.09

**Linegate Valve Adapter**

**Linegate x Socket**

280-101777	6	1	6	300	27.09
280-101778	8	1	6	300	30.74
280-101779	10	1	4	300	48.98
280-101780	12	1	4	300	69.34
280-101781	15	1	0	300	119.60
2845-180	18	1	0	300	172.21

**Linegate Valve PIP Adapter**

**Linegate x Socket**

2845-180P	18	1	0	300	172.21
-----------	----	---	---	-----	--------

**Tees**

**Tee**

**Socket x Socket x Socket**

280-102502	6	1	8	300	51.62
280-102499	6X2	1	6	300	40.77
280-102500	6X3	1	4	300	44.19
280-102501	6X4	1	4	300	46.24
280-102507	8	1	2	300	81.76
280-102503	8X2	1	2	300	52.59
280-102504	8X3	1	3	300	62.48
280-102505	8X4	1	2	300	65.21
280-102506	8X6	1	0	300	74.72
280-102508	10X2	1	0	300	82.89
280-102509	10X3	1	0	300	84.25
280-102510	10X4	1	0	300	86.35

Part Number	Size	Std Pk	Mstr Ctn	Prod Code	MSRP
-------------	------	--------	----------	-----------	------

**Tee (continued)**

**Socket x Socket x Socket**

280-102511	10X6	1	0	300	88.35
280-102512	10X8	1	0	300	94.73
280-102513	10	1	0	300	101.95
280-102520	12	1	0	300	165.82
280-102514	12X2	1	2	300	108.75
280-102515	12X3	1	0	300	115.59
280-102516	12X4	1	0	300	120.96
280-102517	12X6	1	0	300	123.36
280-102518	12X8	1	0	300	129.19
280-102519	12X10	1	0	300	141.36
280-102528	15	1	0	300	329.00
280-102521	15X2	1	0	300	176.69
280-102522	15X3	1	0	300	176.69
280-102523	15X4	1	0	300	183.52
280-102524	15X6	1	0	300	188.93
280-102525	15X8	1	0	300	210.69
280-102526	15X10	1	0	300	235.14
280-102527	15X12	1	0	300	274.57
280-102537	18	1	0	300	572.36
280-102529	18X2	1	0	300	333.03
280-102530	18X3	1	0	300	335.72
280-102531	18X4	1	0	300	338.48
280-102532	18X6	1	0	300	345.27
280-102533	18X8	1	0	300	350.74
280-102534	18X10	1	0	300	383.37
280-102535	18X12	1	0	300	422.81
280-102536	18X15	1	0	300	462.22
280-102547	20	1	0	300	708.28
280-102538	20X2	1	0	300	421.43
280-102539	20X3	1	0	300	425.78
280-102540	20X4	1	0	300	432.28
280-102541	20X6	1	0	300	445.92
280-102542	20X8	1	0	300	455.41
280-102543	20X10	1	0	300	504.34
280-102544	20X12	1	0	300	535.62
280-102545	20X15	1	0	300	575.09
280-102546	20X18	1	0	300	647.09

**Crosses**

**Cross**

**Socket x Socket x Socket x Socket**

280-103286	6	1	0	300	85.62
280-103283	6X2	1	0	300	67.96
280-103284	6X3	1	0	300	67.96
280-103285	6X4	1	4	300	74.72
280-103291	8	1	0	300	116.94
280-103287	8X2	1	0	300	95.13