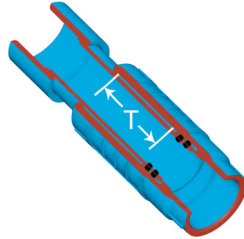




Irrigation & Turf Product
EverTUFF® TURF™ Repair & GripLoc™ Fittings

EverTUFF® TURF™ PVC Short Repair Couplings

| Part Number | Size | Travel - T | Std Pk | Mstr Ctn | Prod Code | MSRP |
|-------------|------|------------|--------|----------|-----------|------|
|-------------|------|------------|--------|----------|-----------|------|



EverTUFF® TURF™ PVC Repair Coupling
 - Short, Socket x Socket

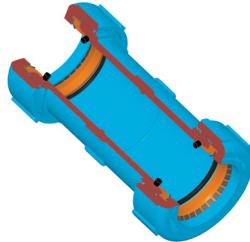
EPDM O-ring

| | | | | | | |
|-----------|-------|-------|----|---|-----|-------|
| SH119-10T | 1 | 2 | 30 | 0 | 031 | 12.79 |
| SH119-12T | 1-1/4 | 2-1/2 | 20 | 0 | 031 | 24.11 |
| SH119-15T | 1-1/2 | 2-3/4 | 21 | 0 | 031 | 26.24 |
| SH119-20T | 2 | 3-1/4 | 12 | 0 | 031 | 40.60 |

Unit Must Be Thrust Blocked
T= Repair Coupling Travel

EverTUFF® TURF™ PVC GripLoc™ Compression Couplings

| Part Number | Size | Std Pk | Mstr Ctn | Prod Code | MSRP |
|-------------|------|--------|----------|-----------|------|
|-------------|------|--------|----------|-----------|------|



EverTUFF® GripLoc™ Compression Coupling

WARNING: DO NOT INSERT FINGERS
For Cold Water Only - EPDM O-rings
Pressure Rated 1" - 2" = 235 psi, 3" & Up = 150 psi
When using over rated pressure up to 315 psi MUST BE RESTRAINED

Hand Tighten ONLY - No Nut Wrenches Required

| | | | | | |
|----------|-------|---|----|-----|--------|
| S112-10T | 1 | 1 | 20 | 131 | 44.40 |
| S112-12T | 1-1/4 | 1 | 10 | 131 | 48.40 |
| S112-15T | 1-1/2 | 1 | 16 | 131 | 56.58 |
| S112-20T | 2 | 1 | 9 | 131 | 66.68 |
| S112-30T | 3 | 1 | 4 | 131 | 114.48 |
| S112-40T | 4 | 1 | 4 | 131 | 129.40 |