



PVC Class 63, 100, 125, 160 & 200 IPS Fabricated Fittings & Molded Class 125



PRODUCT

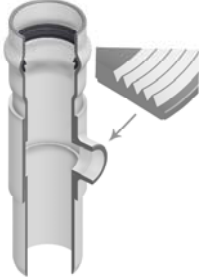
Contact Spears® for any Information not found.



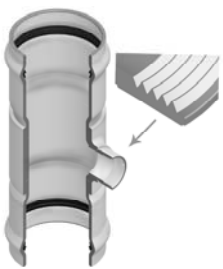
Irrigation & Turf Product
PVC Class 63, 100, 125, 160 & 200 IPS Fabricated Fittings & Molded Class 125

| | Size | CLASS 63 | CLASS 100 | CLASS 125 | CLASS 160 | CLASS 200 |
|--|------|---------------------------------------|---------------------------------------|---------------------------------------|---------------------------------------|---------------------------------------|
| | | Prod Code: 340 Part Number MSRP | Prod Code: 350 Part Number MSRP | Prod Code: 360 Part Number MSRP | Prod Code: 370 Part Number MSRP | Prod Code: 380 Part Number MSRP |

Tee (Gasket x Spigot x Fipt)

| | | | | | | |
|--|----------|-----|-----|-----------------------------|-----------------------------|-----------------------------|
|  | 4X1-1/2 | --- | --- | --- | 340-102356 189.49 | 350-102356 220.87 |
| | 4X2 | --- | --- | --- | 340-102357 189.49 | 350-102357 220.87 |
| | 4X2-1/2 | --- | --- | --- | 340-102358 202.32 | 350-102358 234.83 |
| | 4X3 | --- | --- | --- | 340-102359 202.32 | --- |
| | 6X1-1/2 | --- | --- | --- | 340-102361 275.58 | 350-102361 287.19 |
| | 6X2 | --- | --- | --- | 340-102362 275.58 | 350-102362 287.19 |
| | 6X2-1/2 | --- | --- | --- | 340-102363 293.03 | 350-102363 299.97 |
| | 6X3 | --- | --- | --- | 340-102364 293.03 | 350-102364 299.97 |
| | 6X4 | --- | --- | --- | 340-102365 304.60 | 350-102365 316.24 |
| | 8X1-1/2 | --- | --- | --- | 340-102366 336.01 | 350-102366 409.26 |
| | 8X2 | --- | --- | --- | 340-102367 336.01 | 350-102367 409.26 |
| | 8X2-1/2 | --- | --- | --- | 340-102368 353.45 | 350-102368 426.69 |
| | 8X3 | --- | --- | --- | 340-102369 353.45 | 350-102369 426.69 |
| | 8X4 | --- | --- | --- | 340-102370 382.52 | 350-102370 444.12 |
| | 10X2 | --- | --- | --- | 340-102372 570.87 | 350-102372 623.20 |
| | 10X2-1/2 | --- | --- | --- | 340-102373 605.77 | --- |
| | 10X3 | --- | --- | --- | 340-102374 605.77 | 350-102374 653.43 |
| | 10X4 | --- | --- | --- | 340-102375 637.13 | 350-102375 687.17 |
| | 12X2 | --- | --- | --- | 340-102377 760.40 | 350-102377 818.52 |
| | 12X2-1/2 | --- | --- | --- | 340-102378 792.95 | --- |
| 12X3 | --- | --- | --- | 340-102379 792.95 | 350-102379 862.69 | |
| 12X4 | --- | --- | --- | 340-102380 830.18 | 350-102380 906.91 | |

Tee (Gasket x Gasket x Fipt)

| | | | | | | |
|---|---------|-----|-----|-----|-----------------------------|-----------------------------|
|  | 4X1-1/2 | --- | --- | --- | 340-102426 209.28 | 350-102426 229.06 |
| | 4X2 | --- | --- | --- | 340-102427 209.28 | 350-102427 229.06 |
| | 4X2-1/2 | --- | --- | --- | 340-102428 227.86 | 350-102428 246.48 |
| | 4X3 | --- | --- | --- | 340-102429 227.86 | 350-102429 246.48 |
| | 6X1-1/2 | --- | --- | --- | 340-102431 301.12 | 350-102431 316.24 |

Irrigation & Turf Product
PVC Class 63, 100, 125, 160 & 200 IPS Fabricated Fittings & Molded Class 125



| Size | CLASS 63 | CLASS 100 | CLASS 125 | CLASS 160 | CLASS 200 |
|------|---------------------------------------|---------------------------------------|---------------------------------------|---------------------------------------|---------------------------------------|
| | Prod Code: 340 Part Number MSRP | Prod Code: 350 Part Number MSRP | Prod Code: 360 Part Number MSRP | Prod Code: 370 Part Number MSRP | Prod Code: 380 Part Number MSRP |

Tee (Gasket x Gasket x Fipt) (continued)

| | | | | | | |
|------|----------|-----|-----|-----------------------------|-----------------------------|-----------------------------|
| | 6X2 | --- | --- | --- | 340-102432 301.12 | 350-102432 316.24 |
| | 6X2-1/2 | --- | --- | --- | 340-102433 312.76 | 350-102433 331.39 |
| | 6X3 | --- | --- | --- | 340-102434 312.76 | 350-102434 331.39 |
| | 6X4 | --- | --- | --- | 340-102435 322.06 | 350-102435 345.33 |
| | 8X1-1/2 | --- | --- | --- | 340-102436 368.59 | 350-102436 441.82 |
| | 8X2 | --- | --- | --- | 340-102437 368.59 | 350-102437 441.82 |
| | 8X2-1/2 | --- | --- | --- | 340-102438 390.66 | 350-102438 465.06 |
| | 8X3 | --- | --- | --- | 340-102439 390.66 | 350-102439 465.06 |
| | 8X4 | --- | --- | --- | 340-102440 415.07 | 350-102440 641.20 |
| | 10X2 | --- | --- | --- | 340-102442 624.35 | 350-102442 687.17 |
| | 10X2-1/2 | --- | --- | --- | 340-102443 653.43 | 350-102443 725.55 |
| | 10X3 | --- | --- | --- | 340-102444 653.43 | 350-102444 725.55 |
| | 10X4 | --- | --- | --- | 340-102445 689.44 | 350-102445 754.56 |
| | 12X2 | --- | --- | --- | 340-102447 805.40 | 350-102447 876.67 |
| | 12X2-1/2 | --- | --- | --- | 340-102448 845.27 | --- |
| | 12X3 | --- | --- | --- | 340-102449 845.27 | 350-102449 920.85 |
| 12X4 | --- | --- | --- | 340-102450 888.27 | 350-102450 965.04 | |

Tee (Socket x Socket x Socket)

| | | | | | | |
|--|-----|-----------------------------|-----------------------------|-----------------------------|-----------------------------|-----------------------------|
| | 6 | 310-102502 72.27 | 320-102502 145.69 | 330-102502 161.97 | 340-102502 285.59 | 350-102502 302.22 |
| | 6X2 | 310-102499 57.08 | 320-102499 75.75 | 330-102499 90.89 | 340-102499 226.69 | 350-102499 235.45 |
| | 6X3 | 310-102500 60.60 | 320-102500 85.06 | 330-102500 96.71 | 340-102500 241.20 | 350-102500 247.16 |
| | 6X4 | 310-102501 66.44 | 320-102501 93.25 | 330-102501 108.38 | 340-102501 249.94 | 350-102501 264.61 |
| | 8 | 310-102507 121.25 | 320-102507 184.15 | 330-102507 217.99 | 340-102507 447.66 | 350-102507 532.53 |
| | 8X2 | 310-102503 79.25 | 320-102503 100.23 | 330-102503 108.38 | 340-102503 288.35 | 350-102503 318.58 |
| | 8X3 | 310-102504 85.06 | 320-102504 111.86 | 330-102504 121.25 | 340-102504 323.23 | 350-102504 345.33 |
| | 8X4 | 310-102505 90.89 | 320-102505 127.00 | 330-102505 138.65 | 340-102505 341.83 | 350-102505 362.76 |
| | 8X6 | 310-102506 108.38 | 320-102506 163.18 | 330-102506 172.48 | 340-102506 396.48 | 350-102506 430.18 |
| | 10 | 310-102513 180.64 | 320-102513 256.38 | 330-102513 354.32 | 340-102513 695.27 | 350-102513 845.27 |

Made in the U.S.A.

Suitable for Oil-Free air handling to 25 psi, not for distribution of compressed air or gas
 See MSRP-1 Sheet or Check Spears® On-line Catalog @ www.spearsmfg.com for Pricing



Irrigation & Turf Product

PVC Class 63, 100, 125, 160 & 200 IPS Fabricated Fittings & Molded Class 125

| Size | CLASS 63 | CLASS 100 | CLASS 125 | CLASS 160 | CLASS 200 |
|------|---------------------------------------|---------------------------------------|---------------------------------------|---------------------------------------|---------------------------------------|
| | Prod Code: 340 Part Number MSRP | Prod Code: 350 Part Number MSRP | Prod Code: 360 Part Number MSRP | Prod Code: 370 Part Number MSRP | Prod Code: 380 Part Number MSRP |

Tee (Socket x Socket x Socket) (continued)

| | | | | | | |
|-------|-----------------------------------|-----------------------------------|----------------------|----------------------|----------------------|-----------------------|
| | 10X2 | 310-102508 108.38 | 320-102508 132.83 | 330-102508 170.15 | 340-102508 408.12 | 350-102508 485.98 |
| | 10X3 | 310-102509 127.00 | 320-102509 153.83 | 330-102509 200.47 | 340-102509 438.36 | 350-102509 517.37 |
| | 10X4 | 310-102510 144.54 | 320-102510 172.48 | 330-102510 226.09 | 340-102510 474.39 | 350-102510 555.75 |
| | 10X6 | 310-102511 157.35 | 320-102511 189.98 | 330-102511 250.55 | 340-102511 522.04 | 350-102511 611.55 |
| | 10X8 | 310-102512 167.83 | 320-102512 220.28 | 330-102512 298.36 | 340-102512 588.33 | 350-102512 687.17 |
| | 12 | 310-102520 248.24 | 320-102520 404.44 | 330-102520 531.47 | 340-102520 989.47 | 350-102520 1306.84 |
| | 12X2 | 310-102514 186.52 | 320-102514 200.47 | 330-102514 262.27 | 340-102514 539.46 | 350-102514 640.65 |
| | 12X3 | 310-102515 192.29 | 320-102515 212.13 | 330-102515 284.38 | 340-102515 575.55 | 350-102515 690.63 |
| | 12X4 | 310-102516 199.32 | 320-102516 236.60 | 330-102516 314.71 | 340-102516 615.07 | 350-102516 737.09 |
| | 12X6 | 310-102517 205.12 | 320-102517 270.40 | 330-102517 354.32 | 340-102517 683.68 | 350-102517 835.96 |
| | 12X8 | 310-102518 216.80 | 320-102518 298.36 | 330-102518 398.65 | 340-102518 761.55 | 350-102518 891.78 |
| | 12X10 | 310-102519 222.58 | 320-102519 356.66 | 330-102519 473.19 | 340-102519 851.09 | 350-102519 1044.09 |
| | 15X2 | 310-102521 ² 221.46 | --- | --- | --- | --- |
| | 15X3 | 310-102522 ² 233.09 | --- | --- | --- | --- |
| | 15X4 | 310-102523 ² 258.75 | --- | --- | --- | --- |
| | 15X6 | 310-102524 ² 264.58 | --- | --- | --- | --- |
| | 15X8 | 310-102525 ² 284.38 | --- | --- | --- | --- |
| | 15X10 | 310-102526 ² 298.36 | --- | --- | --- | --- |
| | 15X12 | 310-102527 ² 336.83 | --- | --- | --- | --- |
| 15X15 | 310-102528 ¹ 428.92 | --- | --- | --- | --- | |

¹ 15" PIP O.D.

² 15" PIP O.D. x IPS

Tee (Gasket x Spigot x Gasket)

| | | | | | | |
|--|-----|-----|----------------------|----------------------|----------------------|----------------------|
| | 4 | --- | 320-103058 116.54 | 330-103058 121.25 | 340-103058 221.46 | 350-103058 248.47 |
| | 6 | --- | 320-103062 169.01 | 330-103062 180.64 | 340-103062 342.98 | 350-103062 395.29 |
| | 6X4 | --- | 320-103061 144.54 | 330-103061 174.81 | 340-103061 304.60 | 350-103061 327.86 |
| | 8 | --- | 320-103067 233.62 | 330-103067 300.71 | 340-103067 509.26 | 350-103067 640.65 |
| | 8X4 | --- | 320-103065 182.35 | 330-103065 199.32 | 340-103065 380.18 | 350-103065 462.75 |
| | 8X6 | --- | 320-103066 212.13 | 330-103066 251.77 | 340-103066 420.89 | 350-103066 526.69 |

Irrigation & Turf Product
PVC Class 63, 100, 125, 160 & 200 IPS Fabricated Fittings & Molded Class 125




| Size | CLASS 63 | CLASS 100 | CLASS 125 | CLASS160 | CLASS 200 |
|------|---------------------------------------|---------------------------------------|---------------------------------------|---------------------------------------|---------------------------------------|
| | Prod Code: 340 Part Number MSRP | Prod Code: 350 Part Number MSRP | Prod Code: 360 Part Number MSRP | Prod Code: 370 Part Number MSRP | Prod Code: 380 Part Number MSRP |

Tee (Gasket x Spigot x Gasket) (continued)

| | | | | | | |
|---|-------|-----|-----------------------------|-----------------------------|------------------------------|------------------------------|
|  | 10 | --- | 320-103073 396.29 | 330-103073 481.38 | 340-103073 833.66 | 350-103073 1051.96 |
| | 10X4 | --- | 320-103070 272.73 | 330-103070 348.47 | 340-103070 559.27 | 350-103070 702.26 |
| | 10X6 | --- | 320-103071 300.71 | 330-103071 378.82 | 340-103071 611.55 | 350-103071 766.20 |
| | 10X8 | --- | 320-103072 334.52 | 330-103072 420.76 | 340-103072 687.17 | 350-103072 865.04 |
| | 12 | --- | 320-103080 554.80 | 330-103080 662.03 | --- | --- |
| | 12X4 | --- | 320-103076 368.32 | 330-103076 451.12 | 340-103076 731.31 | 350-103076 918.49 |
| | 12X6 | --- | 320-103077 392.79 | 330-103077 456.89 | 340-103077 804.58 | 350-103077 1011.55 |
| | 12X8 | --- | 320-103078 434.74 | 330-103078 481.38 | 340-103078 891.78 | 350-103078 1110.36 |
| | 12X10 | --- | 320-103079 495.37 | 330-103079 540.83 | 340-103079 1009.22 | 350-103079 1256.85 |
| | 12X12 | --- | --- | --- | 340-103080 1183.57 | --- |

Tee (Gasket x Gasket x Gasket)

| | | | | | | |
|---|-------|-----|-----------------------------|-----------------------------|------------------------------|------------------------------|
|  | 4 | --- | 320-103170 139.85 | 330-103170 191.08 | 340-103170 219.76 | 350-103170 272.07 |
| | 6 | --- | 320-103174 163.18 | 330-103174 216.80 | 340-103174 366.24 | 350-103174 397.61 |
| | 6X4 | --- | 320-103173 144.54 | 330-103173 205.12 | 340-103173 316.24 | 350-103173 339.49 |
| | 8 | --- | 320-103179 289.04 | 330-103179 312.76 | 340-103179 570.87 | 350-103179 673.19 |
| | 8X4 | --- | 320-103177 216.80 | 330-103177 241.26 | 340-103177 447.66 | 350-103177 497.60 |
| | 8X6 | --- | 320-103178 222.58 | 330-103178 272.73 | 340-103178 497.60 | 350-103178 549.98 |
| | 10 | --- | 320-103185 420.76 | 330-103185 529.14 | 340-103185 935.96 | 350-103185 1098.76 |
| | 10X4 | --- | 320-103182 322.86 | 330-103182 400.95 | 340-103182 702.26 | 350-103182 716.20 |
| | 10X6 | --- | 320-103183 346.18 | 330-103183 418.42 | 340-103183 745.28 | 350-103183 777.87 |
| | 10X8 | --- | 320-103184 376.47 | 330-103184 487.22 | 340-103184 833.66 | 350-103184 876.67 |
| | 12 | --- | 320-103192 585.13 | 330-103192 765.77 | 340-103192 1301.06 | 350-103192 1519.65 |
| | 12X4 | --- | 320-103188 412.58 | 330-103188 487.22 | 340-103188 891.78 | 350-103188 932.47 |
| | 12X6 | --- | 320-103189 423.12 | 330-103189 501.17 | 340-103189 974.32 | 350-103189 1031.31 |
| | 12X8 | --- | 320-103190 445.26 | 330-103190 601.45 | 340-103190 1067.56 | 350-103190 1127.79 |
| | 12X10 | --- | 320-103191 529.14 | 330-103191 641.08 | 340-103191 1198.77 | 350-103191 1276.62 |



Irrigation & Turf Product
PVC Class 63, 100, 125, 160 & 200 IPS Fabricated Fittings & Molded Class 125

| | Size | CLASS 63 | CLASS 100 | CLASS 125 | CLASS 160 | CLASS 200 |
|--|------|---------------------------------------|---------------------------------------|---------------------------------------|---------------------------------------|---------------------------------------|
| | | Prod Code: 340 Part Number MSRP | Prod Code: 350 Part Number MSRP | Prod Code: 360 Part Number MSRP | Prod Code: 370 Part Number MSRP | Prod Code: 380 Part Number MSRP |

Reinforced Tee (Socket x Socket x Fipt)

| | | | | | | |
|--|------|-----|-----|-----------------------------|-----|-----|
| | 6X2 | --- | --- | 330-202152 81.59 | --- | --- |
| | 6X3 | --- | --- | 330-202154 93.25 | --- | --- |
| | 6X4 | --- | --- | 330-202155 106.03 | --- | --- |
| | 8X2 | --- | --- | 330-202157 117.71 | --- | --- |
| | 8X3 | --- | --- | 330-202159 137.52 | --- | --- |
| | 8X4 | --- | --- | 330-202160 150.31 | --- | --- |
| | 10X2 | --- | --- | 330-202162 181.79 | --- | --- |
| | 10X3 | --- | --- | 330-202164 212.13 | --- | --- |
| | 10X4 | --- | --- | 330-202165 231.92 | --- | --- |
| | 12X2 | --- | --- | 330-202167 262.27 | --- | --- |
| | 12X3 | --- | --- | 330-202169 292.57 | --- | --- |
| | 12X4 | --- | --- | 330-202170 322.86 | --- | --- |

Reinforced Tee (Socket x Spigot x Fipt)

| | | | | | | |
|--|------|-----|-----|-----------------------------|-----|-----|
| | 6X2 | --- | --- | 330-202222 81.59 | --- | --- |
| | 6X3 | --- | --- | 330-202224 93.25 | --- | --- |
| | 6X4 | --- | --- | 330-202225 106.03 | --- | --- |
| | 8X2 | --- | --- | 330-202227 116.54 | --- | --- |
| | 8X3 | --- | --- | 330-202229 130.48 | --- | --- |
| | 8X4 | --- | --- | 330-202230 143.32 | --- | --- |
| | 10X2 | --- | --- | 330-202232 172.48 | --- | --- |
| | 10X3 | --- | --- | 330-202234 201.61 | --- | --- |
| | 10X4 | --- | --- | 330-202235 222.58 | --- | --- |
| | 12X2 | --- | --- | 330-202237 249.41 | --- | --- |
| | 12X3 | --- | --- | 330-202239 278.57 | --- | --- |
| | 12X4 | --- | --- | 330-202240 310.05 | --- | --- |

Irrigation & Turf Product
PVC Class 63, 100, 125, 160 & 200 IPS Fabricated Fittings & Molded Class 125



| Size | CLASS 63 | CLASS 100 | CLASS 125 | CLASS 160 | CLASS 200 |
|------|---------------------------------------|---------------------------------------|---------------------------------------|---------------------------------------|---------------------------------------|
| | Prod Code: 340 Part Number MSRP | Prod Code: 350 Part Number MSRP | Prod Code: 360 Part Number MSRP | Prod Code: 370 Part Number MSRP | Prod Code: 380 Part Number MSRP |

Reinforced Tee (Gasket x Spigot x Fipt)

| | | | | | | |
|--|------|-----|-----|-----------------------------|-----|-----|
| | 6X2 | --- | --- | 330-202362 139.85 | --- | --- |
| | 6X3 | --- | --- | 330-202364 159.64 | --- | --- |
| | 6X4 | --- | --- | 330-202365 169.01 | --- | --- |
| | 8X2 | --- | --- | 330-202367 174.81 | --- | --- |
| | 8X3 | --- | --- | 330-202369 186.52 | --- | --- |
| | 8X4 | --- | --- | 330-202370 199.32 | --- | --- |
| | 10X2 | --- | --- | 330-202372 264.58 | --- | --- |
| | 10X3 | --- | --- | 330-202374 285.55 | --- | --- |
| | 10X4 | --- | --- | 330-202375 313.53 | --- | --- |
| | 12X2 | --- | --- | 330-202377 361.31 | --- | --- |
| | 12X3 | --- | --- | 330-202379 391.61 | --- | --- |
| | 12X4 | --- | --- | 330-202380 420.76 | --- | --- |

Reinforced Tee (Gasket x Gasket x Fipt)

| | | | | | | |
|--|------|-----|-----|-----------------------------|-----|-----|
| | 6X2 | --- | --- | 330-202432 169.01 | --- | --- |
| | 6X3 | --- | --- | 330-202434 180.64 | --- | --- |
| | 6X4 | --- | --- | 330-202435 192.29 | --- | --- |
| | 8X2 | --- | --- | 330-202437 210.96 | --- | --- |
| | 8X3 | --- | --- | 330-202439 222.58 | --- | --- |
| | 8X4 | --- | --- | 330-202440 241.26 | --- | --- |
| | 10X2 | --- | --- | 330-202442 328.69 | --- | --- |
| | 10X3 | --- | --- | 330-202444 346.18 | --- | --- |
| | 10X4 | --- | --- | 330-202445 382.29 | --- | --- |
| | 12X2 | --- | --- | 330-202447 445.26 | --- | --- |
| | 12X3 | --- | --- | 330-202449 487.22 | --- | --- |
| | 12X4 | --- | --- | 330-202450 509.40 | --- | --- |

90° Elbow (Socket x Socket)

| | | | | | | |
|--|---|-----------------------------|-----------------------------|-----------------------------|-----------------------------|-----------------------------|
| | 6 | 310-100812 79.25 | 320-100812 102.53 | 330-100812 114.20 | 340-100812 294.15 | 350-100812 318.58 |
| | 8 | 310-100813 108.38 | 320-100813 157.35 | 330-100813 187.62 | 340-100813 408.12 | 350-100813 462.75 |

Made in the U.S.A.

Suitable for Oil-Free air handling to 25 psi, not for distribution of compressed air or gas
 See MSRP-1 Sheet or Check Spears® On-line Catalog @ www.spearsmfg.com for Pricing



Irrigation & Turf Product
PVC Class 63, 100, 125, 160 & 200 IPS Fabricated Fittings & Molded Class 125

| | Size | CLASS 63 | CLASS 100 | CLASS 125 | CLASS 160 | CLASS 200 |
|--|------|---------------------------------------|---------------------------------------|---------------------------------------|---------------------------------------|---------------------------------------|
| | | Prod Code: 340 Part Number MSRP | Prod Code: 350 Part Number MSRP | Prod Code: 360 Part Number MSRP | Prod Code: 370 Part Number MSRP | Prod Code: 380 Part Number MSRP |

90° Elbow (Socket x Socket) (continued)

| | | | | | | |
|--|----|--|-----------------------------|-----------------------------|-----------------------------|------------------------------|
| | 10 | 310-100814 169.01 | 320-100814 245.93 | 330-100814 297.21 | 340-100814 620.88 | 350-100814 762.71 |
| | 12 | 310-100815 241.26 | 320-100815 342.64 | 330-100815 454.58 | 340-100815 899.91 | 350-100815 1023.18 |
| | 15 | 310-100816 ¹ 451.12 | --- | --- | --- | --- |

¹ 15" PIP O.D.

90° Elbow (Gasket x Spigot)

| | | | | | | |
|--|----|-----|-----------------------------|-----------------------------|------------------------------|------------------------------|
| | 4 | --- | --- | 330-100877 177.00 | --- | --- |
| | 6 | --- | 320-100878 207.48 | 330-100878 238.94 | 340-100878 389.47 | 350-100878 409.26 |
| | 8 | --- | 320-100879 314.71 | 330-100879 385.82 | 340-100879 555.75 | 350-100879 596.47 |
| | 10 | --- | 320-100880 458.07 | 330-100880 607.23 | 340-100880 804.58 | 350-100880 982.45 |
| | 12 | --- | 320-100881 614.26 | 330-100881 723.83 | 340-100881 1081.34 | 350-100881 1242.91 |

90° Elbow (Gasket x Gasket)

| | | | | | | |
|--|----|-----|-----------------------------|-----------------------------|-----------------------------|------------------------------|
| | 4 | --- | --- | 330-100899 177.00 | 340-100899 263.92 | 350-100899 293.03 |
| | 6 | --- | 320-100900 207.48 | 330-100900 238.94 | 340-100900 389.47 | 350-100900 409.26 |
| | 8 | --- | 320-100901 314.71 | 330-100901 385.82 | 340-100901 555.75 | 350-100901 596.47 |
| | 10 | --- | 320-100902 458.07 | 330-100902 607.23 | 340-100902 804.58 | 350-100902 982.45 |
| | 12 | --- | 320-100903 614.26 | 330-100903 723.83 | 3406-1202 900.63 | 350-100903 1242.91 |

11-1/4° Elbow (Socket x Socket)

| | | | | | | |
|--|----|-----------------------------|-----------------------------|-----------------------------|-----------------------------|-----------------------------|
| | 4 | --- | --- | 330-100113 33.76 | 340-100113 37.38 | 350-100113 44.84 |
| | 6 | 310-100114 30.25 | 320-100114 39.64 | 330-100114 47.76 | 340-100114 52.31 | 350-100114 55.79 |
| | 8 | 310-100115 47.76 | 320-100115 60.60 | 330-100115 94.37 | 340-100115 90.68 | 350-100115 102.31 |
| | 10 | 310-100116 67.57 | 320-100116 96.71 | 330-100116 134.04 | 340-100116 156.98 | 350-100116 210.40 |
| | 12 | 310-100117 109.51 | 320-100117 151.53 | 330-100117 217.99 | 340-100117 246.48 | 350-100117 351.15 |
| | 15 | 310-100118 184.15 | --- | --- | --- | --- |

11-1/4° Elbow (Gasket x Spigot)

| | | | | | | |
|--|----|-----|-----------------------------|-----------------------------|-----------------------------|-----------------------------|
| | 4 | --- | --- | 330-100185 121.25 | 340-100185 134.55 | 350-100185 165.57 |
| | 6 | --- | 320-100186 135.19 | 330-100186 169.01 | 340-100186 186.87 | 350-100186 204.63 |
| | 8 | --- | 320-100187 165.51 | 330-100187 252.93 | 340-100187 274.06 | 350-100187 330.20 |
| | 10 | --- | 320-100188 283.25 | 330-100188 336.83 | 340-100188 389.47 | 350-100188 573.17 |
| | 12 | --- | 320-100189 378.82 | 330-100189 456.89 | 340-100189 567.40 | 350-100189 789.48 |

Irrigation & Turf Product
PVC Class 63, 100, 125, 160 & 200 IPS Fabricated Fittings & Molded Class 125



| | Size | CLASS 63 | CLASS 100 | CLASS 125 | CLASS 160 | CLASS 200 |
|--|------|---------------------------------------|---------------------------------------|---------------------------------------|---------------------------------------|---------------------------------------|
| | | Prod Code: 340 Part Number MSRP | Prod Code: 350 Part Number MSRP | Prod Code: 360 Part Number MSRP | Prod Code: 370 Part Number MSRP | Prod Code: 380 Part Number MSRP |

11-1/4° Elbow (Gasket x Gasket)

| | | | | | | |
|--|----|-----|-----------------------------|-----------------------------|-----------------------------|-----------------------------|
| | 4 | --- | --- | 330-100209 121.25 | 340-100209 134.55 | 350-100209 165.57 |
| | 6 | --- | 320-100210 135.19 | 330-100210 169.01 | 340-100210 186.87 | 350-100210 204.63 |
| | 8 | --- | 320-100211 165.51 | 330-100211 252.93 | 340-100211 274.06 | 350-100211 330.20 |
| | 10 | --- | 320-100212 283.25 | 330-100212 336.83 | 340-100212 389.47 | 350-100212 573.17 |
| | 12 | --- | 320-100213 378.82 | 330-100213 456.89 | 340-100213 567.40 | 350-100213 789.48 |

15° Elbow (Socket x Socket)

| | | | | | | |
|--|----|--|-----------------------------|-----------------------------|-----------------------------|-----------------------------|
| | 4 | --- | --- | 330-100233 33.76 | 340-100233 37.38 | 350-100233 44.84 |
| | 6 | 310-100234 30.25 | 320-100234 39.64 | 330-100234 47.76 | 340-100234 52.31 | 350-100234 55.79 |
| | 8 | 310-100235 47.76 | 320-100235 60.60 | 330-100235 73.39 | 340-100235 90.68 | 350-100235 104.32 |
| | 10 | 310-100236 67.57 | 320-100236 96.71 | 330-100236 134.04 | 340-100236 156.98 | 350-100236 210.40 |
| | 12 | 310-100237 109.51 | 320-100237 151.53 | 330-100237 217.99 | 340-100237 246.48 | 350-100237 351.15 |
| | 15 | 310-100238 ¹ 184.15 | --- | --- | --- | --- |

¹ 15" PIP O.D.

15° Elbow (Gasket x Spigot)

| | | | | | | |
|--|----|-----|-----------------------------|-----------------------------|-----------------------------|-----------------------------|
| | 4 | --- | --- | 330-100305 121.25 | 340-100305 134.55 | 350-100305 165.57 |
| | 6 | --- | 320-100306 135.19 | 330-100306 169.01 | 340-100306 186.87 | 350-100306 204.63 |
| | 8 | --- | 320-100307 165.51 | 330-100307 252.93 | 340-100307 274.06 | 350-100307 330.20 |
| | 10 | --- | 320-100308 283.25 | 330-100308 336.83 | 340-100308 389.47 | 350-100308 573.17 |
| | 12 | --- | 320-100309 378.82 | 330-100309 456.89 | 340-100309 567.40 | 350-100309 789.48 |

15° Elbow (Gasket x Gasket)

| | | | | | | |
|--|----|-----|-----------------------------|-----------------------------|-----------------------------|-----------------------------|
| | 4 | --- | --- | 330-100329 121.25 | 340-100329 134.55 | 350-100329 165.57 |
| | 6 | --- | 320-100330 135.19 | 330-100330 169.01 | 340-100330 186.87 | 350-100330 204.63 |
| | 8 | --- | 320-100331 177.89 | 330-100331 252.93 | 340-100331 274.06 | 350-100331 330.20 |
| | 10 | --- | 320-100332 263.75 | 330-100332 336.83 | 340-100332 389.47 | 350-100332 573.17 |
| | 12 | --- | 320-100333 380.32 | 330-100333 456.89 | 340-100333 567.40 | 350-100333 789.48 |

22-1/2° Elbow (Socket x Socket)

| | | | | | | |
|--|---|----------------------------|----------------------------|----------------------------|----------------------------|-----------------------------|
| | 4 | --- | --- | 330-100353 33.76 | 340-100353 37.38 | 350-100353 44.84 |
| | 6 | 310-100354 30.25 | 320-100354 39.64 | 330-100354 47.76 | 340-100354 52.31 | 350-100354 55.79 |
| | 8 | 310-100355 47.76 | 320-100355 60.60 | 330-100355 73.39 | 340-100355 90.68 | 350-100355 104.32 |



Irrigation & Turf Product
PVC Class 63, 100, 125, 160 & 200 IPS Fabricated Fittings & Molded Class 125

| | Size | CLASS 63 | CLASS 100 | CLASS 125 | CLASS 160 | CLASS 200 |
|--|------|---------------------------------------|---------------------------------------|---------------------------------------|---------------------------------------|---------------------------------------|
| | | Prod Code: 340 Part Number MSRP | Prod Code: 350 Part Number MSRP | Prod Code: 360 Part Number MSRP | Prod Code: 370 Part Number MSRP | Prod Code: 380 Part Number MSRP |

22-1/2° Elbow (Socket x Socket) (continued)

| | | | | | | |
|--|----|--|-----------------------------|-----------------------------|-----------------------------|-----------------------------|
| | 10 | 310-100356 67.57 | 320-100356 96.71 | 330-100356 134.04 | 340-100356 156.98 | 350-100356 210.40 |
| | 12 | 310-100357 109.51 | 320-100357 151.53 | 330-100357 217.99 | 340-100357 246.48 | 350-100357 351.15 |
| | 15 | 310-100358 ¹ 184.15 | --- | --- | --- | --- |

¹ 15" PIP O.D.

22-1/2° Elbow (Gasket x Spigot)

| | | | | | | |
|--|----|-----|-----------------------------|-----------------------------|-----------------------------|-----------------------------|
| | 4 | --- | --- | 330-100425 121.25 | 340-100425 134.55 | 350-100425 165.57 |
| | 6 | --- | 320-100426 135.19 | 330-100426 169.01 | 340-100426 186.87 | 350-100426 204.63 |
| | 8 | --- | 320-100427 165.51 | 330-100427 252.93 | 340-100427 274.06 | 350-100427 330.20 |
| | 10 | --- | 320-100428 283.25 | 330-100428 336.83 | 340-100428 389.47 | 350-100428 573.17 |
| | 12 | --- | 320-100429 378.82 | 330-100429 456.89 | 340-100429 567.40 | 350-100429 789.48 |

22-1/2° Elbow (Gasket x Gasket)

| | | | | | | |
|--|----|-----|-----------------------------|-----------------------------|-----------------------------|-----------------------------|
| | 4 | --- | --- | 330-100449 121.25 | 340-100449 134.55 | 350-100449 165.57 |
| | 6 | --- | 320-100450 135.19 | 330-100450 169.01 | 340-100450 186.87 | 350-100450 204.63 |
| | 8 | --- | 320-100451 165.51 | 330-100451 252.93 | 340-100451 274.06 | 350-100451 330.20 |
| | 10 | --- | 320-100452 283.25 | 330-100452 336.83 | 340-100452 389.47 | 350-100452 573.17 |
| | 12 | --- | 320-100453 378.82 | 330-100453 456.89 | 340-100453 567.40 | 350-100453 789.48 |

30° Elbow (Socket x Socket)

| | | | | | | |
|--|----|-----------------------------|-----------------------------|-----------------------------|-----------------------------|-----------------------------|
| | 4 | --- | --- | 330-100473 41.94 | 340-100473 88.31 | 350-100473 146.81 |
| | 6 | 310-100474 41.94 | 320-100474 52.46 | 330-100474 59.42 | 340-100474 216.26 | 350-100474 261.36 |
| | 8 | 310-100475 61.74 | 320-100475 87.41 | 330-100475 92.05 | 340-100475 294.15 | 350-100475 351.15 |
| | 10 | 310-100476 89.75 | 320-100476 134.04 | 330-100476 189.98 | 340-100476 455.78 | 350-100476 549.98 |
| | 12 | 310-100477 145.69 | 320-100477 195.80 | 330-100477 278.57 | 340-100477 660.40 | 350-100477 768.54 |
| | 15 | 310-100478 217.99 | --- | --- | --- | --- |

30° Elbow (Gasket x Spigot)

| | | | | | | |
|--|----|-----|-----------------------------|-----------------------------|-----------------------------|-----------------------------|
| | 4 | --- | --- | 330-100545 139.13 | 340-100545 167.42 | 350-100545 175.56 |
| | 6 | --- | 320-100546 180.64 | 330-100546 192.29 | 340-100546 248.82 | 350-100546 304.60 |
| | 8 | --- | 320-100547 222.58 | 330-100547 270.40 | 340-100547 366.24 | 350-100547 453.43 |
| | 10 | --- | 320-100548 313.53 | 330-100548 397.42 | 340-100548 608.07 | 350-100548 756.95 |
| | 12 | --- | 320-100549 433.61 | 330-100549 576.95 | 340-100549 804.58 | 350-100549 949.93 |

Irrigation & Turf Product
PVC Class 63, 100, 125, 160 & 200 IPS Fabricated Fittings & Molded Class 125



| | Size | CLASS 63 | CLASS 100 | CLASS 125 | CLASS 160 | CLASS 200 |
|--|------|---------------------------------------|---------------------------------------|---------------------------------------|---------------------------------------|---------------------------------------|
| | | Prod Code: 340 Part Number MSRP | Prod Code: 350 Part Number MSRP | Prod Code: 360 Part Number MSRP | Prod Code: 370 Part Number MSRP | Prod Code: 380 Part Number MSRP |

30° Elbow (Gasket x Gasket)

| | | | | | | |
|--|----|-----|-----------------------------|-----------------------------|-----------------------------|-----------------------------|
| | 4 | --- | --- | 330-100569 139.13 | 340-100569 167.42 | 350-100569 175.56 |
| | 6 | --- | 320-100570 180.64 | 330-100570 192.29 | 340-100570 248.82 | 350-100570 304.60 |
| | 8 | --- | 320-100571 222.58 | 330-100571 270.40 | 340-100571 366.24 | 350-100571 453.43 |
| | 10 | --- | 320-100572 313.53 | 330-100572 397.42 | 340-100572 608.07 | 350-100572 756.95 |
| | 12 | --- | 320-100573 433.61 | 330-100573 576.95 | 340-100573 804.58 | 350-100573 949.93 |

45° Elbow (Socket x Socket)

| | | | | | | |
|--|----|--|-----------------------------|-----------------------------|-----------------------------|-----------------------------|
| | 6 | 310-100592 41.94 | 320-100592 52.46 | 330-100592 59.42 | 340-100592 216.26 | 350-100592 225.54 |
| | 8 | 310-100593 61.74 | 320-100593 87.41 | 330-100593 92.05 | 340-100593 294.15 | 350-100593 351.15 |
| | 10 | 310-100594 89.75 | 320-100594 134.04 | 330-100594 189.98 | 340-100594 455.78 | 350-100594 549.98 |
| | 12 | 310-100595 145.69 | 320-100595 195.80 | 330-100595 278.57 | 340-100595 660.40 | 350-100595 768.54 |
| | 15 | 310-100596 ¹ 217.99 | --- | --- | --- | --- |

¹ 15" PIP O.D.

45° Elbow (Gasket x Spigot)

| | | | | | | |
|--|----|-----|-----------------------------|-----------------------------|-----------------------------|-----------------------------|
| | 4 | --- | --- | 330-100657 139.13 | 340-100657 167.42 | 350-100657 175.56 |
| | 6 | --- | 320-100658 141.09 | 330-100658 192.29 | 340-100658 248.82 | 350-100658 304.60 |
| | 8 | --- | 320-100659 199.97 | 330-100659 270.40 | 340-100659 366.24 | 350-100659 453.43 |
| | 10 | --- | 320-100660 287.06 | 330-100660 397.42 | 340-100660 608.07 | 350-100660 755.13 |
| | 12 | --- | 320-100661 408.54 | 330-100661 576.95 | 340-100661 804.58 | 350-100661 949.93 |

45° Elbow (Gasket x Gasket)

| | | | | | | |
|--|----|-----|-----------------------------|-----------------------------|-----------------------------|-----------------------------|
| | 4 | --- | --- | 330-100679 139.13 | 340-100679 167.42 | 350-100679 175.56 |
| | 6 | --- | 320-100680 141.09 | 330-100680 192.29 | 340-100680 248.82 | 350-100680 304.60 |
| | 8 | --- | 320-100681 199.97 | 330-100681 270.40 | 340-100681 366.24 | 350-100681 453.43 |
| | 10 | --- | 320-100682 287.06 | 330-100682 397.42 | 340-100682 608.07 | 350-100682 756.95 |
| | 12 | --- | 320-100683 433.58 | 330-100683 576.95 | 340-100683 804.58 | 350-100683 949.93 |

60° Elbow (Socket x Socket)

| | | | | | | |
|--|----|-----------------------------|-----------------------------|-----------------------------|-----------------------------|-----------------------------|
| | 4 | --- | --- | 330-100701 75.01 | --- | --- |
| | 6 | 310-100702 79.25 | 320-100702 102.53 | 330-100702 114.20 | 340-100702 294.15 | 350-100702 318.58 |
| | 8 | 310-100703 108.38 | 320-100703 157.35 | 330-100703 187.62 | 340-100703 408.12 | 350-100703 462.75 |
| | 10 | 310-100704 169.01 | 320-100704 245.93 | 330-100704 297.21 | 340-100704 620.88 | 350-100704 762.71 |

Made in the U.S.A.

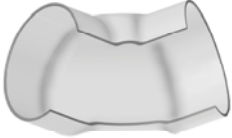
Suitable for Oil-Free air handling to 25 psi, not for distribution of compressed air or gas
 See MSRP-1 Sheet or Check Spears® On-line Catalog @ www.spearsmfg.com for Pricing



Irrigation & Turf Product
PVC Class 63, 100, 125, 160 & 200 IPS Fabricated Fittings & Molded Class 125


| | Size | CLASS 63 | CLASS 100 | CLASS 125 | CLASS 160 | CLASS 200 |
|--|------|---------------------------------------|---------------------------------------|---------------------------------------|---------------------------------------|---------------------------------------|
| | | Prod Code: 340 Part Number MSRP | Prod Code: 350 Part Number MSRP | Prod Code: 360 Part Number MSRP | Prod Code: 370 Part Number MSRP | Prod Code: 380 Part Number MSRP |

60° Elbow (Socket x Socket) (continued)


| | | | | | | |
|--|----|-----------------------------------|----------------------|----------------------|----------------------|-----------------------|
|  | 12 | 310-100705 241.26 | 320-100705 342.64 | 330-100705 454.58 | 340-100705 899.91 | 350-100705 1023.18 |
| | 15 | 310-100706 ¹ 451.12 | --- | --- | --- | --- |

¹ 15" PIP O.D.


60° Elbow (Gasket x Spigot)

| | | | | | | |
|--|----|-----|----------------------|----------------------|-----------------------|-----------------------|
|  | 4 | --- | --- | 330-100767 177.00 | 340-100767 263.92 | 350-100767 293.03 |
| | 6 | --- | 320-100768 207.48 | 330-100768 238.94 | 340-100768 389.47 | 350-100768 409.26 |
| | 8 | --- | 320-100769 314.71 | 330-100769 385.82 | 340-100769 555.75 | 350-100769 596.47 |
| | 10 | --- | 320-100770 458.07 | 330-100770 607.23 | 340-100770 804.58 | 350-100770 982.45 |
| | 12 | --- | 320-100771 614.26 | 330-100771 723.83 | 340-100771 1081.34 | 350-100771 1242.91 |

60° Elbow (Gasket x Gasket)


| | | | | | | |
|---|----|-----|----------------------|----------------------|-----------------------|-----------------------|
|  | 4 | --- | --- | 330-100789 177.00 | 340-100789 263.92 | 350-100789 293.03 |
| | 6 | --- | 320-100790 207.48 | 330-100790 238.94 | 340-100790 389.47 | 350-100790 409.26 |
| | 8 | --- | 320-100791 314.71 | 330-100791 385.82 | 340-100791 555.75 | 350-100791 596.47 |
| | 10 | --- | 320-100792 458.07 | 330-100792 607.23 | 340-100792 804.58 | 350-100792 982.45 |
| | 12 | --- | 320-100793 614.26 | 330-100793 723.83 | 340-100793 1081.34 | 350-100793 1242.91 |

Coupling (Socket x Socket)

| | | | | | | |
|---|----|-----------------------------------|----------------------|----------------------|----------------------|----------------------|
|  | 6 | 310-100002 22.15 | 320-100002 26.77 | 330-100002 30.25 | 340-100002 36.02 | 350-100002 44.20 |
| | 8 | 310-100003 38.44 | 320-100003 46.60 | 330-100003 50.13 | 340-100003 66.31 | 350-100003 84.86 |
| | 10 | 310-100004 45.46 | 320-100004 76.92 | 330-100004 92.05 | 340-100004 105.28 | 350-100004 184.87 |
| | 12 | 310-100005 69.93 | 320-100005 120.03 | 330-100005 148.04 | 340-100005 168.60 | 350-100005 277.88 |
| | 15 | 310-100006 ¹ 104.91 | --- | --- | --- | --- |

¹ 15" PIP O.D.

Coupling (Gasket x Spigot)

| | | | | | | |
|--|----|-----|----------------------|----------------------|----------------------|----------------------|
|  | 4 | --- | 320-100067 40.77 | 330-100067 52.46 | 340-100067 58.54 | 350-100067 70.88 |
| | 6 | --- | 320-100068 64.06 | 330-100068 69.93 | 340-100068 94.19 | 350-100068 99.99 |
| | 8 | --- | 320-100069 103.72 | 330-100069 125.84 | 340-100069 150.00 | 350-100069 167.42 |
| | 10 | --- | 320-100070 137.52 | 330-100070 167.83 | 340-100070 219.76 | 350-100070 277.88 |
| | 12 | --- | 320-100071 189.98 | 330-100071 228.44 | 340-100071 330.20 | 350-100071 397.61 |

Irrigation & Turf Product
PVC Class 63, 100, 125, 160 & 200 IPS Fabricated Fittings & Molded Class 125



| | Size | CLASS 63 | CLASS 100 | CLASS 125 | CLASS 160 | CLASS 200 |
|--|------|---------------------------------------|---------------------------------------|---------------------------------------|---------------------------------------|---------------------------------------|
| | | Prod Code: 340 Part Number MSRP | Prod Code: 350 Part Number MSRP | Prod Code: 360 Part Number MSRP | Prod Code: 370 Part Number MSRP | Prod Code: 380 Part Number MSRP |

Coupling (Gasket x Gasket)

| | | | | | | |
|--|----|-----|-----------------------------|-----------------------------|-----------------------------|-----------------------------|
| | 4 | --- | 320-100089 64.06 | 330-100089 75.75 | 340-100089 83.03 | 350-100089 91.33 |
| | 6 | --- | 320-100090 96.71 | 330-100090 108.38 | 340-100090 113.89 | 350-100090 144.16 |
| | 8 | --- | 320-100091 144.54 | 330-100091 157.35 | 340-100091 170.56 | 350-100091 190.68 |
| | 10 | --- | 320-100092 205.12 | 330-100092 228.44 | 340-100092 275.58 | 350-100092 330.20 |
| | 12 | --- | 320-100093 270.40 | 330-100093 313.53 | 340-100093 362.76 | 350-100093 491.79 |

Reducer Coupling (Socket x Socket)

| | | | | | | |
|--|-------|--|-----------------------------|-----------------------------|-----------------------------|-----------------------------|
| | 6X4 | 310-100926 30.25 | 320-100926 33.76 | 330-100926 38.44 | 340-100926 40.65 | 350-100926 51.15 |
| | 8X6 | 310-100928 39.64 | 320-100928 53.58 | 330-100928 59.42 | 340-100928 65.09 | 350-100928 70.88 |
| | 10X8 | 310-100931 55.93 | 320-100931 106.44 | 330-100931 95.56 | 340-100931 120.91 | 350-100931 144.16 |
| | 12X10 | 310-100935 97.93 | 320-100935 145.69 | 330-100935 181.79 | 340-100935 222.06 | 350-100935 237.19 |
| | 15X12 | 310-100940 ¹ 184.15 | --- | --- | --- | --- |

¹ 15" PIP O.D. x IPS

Reducer Coupling (Gasket x Spigot)

| | | | | | | |
|--|-------|-----|-----------------------------|-----------------------------|-----------------------------|-----------------------------|
| | 6X4 | --- | 320-101310 96.51 | 330-101310 114.20 | 340-101310 133.67 | 350-101310 147.65 |
| | 8X6 | --- | 320-101312 138.65 | 330-101312 169.01 | 340-101312 208.09 | 350-101312 231.38 |
| | 10X8 | --- | 320-101315 192.29 | 330-101315 228.44 | 340-101315 286.03 | 350-101315 325.54 |
| | 12X10 | --- | 320-101319 272.73 | 330-101319 328.69 | 340-101319 462.75 | 350-101319 522.04 |

Reducer Coupling (Spigot x Gasket)

| | | | | | | |
|--|-------|-----|-----------------------------|-----------------------------|-----------------------------|-----------------------------|
| | 6X4 | --- | 320-101383 90.89 | 330-101383 102.53 | 340-101383 111.63 | 350-101383 127.87 |
| | 8X6 | --- | 320-101385 121.25 | 330-101385 144.54 | 340-101385 184.87 | 350-101385 210.40 |
| | 10X8 | --- | 320-101388 180.64 | 330-101388 222.58 | 340-101388 268.60 | 350-101388 316.24 |
| | 12X10 | --- | 320-101392 270.40 | 330-101392 310.05 | 340-101392 436.00 | 350-101392 511.57 |

Reducer Coupling (Gasket x Gasket)

| | | | | | | |
|--|-------|-----|-----------------------------|-----------------------------|-----------------------------|-----------------------------|
| | 6X4 | --- | 320-101456 121.25 | 330-101456 132.83 | 340-101456 156.98 | 350-101456 172.06 |
| | 8X6 | --- | 320-101458 174.81 | 330-101458 192.29 | 340-101458 252.28 | 350-101458 275.58 |
| | 10X8 | --- | 320-101461 241.26 | 330-101461 300.71 | 340-101461 360.39 | 350-101461 526.69 |
| | 12X10 | --- | 320-101465 334.52 | 330-101465 378.82 | 340-101465 478.53 | 350-101465 783.66 |



Irrigation & Turf Product

PVC Class 63, 100, 125, 160 & 200 IPS Fabricated Fittings & Molded Class 125

| Size | CLASS 63 | CLASS 100 | CLASS 125 | CLASS 160 | CLASS 200 |
|------|---------------------------------------|---------------------------------------|---------------------------------------|---------------------------------------|---------------------------------------|
| | Prod Code: 340 Part Number MSRP | Prod Code: 350 Part Number MSRP | Prod Code: 360 Part Number MSRP | Prod Code: 370 Part Number MSRP | Prod Code: 380 Part Number MSRP |

Repair Coupling (Gasket x Gasket)

| | | | | | | |
|--|----|-----|---------------------------|---------------------------|---------------------------|---------------------------|
| | 4 | --- | 3228-040 70.78 | 3328-040 75.75 | 3428-040 100.04 | 3528-040 121.36 |
| | 6 | --- | 3228-060 99.16 | 3328-060 102.53 | 3428-060 127.95 | 3528-060 148.20 |
| | 8 | --- | 3228-080 151.31 | 3328-080 157.35 | 3428-080 183.17 | 3528-080 199.64 |
| | 10 | --- | 3228-100 216.02 | 3328-100 234.27 | 3428-100 288.46 | 3528-100 320.23 |
| | 12 | --- | 3228-120 289.41 | 3328-120 313.53 | 3428-120 375.58 | 3528-120 447.24 |
| | 14 | --- | 3228-140 415.63 | 3328-140 437.32 | 3428-140 474.68 | --- |
| | 16 | --- | 3228-160 548.04 | 3328-160 622.56 | 3428-160 675.27 | --- |

Cross (Socket x Socket x Socket x Socket)

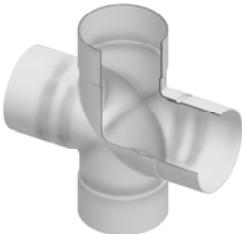
| | | | | | | |
|--|------|-----------------------------|-----------------------------|-----------------------------|------------------------------|------------------------------|
| | 4X2 | --- | 320-103280 58.25 | 330-103280 87.41 | --- | --- |
| | 4X3 | --- | 320-103281 64.06 | 330-103281 90.33 | --- | --- |
| | 6 | 310-103286 96.71 | 320-103286 167.83 | 330-103286 189.98 | 340-103286 391.80 | 350-103286 430.18 |
| | 6X2 | 310-103283 66.44 | 320-103283 72.27 | 330-103283 96.71 | 340-103283 287.19 | 350-103283 289.52 |
| | 6X3 | 310-103284 75.75 | 320-103284 90.89 | 330-103284 121.25 | 340-103284 298.80 | 350-103284 304.60 |
| | 6X4 | 310-103285 81.59 | 320-103285 102.53 | 330-103285 138.65 | 340-103285 322.06 | 350-103285 345.33 |
| | 8 | 310-103291 125.84 | 320-103291 217.99 | 330-103291 264.58 | 340-103291 590.63 | 350-103291 631.35 |
| | 8X2 | 310-103287 85.06 | 320-103287 108.38 | 330-103287 121.25 | 340-103287 368.59 | 350-103287 374.22 |
| | 8X3 | 310-103288 90.89 | 320-103288 121.25 | 330-103288 132.83 | 340-103288 380.18 | 350-103288 420.89 |
| | 8X4 | 310-103289 103.72 | 320-103289 138.65 | 330-103289 159.64 | 340-103289 406.92 | 350-103289 444.12 |
| | 8X6 | 310-103290 114.20 | 320-103290 169.01 | 330-103290 200.47 | 340-103290 474.39 | 350-103290 509.26 |
| | 10 | 310-103297 203.97 | 320-103297 325.17 | 330-103297 456.89 | 340-103297 976.66 | 350-103297 1041.43 |
| | 10X2 | 310-103292 103.72 | 320-103292 150.31 | 330-103292 178.32 | 340-103292 570.87 | 350-103292 619.75 |
| | 10X3 | 310-103293 114.20 | 320-103293 170.15 | 330-103293 214.43 | 340-103293 579.01 | 350-103293 634.80 |
| | 10X4 | 310-103294 125.84 | 320-103294 189.98 | 330-103294 242.43 | 340-103294 628.99 | 350-103294 666.22 |
| | 10X6 | 310-103295 139.85 | 320-103295 210.96 | 330-103295 282.06 | 340-103295 702.26 | 350-103295 742.97 |
| | 10X8 | 310-103296 159.64 | 320-103296 258.75 | 330-103296 350.84 | 340-103296 789.48 | 350-103296 845.27 |
| | 12 | 310-103304 318.19 | 320-103304 501.17 | 330-103304 737.80 | 340-103304 1446.39 | 350-103304 1671.94 |
| | 12X2 | 310-103298 148.04 | 320-103298 198.14 | 330-103298 289.04 | 340-103298 725.55 | 350-103298 731.31 |
| | 12X3 | 310-103299 161.97 | 320-103299 228.44 | 330-103299 300.71 | 340-103299 764.03 | 350-103299 803.57 |

Irrigation & Turf Product
PVC Class 63, 100, 125, 160 & 200 IPS Fabricated Fittings & Molded Class 125



| Size | CLASS 63 | CLASS 100 | CLASS 125 | CLASS 160 | CLASS 200 |
|------|---------------------------------------|---------------------------------------|---------------------------------------|---------------------------------------|---------------------------------------|
| | Prod Code: 340 Part Number MSRP | Prod Code: 350 Part Number MSRP | Prod Code: 360 Part Number MSRP | Prod Code: 370 Part Number MSRP | Prod Code: 380 Part Number MSRP |


Cross (Socket x Socket x Socket x Socket) (continued)

| | | | | | | |
|--|-------|--|-----------------------------|-----------------------------|------------------------------|------------------------------|
|  | 12X4 | 310-103300 172.48 | 320-103300 273.16 | 330-103300 336.83 | 340-103300 862.69 | 350-103300 876.67 |
| | 12X6 | 310-103301 181.79 | 320-103301 284.38 | 330-103301 386.96 | 340-103301 947.58 | 350-103301 965.04 |
| | 12X8 | 310-103302 209.79 | 320-103302 332.17 | 330-103302 454.58 | 340-103302 1058.02 | 350-103302 1081.34 |
| | 12X10 | 310-103303 250.55 | 320-103303 412.58 | 330-103303 576.95 | 340-103303 1212.65 | 350-103303 1256.85 |
| | 15 | 310-103321 ¹ 540.83 | --- | --- | --- | --- |
| | 15X2 | 310-103313 ² 233.09 | --- | --- | --- | --- |
| | 15X3 | 310-103314 ² 262.27 | --- | --- | --- | --- |
| | 15X4 | 310-103315 ² 289.04 | --- | --- | --- | --- |
| | 15X6 | 310-103316 ² 331.03 | --- | --- | --- | --- |
| | 15X8 | 310-103317 ² 361.31 | --- | --- | --- | --- |
| | 15X10 | 310-103318 ² 391.61 | --- | --- | --- | --- |
| | 15X12 | 310-103319 ² 433.61 | --- | --- | --- | --- |

¹ 15" PIP O.D.

² 15" PIP O.D. x IPS

Cross (Gasket x Gasket x Gasket x Gasket)

| | | | | | | |
|--|------|-----|-----------------------------|------------------------------|------------------------------|------------------------------|
|  | 4 | --- | 320-103997 203.97 | 330-103997 221.46 | 340-103997 276.84 | 350-103997 298.99 |
| | 6 | --- | 320-104001 237.75 | 330-104001 298.36 | 340-104001 497.60 | 350-104001 631.35 |
| | 6X4 | --- | 320-104000 215.63 | 330-104000 273.89 | 340-104000 391.80 | 350-104000 491.79 |
| | 8 | --- | 320-104006 389.31 | 330-104006 445.26 | 340-104006 772.04 | 350-104006 959.24 |
| | 8X4 | --- | 320-104004 291.38 | 330-104004 337.99 | 340-104004 534.78 | 350-104004 642.96 |
| | 8X6 | --- | 320-104005 349.64 | 330-104005 384.60 | 340-104005 641.80 | 350-104005 748.76 |
| | 10 | --- | 320-104012 585.13 | 330-104012 773.98 | 340-104012 1285.93 | 350-104012 1432.42 |
| | 10X4 | --- | 320-104009 407.94 | 330-104009 495.37 | 340-104009 695.27 | 350-104009 830.18 |
| | 10X6 | --- | 320-104010 466.20 | 330-104010 512.85 | 340-104010 851.09 | 350-104010 947.58 |
| | 10X8 | --- | 320-104011 524.52 | 330-104011 670.22 | 340-104011 1046.43 | 350-104011 1081.34 |
| | 12 | --- | 320-104019 793.75 | 330-104019 1086.36 | 340-104019 1791.69 | 350-104019 2017.25 |
| | 12X4 | --- | 320-104015 582.79 | 330-104015 641.08 | 340-104015 1019.64 | 350-104015 1169.65 |
| | 12X6 | --- | 320-104016 641.08 | 330-104016 676.03 | 340-104016 1169.16 | 350-104016 1247.56 |
| | 12X8 | --- | 320-104017 699.34 | 330-104017 792.60 | 340-104017 1319.61 | 350-104017 1348.72 |

Made in the U.S.A.


Suitable for Oil-Free air handling to 25 psi, not for distribution of compressed air or gas
 See MSRP-1 Sheet or Check Spears® On-line Catalog @ www.spearsmfg.com for Pricing




Irrigation & Turf Product
PVC Class 63, 100, 125, 160 & 200 IPS Fabricated Fittings & Molded Class 125

| | Size | CLASS 63 | CLASS 100 | CLASS 125 | CLASS 160 | CLASS 200 |
|--|------|---------------------------------------|---------------------------------------|---------------------------------------|---------------------------------------|---------------------------------------|
| | | Prod Code: 340 Part Number MSRP | Prod Code: 350 Part Number MSRP | Prod Code: 360 Part Number MSRP | Prod Code: 370 Part Number MSRP | Prod Code: 380 Part Number MSRP |

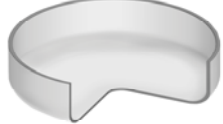
Cross (Gasket x Gasket x Gasket x Gasket) (continued)

| | | | | | | |
|--|-------|-----|----------------------|----------------------|-----------------------|-----------------------|
|  | 12X10 | --- | 320-104018 745.99 | 330-104018 955.78 | 340-104018 1546.39 | 350-104018 1578.94 |
|--|-------|-----|----------------------|----------------------|-----------------------|-----------------------|

Surface Reducer (Socket)

| | | | | | | |
|---|---------------------|---------------------|----------------------|----------------------|-----|-----|
|  | 6X2 | 310-102013 32.62 | --- | 330-102013 46.60 | --- | --- |
| | 6X3 | 310-102015 32.62 | --- | 330-102015 46.60 | --- | --- |
| | 6X4 | 310-102016 32.62 | --- | --- | --- | --- |
| | 8X2 | 310-102018 44.23 | --- | 330-102018 93.25 | --- | --- |
| | 8X3 | 310-102020 44.23 | --- | 330-102020 93.25 | --- | --- |
| | 8X4 | 310-102021 44.23 | --- | 330-102021 93.25 | --- | --- |
| | 8X6 | 310-102022 44.23 | --- | 3340-585 93.25 | --- | --- |
| | 10X2 | 310-102024 71.07 | --- | 330-102024 145.69 | --- | --- |
| | 10X3 | 310-102026 71.07 | --- | 330-102026 145.69 | --- | --- |
| | 10X4 | 310-102027 71.07 | --- | 330-102027 145.69 | --- | --- |
| | 10X6 | 310-102028 71.07 | --- | 330-102028 145.69 | --- | --- |
| | 10X8 | 310-102029 71.07 | --- | 330-102029 145.69 | --- | --- |
| | 12X2 | 310-102031 87.41 | --- | 330-102031 262.27 | --- | --- |
| | 12X3 | 310-102033 87.41 | --- | 330-102033 262.27 | --- | --- |
| | 12X4 | 310-102034 87.41 | --- | 330-102034 262.27 | --- | --- |
| | 12X6 | 310-102035 87.41 | --- | 330-102035 262.27 | --- | --- |
| | 12X8 | 310-102036 87.41 | --- | 330-102036 262.27 | --- | --- |
| 12X10 | 310-102037 87.41 | --- | 330-102037 262.27 | --- | --- | |

Cap (Socket)

| | | | | | | |
|---|----|---------------------|-----|---------------------|-----|-----|
|  | 6 | 310-107540 22.15 | --- | 330-107540 43.11 | --- | --- |
| | 8 | 310-107541 40.77 | --- | 330-107541 55.93 | --- | --- |
| | 10 | 310-107542 69.93 | --- | 330-107542 89.75 | --- | --- |

Irrigation & Turf Product
PVC Class 63, 100, 125, 160 & 200 IPS Fabricated Fittings & Molded Class 125



| | Size | CLASS 63 | CLASS 100 | CLASS 125 | CLASS 160 | CLASS 200 |
|--|------|---------------------------------------|---------------------------------------|---------------------------------------|---------------------------------------|---------------------------------------|
| | | Prod Code: 340 Part Number MSRP | Prod Code: 350 Part Number MSRP | Prod Code: 360 Part Number MSRP | Prod Code: 370 Part Number MSRP | Prod Code: 380 Part Number MSRP |

Cap (Socket) (continued)

| | | | | | | |
|--|----|---------------------|-----|----------------------|-----|-----|
| | 12 | 310-107543 85.59 | --- | 330-107543 172.48 | --- | --- |
|--|----|---------------------|-----|----------------------|-----|-----|

Cap (Gasket)

| | | | | | | |
|--|----|-----|-----|----------------------|-----|-----|
| | 4 | --- | --- | 330-107565 78.64 | --- | --- |
| | 6 | --- | --- | 330-107566 111.86 | --- | --- |
| | 8 | --- | --- | 330-107567 189.98 | --- | --- |
| | 10 | --- | --- | 330-107568 306.51 | --- | --- |
| | 12 | --- | --- | 330-107569 462.73 | --- | --- |

Saddle (Socket)

| | | | | | | |
|------|---------------------|----------------------|---------------------|----------------------|-----|-----|
| | 6 | 310-101937 31.47 | --- | --- | --- | --- |
| | 6X2 | 310-101789 24.44 | --- | 330-101789 69.93 | --- | --- |
| | 6X3 | 310-101797 26.77 | --- | 330-101797 81.59 | --- | --- |
| | 6X4 | 310-101804 30.25 | --- | 330-101804 93.25 | --- | --- |
| | 8 | 310-101938 46.60 | --- | --- | --- | --- |
| | 8X2 | 310-101790 24.44 | --- | 330-101790 69.93 | --- | --- |
| | 8X3 | 310-101798 26.77 | --- | 330-101798 81.59 | --- | --- |
| | 8X4 | 310-101805 30.25 | --- | 330-101805 93.25 | --- | --- |
| | 8X6 | 310-101811 31.47 | --- | 330-101811 104.91 | --- | --- |
| | 10 | 310-101939 72.27 | --- | --- | --- | --- |
| | 10X2 | 310-101791 24.44 | --- | 330-101791 69.93 | --- | --- |
| | 10X3 | 310-101799 26.77 | --- | 330-101799 81.59 | --- | --- |
| | 10X4 | 310-101806 30.25 | --- | 330-101806 93.25 | --- | --- |
| | 10X6 | 310-101812 31.47 | --- | 330-101812 104.91 | --- | --- |
| | 10X8 | 310-101817 46.60 | --- | 330-101817 116.54 | --- | --- |
| | 12 | 310-101940 108.12 | --- | --- | --- | --- |
| | 12X2 | 310-101792 32.78 | --- | 330-101792 69.93 | --- | --- |
| | 12X3 | 310-101800 26.77 | --- | 330-101800 81.59 | --- | --- |
| 12X4 | 310-101807 30.25 | --- | 330-101807 93.25 | --- | --- | |

Made in the U.S.A.

Suitable for Oil-Free air handling to 25 psi, not for distribution of compressed air or gas
 See MSRP-1 Sheet or Check Spears® On-line Catalog @ www.spearsmfg.com for Pricing



Irrigation & Turf Product
PVC Class 63, 100, 125, 160 & 200 IPS Fabricated Fittings & Molded Class 125

| | Size | CLASS 63 | CLASS 100 | CLASS 125 | CLASS 160 | CLASS 200 |
|--|------|---------------------------------------|---------------------------------------|---------------------------------------|---------------------------------------|---------------------------------------|
| | | Prod Code: 340 Part Number MSRP | Prod Code: 350 Part Number MSRP | Prod Code: 360 Part Number MSRP | Prod Code: 370 Part Number MSRP | Prod Code: 380 Part Number MSRP |

Saddle (Socket) (continued)

| | | | | | | |
|--|-------|---------------------|-----|----------------------|-----|-----|
| | 12X6 | 310-101813 31.47 | --- | 330-101813 104.91 | --- | --- |
| | 12X8 | 310-101818 46.60 | --- | 330-101818 116.54 | --- | --- |
| | 12X10 | 310-101822 72.27 | --- | 330-101822 128.20 | --- | --- |

Stub Saddle (Socket)

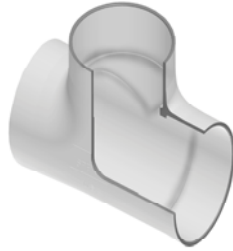
| | | | | | | |
|-------|---------------------|----------------------|----------------------|----------------------|-----|-----|
| | 6 | 310-101949 51.25 | --- | --- | --- | --- |
| | 6X2 | 310-101884 33.76 | --- | 330-101884 61.74 | --- | --- |
| | 6X3 | 310-101892 39.64 | --- | 330-101892 67.57 | --- | --- |
| | 6X4 | 310-101899 45.46 | --- | 330-101899 75.75 | --- | --- |
| | 8 | 310-101950 69.93 | --- | --- | --- | --- |
| | 8X2 | 310-101885 33.76 | --- | 330-101885 61.74 | --- | --- |
| | 8X3 | 310-101893 39.64 | --- | 330-101893 67.57 | --- | --- |
| | 8X4 | 310-101900 45.46 | --- | 330-101900 75.75 | --- | --- |
| | 8X6 | 310-101906 51.25 | --- | 330-101906 92.05 | --- | --- |
| | 10 | 310-101951 96.71 | --- | --- | --- | --- |
| | 10X2 | 310-101886 33.76 | --- | 330-101886 61.74 | --- | --- |
| | 10X3 | 310-101894 39.64 | --- | 330-101894 67.57 | --- | --- |
| | 10X4 | 310-101901 45.46 | --- | 330-101901 75.75 | --- | --- |
| | 10X6 | 310-101907 51.25 | --- | 330-101907 92.05 | --- | --- |
| | 10X8 | 310-101912 69.93 | --- | 330-101912 106.03 | --- | --- |
| | 12 | 310-101952 121.25 | --- | --- | --- | --- |
| | 12X2 | 310-101887 33.76 | --- | 330-101887 61.74 | --- | --- |
| | 12X3 | 310-101895 39.64 | --- | 330-101895 67.57 | --- | --- |
| | 12X4 | 310-101902 45.46 | --- | 330-101902 87.44 | --- | --- |
| | 12X6 | 310-101908 51.25 | --- | 330-101908 92.05 | --- | --- |
| 12X8 | 310-101913 69.93 | --- | 330-101913 106.03 | --- | --- | |
| 12X10 | 310-101917 96.71 | --- | 330-101917 111.86 | --- | --- | |

Irrigation & Turf Product
PVC Class 63, 100, 125, 160 & 200 IPS Fabricated Fittings & Molded Class 125



Class 125 Molded Fittings

| Part Number | Size | Std Pk | Mstr Ctn | Prod Code | MSRP |
|-------------|------|--------|----------|-----------|------|
|-------------|------|--------|----------|-----------|------|



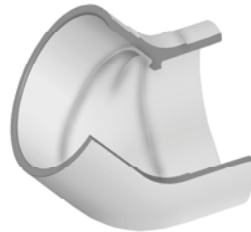
Class 125 Molded Tee

| | | | | | |
|-----------|-----------|---|---|-----|--------|
| 12501-100 | 10 | 1 | 0 | 361 | 378.71 |
| 12501-120 | 12 | 1 | 0 | 361 | 568.02 |



Class 125 Molded 90° Elbow

| | | | | | |
|-----------|-----------|---|---|-----|--------|
| 12506-100 | 10 | 1 | 0 | 361 | 317.65 |
| 12506-120 | 12 | 1 | 0 | 361 | 485.84 |



Class 125 Molded 45° Elbow

| | | | | | |
|-----------|-----------|---|---|-----|--------|
| 12517-100 | 10 | 1 | 0 | 361 | 203.04 |
| 12517-120 | 12 | 1 | 0 | 361 | 297.73 |



Class 125 Molded Coupling

| | | | | | |
|-----------|-----------|---|---|-----|--------|
| 12529-100 | 10 | 1 | 0 | 361 | 98.39 |
| 12529-120 | 12 | 1 | 0 | 361 | 158.24 |



Class 125 Molded Reducer Coupling

| | | | | | |
|-----------|-------------|---|---|-----|--------|
| 12529-626 | 10X6 | 1 | 0 | 361 | 164.04 |
| 12529-628 | 10X8 | 1 | 0 | 361 | 102.16 |

| Part Number | Size | Std Pk | Mstr Ctn | Prod Code | MSRP |
|-------------|------|--------|----------|-----------|------|
|-------------|------|--------|----------|-----------|------|

Class 125 Molded Reducer Coupling (continued)

| | | | | | |
|-----------|--------------|---|---|-----|--------|
| 12529-668 | 12X8 | 1 | 0 | 361 | 244.08 |
| 12529-670 | 12X10 | 1 | 0 | 361 | 194.32 |



Class 125 Molded Reducer Bushing

| | | | | | |
|-----------|--------------|---|---|-----|--------|
| 12537-626 | 10X6 | 3 | 0 | 361 | 155.73 |
| 12537-628 | 10X8 | 3 | 0 | 361 | 155.73 |
| 12537-668 | 12X8 | 2 | 0 | 361 | 280.33 |
| 12537-670 | 12X10 | 2 | 0 | 361 | 278.63 |