

Fabricated Fittings Product
PVC 80, 100 & 125 PSI PIP Fabricated Fittings

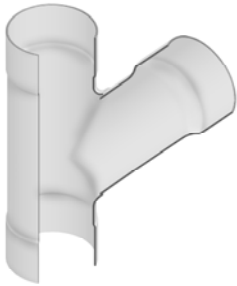


Wyes

Size	80 PSI	100 PSI	125 PSI
	Prod Code:310 Part Number	Prod Code:320 Part Number	Prod Code:330 Part Number

Wyes (Socket x Socket x Socket) (continued)

10	2975-100 340.86	---	---
10X4	2975-624 208.80	---	---
10X6	2975-626 219.61	---	---
10X8	2975-628 280.82	---	---
12	2975-120 487.95	---	---
12X4	2975-664 247.67	---	---
12X6	2975-666 270.86	---	---
12X8	2975-668 306.06	---	---
12X10	2975-670 326.62	---	---
15	2975-150 977.53	---	---
15X4	2975-724 392.85	---	---
15X6	2975-726 420.44	---	---
15X8	2975-728 508.62	---	---
15X10	2975-730 546.34	---	---
15X12	2975-732 755.25	---	---
18	2975-187 1427.80	---	---
18X4	2975-784 616.82	---	---
18X6	2975-786 653.97	---	---
18X8	2975-788 722.13	---	---
18X10	2975-790 753.21	---	---
18X12	2975-792 988.03	---	---
18X15	2975-795 1238.55	---	---



Surface Reducers

Size	80 PSI	100 PSI	125 PSI
	Prod Code:310 Part Number	Prod Code:320 Part Number	Prod Code:330 Part Number

Surface Reducer (Socket)

6X2	---	300-102013 51.63	---
6X3	---	300-102015 51.63	---
8X2	---	300-102018 96.84	---
8X3	---	300-102020 96.84	---
8X4	---	300-102021 96.84	---
10X2	---	300-102024 122.73	---
10X3	---	300-102026 122.73	---
10X4	---	300-102027 122.73	---
10X6	---	300-102028 122.73	---
12X2	---	300-102031 180.79	---
12X3	---	300-102033 180.79	---
12X4	---	300-102034 180.79	---
12X6	---	300-102035 180.79	---
12X8	---	300-102036 180.79	---
15X2	---	300-102048 329.21	---
15X3	---	300-102050 329.21	---
15X4	---	300-102051 329.21	---
15X6	---	300-102052 329.21	---
15X8	---	300-102053 329.21	---
15X10	---	300-102054 329.21	---
18X2	---	300-102067 497.24	---
18X3	---	300-102069 497.24	---
18X4	---	300-102070 497.24	---
18X6	---	300-102071 497.24	---
18X8	---	300-102072 497.24	---
18X10	---	300-102073 497.24	---






Fabricated Fittings Product

PVC 80, 100 & 125 PSI PIP Fabricated Fittings

Surface Reducers

	Size	80 PSI	100 PSI	125 PSI
		Prod Code:310	Prod Code:320	Prod Code:330
		Part Number	Part Number	Part Number

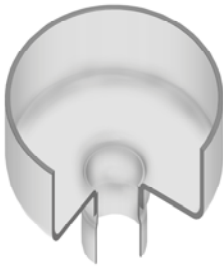
Surface Reducer (Socket) (continued)

	18X12	---	300-102074 497.24	---
	21X2	---	300-102088 820.14	---
	21X3	---	300-102089 820.14	---
	21X4	---	300-102090 820.14	---
	21X6	---	300-102091 820.14	---
	21X8	---	300-102092 820.14	---
	21X10	---	300-102093 820.14	---
	21X12	---	300-102094 820.14	---
	21X15	---	300-102095 820.14	---

Stub Surface Reducers

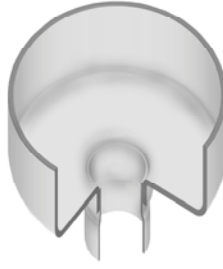
	Size	80 PSI	100 PSI	125 PSI
		Prod Code:310	Prod Code:320	Prod Code:330
		Part Number	Part Number	Part Number

Stub Surface Reducer (Socket)

	6X4	---	30040-532 127.21	---
	8X4	---	30040-582 145.94	---
	8X6	---	30040-585 155.81	---
	10X4	---	30040-624 165.80	---
	10X6	---	30040-626 175.12	---
	10X8	---	30040-628 184.15	---
	12X4	---	30040-664 186.64	---
	12X6	---	30040-666 190.41	---
	12X8	---	30040-668 219.46	---
	12X10	---	30040-670 252.80	---
	15X4	---	30040-724 306.15	---
	15X6	---	30040-726 320.27	---
	15X8	---	30040-728 336.02	---
	15X10	---	30040-730 370.82	---

	Size	80 PSI	100 PSI	125 PSI
		Prod Code:310	Prod Code:320	Prod Code:330
		Part Number	Part Number	Part Number

Stub Surface Reducer (Socket) (continued)

	15X12	---	30040-732 382.39	---
	18X4	---	30040-784 731.79	---
	18X6	---	30040-786 752.93	---
	18X8	---	30040-788 769.05	---
	18X10	---	30040-790 797.29	---
	18X12	---	30040-792 819.29	---
	18X15	---	30040-795 938.56	---
	21X4	---	30040-844 1015.61	---
	21X6	---	30040-846 1025.84	---
	21X8	---	30040-848 1053.82	---
	21X10	---	30040-850 1088.62	---
	21X12	---	30040-852 1103.12	---
	21X15	---	30040-855 1222.78	---
	21X18	---	30040-858 1350.33	---
	24X4	---	30040-904 1146.65	---
	24X6	---	30040-906 1154.49	---
	24X8	---	30040-908 1183.72	---
	24X10	---	30040-910 1218.51	---
	24X12	---	30040-912 1233.95	---
	24X15	---	30040-915 1353.72	---
24X18	---	30040-918 1481.32	---	