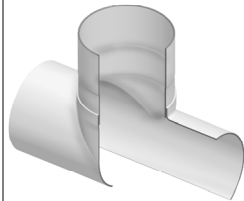


Fabricated Fittings Product
PVC 80, 100 & 125 PSI PIP Fabricated Fittings & Pipe Flanges



Glue-On Saddles

Size	80 PSI	100 PSI	125 PSI
	Prod Code:310 Part Number	Prod Code:320 Part Number	Prod Code:330 Part Number
6X2	---	300-101884 85.85	---
6X3	---	300-101892 94.48	---
6X4	---	300-101899 109.16	---
8X2	---	300-101885 85.85	---
8X3	---	300-101893 94.48	---
8X4	---	300-101900 109.16	---
8X6	---	300-101906 134.95	---
10X2	---	300-101886 85.85	---
10X3	---	300-101894 94.48	---
10X4	---	300-101901 109.16	---
10X6	---	300-101907 134.95	---
10X8	---	300-101912 176.69	---
12X2	---	300-101887 85.85	---
12X3	---	300-101895 94.48	---
12X4	---	300-101902 109.16	---
12X6	---	300-101908 134.95	---
12X8	---	300-101913 176.69	---
12X10	---	300-101917 191.37	---
15X2	---	300-101888 123.91	---
15X3	---	300-101896 137.37	---
15X4	---	300-101903 143.55	---
15X6	---	300-101909 148.43	---
15X8	---	300-101914 176.69	---
15X10	---	300-101918 203.64	---
15X12	---	300-101921 268.67	---
18X2	---	300-101889 202.42	---



Size	80 PSI	100 PSI	125 PSI
	Prod Code:310 Part Number	Prod Code:320 Part Number	Prod Code:330 Part Number

Stub Saddle (Socket) (continued)

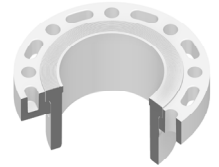
	18X3	---	300-101897 207.34	---
	18X4	---	300-101904 250.25	---
	18X6	---	300-101910 318.99	---
	18X8	---	300-101915 341.08	---
	18X10	---	300-101919 392.63	---
	18X12	---	300-101922 452.77	---
	18X15	---	300-101924 633.08	---

Pipe Flanges

Part Number	Size	Std Pk	Mstr Ctn	Prod Code	MSRP
-------------	------	--------	----------	-----------	------

Flange Van Stone Style -PIP

Flange x PIP Socket



125 psi Maximum Internal Pressure Rating @ 73°F (23°C)

354-060F	6X6.140	1	4	320	133.67
354-080F	8X8.160	1	2	320	202.42
354-100F	10X10.200	1	2	320	284.61
354-120F	12X12.240	1	2	320	412.21
354-150F	14X15.300	1	0	320	1098.76
354-151F	16X15.300	1	0	320	1253.46
354-182F	18X18.360	1	0	320	1904.21
354-181F	18X18.701	1	0	320	1904.21
354-201F	20X22.047	1	0	320	2900.51
354-241F	24X24.803	1	0	320	4247.72

For more information, refer to 80, 100 & 125 psi PIP Fabrication Fittings.

PIP = Plastic Irrigation Pipe (dimensions are NOT the same as IPS dimensions).

Sizes 6" - 16" are furnished with Glass Filled PVC ring.
 Sizes 18" - 24" are furnished with steel ring.