



Fabricated Fittings Product

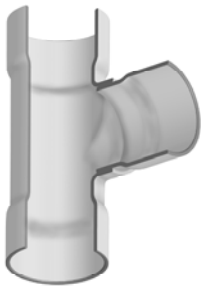
**PVC Schedule 40 & 80 Low Pressure Fabricated Fittings**

**Tees**

Size	SCH 40 LOW PR	SCH 80 LOW PR
	Prod Code: 390	Prod Code: 400
	Part Number MSRP	Part Number MSRP

**TEE (Socket x Socket x Socket)**

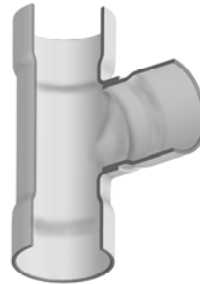
6	3701-060 122.67	3901-060 283.66
6X2	3701-528 106.01	3901-528 158.96
6X3	3701-530 111.35	3901-530 166.44
6X4	3701-532 116.46	3901-532 172.80
8	3701-080 199.83	3901-080 338.64
8X2	3701-578 124.64	3901-578 222.64
8X3	3701-580 130.71	3901-580 250.85
8X4	3701-582 134.26	3901-582 256.44
8X6	3701-585 145.68	3901-585 266.24
10	3701-100 388.66	3901-100 528.19
10X2	3701-621 202.91	3901-621 314.14
10X3	3701-623 206.66	3901-623 342.15
10X4	3701-624 211.72	3901-624 387.06
10X6	3701-626 258.79	3901-626 472.97
10X8	3701-628 346.94	3901-628 495.63
12	3701-120 516.54	3901-120 743.11
12X2	3701-661 270.89	3901-661 389.03
12X3	3701-663 274.89	3901-663 453.38
12X4	3701-664 281.81	3901-664 515.09
12X6	3701-666 327.32	3901-666 599.29
12X8	3701-668 390.96	3901-668 659.83
12X10	3701-670 445.51	3901-670 668.47
14	3701-140 1015.36	3901-140 1307.02
14X2	3701-691 429.61	3901-691 688.89
14X3	3701-693 475.49	3901-693 770.74
14X4	3701-694 530.12	3901-694 848.25



Size	SCH 40 LOW PR	SCH 80 LOW PR
	Prod Code: 390	Prod Code: 400
	Part Number MSRP	Part Number MSRP

**TEE (Socket x Socket x Socket) (continued)**

14X6	3701-696 622.14	3901-696 995.44
14X8	3701-698 741.76	3901-698 1192.64
14X10	3701-700 843.17	3901-700 1254.65
14X12	3701-702 997.45	3901-702 1266.83
16	3701-160 1437.26	3901-160 2059.07
16X2	3701-751 612.61	3901-751 883.20
16X3	3701-753 619.33	3901-753 976.91
16X4	3701-754 657.43	3901-754 1051.82
16X6	3701-756 711.14	3901-756 1137.73
16X8	3701-758 832.51	3901-758 1332.75
16X10	3701-760 1046.48	3901-760 1492.16
16X12	3701-762 1188.29	3901-762 1891.66
16X14	3701-764 1410.24	3901-764 1956.08
18	3701-180 1786.15	3901-180 2223.06
18X4	3701-784 1049.89	3901-784 1220.73
18X6	3701-786 1066.52	3901-786 1381.35
18X8	3701-788 1110.28	3901-788 1433.06
18X10	3701-790 1251.41	3901-790 1448.13
18X12	3701-792 1333.15	3901-792 1780.19
18X14	3701-794 1429.91	3901-794 2047.15
18X16	3701-796 1534.77	3901-796 2091.83
20	3701-200 2378.61	3901-200 3199.09
20X4	3701-814 1268.88	3901-814 1694.83
20X6	3701-816 1342.68	3901-816 1911.32
20X8	3701-818 1418.78	3901-818 2347.32
20X10	3701-820 1522.60	3901-820 2425.12
20X12	3701-822 1612.23	3901-822 2561.62



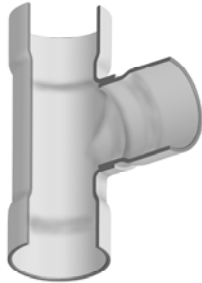
**Fabricated Fittings Product**  
**PVC Schedule 40 & 80 Low Pressure Fabricated Fittings**



**Tees**

Size	SCH 40 LOW PR	SCH 80 LOW PR
	Prod Code: 390 Part Number MSRP	Prod Code: 400 Part Number MSRP

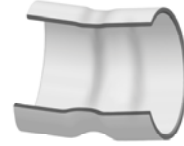
**TEE (Socket x Socket x Socket) (continued)**

	<b>20X14</b>	3701-824 <b>1739.82</b>	3901-824 <b>2786.23</b>
	<b>20X16</b>	3701-826 <b>1852.64</b>	3901-826 <b>2837.05</b>
	<b>20X18</b>	3701-828 <b>2043.53</b>	3901-828 <b>3067.34</b>
	<b>24</b>	3701-240 <b>2963.36</b>	3901-240 <b>3837.12</b>
	<b>24X4</b>	3701-904 <b>1747.23</b>	3901-904 <b>2101.12</b>
	<b>24X6</b>	3701-906 <b>1836.58</b>	3901-906 <b>2369.57</b>
	<b>24X8</b>	3701-908 <b>1948.46</b>	3901-908 <b>2563.28</b>
	<b>24X10</b>	3701-910 <b>2058.48</b>	3901-910 <b>2789.14</b>
	<b>24X12</b>	3701-912 <b>2169.13</b>	3901-912 <b>2934.89</b>
	<b>24X14</b>	3701-914 <b>2317.67</b>	3901-914 <b>3254.19</b>
	<b>24X16</b>	3701-916 <b>2451.48</b>	3901-916 <b>3357.94</b>
	<b>24X18</b>	3701-918 <b>2663.35</b>	3901-918 <b>3521.75</b>
	<b>24X20</b>	3701-920 <b>2859.46</b>	3901-920 <b>3683.79</b>

**Non 90° Ells**

Size	SCH 40 LOW PR	SCH 80 LOW PR
	Prod Code: 390 Part Number MSRP	Prod Code: 400 Part Number MSRP

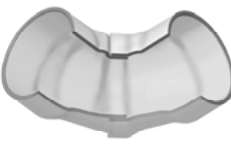
**11-1/4° ELBOW (Socket x Socket)**

	<b>4</b>	3711-040 <b>43.29</b>	3911-040 <b>58.87</b>
	<b>6</b>	3711-060 <b>69.55</b>	3911-060 <b>110.06</b>
	<b>8</b>	3711-080 <b>117.57</b>	3911-080 <b>180.16</b>
	<b>10</b>	3711-100 <b>177.41</b>	3911-100 <b>319.29</b>
	<b>12</b>	3711-120 <b>280.65</b>	3911-120 <b>466.66</b>
	<b>14</b>	3711-140 <b>441.23</b>	3911-140 <b>714.41</b>
	<b>16</b>	3711-160 <b>601.47</b>	3911-160 <b>954.97</b>
	<b>18</b>	3711-180 <b>673.15</b>	3911-180 <b>1232.81</b>
	<b>20</b>	3711-200 <b>892.89</b>	3911-200 <b>1580.43</b>
	<b>24</b>	3711-240 <b>1596.33</b>	3911-240 <b>1809.01</b>
	Size	SCH 40 LOW PR Prod Code: 390 Part Number MSRP	SCH 80 LOW PR Prod Code: 400 Part Number MSRP

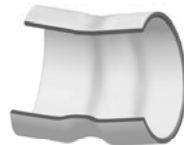
**90° Ells**

Size	SCH 40 LOW PR	SCH 80 LOW PR
	Prod Code: 390 Part Number MSRP	Prod Code: 400 Part Number MSRP

**90° Elbow (Socket x Socket)**

	<b>6</b>	3706-060 <b>121.11</b>	3906-060 <b>156.78</b>
	<b>8</b>	3706-080 <b>168.24</b>	3906-080 <b>263.32</b>
	<b>10</b>	3706-100 <b>265.95</b>	3906-100 <b>519.80</b>
	<b>12</b>	3706-120 <b>409.09</b>	3906-120 <b>758.01</b>
	<b>14</b>	3706-140 <b>547.88</b>	3906-140 <b>1115.25</b>
	<b>16</b>	3706-160 <b>812.49</b>	3906-160 <b>1387.04</b>
	<b>18</b>	3706-180 <b>1208.41</b>	3906-180 <b>1785.61</b>
	<b>20</b>	3706-200 <b>1359.17</b>	3906-200 <b>2105.29</b>
	<b>24</b>	3706-240 <b>1699.69</b>	3906-240 <b>3150.13</b>

**15° ELBOW (Socket x Socket)**

	<b>4</b>	3718-040 <b>43.29</b>	3918-040 <b>58.87</b>
	<b>6</b>	3718-060 <b>69.55</b>	3918-060 <b>110.06</b>
	<b>8</b>	3718-080 <b>117.57</b>	3918-080 <b>180.16</b>
	<b>10</b>	3718-100 <b>177.41</b>	3918-100 <b>319.29</b>
	<b>12</b>	3718-120 <b>280.65</b>	3918-120 <b>466.66</b>
	<b>14</b>	3718-140 <b>441.23</b>	3918-140 <b>714.41</b>
	<b>16</b>	3718-160 <b>601.47</b>	3918-160 <b>954.97</b>
	<b>18</b>	3718-180 <b>673.15</b>	3918-180 <b>1232.81</b>
	<b>20</b>	3718-200 <b>892.89</b>	3918-200 <b>1580.43</b>
	<b>24</b>	3718-240 <b>1596.33</b>	3918-240 <b>1809.01</b>