



PVC Schedule 40 & 80 Low Pressure Fabricated Fittings



PRODUCT

Contact Spears® for any Information not found.



Fabricated Fittings Product

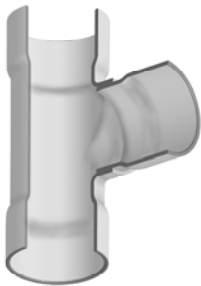
PVC Schedule 40 & 80 Low Pressure Fabricated Fittings

Tees

Size	SCH 40 LOW PR	SCH 80 LOW PR
	Prod Code: 390	Prod Code: 400
	Part Number MSRP	Part Number MSRP

TEE (Socket x Socket x Socket)

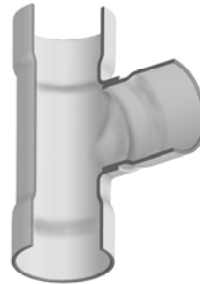
6	3701-060 122.67	3901-060 283.66
6X2	3701-528 106.01	3901-528 158.96
6X3	3701-530 111.35	3901-530 166.44
6X4	3701-532 116.46	3901-532 172.80
8	3701-080 199.83	3901-080 338.64
8X2	3701-578 124.64	3901-578 222.64
8X3	3701-580 130.71	3901-580 250.85
8X4	3701-582 134.26	3901-582 256.44
8X6	3701-585 145.68	3901-585 266.24
10	3701-100 388.66	3901-100 528.19
10X2	3701-621 202.91	3901-621 314.14
10X3	3701-623 206.66	3901-623 342.15
10X4	3701-624 211.72	3901-624 387.06
10X6	3701-626 258.79	3901-626 472.97
10X8	3701-628 346.94	3901-628 495.63
12	3701-120 516.54	3901-120 743.11
12X2	3701-661 270.89	3901-661 389.03
12X3	3701-663 274.89	3901-663 453.38
12X4	3701-664 281.81	3901-664 515.09
12X6	3701-666 327.32	3901-666 599.29
12X8	3701-668 390.96	3901-668 659.83
12X10	3701-670 445.51	3901-670 668.47
14	3701-140 1015.36	3901-140 1307.02
14X2	3701-691 429.61	3901-691 688.89
14X3	3701-693 475.49	3901-693 770.74
14X4	3701-694 530.12	3901-694 848.25



Size	SCH 40 LOW PR	SCH 80 LOW PR
	Prod Code: 390	Prod Code: 400
	Part Number MSRP	Part Number MSRP

TEE (Socket x Socket x Socket) (continued)

14X6	3701-696 622.14	3901-696 995.44
14X8	3701-698 741.76	3901-698 1192.64
14X10	3701-700 843.17	3901-700 1254.65
14X12	3701-702 997.45	3901-702 1266.83
16	3701-160 1437.26	3901-160 2059.07
16X2	3701-751 612.61	3901-751 883.20
16X3	3701-753 619.33	3901-753 976.91
16X4	3701-754 657.43	3901-754 1051.82
16X6	3701-756 711.14	3901-756 1137.73
16X8	3701-758 832.51	3901-758 1332.75
16X10	3701-760 1046.48	3901-760 1492.16
16X12	3701-762 1188.29	3901-762 1891.66
16X14	3701-764 1410.24	3901-764 1956.08
18	3701-180 1786.15	3901-180 2223.06
18X4	3701-784 1049.89	3901-784 1220.73
18X6	3701-786 1066.52	3901-786 1381.35
18X8	3701-788 1110.28	3901-788 1433.06
18X10	3701-790 1251.41	3901-790 1448.13
18X12	3701-792 1333.15	3901-792 1780.19
18X14	3701-794 1429.91	3901-794 2047.15
18X16	3701-796 1534.77	3901-796 2091.83
20	3701-200 2378.61	3901-200 3199.09
20X4	3701-814 1268.88	3901-814 1694.83
20X6	3701-816 1342.68	3901-816 1911.32
20X8	3701-818 1418.78	3901-818 2347.32
20X10	3701-820 1522.60	3901-820 2425.12
20X12	3701-822 1612.23	3901-822 2561.62

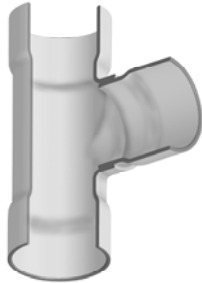




Tees

Size	SCH 40 LOW PR	SCH 80 LOW PR
	Prod Code: 390 Part Number MSRP	Prod Code: 400 Part Number MSRP

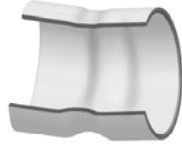
TEE (Socket x Socket x Socket) (continued)

	20X14	3701-824 1739.82	3901-824 2786.23
	20X16	3701-826 1852.64	3901-826 2837.05
	20X18	3701-828 2043.53	3901-828 3067.34
	24	3701-240 2963.36	3901-240 3837.12
	24X4	3701-904 1747.23	3901-904 2101.12
	24X6	3701-906 1836.58	3901-906 2369.57
	24X8	3701-908 1948.46	3901-908 2563.28
	24X10	3701-910 2058.48	3901-910 2789.14
	24X12	3701-912 2169.13	3901-912 2934.89
	24X14	3701-914 2317.67	3901-914 3254.19
	24X16	3701-916 2451.48	3901-916 3357.94
	24X18	3701-918 2663.35	3901-918 3521.75
	24X20	3701-920 2859.46	3901-920 3683.79

Non 90° Ells

Size	SCH 40 LOW PR	SCH 80 LOW PR
	Prod Code: 390 Part Number MSRP	Prod Code: 400 Part Number MSRP

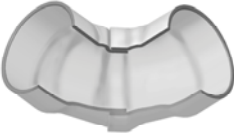
11-1/4° ELBOW (Socket x Socket)

	4	3711-040 43.29	3911-040 58.87
	6	3711-060 69.55	3911-060 110.06
	8	3711-080 117.57	3911-080 180.16
	10	3711-100 177.41	3911-100 319.29
	12	3711-120 280.65	3911-120 466.66
	14	3711-140 441.23	3911-140 714.41
	16	3711-160 601.47	3911-160 954.97
	18	3711-180 673.15	3911-180 1232.81
	20	3711-200 892.89	3911-200 1580.43
	24	3711-240 1596.33	3911-240 1809.01
	Size	SCH 40 LOW PR Prod Code: 390 Part Number MSRP	SCH 80 LOW PR Prod Code: 400 Part Number MSRP

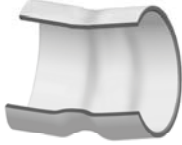
90° Ells

Size	SCH 40 LOW PR	SCH 80 LOW PR
	Prod Code: 390 Part Number MSRP	Prod Code: 400 Part Number MSRP

90° Elbow (Socket x Socket)

	6	3706-060 121.11	3906-060 156.78
	8	3706-080 168.24	3906-080 263.32
	10	3706-100 265.95	3906-100 519.80
	12	3706-120 409.09	3906-120 758.01
	14	3706-140 547.88	3906-140 1115.25
	16	3706-160 812.49	3906-160 1387.04
	18	3706-180 1208.41	3906-180 1785.61
	20	3706-200 1359.17	3906-200 2105.29
	24	3706-240 1699.69	3906-240 3150.13

15° ELBOW (Socket x Socket)

	4	3718-040 43.29	3918-040 58.87
	6	3718-060 69.55	3918-060 110.06
	8	3718-080 117.57	3918-080 180.16
	10	3718-100 177.41	3918-100 319.29
	12	3718-120 280.65	3918-120 466.66
	14	3718-140 441.23	3918-140 714.41
	16	3718-160 601.47	3918-160 954.97
	18	3718-180 673.15	3918-180 1232.81
	20	3718-200 892.89	3918-200 1580.43
	24	3718-240 1596.33	3918-240 1809.01



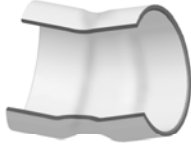
Fabricated Fittings Product

PVC Schedule 40 & 80 Low Pressure Fabricated Fittings

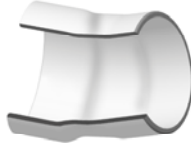
Non 90° Ells

Size	SCH 40 LOW PR	SCH 80 LOW PR
	Prod Code: 390 Part Number MSRP	Prod Code: 400 Part Number MSRP

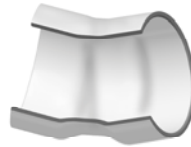
22-1/2° Elbow (Socket x Socket)

	4	3716-040 43.29	3916-040 58.87
	6	3716-060 69.55	3916-060 110.06
	8	3716-080 117.57	3916-080 180.16
	10	3716-100 177.41	3916-100 319.29
	12	3716-120 280.65	3916-120 466.66
	14	3716-140 441.23	3916-140 714.41
	16	3716-160 601.47	3916-160 954.97
	18	3716-180 722.33	3916-180 1232.81
	20	3716-200 892.89	3916-200 1580.43
	24	3716-240 1596.33	3916-240 1809.01
Size	SCH 40 LOW PR Prod Code: 390 Part Number MSRP	SCH 80 LOW PR Prod Code: 400 Part Number MSRP	

22-1/2° Street Ell (Spigot x Socket)

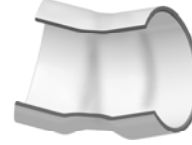
	6	3742-060 76.49	3942-060 121.03
	8	3742-080 129.32	3942-080 198.16
	10	3742-100 195.14	3942-100 351.23
	12	3742-120 308.71	3942-120 513.34
	14	3742-140 485.34	3942-140 785.86
	16	3742-160 477.66	3942-160 1050.46
	18	3742-180 794.56	3942-180 1354.35
	20	3742-200 1210.52	3942-200 1860.60
	24	3742-240 1878.02	3942-240 2128.71
Size	SCH 40 LOW PR Prod Code: 390 Part Number MSRP	SCH 80 LOW PR Prod Code: 400 Part Number MSRP	

30° Elbow (Socket x Socket)

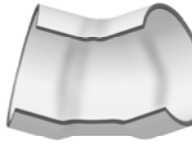
	4	3715-040 43.29	3915-040 58.87
	6	3715-060 69.55	3915-060 110.06
	8	3715-080 117.57	3915-080 180.16

Size	SCH 40 LOW PR	SCH 80 LOW PR
	Prod Code: 390 Part Number MSRP	Prod Code: 400 Part Number MSRP

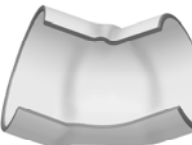
30° Elbow (Socket x Socket) (continued)

	10	3715-100 177.41	3915-100 319.29
	12	3715-120 280.65	3915-120 466.66
	14	3715-140 441.23	3915-140 714.41
	16	3715-160 601.47	3915-160 954.97
	18	3715-180 722.33	3915-180 1232.81
	20	3715-200 892.89	3915-200 1580.43
	24	3715-240 1596.33	3915-240 1809.01
	Size	SCH 40 LOW PR Prod Code: 390 Part Number MSRP	SCH 80 LOW PR Prod Code: 400 Part Number MSRP

45° Elbow (Socket x Socket)

	6	3717-060 112.41	3917-060 184.45
	8	3717-080 134.60	3917-080 198.20
	10	3717-100 221.39	3917-100 363.08
	12	3717-120 310.93	3917-120 519.04
	14	3717-140 539.12	3917-140 745.93
	16	3717-160 665.66	3917-160 965.95
	18	3717-180 768.19	3917-180 1306.66
	20	3717-200 1048.88	3917-200 1641.23
	24	3717-240 1393.72	3917-240 1932.16
Size	SCH 40 LOW PR Prod Code: 390 Part Number MSRP	SCH 80 LOW PR Prod Code: 400 Part Number MSRP	

45° STREET ELL (Spigot x Socket)

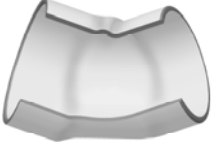
	4	3727-040 105.76	3927-040 129.41
	6	3727-060 112.41	3927-060 184.45
	8	3727-080 134.60	3927-080 198.20
	10	3727-100 221.39	3927-100 363.08
	12	3727-120 310.93	3927-120 519.04
	14	3727-140 539.12	3927-140 745.93
	16	3727-160 665.66	3927-160 965.95



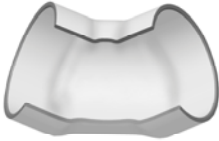
Non 90° Ells

Size	SCH 40 LOW PR	SCH 80 LOW PR
	Prod Code: 390 Part Number MSRP	Prod Code: 400 Part Number MSRP

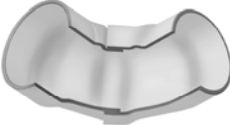
45° STREET ELL (Spigot x Socket) (continued)

	18	3727-180 768.19	3927-180 1306.66
	20	3727-200 1048.88	3927-200 1641.23
	24	3727-240 1393.72	3927-240 1932.16
Size	SCH 40 LOW PR	SCH 80 LOW PR	
	Prod Code: 390 Part Number MSRP	Prod Code: 400 Part Number MSRP	

60° ELBOW (Socket x Socket)

	6	3724-060 134.34	3924-060 195.96
	8	3724-080 191.66	3924-080 329.20
	10	3724-100 321.19	3924-100 617.04
	12	3724-120 420.82	3924-120 908.18
	14	3724-140 771.37	3924-140 1319.69
	16	3724-160 937.83	3924-160 1603.48
	18	3724-180 1204.83	3924-180 1785.61
	20	3724-200 1285.27	3924-200 3556.27
	24	3724-240 1655.96	3924-240 6233.61
Size	SCH 40 LOW PR	SCH 80 LOW PR	
	Prod Code: 390 Part Number MSRP	Prod Code: 400 Part Number MSRP	

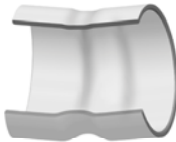
90° STREET ELL (Spigot x Socket)

	4	---	3909-040 147.52
	6	3709-060 128.56	3909-060 174.81
	8	3709-080 176.84	3909-080 287.88
	10	3709-100 295.49	3909-100 570.60
	12	3709-120 430.64	3909-120 838.33
	14	3709-140 595.52	3909-140 1225.08
	16	3709-160 926.22	3909-160 1521.46
	18	3709-180 1339.55	3909-180 1959.37
	20	3709-200 1509.98	3909-200 2311.83
	24	3709-240 1888.19	3909-240 2469.85


Couplings

Size	SCH 40 LOW PR	SCH 80 LOW PR
	Prod Code: 390 Part Number MSRP	Prod Code: 400 Part Number MSRP

COUPLING (Socket x Socket)

	8	3729-080 76.76	3929-080 169.92
	10	3729-100 94.38	3929-100 185.05
	12	3729-120 138.94	3929-120 213.31
	14	3729-140 225.61	3929-140 426.54
	16	3729-160 251.63	3929-160 507.11
	18	3729-180 429.12	3929-180 999.57
	20	3729-200 748.60	3929-200 1232.42
	24	3729-240 1039.65	3929-240 2126.02
Size	SCH 40 LOW PR	SCH 80 LOW PR	
	Prod Code: 390 Part Number MSRP	Prod Code: 400 Part Number MSRP	

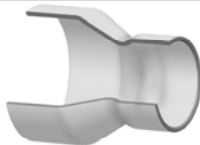
REPAIR COUPLING (Gasket x Gasket)

	4	3728-040 74.39	3928-040 86.92
	6	3728-060 103.48	3928-060 122.48
	8	3728-080 162.89	3928-080 207.20
	10	3728-100 214.92	3928-100 289.93
	12	3728-120 269.62	3928-120 368.44
	14	3728-140 467.85	3928-140 815.83
	16	3728-160 689.31	3928-160 1223.99
	18	3728-180 901.13	3928-180 1591.09
	20	3728-200 1399.34	3928-200 1909.33
	24	3728-240 1897.84	3928-240 2575.38

Reducer Couplings

Size	SCH 40 LOW PR	SCH 80 LOW PR
	Prod Code: 390 Part Number MSRP	Prod Code: 400 Part Number MSRP

REDUCER COUPLING (Socket x Socket)

	6X2	3729-528 111.62	3929-528 193.54
	6X3	3729-530 109.87	3929-530 142.97
	6X4	3729-532 39.86	3929-532 94.06



Fabricated Fittings Product

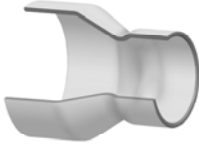
PVC Schedule 40 & 80 Low Pressure Fabricated Fittings

Reducer Couplings

Size	SCH 40 LOW PR	SCH 80 LOW PR
	Prod Code: 390 Part Number MSRP	Prod Code: 400 Part Number MSRP

REDUCER COUPLING (Socket x Socket) (continued)

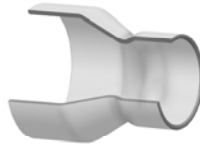
8X2	3729-578 187.76	3929-578 261.46
8X3	3729-580 173.82	3929-580 228.52
8X4	3729-582 98.81	3929-582 180.59
8X6	3729-585 84.93	3929-585 166.19
10X4	3729-624 222.98	3929-624 424.24
10X6	3729-626 207.80	3929-626 338.51
10X8	3729-628 145.44	3929-628 180.93
12X4	3729-664 419.25	3929-664 609.56
12X6	3729-666 317.89	3929-666 502.59
12X8	3729-668 279.78	3929-668 436.14
12X10	3729-670 211.72	3929-670 267.88
14X4	3729-694 674.69	3929-694 824.79
14X6	3729-696 653.18	3929-696 736.72
14X8	3729-698 472.81	3929-698 724.65
14X10	3729-700 399.33	3929-700 611.78
14X12	3729-702 354.62	3929-702 391.09
16X4	3729-754 722.13	3929-754 1211.98
16X6	3729-756 665.15	3929-756 1136.24
16X8	3729-758 605.25	3929-758 1073.13
16X10	3729-760 540.55	3929-760 746.08
16X12	3729-762 490.74	3929-762 685.86
16X14	3729-764 425.60	3929-764 578.20
18X6	3729-786 1202.07	3929-786 1751.71
18X8	3729-788 1019.55	3929-788 1621.01
18X10	3729-790 951.33	3929-790 1489.71
18X12	3729-792 890.71	3929-792 1245.02



Size	SCH 40 LOW PR	SCH 80 LOW PR
	Prod Code: 390 Part Number MSRP	Prod Code: 400 Part Number MSRP

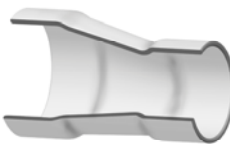
REDUCER COUPLING (Socket x Socket) (continued)

18X14	3729-794 821.44	3929-794 1205.61
18X16	3729-796 613.62	3929-796 1030.52
20X6	3729-816 1505.63	3929-816 2463.22
20X8	3729-818 1458.15	3929-818 2434.72
20X10	3729-820 1278.36	3929-820 2416.62
20X12	3729-822 1260.84	3929-822 2266.33
20X14	3729-824 1245.27	3929-824 2248.31
20X16	3729-826 1174.76	3929-826 1800.57
20X18	3729-828 1037.83	3929-828 1241.63
24X6	3729-906 3028.09	3929-906 4164.88
24X8	3729-908 2941.34	3929-908 4130.14
24X10	3729-910 2431.93	3929-910 4116.02
24X12	3729-912 2351.75	3929-912 4049.52
24X14	3729-914 2229.98	3929-914 4035.96
24X16	3729-916 2047.57	3929-916 3880.89
24X18	3729-918 1813.08	3929-918 2958.89
24X20	3729-920 1362.99	3929-920 2653.61
Size	SCH 40 LOW PR Prod Code: 390 Part Number MSRP	SCH 80 LOW PR Prod Code: 400 Part Number MSRP



ECCENTRIC REDUCER COUPLING (Socket x Socket)

3X2	3729-338E 35.40	3929-338E 49.32
4X2	3729-420E ² 48.07	3929-420E ² 125.82
4X3	3729-422E 44.43	3929-422E 64.24
6X2	3729-528E ² 108.52	3929-528E ³ 163.80
6X3	3729-530E ² 99.96	3929-530E ² 159.14
6X4	3729-532E ¹ 49.98	3929-532E 121.38
8X3	3729-580E ³ 206.17	3929-580E ³ 231.28
8X4	3729-582E ² 102.95	3929-582E ² 209.93




Fabricated Fittings Product
PVC Schedule 40 & 80 Low Pressure Fabricated Fittings



Reducer Couplings

Size	SCH 40 LOW PR	SCH 80 LOW PR
	Prod Code: 390 Part Number MSRP	Prod Code: 400 Part Number MSRP

ECCENTRIC REDUCER COUPLING (Socket x Socket) (continued)

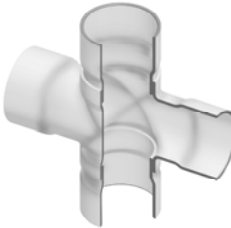
	8X6	3729-585E 83.22	3929-585E 161.43
	10X4	3729-624E ² 235.40	3929-624E ³ 355.24
	10X6	3729-626E 216.44	3929-626E ² 301.51
	10X8	3729-628E 204.06	3929-628E 278.60
	12X4	3729-664E ³ 439.20	3929-664E ⁴ 543.24
	12X6	3729-666E ² 360.88	3929-666E ³ 447.08
	12X8	3729-668E ² 239.32	3929-668E ² 386.25
	12X10	3729-670E 207.49	3929-670E 246.89
	14X6	3729-696E ² 733.12	3929-696E ³ 884.93
	14X8	3729-698E ² 600.55	3929-698E ² 791.62
	14X10	3729-700E ¹ 545.17	3929-700E ¹ 573.12
	14X12	3729-702E 333.28	3929-702E 527.07
	16X6	3729-756E ⁴ 766.05	3929-756E ⁴ 1634.95
	16X8	3729-758E ³ 755.32	3929-758E ³ 1497.15
	16X10	3729-760E ³ 558.53	3929-760E ² 1089.13
	16X12	3729-762E 531.46	3929-762E ² 966.97
	16X14	3729-764E 472.24	3929-764E 748.98
	18X6	3729-786E ⁵ 1088.83	3929-786E ⁵ 2256.91
	18X8	3729-788E ⁴ 1072.71	3929-788E ⁴ 2160.46
	18X10	3729-790E ³ 995.91	3929-790E ³ 2018.89
18X12	3729-792E ² 898.79	3929-792E ³ 1802.02	
18X14	3729-794E ² 794.66	3929-794E ² 1485.65	
18X16	3729-796E 641.03	3929-796E 1449.65	

2=Two-Step Design, 3=Three-Step Design, 4=Four-Step Design, 5=Five-Step Design, 6=Six-Step Design

Crosses

Size	SCH 40 LOW PR	SCH 80 LOW PR
	Prod Code: 390 Part Number MSRP	Prod Code: 400 Part Number MSRP

CROSS (Socket x Socket x Socket x Socket)

	4X2	---	3920-420 135.53
	4X3	---	3920-422 149.14
	6	3720-060 157.60	3920-060 367.57
	6X2	3720-528 118.31	3920-528 190.44
	6X3	3720-530 140.09	3920-530 214.65
	6X4	3720-532 154.46	3920-532 265.02
	8	3720-080 318.31	3920-080 442.69
	8X2	3720-578 204.36	3920-578 240.29
	8X3	3720-580 221.09	3920-580 255.28
	8X4	3720-582 242.89	3920-582 273.86
	8X6	3720-585 305.62	3920-585 354.93
	10	3720-100 518.14	3920-100 947.11
	10X2	3720-621 217.03	3920-621 434.94
	10X3	3720-623 249.97	3920-623 503.28
	10X4	3720-624 286.76	3920-624 516.03
	10X6	3720-626 328.84	3920-626 630.55
	10X8	3720-628 461.67	3920-628 832.07
	12	3720-120 683.07	3920-120 1334.61
	12X2	3720-661 286.82	3920-661 588.82
	12X3	3720-663 321.92	3920-663 658.18
12X4	3720-664 340.33	3920-664 686.80	
12X6	3720-666 415.99	3920-666 797.48	
12X8	3720-668 505.52	3920-668 952.65	
12X10	3720-670 586.75	3920-670 1085.59	
14	3720-140 1134.73	3920-140 2373.05	
14X2	3720-691 559.84	3920-691 893.85	



Fabricated Fittings Product

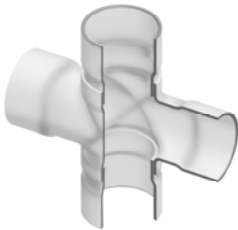
PVC Schedule 40 & 80 Low Pressure Fabricated Fittings

Crosses

Size	SCH 40 LOW PR Prod Code: 390	SCH 80 LOW PR Prod Code: 400
	Part Number MSRP	Part Number MSRP

CROSS (Socket x Socket x Socket x Socket) (continued)

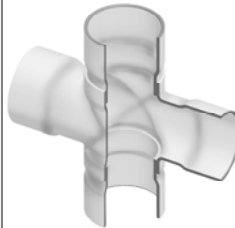
14X3	3720-693 623.35	3920-693 984.73
14X4	3720-694 692.06	3920-694 1100.93
14X6	3720-696 778.46	3920-696 1235.60
14X8	3720-698 896.84	3920-698 1421.19
14X10	3720-700 1019.02	3920-700 1701.76
14X12	3720-702 1078.08	3920-702 1993.85
16	3720-160 1657.59	3920-160 3008.45
16X2	3720-751 768.22	3920-751 1212.34
16X3	3720-753 844.31	3920-753 1324.44
16X4	3720-754 876.57	3920-754 1402.45
16X6	3720-756 948.07	3920-756 1516.96
16X8	3720-758 1110.61	3920-758 1776.94
16X10	3720-760 1322.96	3920-760 2046.31
16X12	3720-762 1520.39	3920-762 2430.88
16X14	3720-764 1596.43	3920-764 2866.77
18	3720-180 2348.40	3920-180 3713.96
18X4	3720-784 950.44	3920-784 1769.98
18X6	3720-786 1340.02	3920-786 2023.07
18X8	3720-788 1518.20	3920-788 2413.45
18X10	3720-790 1642.03	3920-790 2735.19
18X12	3720-792 1745.83	3920-792 3034.37
18X14	3720-794 1839.71	3920-794 3242.99
18X16	3720-796 2135.17	3920-796 3522.65
20	3720-200 3995.23	3920-200 6270.04
20X4	3720-814 1678.07	3920-814 2326.03
20X6	3720-816 1742.62	3920-816 2516.18



Size	SCH 40 LOW PR Prod Code: 390	SCH 80 LOW PR Prod Code: 400
	Part Number MSRP	Part Number MSRP

CROSS (Socket x Socket x Socket x Socket) (continued)

20X8	3720-818 2164.86	3920-818 2738.15
20X10	3720-820 2473.08	3920-820 3214.51
20X12	3720-822 2580.63	3920-822 3557.89
20X14	3720-824 2807.08	3920-824 3843.72
20X16	3720-826 3156.84	3920-826 4274.36
20X18	3720-828 3415.59	3920-828 5097.92
24	3720-240 5261.87	3920-240 7600.65
24X4	3720-904 2144.93	3920-904 2567.85
24X6	3720-906 2546.64	3920-906 2928.24
24X8	3720-908 2710.99	3920-908 3821.73
24X10	3720-910 2898.13	3920-910 4148.22
24X12	3720-912 3191.72	3920-912 4758.77
24X14	3720-914 3282.79	3920-914 5585.93
24X16	3720-916 3638.35	3920-916 5922.66
24X18	3720-918 4063.42	3920-918 6220.75
24X20	3720-920 4920.09	3920-920 6624.61



Caps

Size	SCH 40 LOW PR Prod Code: 390	SCH 80 LOW PR Prod Code: 400
	Part Number MSRP	Part Number MSRP

CAP (Socket)

10	3747-100 123.15	3947-100 240.46
12	3747-120 155.52	3947-120 416.31
14	3747-140 264.43	3947-140 472.15
16	3747-160 338.51	3947-160 623.16
18	3747-180 374.56	3947-180 818.72
20	3747-200 659.77	3947-200 946.09
24	3747-240 975.25	3947-240 1097.80




Fabricated Fittings Product
PVC Schedule 40 & 80 Low Pressure Fabricated Fittings



Plugs

Size	SCH 40 LOW PR	SCH 80 LOW PR
	Prod Code: 390	Prod Code: 400
	Part Number	Part Number
	MSRP	MSRP

SPIGOT PLUG (Spigot)

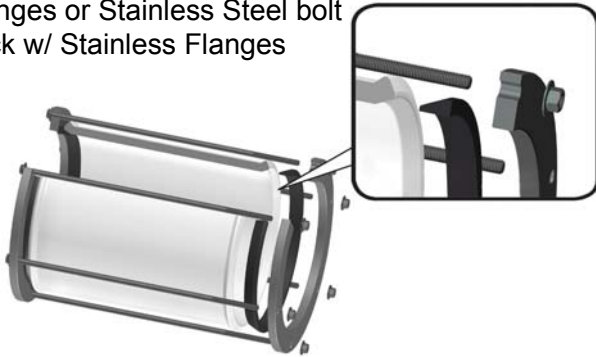
	6	3749-060 47.60	3949-060 143.97
	8	3749-080 121.59	3949-080 242.99
	10	3749-100 138.66	3949-100 307.21
	12	3749-120 198.75	3949-120 489.15
	14	3749-140 337.20	---
	16	3749-160 410.88	3949-160 711.54



Fabricated Fittings Product

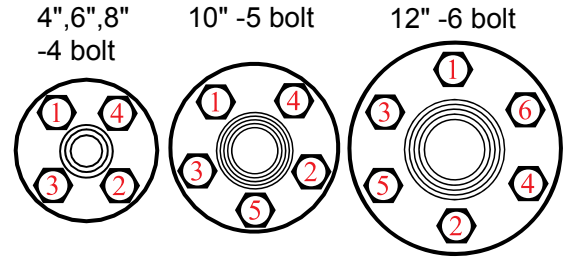
PVC Schedule 40 & 80 Low Pressure Fabricated Fittings

Zinc Plated Bolt Pack w/ Galvanized Flanges or Stainless Steel bolt pack w/ Stainless Flanges



IPS/ SCH 40: 130 psi rated

Bolt Tightening Sequence
Recommended Torque to Seal: 12-15 ft-lb



SBR Gasket (BUNA-S)

4" - 12" diameter
12" or 18" length

Size	12" With Zinc Bolts	12" With Stainless Steel Bolts	18" With Zinc Bolts	18" With Stainless Steel Bolts	Std Pk	Mstr Pk	Prod Code
------	---------------------	--------------------------------	---------------------	--------------------------------	--------	---------	-----------



Bolted Compression Couplings - IPS 12" & 18" Length

Includes Body, Flange Ends, Gaskets & Bolts with Nuts and Washers in Choice of Zinc Plated or Stainless Steel

4	3728B-040X12 748.06	3728B-040X12S 830.76	3728B-040X18 798.13	3728B-040X18S 901.99	1	5	390
6	3728B-060X12 852.04	3728B-060X12S 934.89	3728B-060X18 911.46	3728B-060X18S 1015.16	1	2	390
8	3728B-080X12 990.64	3728B-080X12S 1073.33	3728B-080X18 1060.00	3728B-080X18S 1163.55	1	2	390
10	3728B-100X12 1147.60	3728B-100X12S 1274.49	3728B-100X18 1241.76	3728B-100X18S 1371.46	1	0	390
12	3728B-120X12 1416.73	3728B-120X12S 1540.82	3728B-120X18 1530.64	3728B-120X18S 1686.43	1	0	390

Bolted Couplings are complete and ready to use
Replacement FKM gaskets and Optional replacement bolt kits in Zinc plated or Stainless Steel available below

Size	16" Zinc Bolts	16" Stainless Steel Bolts	22" Zinc Bolts	22" Stainless Steel Bolts	Std Pk	Mstr Pk	Prod Code
------	----------------	---------------------------	----------------	---------------------------	--------	---------	-----------



Bolted Coupling Bolt Kits

Includes Full Set of Bolts, Nuts & Washers for Designated Size. 12" Couplings use 16" Bolts, 18" Coupling use 22" Bolts

For 4", 6" & 8"	HKBC-060X16 152.23	HKBC1-060X16 195.40	HKBC-060X22 174.46	HKBC1-060X22 226.82	1	10	299
For 10"	HKBC-100X16 191.16	HKBC1-100X16 242.64	HKBC-100X22 215.82	HKBC1-100X22 282.53	1	10	299
For 12"	HKBC-120X16 226.82	HKBC1-120X16 290.58	HKBC-120X22 259.27	HKBC1-120X22 338.22	1	10	299

HKBC Part No. = Zinc Bolt sets
HKBC1 Part No. = Stainless Steel Bolt sets

Fabricated Fittings Product
PVC Schedule 40 & 80 Low Pressure Fabricated Fittings



Size	4	6	8	10	12	Std Pk	Mstr Pk	Prod Code
------	---	---	---	----	----	--------	---------	-----------

Bolted Coupling IPS Gasket

Replacement SBR Gasket, sold individually



4	GD-IPS-4 31.20	---	---	---	---	230	0	299
6	---	GD-IPS-6 40.93	---	---	---	230	0	299
8	---	---	GD-IPS-8 50.42	---	---	145	0	299
10	---	---	---	GD-IPS-10 60.21	---	85	0	299
12	---	---	---	---	GD-IPS-12 72.34	45	0	299