

Fabricated Fittings Product
PVC Low Head PIP Fabricated Fittings, Risers & Accessories



Riser Extensions

Part Number	Size	Std Pk	Mstr Ctn	Prod Code	MSRP
Erosion Pot Riser (continued)					
Saddle x Riser x Pot					
2881-66832	12X8X12	1	12	301	121.11
2881-67032	12X10X15	1	0	301	166.39
2881-12032	12X12X18	1	0	301	220.25
2881-72432	15X4X8	1	0	301	71.57
2881-72632	15X6X10	1	12	301	85.64
2881-72832	15X8X12	1	0	301	121.11
2881-73032	15X10X15	1	0	301	166.39
2881-73232	15X12X18	1	0	301	220.25
2881-15032	15X15X20	1	0	301	324.24
2881-78432	18X4X8	1	0	301	71.57
2881-78632	18X6X10	1	0	301	85.64
2881-78832	18X8X12	1	0	301	121.11
2881-79032	18X10X15	1	0	301	166.39
2881-79232	18X12X18	1	0	301	220.25
2881-79532	18X15X20	1	0	301	324.24
2881-81432	20X4X8	1	0	301	71.57
2881-81632	20X6X10	1	0	301	85.64
2881-81832	20X8X12	1	0	301	121.11
2881-82032	20X10X15	1	0	301	166.39
2881-82232	20X12X18	1	0	301	220.25
2881-82532	20X15X20	1	0	301	324.24



Mechanical Vent Assembly

Saddle x Riser/Vent

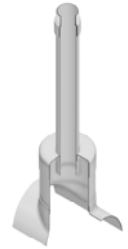
2882-420	4X2	1	10	301	70.98
2882-422	4X3	1	0	301	109.73
2882-528	6X2	1	10	301	70.98
2882-530	6X3	1	5	301	109.73
2882-532	6X4	1	5	301	152.41
2882-578	8X2	1	8	301	70.98
2882-580	8X3	1	4	301	109.73
2882-582	8X4	1	8	301	152.41
2882-621	10X2	1	10	301	70.98
2882-623	10X3	1	5	301	109.73
2882-624	10X4	1	3	301	152.41
2882-661	12X2	1	10	301	70.98
2882-663	12X3	1	5	301	109.73
2882-664	12X4	1	4	301	152.41
2882-721	15X2	1	0	301	70.99
2882-723	15X3	1	6	301	109.73
2882-724	15X4	1	4	301	152.41
2882-781	18X2	1	0	301	70.99
2882-783	18X3	1	0	301	109.73
2882-784	18X4	1	4	301	152.41
2882-811	20X2	1	0	301	70.99
2882-813	20X3	1	0	301	109.73

Part Number	Size	Std Pk	Mstr Ctn	Prod Code	MSRP
-------------	------	--------	----------	-----------	------

Mechanical Vent Assembly (continued)

Saddle x Riser/Vent

2882-814	20X4	1	5	301	152.41
----------	------	---	---	-----	--------



Mechanical Vent Riser

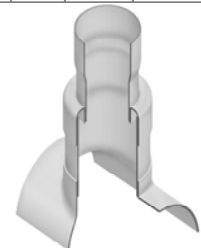
Saddle x Riser/Vent x Chamber

2883-52842	6X2X4	1	0	301	82.65
2883-57842	8X2X6	1	0	301	89.12
2883-58042	8X3X6	1	25	301	112.33
2883-62142	10X2X8	1	12	301	108.48
2883-62342	10X3X8	1	8	301	129.11
2883-62442	10X4X8	1	12	301	152.41
2883-66142	12X2X10	1	0	301	139.45
2883-66342	12X3X10	1	16	301	158.82
2883-66442	12X4X10	1	12	301	180.79
2883-72442	15X4X12	1	6	301	235.02
2883-78442	18X4X15	1	0	301	303.48
2883-81442	20X4X18	1	0	301	427.49

Vent Base

Saddle x Riser x Outlet

2888-532020	6X4X2	1	2	301	53.62
2888-585030	8X6X3	1	0	301	165.89
2888-585040	8X6X4	1	4	301	83.93
2888-628060	10X8X6	1	0	301	129.11
2888-670060	12X10X6	1	0	301	136.88
2888-732080	15X12X8	1	0	301	205.32
2888-795080	18X15X8	1	0	301	284.15
2888-828080	20X18X8	1	0	301	514.05

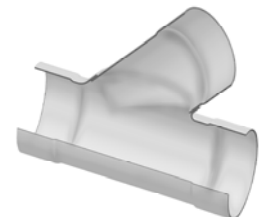


Wyes

Wye

Socket x Socket x Socket

2875-060	6	1	2	300	90.64
2875-080	8	1	0	300	119.88
2875-100	10	1	0	300	155.97
2875-120	12	1	0	300	217.29
2875-150	15	1	0	300	336.16





Fabricated Fittings Product

PVC Low Head PIP Fabricated Fittings, Risers & Accessories

Wyes

Part Number	Size	Std Pk	Mstr Ctn	Prod Code	MSRP
-------------	------	--------	----------	-----------	------

Wye (continued)

Socket x Socket x Socket

2875-183	18	1	0	300	808.31
2875-200	20	1	0	300	1083.96

Wye - Reducing

Socket x Socket x Socket

2875-532	6X4	1	4	300	70.68
2875-585	8X6	1	0	300	104.57
2875-626	10X6	1	0	300	133.73
2875-628	10X8	1	0	300	141.06
2875-666	12X6	1	0	300	146.97
2875-668	12X8	1	0	300	168.72
2875-670	12X10	1	0	300	180.23
2875-726	15X6	1	0	300	198.12
2875-728	15X8	1	0	300	214.73
2875-730	15X10	1	0	300	235.17
2875-732	15X12	1	0	300	258.19
2875-786	18X6	1	0	300	319.57
2875-788	18X8	1	0	300	324.62
2875-790	18X10	1	0	300	354.74
2875-792	18X12	1	0	300	391.23
2875-795	18X15	1	0	300	427.73
2875-816	20X6	1	0	300	399.44
2875-818	20X8	1	0	300	405.76
2875-820	20X10	1	0	300	443.41
2875-822	20X12	1	0	300	489.03
2875-825	20X15	1	0	300	534.67
2875-828	20X18	1	0	300	940.72

Double Wye

Socket x Socket x Socket x Socket

2876-060	6	1	2	300	142.35
2876-080	8	1	0	300	162.16
2876-100	10	1	0	300	271.54
2876-120	12	1	0	300	324.31
2876-150	15	1	0	300	501.73
2876-183	18	1	0	300	1360.40
2876-200	20	1	0	300	1933.94

Part Number	Size	Std Pk	Mstr Ctn	Prod Code	MSRP
-------------	------	--------	----------	-----------	------

Double Wye - Reducing

Socket x Socket x Socket x Socket

2876-585	8X6	1	0	300	114.48
2876-626	10X6	1	0	300	162.16
2876-628	10X8	1	0	300	179.35
2876-666	12X6	1	0	300	219.36
2876-668	12X8	1	0	300	251.82
2876-670	12X10	1	0	300	301.06
2876-726	15X6	1	0	300	295.69
2876-728	15X8	1	0	300	320.47
2876-730	15X10	1	0	300	351.02
2876-732	15X12	1	0	300	475.94
2876-786	18X6	1	0	300	476.99
2876-788	18X8	1	0	300	484.51
2876-790	18X10	1	0	300	529.45
2876-792	18X12	1	0	300	583.94
2876-795	18X15	1	0	300	638.40
2876-816	20X6	1	0	300	658.80
2876-818	20X8	1	0	300	675.98
2876-820	20X10	1	0	300	691.97
2876-822	20X12	1	0	300	729.89
2876-825	20X15	1	0	300	798.01
2876-828	20X18	1	0	300	1475.80

Caps

End Cap

Socket

280-107539	4 IPS	1	10	300	11.62
280-107540	6	1	10	300	12.91
280-107541	8	10	0	300	21.93
280-107542	10	1	10	300	34.89
280-107543	12	1	10	300	54.23
280-107545	15	1	5	300	76.20
280-107547	18	1	5	300	139.45
280-107548	20	1	5	300	187.25