

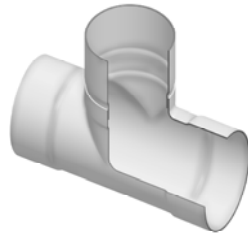
**Fabricated Fittings Product**  
**PVC Low Head PIP Fabricated Fittings, Risers & Accessories**



**Tees**

Part Number	Size	Std Pk	Mstr Ctn	Prod Code	MSRP
-------------	------	--------	----------	-----------	------

Tee



**Socket x Socket x Socket**

280-102502	6	1	8	300	49.04
280-102499	6X2	1	6	300	38.73
280-102500	6X3	1	4	300	41.98
280-102501	6X4	1	4	300	43.93
280-102507	8	1	2	300	77.67
280-102503	8X2	1	2	300	49.96
280-102504	8X3	1	3	300	59.36
280-102505	8X4	1	2	300	61.95
280-102506	8X6	1	0	300	70.98
280-102513	10	1	0	300	96.85
280-102508	10X2	1	0	300	78.75
280-102509	10X3	1	0	300	80.04
280-102510	10X4	1	0	300	82.03
280-102511	10X6	1	0	300	83.93
280-102512	10X8	1	0	300	89.99
280-102520	12	1	0	300	157.53
280-102514	12X2	1	2	300	103.31
280-102515	12X3	1	0	300	109.81
280-102516	12X4	1	0	300	114.91
280-102517	12X6	1	0	300	117.19
280-102518	12X8	1	0	300	122.73
280-102519	12X10	1	0	300	134.29
280-102528	15	1	0	300	312.55
280-102521	15X2	1	0	300	167.86
280-102522	15X3	1	0	300	167.86
280-102523	15X4	1	0	300	174.34
280-102524	15X6	1	0	300	179.48
280-102525	15X8	1	0	300	200.16
280-102526	15X10	1	0	300	223.38
280-102527	15X12	1	0	300	260.84
280-102537	18	1	0	300	543.74
280-102529	18X2	1	0	300	316.38
280-102530	18X3	1	0	300	318.93
280-102531	18X4	1	0	300	321.56
280-102532	18X6	1	0	300	328.01
280-102533	18X8	1	0	300	333.20
280-102534	18X10	1	0	300	364.20
280-102535	18X12	1	0	300	401.67
280-102536	18X15	1	0	300	439.11
280-102547	20	1	0	300	672.87
280-102538	20X2	1	0	300	400.36
280-102539	20X3	1	0	300	404.49
280-102540	20X4	1	0	300	410.67
280-102541	20X6	1	0	300	423.62
280-102542	20X8	1	0	300	432.64

Part Number	Size	Std Pk	Mstr Ctn	Prod Code	MSRP
-------------	------	--------	----------	-----------	------

**Tee (continued)**

**Socket x Socket x Socket**

280-102543	20X10	1	0	300	479.12
280-102544	20X12	1	0	300	508.84
280-102545	20X15	1	0	300	546.34
280-102546	20X18	1	0	300	614.74

**90° Ells**

90° Elbow

**Socket x Socket**

280-100812	6	1	4	300	77.48
280-100813	8	1	2	300	95.53
280-100814	10	1	0	300	152.41
280-100815	12	1	0	300	200.16
280-100816	15	1	0	300	326.72
280-100817	18	1	0	300	565.64
280-100818	20	1	0	300	762.03

**Non 90° Ells**

11-1/4° Elbow

**Socket x Socket**

280-100114	6	1	10	300	24.55
280-100115	8	1	8	300	34.89
280-100116	10	1	2	300	50.34
280-100117	12	1	2	300	69.73
280-100118	15	1	0	300	120.09
280-100119	18	1	0	300	206.65
280-100120	20	1	0	300	262.16

15° Elbow

**Socket x Socket**

280-100234	6	1	10	300	24.55
280-100235	8	1	4	300	34.89
280-100236	10	1	2	300	50.34
280-100237	12	1	2	300	69.73
280-100238	15	1	0	300	120.09