

Fabricated Fittings Product
PVC Low Head PIP Fabricated Fittings, Risers & Accessories



Caps

Part Number	Size	Std Pk	Mstr Ctn	Prod Code	MSRP
-------------	------	--------	----------	-----------	------

Surface Reducer

Socket



Glue-On Saddles

Part Number	Size	Std Pk	Mstr Ctn	Prod Code	MSRP
-------------	------	--------	----------	-----------	------

Saddle

Socket



280-102013	6X2	1	10	300	21.73
280-102015	6X3	1	10	300	21.73
280-102016	6X4	1	10	300	21.73
280-102018	8X2	1	10	300	29.86
280-102020	8X3	1	10	300	29.86
280-102021	8X4	1	10	300	29.86
280-102022	8X6	1	10	300	29.86
280-102024	10X2	1	10	300	59.77
280-102026	10X3	1	10	300	59.77
280-102027	10X4	1	10	300	59.77
280-102028	10X6	1	10	300	59.77
280-102029	10X8	1	10	300	59.77
280-102031	12X2	1	10	300	73.40
280-102033	12X3	1	10	300	73.40
280-102034	12X4	1	10	300	73.40
280-102035	12X6	1	10	300	73.40
280-102036	12X8	1	10	300	73.40
280-102037	12X10	1	10	300	73.40
280-102048	15X2	1	5	300	103.27
280-102050	15X3	1	5	300	103.27
280-102051	15X4	1	5	300	103.27
280-102052	15X6	1	5	300	103.27
280-102053	15X8	1	5	300	103.27
280-102054	15X10	1	5	300	103.27
280-102055	15X12	1	5	300	103.27
280-102067	18X2	1	5	300	154.96
280-102069	18X3	1	4	300	154.96
280-102070	18X4	1	5	300	154.96
280-102071	18X6	1	5	300	154.96
280-102072	18X8	1	5	300	154.96
280-102073	18X10	1	5	300	154.96
280-102074	18X12	1	5	300	154.96
280-102075	18X15	1	5	300	154.96
280-102077	20X2	1	5	300	205.27
280-102136	20X3	1	5	300	205.27
280-102137	20X4	1	5	300	205.27
280-102138	20X6	1	5	300	205.27
280-102139	20X8	1	5	300	205.27
280-102140	20X10	1	5	300	205.27
280-102141	20X12	1	5	300	205.27
280-102142	20X15	1	5	300	205.27
280-102143	20X18	1	5	300	205.27

280-101788	4X2	1	40	300	21.73
280-101789	6X2	1	10	300	21.73
280-101790	8X2	1	10	300	21.73
280-101791	10X2	1	10	300	21.73
280-101792	12X2	1	10	300	21.73
280-101793	15X2	1	10	300	21.73
280-101794	18X2	1	20	300	21.73
280-101795	20X2	1	10	300	23.08
280-101796	4X3	1	5	300	23.08
280-101797	6X3	1	10	300	23.08
280-101798	8X3	1	10	300	23.08
280-101799	10X3	1	10	300	23.08
280-101800	12X3	1	10	300	23.08
280-101801	15X3	1	10	300	23.08
280-101802	18X3	1	20	300	23.08
280-101803	20X3	1	10	300	34.26
280-101804	6X4	1	10	300	25.84
280-101805	8X4	1	10	300	25.84
280-101806	10X4	1	12	300	25.84
280-101807	12X4	1	10	300	25.84
280-101808	15X4	1	10	300	25.84
280-101809	18X4	1	10	300	25.84
280-101810	20X4	1	8	300	25.84
280-101811	8X6	1	8	300	32.62
280-101812	10X6	1	8	300	32.62
280-101813	12X6	1	8	300	32.62
280-101814	15X6	1	8	300	32.62
280-101815	18X6	1	10	300	32.62
280-101816	20X6	1	7	300	36.73
280-101817	10X8	1	8	300	38.06
280-101818	12X8	1	8	300	38.06
280-101819	15X8	1	8	300	38.06
280-101820	18X8	1	8	300	42.12
280-101821	20X8	1	8	300	59.77
280-101822	12X10	1	10	300	46.24
280-101823	15X10	1	10	300	52.99
280-101824	18X10	1	10	300	54.35
280-101825	20X10	1	7	300	100.56
280-101826	15X12	1	0	300	70.68
280-101827	18X12	1	3	300	91.03
280-101828	20X12	1	0	300	110.07
280-101829	18X15	1	0	300	118.24
280-101830	20X15	1	0	300	150.87
280-101831	20X18	1	0	300	167.18



Fabricated Fittings Product

PVC Low Head PIP Fabricated Fittings, Risers & Accessories

Glue-On Saddles

Part Number	Size	Std Pk	Mstr Ctn	Prod Code	MSRP
-------------	------	--------	----------	-----------	------

Stub Saddle

Socket

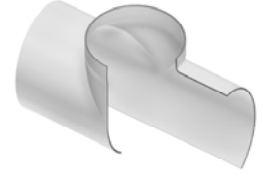


280-101883	4X2	1	10	300	27.09
280-101884	6X2	1	10	300	27.09
280-101885	8X2	1	10	300	27.09
280-101886	10X2	1	10	300	27.09
280-101887	12X2	1	10	300	28.54
280-101888	15X2	1	10	300	31.27
280-101889	18X2	1	10	300	31.27
280-101890	20X2	1	10	300	35.33
280-101891	4X3	1	10	300	32.62
280-101892	6X3	1	5	300	32.62
280-101893	8X3	1	5	300	32.62
280-101894	10X3	1	5	300	32.62
280-101895	12X3	1	5	300	35.33
280-101896	15X3	1	5	300	35.33
280-101897	18X3	1	10	300	35.33
280-101898	20X3	1	5	300	38.06
280-101899	6X4	1	10	300	38.06
280-101900	8X4	1	10	300	38.06
280-101901	10X4	1	10	300	38.06
280-101902	12X4	1	10	300	38.06
280-101903	15X4	1	10	300	38.06
280-101904	18X4	1	10	300	39.99
280-101905	20X4	1	10	300	40.77
280-101906	8X6	1	6	300	44.83
280-101907	10X6	1	8	300	44.83
280-101908	12X6	1	6	300	44.83
280-101909	15X6	1	8	300	47.56
280-101910	18X6	1	10	300	47.56
280-101911	20X6	1	7	300	54.35
280-101912	10X8	1	4	300	59.77
280-101913	12X8	1	3	300	59.77
280-101914	15X8	1	5	300	63.83
280-101915	18X8	1	5	300	67.96
280-101916	20X8	1	0	300	85.62
280-101917	12X10	1	3	300	78.83
280-101918	15X10	1	5	300	82.93
280-101919	18X10	1	4	300	84.31
280-101920	20X10	1	0	300	130.45
280-101921	15X12	1	0	300	118.24
280-101922	18X12	1	0	300	137.29
280-101923	20X12	1	0	300	156.34
280-101924	18X15	1	0	300	184.87
280-101925	20X15	1	0	300	218.85
280-101926	20X18	1	0	300	266.43

Part Number	Size	Std Pk	Mstr Ctn	Prod Code	MSRP
-------------	------	--------	----------	-----------	------

Same Size Saddle

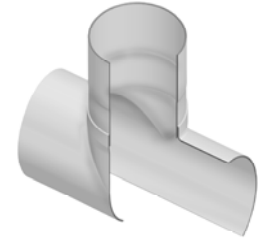
Socket



280-101937	6X6	1	10	300	37.35
280-101938	8X8	1	5	300	54.35
280-101939	10X10	1	5	300	74.72
280-101940	12X12	1	4	300	108.75
280-101941	15X15	1	0	300	163.08
280-101942	18X18	1	0	300	278.69
280-101943	20X20	1	0	300	380.64

Same Size Stub Saddle

Socket

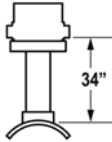


280-101949	6X6	1	5	300	65.21
280-101950	8X8	1	6	300	104.39
280-101951	10X10	1	0	300	127.74
280-101952	12X12	1	0	300	145.42
280-101953	15X15	1	0	300	217.53
280-101954	18X18	1	0	300	377.93
280-101955	20X20	1	0	300	441.80



Distributing Gate Riser
(Saddle x Riser x Pot)

Gates Not Included In MSRP
(See CHART #1 on Next Page)



Size	Prod Code	Part Number
6x4x8	301	2884-53234
8x4x8	301	2884-58234
8x6x10	301	2884-58534
10x4x8	301	2884-62434
10x6x10	301	2884-62634
10x8x12	301	2884-62834
12x4x8	301	2884-66434
12x6x10	301	2884-66634
12x8x12	301	2884-66834
12x10x15	301	2884-67034
15x4x8	301	2884-72334
15x6x10	301	2884-72634
15x8x12	301	2884-72834
15x10x15	301	2884-73034
15x12x18	301	2884-73234
18x4x8	301	2884-78434
18x6x10	301	2884-78634
18x8x12	301	2884-78834
18x10x15	301	2884-79034
18x12x18	301	2884-79234
20x4x8	301	2884-81434
20x6x10	301	2884-81634
20x8x12	301	2884-81834
20x10x15	301	2884-82034
20x12x18	301	2884-82234

HOW TO ORDER A DISTRIBUTING GATE RISER

Choose the Distributing Gate Riser size required:

Example: 6 x 4 x 8
(6" Saddle x 4" Riser x 8" Pot)
Part Number 2884-53234

Next, choose the Gate size required from CHART #1:

Example: 2-1/2" Gates
(Code Number "2")

Next, add this Code Number to the end of the Part Number:

Example: 2884-53234 2

Next, choose the position required for the gates from CHART #2:

Example: Standard 2-Way Gates
(Code Number "05")

Next, add this Code Number to the very end of the Part Number:

Example: 2884-532342 05

The Part Number is now complete for a
6" Saddle x 4" Riser x 8" Pot
with 2-1/2" Standard 2-Way Gates –

2884-53234205

HOW TO CALCULATE A DISTRIBUTING GATE RISER TOTAL MSRP-1 EACH WITH GATES INSTALLED

Find the base unit part number & price in MSRP-1:

Next, find the part number & price in MSRP-1 for the size of Gate required from CHART #1:

Next, multiply the Gate price by the number of Gates required:

Next, add this amount to the base unit price from MSRP-1 (See Chart 2 "Number of Outlets"), for the Total Price Each:



Fabricated Fittings Product
PVC Low Head PIP Fabricated Fittings, Risers & Accessories

CHART #1

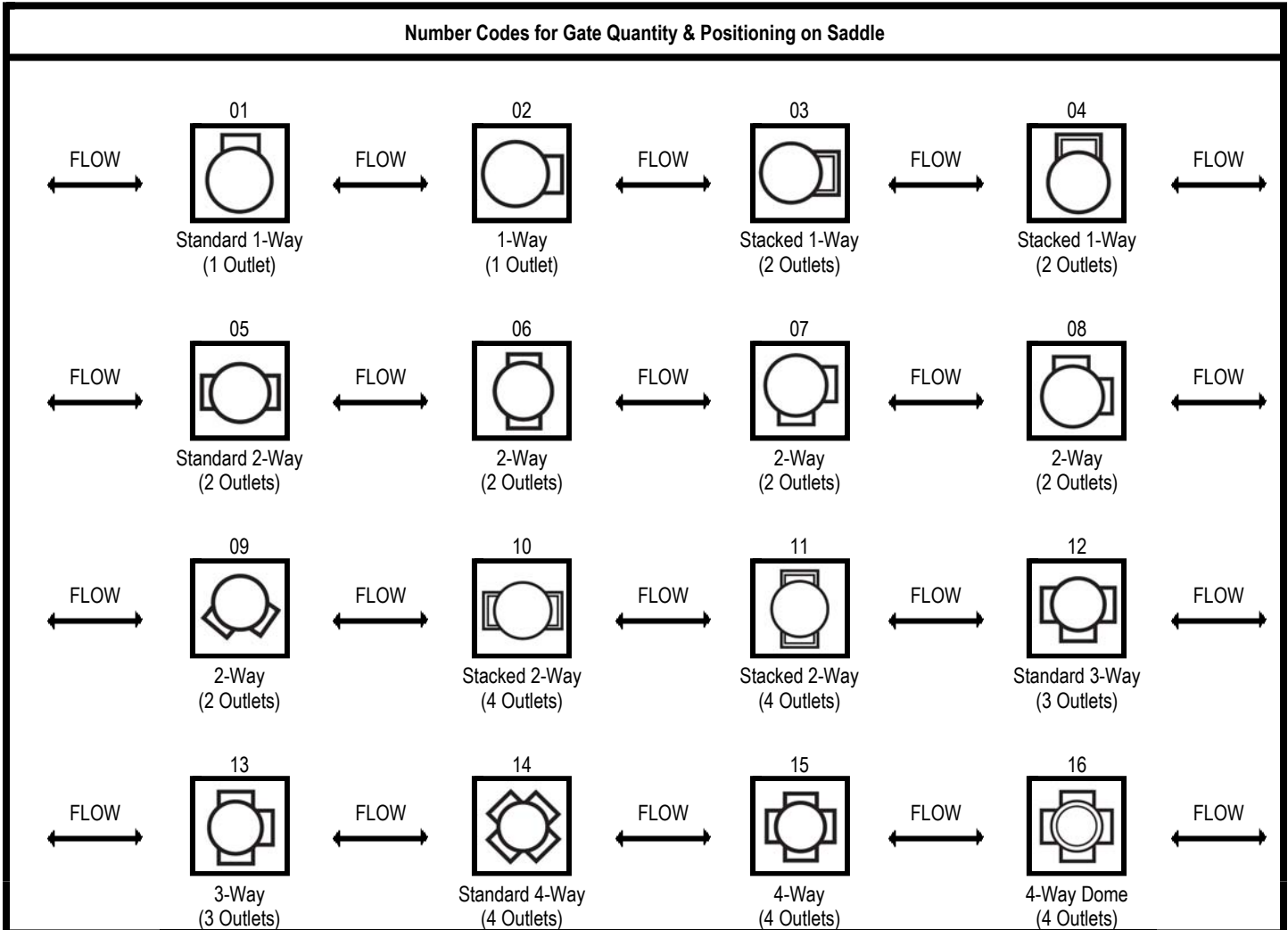
Part Number	Gate/Hole Size	Distributing Gate Size Code	Prod Code
280-108443	2" Gate	1	301
280-108444	2- 1/2" Gate	2	301
280-108445	3" Gate	3	301
280-108446	4" Gate	4	301

* Hole Size Codes **MUST** be chosen **ONLY** when ordering with **NO GATES INSTALLED**.

Number code for Gate Hole positioning must also be chosen from **CHART #2** below.

CHART #2

Number Codes for Gate Quantity & Positioning on Saddle





Distributing Gate Repair Unit (Riser x Pot)			
Gates Not Included In MSRP (See CHART #3 on Next Page)			
	Size	Prod Code	Part Number
	4x8	301	28840-42715__ _
	6x10	301	28840-53715__ _
	8x12	301	28840-59115__ _
	10x15	301	28840-63515__ _
	12x18	301	28840-67815__ _

HOW TO ORDER DISTRIBUTING GATE REPAIR UNIT

Choose the Repair Unit size required:
 Example: 4 x 8 Distributing Gate Repair Unit
 (4" Riser x 8" Pot
 Part Number 28840-42715__ _
Next, choose the Gate size required from CHART #3:
 Example: 2" Gate
 (Code Number "1")
Next, add this Code Number to the end of the Part Number:
 Example: 28840-42715_1__ _
Next, choose the position required for the gates from CHART #4:
 Example: 4-Way
 (Code Number "14")
Next, add this Code Number to the very end of the Part Number:
 Example: 28840-427151_1_4
The Part Number is now complete for a
4" Riser x 8" Pot Distributing Gate Riser Repair Unit with 2" 4-Way Gates –

28840-42715114

**HOW TO CALCULATE DISTRIBUTING GATE REPAIR UNIT
 TOTAL MSRP EACH WITH GATES INSTALLED**

Find the base unit part number & price in MSRP-1:
Next, find the part number & price in MSRP-1 for the size of Gate required from CHART #3:
Next, multiply the Gate price by the number of Gates required:
Next, add this amount to the base unit price from MSRP-1, (See Chart 4 "Number of Outlets"), for the total Price Each:



Fabricated Fittings Product
PVC Low Head PIP Fabricated Fittings, Risers & Accessories

CHART #3





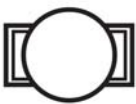



Gate/Hole Size	Gate Size Code	Prod Code
2" Gate	1	301
2- 1/2" Gate	2	301
3" Gate	3	301
4" Gate	4	301
2" Hole*	5	301
2- 1/2" Hole*	6	301
3" Hole*	7	301
4" Hole*	8	301

* Hole Size Codes MUST be chosen ONLY when ordering with NO GATES INSTALLED.

Number code for Gate Hole positioning must also be chosen from CHART #4 below.

NOTE: 3" Rite Flo Gates can be installed on 6" Risers ONLY.

CHART #4

Repair Unit Number Codes for Gate Quantity & Positioning			
02  1-Way (1 Outlet)	04  Stacked 1-Way (2 Outlets)	06  2-Way (2 Outlets)	08  2-Way (2 Outlets)
10  Stacked 2-Way (4 Outlets)	12  3-Way (3 Outlets)	14  4-Way (4 Outlets)	16  4-Way Dome (4 Outlets)

All Low Head PIP Fabricated Fittings showing size outlets of 4" and under are IPS size on that outlet