



**Fabricated Fittings Product**  
**PVC Low Head PIP Fabricated Fittings, Risers & Accessories**

**Crosses**

Part Number	Size	Std Pk	Mstr Ctn	Prod Code	MSRP
-------------	------	--------	----------	-----------	------

**Cross (continued)**

**Socket x Socket x Socket x Socket**

280-103293	10X3	1	0	300	88.95
280-103294	10X4	1	0	300	92.00
280-103295	10X6	1	0	300	103.06
280-103296	10X8	1	0	300	117.73
280-103304	12	1	0	300	199.97
280-103298	12X2	1	0	300	115.95
280-103299	12X3	1	0	300	117.13
280-103300	12X4	1	0	300	120.20
280-103301	12X6	1	0	300	130.04
280-103302	12X8	1	0	300	141.09
280-103303	12X10	1	0	300	170.51
280-103321	15	1	0	300	381.59
280-103313	15X2	1	0	300	170.51
280-103314	15X3	1	0	300	174.21
280-103315	15X4	1	0	300	182.82
280-103316	15X6	1	0	300	193.84
280-103317	15X8	1	0	300	208.56
280-103318	15X10	1	0	300	246.62
280-103319	15X12	1	0	300	296.92
280-103342	18	1	0	300	612.22
280-103332	18X2	1	0	300	331.26
280-103333	18X3	1	0	300	334.35
280-103334	18X4	1	0	300	337.42
280-103335	18X6	1	0	300	345.99
280-103336	18X8	1	0	300	355.79
280-103337	18X10	1	0	300	404.84
280-103338	18X12	1	0	300	430.69
280-103340	18X15	1	0	300	490.80
280-103354	20	1	0	300	806.11
280-103343	20X2	1	0	300	464.98
280-103344	20X3	1	0	300	468.66
280-103345	20X4	1	0	300	472.38
280-103346	20X6	1	0	300	483.40
280-103347	20X8	1	0	300	495.68
280-103348	20X10	1	0	300	531.23
280-103349	20X12	1	0	300	571.75
280-103351	20X15	1	0	300	598.73
280-103353	20X18	1	0	300	703.03

**Riser Extensions**



**Orchard Riser**

**Saddle x Riser**

2880-04030	4X4	1	0	301	35.52
2880-53230	6X4	1	35	301	35.52

Part Number	Size	Std Pk	Mstr Ctn	Prod Code	MSRP
-------------	------	--------	----------	-----------	------

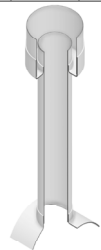
**Orchard Riser (continued)**

**Saddle x Riser**

2880-06030	6X6	1	25	301	61.33
2880-58230	8X4	1	25	301	35.52
2880-58530	8X6	1	25	301	46.59
2880-08030	8X8	1	12	301	85.89
2880-62430	10X4	1	30	301	36.79
2880-62630	10X6	1	20	301	46.59
2880-62830	10X8	1	16	301	63.79
2880-10030	10X10	1	6	301	122.65
2880-66430	12X4	1	25	301	38.01
2880-66630	12X6	1	20	301	46.59
2880-66830	12X8	1	12	301	63.79
2880-67030	12X10	1	9	301	88.31
2880-12030	12X12	1	6	301	171.75
2880-72430	15X4	1	25	301	40.46
2880-72630	15X6	1	25	301	53.94
2880-72830	15X8	1	12	301	72.39
2880-73030	15X10	1	9	301	100.59
2880-73230	15X12	1	6	301	138.62
2880-15030	15X15	1	4	301	287.08
2880-78430	18X4	1	25	301	44.20
2880-78630	18X6	1	25	301	52.46
2880-78830	18X8	1	10	301	76.09
2880-79030	18X10	1	9	301	101.82
2880-79230	18X12	1	6	301	157.01
2880-79530	18X15	1	4	301	226.96
2880-18030	18X18	1	3	301	430.62
2880-81430	20X4	1	0	301	46.62
2880-81630	20X6	1	12	301	61.36
2880-81830	20X8	1	12	301	92.00
2880-82030	20X10	1	6	301	143.56
2880-82230	20X12	1	5	301	174.21
2880-82530	20X15	1	4	301	256.46
2880-82830	20X18	1	0	301	315.31
2880-20030	20X20	1	2	301	555.82

**Erosion Pot Riser**

**Saddle x Riser x Pot**



2881-53232	6X4X8	1	16	301	67.99
2881-06032	6X6X10	1	0	301	81.36
2881-58232	8X4X8	1	20	301	67.99
2881-58532	8X6X10	1	0	301	81.36
2881-08032	8X8X12	1	9	301	115.05
2881-62432	10X4X8	1	16	301	67.99
2881-62632	10X6X10	1	0	301	81.36
2881-62832	10X8X12	1	12	301	115.05
2881-10032	10X10X15	1	0	301	158.07
2881-66432	12X4X8	1	20	301	67.99
2881-66632	12X6X10	1	12	301	81.36

**Fabricated Fittings Product**  
**PVC Low Head PIP Fabricated Fittings, Risers & Accessories**



**Riser Extensions**

Part Number	Size	Std Pk	Mstr Ctn	Prod Code	MSRP
-------------	------	--------	----------	-----------	------

**Erosion Pot Riser (continued)**

**Saddle x Riser x Pot**

2881-66832	12X8X12	1	12	301	115.05
2881-67032	12X10X15	1	0	301	158.07
2881-12032	12X12X18	1	0	301	209.24
2881-72432	15X4X8	1	0	301	67.99
2881-72632	15X6X10	1	12	301	81.36
2881-72832	15X8X12	1	0	301	115.05
2881-73032	15X10X15	1	0	301	158.07
2881-73232	15X12X18	1	0	301	209.24
2881-15032	15X15X20	1	0	301	308.03
2881-78432	18X4X8	1	0	301	67.99
2881-78632	18X6X10	1	0	301	81.36
2881-78832	18X8X12	1	0	301	115.05
2881-79032	18X10X15	1	0	301	158.07
2881-79232	18X12X18	1	0	301	209.24
2881-79532	18X15X20	1	0	301	308.03
2881-81432	20X4X8	1	0	301	67.99
2881-81632	20X6X10	1	0	301	81.36
2881-81832	20X8X12	1	0	301	115.05
2881-82032	20X10X15	1	0	301	158.07
2881-82232	20X12X18	1	0	301	209.24
2881-82532	20X15X20	1	0	301	308.03



**Mechanical Vent Assembly**

**Saddle x Riser/Vent**

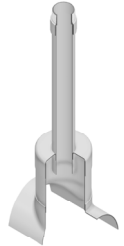
2882-420	4X2	1	10	301	67.43
2882-422	4X3	1	0	301	104.24
2882-528	6X2	1	10	301	67.43
2882-530	6X3	1	5	301	104.24
2882-532	6X4	1	5	301	144.79
2882-578	8X2	1	8	301	67.43
2882-580	8X3	1	4	301	104.24
2882-582	8X4	1	8	301	144.79
2882-621	10X2	1	10	301	67.43
2882-623	10X3	1	5	301	104.24
2882-624	10X4	1	3	301	144.79
2882-661	12X2	1	10	301	67.43
2882-663	12X3	1	5	301	104.24
2882-664	12X4	1	4	301	144.79
2882-721	15X2	1	0	301	67.44
2882-723	15X3	1	6	301	104.24
2882-724	15X4	1	4	301	144.79
2882-781	18X2	1	0	301	67.44
2882-783	18X3	1	0	301	104.24
2882-784	18X4	1	4	301	144.79
2882-811	20X2	1	0	301	67.44
2882-813	20X3	1	0	301	104.24

Part Number	Size	Std Pk	Mstr Ctn	Prod Code	MSRP
-------------	------	--------	----------	-----------	------

**Mechanical Vent Assembly (continued)**

**Saddle x Riser/Vent**

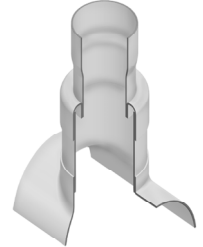
2882-814	20X4	1	5	301	144.79
----------	------	---	---	-----	--------



**Mechanical Vent Riser**

**Saddle x Riser/Vent x Chamber**

2883-52842	6X2X4	1	0	301	78.52
2883-57842	8X2X6	1	0	301	84.66
2883-58042	8X3X6	1	25	301	106.71
2883-62142	10X2X8	1	12	301	103.06
2883-62342	10X3X8	1	8	301	122.65
2883-62442	10X4X8	1	12	301	144.79
2883-66142	12X2X10	1	0	301	132.48
2883-66342	12X3X10	1	16	301	150.88
2883-66442	12X4X10	1	12	301	171.75
2883-72442	15X4X12	1	6	301	223.27
2883-78442	18X4X15	1	0	301	288.31
2883-81442	20X4X18	1	0	301	406.12



**Vent Base**

**Saddle x Riser x Outlet**

2888-532020	6X4X2	1	2	301	50.94
2888-585030	8X6X3	1	0	301	157.60
2888-585040	8X6X4	1	4	301	79.73
2888-628060	10X8X6	1	0	301	122.65
2888-670060	12X10X6	1	0	301	130.04
2888-732080	15X12X8	1	0	301	195.05
2888-795080	18X15X8	1	0	301	269.94
2888-828080	20X18X8	1	0	301	488.35

**Wyes**

**Wye**

**Socket x Socket x Socket**

2875-060	6	1	2	300	86.11
2875-080	8	1	0	300	113.89
2875-100	10	1	0	300	148.17
2875-120	12	1	0	300	206.43
2875-150	15	1	0	300	319.35

