



Fabricated Fittings Product

**PVC Low Head PIP Fabricated Fittings, Risers & Accessories**

**Non 90° Ells**

Part Number	Size	Std Pk	Mstr Ctn	Prod Code	MSRP
-------------	------	--------	----------	-----------	------

**15° Elbow (continued)**

**Socket x Socket**

280-100239	18	1	0	300	210.49
280-100240	20	1	0	300	272.46



**22-1/2° Elbow**

**Socket x Socket**

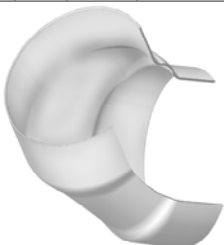
280-100354	6	1	4	300	24.55
280-100355	8	1	3	300	34.89
280-100356	10	1	2	300	50.34
280-100357	12	1	2	300	69.73
280-100358	15	1	0	300	120.09
280-100359	18	1	0	300	210.49
280-100360	20	1	0	300	272.46



**30° Elbow**

**Socket x Socket**

280-100474	6	1	8	300	41.29
280-100475	8	1	4	300	60.64
280-100476	10	1	2	300	74.89
280-100477	12	1	2	300	122.73
280-100478	15	1	0	300	197.60
280-100479	18	1	0	300	349.95
280-100480	20	1	0	300	388.73



**45° Elbow**

**Socket x Socket**

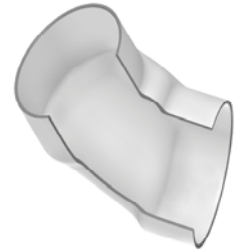
280-100592	6	1	4	300	41.29
280-100593	8	1	4	300	60.64
280-100594	10	1	2	300	74.89
280-100595	12	1	2	300	122.73
280-100596	15	1	0	300	197.60
280-100597	18	1	0	300	349.95
280-100598	20	1	0	300	388.73

Part Number	Size	Std Pk	Mstr Ctn	Prod Code	MSRP
-------------	------	--------	----------	-----------	------

**60° Elbow**

**Socket x Socket**

280-100702	6	1	4	300	77.48
280-100703	8	1	2	300	95.53
280-100704	10	1	0	300	152.41
280-100705	12	1	0	300	200.16
280-100706	15	1	0	300	326.72
280-100707	18	1	0	300	565.64
280-100708	20	1	0	300	762.03



**Couplings**

**Coupling**

**Socket x Socket**

280-100001	4 IPS	1	10	300	16.73
280-100002	6	1	5	300	20.64
280-100003	8	1	6	300	23.23
280-100004	10	1	4	300	32.29
280-100005	12	1	4	300	43.93
280-100006	15	1	0	300	77.48
280-100007	18	1	0	300	138.15
280-100008	20	1	0	300	170.45



**Reducer Coupling**

**Coupling - Reducer**

**Socket x Socket**

280-100928	8X6	1	2	300	36.16
2829-626	10X6	1	8	300	145.66
280-100931	10X8	1	4	300	55.54
280-100933	12X6	1	6	300	207.71
280-100934	12X8	1	4	300	161.43
280-100935	12X10	1	4	300	80.09
2829-726	15X6	1	0	300	360.45
2829-728	15X8	1	0	309	258.89
280-100939	15X10	1	0	300	184.07
280-100940	15X12	1	0	300	121.35



**Fabricated Fittings Product**  
**PVC Low Head PIP Fabricated Fittings, Risers & Accessories**



**Reducer Coupling**

Part Number	Size	Std Pk	Mstr Ctn	Prod Code	MSRP
<b>Coupling - Reducer (continued)</b>					
<b>Socket x Socket</b>					
2829-786	18X6	1	0	300	541.29
2829-788	18X8	1	0	300	509.25
280-100944	18X10	1	0	300	445.57
280-100945	18X12	1	0	300	398.99
280-100946	18X15	1	0	300	195.01
2829-816	20X6	1	0	300	833.51
2829-818	20X8	1	0	300	793.57
2829-820	20X10	1	0	300	733.73
2829-822	20X12	1	0	300	674.36
2829-825	20X15	1	0	300	551.48
280-100953	20X18	1	0	300	285.39

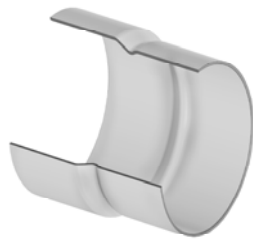


**PIP x IPS Coupling - Reducer**

**Socket x Socket**

280-101536	6X4	1	4	300	29.04
280-101537	8X6	1	8	300	41.98
280-101538	10X8	1	4	300	55.54
280-101534	12X8	1	4	300	161.43
280-101539	12X10	1	4	300	96.84
280-101540	15X12	1	0	300	154.93

**Adapters**



**IPS x PIP Adapter**

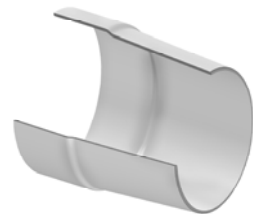
**Socket x Socket**

280-101649	6	1	4	300	32.29
280-101650	8	1	4	300	47.75
280-101651	10	1	4	300	74.89
280-101652	12	1	4	300	105.88

**Concrete Adapter**

**Socket x Concrete**

280-101761	6X6	1	5	300	30.99
280-101762	8X8	1	6	300	45.18

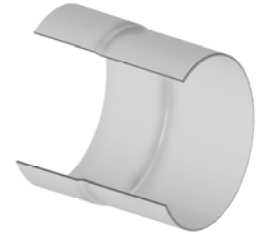


Part Number	Size	Std Pk	Mstr Ctn	Prod Code	MSRP
-------------	------	--------	----------	-----------	------

**Concrete Adapter (continued)**

**Socket x Concrete**

280-101763	10X10	1	4	300	69.73
280-101764	12X12	1	4	300	98.11
280-101765	12X14	1	0	300	104.57
280-101766	15X14	1	0	300	144.60
280-101767	15X15	1	0	300	148.52
280-101768	15X16	1	0	300	151.11
280-101769	18X18	1	0	300	175.63
280-101770	20X20	1	0	300	219.54



**Linegate Valve Adapter**

**Linegate x Socket**

280-101777	6	1	6	300	25.74
280-101778	8	1	6	300	29.20
280-101779	10	1	4	300	46.53
280-101780	12	1	4	300	65.87
280-101781	15	1	0	300	113.62
2845-180	18	1	0	300	163.60



**Linegate Valve PIP Adapter**

**Linegate x Socket**

2845-180P	18	1	0	300	163.60
-----------	----	---	---	-----	--------

**Crosses**

**Cross**

**Socket x Socket x Socket x Socket**

280-103286	6	1	0	300	81.34
280-103283	6X2	1	0	300	64.56
280-103284	6X3	1	0	300	64.56
280-103285	6X4	1	4	300	70.98
280-103291	8	1	0	300	111.09
280-103287	8X2	1	0	300	90.37
280-103288	8X3	1	0	300	90.37
280-103289	8X4	1	0	300	96.84
280-103290	8X6	1	0	300	101.97
280-103297	10	1	0	300	151.11
280-103292	10X2	1	2	300	90.37

