



Fabricated Fittings Product

PVC Low Head PIP Fabricated Fittings, Risers & Accessories

PVC Low Head PIP Fabricated Fittings, Risers & Accessories



PRODUCT

Contact Spears® for any Information not found.

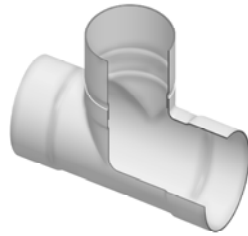
Fabricated Fittings Product
PVC Low Head PIP Fabricated Fittings, Risers & Accessories



Tees

Part Number	Size	Std Pk	Mstr Ctn	Prod Code	MSRP
-------------	------	--------	----------	-----------	------

Tee



Socket x Socket x Socket

280-102502	6	1	8	300	49.04
280-102499	6X2	1	6	300	38.73
280-102500	6X3	1	4	300	41.98
280-102501	6X4	1	4	300	43.93
280-102507	8	1	2	300	77.67
280-102503	8X2	1	2	300	49.96
280-102504	8X3	1	3	300	59.36
280-102505	8X4	1	2	300	61.95
280-102506	8X6	1	0	300	70.98
280-102513	10	1	0	300	96.85
280-102508	10X2	1	0	300	78.75
280-102509	10X3	1	0	300	80.04
280-102510	10X4	1	0	300	82.03
280-102511	10X6	1	0	300	83.93
280-102512	10X8	1	0	300	89.99
280-102520	12	1	0	300	157.53
280-102514	12X2	1	2	300	103.31
280-102515	12X3	1	0	300	109.81
280-102516	12X4	1	0	300	114.91
280-102517	12X6	1	0	300	117.19
280-102518	12X8	1	0	300	122.73
280-102519	12X10	1	0	300	134.29
280-102528	15	1	0	300	312.55
280-102521	15X2	1	0	300	167.86
280-102522	15X3	1	0	300	167.86
280-102523	15X4	1	0	300	174.34
280-102524	15X6	1	0	300	179.48
280-102525	15X8	1	0	300	200.16
280-102526	15X10	1	0	300	223.38
280-102527	15X12	1	0	300	260.84
280-102537	18	1	0	300	543.74
280-102529	18X2	1	0	300	316.38
280-102530	18X3	1	0	300	318.93
280-102531	18X4	1	0	300	321.56
280-102532	18X6	1	0	300	328.01
280-102533	18X8	1	0	300	333.20
280-102534	18X10	1	0	300	364.20
280-102535	18X12	1	0	300	401.67
280-102536	18X15	1	0	300	439.11
280-102547	20	1	0	300	672.87
280-102538	20X2	1	0	300	400.36
280-102539	20X3	1	0	300	404.49
280-102540	20X4	1	0	300	410.67
280-102541	20X6	1	0	300	423.62
280-102542	20X8	1	0	300	432.64

Part Number	Size	Std Pk	Mstr Ctn	Prod Code	MSRP
-------------	------	--------	----------	-----------	------

Tee (continued)

Socket x Socket x Socket

280-102543	20X10	1	0	300	479.12
280-102544	20X12	1	0	300	508.84
280-102545	20X15	1	0	300	546.34
280-102546	20X18	1	0	300	614.74

90° Ells

90° Elbow

Socket x Socket

280-100812	6	1	4	300	77.48
280-100813	8	1	2	300	95.53
280-100814	10	1	0	300	152.41
280-100815	12	1	0	300	200.16
280-100816	15	1	0	300	326.72
280-100817	18	1	0	300	565.64
280-100818	20	1	0	300	762.03

Non 90° Ells

11-1/4° Elbow

Socket x Socket

280-100114	6	1	10	300	24.55
280-100115	8	1	8	300	34.89
280-100116	10	1	2	300	50.34
280-100117	12	1	2	300	69.73
280-100118	15	1	0	300	120.09
280-100119	18	1	0	300	206.65
280-100120	20	1	0	300	262.16

15° Elbow

Socket x Socket

280-100234	6	1	10	300	24.55
280-100235	8	1	4	300	34.89
280-100236	10	1	2	300	50.34
280-100237	12	1	2	300	69.73
280-100238	15	1	0	300	120.09



Fabricated Fittings Product

PVC Low Head PIP Fabricated Fittings, Risers & Accessories

Non 90° Ells

Part Number	Size	Std Pk	Mstr Ctn	Prod Code	MSRP
-------------	------	--------	----------	-----------	------

15° Elbow (continued)

Socket x Socket

280-100239	18	1	0	300	210.49
280-100240	20	1	0	300	272.46



22-1/2° Elbow

Socket x Socket

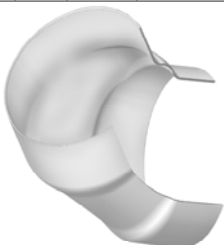
280-100354	6	1	4	300	24.55
280-100355	8	1	3	300	34.89
280-100356	10	1	2	300	50.34
280-100357	12	1	2	300	69.73
280-100358	15	1	0	300	120.09
280-100359	18	1	0	300	210.49
280-100360	20	1	0	300	272.46



30° Elbow

Socket x Socket

280-100474	6	1	8	300	41.29
280-100475	8	1	4	300	60.64
280-100476	10	1	2	300	74.89
280-100477	12	1	2	300	122.73
280-100478	15	1	0	300	197.60
280-100479	18	1	0	300	349.95
280-100480	20	1	0	300	388.73



45° Elbow

Socket x Socket

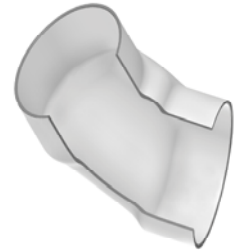
280-100592	6	1	4	300	41.29
280-100593	8	1	4	300	60.64
280-100594	10	1	2	300	74.89
280-100595	12	1	2	300	122.73
280-100596	15	1	0	300	197.60
280-100597	18	1	0	300	349.95
280-100598	20	1	0	300	388.73

Part Number	Size	Std Pk	Mstr Ctn	Prod Code	MSRP
-------------	------	--------	----------	-----------	------

60° Elbow

Socket x Socket

280-100702	6	1	4	300	77.48
280-100703	8	1	2	300	95.53
280-100704	10	1	0	300	152.41
280-100705	12	1	0	300	200.16
280-100706	15	1	0	300	326.72
280-100707	18	1	0	300	565.64
280-100708	20	1	0	300	762.03



Couplings

Coupling

Socket x Socket

280-100001	4 IPS	1	10	300	16.73
280-100002	6	1	5	300	20.64
280-100003	8	1	6	300	23.23
280-100004	10	1	4	300	32.29
280-100005	12	1	4	300	43.93
280-100006	15	1	0	300	77.48
280-100007	18	1	0	300	138.15
280-100008	20	1	0	300	170.45



Reducer Coupling

Coupling - Reducer

Socket x Socket

280-100928	8X6	1	2	300	36.16
2829-626	10X6	1	8	300	145.66
280-100931	10X8	1	4	300	55.54
280-100933	12X6	1	6	300	207.71
280-100934	12X8	1	4	300	161.43
280-100935	12X10	1	4	300	80.09
2829-726	15X6	1	0	300	360.45
2829-728	15X8	1	0	309	258.89
280-100939	15X10	1	0	300	184.07
280-100940	15X12	1	0	300	121.35



Fabricated Fittings Product
PVC Low Head PIP Fabricated Fittings, Risers & Accessories



Reducer Coupling

Part Number	Size	Std Pk	Mstr Ctn	Prod Code	MSRP
Coupling - Reducer (continued)					
Socket x Socket					
2829-786	18X6	1	0	300	541.29
2829-788	18X8	1	0	300	509.25
280-100944	18X10	1	0	300	445.57
280-100945	18X12	1	0	300	398.99
280-100946	18X15	1	0	300	195.01
2829-816	20X6	1	0	300	833.51
2829-818	20X8	1	0	300	793.57
2829-820	20X10	1	0	300	733.73
2829-822	20X12	1	0	300	674.36
2829-825	20X15	1	0	300	551.48
280-100953	20X18	1	0	300	285.39

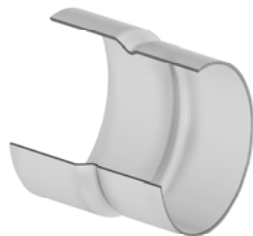


PIP x IPS Coupling - Reducer

Socket x Socket

280-101536	6X4	1	4	300	29.04
280-101537	8X6	1	8	300	41.98
280-101538	10X8	1	4	300	55.54
280-101534	12X8	1	4	300	161.43
280-101539	12X10	1	4	300	96.84
280-101540	15X12	1	0	300	154.93

Adapters



IPS x PIP Adapter

Socket x Socket

280-101649	6	1	4	300	32.29
280-101650	8	1	4	300	47.75
280-101651	10	1	4	300	74.89
280-101652	12	1	4	300	105.88

Concrete Adapter

Socket x Concrete

280-101761	6X6	1	5	300	30.99
280-101762	8X8	1	6	300	45.18

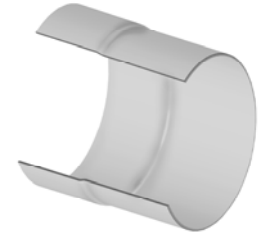


Part Number	Size	Std Pk	Mstr Ctn	Prod Code	MSRP
-------------	------	--------	----------	-----------	------

Concrete Adapter (continued)

Socket x Concrete

280-101763	10X10	1	4	300	69.73
280-101764	12X12	1	4	300	98.11
280-101765	12X14	1	0	300	104.57
280-101766	15X14	1	0	300	144.60
280-101767	15X15	1	0	300	148.52
280-101768	15X16	1	0	300	151.11
280-101769	18X18	1	0	300	175.63
280-101770	20X20	1	0	300	219.54



Linegate Valve Adapter

Linegate x Socket

280-101777	6	1	6	300	25.74
280-101778	8	1	6	300	29.20
280-101779	10	1	4	300	46.53
280-101780	12	1	4	300	65.87
280-101781	15	1	0	300	113.62
2845-180	18	1	0	300	163.60



Linegate Valve PIP Adapter

Linegate x Socket

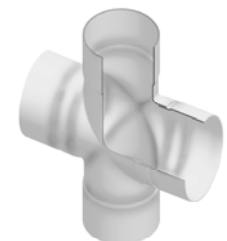
2845-180P	18	1	0	300	163.60
-----------	----	---	---	-----	--------

Crosses

Cross

Socket x Socket x Socket x Socket

280-103286	6	1	0	300	81.34
280-103283	6X2	1	0	300	64.56
280-103284	6X3	1	0	300	64.56
280-103285	6X4	1	4	300	70.98
280-103291	8	1	0	300	111.09
280-103287	8X2	1	0	300	90.37
280-103288	8X3	1	0	300	90.37
280-103289	8X4	1	0	300	96.84
280-103290	8X6	1	0	300	101.97
280-103297	10	1	0	300	151.11
280-103292	10X2	1	2	300	90.37





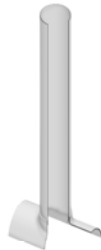
Fabricated Fittings Product

PVC Low Head PIP Fabricated Fittings, Risers & Accessories

Crosses

Part Number	Size	Std Pk	Mstr Ctn	Prod Code	MSRP
Cross (continued)					
Socket x Socket x Socket x Socket					
280-103293	10X3	1	0	300	93.63
280-103294	10X4	1	0	300	96.84
280-103295	10X6	1	0	300	108.48
280-103296	10X8	1	0	300	123.93
280-103304	12	1	0	300	210.49
280-103298	12X2	1	0	300	122.05
280-103299	12X3	1	0	300	123.29
280-103300	12X4	1	0	300	126.53
280-103301	12X6	1	0	300	136.88
280-103302	12X8	1	0	300	148.52
280-103303	12X10	1	0	300	179.48
280-103321	15	1	0	300	401.67
280-103313	15X2	1	0	300	179.48
280-103314	15X3	1	0	300	183.38
280-103315	15X4	1	0	300	192.44
280-103316	15X6	1	0	300	204.04
280-103317	15X8	1	0	300	219.54
280-103318	15X10	1	0	300	259.60
280-103319	15X12	1	0	300	312.55
280-103342	18	1	0	300	644.44
280-103332	18X2	1	0	300	348.69
280-103333	18X3	1	0	300	351.95
280-103334	18X4	1	0	300	355.18
280-103335	18X6	1	0	300	364.20
280-103336	18X8	1	0	300	374.52
280-103337	18X10	1	0	300	426.15
280-103338	18X12	1	0	300	453.36
280-103340	18X15	1	0	300	516.63
280-103354	20	1	0	300	848.54
280-103343	20X2	1	0	300	489.45
280-103344	20X3	1	0	300	493.33
280-103345	20X4	1	0	300	497.24
280-103346	20X6	1	0	300	508.84
280-103347	20X8	1	0	300	521.77
280-103348	20X10	1	0	300	559.19
280-103349	20X12	1	0	300	601.84
280-103351	20X15	1	0	300	630.24
280-103353	20X18	1	0	300	740.03

Riser Extensions



Orchard Riser

Saddle x Riser

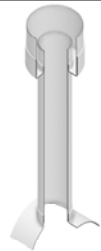
2880-04030	4X4	1	0	301	37.39
2880-53230	6X4	1	35	301	37.39

Part Number	Size	Std Pk	Mstr Ctn	Prod Code	MSRP
-------------	------	--------	----------	-----------	------

Orchard Riser (continued)

Saddle x Riser

2880-06030	6X6	1	25	301	64.56
2880-58230	8X4	1	25	301	37.39
2880-58530	8X6	1	25	301	49.04
2880-08030	8X8	1	12	301	90.41
2880-62430	10X4	1	30	301	38.73
2880-62630	10X6	1	20	301	49.04
2880-62830	10X8	1	16	301	67.15
2880-10030	10X10	1	6	301	129.11
2880-66430	12X4	1	25	301	40.01
2880-66630	12X6	1	20	301	49.04
2880-66830	12X8	1	12	301	67.15
2880-67030	12X10	1	9	301	92.96
2880-12030	12X12	1	6	301	180.79
2880-72430	15X4	1	25	301	42.59
2880-72630	15X6	1	25	301	56.78
2880-72830	15X8	1	12	301	76.20
2880-73030	15X10	1	9	301	105.88
2880-73230	15X12	1	6	301	145.92
2880-15030	15X15	1	4	301	302.19
2880-78430	18X4	1	25	301	46.53
2880-78630	18X6	1	25	301	55.22
2880-78830	18X8	1	10	301	80.09
2880-79030	18X10	1	9	301	107.18
2880-79230	18X12	1	6	301	165.27
2880-79530	18X15	1	4	301	238.91
2880-18030	18X18	1	3	301	453.28
2880-81430	20X4	1	0	301	49.07
2880-81630	20X6	1	12	301	64.59
2880-81830	20X8	1	12	301	96.84
2880-82030	20X10	1	6	301	151.12
2880-82230	20X12	1	5	301	183.38
2880-82530	20X15	1	4	301	269.96
2880-82830	20X18	1	0	301	331.91
2880-20030	20X20	1	2	301	585.07



Erosion Pot Riser

Saddle x Riser x Pot

2881-53232	6X4X8	1	16	301	71.57
2881-06032	6X6X10	1	0	301	85.64
2881-58232	8X4X8	1	20	301	71.57
2881-58532	8X6X10	1	0	301	85.64
2881-08032	8X8X12	1	9	301	121.11
2881-62432	10X4X8	1	16	301	71.57
2881-62632	10X6X10	1	0	301	85.64
2881-62832	10X8X12	1	12	301	121.11
2881-10032	10X10X15	1	0	301	166.39
2881-66432	12X4X8	1	20	301	71.57
2881-66632	12X6X10	1	12	301	85.64

Fabricated Fittings Product
PVC Low Head PIP Fabricated Fittings, Risers & Accessories



Riser Extensions

Part Number	Size	Std Pk	Mstr Ctn	Prod Code	MSRP
Erosion Pot Riser (continued)					
Saddle x Riser x Pot					
2881-66832	12X8X12	1	12	301	121.11
2881-67032	12X10X15	1	0	301	166.39
2881-12032	12X12X18	1	0	301	220.25
2881-72432	15X4X8	1	0	301	71.57
2881-72632	15X6X10	1	12	301	85.64
2881-72832	15X8X12	1	0	301	121.11
2881-73032	15X10X15	1	0	301	166.39
2881-73232	15X12X18	1	0	301	220.25
2881-15032	15X15X20	1	0	301	324.24
2881-78432	18X4X8	1	0	301	71.57
2881-78632	18X6X10	1	0	301	85.64
2881-78832	18X8X12	1	0	301	121.11
2881-79032	18X10X15	1	0	301	166.39
2881-79232	18X12X18	1	0	301	220.25
2881-79532	18X15X20	1	0	301	324.24
2881-81432	20X4X8	1	0	301	71.57
2881-81632	20X6X10	1	0	301	85.64
2881-81832	20X8X12	1	0	301	121.11
2881-82032	20X10X15	1	0	301	166.39
2881-82232	20X12X18	1	0	301	220.25
2881-82532	20X15X20	1	0	301	324.24



Mechanical Vent Assembly

Saddle x Riser/Vent

2882-420	4X2	1	10	301	70.98
2882-422	4X3	1	0	301	109.73
2882-528	6X2	1	10	301	70.98
2882-530	6X3	1	5	301	109.73
2882-532	6X4	1	5	301	152.41
2882-578	8X2	1	8	301	70.98
2882-580	8X3	1	4	301	109.73
2882-582	8X4	1	8	301	152.41
2882-621	10X2	1	10	301	70.98
2882-623	10X3	1	5	301	109.73
2882-624	10X4	1	3	301	152.41
2882-661	12X2	1	10	301	70.98
2882-663	12X3	1	5	301	109.73
2882-664	12X4	1	4	301	152.41
2882-721	15X2	1	0	301	70.99
2882-723	15X3	1	6	301	109.73
2882-724	15X4	1	4	301	152.41
2882-781	18X2	1	0	301	70.99
2882-783	18X3	1	0	301	109.73
2882-784	18X4	1	4	301	152.41
2882-811	20X2	1	0	301	70.99
2882-813	20X3	1	0	301	109.73

Part Number	Size	Std Pk	Mstr Ctn	Prod Code	MSRP
-------------	------	--------	----------	-----------	------

Mechanical Vent Assembly (continued)

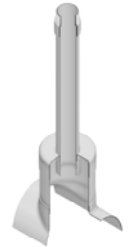
Saddle x Riser/Vent

2882-814	20X4	1	5	301	152.41
----------	------	---	---	-----	--------

Mechanical Vent Riser

Saddle x Riser/Vent x Chamber

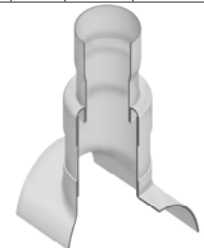
2883-52842	6X2X4	1	0	301	82.65
2883-57842	8X2X6	1	0	301	89.12
2883-58042	8X3X6	1	25	301	112.33
2883-62142	10X2X8	1	12	301	108.48
2883-62342	10X3X8	1	8	301	129.11
2883-62442	10X4X8	1	12	301	152.41
2883-66142	12X2X10	1	6	301	139.45
2883-66342	12X3X10	1	16	301	158.82
2883-66442	12X4X10	1	12	301	180.79
2883-72442	15X4X12	1	6	301	235.02
2883-78442	18X4X15	1	4	301	303.48
2883-81442	20X4X18	1	0	301	427.49



Vent Base

Saddle x Riser x Outlet

2888-532020	6X4X2	1	2	301	53.62
2888-585030	8X6X3	1	0	301	165.89
2888-585040	8X6X4	1	4	301	83.93
2888-628060	10X8X6	1	0	301	129.11
2888-670060	12X10X6	1	0	301	136.88
2888-732080	15X12X8	1	0	301	205.32
2888-795080	18X15X8	1	0	301	284.15
2888-828080	20X18X8	1	0	301	514.05

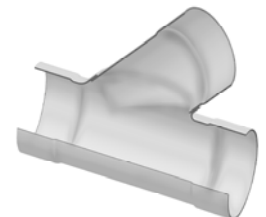


Wyes

Wye

Socket x Socket x Socket

2875-060	6	1	2	300	90.64
2875-080	8	1	0	300	119.88
2875-100	10	1	0	300	155.97
2875-120	12	1	0	300	217.29
2875-150	15	1	0	300	336.16





Fabricated Fittings Product

PVC Low Head PIP Fabricated Fittings, Risers & Accessories

Wyes

Part Number	Size	Std Pk	Mstr Ctn	Prod Code	MSRP
-------------	------	--------	----------	-----------	------

Wye (continued)

Socket x Socket x Socket

2875-183	18	1	0	300	808.31
2875-200	20	1	0	300	1083.96

Wye - Reducing

Socket x Socket x Socket

2875-532	6X4	1	4	300	70.68
2875-585	8X6	1	0	300	104.57
2875-626	10X6	1	0	300	133.73
2875-628	10X8	1	0	300	141.06
2875-666	12X6	1	0	300	146.97
2875-668	12X8	1	0	300	168.72
2875-670	12X10	1	0	300	180.23
2875-726	15X6	1	0	300	198.12
2875-728	15X8	1	0	300	214.73
2875-730	15X10	1	0	300	235.17
2875-732	15X12	1	0	300	258.19
2875-786	18X6	1	0	300	319.57
2875-788	18X8	1	0	300	324.62
2875-790	18X10	1	0	300	354.74
2875-792	18X12	1	0	300	391.23
2875-795	18X15	1	0	300	427.73
2875-816	20X6	1	0	300	399.44
2875-818	20X8	1	0	300	405.76
2875-820	20X10	1	0	300	443.41
2875-822	20X12	1	0	300	489.03
2875-825	20X15	1	0	300	534.67
2875-828	20X18	1	0	300	940.72

Double Wye

Socket x Socket x Socket x Socket

2876-060	6	1	2	300	142.35
2876-080	8	1	0	300	162.16
2876-100	10	1	0	300	271.54
2876-120	12	1	0	300	324.31
2876-150	15	1	0	300	501.73
2876-183	18	1	0	300	1360.40
2876-200	20	1	0	300	1933.94

Part Number	Size	Std Pk	Mstr Ctn	Prod Code	MSRP
-------------	------	--------	----------	-----------	------

Double Wye - Reducing

Socket x Socket x Socket x Socket

2876-585	8X6	1	0	300	114.48
2876-626	10X6	1	0	300	162.16
2876-628	10X8	1	0	300	179.35
2876-666	12X6	1	0	300	219.36
2876-668	12X8	1	0	300	251.82
2876-670	12X10	1	0	300	301.06
2876-726	15X6	1	0	300	295.69
2876-728	15X8	1	0	300	320.47
2876-730	15X10	1	0	300	351.02
2876-732	15X12	1	0	300	475.94
2876-786	18X6	1	0	300	476.99
2876-788	18X8	1	0	300	484.51
2876-790	18X10	1	0	300	529.45
2876-792	18X12	1	0	300	583.94
2876-795	18X15	1	0	300	638.40
2876-816	20X6	1	0	300	658.80
2876-818	20X8	1	0	300	675.98
2876-820	20X10	1	0	300	691.97
2876-822	20X12	1	0	300	729.89
2876-825	20X15	1	0	300	798.01
2876-828	20X18	1	0	300	1475.80

Caps

End Cap

Socket

280-107539	4 IPS	1	10	300	11.62
280-107540	6	1	10	300	12.91
280-107541	8	10	0	300	21.93
280-107542	10	1	10	300	34.89
280-107543	12	1	10	300	54.23
280-107545	15	1	5	300	76.20
280-107547	18	1	5	300	139.45
280-107548	20	1	5	300	187.25

Fabricated Fittings Product
PVC Low Head PIP Fabricated Fittings, Risers & Accessories



Caps

Part Number	Size	Std Pk	Mstr Ctn	Prod Code	MSRP
-------------	------	--------	----------	-----------	------

Surface Reducer

Socket



Glue-On Saddles

Part Number	Size	Std Pk	Mstr Ctn	Prod Code	MSRP
-------------	------	--------	----------	-----------	------

Saddle

Socket



280-102013	6X2	1	10	300	20.64
280-102015	6X3	1	10	300	20.64
280-102016	6X4	1	10	300	20.64
280-102018	8X2	1	10	300	28.37
280-102020	8X3	1	10	300	28.37
280-102021	8X4	1	10	300	28.37
280-102022	8X6	1	10	300	28.37
280-102024	10X2	1	10	300	56.78
280-102026	10X3	1	10	300	56.78
280-102027	10X4	1	10	300	56.78
280-102028	10X6	1	10	300	56.78
280-102029	10X8	1	10	300	56.78
280-102031	12X2	1	10	300	69.73
280-102033	12X3	1	10	300	69.73
280-102034	12X4	1	10	300	69.73
280-102035	12X6	1	10	300	69.73
280-102036	12X8	1	10	300	69.73
280-102037	12X10	1	10	300	69.73
280-102048	15X2	1	5	300	98.11
280-102050	15X3	1	5	300	98.11
280-102051	15X4	1	5	300	98.11
280-102052	15X6	1	5	300	98.11
280-102053	15X8	1	5	300	98.11
280-102054	15X10	1	5	300	98.11
280-102055	15X12	1	5	300	98.11
280-102067	18X2	1	5	300	147.21
280-102069	18X3	1	4	300	147.21
280-102070	18X4	1	5	300	147.21
280-102071	18X6	1	5	300	147.21
280-102072	18X8	1	5	300	147.21
280-102073	18X10	1	5	300	147.21
280-102074	18X12	1	5	300	147.21
280-102075	18X15	1	5	300	147.21
280-102077	20X2	1	5	300	195.01
280-102136	20X3	1	5	300	195.01
280-102137	20X4	1	5	300	195.01
280-102138	20X6	1	5	300	195.01
280-102139	20X8	1	5	300	195.01
280-102140	20X10	1	5	300	195.01
280-102141	20X12	1	5	300	195.01
280-102142	20X15	1	5	300	195.01
280-102143	20X18	1	5	300	195.01

280-101788	4X2	1	40	300	20.64
280-101789	6X2	1	10	300	20.64
280-101790	8X2	1	10	300	20.64
280-101791	10X2	1	10	300	20.64
280-101792	12X2	1	10	300	20.64
280-101793	15X2	1	10	300	20.64
280-101794	18X2	1	20	300	20.64
280-101795	20X2	1	10	300	21.93
280-101796	4X3	1	5	300	21.93
280-101797	6X3	1	10	300	21.93
280-101798	8X3	1	10	300	21.93
280-101799	10X3	1	10	300	21.93
280-101800	12X3	1	10	300	21.93
280-101801	15X3	1	10	300	21.93
280-101802	18X3	1	20	300	21.93
280-101803	20X3	1	10	300	32.55
280-101804	6X4	1	10	300	24.55
280-101805	8X4	1	10	300	24.55
280-101806	10X4	1	12	300	24.55
280-101807	12X4	1	10	300	24.55
280-101808	15X4	1	10	300	24.55
280-101809	18X4	1	10	300	24.55
280-101810	20X4	1	8	300	24.55
280-101811	8X6	1	8	300	30.99
280-101812	10X6	1	8	300	30.99
280-101813	12X6	1	8	300	30.99
280-101814	15X6	1	8	300	30.99
280-101815	18X6	1	10	300	30.99
280-101816	20X6	1	7	300	34.89
280-101817	10X8	1	8	300	36.16
280-101818	12X8	1	8	300	36.16
280-101819	15X8	1	8	300	36.16
280-101820	18X8	1	8	300	40.01
280-101821	20X8	1	8	300	56.78
280-101822	12X10	1	10	300	43.93
280-101823	15X10	1	10	300	50.34
280-101824	18X10	1	10	300	51.63
280-101825	20X10	1	7	300	95.53
280-101826	15X12	1	0	300	67.15
280-101827	18X12	1	3	300	86.48
280-101828	20X12	1	0	300	104.57
280-101829	18X15	1	0	300	112.33
280-101830	20X15	1	0	300	143.33
280-101831	20X18	1	0	300	158.82



Fabricated Fittings Product

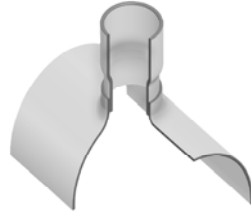
PVC Low Head PIP Fabricated Fittings, Risers & Accessories

Glue-On Saddles

Part Number	Size	Std Pk	Mstr Ctn	Prod Code	MSRP
-------------	------	--------	----------	-----------	------

Stub Saddle

Socket

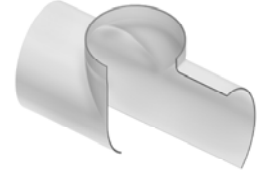


280-101883	4X2	1	10	300	25.74
280-101884	6X2	1	10	300	25.74
280-101885	8X2	1	10	300	25.74
280-101886	10X2	1	10	300	25.74
280-101887	12X2	1	10	300	27.11
280-101888	15X2	1	10	300	29.71
280-101889	18X2	1	10	300	29.71
280-101890	20X2	1	10	300	33.56
280-101891	4X3	1	10	300	30.99
280-101892	6X3	1	5	300	30.99
280-101893	8X3	1	5	300	30.99
280-101894	10X3	1	5	300	30.99
280-101895	12X3	1	5	300	33.56
280-101896	15X3	1	5	300	33.56
280-101897	18X3	1	10	300	33.56
280-101898	20X3	1	5	300	36.16
280-101899	6X4	1	10	300	36.16
280-101900	8X4	1	10	300	36.16
280-101901	10X4	1	10	300	36.16
280-101902	12X4	1	10	300	36.16
280-101903	15X4	1	10	300	36.16
280-101904	18X4	1	10	300	37.99
280-101905	20X4	1	10	300	38.73
280-101906	8X6	1	6	300	42.59
280-101907	10X6	1	8	300	42.59
280-101908	12X6	1	6	300	42.59
280-101909	15X6	1	8	300	45.18
280-101910	18X6	1	10	300	45.18
280-101911	20X6	1	7	300	51.63
280-101912	10X8	1	4	300	56.78
280-101913	12X8	1	3	300	56.78
280-101914	15X8	1	5	300	60.64
280-101915	18X8	1	5	300	64.56
280-101916	20X8	1	0	300	81.34
280-101917	12X10	1	3	300	74.89
280-101918	15X10	1	5	300	78.78
280-101919	18X10	1	4	300	80.09
280-101920	20X10	1	0	300	123.93
280-101921	15X12	1	0	300	112.33
280-101922	18X12	1	0	300	130.43
280-101923	20X12	1	0	300	148.52
280-101924	18X15	1	0	300	175.63
280-101925	20X15	1	0	300	207.91
280-101926	20X18	1	0	300	253.11

Part Number	Size	Std Pk	Mstr Ctn	Prod Code	MSRP
-------------	------	--------	----------	-----------	------

Same Size Saddle

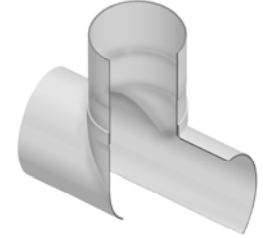
Socket



280-101937	6X6	1	10	300	35.48
280-101938	8X8	1	5	300	51.63
280-101939	10X10	1	5	300	70.98
280-101940	12X12	1	4	300	103.31
280-101941	15X15	1	0	300	154.93
280-101942	18X18	1	0	300	264.76
280-101943	20X20	1	0	300	361.61

Same Size Stub Saddle

Socket

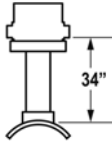


280-101949	6X6	1	5	300	61.95
280-101950	8X8	1	4	300	99.17
280-101951	10X10	1	0	300	121.35
280-101952	12X12	1	0	300	138.15
280-101953	15X15	1	0	300	206.65
280-101954	18X18	1	0	300	359.03
280-101955	20X20	1	0	300	419.71



Distributing Gate Riser
(Saddle x Riser x Pot)

Gates Not Included In MSRP
(See CHART #1 on Next Page)



Size	Prod Code	Part Number
6x4x8	301	2884-53234
8x4x8	301	2884-58234
8x6x10	301	2884-58534
10x4x8	301	2884-62434
10x6x10	301	2884-62634
10x8x12	301	2884-62834
12x4x8	301	2884-66434
12x6x10	301	2884-66634
12x8x12	301	2884-66834
12x10x15	301	2884-67034
15x4x8	301	2884-72334
15x6x10	301	2884-72634
15x8x12	301	2884-72834
15x10x15	301	2884-73034
15x12x18	301	2884-73234
18x4x8	301	2884-78434
18x6x10	301	2884-78634
18x8x12	301	2884-78834
18x10x15	301	2884-79034
18x12x18	301	2884-79234
20x4x8	301	2884-81434
20x6x10	301	2884-81634
20x8x12	301	2884-81834
20x10x15	301	2884-82034
20x12x18	301	2884-82234

HOW TO ORDER A DISTRIBUTING GATE RISER

Choose the Distributing Gate Riser size required:

Example: 6 x 4 x 8
(6" Saddle x 4" Riser x 8" Pot)
Part Number 2884-53234

Next, choose the Gate size required from CHART #1:

Example: 2-1/2" Gates
(Code Number "2")

Next, add this Code Number to the end of the Part Number:

Example: 2884-53234 2

Next, choose the position required for the gates from CHART #2:

Example: Standard 2-Way Gates
(Code Number "05")

Next, add this Code Number to the very end of the Part Number:

Example: 2884-532342 05

The Part Number is now complete for a
6" Saddle x 4" Riser x 8" Pot
with 2-1/2" Standard 2-Way Gates –

2884-53234205

HOW TO CALCULATE A DISTRIBUTING GATE RISER TOTAL MSRP-1 EACH WITH GATES INSTALLED

Find the base unit part number & price in MSRP-1:

Next, find the part number & price in MSRP-1 for the size of Gate required from CHART #1:

Next, multiply the Gate price by the number of Gates required:

Next, add this amount to the base unit price from MSRP-1 (See Chart 2 "Number of Outlets"), for the Total Price Each:



Fabricated Fittings Product
PVC Low Head PIP Fabricated Fittings, Risers & Accessories

CHART #1

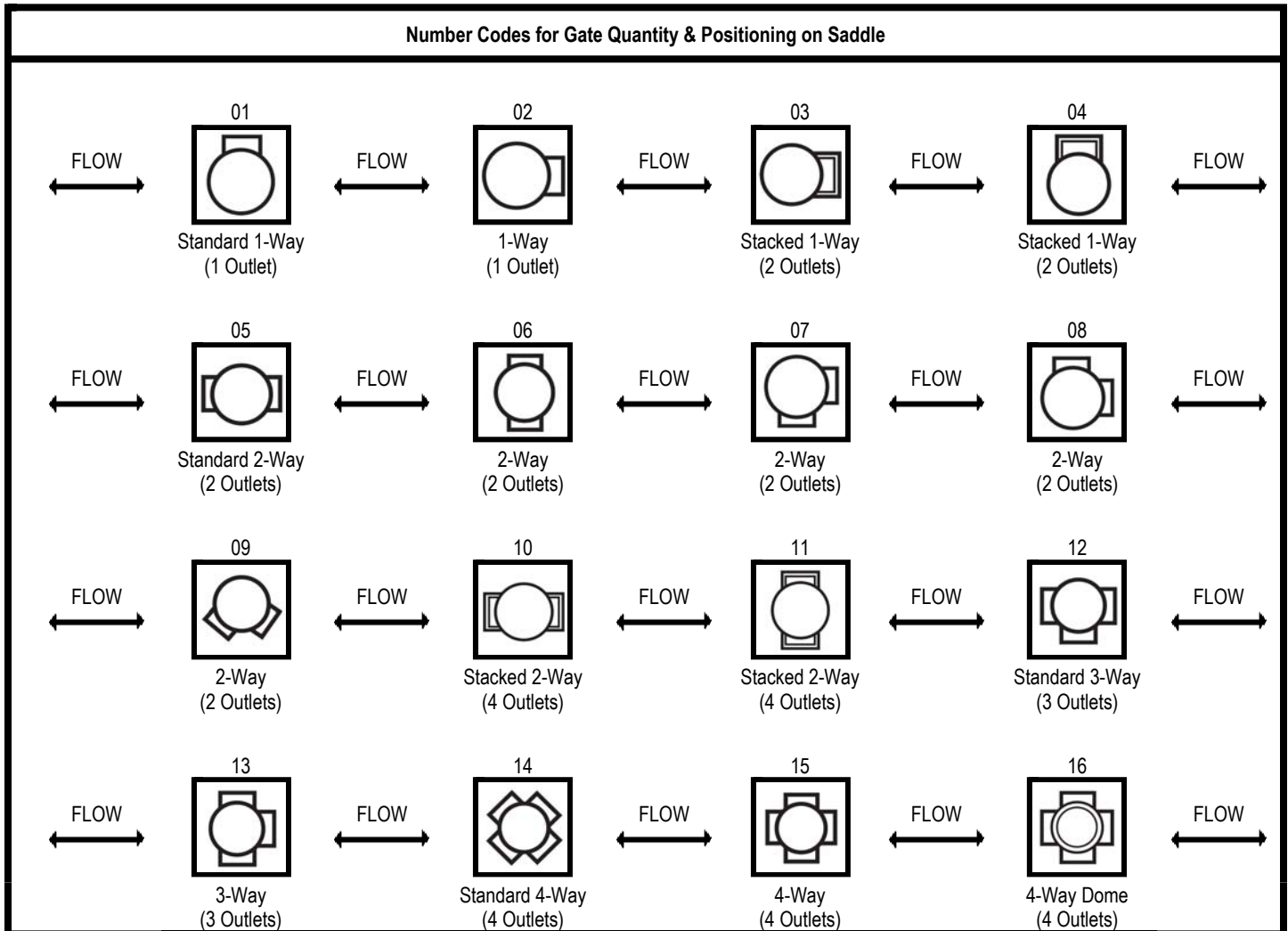
Part Number	Gate/Hole Size	Distributing Gate Size Code	Prod Code
280-108443	2" Gate	1	301
280-108444	2- 1/2" Gate	2	301
280-108445	3" Gate	3	301
280-108446	4" Gate	4	301

* Hole Size Codes **MUST** be chosen **ONLY** when ordering with **NO GATES INSTALLED**.

Number code for Gate Hole positioning must also be chosen from **CHART #2** below.

CHART #2

Number Codes for Gate Quantity & Positioning on Saddle





Distributing Gate Repair Unit (Riser x Pot)			
Gates Not Included In MSRP (See CHART #3 on Next Page)			
	Size	Prod Code	Part Number
	4x8	301	28840-42715__ _ _
	6x10	301	28840-53715__ _ _
	8x12	301	28840-59115__ _ _
	10x15	301	28840-63515__ _ _
	12x18	301	28840-67815__ _ _

HOW TO ORDER DISTRIBUTING GATE REPAIR UNIT

Choose the Repair Unit size required:
 Example: 4 x 8 Distributing Gate Repair Unit
 (4" Riser x 8" Pot
 Part Number 28840-42715__ _ _
Next, choose the Gate size required from CHART #3:
 Example: 2" Gate
 (Code Number "1")
Next, add this Code Number to the end of the Part Number:
 Example: 28840-42715_1__ _
Next, choose the position required for the gates from CHART #4:
 Example: 4-Way
 (Code Number "14")
Next, add this Code Number to the very end of the Part Number:
 Example: 28840-427151_1_4
The Part Number is now complete for a
4" Riser x 8" Pot Distributing Gate Riser Repair Unit with 2" 4-Way Gates –

28840-42715114

**HOW TO CALCULATE DISTRIBUTING GATE REPAIR UNIT
 TOTAL MSRP EACH WITH GATES INSTALLED**

Find the base unit part number & price in MSRP-1:
Next, find the part number & price in MSRP-1 for the size of Gate required from CHART #3:
Next, multiply the Gate price by the number of Gates required:
Next, add this amount to the base unit price from MSRP-1, (See Chart 4 "Number of Outlets"), for the total Price Each:



Fabricated Fittings Product
PVC Low Head PIP Fabricated Fittings, Risers & Accessories

CHART #3





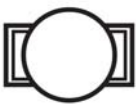



Gate/Hole Size	Gate Size Code	Prod Code
2" Gate	1	301
2- 1/2" Gate	2	301
3" Gate	3	301
4" Gate	4	301
2" Hole*	5	301
2- 1/2" Hole*	6	301
3" Hole*	7	301
4" Hole*	8	301

* Hole Size Codes MUST be chosen ONLY when ordering with NO GATES INSTALLED.

Number code for Gate Hole positioning must also be chosen from CHART #4 below.

NOTE: 3" Rite Flo Gates can be installed on 6" Risers ONLY.

CHART #4

Repair Unit Number Codes for Gate Quantity & Positioning			
02  1-Way (1 Outlet)	04  Stacked 1-Way (2 Outlets)	06  2-Way (2 Outlets)	08  2-Way (2 Outlets)
10  Stacked 2-Way (4 Outlets)	12  3-Way (3 Outlets)	14  4-Way (4 Outlets)	16  4-Way Dome (4 Outlets)

All Low Head PIP Fabricated Fittings showing size outlets of 4" and under are IPS size on that outlet