

Fabricated Fittings Product
PVC Schedule 40 & 80 DWV Fabricated Fittings



Caps

Size	SCH 40 DWV Prod Code: 390	SCH 80 DWV Prod Code: 400
	Part Number MSRP	Part Number MSRP

CAP (Socket) (continued)

	18	3747-180 374.56	3947-180 818.72
	20	3747-200 659.77	3947-200 946.09
	24	3747-240 975.25	3947-240 1097.80

Plugs

Size	SCH 40 DWV Prod Code: 390	SCH 80 DWV Prod Code: 400
	Part Number MSRP	Part Number MSRP

SPIGOT PLUG (Spigot)

	6	3749-060 47.60	3949-060 143.97
	8	3749-080 121.59	3949-080 242.99
	10	3749-100 138.66	3949-100 307.21
	12	3749-120 198.75	3949-120 489.15
	14	3749-140 337.20	---
	16	3749-160 410.88	3949-160 711.54

Cleanouts

Size	SCH 40 DWV Prod Code: 390	SCH 80 DWV Prod Code: 400
	Part Number MSRP	Part Number MSRP

Cleanout Adapter W/Plug (Spigot x Cleanout)

SOLD AS SET ONLY (Non-Pressure Rated)

	2	---	3978-020 101.72
	3	---	3978-030 130.32
	4	---	3978-040 163.77
	5	---	3978-050 174.08
	6	---	3978-060 184.42
	8	---	3978-080 293.36
	10	---	3978-100` 489.93
	12	---	3978-120` 684.02
	14	---	3978-140` 848.24
	16	---	3978-160 1668.37

Size	SCH 40 DWV Prod Code: 390	SCH 80 DWV Prod Code: 400
	Part Number MSRP	Part Number MSRP

Cleanout Adapter W/Plug (Spigot x Cleanout) (continued)

	18	---	3978-180 1997.74
	20	---	3978-200 2113.35
	24	---	3978-240 2454.96

Cleanouts Have HDPE Plug

Glue-On Saddles

Part Number	Size	Std Pk	Mstr Ctn	Prod Code	MSRP
-------------	------	-----------	-------------	--------------	------

Saddle

IPS O.D.x Socket Schedule 40



Non Pressure Rated

3763-528	6X2	1	10	390	37.72
3763-530	6X3	1	10	390	38.61
3763-532	6X4	1	8	390	40.16
3763-578	8X2	1	10	390	55.59
3763-580	8X3	1	10	390	56.14
3763-582	8X4	1	10	390	56.82
3763-585	8X6	1	10	390	58.43
3763-621	10X2	1	5	390	70.25
3763-623	10X3	1	10	390	71.23
3763-624	10X4	1	8	390	71.53
3763-626	10X6	1	5	390	83.71
3763-628	10X8	1	5	390	134.33
3763-661	12X2	1	5	390	83.08
3763-663	12X3	1	10	390	84.62
3763-664	12X4	1	10	390	86.43
3763-666	12X6	1	4	390	100.23
3763-668	12X8	1	5	390	159.79
3763-670	12X10	1	4	390	231.06
3763-691	14X2	1	10	390	106.48
3763-693	14X3	1	8	390	113.80
3763-694	14X4	1	5	390	121.56
3763-696	14X6	1	8	390	124.00
3763-698	14X8	1	4	390	190.28
3763-700	14X10	1	3	390	244.78
3763-702	14X12	1	0	390	269.81
3763-751	16X2	1	10	390	113.33
3763-753	16X3	1	5	390	114.88
3763-754	16X4	1	10	390	125.05
3763-756	16X6	1	3	390	133.62
3763-758	16X8	1	3	390	198.60
3763-760	16X10	1	0	390	252.42
3763-762	16X12	1	0	390	279.74
3763-764	16X14	1	0	390	290.79
3763-781	18X2	1	10	390	166.13
3763-783	18X3	1	5	390	169.36
3763-784	18X4	1	5	390	171.95
3763-786	18X6	1	4	390	183.08



Fabricated Fittings Product
PVC Schedule 40 & 80 DWV Fabricated Fittings

Glue-On Saddles

Part Number	Size	Std Pk	Mstr Ctn	Prod Code	MSRP
Saddle (continued)					
IPS O.D.x Socket Schedule 40					
3763-788	18X8	1	0	390	267.15
3763-790	18X10	1	0	390	296.15
3763-792	18X12	1	0	390	304.33
3763-794	18X14	1	0	390	459.76
3763-796	18X16	1	0	390	600.19
3763-811	20X2	1	12	390	166.52
3763-813	20X3	1	5	390	168.80
3763-814	20X4	1	6	390	177.04
3763-816	20X6	1	0	390	184.91
3763-818	20X8	1	5	390	266.80
3763-820	20X10	1	0	390	296.16
3763-822	20X12	1	0	390	422.23
3763-824	20X14	1	0	390	460.71
3763-826	20X16	1	0	390	602.39
3763-828	20X18	1	0	390	682.69
3763-901	24X2	1	5	390	158.85
3763-903	24X3	1	5	390	175.58
3763-904	24X4	1	5	390	177.53
3763-906	24X6	1	5	390	188.34
3763-908	24X8	1	5	390	269.27
3763-910	24X10	1	0	390	299.54
3763-912	24X12	1	0	390	423.73
3763-914	24X14	1	0	390	474.49
3763-916	24X16	1	0	390	533.27
3763-918	24X18	1	0	390	718.67
3763-920	24X20	1	0	390	804.66

Saddle



IPS O.D. x Socket Schedule 80

Non Pressure Rated

3963-528	6X2	1	6	400	63.39
3963-530	6X3	1	10	400	63.96
3963-532	6X4	1	8	400	64.51
3963-578	8X2	1	10	400	89.55
3963-580	8X3	1	8	400	90.64
3963-582	8X4	1	5	400	91.61
3963-585	8X6	1	5	400	93.75
3963-621	10X2	1	8	400	82.92
3963-623	10X3	1	5	400	84.08
3963-624	10X4	1	8	400	84.44
3963-626	10X6	1	5	400	98.19
3963-628	10X8	1	5	400	157.36
3963-661	12X2	1	10	400	97.96
3963-663	12X3	1	8	400	98.54
3963-664	12X4	1	10	400	99.37
3963-666	12X6	1	5	400	115.24
3963-668	12X8	1	2	400	181.35
3963-670	12X10	1	4	400	221.96
3963-691	14X2	1	10	400	120.64

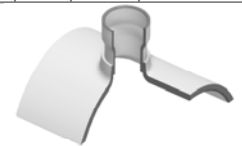
Part Number	Size	Std Pk	Mstr Ctn	Prod Code	MSRP
-------------	------	--------	----------	-----------	------

Saddle (continued)

IPS O.D. x Socket Schedule 80

3963-693	14X3	1	8	400	121.77
3963-694	14X4	1	5	400	122.36
3963-696	14X6	1	8	400	139.28
3963-698	14X8	1	4	400	213.53
3963-700	14X10	1	3	400	273.44
3963-702	14X12	1	4	400	301.93
3963-751	16X2	1	10	400	127.04
3963-753	16X3	1	8	400	128.15
3963-754	16X4	1	10	400	128.87
3963-756	16X6	1	8	400	146.88
3963-758	16X8	1	3	400	219.03
3963-760	16X10	1	0	400	278.91
3963-762	16X12	1	0	400	309.77
3963-764	16X14	1	0	400	322.80
3963-781	18X2	1	10	400	186.64
3963-783	18X3	1	4	400	187.77
3963-784	18X4	1	5	400	188.62
3963-786	18X6	1	5	400	199.63
3963-788	18X8	1	5	400	293.32
3963-790	18X10	1	0	400	325.17
3963-792	18X12	1	0	400	463.74
3963-794	18X14	1	0	400	504.72
3963-796	18X16	1	0	400	660.43
3963-811	20X2	1	12	400	188.77
3963-813	20X3	1	4	400	189.21
3963-814	20X4	1	6	400	191.48
3963-816	20X6	1	0	400	200.86
3963-818	20X8	1	5	400	290.15
3963-820	20X10	1	0	400	321.77
3963-822	20X12	1	0	400	458.97
3963-824	20X14	1	0	400	500.57
3963-826	20X16	1	0	400	655.83
3963-828	20X18	1	0	400	744.66
3963-901	24X2	1	5	400	192.07
3963-903	24X3	1	5	400	193.09
3963-904	24X4	1	5	400	193.98
3963-906	24X6	1	5	400	202.41
3963-908	24X8	1	5	409	287.56
3963-910	24X10	1	5	400	323.16
3963-912	24X12	1	0	409	451.25
3963-914	24X14	1	0	400	498.82
3963-916	24X16	1	0	400	682.75
3963-918	24X18	1	0	400	769.91
3963-920	24X20	1	0	400	866.53

Stub Saddle



IPS O.D. x Socket Schedule 40

Non Pressure Rated

3765-528	6X2	1	8	390	40.56
3765-530	6X3	1	4	390	41.52
3765-532	6X4	1	10	390	43.19
3765-578	8X2	1	10	390	59.78

Fabricated Fittings Product
PVC Schedule 40 & 80 DWV Fabricated Fittings



Glue-On Saddles

Part Number	Size	Std Pk	Mstr Ctn	Prod Code	MSRP
Stub Saddle (continued)					
IPS O.D x Socket Schedule 40					
3765-580	8X3	1	4	390	60.36
3765-582	8X4	1	8	390	61.09
3765-585	8X6	1	4	390	62.83
3765-621	10X2	1	5	390	75.53
3765-623	10X3	1	5	390	76.60
3765-624	10X4	1	4	390	97.07
3765-626	10X6	1	2	390	90.01
3765-628	10X8	1	2	390	144.43
3765-661	12X2	1	6	390	89.33
3765-663	12X3	1	5	390	90.99
3765-664	12X4	1	2	390	92.93
3765-666	12X6	1	2	390	107.71
3765-668	12X8	1	2	390	171.82
3765-670	12X10	1	2	390	248.45
3765-691	14X2	1	10	390	114.49
3765-693	14X3	1	2	390	115.79
3765-694	14X4	1	5	390	117.24
3765-696	14X6	1	3	390	133.34
3765-698	14X8	1	0	390	203.27
3765-700	14X10	1	0	390	263.20
3765-702	14X12	1	0	390	290.13
3765-751	16X2	1	4	390	121.85
3765-753	16X3	1	5	390	123.53
3765-754	16X4	1	5	390	125.40
3765-756	16X6	1	2	390	143.66
3765-758	16X8	1	0	390	213.55
3765-760	16X10	1	0	390	271.42
3765-762	16X12	1	0	390	300.79
3765-764	16X14	1	0	390	312.67
3765-781	18X2	1	4	390	178.61
3765-783	18X3	1	10	390	140.47
3765-784	18X4	1	10	390	184.88
3765-786	18X6	1	2	390	196.86
3765-788	18X8	1	0	390	287.24
3765-790	18X10	1	0	390	318.43
3765-792	18X12	1	0	390	327.22
3765-794	18X14	1	0	390	494.35
3765-796	18X16	1	0	390	644.82
3765-811	20X2	1	0	390	179.04
3765-813	20X3	1	2	390	181.51
3765-814	20X4	1	2	390	190.37
3765-816	20X6	1	0	390	198.83
3765-818	20X8	1	0	390	286.88
3765-820	20X10	1	0	390	318.44
3765-822	20X12	1	0	390	454.03
3765-824	20X14	1	0	390	495.39
3765-826	20X16	1	0	390	647.73
3765-828	20X18	1	0	390	734.08
3765-901	24X2	1	5	390	170.79
3765-903	24X3	1	2	390	188.78
3765-904	24X4	1	4	390	190.89

Part Number	Size	Std Pk	Mstr Ctn	Prod Code	MSRP
-------------	------	--------	----------	-----------	------

Stub Saddle (continued)

IPS O.D x Socket Schedule 40

3765-906	24X6	1	3	390	202.52
3765-908	24X8	1	0	390	289.54
3765-910	24X10	1	0	390	322.06
3765-912	24X12	1	0	390	455.61
3765-914	24X14	1	0	390	510.22
3765-916	24X16	1	0	390	573.42
3765-918	24X18	1	0	390	772.75
3765-920	24X20	1	0	390	865.23

Stub Saddle

IPS O.D.x Socket Schedule 80



Non Pressure Rated

3965-528	6X2	1	8	400	68.17
3965-530	6X3	1	3	400	68.76
3965-532	6X4	1	10	400	69.38
3965-578	8X2	1	5	409	95.28
3965-580	8X3	1	4	400	97.46
3965-582	8X4	1	6	400	98.51
3965-585	8X6	1	4	400	100.81
3965-621	10X2	1	6	400	89.17
3965-623	10X3	1	6	409	89.47
3965-624	10X4	1	4	400	90.80
3965-626	10X6	1	4	400	105.57
3965-628	10X8	1	2	400	169.20
3965-661	12X2	1	4	400	105.33
3965-663	12X3	1	4	400	106.45
3965-664	12X4	1	2	400	106.85
3965-666	12X6	1	2	400	123.93
3965-668	12X8	1	2	400	195.00
3965-670	12X10	1	2	400	286.05
3965-691	14X2	1	6	400	129.74
3965-693	14X3	1	4	400	130.95
3965-694	14X4	1	5	400	131.56
3965-696	14X6	1	2	400	149.76
3965-700	14X10	1	0	400	294.03
3965-702	14X12	1	0	400	324.64
3965-751	16X2	1	5	400	136.60
3965-753	16X3	1	4	400	137.78
3965-754	16X4	1	3	400	138.56
3965-756	16X6	1	2	400	157.93
3965-758	16X8	1	3	400	235.53
3965-760	16X10	1	3	400	299.92
3965-762	16X12	1	0	400	333.08
3965-764	16X14	1	0	400	347.12
3965-781	18X2	1	2	400	200.67
3965-783	18X3	1	0	400	201.89
3965-784	18X4	1	0	400	202.81
3965-786	18X6	1	2	400	214.66
3965-788	18X8	1	0	400	315.39
3965-790	18X10	1	0	400	349.64
3965-792	18X12	1	0	400	498.64
3965-794	18X14	1	0	400	542.72



Fabricated Fittings Product
PVC Schedule 40 & 80 DWV Fabricated Fittings

Glue-On Saddles

Part Number	Size	Std Pk	Mstr Ctn	Prod Code	MSRP
-------------	------	--------	----------	-----------	------

Stub Saddle (continued)

IPS O.D.x Socket Schedule 80

3965-796	18X16	1	0	400	710.14
3965-811	20X2	1	4	400	202.97
3965-813	20X3	1	2	400	203.44
3965-814	20X4	1	4	400	205.88
3965-816	20X6	1	0	400	215.97
3965-818	20X8	1	0	400	311.99
3965-820	20X10	1	0	400	345.99
3965-822	20X12	1	0	400	493.52
3965-824	20X14	1	0	400	538.24
3965-826	20X16	1	0	400	705.22
3965-828	20X18	1	0	400	800.72
3965-901	24X2	1	5	400	206.53
3965-903	24X3	1	2	400	207.62
3965-904	24X4	1	5	400	208.58
3965-906	24X6	1	3	400	217.66
3965-908	24X8	1	0	400	312.48
3965-910	24X10	1	0	400	347.49
3965-912	24X12	1	0	409	485.24
3965-914	24X14	1	0	400	536.37
3965-916	24X16	1	0	400	734.14
3965-918	24X18	1	0	400	827.85
3965-920	24X20	1	0	400	931.75