

Fabricated Fittings Product

**PVC Class 63, 100, 125, 160 & 200 IPS Fabricated Fittings & Molded Class 125**



Size	CLASS 63	CLASS 100	CLASS 125	CLASS 160	CLASS 200
	Prod Code: 340 Part Number MSRP	Prod Code: 350 Part Number MSRP	Prod Code: 360 Part Number MSRP	Prod Code: 370 Part Number MSRP	Prod Code: 380 Part Number MSRP

**Repair Coupling (Gasket x Gasket)**

	4	---	3228-040 <b>74.51</b>	3328-040 <b>79.74</b>	3428-040 <b>105.31</b>	3528-040 <b>127.75</b>
	6	---	3228-060 <b>104.38</b>	3328-060 <b>107.93</b>	3428-060 <b>134.68</b>	3528-060 <b>156.00</b>
	8	---	3228-080 <b>159.27</b>	3328-080 <b>165.63</b>	3428-080 <b>192.81</b>	3528-080 <b>210.15</b>
	10	---	3228-100 <b>227.39</b>	3328-100 <b>246.60</b>	3428-100 <b>303.64</b>	3528-100 <b>337.08</b>
	12	---	3228-120 <b>304.64</b>	3328-120 <b>330.03</b>	3428-120 <b>395.35</b>	3528-120 <b>470.78</b>
	14	---	3228-140 <b>437.51</b>	3328-140 <b>460.34</b>	3428-140 <b>499.66</b>	---
	16	---	3228-160 <b>576.88</b>	3328-160 <b>655.33</b>	3428-160 <b>710.81</b>	---

**Cross (Socket x Socket x Socket x Socket)**

	4X2	---	320-103280 <b>61.32</b>	330-103280 <b>92.01</b>	---	---
	4X3	---	320-103281 <b>67.43</b>	330-103281 <b>95.08</b>	---	---
	6	310-103286 <b>101.80</b>	320-103286 <b>176.66</b>	330-103286 <b>199.98</b>	340-103286 <b>412.42</b>	350-103286 <b>452.82</b>
	6X2	310-103283 <b>69.94</b>	320-103283 <b>76.07</b>	330-103283 <b>101.80</b>	340-103283 <b>302.31</b>	350-103283 <b>304.76</b>
	6X3	310-103284 <b>79.74</b>	320-103284 <b>95.67</b>	330-103284 <b>127.63</b>	340-103284 <b>314.53</b>	350-103284 <b>320.63</b>
	6X4	310-103285 <b>85.88</b>	320-103285 <b>107.93</b>	330-103285 <b>145.95</b>	340-103285 <b>339.01</b>	350-103285 <b>363.51</b>
	8	310-103291 <b>132.46</b>	320-103291 <b>229.46</b>	330-103291 <b>278.51</b>	340-103291 <b>621.72</b>	350-103291 <b>664.58</b>
	8X2	310-103287 <b>89.54</b>	320-103287 <b>114.08</b>	330-103287 <b>127.63</b>	340-103287 <b>387.99</b>	350-103287 <b>393.92</b>
	8X3	310-103288 <b>95.67</b>	320-103288 <b>127.63</b>	330-103288 <b>139.82</b>	340-103288 <b>400.19</b>	350-103288 <b>443.04</b>
	8X4	310-103289 <b>109.18</b>	320-103289 <b>145.95</b>	330-103289 <b>168.04</b>	340-103289 <b>428.34</b>	350-103289 <b>467.49</b>
	8X6	310-103290 <b>120.21</b>	320-103290 <b>177.91</b>	330-103290 <b>211.02</b>	340-103290 <b>499.36</b>	350-103290 <b>536.06</b>
	10	310-103297 <b>214.71</b>	320-103297 <b>342.28</b>	330-103297 <b>480.94</b>	340-103297 <b>1028.06</b>	350-103297 <b>1096.24</b>
	10X2	310-103292 <b>109.18</b>	320-103292 <b>158.22</b>	330-103292 <b>187.71</b>	340-103292 <b>600.92</b>	350-103292 <b>652.37</b>
	10X3	310-103293 <b>120.21</b>	320-103293 <b>179.11</b>	330-103293 <b>225.72</b>	340-103293 <b>609.48</b>	350-103293 <b>668.21</b>
	10X4	310-103294 <b>132.46</b>	320-103294 <b>199.98</b>	330-103294 <b>255.19</b>	340-103294 <b>662.09</b>	350-103294 <b>701.28</b>
	10X6	310-103295 <b>147.21</b>	320-103295 <b>222.06</b>	330-103295 <b>296.91</b>	340-103295 <b>739.22</b>	350-103295 <b>782.07</b>
	10X8	310-103296 <b>168.04</b>	320-103296 <b>272.37</b>	330-103296 <b>369.31</b>	340-103296 <b>831.03</b>	350-103296 <b>889.76</b>
	12	310-103304 <b>334.94</b>	320-103304 <b>527.55</b>	330-103304 <b>776.63</b>	340-103304 <b>1522.52</b>	350-103304 <b>1759.94</b>
	12X2	310-103298 <b>155.83</b>	320-103298 <b>208.57</b>	330-103298 <b>304.25</b>	340-103298 <b>763.74</b>	350-103298 <b>769.80</b>
12X3	310-103299 <b>170.49</b>	320-103299 <b>240.46</b>	330-103299 <b>316.54</b>	340-103299 <b>804.24</b>	350-103299 <b>845.86</b>	

Made in the U.S.A.

Suitable for Oil-Free air handling to 25 psi, not for distribution of compressed air or gas

Effective 06/26/2017 See MSRP-1 Sheet or Check Spears® On-line Catalog @ www.spearsmfg.com for Pricing

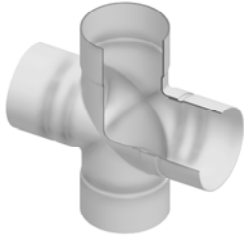


Fabricated Fittings Product

**PVC Class 63, 100, 125, 160 & 200 IPS Fabricated Fittings & Molded Class 125**

Size	CLASS 63	CLASS 100	CLASS 125	CLASS 160	CLASS 200
	Prod Code: 340 Part Number MSRP	Prod Code: 350 Part Number MSRP	Prod Code: 360 Part Number MSRP	Prod Code: 370 Part Number MSRP	Prod Code: 380 Part Number MSRP

**Cross (Socket x Socket x Socket x Socket) (continued)**



12X4	310-103300 181.56	320-103300 287.54	330-103300 354.56	340-103300 908.09	350-103300 922.81
12X6	310-103301 191.36	320-103301 299.35	330-103301 407.33	340-103301 997.45	350-103301 1015.83
12X8	310-103302 220.83	320-103302 349.65	330-103302 478.51	340-103302 1113.71	350-103302 1138.25
12X10	310-103303 263.74	320-103303 434.29	330-103303 607.32	340-103303 1276.47	350-103303 1323.00
15	310-103321 <sup>1</sup> 569.29	---	---	---	---
15X2	310-103313 <sup>2</sup> 245.36	---	---	---	---
15X3	310-103314 <sup>2</sup> 276.07	---	---	---	---
15X4	310-103315 <sup>2</sup> 304.25	---	---	---	---
15X6	310-103316 <sup>2</sup> 348.45	---	---	---	---
15X8	310-103317 <sup>2</sup> 380.33	---	---	---	---
15X10	310-103318 <sup>2</sup> 412.22	---	---	---	---
15X12	310-103319 <sup>2</sup> 456.43	---	---	---	---

<sup>1</sup> 15" PIP O.D.

<sup>2</sup> 15" PIP O.D. x IPS

**Cross (Gasket x Gasket x Gasket x Gasket)**



4	---	320-103997 214.71	330-103997 233.12	340-103997 291.41	350-103997 314.73
6	---	320-104001 250.26	330-104001 314.06	340-104001 523.79	350-104001 664.58
6X4	---	320-104000 226.98	330-104000 288.31	340-104000 412.42	350-104000 517.67
8	---	320-104006 409.80	330-104006 468.69	340-104006 812.67	350-104006 1009.73
8X4	---	320-104004 306.72	330-104004 355.78	340-104004 562.93	350-104004 676.80
8X6	---	320-104005 368.04	330-104005 404.84	340-104005 675.58	350-104005 788.17
10	---	320-104012 615.93	330-104012 814.72	340-104012 1353.61	350-104012 1507.81
10X4	---	320-104009 429.41	330-104009 521.44	340-104009 731.86	350-104009 873.87
10X6	---	320-104010 490.74	330-104010 539.84	340-104010 895.88	350-104010 997.45
10X8	---	320-104011 552.13	330-104011 705.49	340-104011 1101.51	350-104011 1138.25
12	---	320-104019 835.53	330-104019 1143.54	340-104019 1885.99	350-104019 2123.42
12X4	---	320-104015 613.46	330-104015 674.82	340-104015 1073.31	350-104015 1231.21
12X6	---	320-104016 674.82	330-104016 711.61	340-104016 1230.69	350-104016 1313.22
12X8	---	320-104017 736.15	330-104017 834.32	340-104017 1389.06	350-104017 1419.71


Fabricated Fittings Product

PVC Class 63, 100, 125, 160 & 200 IPS Fabricated Fittings & Molded Class 125



Size	CLASS 63	CLASS 100	CLASS 125	CLASS 160	CLASS 200
	Prod Code: 340 Part Number MSRP	Prod Code: 350 Part Number MSRP	Prod Code: 360 Part Number MSRP	Prod Code: 370 Part Number MSRP	Prod Code: 380 Part Number MSRP

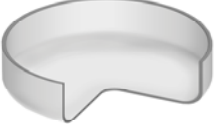
Cross (Gasket x Gasket x Gasket x Gasket) (continued)

	12X10	---	320-104018 785.25	330-104018 1006.08	340-104018 1627.78	350-104018 1662.04
--	-------	-----	----------------------	-----------------------	-----------------------	-----------------------

Surface Reducer (Socket)

	6X2	310-102013 34.34	---	330-102013 49.05	---	---
	6X3	310-102015 34.34	---	330-102015 49.05	---	---
	6X4	310-102016 34.34	---	330-102016 139.07	---	---
	8X2	310-102018 46.56	---	330-102018 98.16	---	---
	8X3	310-102020 46.56	---	330-102020 98.16	---	---
	8X4	310-102021 46.56	---	330-102021 98.16	---	---
	8X6	310-102022 46.56	---	330-102022 159.51	---	---
	10X2	310-102024 74.81	---	330-102024 153.36	---	---
	10X3	310-102026 74.81	---	330-102026 153.36	---	---
	10X4	310-102027 74.81	---	330-102027 153.36	---	---
	10X6	310-102028 74.81	---	330-102028 153.36	---	---
	10X8	310-102029 74.81	---	330-102029 153.36	---	---
	12X2	310-102031 92.01	---	330-102031 276.07	---	---
	12X3	310-102033 92.01	---	330-102033 276.07	---	---
	12X4	310-102034 92.01	---	330-102034 276.07	---	---
	12X6	310-102035 92.01	---	330-102035 276.07	---	---
12X8	310-102036 92.01	---	330-102036 276.07	---	---	
12X10	310-102037 92.01	---	330-102037 276.07	---	---	

Cap (Socket)

	6	310-107540 23.32	---	330-107540 45.38	---	---
	8	310-107541 42.92	---	330-107541 58.87	---	---
	10	310-107542 73.61	---	330-107542 94.47	---	---