



Fabricated Fittings Product

**PVC Class 63, 100, 125, 160 & 200 IPS Fabricated Fittings & Molded Class 125**

# **PVC Class 63, 100, 125, 160 & 200 IPS Fabricated Fittings & Molded Class 125**



## **PRODUCT**

**Contact Spears® for any Information not found.**

Fabricated Fittings Product

**PVC Class 63, 100, 125, 160 & 200 IPS Fabricated Fittings & Molded Class 125**



Size	CLASS 63	CLASS 100	CLASS 125	CLASS 160	CLASS 200
	Prod Code: 340 Part Number MSRP	Prod Code: 350 Part Number MSRP	Prod Code: 360 Part Number MSRP	Prod Code: 370 Part Number MSRP	Prod Code: 380 Part Number MSRP

**Tee (Gasket x Spigot x Fipt)**

	4X1-1/2	---	---	---	340-102356 <b>209.96</b>	350-102356 <b>244.73</b>
	4X2	---	---	---	340-102357 <b>209.96</b>	350-102357 <b>244.73</b>
	4X2-1/2	---	---	---	340-102358 <b>224.18</b>	350-102358 <b>260.20</b>
	4X3	---	---	---	340-102359 <b>224.18</b>	---
	6X1-1/2	---	---	---	340-102361 <b>305.35</b>	350-102361 <b>318.22</b>
	6X2	---	---	---	340-102362 <b>305.35</b>	350-102362 <b>318.22</b>
	6X2-1/2	---	---	---	340-102363 <b>324.68</b>	350-102363 <b>332.38</b>
	6X3	---	---	---	340-102364 <b>324.68</b>	350-102364 <b>332.38</b>
	6X4	---	---	---	340-102365 <b>337.51</b>	350-102365 <b>350.40</b>
	8X1-1/2	---	---	---	340-102366 <b>372.31</b>	350-102366 <b>453.47</b>
	8X2	---	---	---	340-102367 <b>372.31</b>	350-102367 <b>453.47</b>
	8X2-1/2	---	---	---	340-102368 <b>391.63</b>	350-102368 <b>472.79</b>
	8X3	---	---	---	340-102369 <b>391.63</b>	350-102369 <b>472.79</b>
	8X4	---	---	---	340-102370 <b>423.84</b>	350-102370 <b>492.09</b>
	10X2	---	---	---	340-102372 <b>632.55</b>	350-102372 <b>690.53</b>
	10X2-1/2	---	---	---	340-102373 <b>671.21</b>	---
	10X3	---	---	---	340-102374 <b>671.21</b>	350-102374 <b>724.02</b>
	10X4	---	---	---	340-102375 <b>705.96</b>	350-102375 <b>761.41</b>
	12X2	---	---	---	340-102377 <b>842.55</b>	350-102377 <b>906.95</b>
	12X2-1/2	---	---	---	340-102378 <b>878.61</b>	---
12X3	---	---	---	340-102379 <b>878.61</b>	350-102379 <b>955.88</b>	
12X4	---	---	---	340-102380 <b>919.86</b>	350-102380 <b>1004.88</b>	

**Tee (Gasket x Gasket x Fipt)**

	4X1-1/2	---	---	---	340-102426 <b>231.88</b>	350-102426 <b>253.81</b>
	4X2	---	---	---	340-102427 <b>231.88</b>	350-102427 <b>253.81</b>
	4X2-1/2	---	---	---	340-102428 <b>252.47</b>	350-102428 <b>273.11</b>
	4X3	---	---	---	340-102429 <b>252.47</b>	350-102429 <b>273.11</b>
	6X1-1/2	---	---	---	340-102431 <b>333.65</b>	350-102431 <b>350.40</b>

Made in the U.S.A.

Suitable for Oil-Free air handling to 25 psi, not for distribution of compressed air or gas

Effective 10/01/2018 See MSRP-1 Sheet or Check Spears® On-line Catalog @ [www.spearsmfg.com](http://www.spearsmfg.com) for Pricing

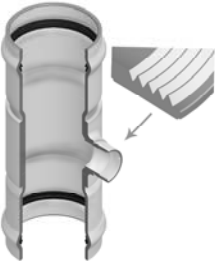


Fabricated Fittings Product

**PVC Class 63, 100, 125, 160 & 200 IPS Fabricated Fittings & Molded Class 125**

Size	CLASS 63	CLASS 100	CLASS 125	CLASS 160	CLASS 200
	Prod Code: 340 Part Number MSRP	Prod Code: 350 Part Number MSRP	Prod Code: 360 Part Number MSRP	Prod Code: 370 Part Number MSRP	Prod Code: 380 Part Number MSRP

**Tee (Gasket x Gasket x Fipt) (continued)**

	6X2	---	---	---	340-102432 <b>333.65</b>	350-102432 <b>350.40</b>
	6X2-1/2	---	---	---	340-102433 <b>346.55</b>	350-102433 <b>367.19</b>
	6X3	---	---	---	340-102434 <b>346.55</b>	350-102434 <b>367.19</b>
	6X4	---	---	---	340-102435 <b>356.85</b>	350-102435 <b>382.64</b>
	8X1-1/2	---	---	---	340-102436 <b>408.41</b>	350-102436 <b>489.55</b>
	8X2	---	---	---	340-102437 <b>408.41</b>	350-102437 <b>489.55</b>
	8X2-1/2	---	---	---	340-102438 <b>432.86</b>	350-102438 <b>515.31</b>
	8X3	---	---	---	340-102439 <b>432.86</b>	350-102439 <b>515.31</b>
	8X4	---	---	---	340-102440 <b>459.92</b>	350-102440 <b>710.47</b>
	10X2	---	---	---	340-102442 <b>691.80</b>	350-102442 <b>761.41</b>
	10X2-1/2	---	---	---	340-102443 <b>724.02</b>	350-102443 <b>803.94</b>
	10X3	---	---	---	340-102444 <b>724.02</b>	350-102444 <b>803.94</b>
	10X4	---	---	---	340-102445 <b>763.93</b>	350-102445 <b>836.07</b>
	12X2	---	---	---	340-102447 <b>892.41</b>	350-102447 <b>971.38</b>
	12X2-1/2	---	---	---	340-102448 <b>936.59</b>	---
	12X3	---	---	---	340-102449 <b>936.59</b>	350-102449 <b>1020.34</b>
12X4	---	---	---	340-102450 <b>984.23</b>	350-102450 <b>1069.29</b>	

**Tee (Socket x Socket x Socket)**

	6	310-102502 <b>80.07</b>	320-102502 <b>161.43</b>	330-102502 <b>179.46</b>	340-102502 <b>316.44</b>	350-102502 <b>334.87</b>
	6X2	310-102499 <b>63.24</b>	320-102499 <b>83.94</b>	330-102499 <b>100.71</b>	340-102499 <b>251.18</b>	350-102499 <b>260.88</b>
	6X3	310-102500 <b>67.15</b>	320-102500 <b>94.25</b>	330-102500 <b>107.16</b>	340-102500 <b>267.25</b>	350-102500 <b>273.86</b>
	6X4	310-102501 <b>73.62</b>	320-102501 <b>103.33</b>	330-102501 <b>120.08</b>	340-102501 <b>276.94</b>	350-102501 <b>293.20</b>
	8	310-102507 <b>134.35</b>	320-102507 <b>204.04</b>	330-102507 <b>241.54</b>	340-102507 <b>496.02</b>	350-102507 <b>590.06</b>
	8X2	310-102503 <b>87.81</b>	320-102503 <b>111.06</b>	330-102503 <b>120.08</b>	340-102503 <b>319.51</b>	350-102503 <b>353.00</b>
	8X3	310-102504 <b>94.25</b>	320-102504 <b>123.95</b>	330-102504 <b>134.35</b>	340-102504 <b>358.15</b>	350-102504 <b>382.64</b>
	8X4	310-102505 <b>100.71</b>	320-102505 <b>140.72</b>	330-102505 <b>153.63</b>	340-102505 <b>378.76</b>	350-102505 <b>401.95</b>
	8X6	310-102506 <b>120.08</b>	320-102506 <b>180.81</b>	330-102506 <b>191.12</b>	340-102506 <b>439.32</b>	350-102506 <b>476.65</b>
	10	310-102513 <b>200.16</b>	320-102513 <b>284.07</b>	330-102513 <b>392.60</b>	340-102513 <b>770.38</b>	350-102513 <b>936.59</b>

Fabricated Fittings Product

PVC Class 63, 100, 125, 160 & 200 IPS Fabricated Fittings & Molded Class 125



Size	CLASS 63	CLASS 100	CLASS 125	CLASS 160	CLASS 200
	Prod Code: 340 Part Number MSRP	Prod Code: 350 Part Number MSRP	Prod Code: 360 Part Number MSRP	Prod Code: 370 Part Number MSRP	Prod Code: 380 Part Number MSRP

Tee (Socket x Socket x Socket) (continued)

	10X2	310-102508 120.08	320-102508 147.18	330-102508 188.54	340-102508 452.21	350-102508 538.48
	10X3	310-102509 140.72	320-102509 170.45	330-102509 222.13	340-102509 485.72	350-102509 573.26
	10X4	310-102510 160.16	320-102510 191.12	330-102510 250.52	340-102510 525.64	350-102510 615.79
	10X6	310-102511 174.35	320-102511 210.51	330-102511 277.62	340-102511 578.44	350-102511 677.62
	10X8	310-102512 185.96	320-102512 244.07	330-102512 330.59	340-102512 651.88	350-102512 761.41
	12	310-102520 275.06	320-102520 448.14	330-102520 588.88	340-102520 1096.37	350-102520 1448.02
	12X2	310-102514 206.67	320-102514 222.13	330-102514 290.60	340-102514 597.74	350-102514 709.86
	12X3	310-102515 213.06	320-102515 235.04	330-102515 315.11	340-102515 637.73	350-102515 765.24
	12X4	310-102516 220.85	320-102516 262.16	330-102516 348.71	340-102516 681.52	350-102516 816.72
	12X6	310-102517 227.28	320-102517 299.61	330-102517 392.60	340-102517 757.54	350-102517 926.27
	12X8	310-102518 240.22	320-102518 330.59	330-102518 441.72	340-102518 843.82	350-102518 988.13
	12X10	310-102519 246.62	320-102519 395.19	330-102519 524.31	340-102519 943.03	350-102519 1156.88
	15X2	310-102521 <sup>2</sup> 245.39	---	---	---	---
	15X3	310-102522 <sup>2</sup> 258.27	---	---	---	---
	15X4	310-102523 <sup>2</sup> 286.71	---	---	---	---
	15X6	310-102524 <sup>2</sup> 293.17	---	---	---	---
	15X8	310-102525 <sup>2</sup> 315.11	---	---	---	---
	15X10	310-102526 <sup>2</sup> 330.59	---	---	---	---
	15X12	310-102527 <sup>2</sup> 373.22	---	---	---	---
	15X15	310-102528 <sup>1</sup> 475.25	---	---	---	---

<sup>1</sup> 15" PIP O.D.

<sup>2</sup> 15" PIP O.D. x IPS

Tee (Gasket x Spigot x Gasket)

	4	---	320-103058 129.13	330-103058 134.35	340-103058 245.39	350-103058 275.32
	6	---	320-103062 187.27	330-103062 200.16	340-103062 380.03	350-103062 437.99
	6X4	---	320-103061 160.16	330-103061 193.69	340-103061 337.51	350-103061 363.28
	8	---	320-103067 258.86	330-103067 333.20	340-103067 564.27	350-103067 709.86
	8X4	---	320-103065 202.05	330-103065 220.85	340-103065 421.25	350-103065 512.75
	8X6	---	320-103066 235.04	330-103066 278.97	340-103066 466.36	350-103066 583.59

Made in the U.S.A.

Suitable for Oil-Free air handling to 25 psi, not for distribution of compressed air or gas

Effective 10/01/2018 See MSRP-1 Sheet or Check Spears® On-line Catalog @ www.spearsmfg.com for Pricing



Fabricated Fittings Product


**PVC Class 63, 100, 125, 160 & 200 IPS Fabricated Fittings & Molded Class 125**

Size	CLASS 63	CLASS 100	CLASS 125	CLASS160	CLASS 200
	Prod Code: 340 Part Number MSRP	Prod Code: 350 Part Number MSRP	Prod Code: 360 Part Number MSRP	Prod Code: 370 Part Number MSRP	Prod Code: 380 Part Number MSRP

**Tee (Gasket x Spigot x Gasket) (continued)**

	10	---	320-103073 439.11	330-103073 533.39	340-103073 923.73	350-103073 1165.61
	10X4	---	320-103070 302.19	330-103070 386.12	340-103070 619.69	350-103070 778.13
	10X6	---	320-103071 333.20	330-103071 419.75	340-103071 677.62	350-103071 848.98
	10X8	---	320-103072 370.66	330-103072 466.22	340-103072 761.41	350-103072 958.49
	12	---	320-103080 614.74	330-103080 733.55	---	---
	12X4	---	320-103076 408.12	330-103076 499.85	340-103076 810.32	350-103076 1017.72
	12X6	---	320-103077 435.22	330-103077 506.25	340-103077 891.51	350-103077 1120.83
	12X8	---	320-103078 481.71	330-103078 533.39	340-103078 988.13	350-103078 1230.32
	12X10	---	320-103079 548.88	330-103079 599.25	340-103079 1118.25	350-103079 1392.63
	12X12	---	---	---	340-103080 1311.43	---

**Tee (Gasket x Gasket x Gasket)**

	4	---	320-103170 154.96	330-103170 211.73	340-103170 243.51	350-103170 301.46
	6	---	320-103174 180.81	330-103174 240.22	340-103174 405.81	350-103174 440.57
	6X4	---	320-103173 160.16	330-103173 227.28	340-103173 350.40	350-103173 376.17
	8	---	320-103179 320.26	330-103179 346.55	340-103179 632.55	350-103179 745.92
	8X4	---	320-103177 240.22	330-103177 267.33	340-103177 496.02	350-103177 551.36
	8X6	---	320-103178 246.62	330-103178 302.19	340-103178 551.36	350-103178 609.40
	10	---	320-103185 466.22	330-103185 586.31	340-103185 1037.07	350-103185 1217.46
	10X4	---	320-103182 357.74	330-103182 444.26	340-103182 778.13	350-103182 793.57
	10X6	---	320-103183 383.58	330-103183 463.62	340-103183 825.80	350-103183 861.91
	10X8	---	320-103184 417.14	330-103184 539.85	340-103184 923.73	350-103184 971.38
	12	---	320-103192 648.35	330-103192 848.49	340-103192 1441.62	350-103192 1683.82
	12X4	---	320-103188 457.15	330-103188 539.85	340-103188 988.13	350-103188 1033.21
	12X6	---	320-103189 468.83	330-103189 555.32	340-103189 1079.58	350-103189 1142.73
	12X8	---	320-103190 493.36	330-103190 666.43	340-103190 1182.89	350-103190 1249.63
	12X10	---	320-103191 586.31	330-103191 710.34	340-103191 1328.27	350-103191 1414.54

Fabricated Fittings Product

PVC Class 63, 100, 125, 160 & 200 IPS Fabricated Fittings & Molded Class 125



	Size	CLASS 63	CLASS 100	CLASS 125	CLASS 160	CLASS 200
		Prod Code: 340 Part Number MSRP	Prod Code: 350 Part Number MSRP	Prod Code: 360 Part Number MSRP	Prod Code: 370 Part Number MSRP	Prod Code: 380 Part Number MSRP

Reinforced Tee (Socket x Socket x Fipt)

	6X2	---	---	330-202152 90.40	---	---
	6X3	---	---	330-202154 103.33	---	---
	6X4	---	---	330-202155 117.48	---	---
	8X2	---	---	330-202157 130.43	---	---
	8X3	---	---	330-202159 152.38	---	---
	8X4	---	---	330-202160 166.55	---	---
	10X2	---	---	330-202162 201.43	---	---
	10X3	---	---	330-202164 235.04	---	---
	10X4	---	---	330-202165 256.98	---	---
	12X2	---	---	330-202167 290.60	---	---
	12X3	---	---	330-202169 324.18	---	---
	12X4	---	---	330-202170 357.74	---	---

Reinforced Tee (Socket x Spigot x Fipt)

	6X2	---	---	330-202222 90.40	---	---
	6X3	---	---	330-202224 103.33	---	---
	6X4	---	---	330-202225 117.48	---	---
	8X2	---	---	330-202227 129.13	---	---
	8X3	---	---	330-202229 144.58	---	---
	8X4	---	---	330-202230 158.80	---	---
	10X2	---	---	330-202232 191.12	---	---
	10X3	---	---	330-202234 223.39	---	---
	10X4	---	---	330-202235 246.62	---	---
	12X2	---	---	330-202237 276.36	---	---
	12X3	---	---	330-202239 308.66	---	---
	12X4	---	---	330-202240 343.55	---	---



Fabricated Fittings Product

**PVC Class 63, 100, 125, 160 & 200 IPS Fabricated Fittings & Molded Class 125**

Size	CLASS 63	CLASS 100	CLASS 125	CLASS 160	CLASS 200
	Prod Code: 340 Part Number MSRP	Prod Code: 350 Part Number MSRP	Prod Code: 360 Part Number MSRP	Prod Code: 370 Part Number MSRP	Prod Code: 380 Part Number MSRP

**Reinforced Tee (Gasket x Spigot x Fipt)**

	6X2	---	---	330-202362 <b>154.96</b>	---	---
	6X3	---	---	330-202364 <b>176.88</b>	---	---
	6X4	---	---	330-202365 <b>187.27</b>	---	---
	8X2	---	---	330-202367 <b>193.69</b>	---	---
	8X3	---	---	330-202369 <b>206.67</b>	---	---
	8X4	---	---	330-202370 <b>220.85</b>	---	---
	10X2	---	---	330-202372 <b>293.17</b>	---	---
	10X3	---	---	330-202374 <b>316.40</b>	---	---
	10X4	---	---	330-202375 <b>347.40</b>	---	---
	12X2	---	---	330-202377 <b>400.35</b>	---	---
	12X3	---	---	330-202379 <b>433.92</b>	---	---
	12X4	---	---	330-202380 <b>466.22</b>	---	---

**Reinforced Tee (Gasket x Gasket x Fipt)**

	6X2	---	---	330-202432 <b>187.27</b>	---	---
	6X3	---	---	330-202434 <b>200.16</b>	---	---
	6X4	---	---	330-202435 <b>213.06</b>	---	---
	8X2	---	---	330-202437 <b>233.75</b>	---	---
	8X3	---	---	330-202439 <b>246.62</b>	---	---
	8X4	---	---	330-202440 <b>267.33</b>	---	---
	10X2	---	---	330-202442 <b>364.20</b>	---	---
	10X3	---	---	330-202444 <b>383.58</b>	---	---
	10X4	---	---	330-202445 <b>423.59</b>	---	---
	12X2	---	---	330-202447 <b>493.36</b>	---	---
	12X3	---	---	330-202449 <b>539.85</b>	---	---
	12X4	---	---	330-202450 <b>564.43</b>	---	---

**90° Elbow (Socket x Socket)**

	6	310-100812 <b>87.81</b>	320-100812 <b>113.61</b>	330-100812 <b>126.54</b>	340-100812 <b>325.93</b>	350-100812 <b>353.00</b>
	8	310-100813 <b>120.08</b>	320-100813 <b>174.35</b>	330-100813 <b>207.88</b>	340-100813 <b>452.21</b>	350-100813 <b>512.75</b>

Fabricated Fittings Product

PVC Class 63, 100, 125, 160 & 200 IPS Fabricated Fittings & Molded Class 125



	Size	CLASS 63	CLASS 100	CLASS 125	CLASS 160	CLASS 200
		Prod Code: 340 Part Number MSRP	Prod Code: 350 Part Number MSRP	Prod Code: 360 Part Number MSRP	Prod Code: 370 Part Number MSRP	Prod Code: 380 Part Number MSRP

90° Elbow (Socket x Socket) (continued)

	10	310-100814 187.27	320-100814 272.49	330-100814 329.32	340-100814 687.96	350-100814 845.11
	12	310-100815 267.33	320-100815 379.65	330-100815 503.69	340-100815 997.13	350-100815 1133.72
	15	310-100816 <sup>1</sup> 499.85	---	---	---	---

<sup>1</sup> 15" PIP O.D.

90° Elbow (Gasket x Spigot)

	4	---	---	330-100877 196.13	---	---
	6	---	320-100878 229.89	330-100878 264.76	340-100878 431.55	350-100878 453.47
	8	---	320-100879 348.71	330-100879 427.51	340-100879 615.79	350-100879 660.91
	10	---	320-100880 507.56	330-100880 672.83	340-100880 891.51	350-100880 1088.59
	12	---	320-100881 680.62	330-100881 802.03	340-100881 1198.16	350-100881 1377.19

90° Elbow (Gasket x Gasket)

	4	---	---	330-100899 196.13	340-100899 292.43	350-100899 324.68
	6	---	320-100900 229.89	330-100900 264.76	340-100900 431.55	350-100900 453.47
	8	---	320-100901 348.71	330-100901 427.51	340-100901 615.79	350-100901 660.91
	10	---	320-100902 507.56	330-100902 672.83	340-100902 891.51	350-100902 1088.59
	12	---	320-100903 680.62	330-100903 802.03	3406-1202 997.93	350-100903 1377.19

11-1/4° Elbow (Socket x Socket)

	4	---	---	330-100113 37.41	340-100113 41.42	350-100113 49.68
	6	310-100114 33.52	320-100114 43.93	330-100114 52.92	340-100114 57.96	350-100114 61.82
	8	310-100115 52.92	320-100115 67.15	330-100115 104.57	340-100115 100.47	350-100115 113.36
	10	310-100116 74.87	320-100116 107.16	330-100116 148.52	340-100116 173.94	350-100116 233.13
	12	310-100117 121.34	320-100117 167.91	330-100117 241.54	340-100117 273.11	350-100117 389.08
	15	310-100118 204.04	---	---	---	---

11-1/4° Elbow (Gasket x Spigot)

	4	---	---	330-100185 134.35	340-100185 149.08	350-100185 183.45
	6	---	320-100186 149.80	330-100186 187.27	340-100186 207.06	350-100186 226.74
	8	---	320-100187 183.39	330-100187 280.25	340-100187 303.66	350-100187 365.87
	10	---	320-100188 313.85	330-100188 373.22	340-100188 431.55	350-100188 635.09
	12	---	320-100189 419.75	330-100189 506.25	340-100189 628.69	350-100189 874.77





Fabricated Fittings Product

**PVC Class 63, 100, 125, 160 & 200 IPS Fabricated Fittings & Molded Class 125**

	Size	CLASS 63	CLASS 100	CLASS 125	CLASS 160	CLASS 200
		Prod Code: 340 Part Number MSRP	Prod Code: 350 Part Number MSRP	Prod Code: 360 Part Number MSRP	Prod Code: 370 Part Number MSRP	Prod Code: 380 Part Number MSRP

**11-1/4° Elbow (Gasket x Gasket)**

	4	---	---	330-100209 <b>134.35</b>	340-100209 <b>149.08</b>	350-100209 <b>183.45</b>
	6	---	320-100210 <b>149.80</b>	330-100210 <b>187.27</b>	340-100210 <b>207.06</b>	350-100210 <b>226.74</b>
	8	---	320-100211 <b>183.39</b>	330-100211 <b>280.25</b>	340-100211 <b>303.66</b>	350-100211 <b>365.87</b>
	10	---	320-100212 <b>313.85</b>	330-100212 <b>373.22</b>	340-100212 <b>431.55</b>	350-100212 <b>635.09</b>
	12	---	320-100213 <b>419.75</b>	330-100213 <b>506.25</b>	340-100213 <b>628.69</b>	350-100213 <b>874.77</b>

**15° Elbow (Socket x Socket)**

	4	---	---	330-100233 <b>37.41</b>	340-100233 <b>41.42</b>	350-100233 <b>49.68</b>
	6	310-100234 <b>33.52</b>	320-100234 <b>43.93</b>	330-100234 <b>52.92</b>	340-100234 <b>57.96</b>	350-100234 <b>61.82</b>
	8	310-100235 <b>52.92</b>	320-100235 <b>67.15</b>	330-100235 <b>81.32</b>	340-100235 <b>100.47</b>	350-100235 <b>115.59</b>
	10	310-100236 <b>74.87</b>	320-100236 <b>107.16</b>	330-100236 <b>148.52</b>	340-100236 <b>173.94</b>	350-100236 <b>233.13</b>
	12	310-100237 <b>121.34</b>	320-100237 <b>167.91</b>	330-100237 <b>241.54</b>	340-100237 <b>273.11</b>	350-100237 <b>389.08</b>
	15	310-100238 <sup>1</sup> <b>204.04</b>	---	---	---	---

<sup>1</sup> 15" PIP O.D.

**15° Elbow (Gasket x Spigot)**

	4	---	---	330-100305 <b>134.35</b>	340-100305 <b>149.08</b>	350-100305 <b>183.45</b>
	6	---	320-100306 <b>149.80</b>	330-100306 <b>187.27</b>	340-100306 <b>207.06</b>	350-100306 <b>226.74</b>
	8	---	320-100307 <b>183.39</b>	330-100307 <b>280.25</b>	340-100307 <b>303.66</b>	350-100307 <b>365.87</b>
	10	---	320-100308 <b>313.85</b>	330-100308 <b>373.22</b>	340-100308 <b>431.55</b>	350-100308 <b>635.09</b>
	12	---	320-100309 <b>419.75</b>	330-100309 <b>506.25</b>	340-100309 <b>628.69</b>	350-100309 <b>874.77</b>

**15° Elbow (Gasket x Gasket)**

	4	---	---	330-100329 <b>134.35</b>	340-100329 <b>149.08</b>	350-100329 <b>183.45</b>
	6	---	320-100330 <b>149.80</b>	330-100330 <b>187.27</b>	340-100330 <b>207.06</b>	350-100330 <b>226.74</b>
	8	---	320-100331 <b>197.11</b>	330-100331 <b>280.25</b>	340-100331 <b>303.66</b>	350-100331 <b>365.87</b>
	10	---	320-100332 <b>292.24</b>	330-100332 <b>373.22</b>	340-100332 <b>431.55</b>	350-100332 <b>635.09</b>
	12	---	320-100333 <b>421.41</b>	330-100333 <b>506.25</b>	340-100333 <b>628.69</b>	350-100333 <b>874.77</b>

**22-1/2° Elbow (Socket x Socket)**

	4	---	---	330-100353 <b>37.41</b>	340-100353 <b>41.42</b>	350-100353 <b>49.68</b>
	6	310-100354 <b>33.52</b>	320-100354 <b>43.93</b>	330-100354 <b>52.92</b>	340-100354 <b>57.96</b>	350-100354 <b>61.82</b>
	8	310-100355 <b>52.92</b>	320-100355 <b>67.15</b>	330-100355 <b>81.32</b>	340-100355 <b>100.47</b>	350-100355 <b>115.59</b>

Fabricated Fittings Product

PVC Class 63, 100, 125, 160 & 200 IPS Fabricated Fittings & Molded Class 125



	Size	CLASS 63	CLASS 100	CLASS 125	CLASS 160	CLASS 200
		Prod Code: 340 Part Number MSRP	Prod Code: 350 Part Number MSRP	Prod Code: 360 Part Number MSRP	Prod Code: 370 Part Number MSRP	Prod Code: 380 Part Number MSRP

22-1/2° Elbow (Socket x Socket) (continued)

	10	310-100356 74.87	320-100356 107.16	330-100356 148.52	340-100356 173.94	350-100356 233.13
	12	310-100357 121.34	320-100357 167.91	330-100357 241.54	340-100357 273.11	350-100357 389.08
	15	310-100358 <sup>1</sup> 204.04	---	---	---	---

<sup>1</sup> 15" PIP O.D.

22-1/2° Elbow (Gasket x Spigot)

	4	---	---	330-100425 134.35	340-100425 149.08	350-100425 183.45
	6	---	320-100426 149.80	330-100426 187.27	340-100426 207.06	350-100426 226.74
	8	---	320-100427 183.39	330-100427 280.25	340-100427 303.66	350-100427 365.87
	10	---	320-100428 313.85	330-100428 373.22	340-100428 431.55	350-100428 635.09
	12	---	320-100429 419.75	330-100429 506.25	340-100429 628.69	350-100429 874.77

22-1/2° Elbow (Gasket x Gasket)

	4	---	---	330-100449 134.35	340-100449 149.08	350-100449 183.45
	6	---	320-100450 149.80	330-100450 187.27	340-100450 207.06	350-100450 226.74
	8	---	320-100451 183.39	330-100451 280.25	340-100451 303.66	350-100451 365.87
	10	---	320-100452 313.85	330-100452 373.22	340-100452 431.55	350-100452 635.09
	12	---	320-100453 419.75	330-100453 506.25	340-100453 628.69	350-100453 874.77

30° Elbow (Socket x Socket)

	4	---	---	330-100473 46.47	340-100473 97.85	350-100473 162.67
	6	310-100474 46.47	320-100474 58.13	330-100474 65.84	340-100474 239.62	350-100474 289.60
	8	310-100475 68.41	320-100475 96.85	330-100475 101.99	340-100475 325.93	350-100475 389.08
	10	310-100476 99.44	320-100476 148.52	330-100476 210.51	340-100476 505.02	350-100476 609.40
	12	310-100477 161.43	320-100477 216.96	330-100477 308.66	340-100477 731.75	350-100477 851.57
	15	310-100478 241.54	---	---	---	---

30° Elbow (Gasket x Spigot)

	4	---	---	330-100545 154.16	340-100545 185.51	350-100545 194.53
	6	---	320-100546 200.16	330-100546 213.06	340-100546 275.71	350-100546 337.51
	8	---	320-100547 246.62	330-100547 299.61	340-100547 405.81	350-100547 502.41
	10	---	320-100548 347.40	330-100548 440.36	340-100548 673.76	350-100548 838.73
	12	---	320-100549 480.45	330-100549 639.28	340-100549 891.51	350-100549 1052.56



Fabricated Fittings Product

**PVC Class 63, 100, 125, 160 & 200 IPS Fabricated Fittings & Molded Class 125**

	Size	CLASS 63	CLASS 100	CLASS 125	CLASS 160	CLASS 200
		Prod Code: 340 Part Number MSRP	Prod Code: 350 Part Number MSRP	Prod Code: 360 Part Number MSRP	Prod Code: 370 Part Number MSRP	Prod Code: 380 Part Number MSRP

**30° Elbow (Gasket x Gasket)**

	4	---	---	330-100569 <b>154.16</b>	340-100569 <b>185.51</b>	350-100569 <b>194.53</b>
	6	---	320-100570 <b>200.16</b>	330-100570 <b>213.06</b>	340-100570 <b>275.71</b>	350-100570 <b>337.51</b>
	8	---	320-100571 <b>246.62</b>	330-100571 <b>299.61</b>	340-100571 <b>405.81</b>	350-100571 <b>502.41</b>
	10	---	320-100572 <b>347.40</b>	330-100572 <b>440.36</b>	340-100572 <b>673.76</b>	350-100572 <b>838.73</b>
	12	---	320-100573 <b>480.45</b>	330-100573 <b>639.28</b>	340-100573 <b>891.51</b>	350-100573 <b>1052.56</b>

**45° Elbow (Socket x Socket)**

	6	310-100592 <b>46.47</b>	320-100592 <b>58.13</b>	330-100592 <b>65.84</b>	340-100592 <b>239.62</b>	350-100592 <b>249.91</b>
	8	310-100593 <b>68.41</b>	320-100593 <b>96.85</b>	330-100593 <b>101.99</b>	340-100593 <b>325.93</b>	350-100593 <b>389.08</b>
	10	310-100594 <b>99.44</b>	320-100594 <b>148.52</b>	330-100594 <b>210.51</b>	340-100594 <b>505.02</b>	350-100594 <b>609.40</b>
	12	310-100595 <b>161.43</b>	320-100595 <b>216.96</b>	330-100595 <b>308.66</b>	340-100595 <b>731.75</b>	350-100595 <b>851.57</b>
	15	310-100596 <sup>1</sup> <b>241.54</b>	---	---	---	---

<sup>1</sup> 15" PIP O.D.

**45° Elbow (Gasket x Spigot)**

	4	---	---	330-100657 <b>154.16</b>	340-100657 <b>185.51</b>	350-100657 <b>194.53</b>
	6	---	320-100658 <b>156.34</b>	330-100658 <b>213.06</b>	340-100658 <b>275.71</b>	350-100658 <b>337.51</b>
	8	---	320-100659 <b>221.57</b>	330-100659 <b>299.61</b>	340-100659 <b>405.81</b>	350-100659 <b>502.41</b>
	10	---	320-100660 <b>318.07</b>	330-100660 <b>440.36</b>	340-100660 <b>673.76</b>	350-100660 <b>836.71</b>
	12	---	320-100661 <b>452.67</b>	330-100661 <b>639.28</b>	340-100661 <b>891.51</b>	350-100661 <b>1052.56</b>

**45° Elbow (Gasket x Gasket)**

	4	---	---	330-100679 <b>154.16</b>	340-100679 <b>185.51</b>	350-100679 <b>194.53</b>
	6	---	320-100680 <b>156.34</b>	330-100680 <b>213.06</b>	340-100680 <b>275.71</b>	350-100680 <b>337.51</b>
	8	---	320-100681 <b>221.57</b>	330-100681 <b>299.61</b>	340-100681 <b>405.81</b>	350-100681 <b>502.41</b>
	10	---	320-100682 <b>318.07</b>	330-100682 <b>440.36</b>	340-100682 <b>673.76</b>	350-100682 <b>838.73</b>
	12	---	320-100683 <b>480.42</b>	330-100683 <b>639.28</b>	340-100683 <b>891.51</b>	350-100683 <b>1052.56</b>

**60° Elbow (Socket x Socket)**

	4	---	---	330-100701 <b>83.12</b>	---	---
	6	310-100702 <b>87.81</b>	320-100702 <b>113.61</b>	330-100702 <b>126.54</b>	340-100702 <b>325.93</b>	350-100702 <b>353.00</b>
	8	310-100703 <b>120.08</b>	320-100703 <b>174.35</b>	330-100703 <b>207.88</b>	340-100703 <b>452.21</b>	350-100703 <b>512.75</b>
	10	310-100704 <b>187.27</b>	320-100704 <b>272.49</b>	330-100704 <b>329.32</b>	340-100704 <b>687.96</b>	350-100704 <b>845.11</b>

Fabricated Fittings Product

**PVC Class 63, 100, 125, 160 & 200 IPS Fabricated Fittings & Molded Class 125**



	Size	CLASS 63	CLASS 100	CLASS 125	CLASS 160	CLASS 200
		Prod Code: 340 Part Number MSRP	Prod Code: 350 Part Number MSRP	Prod Code: 360 Part Number MSRP	Prod Code: 370 Part Number MSRP	Prod Code: 380 Part Number MSRP

**60° Elbow (Socket x Socket) (continued)**

	12	310-100705 267.33	320-100705 379.65	330-100705 503.69	340-100705 997.13	350-100705 1133.72
	15	310-100706 <sup>1</sup> 499.85	---	---	---	---

<sup>1</sup> 15" PIP O.D.

**60° Elbow (Gasket x Spigot)**

	4	---	---	330-100767 196.13	340-100767 292.43	350-100767 324.68
	6	---	320-100768 229.89	330-100768 264.76	340-100768 431.55	350-100768 453.47
	8	---	320-100769 348.71	330-100769 427.51	340-100769 615.79	350-100769 660.91
	10	---	320-100770 507.56	330-100770 672.83	340-100770 891.51	350-100770 1088.59
	12	---	320-100771 680.62	330-100771 802.03	340-100771 1198.16	350-100771 1377.19

**60° Elbow (Gasket x Gasket)**

	4	---	---	330-100789 196.13	340-100789 292.43	350-100789 324.68
	6	---	320-100790 229.89	330-100790 264.76	340-100790 431.55	350-100790 453.47
	8	---	320-100791 348.71	330-100791 427.51	340-100791 615.79	350-100791 660.91
	10	---	320-100792 507.56	330-100792 672.83	340-100792 891.51	350-100792 1088.59
	12	---	320-100793 680.62	330-100793 802.03	340-100793 1198.16	350-100793 1377.19

**Coupling (Socket x Socket)**

	6	310-100002 24.55	320-100002 29.66	330-100002 33.52	340-100002 39.92	350-100002 48.98
	8	310-100003 42.59	320-100003 51.63	330-100003 55.55	340-100003 73.47	350-100003 94.03
	10	310-100004 50.37	320-100004 85.23	330-100004 101.99	340-100004 116.65	350-100004 204.84
	12	310-100005 77.48	320-100005 133.00	330-100005 164.03	340-100005 186.81	350-100005 307.91
	15	310-100006 <sup>1</sup> 116.24	---	---	---	---

<sup>1</sup> 15" PIP O.D.

**Coupling (Gasket x Spigot)**

	4	---	320-100067 45.18	330-100067 58.13	340-100067 64.86	350-100067 78.54
	6	---	320-100068 70.98	330-100068 77.48	340-100068 104.37	350-100068 110.79
	8	---	320-100069 114.93	330-100069 139.43	340-100069 166.20	350-100069 185.51
	10	---	320-100070 152.38	330-100070 185.96	340-100070 243.51	350-100070 307.91
	12	---	320-100071 210.51	330-100071 253.12	340-100071 365.87	350-100071 488.26



Fabricated Fittings Product

**PVC Class 63, 100, 125, 160 & 200 IPS Fabricated Fittings & Molded Class 125**

	Size	CLASS 63	CLASS 100	CLASS 125	CLASS 160	CLASS 200
		Prod Code: 340 Part Number MSRP	Prod Code: 350 Part Number MSRP	Prod Code: 360 Part Number MSRP	Prod Code: 370 Part Number MSRP	Prod Code: 380 Part Number MSRP

**Coupling (Gasket x Gasket)**

	4	---	320-100089 <b>70.98</b>	330-100089 <b>83.94</b>	340-100089 <b>92.00</b>	350-100089 <b>101.20</b>
	6	---	320-100090 <b>107.16</b>	330-100090 <b>120.08</b>	340-100090 <b>126.19</b>	350-100090 <b>159.74</b>
	8	---	320-100091 <b>160.16</b>	330-100091 <b>174.35</b>	340-100091 <b>188.99</b>	350-100091 <b>211.28</b>
	10	---	320-100092 <b>227.28</b>	330-100092 <b>253.12</b>	340-100092 <b>305.35</b>	350-100092 <b>365.87</b>
	12	---	320-100093 <b>299.61</b>	330-100093 <b>347.40</b>	340-100093 <b>401.95</b>	350-100093 <b>544.92</b>

**Reducer Coupling (Socket x Socket)**

	6X4	310-100926 <b>33.52</b>	320-100926 <b>37.41</b>	330-100926 <b>42.59</b>	340-100926 <b>45.04</b>	350-100926 <b>56.67</b>
	8X6	310-100928 <b>43.93</b>	320-100928 <b>59.37</b>	330-100928 <b>65.84</b>	340-100928 <b>72.13</b>	350-100928 <b>78.54</b>
	10X8	310-100931 <b>61.97</b>	320-100931 <b>117.94</b>	330-100931 <b>105.88</b>	340-100931 <b>133.97</b>	350-100931 <b>159.74</b>
	12X10	310-100935 <b>108.51</b>	320-100935 <b>161.43</b>	330-100935 <b>201.43</b>	340-100935 <b>246.05</b>	350-100935 <b>262.81</b>
	15X12	310-100940 <sup>1</sup> <b>204.04</b>	---	---	---	---

<sup>1</sup> 15" PIP O.D. x IPS

**Reducer Coupling (Gasket x Spigot)**

	6X4	---	320-101310 <b>106.94</b>	330-101310 <b>126.54</b>	340-101310 <b>148.12</b>	350-101310 <b>163.60</b>
	8X6	---	320-101312 <b>153.63</b>	330-101312 <b>187.27</b>	340-101312 <b>230.57</b>	350-101312 <b>256.38</b>
	10X8	---	320-101315 <b>213.06</b>	330-101315 <b>253.12</b>	340-101315 <b>316.93</b>	350-101315 <b>360.71</b>
	12X10	---	320-101319 <b>302.19</b>	330-101319 <b>364.20</b>	340-101319 <b>512.75</b>	350-101319 <b>578.44</b>

**Reducer Coupling (Spigot x Gasket)**

	6X4	---	320-101383 <b>100.71</b>	330-101383 <b>113.61</b>	340-101383 <b>123.69</b>	350-101383 <b>141.68</b>
	8X6	---	320-101385 <b>134.35</b>	330-101385 <b>160.16</b>	340-101385 <b>204.84</b>	350-101385 <b>233.13</b>
	10X8	---	320-101388 <b>200.16</b>	330-101388 <b>246.62</b>	340-101388 <b>297.62</b>	350-101388 <b>350.40</b>
	12X10	---	320-101392 <b>299.61</b>	330-101392 <b>343.55</b>	340-101392 <b>483.11</b>	350-101392 <b>566.83</b>

**Reducer Coupling (Gasket x Gasket)**

	6X4	---	320-101456 <b>134.35</b>	330-101456 <b>147.18</b>	340-101456 <b>173.94</b>	350-101456 <b>190.65</b>
	8X6	---	320-101458 <b>193.69</b>	330-101458 <b>213.06</b>	340-101458 <b>279.54</b>	350-101458 <b>305.35</b>
	10X8	---	320-101461 <b>267.33</b>	330-101461 <b>333.20</b>	340-101461 <b>399.33</b>	350-101461 <b>583.59</b>
	12X10	---	320-101465 <b>370.66</b>	330-101465 <b>419.75</b>	340-101465 <b>530.23</b>	350-101465 <b>868.33</b>

Fabricated Fittings Product

**PVC Class 63, 100, 125, 160 & 200 IPS Fabricated Fittings & Molded Class 125**



Size	CLASS 63	CLASS 100	CLASS 125	CLASS 160	CLASS 200
	Prod Code: 340 Part Number MSRP	Prod Code: 350 Part Number MSRP	Prod Code: 360 Part Number MSRP	Prod Code: 370 Part Number MSRP	Prod Code: 380 Part Number MSRP

**Repair Coupling (Gasket x Gasket)**

	4	---	3228-040 <b>78.43</b>	3328-040 <b>83.94</b>	3428-040 <b>110.85</b>	3528-040 <b>134.47</b>
	6	---	3228-060 <b>109.87</b>	3328-060 <b>113.61</b>	3428-060 <b>141.77</b>	3528-060 <b>164.21</b>
	8	---	3228-080 <b>167.65</b>	3328-080 <b>174.35</b>	3428-080 <b>202.96</b>	3528-080 <b>221.21</b>
	10	---	3228-100 <b>239.36</b>	3328-100 <b>259.58</b>	3428-100 <b>319.62</b>	3528-100 <b>354.82</b>
	12	---	3228-120 <b>320.67</b>	3328-120 <b>347.40</b>	3428-120 <b>416.16</b>	3528-120 <b>495.56</b>
	14	---	3228-140 <b>460.54</b>	3328-140 <b>484.57</b>	3428-140 <b>525.96</b>	---
	16	---	3228-160 <b>607.24</b>	3328-160 <b>689.82</b>	3428-160 <b>748.22</b>	---

**Cross (Socket x Socket x Socket x Socket)**

	4X2	---	320-103280 <b>64.55</b>	330-103280 <b>96.85</b>	---	---
	4X3	---	320-103281 <b>70.98</b>	330-103281 <b>100.08</b>	---	---
	6	310-103286 <b>107.16</b>	320-103286 <b>185.96</b>	330-103286 <b>210.51</b>	340-103286 <b>434.13</b>	350-103286 <b>476.65</b>
	6X2	310-103283 <b>73.62</b>	320-103283 <b>80.07</b>	330-103283 <b>107.16</b>	340-103283 <b>318.22</b>	350-103283 <b>320.80</b>
	6X3	310-103284 <b>83.94</b>	320-103284 <b>100.71</b>	330-103284 <b>134.35</b>	340-103284 <b>331.08</b>	350-103284 <b>337.51</b>
	6X4	310-103285 <b>90.40</b>	320-103285 <b>113.61</b>	330-103285 <b>153.63</b>	340-103285 <b>356.85</b>	350-103285 <b>382.64</b>
	8	310-103291 <b>139.43</b>	320-103291 <b>241.54</b>	330-103291 <b>293.17</b>	340-103291 <b>654.44</b>	350-103291 <b>699.56</b>
	8X2	310-103287 <b>94.25</b>	320-103287 <b>120.08</b>	330-103287 <b>134.35</b>	340-103287 <b>408.41</b>	350-103287 <b>414.65</b>
	8X3	310-103288 <b>100.71</b>	320-103288 <b>134.35</b>	330-103288 <b>147.18</b>	340-103288 <b>421.25</b>	350-103288 <b>466.36</b>
	8X4	310-103289 <b>114.93</b>	320-103289 <b>153.63</b>	330-103289 <b>176.88</b>	340-103289 <b>450.88</b>	350-103289 <b>492.09</b>
	8X6	310-103290 <b>126.54</b>	320-103290 <b>187.27</b>	330-103290 <b>222.13</b>	340-103290 <b>525.64</b>	350-103290 <b>564.27</b>
	10	310-103297 <b>226.01</b>	320-103297 <b>360.29</b>	330-103297 <b>506.25</b>	340-103297 <b>1082.17</b>	350-103297 <b>1153.94</b>
	10X2	310-103292 <b>114.93</b>	320-103292 <b>166.55</b>	330-103292 <b>197.59</b>	340-103292 <b>632.55</b>	350-103292 <b>686.71</b>
	10X3	310-103293 <b>126.54</b>	320-103293 <b>188.54</b>	330-103293 <b>237.60</b>	340-103293 <b>641.56</b>	350-103293 <b>703.38</b>
	10X4	310-103294 <b>139.43</b>	320-103294 <b>210.51</b>	330-103294 <b>268.62</b>	340-103294 <b>696.94</b>	350-103294 <b>738.19</b>
	10X6	310-103295 <b>154.96</b>	320-103295 <b>233.75</b>	330-103295 <b>312.54</b>	340-103295 <b>778.13</b>	350-103295 <b>823.23</b>
	10X8	310-103296 <b>176.88</b>	320-103296 <b>286.71</b>	330-103296 <b>388.75</b>	340-103296 <b>874.77</b>	350-103296 <b>936.59</b>
	12	310-103304 <b>352.57</b>	320-103304 <b>555.32</b>	330-103304 <b>817.51</b>	340-103304 <b>1602.65</b>	350-103304 <b>1852.57</b>
	12X2	310-103298 <b>164.03</b>	320-103298 <b>219.55</b>	330-103298 <b>320.26</b>	340-103298 <b>803.94</b>	350-103298 <b>810.32</b>
12X3	310-103299 <b>179.46</b>	320-103299 <b>253.12</b>	330-103299 <b>333.20</b>	340-103299 <b>846.57</b>	350-103299 <b>890.38</b>	

Made in the U.S.A.

Suitable for Oil-Free air handling to 25 psi, not for distribution of compressed air or gas

Effective 10/01/2018 See MSRP-1 Sheet or Check Spears® On-line Catalog @ www.spearsmfg.com for Pricing

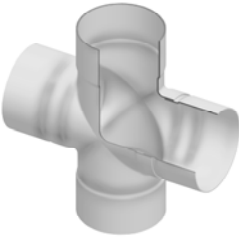


Fabricated Fittings Product

**PVC Class 63, 100, 125, 160 & 200 IPS Fabricated Fittings & Molded Class 125**

Size	CLASS 63	CLASS 100	CLASS 125	CLASS 160	CLASS 200
	Prod Code: 340 Part Number MSRP	Prod Code: 350 Part Number MSRP	Prod Code: 360 Part Number MSRP	Prod Code: 370 Part Number MSRP	Prod Code: 380 Part Number MSRP


**Cross (Socket x Socket x Socket x Socket) (continued)**

	12X4	310-103300 191.12	320-103300 302.67	330-103300 373.22	340-103300 955.88	350-103300 971.38
	12X6	310-103301 201.43	320-103301 315.11	330-103301 428.77	340-103301 1049.95	350-103301 1069.29
	12X8	310-103302 232.45	320-103302 368.05	330-103302 503.69	340-103302 1172.33	350-103302 1198.16
	12X10	310-103303 277.62	320-103303 457.15	330-103303 639.28	340-103303 1343.65	350-103303 1392.63
	15	310-103321 <sup>1</sup> 599.25	---	---	---	---
	15X2	310-103313 <sup>2</sup> 258.27	---	---	---	---
	15X3	310-103314 <sup>2</sup> 290.60	---	---	---	---
	15X4	310-103315 <sup>2</sup> 320.26	---	---	---	---
	15X6	310-103316 <sup>2</sup> 366.79	---	---	---	---
	15X8	310-103317 <sup>2</sup> 400.35	---	---	---	---
	15X10	310-103318 <sup>2</sup> 433.92	---	---	---	---
	15X12	310-103319 <sup>2</sup> 480.45	---	---	---	---

<sup>1</sup> 15" PIP O.D.

<sup>2</sup> 15" PIP O.D. x IPS

**Cross (Gasket x Gasket x Gasket x Gasket)**

	4	---	320-103997 226.01	330-103997 245.39	340-103997 306.75	350-103997 331.29
	6	---	320-104001 263.43	330-104001 330.59	340-104001 551.36	350-104001 699.56
	6X4	---	320-104000 238.93	330-104000 303.48	340-104000 434.13	350-104000 544.92
	8	---	320-104006 431.37	330-104006 493.36	340-104006 855.44	350-104006 1062.87
	8X4	---	320-104004 322.86	330-104004 374.51	340-104004 592.56	350-104004 712.42
	8X6	---	320-104005 387.41	330-104005 426.15	340-104005 711.14	350-104005 829.65
	10	---	320-104012 648.35	330-104012 857.60	340-104012 1424.85	350-104012 1587.17
	10X4	---	320-104009 452.01	330-104009 548.88	340-104009 770.38	350-104009 919.86
	10X6	---	320-104010 516.57	330-104010 568.25	340-104010 943.03	350-104010 1049.95
	10X8	---	320-104011 581.19	330-104011 742.62	340-104011 1159.48	350-104011 1198.16
	12	---	320-104019 879.51	330-104019 1203.73	340-104019 1985.25	350-104019 2235.18
	12X4	---	320-104015 645.75	330-104015 710.34	340-104015 1129.80	350-104015 1296.01
	12X6	---	320-104016 710.34	330-104016 749.06	340-104016 1295.46	350-104016 1382.34
	12X8	---	320-104017 774.89	330-104017 878.23	340-104017 1462.17	350-104017 1494.43

Fabricated Fittings Product

**PVC Class 63, 100, 125, 160 & 200 IPS Fabricated Fittings & Molded Class 125**



	Size	CLASS 63	CLASS 100	CLASS 125	CLASS 160	CLASS 200
		Prod Code: 340 Part Number MSRP	Prod Code: 350 Part Number MSRP	Prod Code: 360 Part Number MSRP	Prod Code: 370 Part Number MSRP	Prod Code: 380 Part Number MSRP

**Cross (Gasket x Gasket x Gasket x Gasket) (continued)**

	12X10	---	320-104018 826.58	330-104018 1059.03	340-104018 1713.45	350-104018 1749.52
--	-------	-----	----------------------	-----------------------	-----------------------	-----------------------

**Surface Reducer (Socket)**

	6X2	310-102013 36.15	---	330-102013 51.63	---	---
	6X3	310-102015 36.15	---	330-102015 51.63	---	---
	6X4	310-102016 36.15	---	---	---	---
	8X2	310-102018 49.01	---	330-102018 103.33	---	---
	8X3	310-102020 49.01	---	330-102020 103.33	---	---
	8X4	310-102021 49.01	---	330-102021 103.33	---	---
	8X6	310-102022 49.01	---	330-102022 167.91	---	---
	10X2	310-102024 78.75	---	330-102024 161.43	---	---
	10X3	310-102026 78.75	---	330-102026 161.43	---	---
	10X4	310-102027 78.75	---	330-102027 161.43	---	---
	10X6	310-102028 78.75	---	330-102028 161.43	---	---
	10X8	310-102029 78.75	---	330-102029 161.43	---	---
	12X2	310-102031 96.85	---	330-102031 290.60	---	---
	12X3	310-102033 96.85	---	330-102033 290.60	---	---
	12X4	310-102034 96.85	---	330-102034 290.60	---	---
	12X6	310-102035 96.85	---	330-102035 290.60	---	---
12X8	310-102036 96.85	---	330-102036 290.60	---	---	
12X10	310-102037 96.85	---	330-102037 290.60	---	---	

**Cap (Socket)**

	6	310-107540 24.55	---	330-107540 47.77	---	---
	8	310-107541 45.18	---	330-107541 61.97	---	---
	10	310-107542 77.48	---	330-107542 99.44	---	---





Fabricated Fittings Product


**PVC Class 63, 100, 125, 160 & 200 IPS Fabricated Fittings & Molded Class 125**

Size	CLASS 63	CLASS 100	CLASS 125	CLASS 160	CLASS 200
	Prod Code: 340 Part Number MSRP	Prod Code: 350 Part Number MSRP	Prod Code: 360 Part Number MSRP	Prod Code: 370 Part Number MSRP	Prod Code: 380 Part Number MSRP


Cap (Socket) (continued)

	12	310-107543 94.83	---	330-107543 191.12	---	---
--	----	---------------------	-----	----------------------	-----	-----

Cap (Gasket)

	4	---	---	330-107565 87.14	---	---
	6	---	---	330-107566 123.95	---	---
	8	---	---	330-107567 210.51	---	---
	10	---	---	330-107568 339.62	---	---
	12	---	---	330-107569 512.72	---	---

Saddle (Socket)

	6	310-101937 34.87	---	---	---	---
	6X2	310-101789 27.08	---	330-101789 77.48	---	---
	6X3	310-101797 29.66	---	330-101797 90.40	---	---
	6X4	310-101804 33.52	---	330-101804 103.33	---	---
	8	310-101938 51.63	---	---	---	---
	8X2	310-101790 27.08	---	330-101790 77.48	---	---
	8X3	310-101798 29.66	---	330-101798 90.40	---	---
	8X4	310-101805 33.52	---	330-101805 103.33	---	---
	8X6	310-101811 34.87	---	330-101811 116.24	---	---
	10	310-101939 80.07	---	---	---	---
	10X2	310-101791 27.08	---	330-101791 77.48	---	---
	10X3	310-101799 29.66	---	330-101799 90.40	---	---
	10X4	310-101806 33.52	---	330-101806 103.33	---	---
	10X6	310-101812 34.87	---	330-101812 116.24	---	---
	10X8	310-101817 51.63	---	330-101817 129.13	---	---
	12	310-101940 119.80	---	---	---	---
	12X2	310-101792 36.33	---	330-101792 77.48	---	---
	12X3	310-101800 29.66	---	330-101800 90.40	---	---
12X4	310-101807 33.52	---	330-101807 103.33	---	---	

Fabricated Fittings Product

PVC Class 63, 100, 125, 160 & 200 IPS Fabricated Fittings & Molded Class 125



	Size	CLASS 63	CLASS 100	CLASS 125	CLASS 160	CLASS 200
		Prod Code: 340 Part Number MSRP	Prod Code: 350 Part Number MSRP	Prod Code: 360 Part Number MSRP	Prod Code: 370 Part Number MSRP	Prod Code: 380 Part Number MSRP

Saddle (Socket) (continued)

	12X6	310-101813 34.87	---	330-101813 116.24	---	---
	12X8	310-101818 51.63	---	330-101818 129.13	---	---
	12X10	310-101822 80.07	---	330-101822 142.05	---	---

Stub Saddle (Socket)

	6	310-101949 56.79	---	---	---	---
	6X2	310-101884 37.41	---	330-101884 68.41	---	---
	6X3	310-101892 43.93	---	330-101892 74.87	---	---
	6X4	310-101899 50.37	---	330-101899 83.94	---	---
	8	310-101950 77.48	---	---	---	---
	8X2	310-101885 37.41	---	330-101885 68.41	---	---
	8X3	310-101893 43.93	---	330-101893 74.87	---	---
	8X4	310-101900 50.37	---	330-101900 83.94	---	---
	8X6	310-101906 56.79	---	330-101906 101.99	---	---
	10	310-101951 107.16	---	---	---	---
	10X2	310-101886 37.41	---	330-101886 68.41	---	---
	10X3	310-101894 43.93	---	330-101894 74.87	---	---
	10X4	310-101901 50.37	---	330-101901 83.94	---	---
	10X6	310-101907 56.79	---	330-101907 101.99	---	---
	10X8	310-101912 77.48	---	330-101912 117.48	---	---
	12	310-101952 134.35	---	---	---	---
	12X2	310-101887 37.41	---	330-101887 68.41	---	---
	12X3	310-101895 43.93	---	330-101895 74.87	---	---
	12X4	310-101902 50.37	---	330-101902 96.88	---	---
	12X6	310-101908 56.79	---	330-101908 101.99	---	---
12X8	310-101913 77.48	---	330-101913 117.48	---	---	
12X10	310-101917 107.16	---	330-101917 123.95	---	---	

Made in the U.S.A.

Suitable for Oil-Free air handling to 25 psi, not for distribution of compressed air or gas

Effective 10/01/2018 See MSRP-1 Sheet or Check Spears® On-line Catalog @ www.spearsmfg.com for Pricing

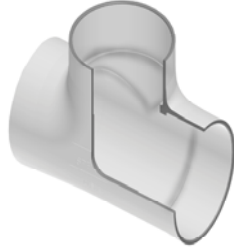


Fabricated Fittings Product

**PVC Class 63, 100, 125, 160 & 200 IPS Fabricated Fittings & Molded Class 125**

**Class 125 Molded Fittings**

Part Number	Size	Std Pk	Mstr Ctn	Prod Code	MSRP
-------------	------	--------	----------	-----------	------



**Class 125 Molded Tee**

12501-100	10	1	0	361	419.62
12501-120	12	1	0	361	629.39



**Class 125 Molded 90° Elbow**

12506-100	10	1	0	361	351.97
12506-120	12	1	0	361	538.33



**Class 125 Molded 45° Elbow**

12517-100	10	1	0	361	224.98
12517-120	12	1	0	361	329.89



**Class 125 Molded Coupling**

12529-100	10	1	0	361	109.02
12529-120	12	1	0	361	175.34



**Class 125 Molded Reducer Coupling**

12529-626	10X6	1	0	361	181.76
12529-628	10X8	1	0	361	113.20

Part Number	Size	Std Pk	Mstr Ctn	Prod Code	MSRP
<b>Class 125 Molded Reducer Coupling (continued)</b>					
12529-668	12X8	1	0	361	270.45
12529-670	12X10	1	0	361	215.32



**Class 125 Molded Reducer Bushing**

12537-626	10X6	3	0	361	172.56
12537-628	10X8	3	0	361	172.56
12537-668	12X8	2	0	361	310.61
12537-670	12X10	2	0	361	308.73