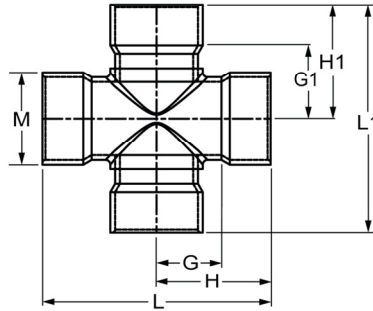




Fabricated Fittings Technical
PVC Schedule 40 & 80 Low Pressure Fabricated Fittings

Cross SCH 80

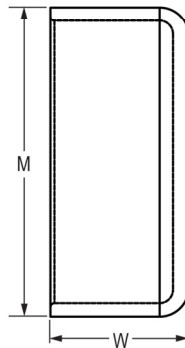
Socket x Socket x Socket x Socket



Part Number	Size	G	G1	H	H1	L	L1	M	Approx. Wt. (Lbs.)
3920-060	6	6-1/4	6-1/4	9-1/2	9-1/2	19	19	7-1/2	15.05
3920-080	8	7-5/8	7-5/8	11-7/8	11-7/8	23-3/4	23-3/4	9-5/8	21.20
3920-100	10	9	9	14-1/4	14-1/4	28-1/2	28-1/2	11-15/16	49.81
3920-120	12	11-1/4	11-1/4	17-1/2	17-1/2	35	35	14-1/8	86.58
3920-140	14	12-1/4	12-1/4	19-1/4	19-1/4	38-1/2	38-1/2	15-1/2	115.49
3920-160	16	13	13	21	21	42	42	17-11/16	156.80
3920-180	18	13-3/4	13-3/4	22-3/4	22-3/4	45-1/2	45-1/2	19-7/8	215.34
3920-200	20	16-3/8	16-3/8	26-3/8	26-3/8	52-3/4	52-3/4	22-1/16	306.39
3920-240	24	20-1/4	20-1/4	32-1/4	32-1/4	64-1/2	64-1/2	26-7/16	527.12

Cap SCH 40

Socket



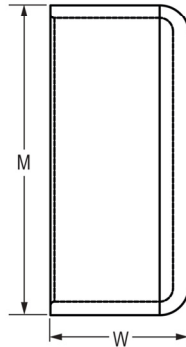
Part Number	Size	M	W	Approx. Wt. (Lbs.)
3747-100	10	11-9/16	3-3/4	4.11
3747-120	12	13-9/16	4-1/8	5.77
3747-140	14	14-13/16	5-3/4	8.37
3747-160	16	17-1/8	5-1/2	12.40
3747-180	18	18-7/8	5-7/8	12.68
3747-200	20	21-3/16	6-7/8	19.27
3747-240	24	25-3/16	6-1/2	28.06

Fabricated Fittings Technical
PVC Schedule 40 & 80 Low Pressure Fabricated Fittings



Cap SCH 80

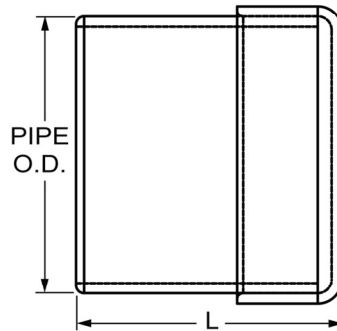
Socket



Part Number	Size	M	W	Approx. Wt. (Lbs.)
3947-100	10	11-9/16	3-3/4	3.63
3947-120	12	13-9/16	4-1/8	5.74
3947-140	14	14-7/8	5-1/8	8.06
3947-160	16	17-1/8	5-1/2	11.89
3947-180	18	18-7/8	5-7/8	11.67
3947-200	20	21-3/16	6-7/8	18.54
3947-240	24	25-3/16	7	30.00

Spigot Plug SCH 40

Spigot



Part Number	Size	L	Approx. Wt. (Lbs.)
3749-060	6	7-1/4	3.48
3749-080	8	8-1/4	5.96
3749-100	10	9-3/4	10.94
3749-120	12	11-1/8	17.18
3749-140	14	13-3/4	21.56
3749-160	16	14-1/2	32.07