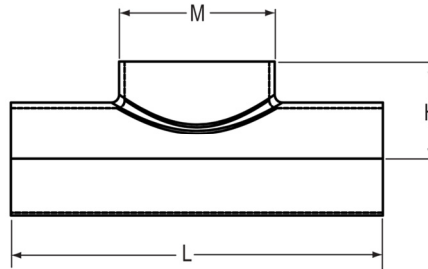


Fabricated Fittings Technical
PVC Low Head PIP Fabricated Fittings, Risers & Accessories



Low Head PIP Same Size Saddle

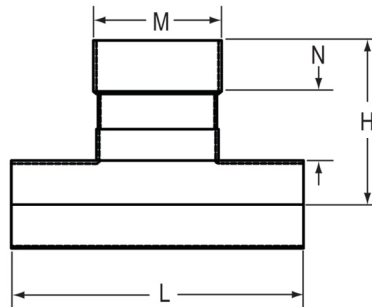
Socket



| Part Number | Size | H | L | M | Approx. Wt. (Lbs.) |
|----------------------------|-------|----------|----|----------|--------------------|
| 280-101937 | 6X6 | 4-1/4 | 13 | 6-1/4 | .81 |
| 280-101938 | 8X8 | 5-9/16 | 16 | 8-5/16 | 1.51 |
| 280-101939 | 10X10 | 6-15/16 | 19 | 10-7/16 | 2.75 |
| 280-101940 | 12X12 | 8-1/8 | 22 | 12-1/2 | 4.09 |
| 280-101941 | 15X15 | 9-11/16 | 27 | 15-5/8 | 8.30 |
| 280-101942 | 18X18 | 11-3/8 | 32 | 18-3/4 | 13.81 |
| 280-101943 | 20X20 | 12-11/16 | 38 | 20-13/16 | 20.94 |

Low Head PIP Same Size Stub Saddle

Socket



| Part Number | Size | H | L | M | N | Approx. Wt. (Lbs.) |
|----------------------------|-------|----------|----|----------|---------|--------------------|
| 280-101949 | 6X6 | 8-15/16 | 13 | 6-1/4 | 2-7/8 | 1.40 |
| 280-101950 | 8X8 | 10-7/8 | 16 | 8-5/16 | 2-13/16 | 2.37 |
| 280-101951 | 10X10 | 13-15/16 | 19 | 10-7/16 | 3-13/16 | 4.47 |
| 280-101952 | 12X12 | 14-15/16 | 22 | 12-7/16 | 3-13/16 | 7.04 |
| 280-101953 | 15X15 | 17-7/16 | 27 | 15-5/8 | 4-13/16 | 12.46 |
| 280-101954 | 18X18 | 20 | 32 | 18-3/4 | 4-13/16 | 20.85 |
| 280-101955 | 20X20 | 21-15/16 | 38 | 20-13/16 | 11-3/4 | 28.94 |